



South Beach

Grindstone Provincial Park

Getting There

Located in the Hecla - Grindstone Provincial Park on the east shore of Grindstone Point, approximately 155 km north of Winnipeg or 1 hour north of Gimli. Access is off Grindstone Road (gravel) which is about 6.5 km east of the PTH 8 and PR 234 junction. Hecla Island and Gull Harbour are about half an hour away. The North Cliffs subdivision is accessed via Little Grindstone Point Road at the end of Grindstone Road, about 28 km north of PTH 8.

Location and Description of Subdivision

The subdivision is along the eastern shore of Grindstone Point offering beautiful views of Manitoba's largest lake. There are lovely sandy beaches, picnic areas, boat launching and marina facilities available at the Little Grindstone Harbour as well as on Hecla Island. The North Cliffs subdivision has a sandy beach, including a large picnic area, and marina and boat launching facilities within walking distance. The subdivision design has provided a natural buffer space between the front lot lines and the lakeshore with an average lot size of approximately 1,350 m² (0.33 acres). Lot sizes may vary due to topographical limitations or other requirements.

Services

The subdivision has gravel road access and are serviced by Manitoba Hydro at the lot line. Manitoba Telecom Services (MTS) and local septic services are available. A liquid disposal site is located at Little Grindstone Point. Local services and amenities can be found in the Town of Riverton approximately 45 km south along PTH 8, or in the Town of Gimli approximately 1 hour south.

Local District Contact Information:

Riverton District Office
Box 70, Riverton, MB R0C 2R0
Ph: (204) 378-2945 Fax: (204) 378-5274



North Cliffs

Grindstone Point
Subdivisions

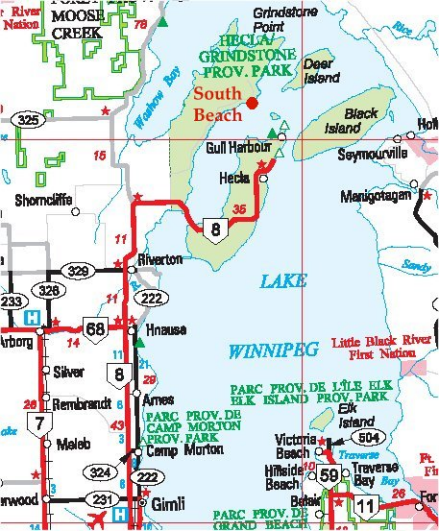
Island View
North

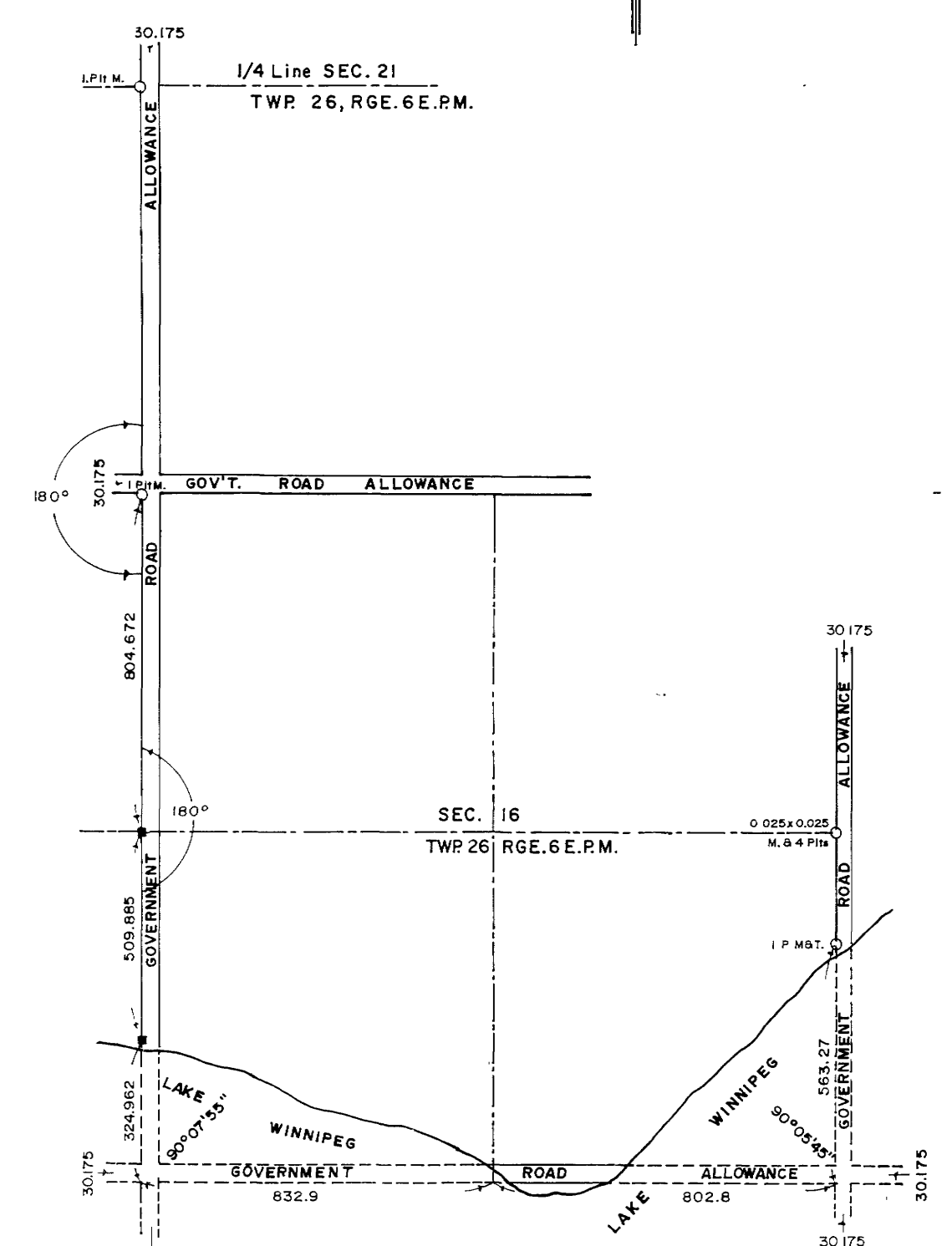
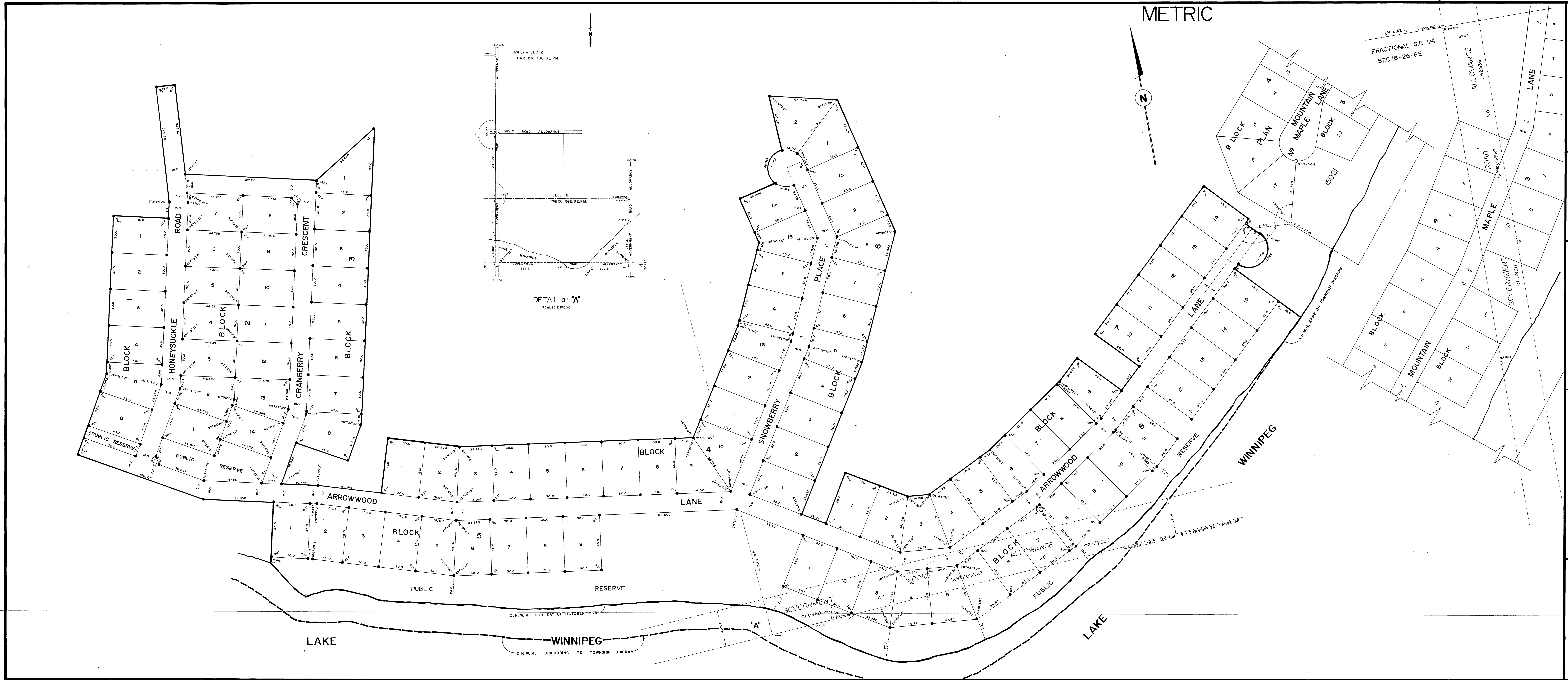
Island View
South

Whitesands

South Beach

Blacks Point





PLAN OF SUBDIVISION
OF PART OF
FRACTIONAL SOUTH HALF OF SECTION 16,
AND FRACTIONAL NORTH HALF OF SECTION 9,
TOWNSHIP 26, RANGE 6E.P.M.
AND PART OF GOVERNMENT ROAD ALLOWANCE (NOW CLOSED)
MANITOBA
SCALE: 1:1000

NOTES:
All distances are in metres and decimals thereof and may be converted to feet by multiplying by 3.28084.
Survey monuments found on the ground are described and shown thus.....
Iron posts 0.019 x 0.019 x 0.762 marked "M.L.S." are planted at all points shown thus.....
All plans referred to are on record in the Winnipeg Land Titles Office.
Land affected by the registration of this plan is shown bordered thus.....
Iron post 0.025 x 0.025 x 0.914 marked "M.L.S." is planted at a point shown thus.....
O.H.W.M. was plotted from aerial photo numbers A24410-183 and A24410-184 which are on file in the Director of Surveys office.

L. Andre Van DeWalle, of the City of Winnipeg, Manitoba Land Surveyor, make oath and say that I did personally superintend the survey represented by this plan, that the survey was made between the 22nd day of August and the 11th day of October, 1979, that the survey and plan are correct and true to the best of my knowledge and belief.

A. Van de Valle
Manitoba Land Surveyor

Sworn to before me at Winnipeg
This 13th day of November, 1979

W. Knight
A surveyor authorized to practise under "The Land Surveyors Act"

Approved and Confirmed
This 3rd day of October, 1980
R. J. [Signature]
Director of Surveys

Approved as to Planning under
the Provincial Parklands Act Cap. P 20
this 2nd day of November, A.D. 1980
[Signature]

Approved:
This 6th day of September, 1982
Minister of Natural Resources

Approved:
This 9th day of October, 1980
[Signature]
For Registrar General

Approved:
This 9th day of October, 1980
[Signature]
For Minister of Natural Resources

Entered and registered in the
Winnipeg Land Titles Office
this 9th day of September, 1982
at _____ as Plan No. 18856

[Signature]
Assistant Deputy District Registrar

This approval is valid for 12 months
unless registered.
Approved:
This 9th day of September, 1982

[Signature]
Examiner of Surveys
Re-approved: _____
Re-approved: _____

POLLOCK AND WRIGHT
LAND SURVEYORS
LOWER LEVEL
116 EDMONTON STREET