



Provincial Parks Endowment Funds

Annual Report

2024/25

Environment and Climate Change

Parks and Trails



Table of Contents

Executive Summary.....	3
Background	5
2024/25 Projects Summary.....	8
2024/25 Project Reports	10
Parks Endowment Fund – General	11
Birds Hill Endowment Fund	21
Clearwater Lake Endowment Fund	22
Hecla/Grindstone Endowment Fund.....	23
Paint Lake Endowment Fund.....	24
Spruce Woods Endowment Fund.....	25
Whiteshell Endowment Fund	26

Executive Summary 2024/25

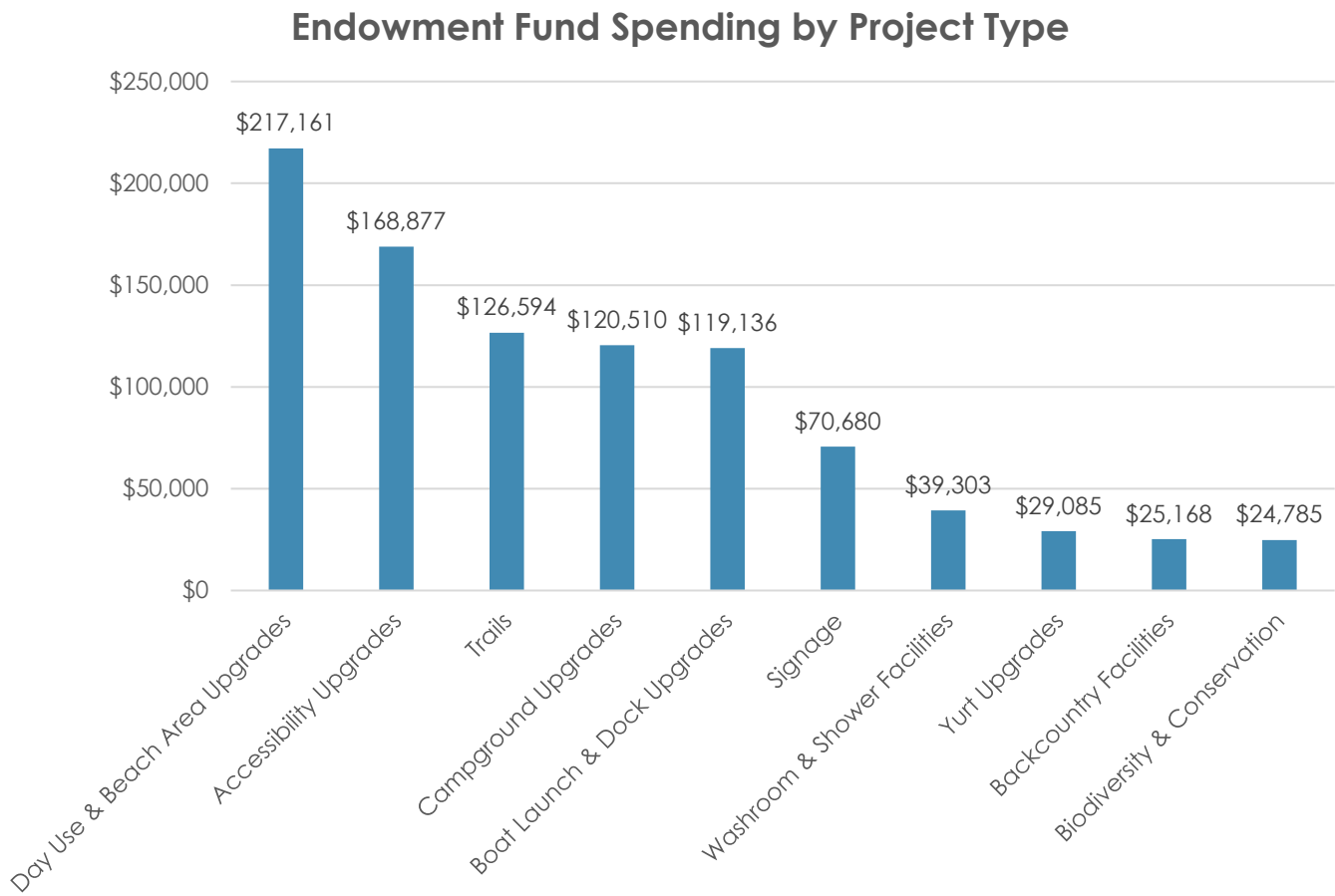
A total of 52 projects were completed using Provincial Park Endowment Funds (PPEF) in 2024/25, totalling \$941,298.51. The projects supported a wide variety of programs including improvements to trails, accessibility, and camping facilities, as well as biodiversity and prairie management, among others (see Projects Summary and Project Reports for further information).

The following table shows the projects and spending completed within each fund in 2024/25:

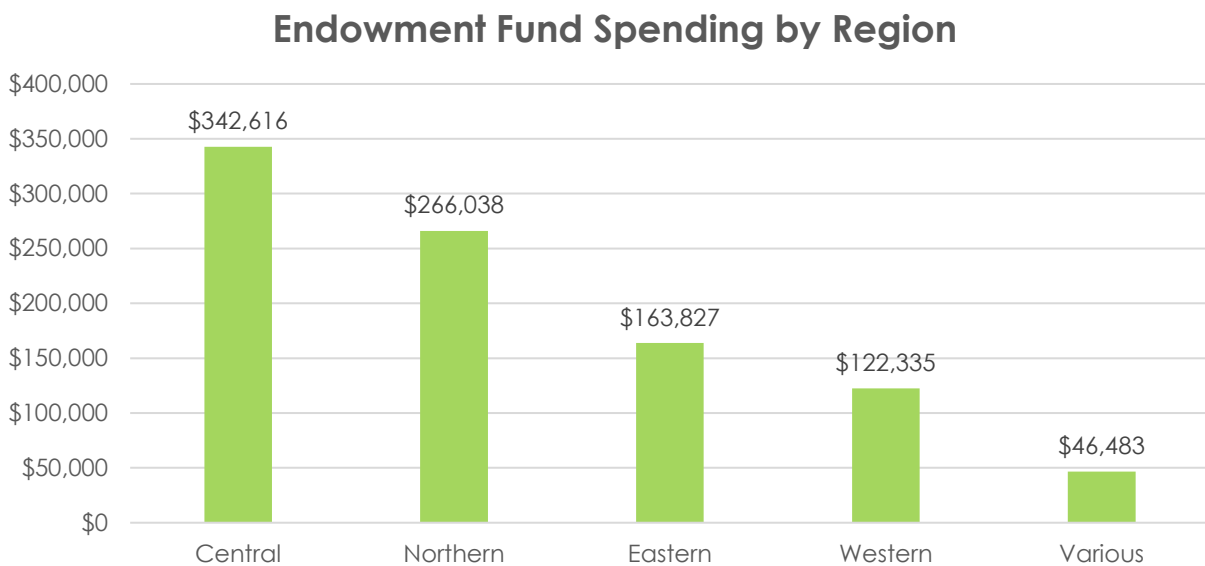
Endowment Fund	Summary
Provincial Parks (General)	
Total Spent	\$410,793.50
Number of Projects	27
Project Categories	Day Use/Beach Upgrades, Trails, Signage, Accessibility, Dock/Boat Launches, Yurts, Backcountry, Campground Upgrade, Washroom/Shower Facilities, Biodiversity & Conservation
Birds Hill Provincial Park	
Total Spent	\$ 46,149.98
Number of Projects	3
Project Categories	Trails, Accessibility
Clearwater Lake Provincial Park	
Total Spent	\$ 97,541.93
Number of Projects	5
Project Categories	Accessibility, Dock/Boat Launches, Signage, Backcountry
Hecla/Grindstone Provincial Park	
Total Spent	\$ 122,512.04
Number of Projects	6
Project Categories	Trails, Day Use/Beach Upgrades, Signage, Washroom/Shower Facilities
Paint Lake Provincial Park	
Total Spent	\$ 120,067.79
Number of Projects	4
Project Categories	Dock/Boat Launches, Campground Upgrade, Accessibility
Spruce Woods Provincial Park	
Total Spent	\$ 36,524.30
Number of Projects	3
Project Categories	Yurts, Biodiversity & Conservation, Trails
Whiteshell Provincial Park	
Total Spent	\$ 107,706.97
Number of Projects	4
Project Categories	Accessibility, Dock/Boat Launches, Day Use/Beach Upgrades
*Total	\$ 941,298.51

* Includes funds from the Cheryle D. Christenson Fund.

The following chart shows total expenditure across all project types:



The following chart shows total expenditure based on region:



Background

Provincial Park Endowment Funds (PPEF) are a series of funds established in 2021 with an initial \$20M capital contribution from government to The Winnipeg Foundation to fund projects or initiatives that support the following goals:

- Enhancing ecological integrity, conserving biological diversity, and preserving sustainable wildlife and fish populations;
- Increasing public use by improving public safety, enhancing visitor accessibility, and enriching experiences for park visitors;
- Improving water quality through decreasing nutrients and other pollutants entering waterways; and
- Increasing resilience to climate change through implementing positive adaptive and mitigated strategies.

The PPEF portfolio is made up of the following funds:

- The Provincial Park Endowment Fund – General (Initial Capital Investment \$10M)
- The Provincial Park Endowment Incentive Fund (Initial Capital Investment \$4.5M)
- Birds Hill Provincial Park Endowment Fund (Initial Capital Investment \$1M)
- Hecla-Grindstone Provincial Park - Cheryle D. Christensen Endowment Fund* (Initial Capital Investment \$1.58M)
- Hecla-Grindstone Provincial Park Endowment Fund (Initial Capital Investment \$0.5M)
- Clearwater Lake Provincial Park Endowment Fund (Initial Capital Investment \$1M)
- Paint Lake Provincial Park Endowment Fund (Initial Capital Investment \$1M)
- Spruce Woods Provincial Park Endowment Fund (Initial Capital Investment \$1M)
- Upper Fort Garry Heritage Provincial Park Endowment Fund (Initial Capital Investment \$1M)
- Whiteshell Provincial Park Endowment Fund (Initial Capital Investment \$1M)

**The Cheryle D. Christensen Fund was established through a private donation from the estate of Cheryle D. Christensen to support Hecla Grindstone Provincial Park (supplemented with \$500k from the Parks Endowment Incentive Fund).*

The funds generate up to \$1.1M in revenue annually to government and are managed by The Winnipeg Foundation on behalf of Manitoba. The endowment funds assist in offsetting the changing demands and increased costs of enhancing and sustaining provincial parks, including critical infrastructure, but are not designed to replace other provincial park funding.

Annual revenue produced by each fund may be used to support projects under the following categories:

- Campground Upgrades
- Accessibility Upgrades
- Day Use and Beach Area Upgrades
- Boat Launch and Dock Upgrades
- Washroom and Shower Facility Upgrades
- Yurt Upgrades
- Trails
- Backcountry Facilities
- Biodiversity and Conservation Programs
- Signage
- Heritage and Interpretive Facilities

Work may include, but is not limited to:

- Development and maintenance of trails, boardwalks, and associated infrastructure;
- Public use facilities such as amphitheaters, shelters, day use sites, playground equipment, docks and launches;
- Park road maintenance;
- Habitat restoration and enhancement;
- Historical assets and cultural sites;
- Infrastructure to support programming;
- Modern machinery and operational equipment;
- Municipal servicing infrastructure;
- Campground enhancements; and
- Interpretive infrastructure to support programming.
- Maintenance projects that extend and/or enhance the infrastructure, facilities, or assets outlined above are eligible project costs.

Manitoba Parks - Operations and Development manages project coordination, administration, delivery, and funds disbursement.

2024/25 Projects Summary

#	Location		Project	Amount (\$)
Provincial Parks General Fund				
1	Central	Grand Beach	Cross country Ski Shelters upgrades & Pit Privy	952.50
2	Central	Beaudry	Picnic shelter- Beaudry Park - ongoing	62,359.09
3	Central	Camp Morton	New ski trail pit privies (2)	22,630.00
4	Central	Grand Beach	Campground Office upgrade (leveling)	54,000.00
5	Central	Grand Beach	New bear-proof garbage bins	20,000.00
6	Central	Beaudry	Prairie inventory	14,012.00
7	Eastern	St. Malo/Moose Lake	Feature signs for St. Malo and Moose Lake	24,704.07
8	Eastern	St. Malo/Nopiming	Door openers (St. Malo and Nopiming)	24,955.95
9	Eastern	Nopiming	Beresford Campground Picnic Shelter	6,460.34
10	Northern	Wekusko Falls	Chlorine pumps for WTP at Wekusko	6,505.60
11	Northern	Wekusko Falls	New dock at Wekusko Falls	29,599.69
12	Northern	Grass River	New pit privy/change house upgrades at Gyles Lake	8,211.93
13	Northern	Wekusko, Bakers Campgrounds	New Accessible sites at Wekusko, Bakers	1,760.85
14	Northern	Sally's Beach	Finish Sally's Beach project - landscaping, new accessible trail from parking lot to beach area, sand	2,347.79
15	Various		Boot Scrapers various parks	344.24
16	Various		New PFD's and kiosks and replacement PDFs	36,468.40
17	Various		Mobile Trail Counters	9,670.00
18	Western	Rainbow Beach & Manipogo	Rainbow and Manipogo Campground Office Accessibility Improvements	9,983.40
19	Western	Duck Mountain	Dock upgrades	2,252.17
20	Western	Duck Mountain	Bathroom upgrades	2,318.71
21	Western	Duck Mountain	Picnic tables/benches/bridges	2,085.43
22	Western	Duck Mountain	Ski groomer	7,615.19
23	Western	Duck Mountain	Chlorine injector pumps replacement x 4	12,390.86
24	Western	Turtle Mountain	Beach bubbler	9,699.85
25	Western	Turtle Mountain	LED lights for winter rink	9,994.87
26	Western	Oak Lake	Electrical upgrade to picnic shelters	16,050.00
27	Western	Spruce Woods	Additional Yurt skin for Spruce Woods	13,420.57
TOTAL				\$ 410,793.50
Birds Hill Fund				
1	Central	Birds Hill	Continuing - New accessible privies at Chickadee and Cedar Bog trailheads	3,629.06
2	Central	Birds Hill	Griffith's Tower Upgrades	17,242.99
3	Central	Birds Hill	Overlook Trail Upgrade - convert gravel trail to asphalt improve accessibility	25,277.93
TOTAL				\$ 46,149.98

Clearwater Lake Fund				
1	Northern	Clearwater	Replace/add information signage along highway. Can be completed by MI in 2024	13,800.00
2	Northern	Clearwater	New Park Entrance Feature Sign	13,703.02
3	Northern	Clearwater	Accessibility upgrades to Campers Cove Beach	10,000.00
4	Northern	Clearwater	Boat Launch Upgrades Sunset and Campers Cove (new concrete pads)	34,870.61
5	Northern	Clearwater	Ski Chalet Roof Upgrade	25,168.30
TOTAL				\$ 97,541.93
Hecla/Grindstone Fund				
1	Central	Hecla/Grindstone	Trail upgrades on Grindstone to support local trail association (gravel and culverts)	29,979.28
2	Central	Hecla/Grindstone	New accessible privy Hecla Village by hall/school	22,873.74
3	Central	Hecla/Grindstone	New picnic shelter in Hecla Village	19,618.81
4	Central	Hecla/Grindstone	Hecla shower building plumbing and tiling upgrade	28,772.10
5	Central	Hecla/Grindstone	Upgrade directional signage on trails	2,795.38
6	Central	Hecla/Grindstone	New feature sign for Hecla Village	18,472.73
TOTAL				\$ 122,512.04
Paint Lake Fund				
1	Northern	Paint Lake	Upgrade campground water line	20,636.00
2	Northern	Paint Lake	Replacement of old pit privy with new accessible pit privy - Lakeview	20,517.09
3	Northern	Paint Lake	Accessibility upgrades to campground office	69,976.70
4	Northern	Paint Lake	Shoreline stabilization east of boat launch	8,940.00
TOTAL				\$ 120,069.79
Spruce Woods Fund				
1	Western	Spruce Woods	Prairie Management	10,773.00
2	Western	Spruce Woods	Yurt 2 refurbishment	15,664.83
3	Western	Spruce Woods	New pit privy at Yellowquill trailhead	10,086.47
TOTAL				\$ 36,524.30
Whiteshell Fund				
1	Eastern	Whiteshell	Install public dock at WH Crescent Beach	43,473.36
2	Eastern	Whiteshell	Door and opener for Seven Sisters Office	25,697.19
3	Eastern	Whiteshell	Replace Falcon Boardwalk	13,802.00
4	Eastern	Whiteshell	Sturgeon Falls picnic area upgrades	24,734.42
TOTAL				\$ 107,706.97
TOTAL - ALL FUNDS				\$ 941,298.51

PROJECT REPORTS

Accessibility Upgrades

Funding: Parks Endowment Fund (General)

Locations:

Bakers Narrows Provincial Park
Wekusko Falls Provincial Park
Rainbow Beach Provincial Park
Manipogo Provincial Park
St. Malo Provincial Park
Nopiming Provincial Park

Projects:

- Campground office accessibility improvements
- New accessible campsites
- Door openers

Total Investment: \$36,700.20



Washroom & Shower Facilities

Funding: Parks Endowment Fund (General)

Locations:

Grass River Provincial Park – Gyles Lake
Duck Mountain Provincial Park

Projects:

- Bathroom upgrades – Duck Mountain
- New pit privies

Total Investment: \$10,530.64



Trails

Funding: Parks Endowment Fund (General)

Locations:

Grand Beach Provincial Park
Camp Morton Provincial Park
St. Malo Provincial Park
Wekusko Falls Provincial Park
Duck Mountain Provincial Park
Various

Projects:

- Mobile trail counters
- Upgrades to cross-country ski shelters
- New cross-country ski trail pit privies (2)
- New cross-country ski trail groomer
- Boot scraper stations

Total Investment: \$41,211.93



Boat Launch & Dock Upgrades

Funding: Parks Endowment Fund (General)

Locations:

Wekusko Falls Provincial Park
Duck Mountain Provincial Park

Projects:

- New backcountry docks
- Dock upgrades

Total Investment: \$31,851.86



Biodiversity & Conservation

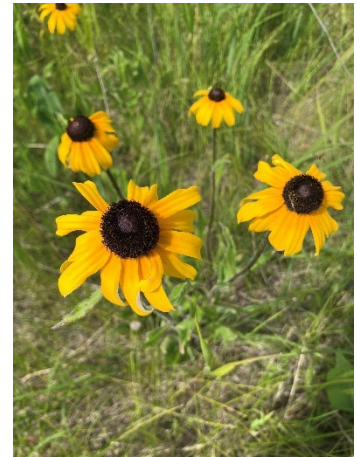
Funding: Parks Endowment Fund (General)

Locations:
Beaudry Provincial Park

Projects:

- Prairie inventory

Total Investment: \$14,012.00



Campground Upgrades & Yurt Upgrades

Funding: Parks Endowment Fund (General)

Locations:

Grand Beach Provincial Park
Duck Mountain Provincial Park
Wekusko Falls Provincial Park
Nopiming Provincial Park

Projects:

- Yurt skins – Spruce Woods
- Campground office – Grand Beach
- Picnic shelter – Beresford
- Chlorine pumps – Duck Mountain and Wekusko Falls

Total Investment: \$92,777.37



Day Use & Beach Area Upgrades

Funding: Parks Endowment Fund (General)

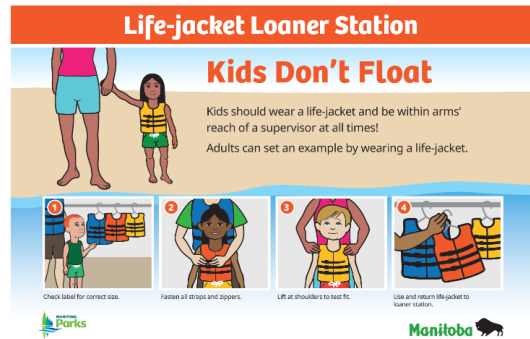
Locations:

- Grand Beach Provincial Park
- Oak Lake Provincial Park
- Turtle Mountain Provincial Park
- Beaudry Provincial Park
- Various

Projects:

- New bear-proof garbage bins
- Beach bubbler
- LED lights for winter rink
- Electrical upgrade to picnic shelters
- New picnic shelter
- New PFD lending kiosks
- New and replacement PFDs

Total Investment: \$159,005.43



Trails & Accessibility Upgrades

Funding: Birds Hill Endowment Fund

Location:

Birds Hill Provincial Park

Projects:

- Griffith's Tower upgrades
- Trailhead pit privy upgrades – Cedar Bog and Chickadee Trails
- Overlook Trail accessibility upgrade – converting gravel to asphalt

Total Investment: \$46,149.98



Signage, Accessibility Upgrades, Boat Launch & Dock Upgrades, and Backcountry Facilities

Funding: Clearwater Lake Endowment Fund

Location:
Clearwater Lake Provincial Park

- Projects:**
- Boat launch upgrades at Sunset Beach and Campers Cove
 - Accessibility upgrades at Campers Cove Beach
 - New park entrance sign
 - Informational signage
 - Ski chalet roof upgrade

Total Investment: \$97,541.93



Signage, Trails, Accessibility Upgrades, Day Use & Beach Area Upgrades, and Washroom & Shower Facilities

Funding: Hecla/Grindstone Endowment Fund

Locations:
Hecla/Grindstone Provincial Park

- Projects:**
- New picnic shelter in Hecla Village
 - New accessible privy
 - Hecla shower building plumbing and tiling
 - New feature sign for Hecla Village
 - Trail upgrades in Grindstone
 - Directional trail signage

Total Investment: \$122,512.04



Accessibility Upgrades, Campground Upgrades, and Boat Launch & Dock Upgrades

Funding: Paint Lake Endowment Fund

Locations:
Paint Lake Provincial Park

- Projects:**
- Accessibility upgrades to campground office
 - Shoreline stabilization east of boat launch
 - Upgrade campground water line
 - New accessible pit privy

Total Investment: \$120,067.79



Biodiversity & Conservation, Yurt Upgrades, and Trails

Funding: Spruce Woods Endowment Fund

Location:

Spruce Woods Provincial Park

Projects:

Prairie Management

Yurt refurbishment

New pit privy at Yellowquill trailhead

Total Investment: \$36,524.30



Accessibility Upgrades, Day Use & Beach Area Upgrades, and Boat Launch & Dock Upgrades

Funding: Whiteshell Endowment Fund

Location:

Whiteshell Provincial Park

Projects:

- Public dock at WH Crescent Beach
- Replace Falcon Boardwalk
- Sturgeon Falls picnic area upgrades
- Seven Sisters Office – door and opener

Total Investment: \$107,709.97

