



Provincial Parks Endowment Funds

Annual Report

2023/24

Environment and Climate Change

Parks and Trails



Table of Contents

Executive Summary.....	3
Background	5
2022/23 Projects Summary.....	8
2022/23 Project Reports	10
Parks Endowment Fund – General	11
Birds Hill Endowment Fund	21
Clearwater Lake Endowment Fund	22
Hecla/Grindstone Endowment Fund.....	23
Paint Lake Endowment Fund.....	24
Spruce Woods Endowment Fund.....	25
Whiteshell Endowment Fund	26

Executive Summary 2023/24

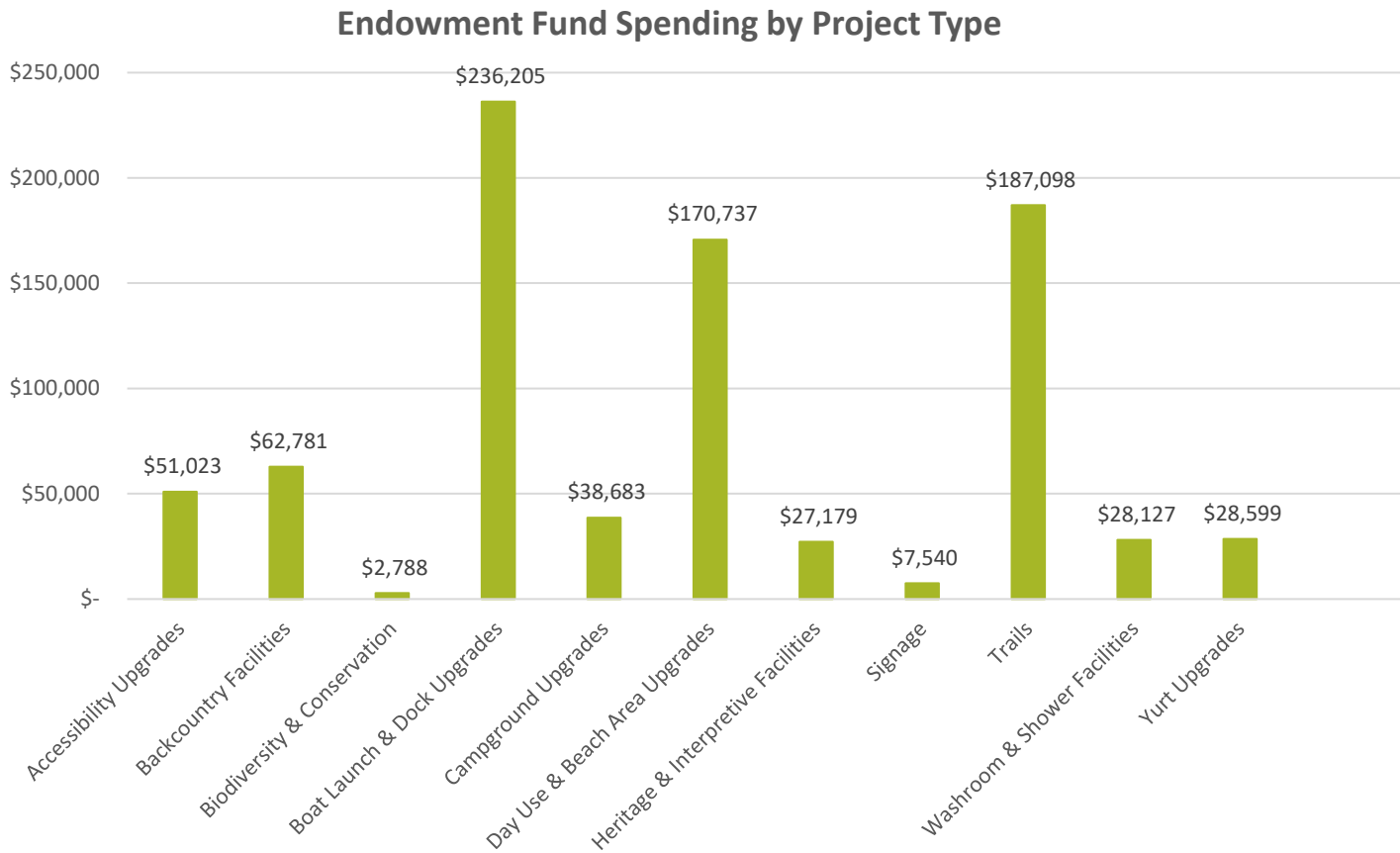
A total of 35 projects were completed using Provincial Park Endowment Funds (PPEF) in 2023/24, totalling \$840,759.16. The projects supported a wide variety of programs including improvements to trails, accessibility, and camping facilities, as well as biodiversity and prairie management, among others (see Projects Summary and Project Reports for further information).

The following table shows the projects and spending completed within each fund in 2023/24:

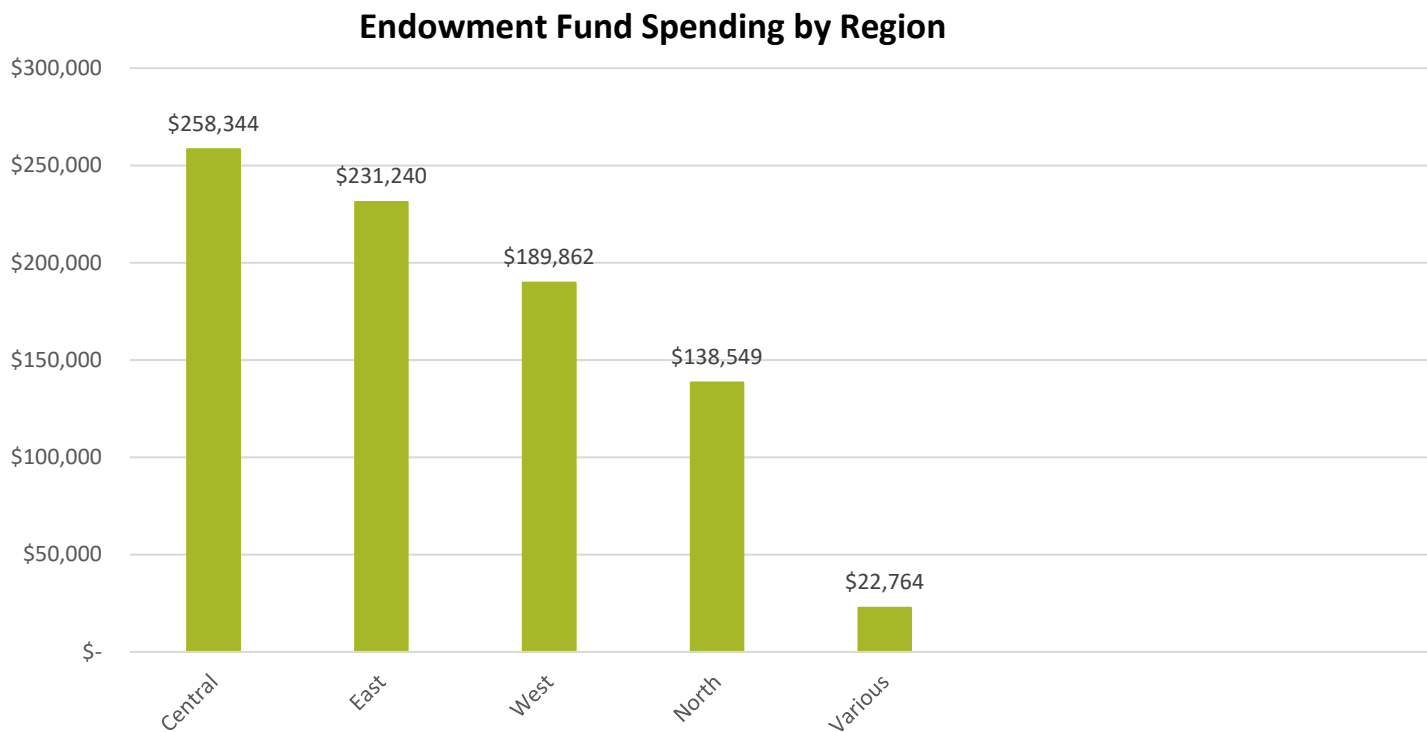
Endowment Fund	Summary
Provincial Parks (General)	
Total Spent	\$518,306.3
Number of Projects	19
Project Categories	Day Use/Beach Upgrades, Trails, Signage, Accessibility, Dock/Boat Launches, Yurts, Backcountry, Campground Upgrade, Washroom/Shower Facilities, Biodiversity & Conservation
Birds Hill Provincial Park	
Total Spent	\$59,965.67
Number of Projects	2
Project Categories	Trails, Campground Upgrades
Clearwater Lake Provincial Park	
Total Spent	\$29,059.76
Number of Projects	2
Project Categories	Accessibility, Dock/Boat Launches
Hecla/Grindstone Provincial Park	
Total Spent	\$142,806.22
Number of Projects	4
Project Categories	Trails, Day Use/Beach Upgrades, Heritage and Interpretive Facilities
Paint Lake Provincial Park	
Total Spent	\$29,674.92
Number of Projects	1
Project Categories	Trails
Spruce Woods Provincial Park	
Total Spent	\$53,907.26
Number of Projects	4
Project Categories	Signage, Yurts, Heritage and Interpretive Facilities, Trails
Whitshell Provincial Park	
Total Spent	\$7,038.99
Number of Projects	3
Project Categories	Trails, Dock/Boat Launches, Backcountry
Total	\$840,759.16

* Includes funds from the Cheryle D. Christenson Fund.

The following chart shows total expenditures across all project types:



The following chart shows total expenditures based on region:



Background

Provincial Park Endowment Funds (PPEF) are a series of funds established in 2021 with an initial \$20M capital contribution from government to The Winnipeg Foundation to fund projects or initiatives that support the following goals:

- Enhancing ecological integrity, conserving biological diversity, and preserving sustainable wildlife and fish populations;
- Increasing public use by improving public safety, enhancing visitor accessibility, and enriching experiences for park visitors;
- Improving water quality through decreasing nutrients and other pollutants entering waterways; and
- Increasing resilience to climate change through implementing positive adaptive and mitigated strategies.

The PPEF portfolio is made up of the following funds:

- The Provincial Park Endowment Fund – General (Initial Capital Investment \$10M)
- The Provincial Park Endowment Incentive Fund (Initial Capital Investment \$4.5M)
- Birds Hill Provincial Park Endowment Fund (Initial Capital Investment \$1M)
- Hecla-Grindstone Provincial Park - Cheryle D. Christensen Endowment Fund* (Initial Capital Investment \$1.58M)
- Hecla-Grindstone Provincial Park Endowment Fund (Initial Capital Investment \$0.5M)
- Clearwater Lake Provincial Park Endowment Fund (Initial Capital Investment \$1M)
- Paint Lake Provincial Park Endowment Fund (Initial Capital Investment \$1M)
- Spruce Woods Provincial Park Endowment Fund (Initial Capital Investment \$1M)
- Upper Fort Garry Heritage Provincial Park Endowment Fund (Initial Capital Investment \$1M)
- Whiteshell Provincial Park Endowment Fund (Initial Capital Investment \$1M)

**The Cheryle D. Christensen Fund was established through a private donation from the estate of Cheryle D. Christensen to support Hecla Grindstone Provincial Park (supplemented with \$500k from the Parks Endowment Incentive Fund).*

The funds generate up to \$1.1M in revenue annually to government and are managed by The Winnipeg Foundation on behalf of Manitoba. The endowment funds assist in offsetting the changing demands and increased costs of enhancing and sustaining provincial parks, including critical infrastructure, but are not designed to replace other provincial park funding.

Annual revenue produced by each fund may be used to support projects under the following categories:

- Campground Upgrades
- Accessibility Upgrades
- Day Use and Beach Area Upgrades
- Boat Launch and Dock Upgrades
- Washroom and Shower Facility Upgrades
- Yurt Upgrades
- Trails
- Backcountry Facilities
- Biodiversity and Conservation Programs
- Signage
- Heritage and Interpretive Facilities

Work may include, but is not limited to:

- Development and maintenance of trails, boardwalks, and associated infrastructure;
- Public use facilities such as amphitheaters, shelters, day use sites, playground equipment, docks and launches;
- Park road maintenance;
- Habitat restoration and enhancement;
- Historical assets and cultural sites;
- Infrastructure to support programming;
- Modern machinery and operational equipment;
- Municipal servicing infrastructure;
- Campground enhancements; and
- Interpretive infrastructure to support programming.
- Maintenance projects that extend and/or enhance the infrastructure, facilities, or assets outlined above are eligible project costs.

Manitoba Parks - Operations and Development will manage project coordination, administration, delivery, and funds disbursement.

2022/23 Projects Summary

	Location	Project	Amount (\$)
Provincial Parks General Fund			
1	Central – Grand Beach	Trail upgrades	3,887.94
2	Central – Grand Beach	Ski shelters and pit privy upgrades	30,730.94
3	Central – Grand Beach	Town site washroom upgrade - continued	12,876.01
4	Central - Beaudry	New picnic shelter - ongoing	8,076.90
5	Eastern – St Malo	New Pit Privies	15,251.30
6	Eastern – Nopiming	New picnic shelter	9,174.81
7	Eastern – Whiteshell and St. Malo	Snow trail groomers purchase	19,997.98
8	Eastern - Whiteshell	New kayak launches and docks at Betula, Brereton, Otter Falls and White Lake	179,777.16
9	Northern – Wekusko and Bakers Narrows	New accessible campsites	17,753.73
10	Northern - Wekusko	New fish cleaning shelter	14,717.34
11	Northern -Wekusko	Wekusko bridge engineering assessment	14,856.00
12	Northern – Bakers Narrows	Sally's Beach improvements (repaired retaining wall & added sand) continued	32,487.01
13	Western – Manipogo and Rainbow Beach	Campground office accessibility upgrades	24,117.02
14	Western – Duck Mountain	Replace Granola Lodge backcountry shelter	30,521.57
15	Western – Turtle Mountain	New disc golf course	21,121.74
16	Western – Turtle Mountain	New back country docks and kayak launches Adam Lake, Max Lake, William Lake	34,991.24
17	Western - Asessippi	Boardwalk extension at day use area by beach and concession	25,203.37
18	Various	New life jackets for beach safety loaner program	19,976.54
19	Various	Boot scrapers for invasive species control initiative	2,787.74
		TOTAL	518,306.3
Birds Hill Fund			
1	Central – Birds Hill	New accessible pit privies at Cedar Bog and Chickadee trailheads	21,282.96
2	Central – Birds Hill	Campsite upgrades	38,682.71
		TOTAL	59,965.67
Clearwater Lake Fund			
1	Northern - Clearwater	New accessible campsites	9,152.21
2	Northern – Clearwater, Various	New dock at Sunset Beach	19,907.55
		TOTAL	29,059.76
Hecla/Grindstone Fund			
1	Central – Hecla/Grindstone	Interpretive signage in Hecla Village	16,069.38
2	Central – Hecla/Grindstone	New picnic shelter at North Point	39,978.79
3	Central – Hecla/Grindstone	Trail warm-up shelter replacements	64,513.82
4	Central – Hecla/Grindstone	Marsh walking trail upgrades - continued	22,244.23
		TOTAL	142,806.22
Paint Lake Fund			
1	Northern – Paint Lake	Winter hiking and ski trail upgrades - ongoing	29,674.92
		TOTAL	29,674.92
Spruce Woods Fund			

1	Western – Spruce Woods	Visitor Center Siding Replacement - continued	11,109.41
2	Western – Spruce Woods	Yurt Upgrades (5 Yurts) - continued	28,598.57
3	Western – Spruce Woods	New Interpretive panels, entrance kiosk and trail signs - continued	7,540.44
4	Western – Spruce Woods	New sand ladder on Spirit Sands trail	6,658.84
		TOTAL	53,907.26
Whiteshell Fund			
1	Eastern - Whiteshell	Dock upgrade Crescent Beach - ongoing	1,528.87
2	Eastern - Whiteshell	Trail upgrades at McHugh Lake	3,981.25
3	Eastern - Whiteshell	Backcountry furnishings	1,528.87
		TOTAL	7,038.99

PROJECT REPORTS

PARKS ENDOWMENT FUND - GENERAL

PROJECT REPORTS

Accessibility Upgrades

Funding: Parks Endowment Fund (General)

Locations:

Bakers Narrows Provincial Park
Wekusko Falls Provincial Park
Rainbow Beach Provincial Park
Manipogo Provincial Park

Projects:

Campground office accessibility improvements
New accessible campsites

Total Investment: \$41,870.75



PARKS ENDOWMENT FUND - GENERAL

PROJECT REPORTS

Washroom Shower Facilities

Funding: Parks Endowment Fund (General)

Locations:

Grand Beach Provincial Park
St. Malo Provincial Park

Projects:

Efficiency and modernization improvements to washroom shower facilities
New pit privies
Accessibility improvements to washroom shower facilities

Total Investment: \$28,127.31



PARKS ENDOWMENT FUND - GENERAL

PROJECT REPORTS

Trails

Funding: Parks Endowment Fund (General)

Locations:

Grand Beach Provincial Park
St. Malo Provincial Park
Wekusko Falls Provincial Park

Projects:

Trail widening and base upgrade
Trail bridge engineering assessment (preparation for upgrade)
Trail grooming equipment for ski trails

Total Investment: \$38,741.92



PARKS ENDOWMENT FUND - GENERAL

PROJECT REPORTS

Boat Launch and Dock Upgrades

Funding: Parks Endowment Fund (General)

Locations:

Turtle Mountain Provincial Park
Whiteshell Provincial Park

Projects:

New backcountry docks
New kayak launches

Total Investment: \$214,768.40



PARKS ENDOWMENT FUND - GENERAL

PROJECT REPORTS

Biodiversity and Conservation

Funding: Parks Endowment Fund (General)

Locations:

Various

Projects:

Boot scrapers for invasive species control initiative

Total Investment: \$2,787.74



WIPE YOUR FEET!

Footwear can carry the seeds of invasive plants.



ESSUIE TES PIEDS!

Les chaussures et les bottes peuvent transporter les graines de plantes envahissantes.

What's The Problem?

Invading plants, animals and diseases threaten:

- 🌿 the valued natural environment.
- 💰 the economy, costing billions of dollars to many industries.
- 🧠 social and cultural practices and human health.

Quel est le problème ?

Les plantes, les maladies et les animaux envahissants menacent:

- 🌿 le précieux environnement naturel.
- 💰 l'économie, en causant des milliards de dollars de pertes de secteurs d'activité,
- 🧠 les pratiques sociales et culturelles, ainsi que la santé humaine.

Invasive Plants Are On The Move Plantes Envahissantes Qui Se Propagent

European common reed /
Phragmites
(*Phragmites australis*)



Orange hawkweed /
Épervière orange
(*Pilosella aurantiaca*)



Leafy spurge /
Euphorbe à feuilles
(*Euphorbia esula*)



Help Prevent the Spread of Invasive Plants, Animals and Disease

- REMOVE plants, small animals & mud from boots, gear, pets & vehicles.
- CLEAN your gear before entering & leaving the recreation site.
- STAY on designated roads & trails.

Aidez à prévenir l'expansion des plantes, maladies et animaux envahissants.

- RETIREZ les plantes, les petits animaux et la boue de vos bottes, de votre matériel, de vos animaux de compagnie et de vos véhicules.
- NETTOYEZ votre matériel avant d'entrer et de quitter l'aire de récréation.
- RESTEZ sur les routes et les chemins désignés.



STOP INVASIVE SPECIES
IN YOUR TRACKS.

PlayCleanGo.ca



NE LAISSEZ PAS LES
ESPÈCES ENVAHISSANTES
SUIVRE VOS TRACES.

JouezNettoyezPartez.ca



PARKS ENDOWMENT FUND - GENERAL

PROJECT REPORTS

Backcountry Facilities

Funding: Parks Endowment Fund (General)

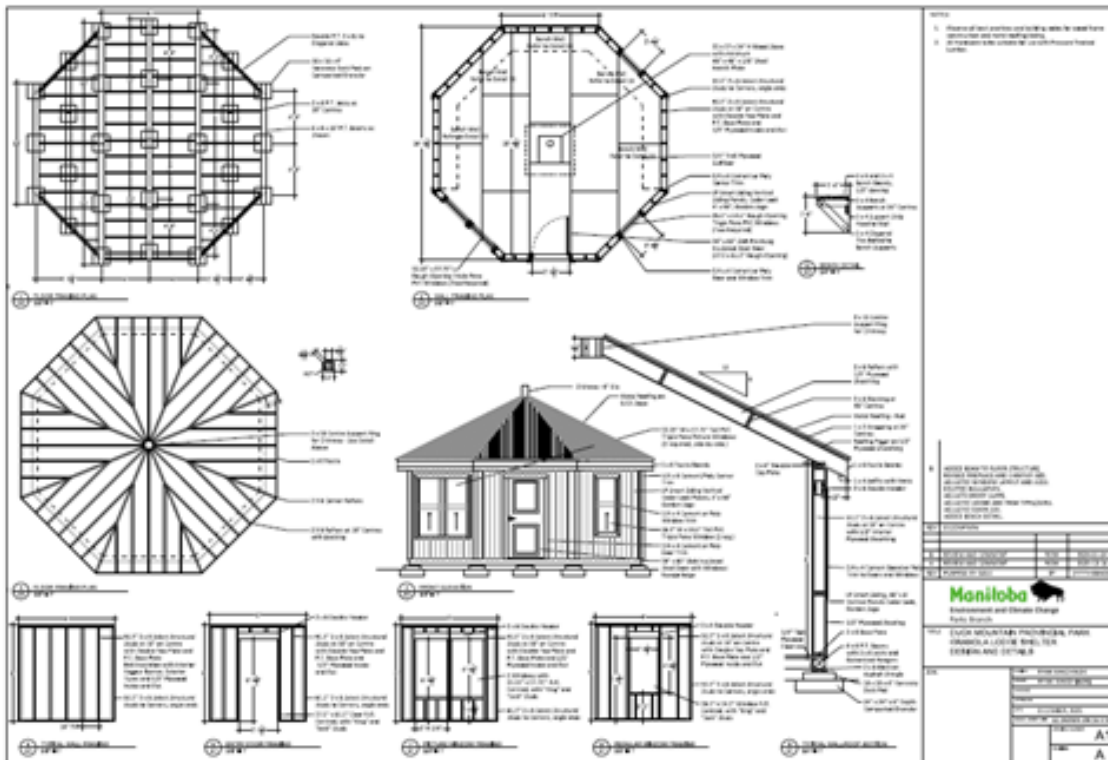
Locations:

Grand Beach Provincial Park
Duck Mountain Provincial Park

Projects:

New backcountry warm-up shelters
New pit privies

Total Investment: \$61,252.51



PARKS ENDOWMENT FUND - GENERAL

PROJECT REPORTS

Day Use and Beach Area Upgrades

Funding: Parks Endowment Fund (General)

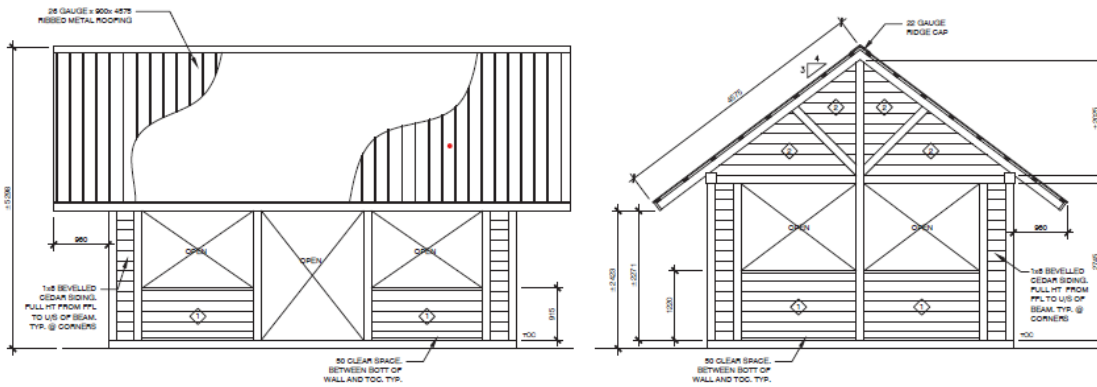
Locations:

- Nopiming Provincial Park
- Bakers Narrows Provincial Park
- Turtle Mountain Provincial Park
- Wekusko Falls Provincial Park
- Beaudry Provincial Park
- Asessippi Provincial Park
- Various

Projects:

- New picnic shelters
- Retaining wall and access upgrades continued
- New disc golf course
- New fish cleaning stations
- New boardwalk at beach area
- New life jackets for beach safety loaner program

Total Investment: \$121,582.90



BIRDS HILL ENDOWMENT FUND

PROJECTS REPORT

Accessibility, Trails, Campground Upgrades

Funding: Birds Hill Endowment Fund

Location:
Birds Hill Provincial Park

Projects:
Campsite improvements
Trailhead pit privy upgrades

Total Investment: \$59,965.67



CLEARWATER LAKE ENDOWMENT FUND

PROJECTS REPORT

Docks and Accessible Campsite Upgrades

Funding: Clearwater Lake Endowment Fund

Location:
Clearwater Lake Provincial Park

Projects:
Dock upgrades at Sunset Beach
New accessible campsites at Pioneer

Total Investment: \$29,059.76



PAINT LAKE ENDOWMENT FUND

PROJECTS REPORT

Trails and Washroom/Shower Upgrades

Funding: Paint Lake Endowment Fund

Locations:
Paint Lake Provincial Park

Projects:
Winter trail upgrades to allow for multi-use
New accessible pit privy

Total Investment: \$29,674.92



SPRUCE WOODS ENDOWMENT FUND

PROJECTS REPORT

Trails, Yurts, Signage, Heritage and Interpretive Facility Upgrades

Funding: Spruce Woods Endowment Fund

Location:
Spruce Woods Provincial Park

Projects:
Visitor Centre siding upgrade continued
Yurt upgrades continued
Interpretive signage upgrades continued
Trail improvements (new sand ladder)

Total Investment: \$53,907.26



WHITESHELL ENDOWMENT FUND

PROJECTS REPORT

Trails and Accessible Campsite Upgrades

Funding: Whiteshell Endowment Fund

Location:
Whiteshell Provincial Park

Projects:
Trail upgrades at McHugh Lake
Backcountry furnishings

Total Investment: \$7,038.99

