



Environment and Climate Change

Environmental Approvals Branch
Box 35, 14 Fultz Boulevard
Winnipeg, MB R3Y 0L6
T 204 945-8321 F 204 945-5229
EABDirector@gov.mb.ca

Public Registry File Number: 6000.00
File Number: 18226

October 23, 2025

Arlita Madrigga
Manager of Water and Waste
Rural Municipality of St. Clements
Box 2 Grp 35 RR1
East Selkirk MB R0E 0M0
info@rmofstclements.com

Dear Arlita Madrigga:

Re: Gull Lake Transfer Station Permit No. 36920 P2

Please find enclosed Permit No. 36920 P2 in response to your application dated February 24, 2025, and additional information received on August 7, 2025. You wish to continue to operate Gull Lake Transfer Station on portions of NW 26-16-07 EMP in the Rural Municipality of St. Clements, Manitoba.

The Rural Municipality of St. Clements must follow all permit requirements and federal, provincial, and municipal regulations and by-laws.

Anyone affected by this decision may appeal, in writing, to the Minister of Environment and Climate Change at minecc@manitoba.ca by November 22, 2025. The permit is available on the public registry at <https://www.gov.mb.ca/sd/eal/registries/6000wmfpermits/index.html>.

If you have any questions about this approval, please contact Tyler Kneeshaw, Regional Supervisor, Environmental Compliance and Enforcement Branch at EnvCEInterlake@gov.mb.ca or 204-239-3608.

Sincerely,

Original Signed By
Agnes Wittmann
Director
The Environment Act

- c. Tyler Kneeshaw - Environmental Compliance and Enforcement
Desalegn Edossa - Environmental Approvals

Transfer Station Operating Permit

File No.: 18226

Permit No.: **36920 P2**

Issue Date: **October 23 2025**

The Rural Municipality of St. Clements is hereby permitted to operate the Gull Lake Transfer Station on portions of NW 26-16-07 EMP within the Rural Municipality of St. Clements, Manitoba. This authorization follows the application filed on February 24, 2025, and additional information received on August 7, 2025, following the Waste Management Facilities Regulation under The Environment Act. Schedule A of this permit identifies the facility. The transfer station is located within the Gull Lake Waste Disposal Ground, which is now closed.

This permit is subject to being amended, suspended, or revoked under sections 7 and 9 of the Waste Management Facilities Regulation.

Definition

in this permit,

"Environment Officer" means an employee so designated pursuant to The Environment Act;

"operator" means the holder of a licence or permit issued in respect of the waste management facility;

"odour nuisance" means a continuous or repeated odour, smell or aroma, in an affected area, which is offensive, obnoxious, troublesome, annoying, unpleasant or disagreeable to a person:

- a) residing in an affected area;
- b) working in an affected area; or
- c) present at a location in an affected area which is normally open to members of the public;

if the odour, smell or aroma:

- d) is the subject of at least 5 written complaints, received by the director in a form satisfactory to the director and within a 90-day period, from 5 different persons falling within clauses (a), (b) or (c), who do not live in the same household; or
- e) is the subject of at least one written complaint, received by the director in a form satisfactory to the director, from a person falling within clauses (a), (b) or (c) and the director is of the opinion that if the odour, smell or aroma had occurred in a more densely populated area there would have been at least 5 written complaints received within a 90-day period, from 5 different persons who do not live in the same household; and

"transfer station" means a facility at which solid waste is received and temporarily stored for the purpose of transporting it to another site for processing, recycling or disposal.

General Terms and Operating Conditions

1. This permit expires on October 23, 2030.
2. The operator must maintain and operate the facility following the Waste Management Facilities Regulation and any future amendments and this permit.
3. The operator must:
 - a) review and update the operations manual at least every five years, or at an earlier time if required by the director; and

- b) submit the operations manual to the director or environment officer upon request.
- 4. The operator must obtain approval in writing from the director before altering the facility.

Odour Nuisance

- 5. The operator must not cause or permit an odour nuisance to be created as a result of the construction, operation, or alteration of the facility, and must take such steps as the director may specify to eliminate or mitigate an odour nuisance.

Site Access and Control

- 6. The operator must restrict access to the facility when site supervision is not provided, with a locked gate, barrier or other system approved in writing by an environment officer.

Materials Acceptance and Handling

- 7. The operator must:
 - a) segregate materials collected for recycling or reuse;
 - b) temporarily stockpile these materials in designated areas with clear signage; and
 - c) must maintain these areas to control weeds, vectors, and the quality of the materials.
- 8. The operator must remove all materials received at the facility regularly or upon the request of an environment officer, within the timeframe specified
- 9. The operator must not bury or permanently dispose of any materials at the transfer station without written authorization from an environment officer.
- 10. The operator must remove the household waste deposited at the facility at minimum every thirty (30) days or at a frequency required by an environment officer.
- 11. The operator must implement control measures to prevent the attraction and sustenance of rodents and scavenging vectors.
- 12. The operator must not accept any livestock or other animal mortalities at the facility.

Surface Water Management

- 13. The operator must construct the facility such that all uncontaminated surface water flows to the perimeter ditch and impacted water from all material storage areas is contained within the facility boundaries.

Burning of Specified Waste

- 14. The operator must only burn:
 - a) separated and readily combustible materials such as boughs, leaves, loose straw, paper products, cardboard, non-salvageable untreated wood, and packing materials derived from wood; and
 - b) when there is an appropriate volume of materials as identified in clause 14 (a) of this permit.

Monitoring and Reporting Requirements

15. The operator must collect, store, and analyze groundwater monitoring well samples using approved field and laboratory techniques for dissolved analysis. The operator must retain the analytical results in a format acceptable to the environment officer.
16. The operator must sample the groundwater monitoring wells for those parameters identified in Schedule B of this permit once per year, or at a frequency approved by the environment officer.
17. The operator must submit an annual report, in a format acceptable to the environment officer, detailing the sampling methodology, field observations, and results of groundwater sampling analyses, complete with previous results and trends. The operator must submit the report annually to an environmental officer no later than December 31st of each year.

Revocation

18. This permit replaces Permit No. 36920 P1, which is expired.

Original Signed By
Agnes Wittmann
Director
The Environment Act

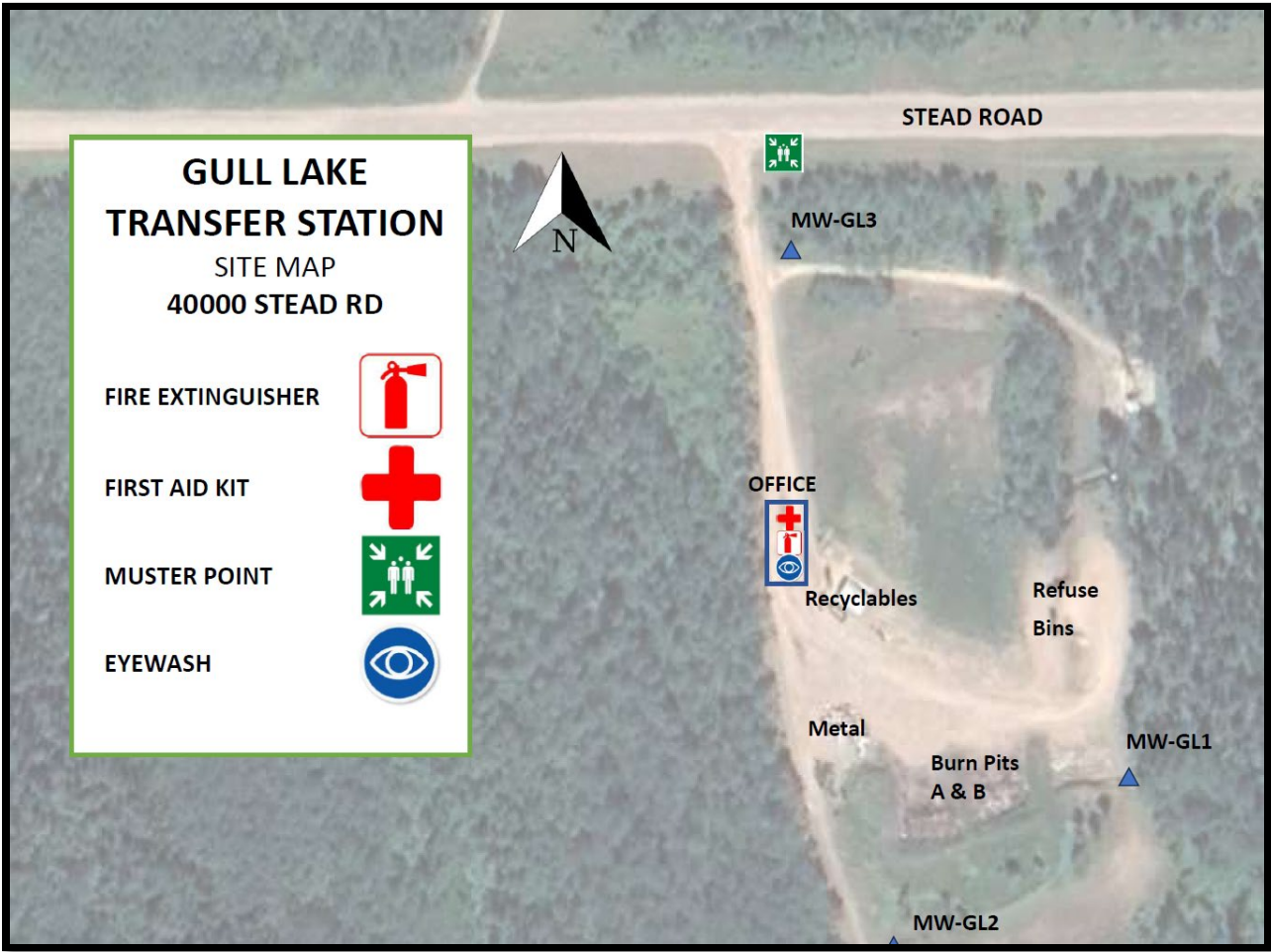


Figure 1 Facility layout

Schedule B to Permit No. 36920 P2
Groundwater chemistry parameters following clause 16 of this permit

Chemical Parameters		
Inorganics		
Alkalinity – Total		Magnesium – Dissolved
Ammonia – Total		Manganese – Dissolved
Arsenic – Dissolved		Mercury – Dissolved
Barium – Dissolved		Nitrate - Reported as N
Boron – Dissolved		Nitrite - Reported as N
Cadmium – Dissolved		Total Kjeldahl Nitrogen - Reported as N
Calcium – Dissolved		Total Phosphorous
Calcium Carbonate		Potassium – Dissolved
Chloride		Silicon – Dissolved
Chromium – Dissolved		Sodium – Dissolved
Conductivity		Total Dissolved Solids (TDS)
Copper – Dissolved		Sulphate
Iron – Dissolved		Uranium – Dissolved
Lead – Dissolved		Zinc – Dissolved
Volatile Organic Compounds (VOCs)		
BTEX		
Other Organics		
Biological Oxygen Demand (BOD)		Chemical Oxygen Demand (COD)
Dissolved Organic Carbon (DOC)		
Field Parameters		
pH		Groundwater Elevation
Conductivity		Dissolved Oxygen
Temperature		

Note: The director may revise this schedule. All dissolved samples should be filtered in the field and preserved in the field at the time of sampling. The operator must notify the director and the laboratory for dissolved samples not filtered and preserved in the field.