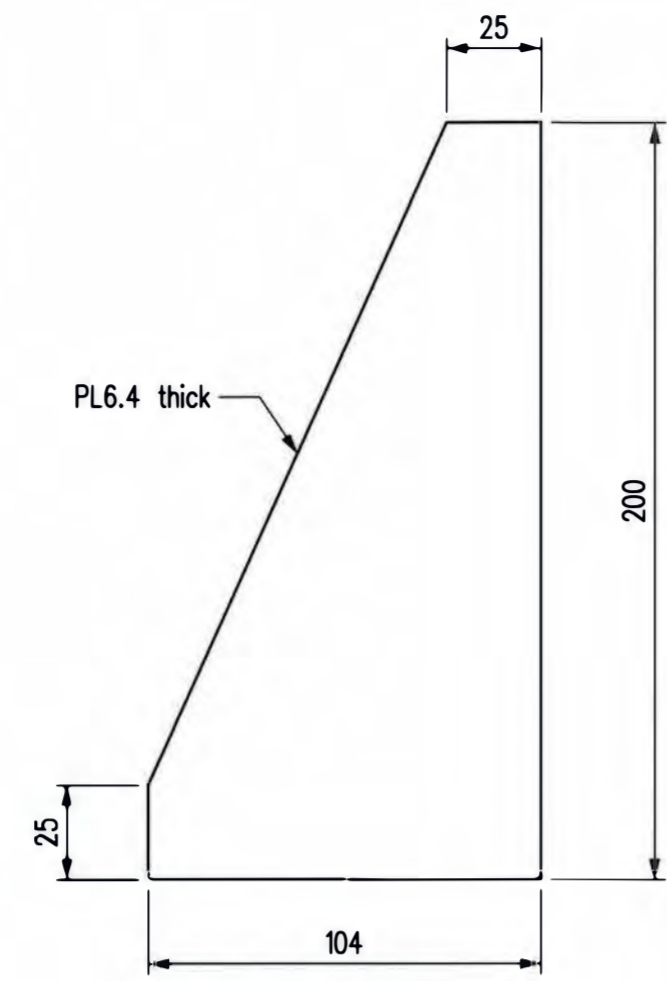
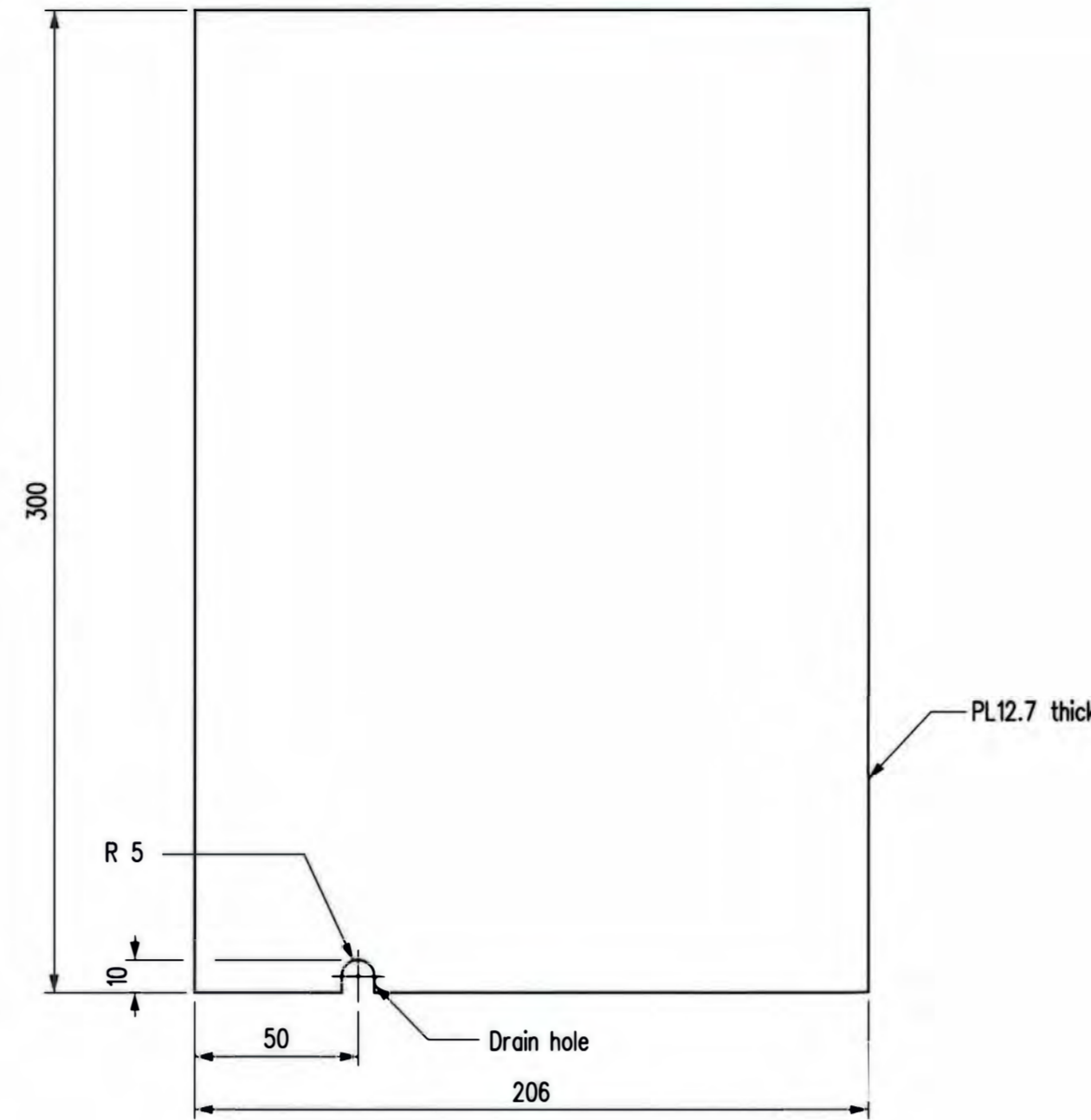


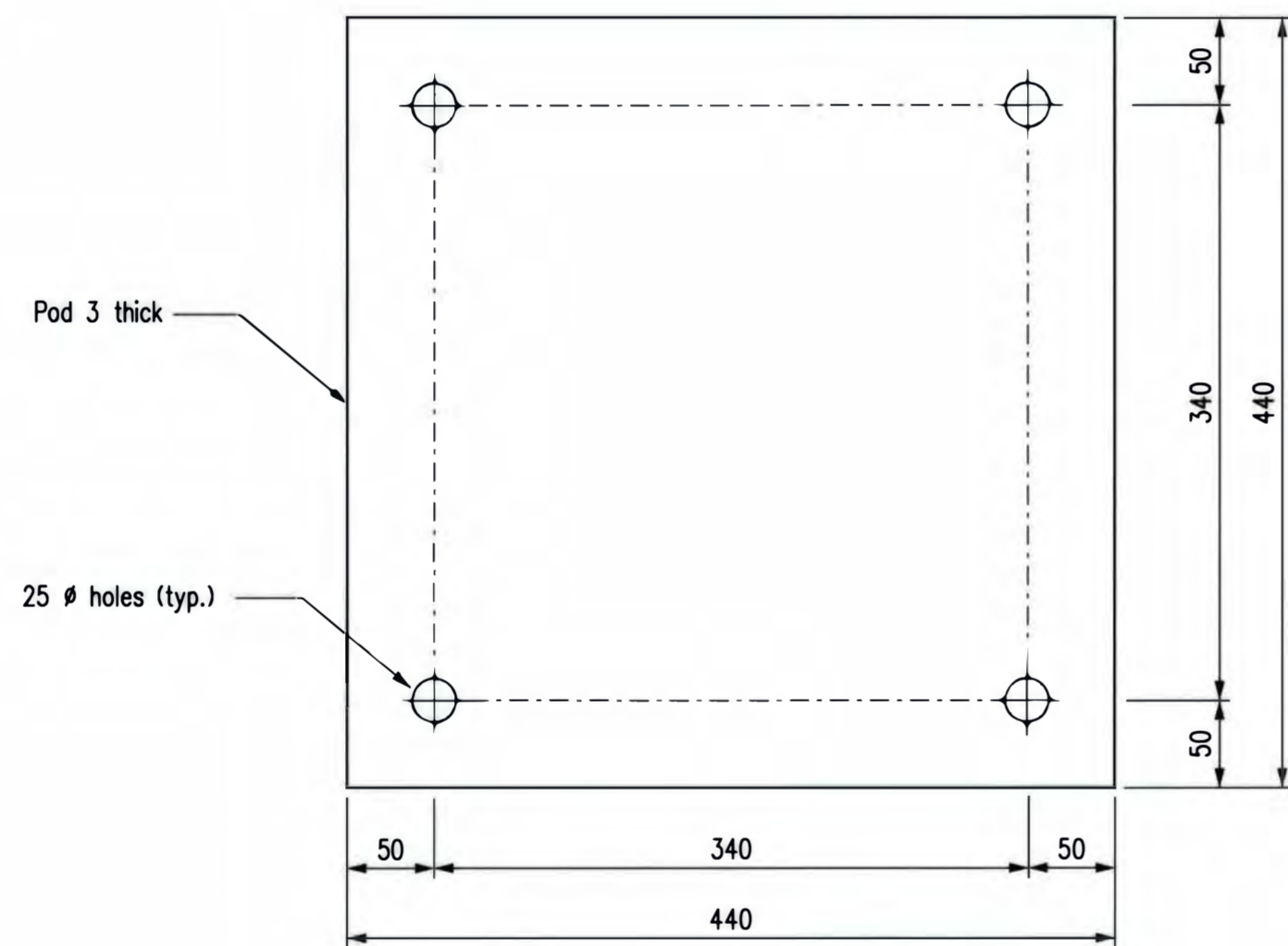
PLAN
BASE PLATE



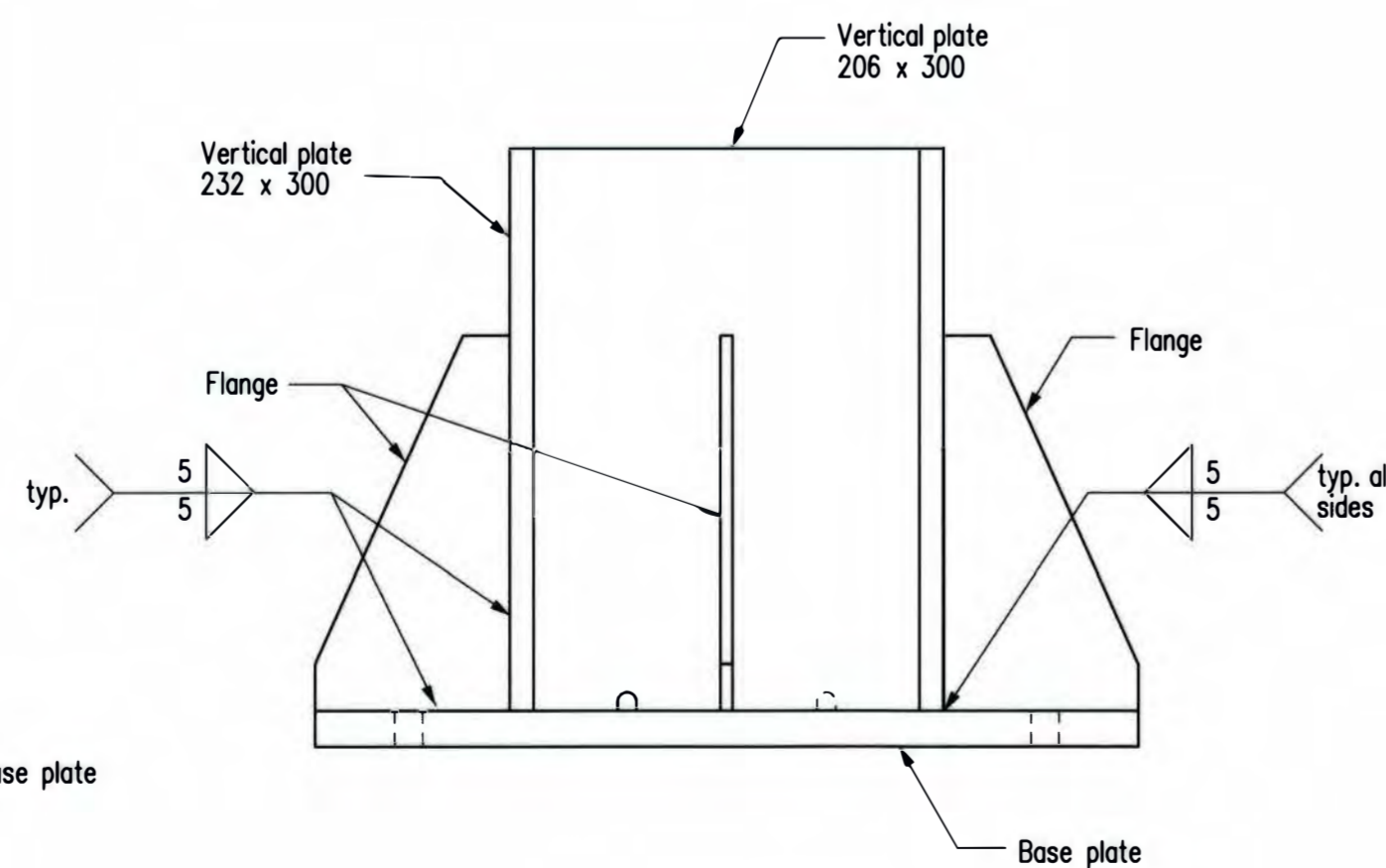
ELEVATION
FLANGE
Scale 1:2



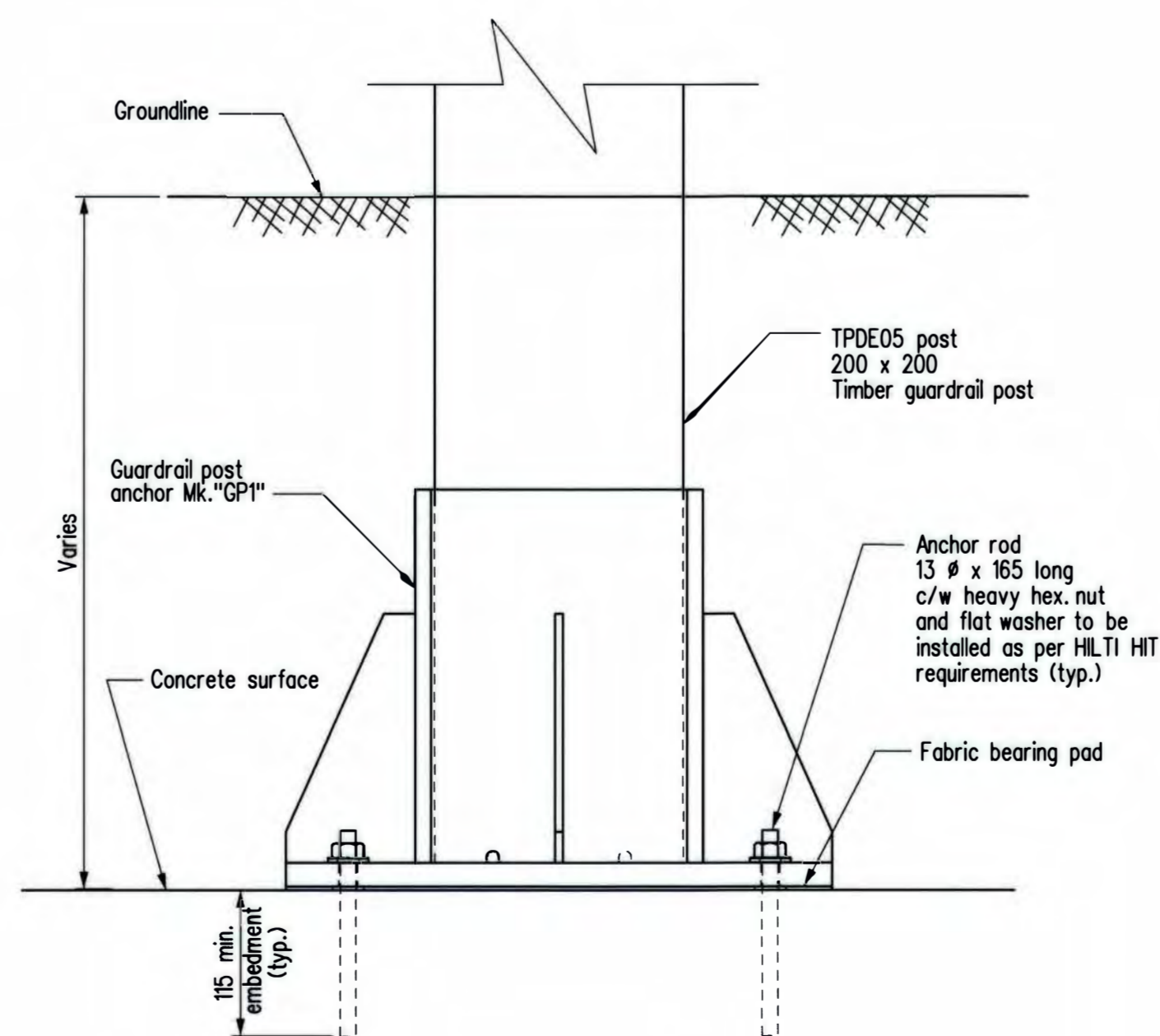
ELEVATION
VERTICAL PLATE
Scale 1:2



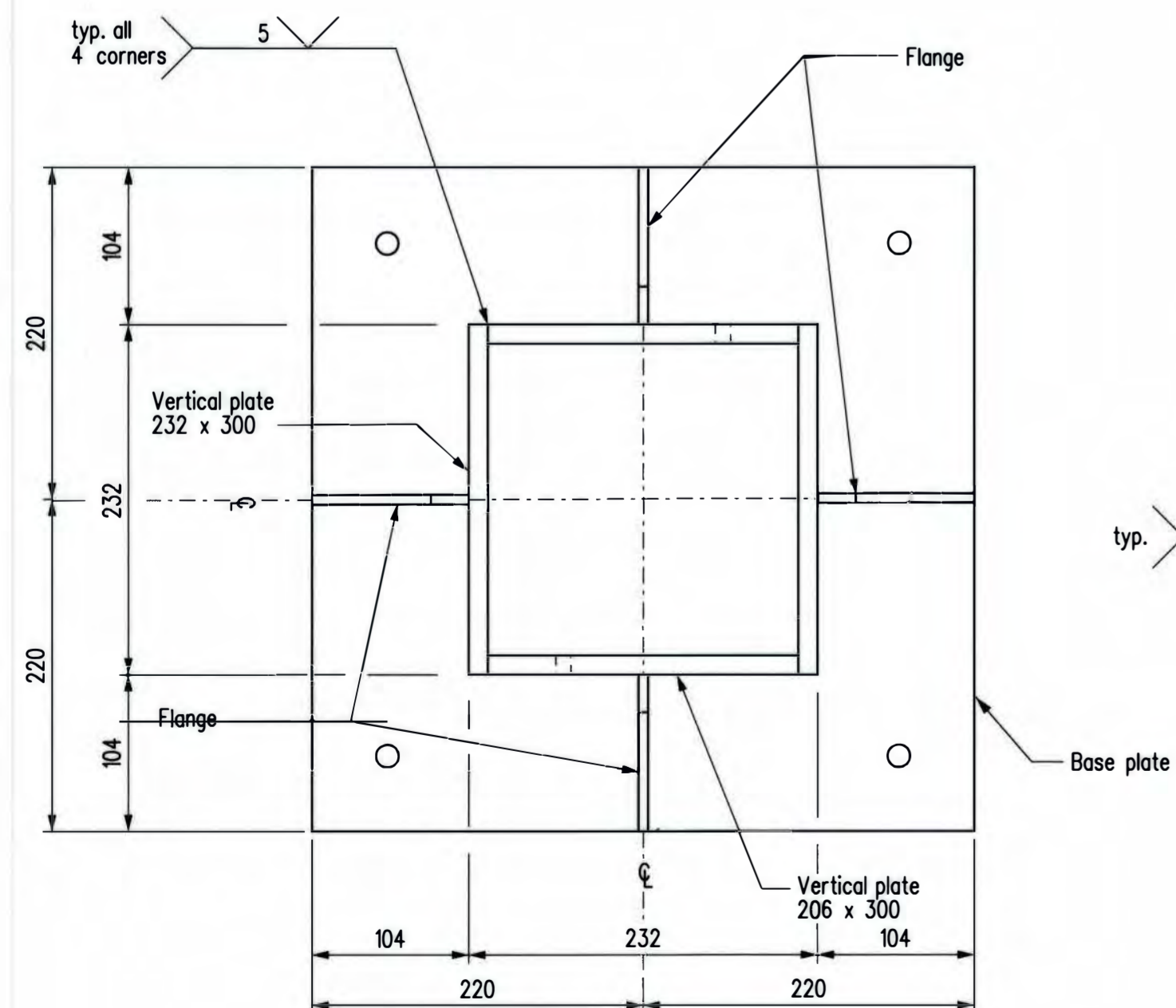
FABRIC BEARING PAD



ELEVATION



ELEVATION
INSTALLATION DETAIL
Scale 1:5



PLAN

GUARDRAIL POST ANCHOR Mk. "GP1"

BILL OF MISCELLANEOUS METAL				SITE No. VARIOUS	
Mk.	No.	DESCRIPTION	SIZE	MASS PER UNIT	TOTAL MASS
GP1	1	Guardrail post anchor	galvanized after fabrication		57.82
Each post to be fabricated from :					
		1 - Base plate	PL19 thick, 440 x 440	28.875	
		2 - Vertical plates	PL12.7 thick, 206 x 300	12.309	
		2 - Vertical plates	PL12.7 thick, 232 x 300	13.878	
		4 - Flanges	PL6.4 thick, 200 x 104	2.763	
				57.825	
4		Anchor rod c/w heavy hex. nut and flat washer	13 dia. x 165 long, galvanized	0.410	1.64
1		Fabric bearing pad	As detailed, Fabreka SA-47 pad or equivalent		
TOTAL in kg =					59.46

NOTES:

- Steel shall conform to CSA-G40.21 Grade 350 MPa steel or better.
- Anchor rod shall meet the requirements of ASTM A193, Grade B7.
- All material in the above Bill shall be galvanized in accordance with CAN/CSA-G164-M92.
- Welding shall meet the current requirements of the American Welding Society, Structural Welding Code ANSI/AASHTO/AWS D.15.
- Use grout pad to level concrete slab prior to installing guardrail post anchor Mk. "GP1".
- The adhesive for the anchor rod shall be HILTI HIT HY 150 Max Adhesive or equivalent approved by the Engineer.

STANDARD No. : STD RC-TGPAD1		APPROVED BY SIGNATURE : TITLE : DATE :		Original signed by Design Services Engineer A.K.Nelson July 16, 2013	
REVISIONS				GUARDRAIL POST ANCHOR DETAILS	
DATE	BY	DESCRIPTION		RELEASED FOR CONSTRUCTION BY:	
DESIGN SEAL	RECORD SEAL				
Original signed and sealed by Andy Pankratz July 16, 2013				 Infrastructure and Transportation Water Management and Structures	
DESIGN	BY: A.H.P.			DIRECTOR _____ DATE _____	
CHECKED: M.F.B.				STRUCTURES DESIGN AND CONSTRUCTION BRANCH	
DETAILS	BY: N.J.			SCALE: 1:4 or _____ SHEET No. _____	
CHECKED: A.H.P.				As Shown _____ SITE No. _____	