

SU.1 GP2 SU.2 SU.3 SU.4

**END SPAN** **INTERMEDIATE SPAN** **END SPAN**

RAILS				SLEEVES		RAILPOSTS	
T1	T2	B1	B4	ST2	SB2	GP1	GP2
2	2	2	2	2	2	12	2

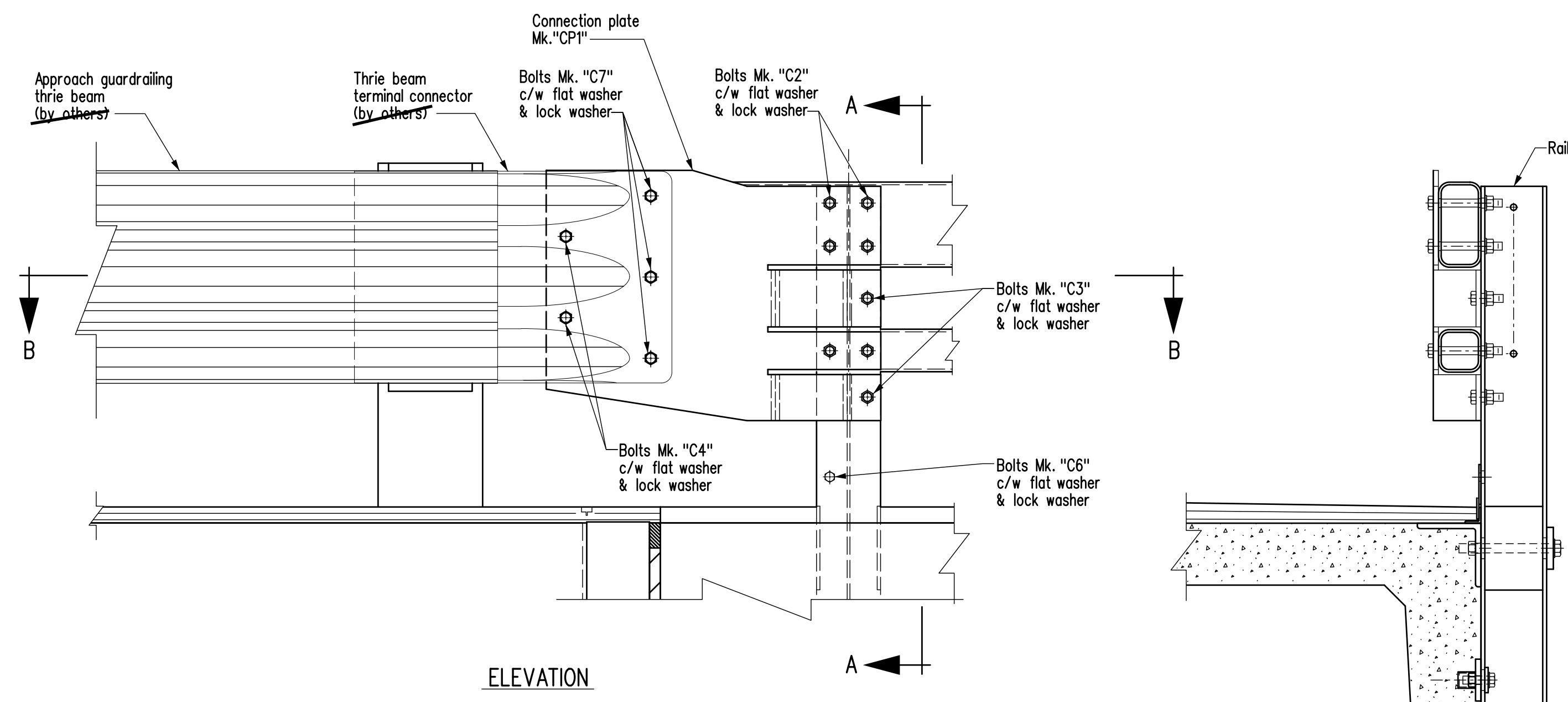
RAILS		SLEEVES	
T3	B5	ST1	SB1
2	2	2	2

RAILS			SLEEVES		RAILPOSTS
T1	B1	B3	ST2	SB2	GP1
4	2	2	2	2	14

RAILS		SLEEVES	
T3	B5	ST1	SB1
2	2	2	2

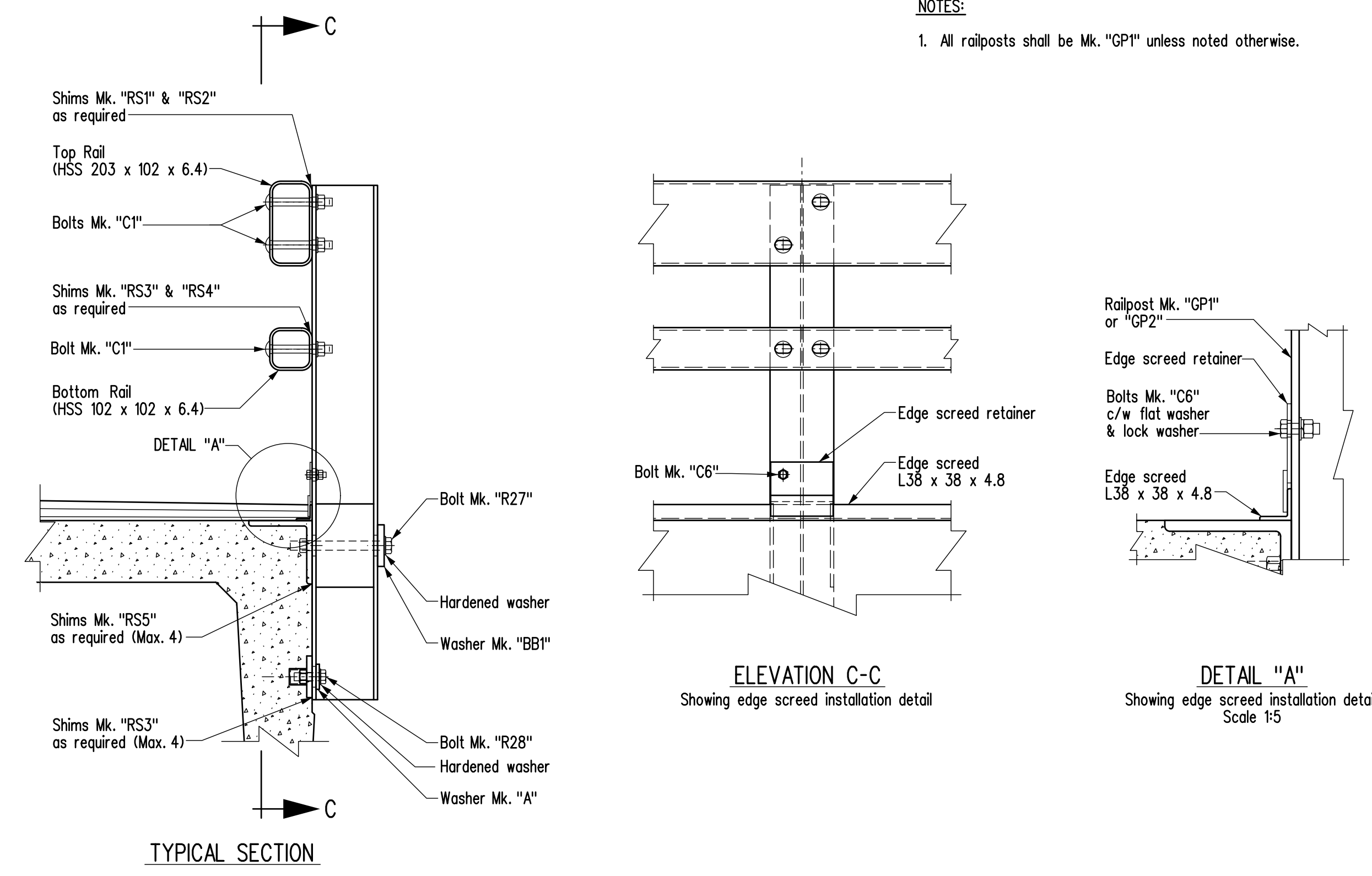
RAILS				SLEEVES		RAILPOSTS	
T1	T2	B1	B4	ST2	SB2	GP1	GP2
2	2	2	2	2	2	12	2

**RAILING LAYOUT**  
Not to Scale



ELEVATION

SECTION A-A

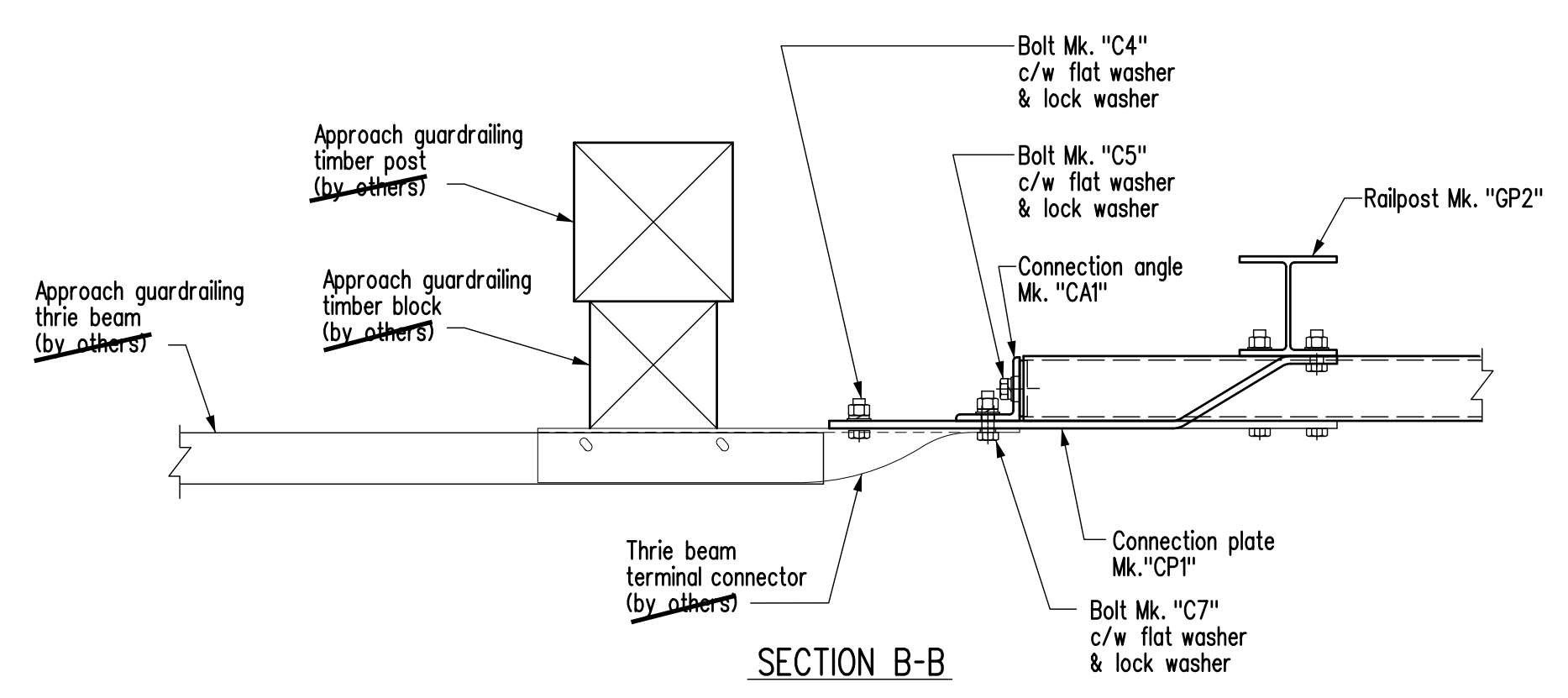


TYPICAL SECTION

ELEVATION C-C  
Showing edge screed installation detail

DETAIL "A"  
Showing edge screed installation detail  
Scale 1:5

**NOTES:**  
1. All railposts shall be Mk. "GP1" unless noted otherwise.

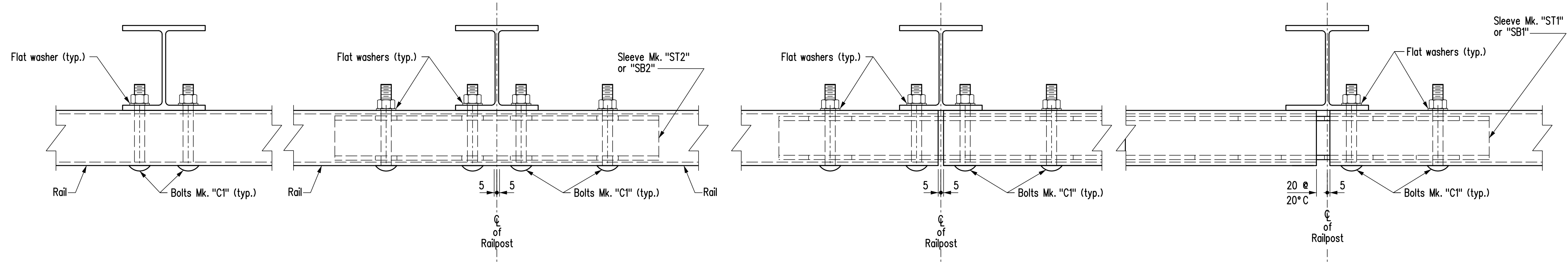


SECTION B-B

**APPROACH RAIL CONNECTION DETAILS**

**RAILPOST ERECTION DETAILS**

**NOTES:**  
1. High strength bolts Mk. "R27" & "R28" shall be tightened by turn-of-nut method as per Specification 1061. These bolts to be supplied by the Girder Fabricator. For quantities see Bill of Miscellaneous Metal on Girder sheet.  
2. High strength bolted connection may be shimmed to a maximum of 12 mm with shims Mk. "RS3" & "RS4".



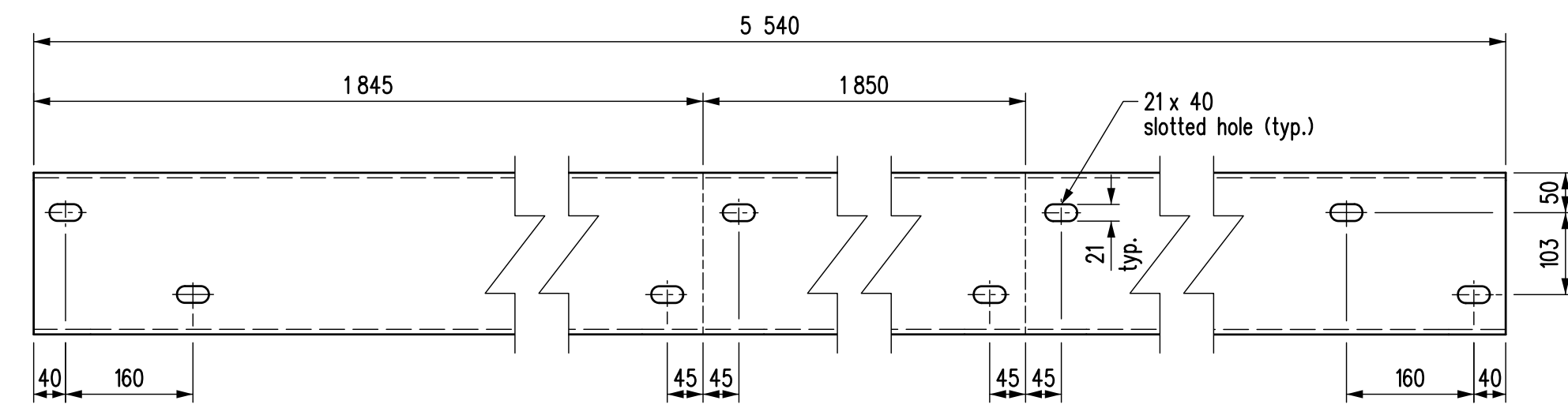
TYPICAL OF CONTINUOUS RAILS

RAIL END CONNECTION

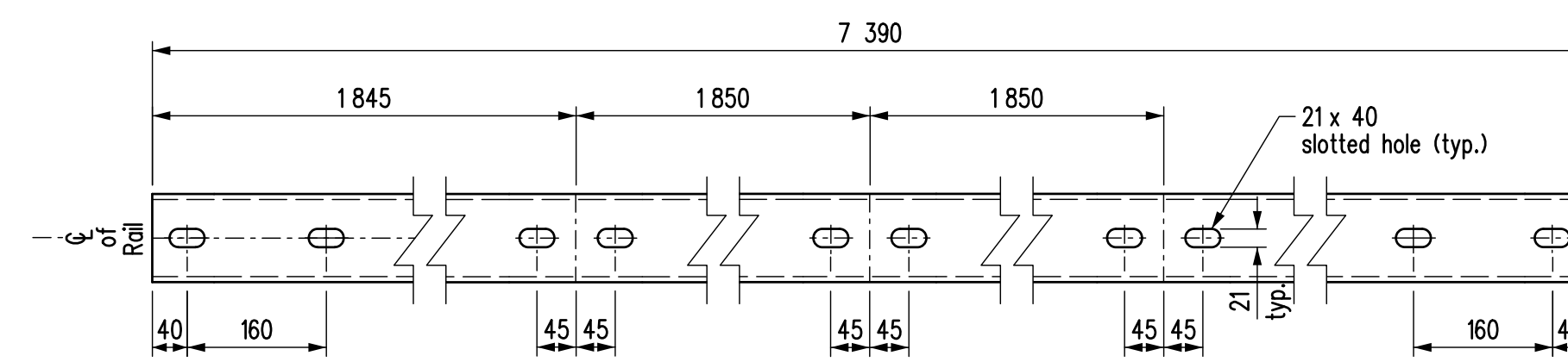
TYPICAL AT PILE BENT

**RAILING ERECTION DETAILS**  
Scale 1:5

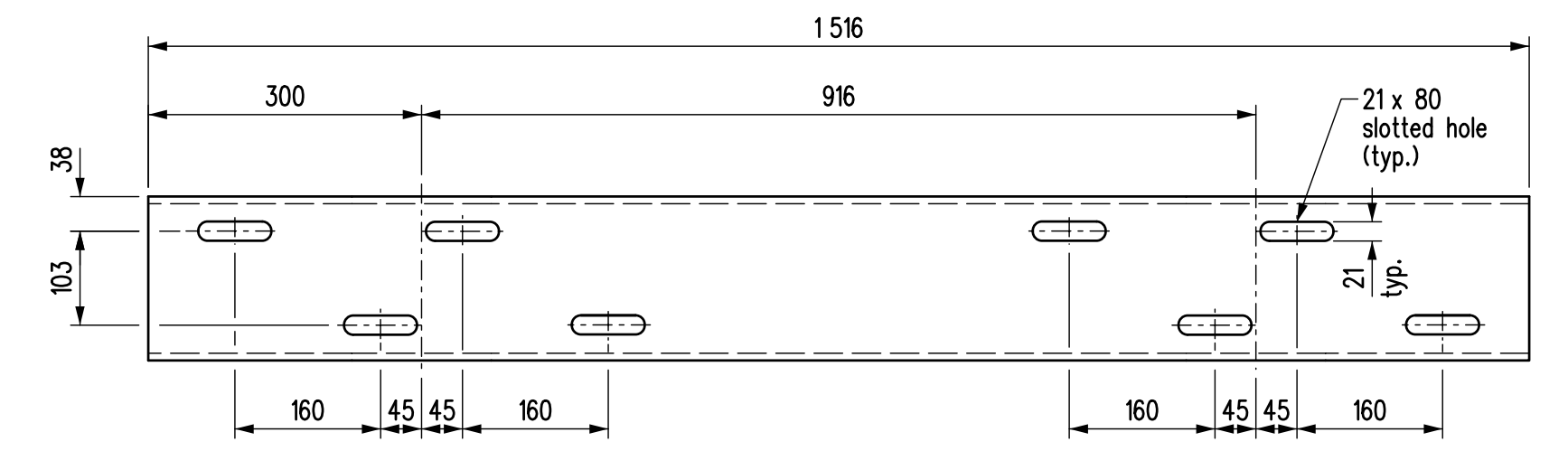
REVISIONS		RAILING LAYOUT AND DETAILS	
DATE	DESCRIPTION		
2021/11/08	A.H.P. Removed (by others)	<div style="text-align: center;">   <b>Manitoba</b>                      Infrastructure                      Water Management and Structures                 </div>	
Original signed and sealed by Andy Pankratz July 2, 2020			
APPROVED BY: Original signed by John Logan November 8, 2020		DIRECTOR OF STRUCTURES	
DESIGN	BY: A.H.P.	DATE	
	CHECKED: A.H.P.	SCALE: 1:10	SHEET No. 1 of 3
DETAILS	BY: K.P./N.J.	of QS shown	STD No. PPCC_PR_12m_R003
	CHECKED: A.H.P.		



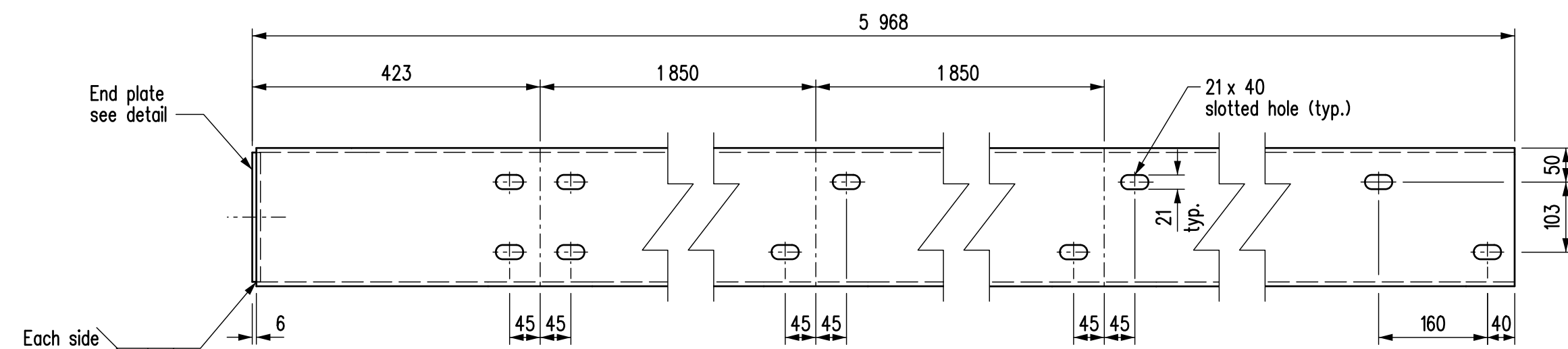
Mk. "T1"



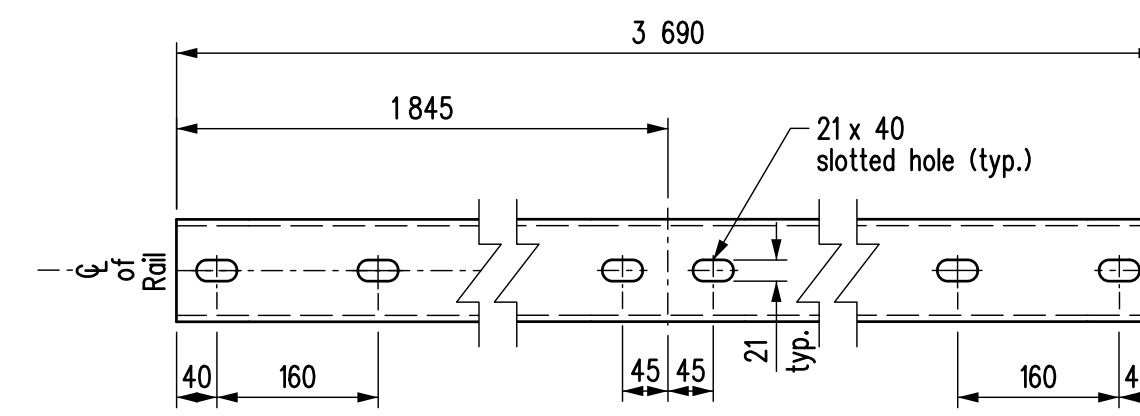
Mk. "B1"



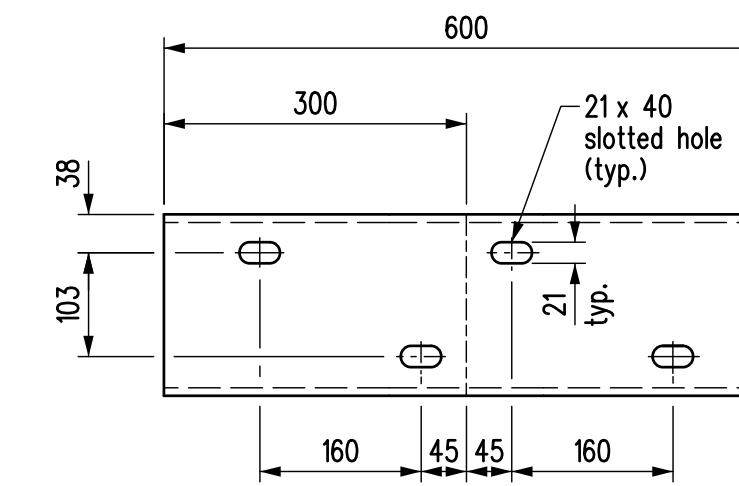
Mk. "ST1"



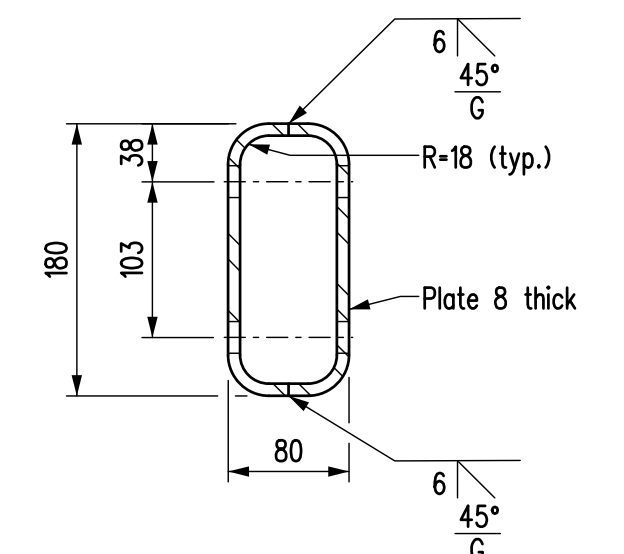
Mk. "T2"



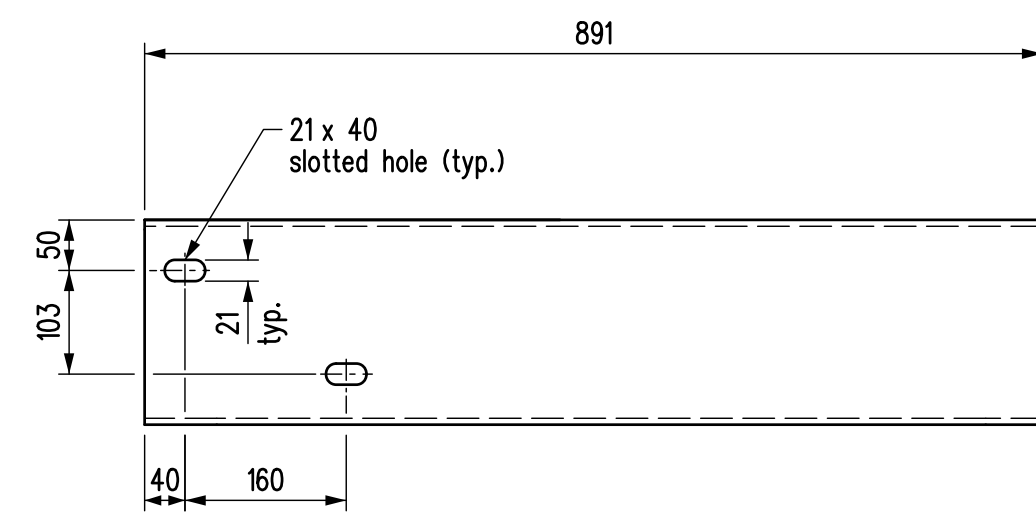
Mk. "B3"



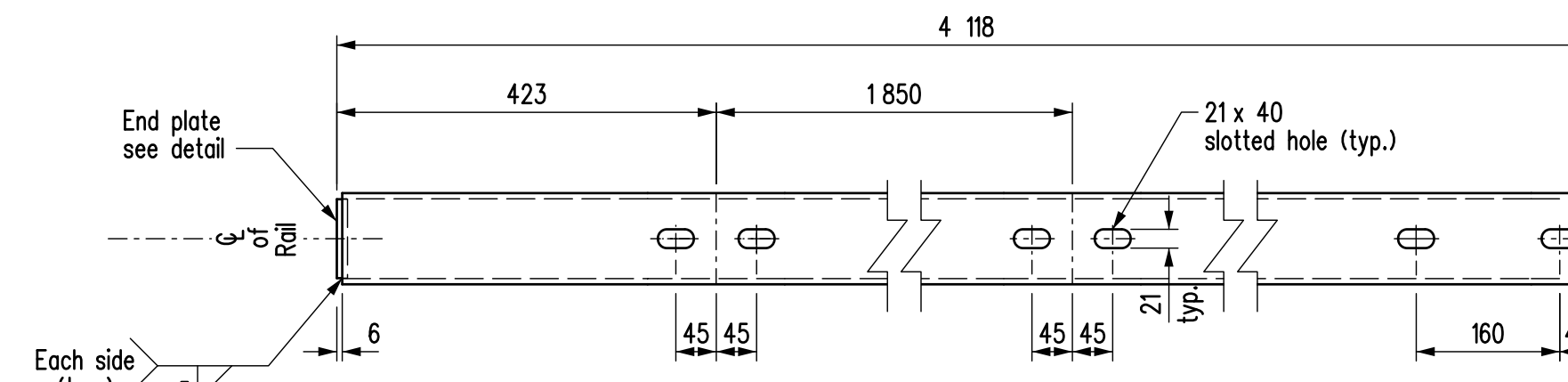
Mk. "ST2"



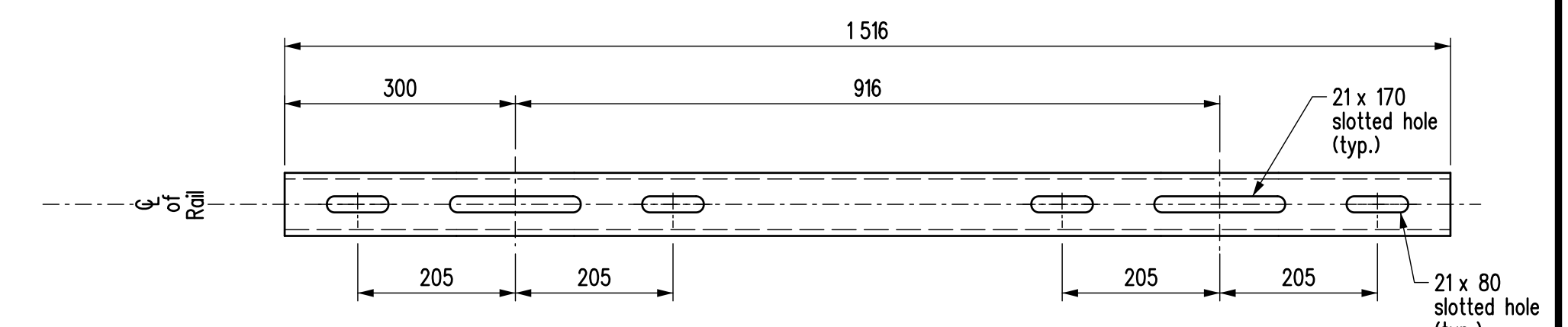
TYPICAL CROSS SECTION  
For Mk. "ST1" & "ST2"  
Scale 1:5



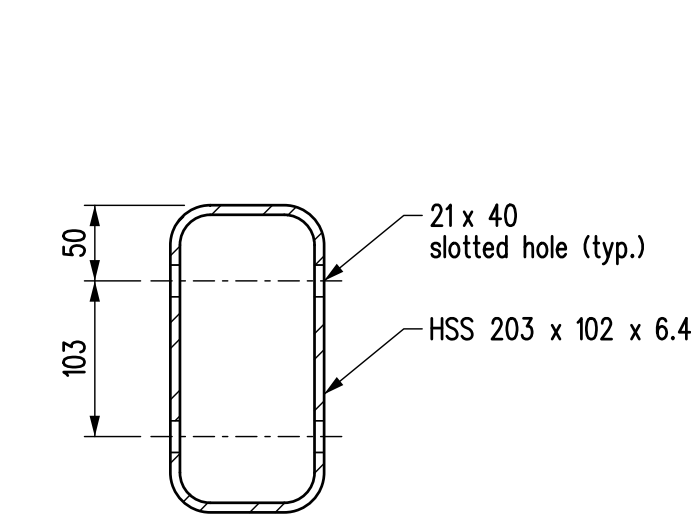
Mk. "T3"



Mk. "B4"

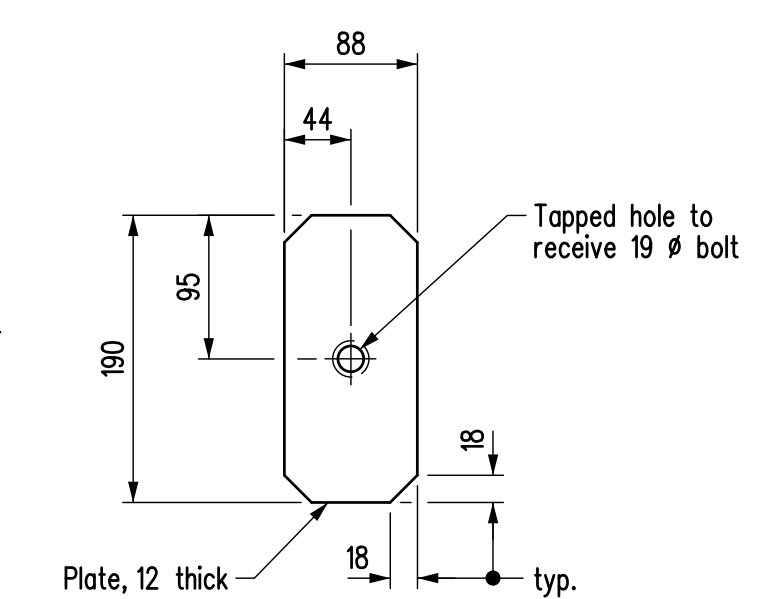


Mk. "SB1"

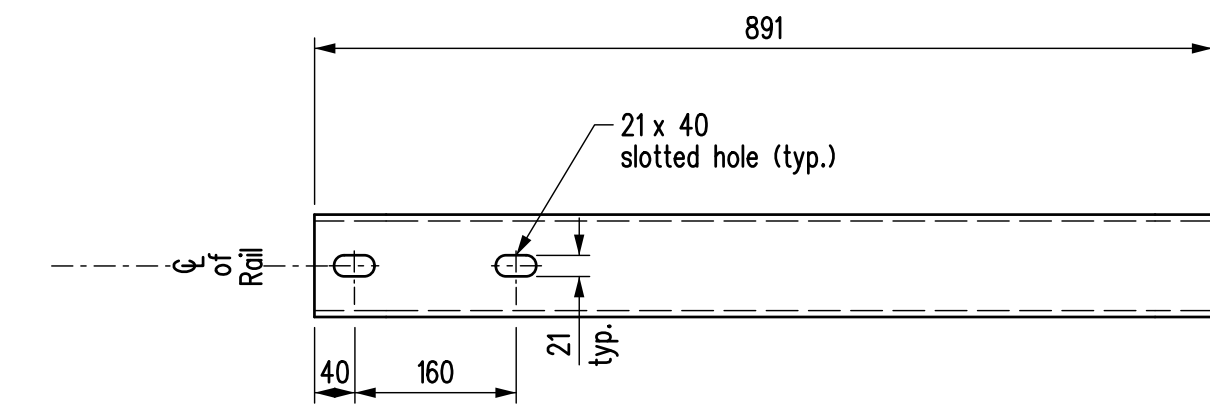


TYPICAL CROSS SECTION  
Typical for rail Mk. "T1", "T2" & "T3"  
Scale 1:5

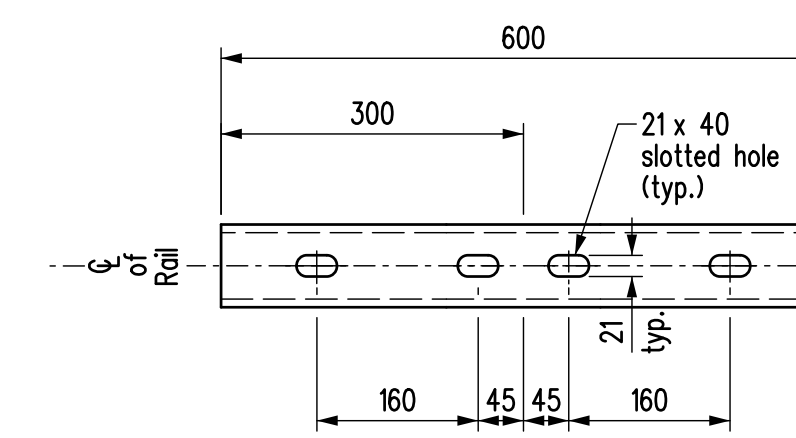
**DETAILS OF TOP RAILS**



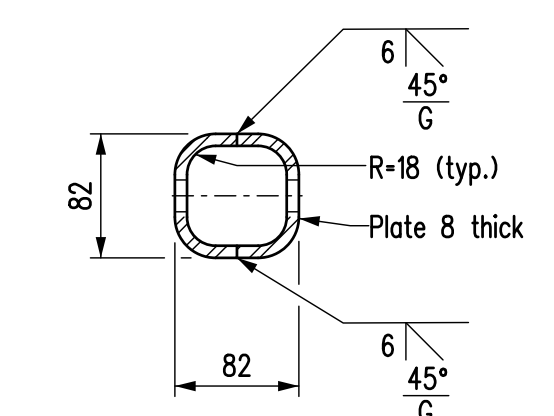
END PLATE  
For rail Mk. "T2"  
Scale 1:5



Mk. "B5"

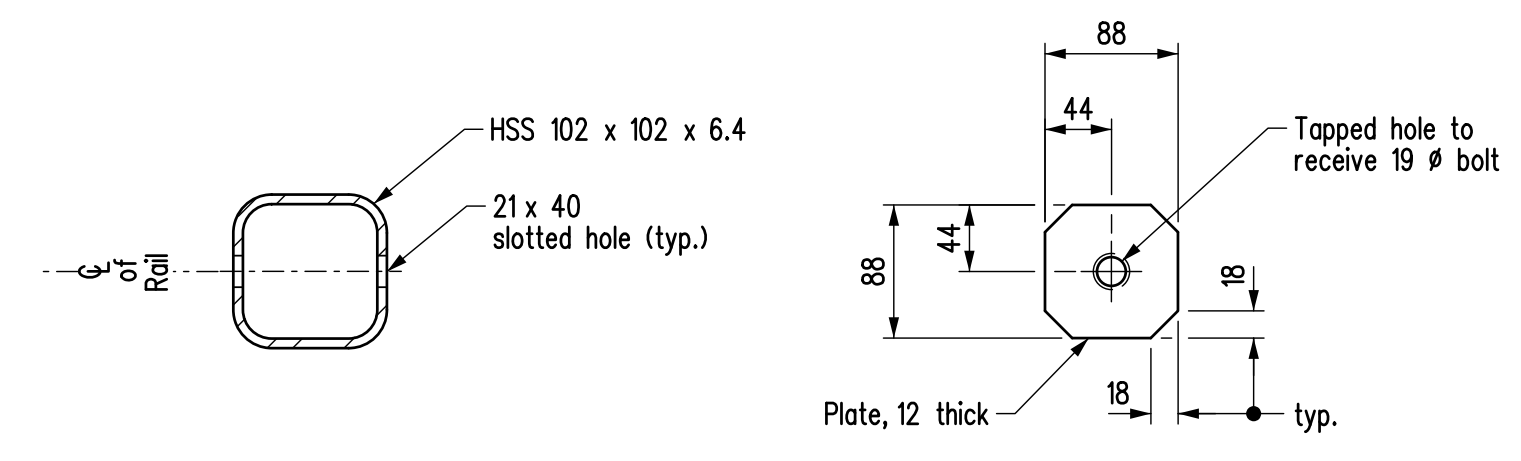


Mk. "SB2"



TYPICAL CROSS SECTION  
For Mk. "SB1" & "SB2"  
Scale 1:5

**DETAILS OF SLEEVES**



END PLATE  
For rail Mk. "B4"  
Scale 1:5

**DETAILS OF BOTTOM RAILS**

**NOTES:**

1. It is imperative that all rail and sleeve holes in each pair of holes be opposite to each other.
2. The length of slotted holes shall not be less than shown.
3. The width and height of the sleeves shall not exceed the dimensions shown.
4. All dimensions are in millimeters (mm).

REVISIONS		RAILING DETAILS	
DATE	BY	DESIGN	APPROVED BY:
		DESIGN SEAL	Original signed by John Logan November 8, 2020
		RECORD SEAL	DIRECTOR OF STRUCTURES
			DATE
			SCALE:
			1:7.5
			SHEET No. 2 of 3
			or as shown
			STD No. PPCC_PR_12m_RD03



Original signed and sealed by Andy Pankratz July 2, 2020

DESIGN BY: A.H.P.  
CHECKED: A.H.P.  
DETAILS BY: K.P.  
CHECKED: A.H.P.

