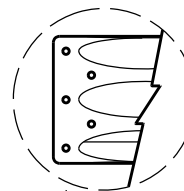
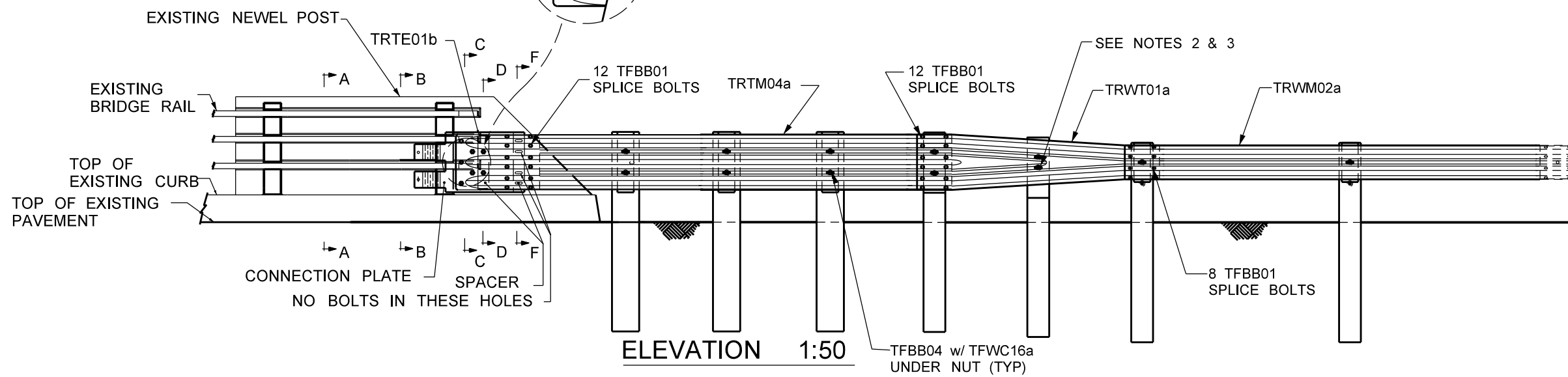


PLAN 1:50

CONNECTION DETAILS TO BE ESTABLISHED ON A SITE-BY-SITE BASIS



BOLTS MK "C3" C/W PLATE
WASHER UNDER LOCKNUT (USE WHERE NO INTERFERENCE - MIN 3 BOLTS)



ELEVATION 1:50

NOTES:

1. ALL BOLTS SHALL CONFORM TO THE REQUIREMENTS OF ASTM A325 EXCEPT WHERE NOTED OTHERWISE.
2. BOLT TFBB04 TO BE INSTALLED IN UPPER HOLE OF RAIL, BLOCK AND POST.
3. BLOCKOUT TO BE NAILED TO POST TO PREVENT BLOCK ROTATION USING 90 mm NAIL.

ALL SCALES ARE APPROXIMATE

NOTE: Original structural drawing sealed by J. Lukashenko P.Eng., Feb.23, 2000. It is filed in the Bridges and Structures Branch.

REVISIONS		
DATE	DESCRIPTION	BY
2006-05	ANCHOR REVISED	HPL

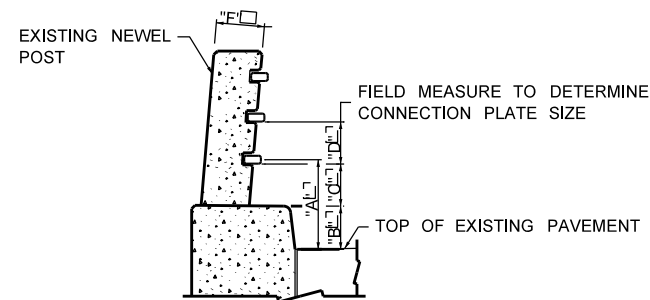
Manitoba Infrastructure and Transportation
TRAFFIC ENGINEERING



NESTED THRIE-BEAM TO 3 RAIL NEWEL POST TRANSITION

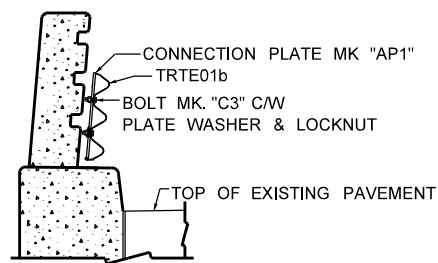
SHEET NO	1 OF 3
DATE:	2006 - 05
DRAWN:	D.C.

TSTB08

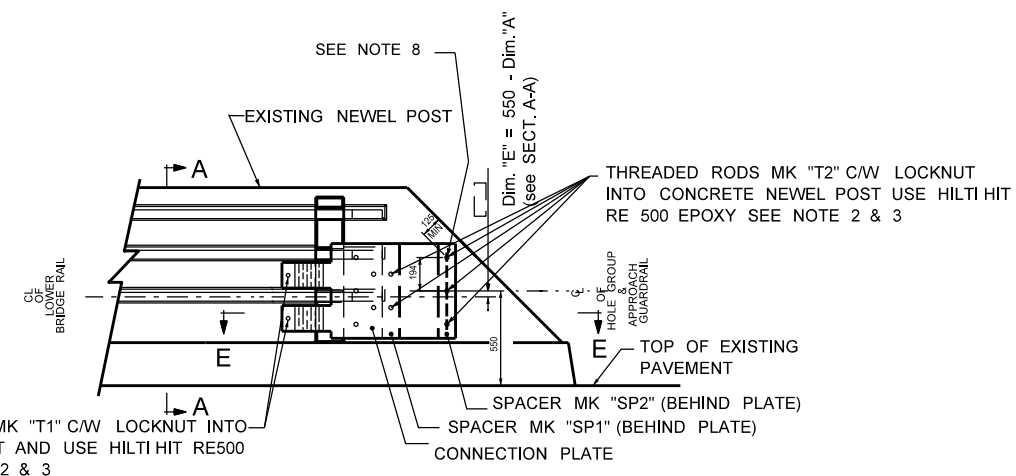


SECTION A-A 1:50

Field measurements

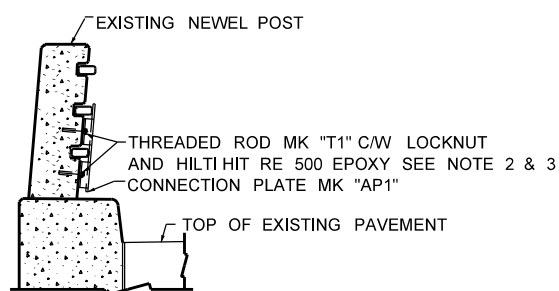


SECTION C-C 1:50

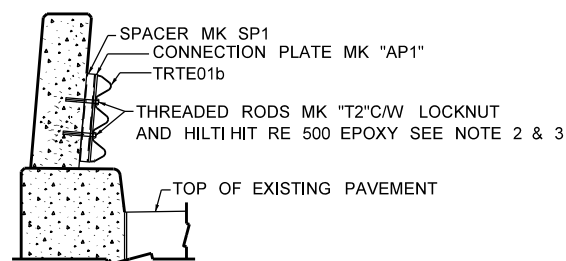


ELEVATION 1:50

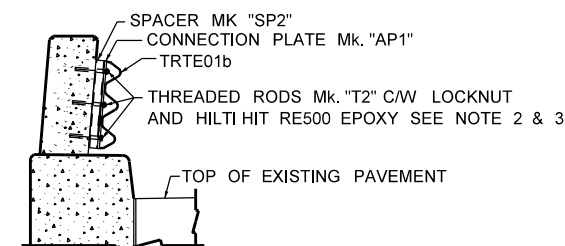
SHOWING CONNECTION PLATE ASSEMBLY



SECTION B-B 1:50



SECTION D-D 1:50



SECTION F-F 1:50

NOTES

1. THE CONNECTION PLATE SHALL BE USED AS A TEMPLATE TO CORE HOLES INTO THE NEWEL POST.
2. CARE SHALL BE TAKEN TO ENSURE HOLES ARE CORED ACCURATELY WITH MINIMAL DAMAGE TO NEWEL POST. USE OF ROTARY HAMMER DRILL WILL NOT BE ALLOWED.
3. HOLES FOR THREADED RODS MK "T1" & "T2" SHALL BE CORED INTO THE NEWEL POST AT 2 mm LARGER THAT THE BOLT DIAMETER.
4. ALL STEEL PLATES SHALL CONFORM TO THE REQUIREMENTS OF CAN/CSA-40.21-M92GRADE 300W
5. ALL BOLTS SHALL CONFORM TO THE REQUIREMENTS OF ASTM A325 EXCEPT WHERE NOTED OTHERWISE.
6. DIMENSIONS SHOWN THUS: \square TO BE FILLED IN USING FIELD MEASUREMENTS.
7. THREADED ROD TO BE EMBEDDED 100 mm INTO THE CONCRETE NEWEL POST.
8. ELIMINATE THE THREADED ROD "T2" ON THE TOP HOLE OF SPACER "SP2" IF THE MINIMUM DIMENSION CAN NOT BE SATISFIED AS A RESULT OF THE TIMBER POST LAYOUT OR SLOPED FACE ANGLE OF THE CONCRETE NEWEL POST; THE DIMENSIONAL TOLERANCE OF 125 mm WILL THEN APPLY TO THE THREADED ROD "T2" IN THE MIDDLE POSITION OF THE SPACER "SP2".

ALL SCALES ARE APPROXIMATE

NOTE: Original structural drawing sealed by J. Lukashenko P.Eng., Feb.23, 2000. It is filed in the Bridges and Structures Branch.

REVISIONS		
DATE	DESCRIPTION	BY
2006-05	ANCHOR REVISED	HPL

Manitoba Infrastructure and Transportation
TRAFFIC ENGINEERING



NESTED THRIE-BEAM TO 3 RAIL NEWEL POST TRANSITION

SHEET NO	2 OF 3
DATE:	2006 - 05
DRAWN:	D.C.

TSTB08

