

POST	OFFSEET FROM TANGENT CL TO TRAFFIC FACE	DISTANCE FROM BC ALONG TANGENT LINE
1	1020	11384
2	650	9525
3	550	7600
4	310	5707
5	140	3807
6	35	1905
7	0	0

- NOTES:**
1. THE 1020 FLARE AT THE BCT TERMINAL END IS ESSENTIAL TO PROPER BCT PERFORMANCE.
 2. DIMENSIONS SHOWN FOR POST LAYOUT ARE TO THE FACE OF THE POSTS.

NOTE: ALL SCALES ARE APPROXIMATE

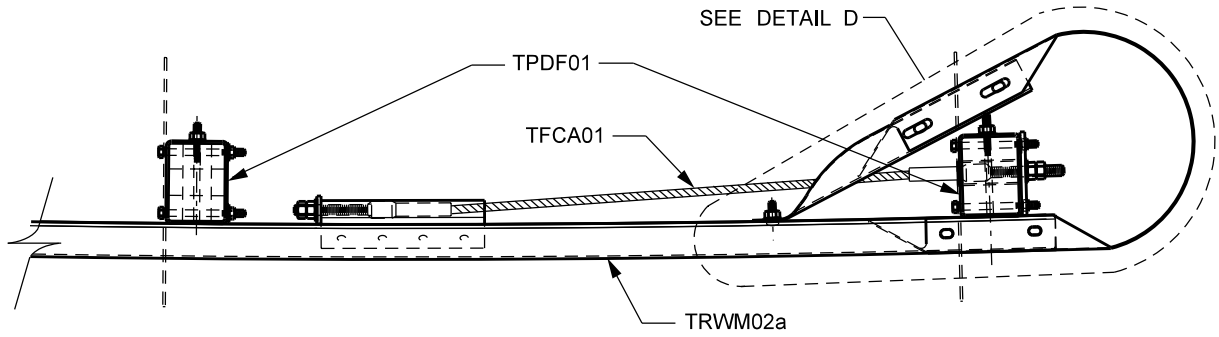
REVISIONS		
DATE	DESCRIPTION	BY

Manitoba Infrastructure and Transportation
TRAFFIC ENGINEERING

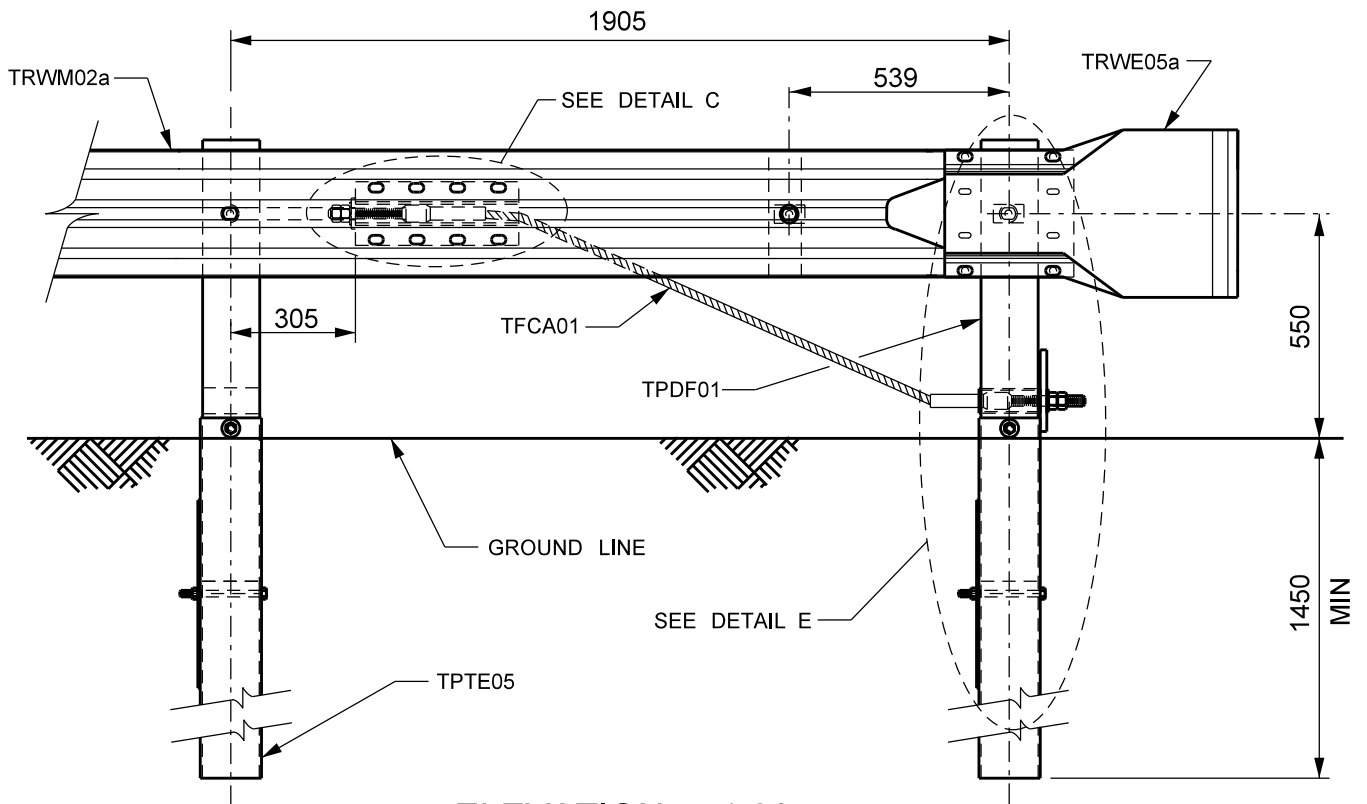


BREAKAWAY CABLE TERMINAL

SHEET NO	1 OF 4
DATE:	2002 - 09
DRAWN:	D.C.
TSEW03a	



PLAN 1:20



ELEVATION 1:20

DETAIL A

ALL SCALES ARE APPROXIMATE

REVISIONS		
DATE	DESCRIPTION	BY

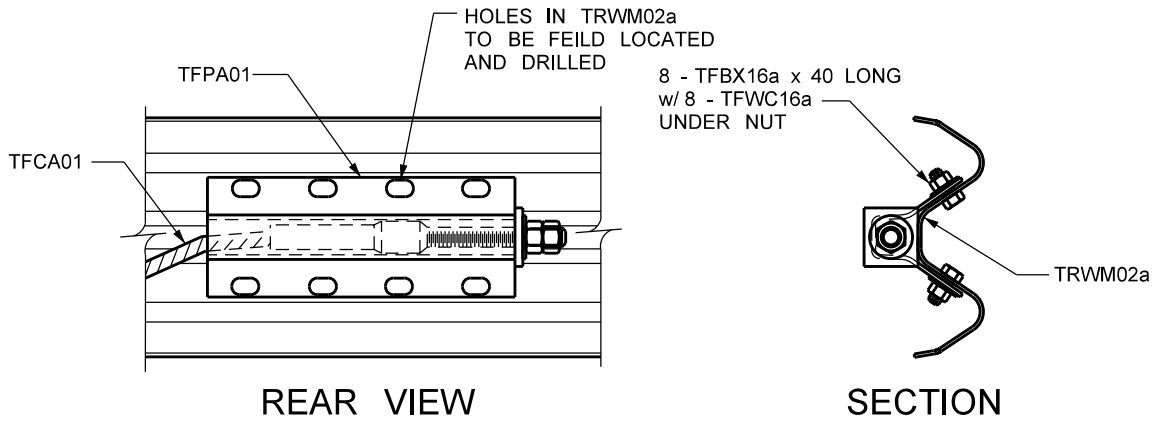
Manitoba 
**Infrastructure and
 Transportation**
 TRAFFIC ENGINEERING



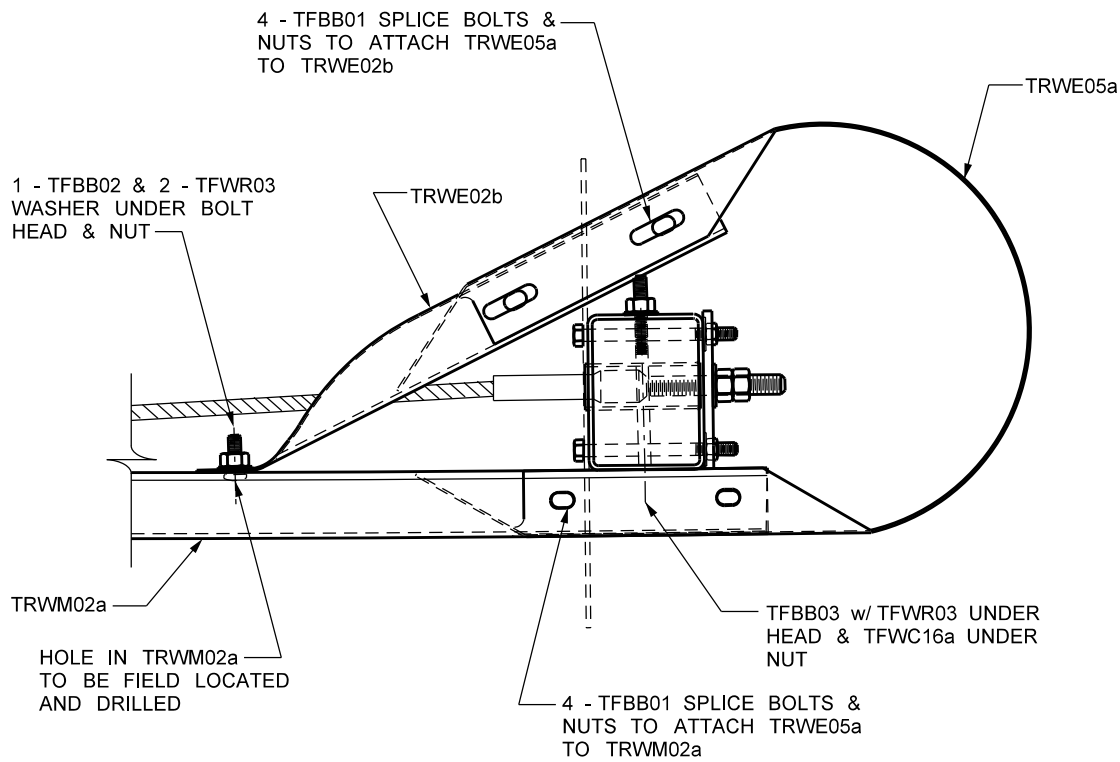
**BREAKAWAY
 CABLE TERMINAL**

SHEET NO	2 OF 4
DATE:	2002 - 09
DRAWN:	D.C.

TSEW03a



DETAIL C : ANCHOR PLATE ASSEMBLY DETAILS




DETAIL D : END SECTION ASSEMBLY DETAILS

SCALE 1:10

ALL SCALES ARE APPROXIMATE

REVISIONS		
DATE	DESCRIPTION	BY

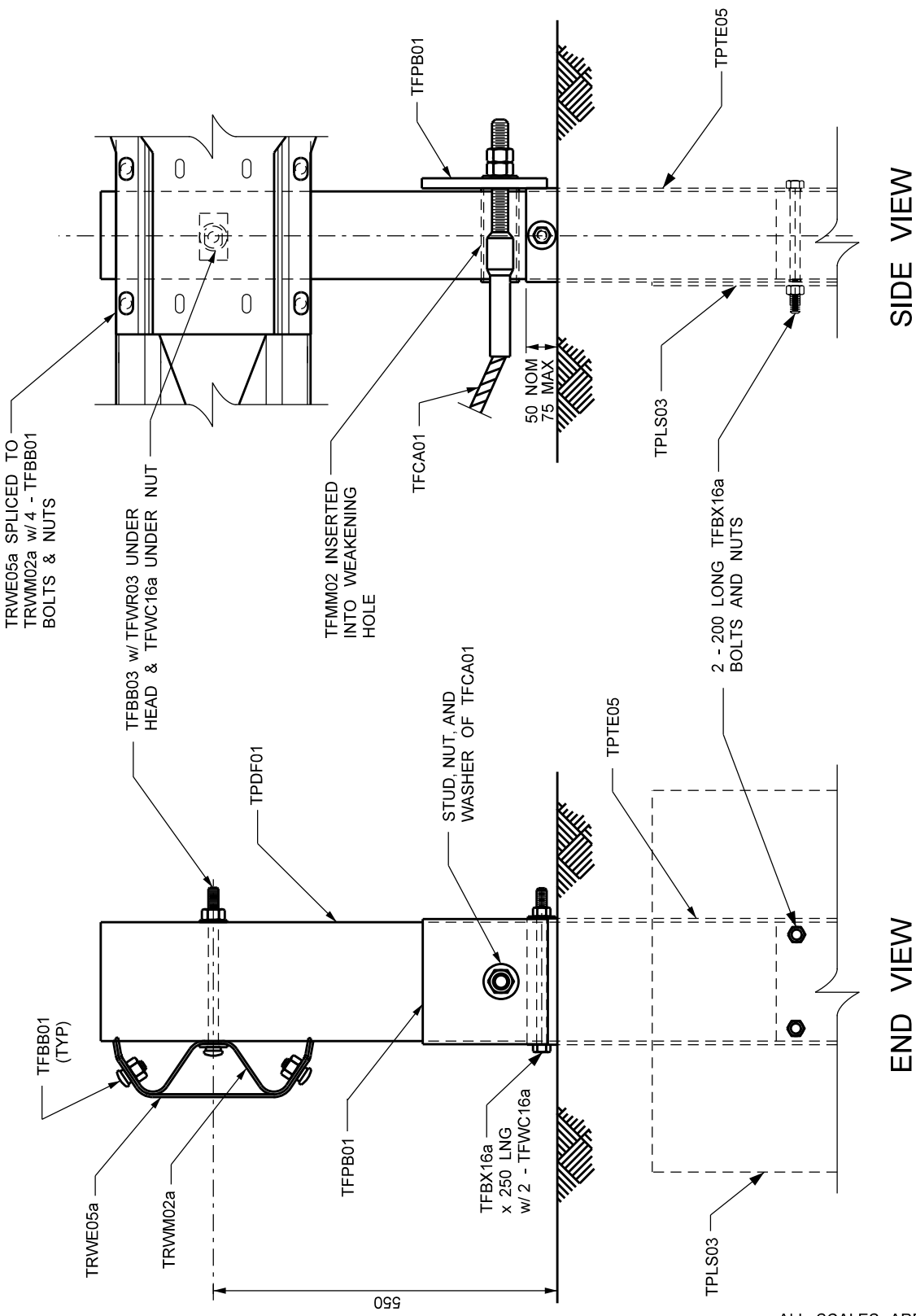
Manitoba 
**Infrastructure and
 Transportation**
 TRAFFIC ENGINEERING

PROVINCE OF MANITOBA
 H.P. LARSEN
 REGISTERED PROFESSIONAL ENGINEER

**BREAKAWAY
 CABLE TERMINAL**

SHEET NO	3 OF 4
DATE:	2002 - 09
DRAWN:	D.C.

TSEW03a




SIDE VIEW

END VIEW

DETAIL E
SCALE 1:10

ALL SCALES ARE APPROXIMATE

REVISIONS		
DATE	DESCRIPTION	BY

Manitoba 
Infrastructure and Transportation
 TRAFFIC ENGINEERING



**BREAKAWAY
CABLE TERMINAL**

SHEET NO	4 OF 4
DATE:	2002 - 09
DRAWN:	D.C.
TSEW03a	