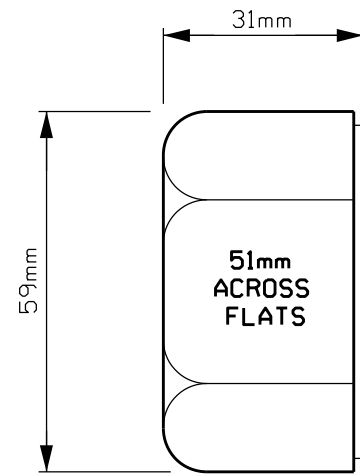
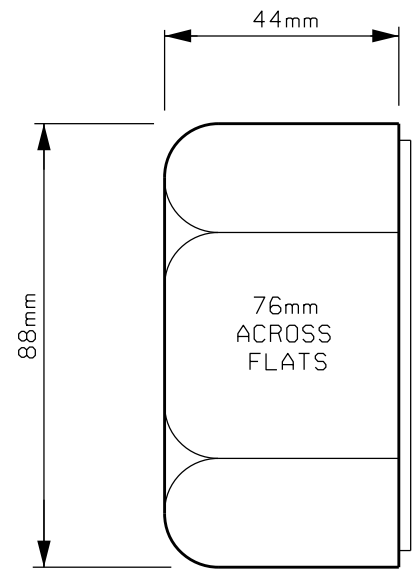


29mmØ HEAVY HEX NUT (UNC 7 TPI)



32mmØ HEAVY HEX NUT (UNC 7 TPI)




50mmØ FINISHED HEX NUT (UNC 4.5 TPI)

BOLT TIGHTENING SCHEDULE					
DIA. (mm)	TENSION		TORQUE		
	(kips)	(kN)	(ft*lb)	(N*m)	
29	30.6	136	600	813.5	
32	37.8	168	825	1118.5	
50	72.6	323	2540	3443.8	

NOTES:

1. ALL DIMENSIONS ARE IN MILLIMETERS.
2. ANCHOR BOLTS TO BE MADE OF G40.21-44W MATERIALS, USE SOLID ROUNDS.
3. THE TOP 300mm OF THE ANCHOR BOLT IS TO BE GALVANIZED.
4. ALL NUTS TO BE TAPPED OVERSIZE.

REVISIONS	DATE	DESCRIPTION	BY
03-PAPER ORIGINAL			SBC

Manitoba 
 Infrastructure and
 Transportation
 TRAFFIC ENGINEERING

TRAFFIC SIGNAL / SIGN ANCHOR BOLTS

ORIGINAL APPROVED BY: _____ TOM McDERMOTT _____

SCALE: N.T.S.
 DATE: 11-2004
 PREP. BY: D.G.C.
 E-026