

1. ADAPTOR PEDESTAL SHALL BE FABRICATED FROM 5 mm ALUMINUM SHEET TYPE 5052-H32 ASTM DESIGNATION B209.
2. ALL EXTERIOR SEAMS SHALL BE CONTINUOUSLY WELDED. ALL EXTERIOR WELDS SHALL BE SMOOTH. WELDING SHALL BE DONE BY GAS TUNGSTON ARC (TIG) PROCESS. ER5356 ALUMINUM ALLOY BARE WELDING ELECTRODES CONFORMING TO AWS A5.10 REQUIREMENTS SHALL BE USED.

3. APPLY AN ANODIC COATING TO ALL SURFACES AFTER CLEANING AND ETCHING.

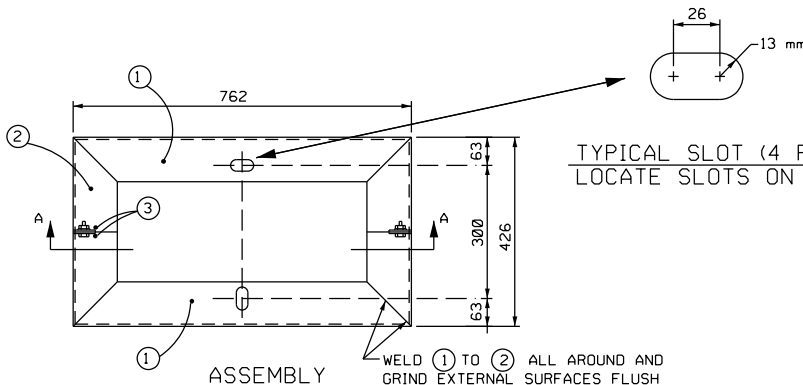
THE ANODIC COATING SHALL CONFORM TO MIL-A-8625C (ANODIC COATINGS FOR ALUMINUM AND ALUMINUM ALLOYS) FOR TYPE II, CLASS I COATING EXCEPT THE OUTER PEDESTAL SURFACE COATING SHALL HAVE A 0.02 mm MINIMUM THICKNESS AND A 420 mg PER dm^2 MINIMUM COATING WEIGHT.

4. TOLERANCES SHALL BE 2 mm UNLESS OTHERWISE SPECIFIED.

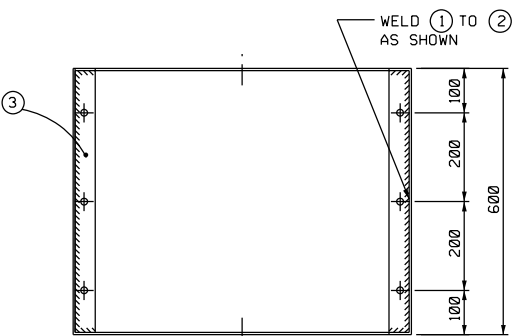
EACH PEDESTAL SHALL BE SUPPLIED WITH 6 (SIX) 13 mm ODAMETER, HEX HEAD, STAINLESS STEEL BOLTS 30 mm LONG C/W STAINLESS STEEL NUTS AND LOCK WASHERS.

5. ALL DIMENSIONS IN MILLIMETRES.

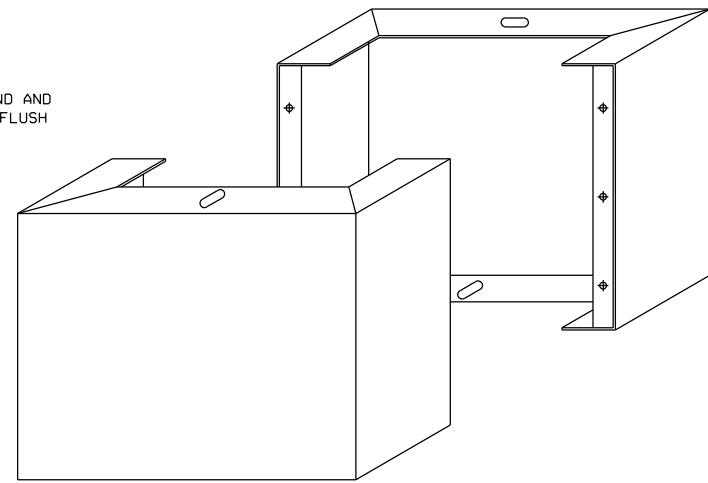
6. FOR SPECIFICATION CLARIFICATIONS CONTACT TOM MCDERMOTT AT MANITOBA TRANSPORTATION AND GOVERNMENT SERVICES, TRAFFIC OPERATIONS BRANCH - TELEPHONE 945-3781



WELD ① TO ② ALL AROUND AND GRIND EXTERNAL SURFACES FLUSH




SECTION A-A



ALL DIMENSIONS ARE IN MILLIMETRES UNLESS INDICATED OTHERWISE

REVISIONS	DATE	DESCRIPTION	BY

Manitoba 
 Infrastructure and
 Transportation
 TRAFFIC ENGINEERING

M-1 ADAPTOR PEDESTAL

ORIGINAL APPROVED BY: LUCIEN GAGNON

SCALE: N.T.S.
 DATE: 05-2002
 PREP. BY: K.D.S.
 E-004b