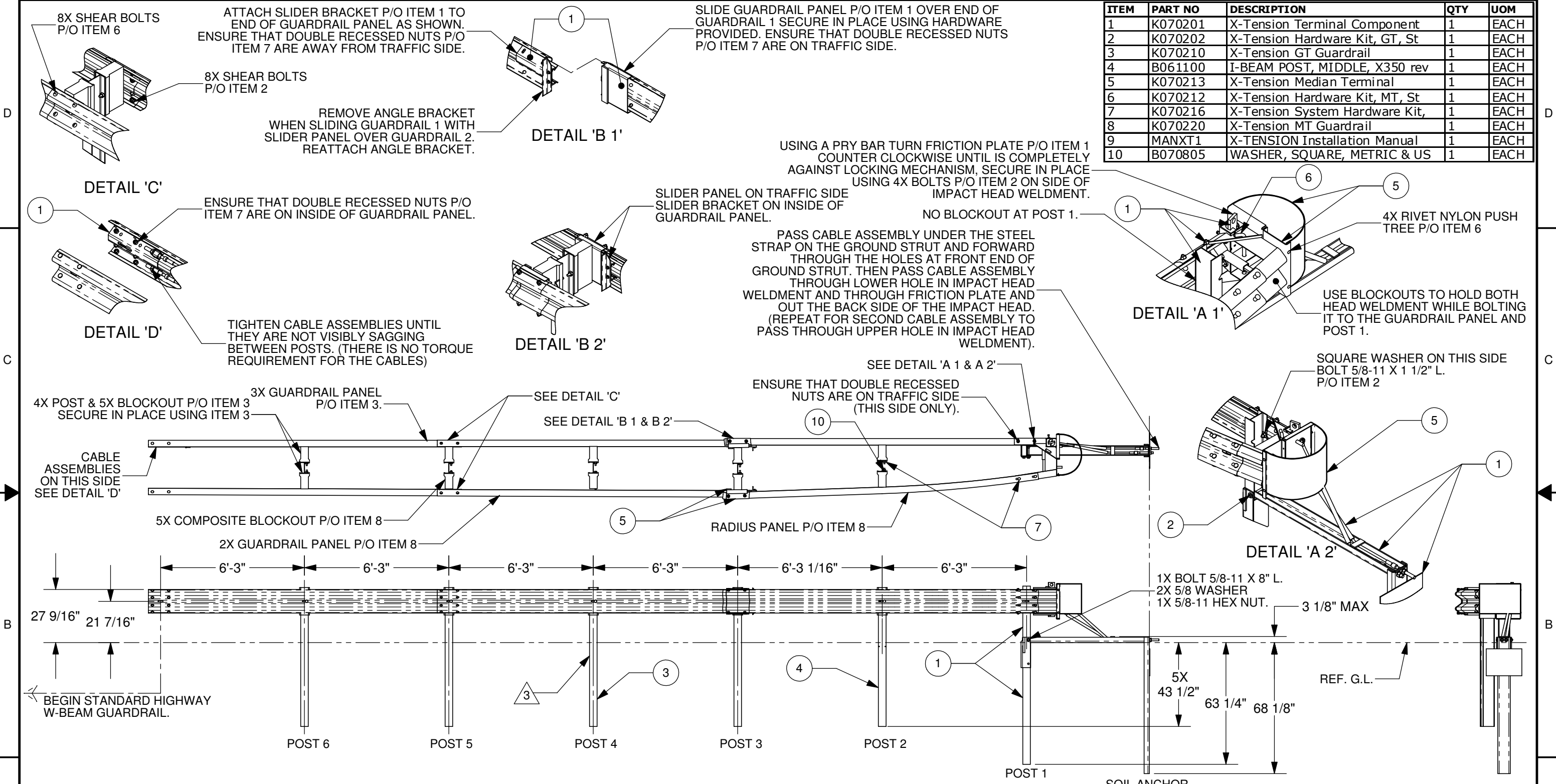


4

3

2

1



ITEM	PART NO	DESCRIPTION	QTY	UOM
1	K070201	X-Tension Terminal Component	1	EACH
2	K070202	X-Tension Hardware Kit, GT, St	1	EACH
3	K070210	X-Tension GT Guardrail	1	EACH
4	B061100	I-BEAM POST, MIDDLE, X350 rev	1	EACH
5	K070213	X-Tension Median Terminal	1	EACH
6	K070212	X-Tension Hardware Kit, MT, St	1	EACH
7	K070216	X-Tension System Hardware Kit,	1	EACH
8	K070220	X-Tension MT Guardrail	1	EACH
9	MANXT1	X-TENSION Installation Manual	1	EACH
10	B070805	WASHER, SQUARE, METRIC & US	1	EACH

- NOTES: UNLESS OTHERWISE SPECIFIED
- SYSTEM TO BE INSTALLED PER MANUFACTURER SPECIFICATIONS.
 - ONLY TIGHTEN THE CABLE ASSEMBLIES USING THE NUTS AT THE CABLE BRACKET (SEE DETAIL 'D'). DO NOT TIGHTEN THE CABLES AT THE FRONT OF THE GROUND ANCHOR.
- 3 WHEN DRIVING STEEL POST, ENSURE THAT A DRIVING CAP WITH TIMBER OR PLASTIC INSERT IS USED TO PREVENT DAMAGE TO THE GALVANIZING TO THE TOP OF THE POST.

© 2014 BARRIER SYSTEMS INC. THE INFORMATION CONTAINED IN THIS DRAWING IS THE SOLE PROPERTY OF BARRIER SYSTEMS INC. ANY REPRODUCTION IN PART OR WHOLE WITHOUT THE WRITTEN PERMISSION OF BARRIER SYSTEMS INC. IS PROHIBITED.		UNLESS OTHERWISE SPECIFIED DIMENSIONS ARE IN INCHES. TOLERANCES ARE: FRACTIONS DECIMAL ANGLES $\pm 1/16$.XX = ± 0.03 $\pm 1/2^\circ$.XXX = ± 0.10	
APPROVALS DRAWN BY: AEM DRAWN DATE: 10/01/07 APPR'D BY: GAD APPR'D DATE: 10/01/07		INTERPRET DIMENSIONS AND TOLERANCES PER ASME Y14.5-1994 THIRD ANGLE PROJECTION DO NOT SCALE DRAWING	
REV	ECN#	DATE	
F	ECN 2643	3/19/15	
E	ECN 2067	05/03/13	
D	ECN 1806	01/27/12	
C	ECN 1546	8/16/10	
B	ECN 1344	05/04/09	
A	ECN 541	10/03/07	

LINDSAY
TRANSPORTATION SOLUTIONS

BARRIER SYSTEMS
180 River Road
Rio Vista, CA 94571
Tel: 888-800-3691
www.barriersystemsinc.com

TITLE: **X-TENSION MEDIAN GUARDRAIL TERMINAL SYSTEM, STEEL POST WITH COMPOSITE BLOCKOUTS, STD**

SIZE: **B** DWG NO.: **XTMTSS3** REV.: **F**

SCALE: 1:50 SHEET: 1 OF 1

4

3

2

1