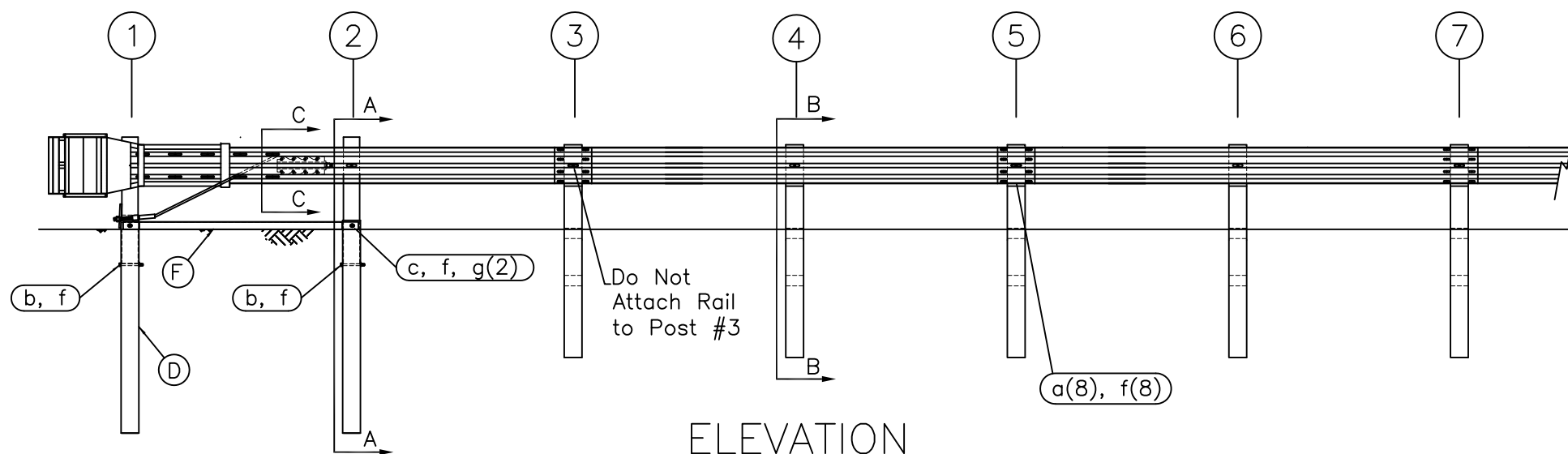
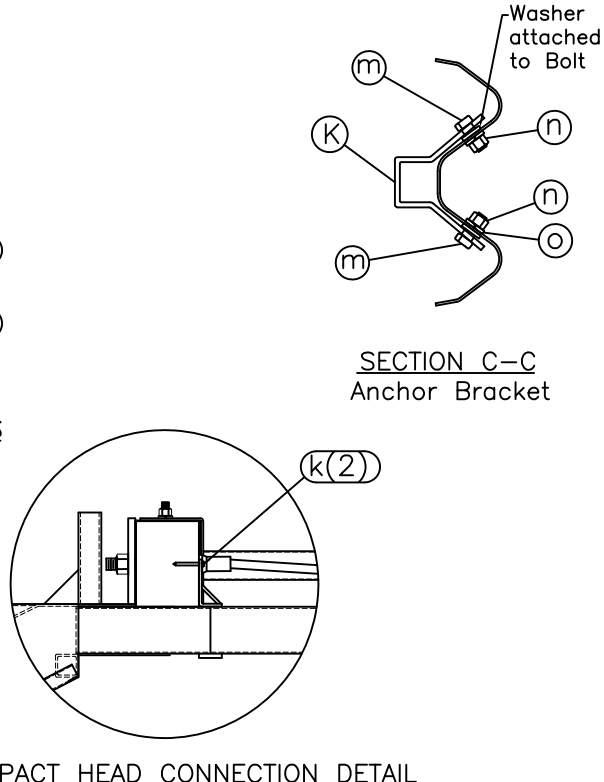
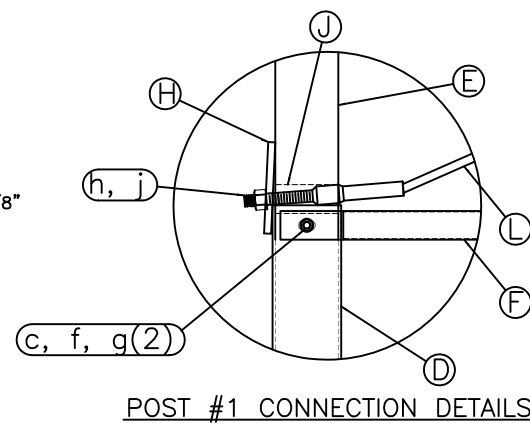
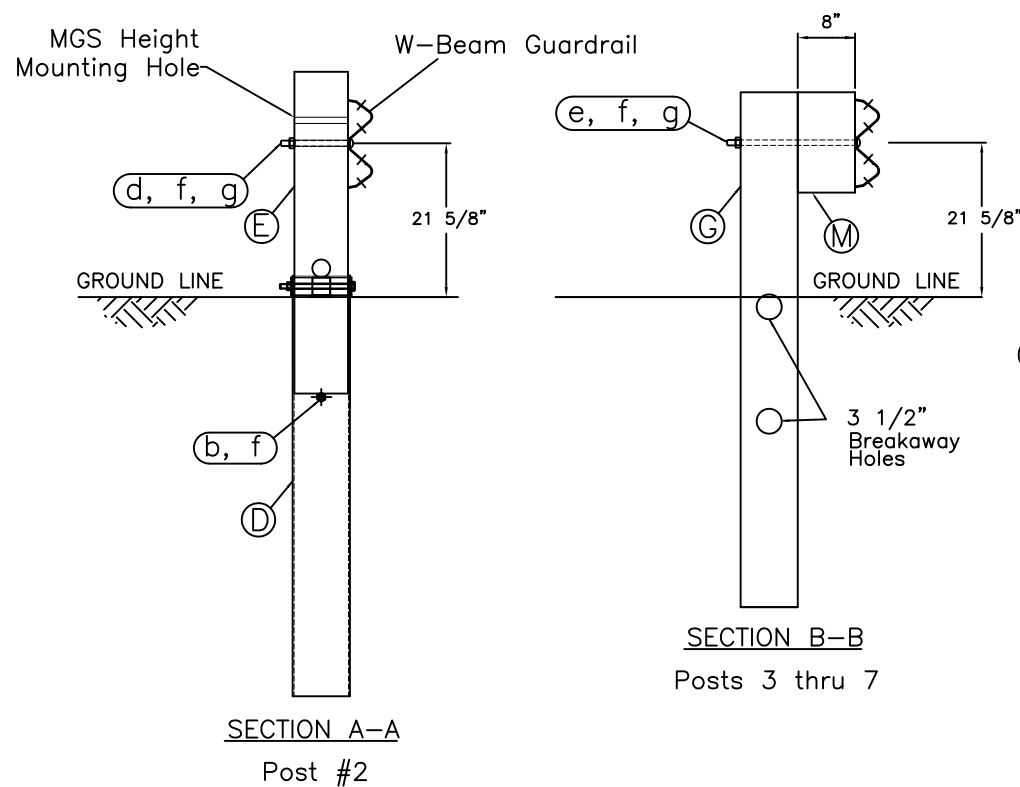


PLAN



ELEVATION



| ITEM | QTY | BILL OF MATERIALS | ITEM NO. |
|-------------------------------------|-----|----------------------------------|----------|
| A | 1 | IMPACT HEAD | F3000 |
| B | 1 | W-BEAM END SECTION, 12 Ga. | SF1303 |
| C | 2 | W-BEAM GUARDRAIL, 12 Ga. | G1203 |
| D | 2 | FOUNDATION TUBE 6'-0"* | S730 |
| E | 2 | UNIVERSAL BCT WOOD POST | UP650 |
| F | 1 | GROUND STRUT | E780 |
| G | 5 | UNIVERSAL CRT WOOD POST | UP671 |
| H | 1 | BEARING PLATE | E750 |
| J | 1 | PIPE SLEEVE | E740 |
| K | 1 | CABLE ANCHOR BOX | S760 |
| L | 1 | BCT CABLE ANCHOR ASSEMBLY | E770 |
| M | 5 | TIMBER BLOCKOUT OR RECYC. EQUIV. | P675 |
| HARDWARE (ALL DIMENSIONS IN INCHES) | | | |
| a | 16 | 5/8 ϕ x 1 1/4 SPLICE BOLT | B580122 |
| b | 2 | 5/8 ϕ x 7 1/2 HEX BOLT | B580754 |
| c | 2 | 5/8 ϕ x 9 1/2 HEX BOLT | B580954 |
| d | 1 | 5/8 ϕ x 10 H.G.R. BOLT | B581002 |
| e | 5 | 5/8 ϕ x 18 H.G.R. BOLT | B581802 |
| f | 26 | 5/8 ϕ H.G.R. NUT | N050 |
| g | 10 | H.G.R. WASHER | W050 |
| h | 2 | 1 ANCHOR CABLE HEX NUT | N100 |
| j | 2 | 1 ANCHOR CABLE WASHER | W100 |
| k | 2 | 3/8 x 3 LAG SCREW | E350 |
| m | 8 | 1/2 RSI SHOULDER BOLT W/WASHER | SB12A |
| n | 8 | 1/2 STRUCTURAL NUT | N012A |
| o | 8 | 1/2 STRUCTURAL WASHER | W012A |

PARTS NOTES:
 * 4'-6" Foundation Tubes (S735) w/Soil Plate (SP600) may be utilized in place of the 6'-0" Foundation Tubes at Posts #1 & #2.

- GENERAL NOTES:
1. Breakaway posts are required with the FLEAT.
 2. All bolts, nuts, cable assemblies, cable anchors and bearing plates shall be galvanized.
 3. The foundation tubes shall not protrude more than 4 in above the ground (measured along a 5' cord). Site grading may be necessary to meet this requirement.
 4. When rock is encountered, a 12" ϕ post hole, 20 in into the rock surface may be used if approved by the engineer. Granular material will be placed in the bottom of the hole, approximately 2.5" deep to provide drainage. The soil tubes can be field cut to length, placed in the hole and backfilled with adequately compacted material excavated from the hole.
 5. The breakaway cable assembly must be taut. A locking device (vice grips or channel lock pliers) should be used to prevent the cable from twisting when tightening nuts.
 6. The soil tubes may be driven with an approved driving head. They shall not be driven with the post in the tube.
 7. The wood blockouts should be "toe-nailed" to the rectangular wood posts to prevent them from turning when the wood shrinks. The bearing plate should be "toe-nailed" to post #1 to prevent rotation.

| | | | |
|---|---|-----------------------|--------------------------|
| Big Spring, TX Phone: 432-263-2435 or Phone: 330-346-0721 | FLEAT Terminal Universal Wood Posts | | Sheet: 1 |
| | Drawing Name: FLT-W | Scale: NONE | Date: 05/08/13 |
| | | By: JRR | Rev: |