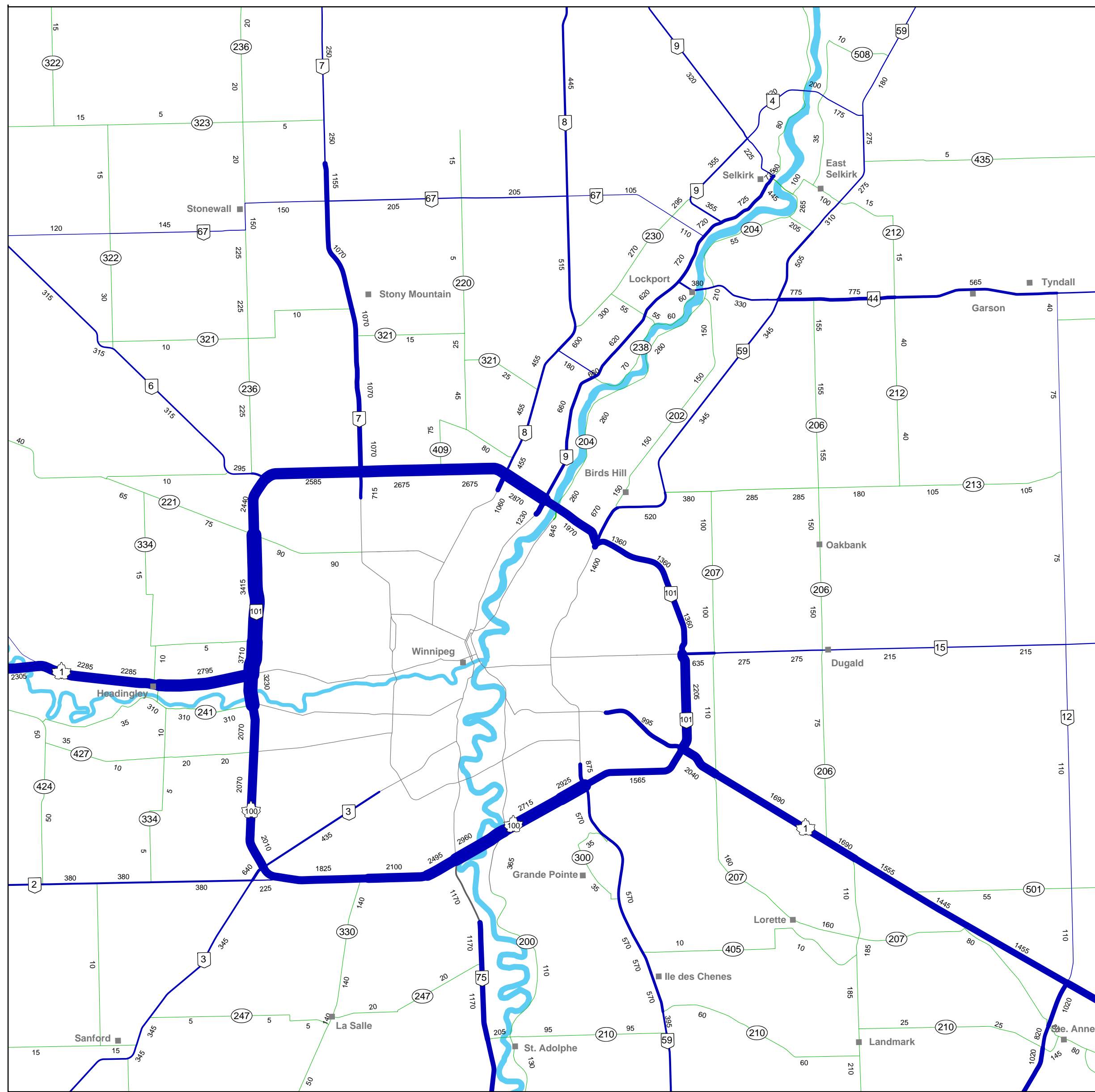
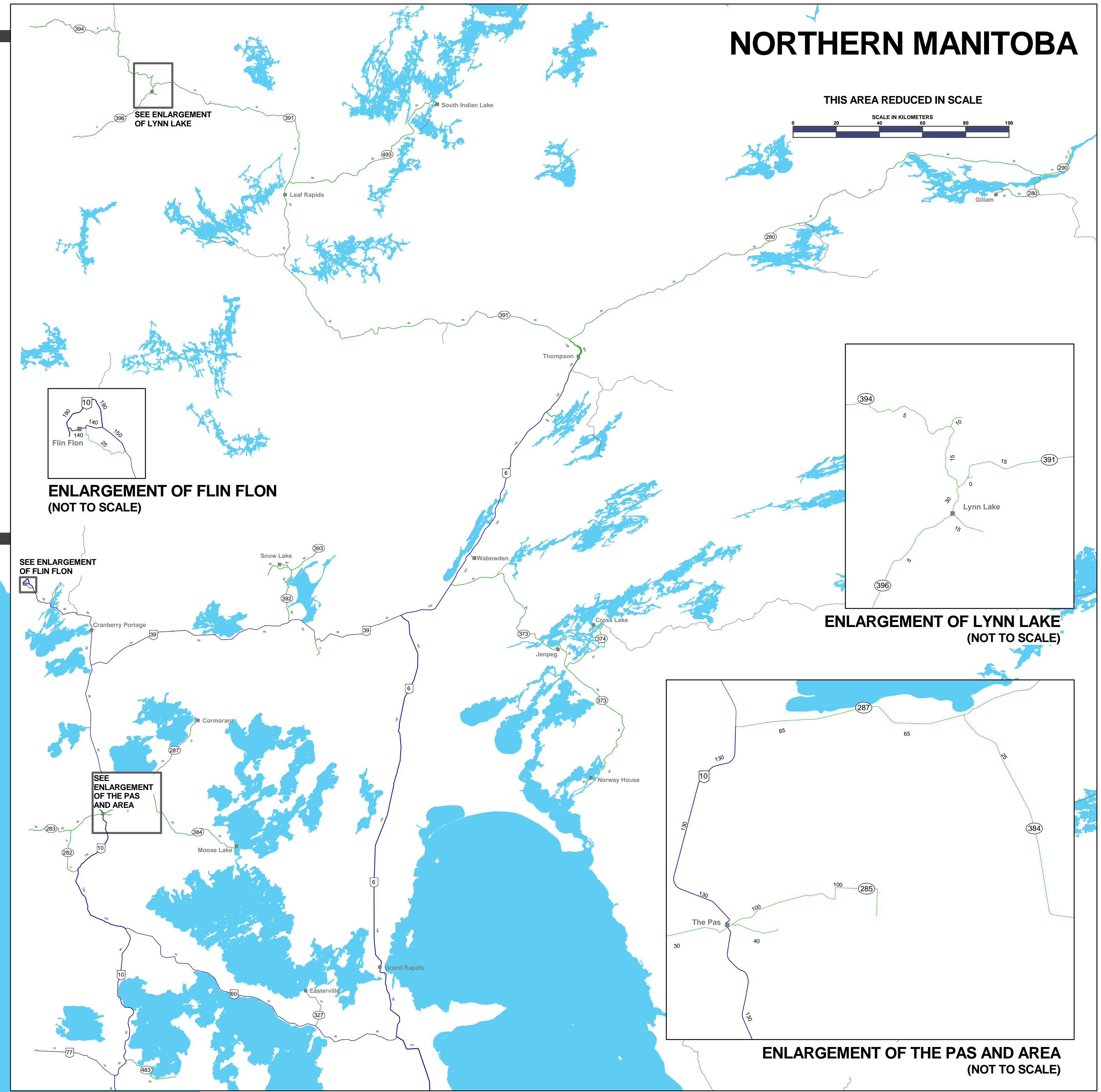
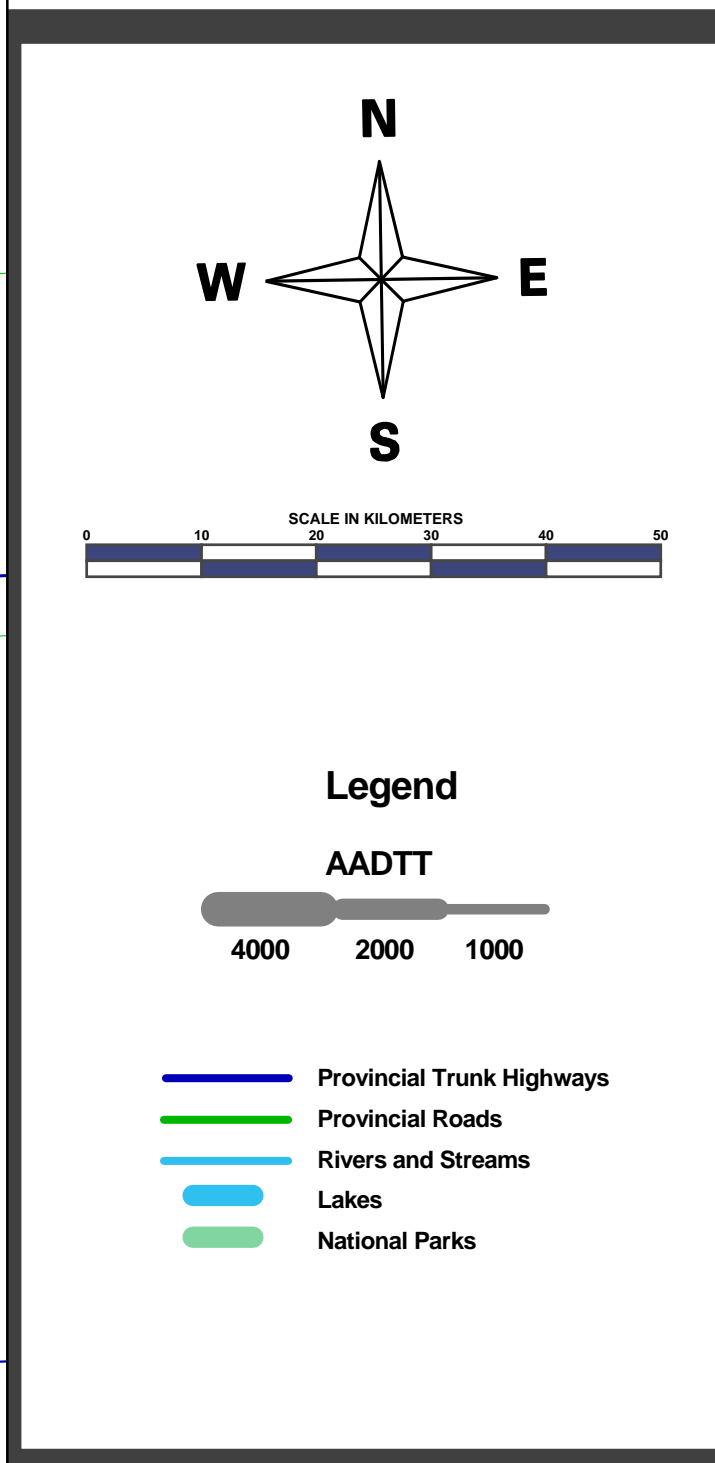


# 2013 Truck Traffic Flow Map



ENLARGEMENT OF WINNIPEG AND AREA  
(NOT TO SCALE)

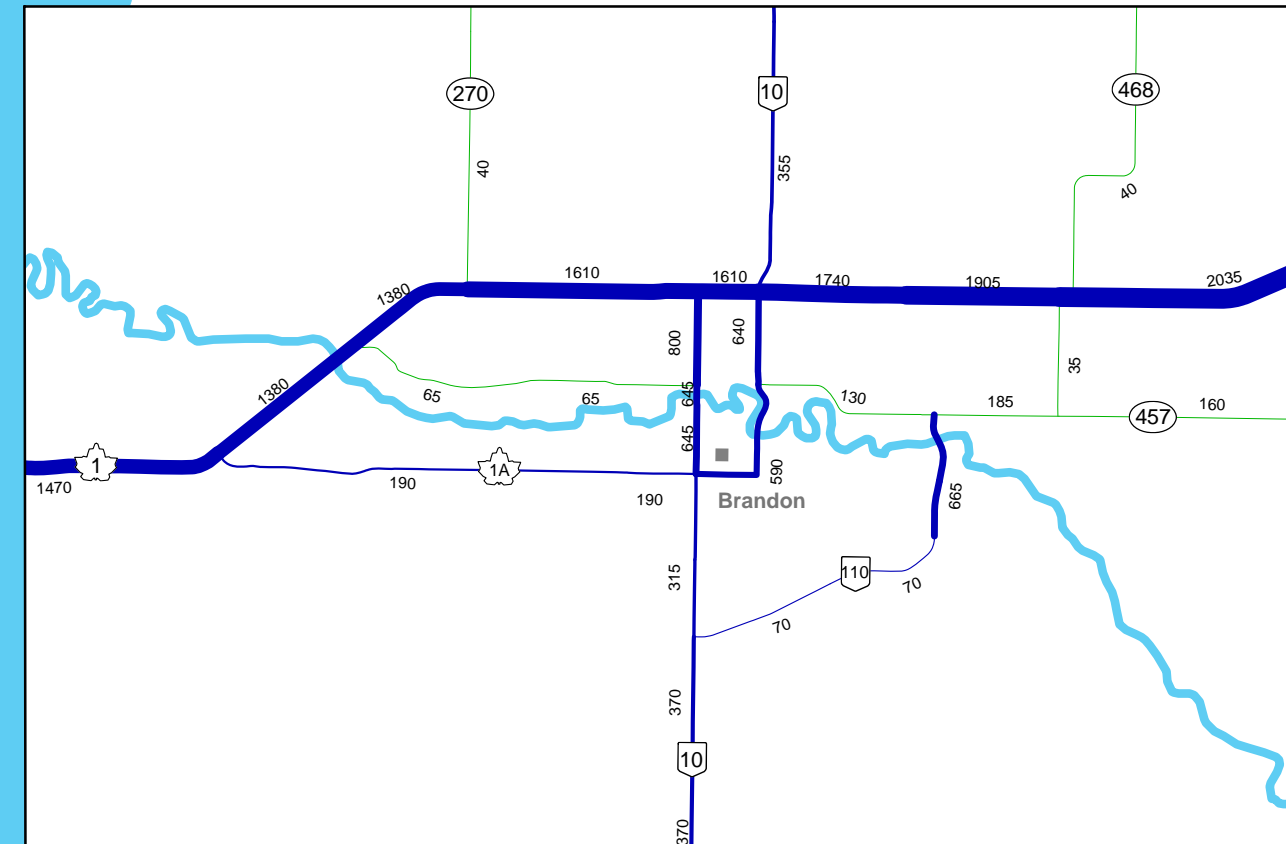
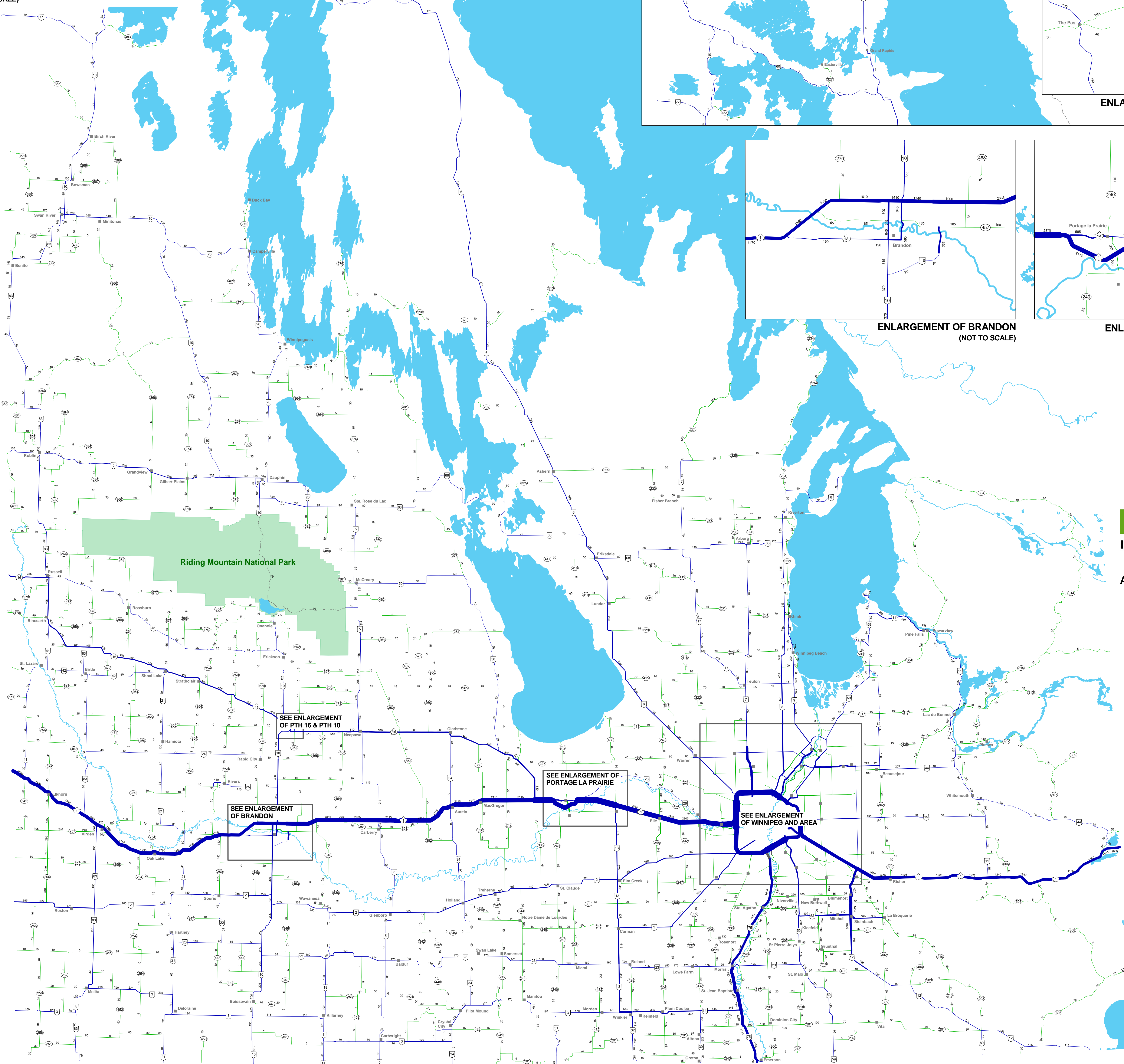


## NORTHERN MANITOBA

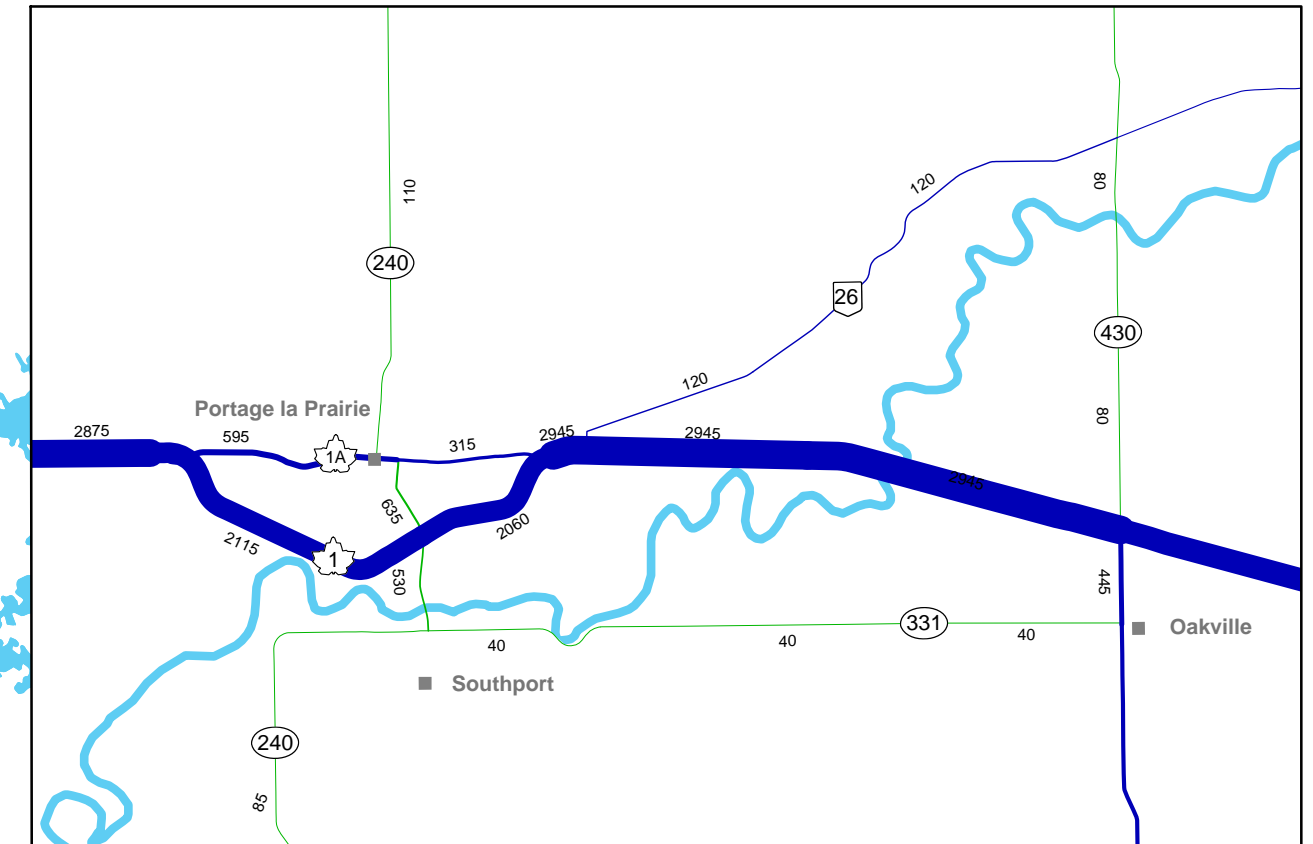
THIS AREA REDUCED IN SCALE

ENLARGEMENT OF LYNN LAKE  
(NOT TO SCALE)

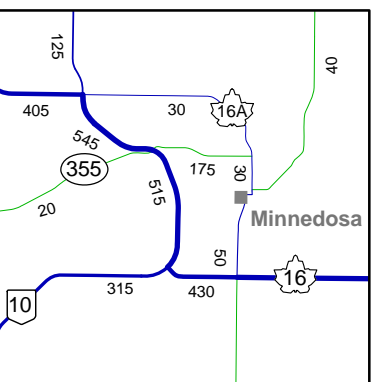
ENLARGEMENT OF THE PAS AND AREA  
(NOT TO SCALE)



ENLARGEMENT OF BRANDON  
(NOT TO SCALE)



ENLARGEMENT OF PORTAGE LA PRAIRIE  
(NOT TO SCALE)



ENLARGEMENT OF PTH 16 & PTH 10  
(NOT TO SCALE)

**Manitoba** Infrastructure

Traffic Engineering Branch

Annual Average Daily Truck Traffic on

Provincial Trunk Highways

and Provincial Roads

NOTE: Numbers on the map denote the combined Annual Average Daily Truck Traffic (AADTT) on each highway section. All traffic estimates are derived from the most recent vehicle counts, which may have been taken from 2007 through 2013 inclusive.

AADTT is defined as the number of trucks passing a given point on an average day of the year, as estimated using data collected over an entire year.

Please note that the additional geographical features on this map, such as rivers, lakes and parks, are not meant to be exhaustive, and are provided for use as points of reference only. Additionally, due to map scale some AADTT values are not shown around towns. Consult the webmap at <http://mhtis.mb.ca> for AADTT information at these locations.

OFFICIAL COPY  
Printed under the authority of the  
Manitoba Highway Traffic Information System (MHTIS)

© 2017 MHTIS  
Department of Civil Engineering  
University of Manitoba

Giuseppe Grande, B.Sc. (CE), EIT  
MHTIS Manager

Jonathan Regehr, PhD, P.Eng.  
MHTIS Director