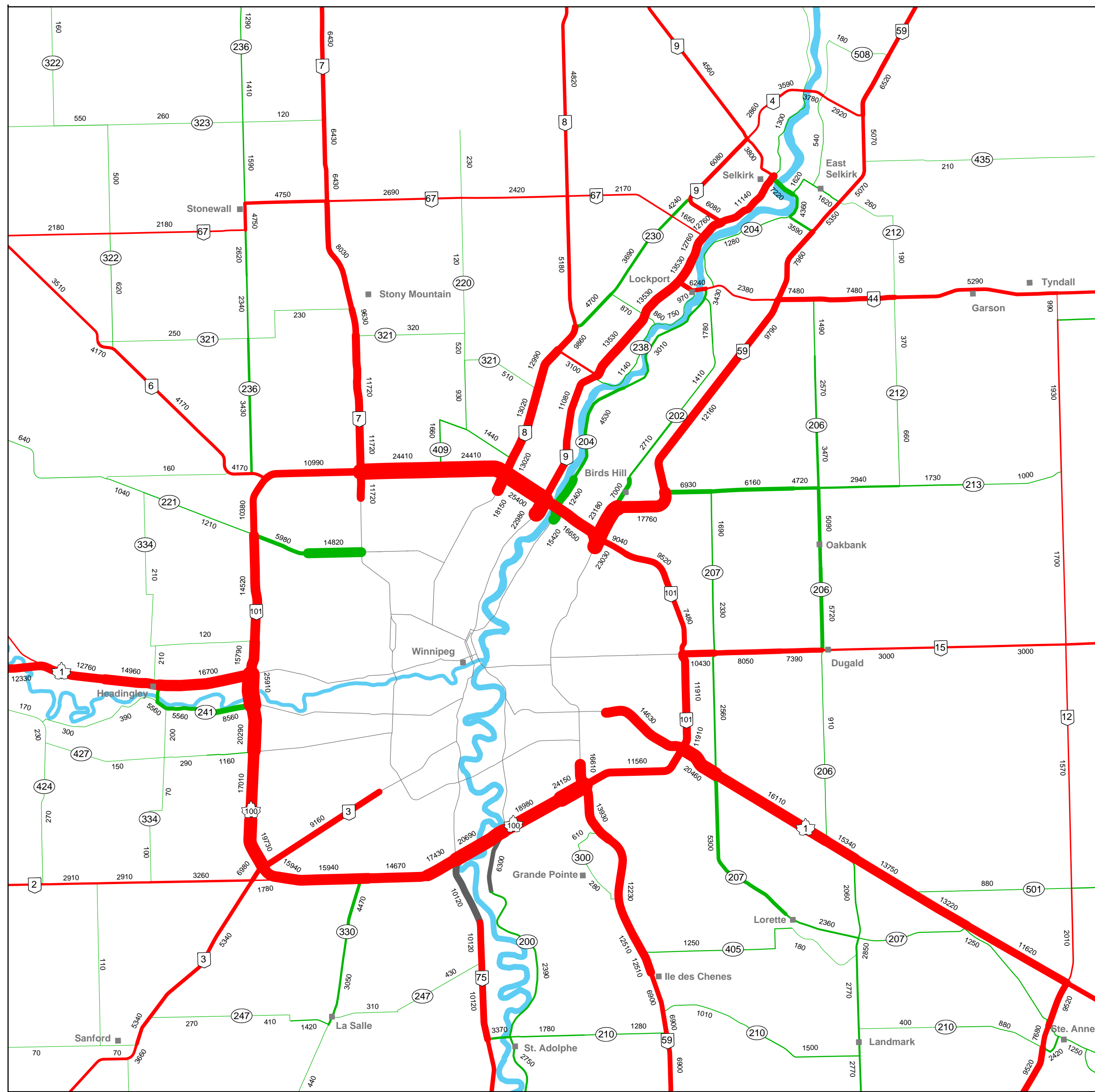
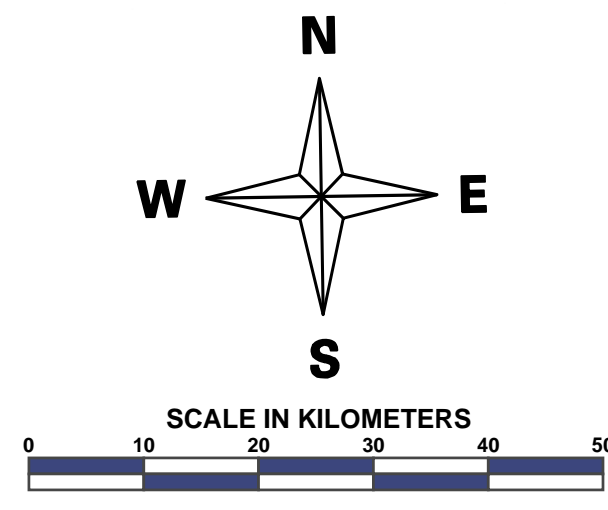


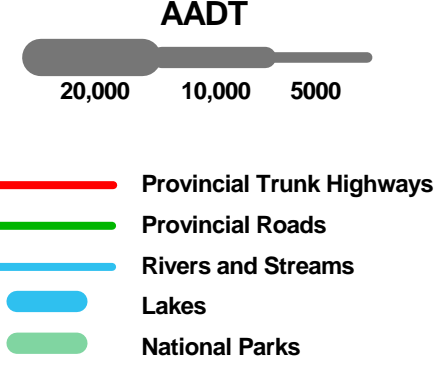
# 2015 Traffic Flow Map



ENLARGEMENT OF WINNIPEG AND AREA  
(NOT TO SCALE)



**Legend**



AADT

20,000 10,000 5,000

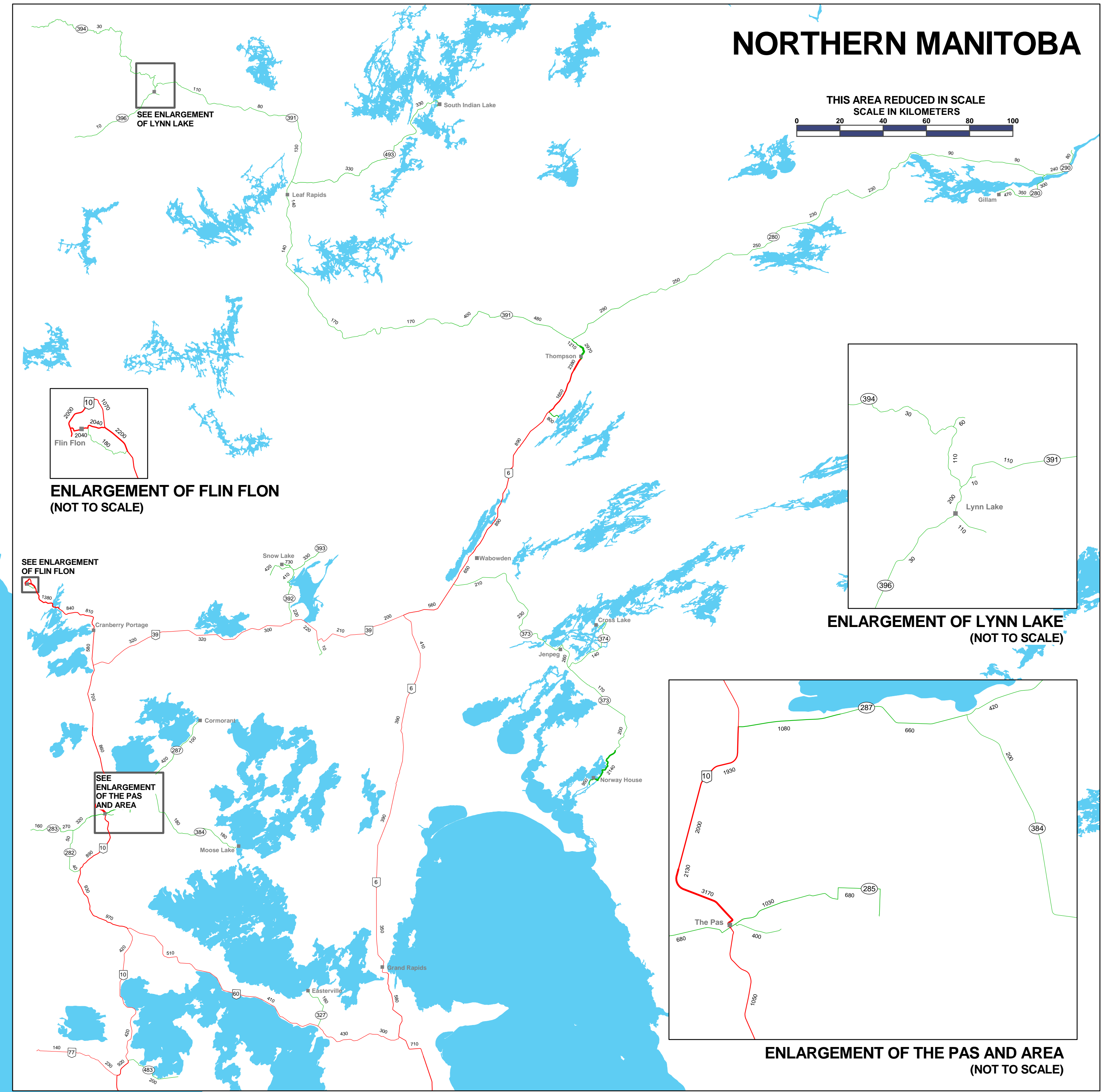
Provincial Trunk Highways

Provincial Roads

Rivers and Streams

Lakes

National Parks



## NORTHERN MANITOBA

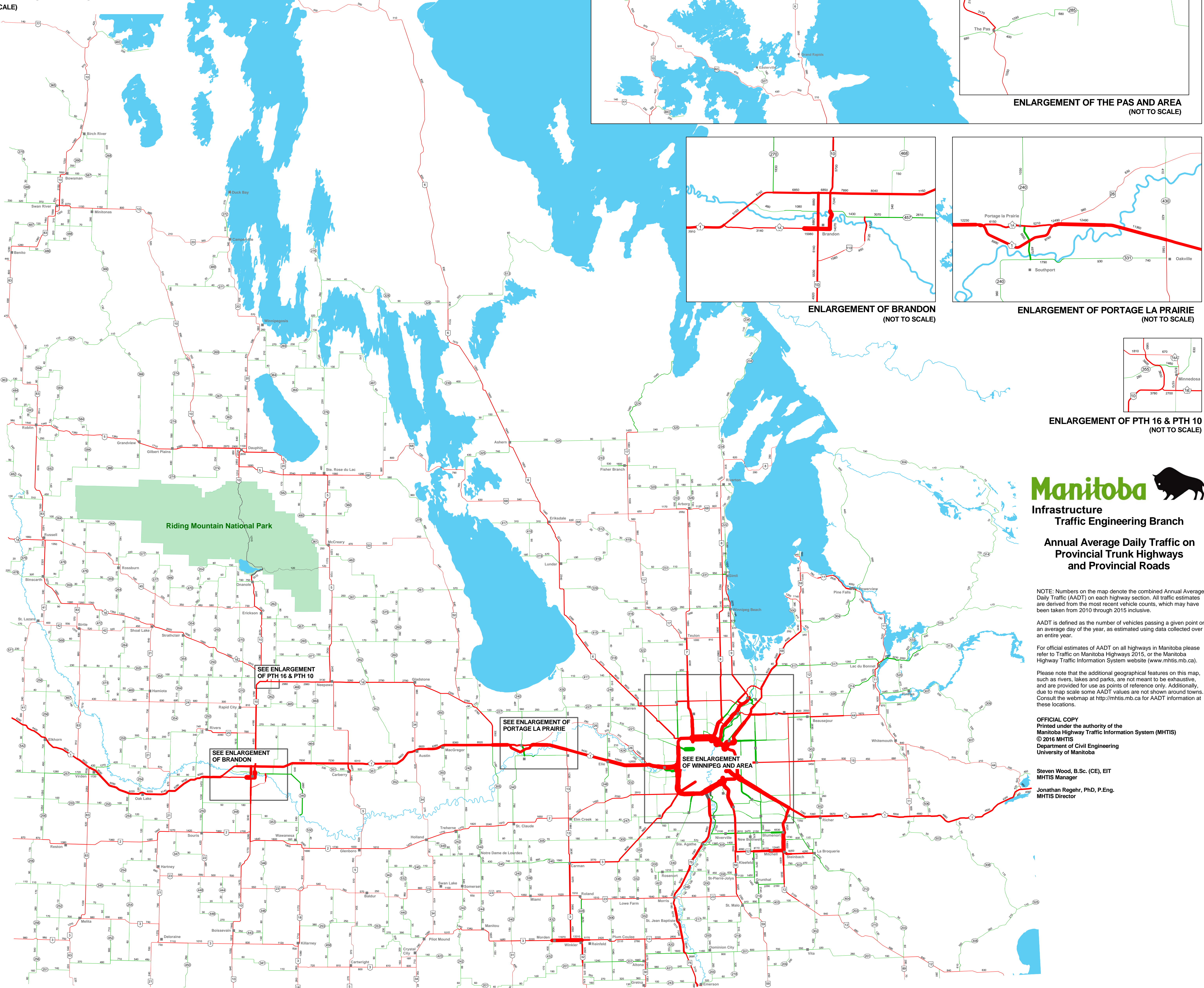
THIS AREA REDUCED IN SCALE  
SCALE IN KILOMETERS



ENLARGEMENT OF FLIN FLON  
(NOT TO SCALE)

ENLARGEMENT OF LYNN LAKE  
(NOT TO SCALE)

ENLARGEMENT OF THE PAS AND AREA  
(NOT TO SCALE)



ENLARGEMENT OF BRANDON  
(NOT TO SCALE)

ENLARGEMENT OF PORTAGE LA PRAIRIE  
(NOT TO SCALE)

ENLARGEMENT OF PTH 16 & PTH 10  
(NOT TO SCALE)

Riding Mountain National Park

SEE ENLARGEMENT  
OF PTH 16 & PTH 10

SEE ENLARGEMENT  
OF BRANDON

SEE ENLARGEMENT  
OF PORTAGE LA PRAIRIE

SEE ENLARGEMENT  
OF WINNIPEG AND AREA

**Manitoba**  
Infrastructure  
Traffic Engineering Branch

Annual Average Daily Traffic on  
Provincial Trunk Highways  
and Provincial Roads

NOTE: Numbers on the map denote the combined Annual Average Daily Traffic (AADT) on each highway section. All traffic estimates are derived from the most recent vehicle counts, which may have been taken from 2010 through 2015 inclusive.

AADT is defined as the number of vehicles passing a given point on an average day of the year, as estimated using data collected over an entire year.

For official estimates of AADT on all highways in Manitoba please refer to Traffic on Manitoba Highways 2015, or the Manitoba Highway Traffic Information System website ([www.mhtis.mb.ca](http://www.mhtis.mb.ca)).

Please note that the additional geographical features on this map, such as rivers, lakes and parks, are not meant to be exhaustive, and are provided for use as points of reference only. Additionally, due to map scale some AADT values are not shown around towns. Consult the webmap at <http://mhtis.mb.ca> for AADT information at these locations.

OFFICIAL COPY  
Printed under the authority of the  
Manitoba Highway Traffic Information System (MHTIS)  
© 2016 MHTIS  
Department of Civil Engineering  
University of Manitoba

Steven Wood, B.Sc. (CE), EIT  
MHTIS Manager  
Jonathan Regehr, Ph.D., P.Eng.  
MHTIS Director