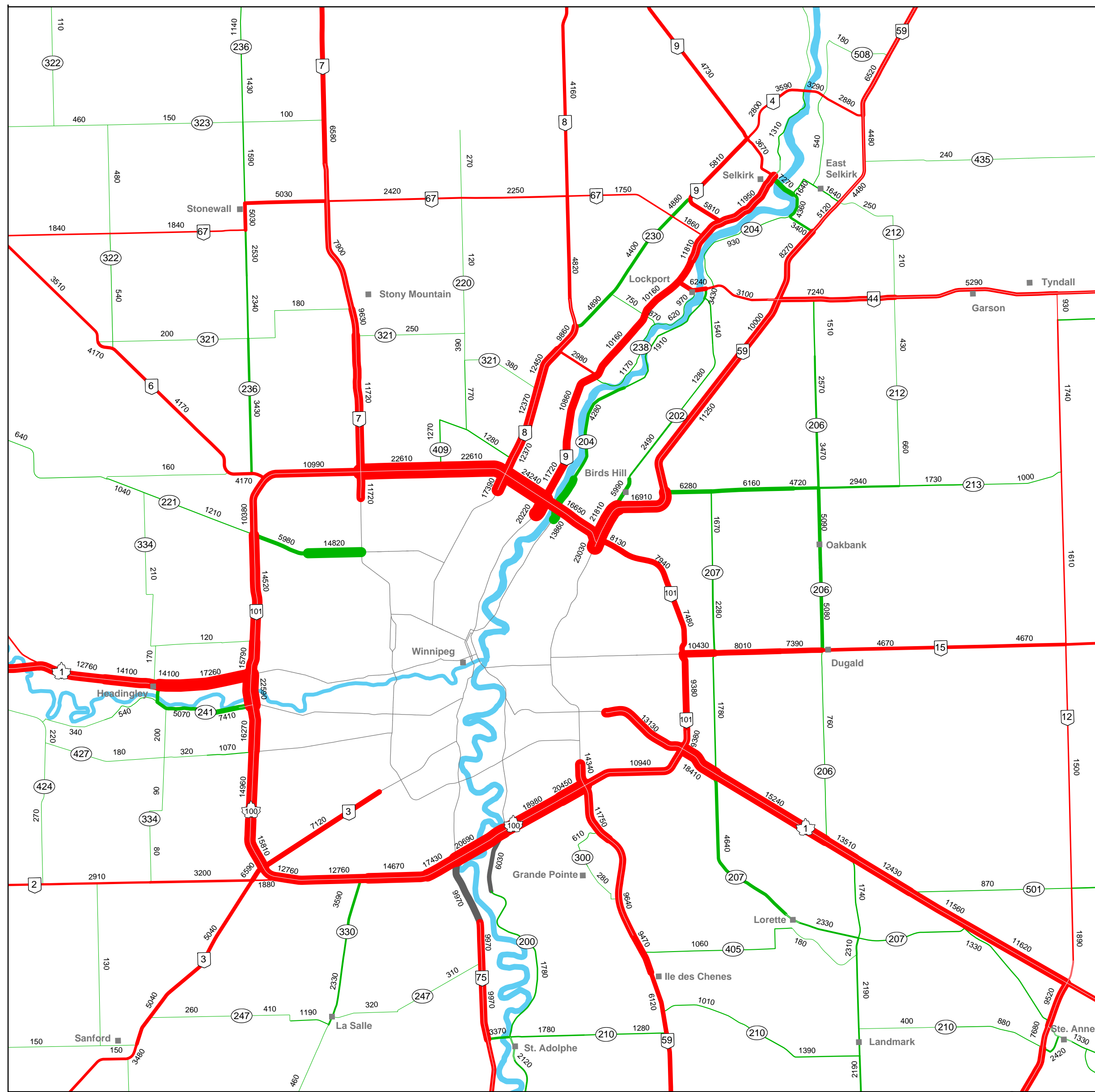
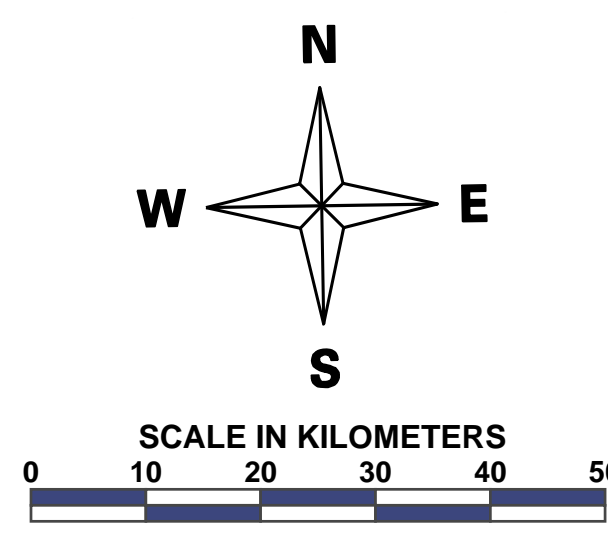


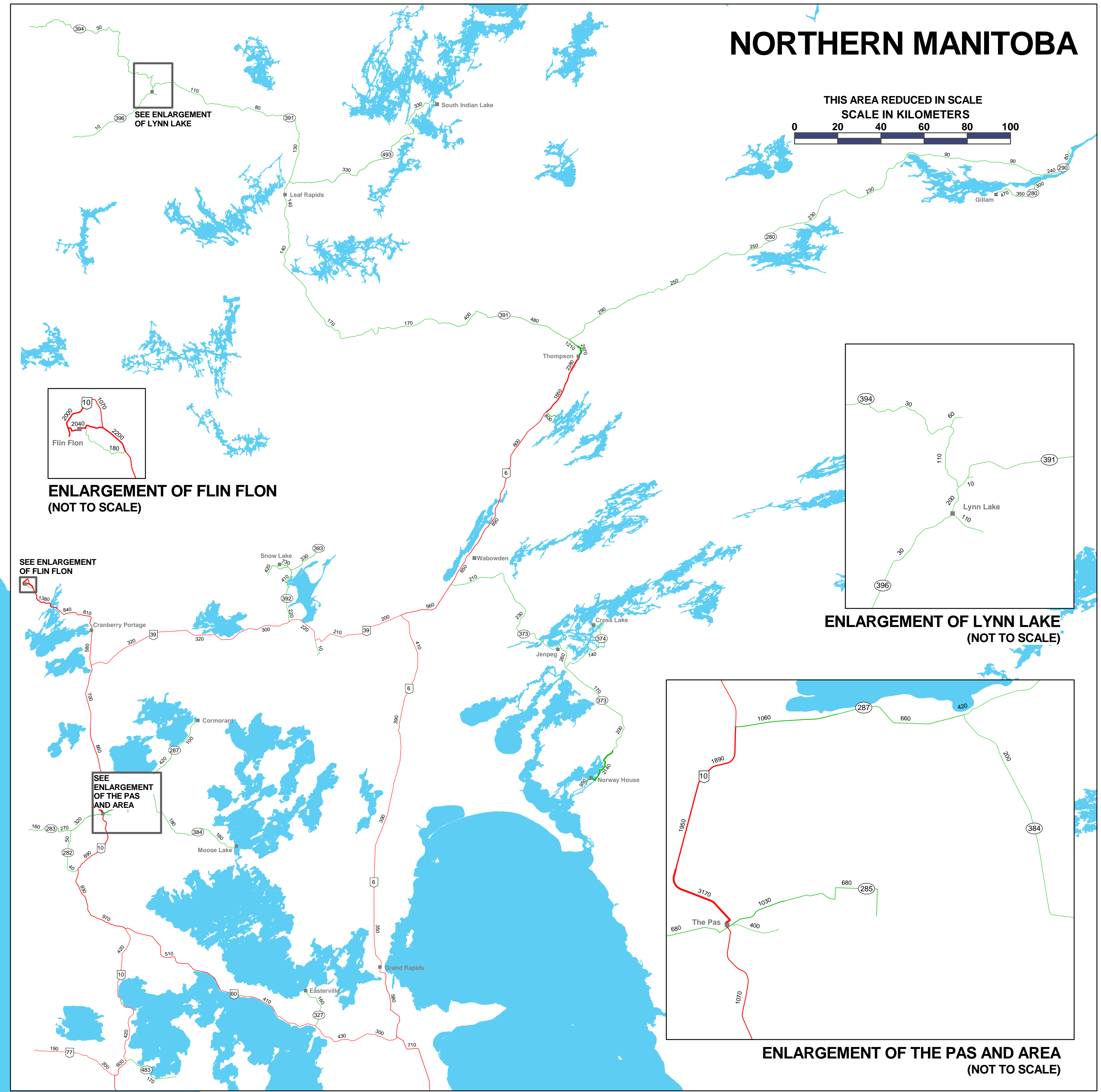
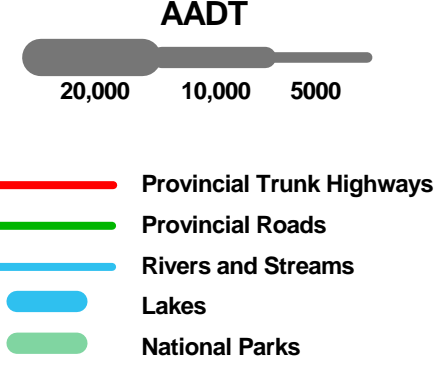
# 2013 Traffic Flow Map



ENLARGEMENT OF WINNIPEG AND AREA (NOT TO SCALE)



**Legend**



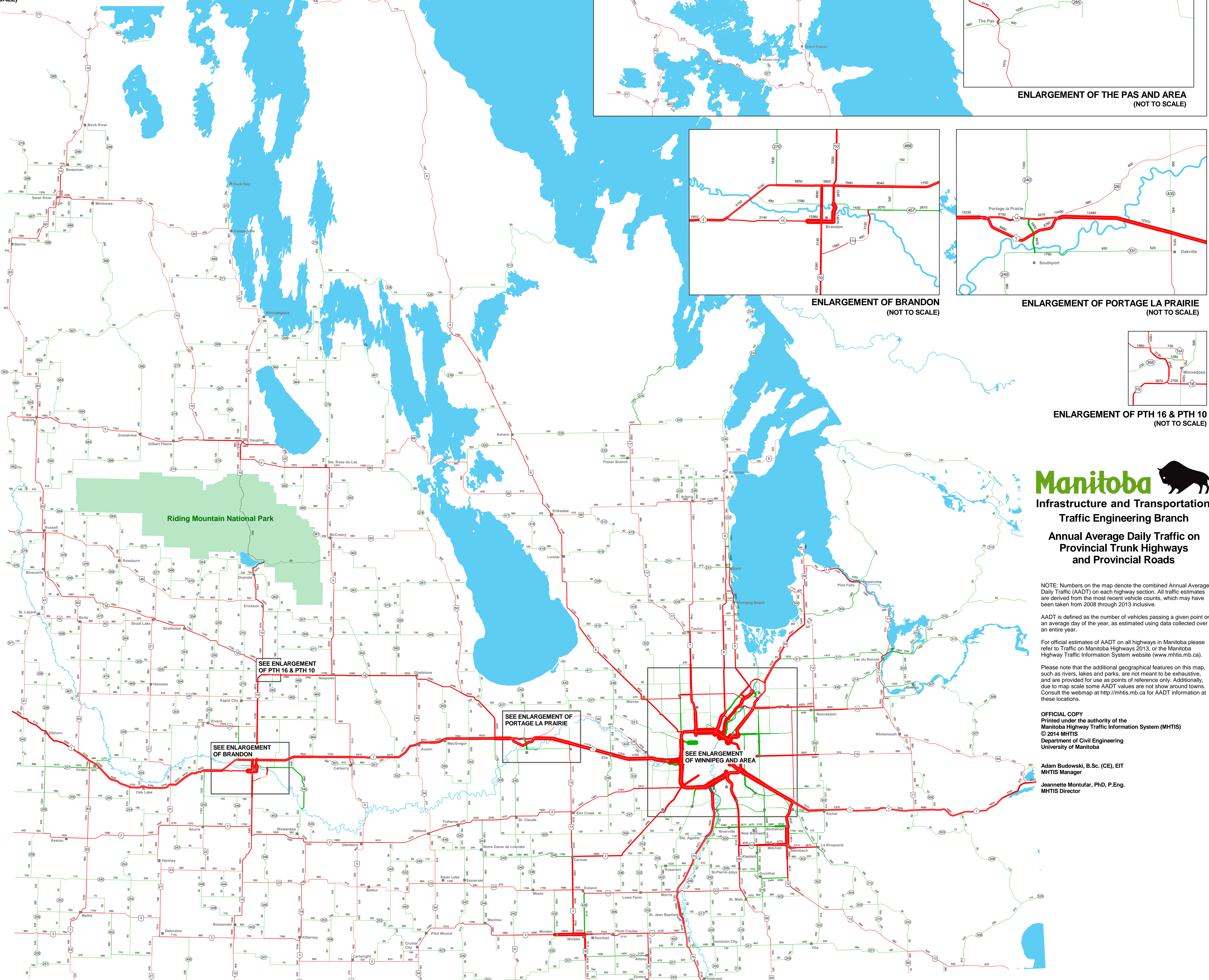
**NORTHERN MANITOBA**

THIS AREA REDUCED IN SCALE  
SCALE IN KILOMETERS  
0 20 40 60 80 100

ENLARGEMENT OF FLIN FLON (NOT TO SCALE)

ENLARGEMENT OF LYNN LAKE (NOT TO SCALE)

ENLARGEMENT OF THE PAS AND AREA (NOT TO SCALE)



Riding Mountain National Park

SEE ENLARGEMENT OF PTH 16 & PTH 10

SEE ENLARGEMENT OF BRANDON

SEE ENLARGEMENT OF PORTAGE LA PRAIRIE

SEE ENLARGEMENT OF WINNIPEG AND AREA

ENLARGEMENT OF BRANDON (NOT TO SCALE)

ENLARGEMENT OF PORTAGE LA PRAIRIE (NOT TO SCALE)

ENLARGEMENT OF PTH 16 & PTH 10 (NOT TO SCALE)

**Manitoba**  
Infrastructure and Transportation  
Traffic Engineering Branch

Annual Average Daily Traffic on  
Provincial Trunk Highways  
and Provincial Roads

NOTE: Numbers on the map denote the combined Annual Average Daily Traffic (AADT) on each highway section. All traffic estimates are derived from the most recent vehicle counts, which may have been taken from 2008 through 2013 inclusive.

AADT is defined as the number of vehicles passing a given point on an average day of the year, as estimated using data collected over an entire year.

For official estimates of AADT on all highways in Manitoba please refer to Traffic on Manitoba Highways 2013, or the Manitoba Highway Traffic Information System website ([www.mhtis.mb.ca](http://www.mhtis.mb.ca)).

Please note that the additional geographical features on this map, such as rivers, lakes and parks, are not meant to be exhaustive, and are provided for use as points of reference only. Additionally, due to map scale some AADT values are not shown around towns. Consult the webmap at <http://mhtis.mb.ca> for AADT information at these locations.

OFFICIAL COPY  
Printed under the authority of the  
Manitoba Highway Traffic Information System (MHTIS)  
© 2014 MHTIS  
Department of Civil Engineering  
University of Manitoba

Adam Budowski, B.Sc. (CE), EIT  
MHTIS Manager  
Jannette Montfar, Ph.D., P.Eng.  
MHTIS Director