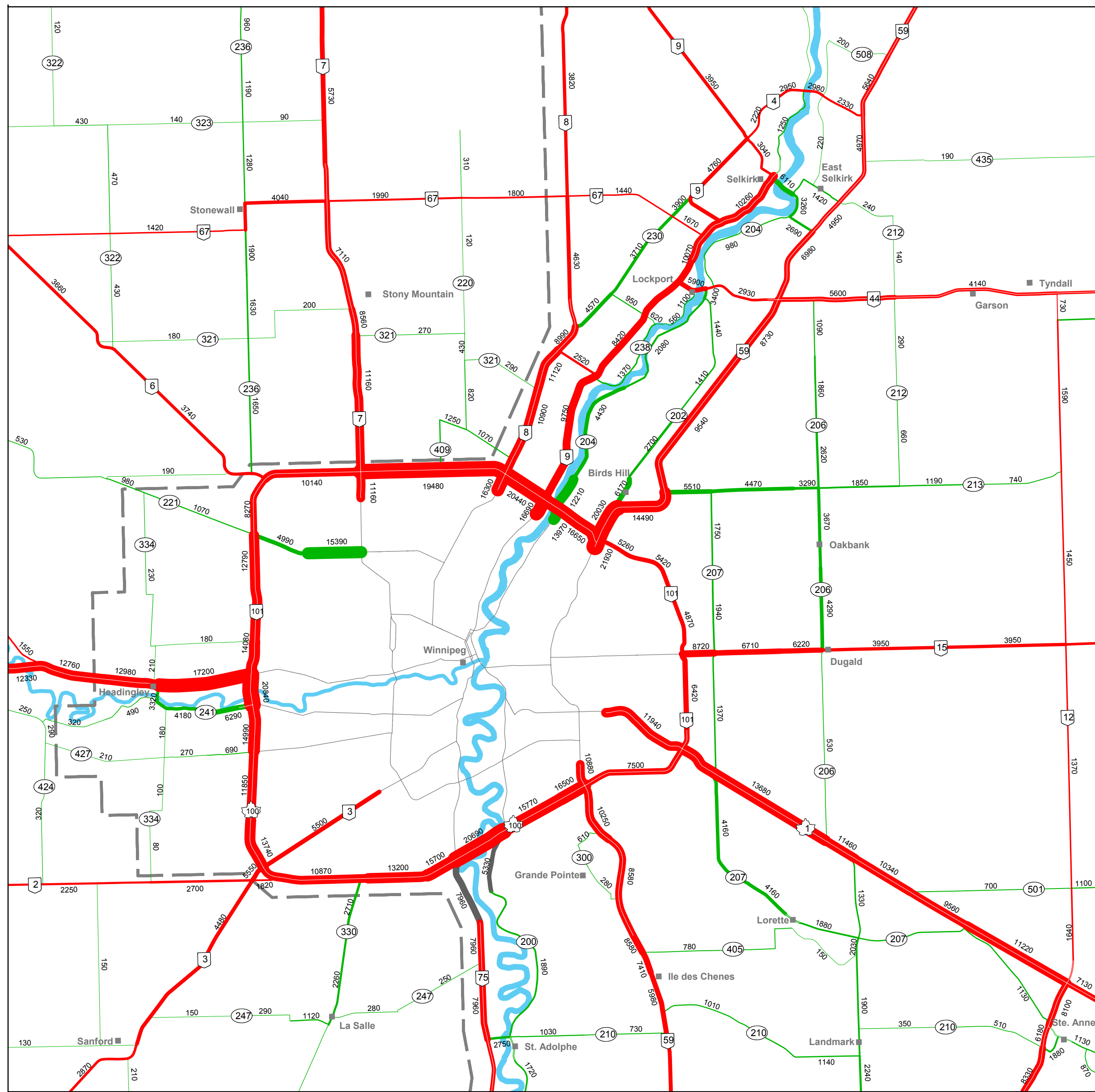
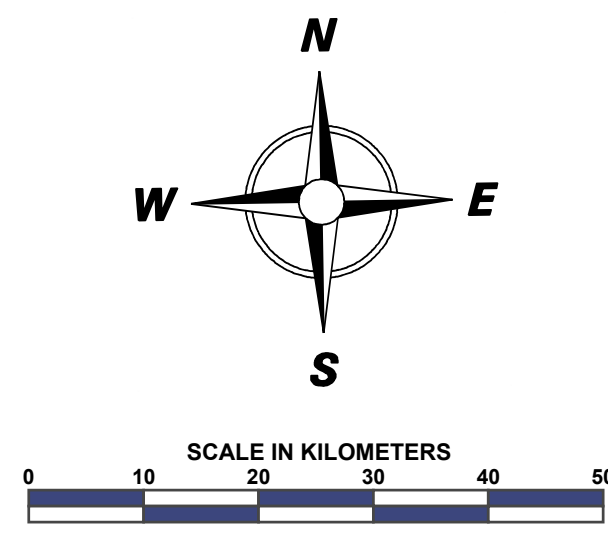


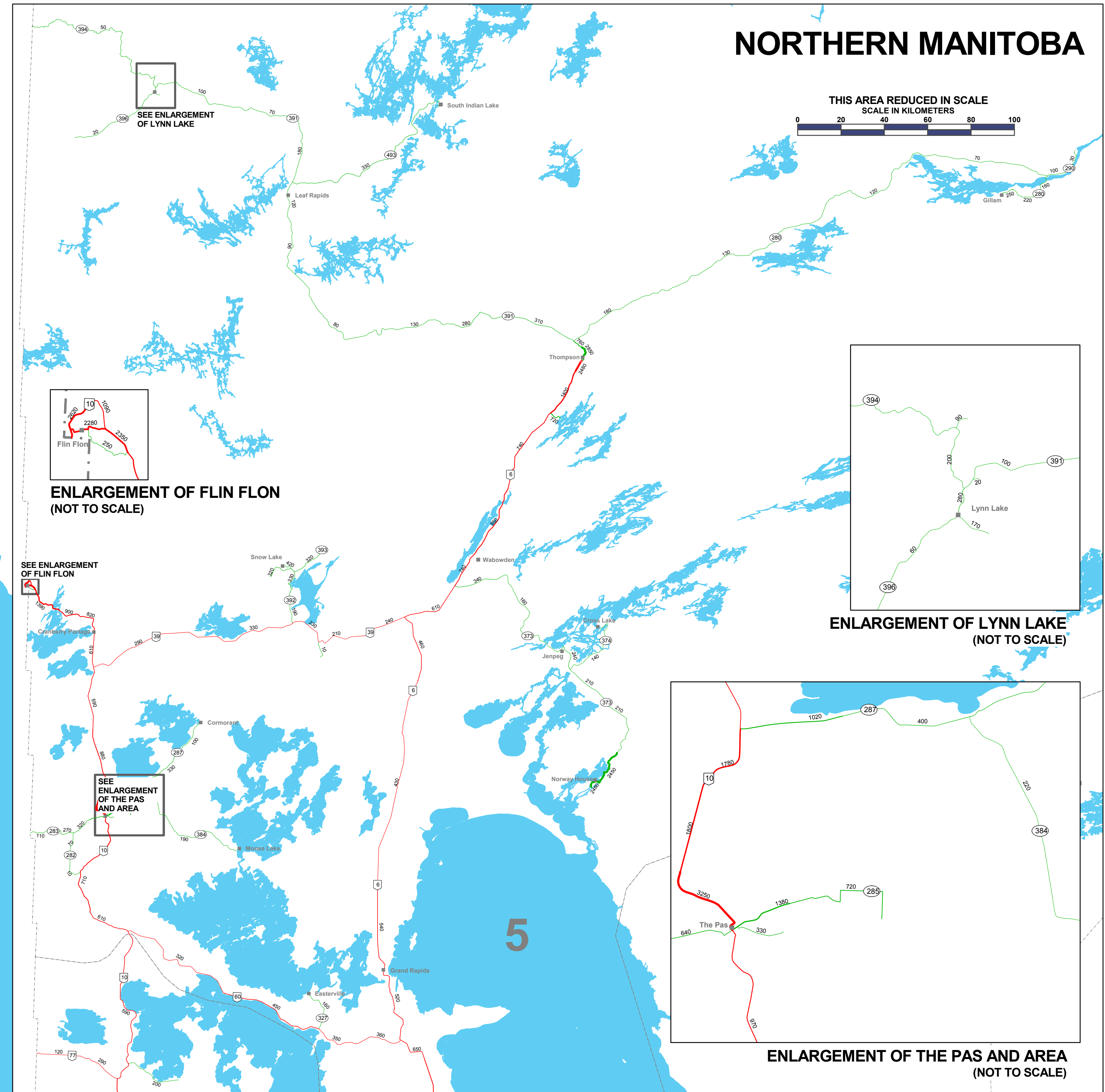
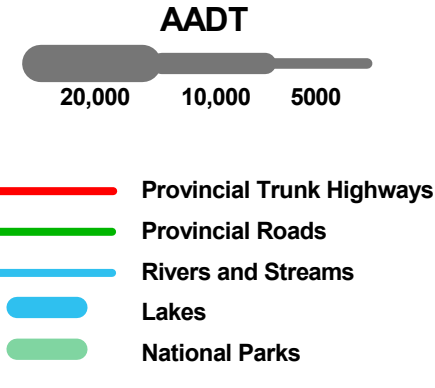
2006 Traffic Flow Map



ENLARGEMENT OF WINNIPEG AND AREA (NOT TO SCALE)



Legend



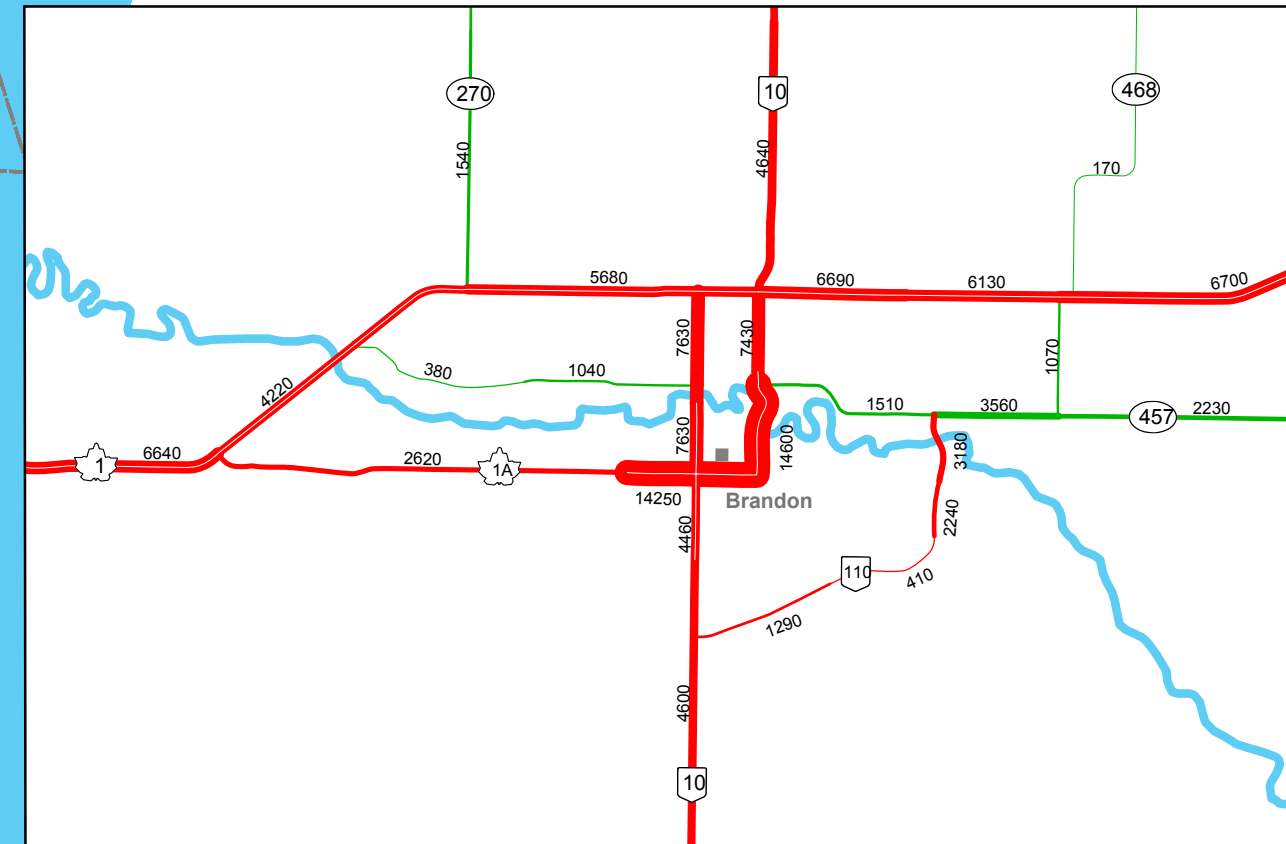
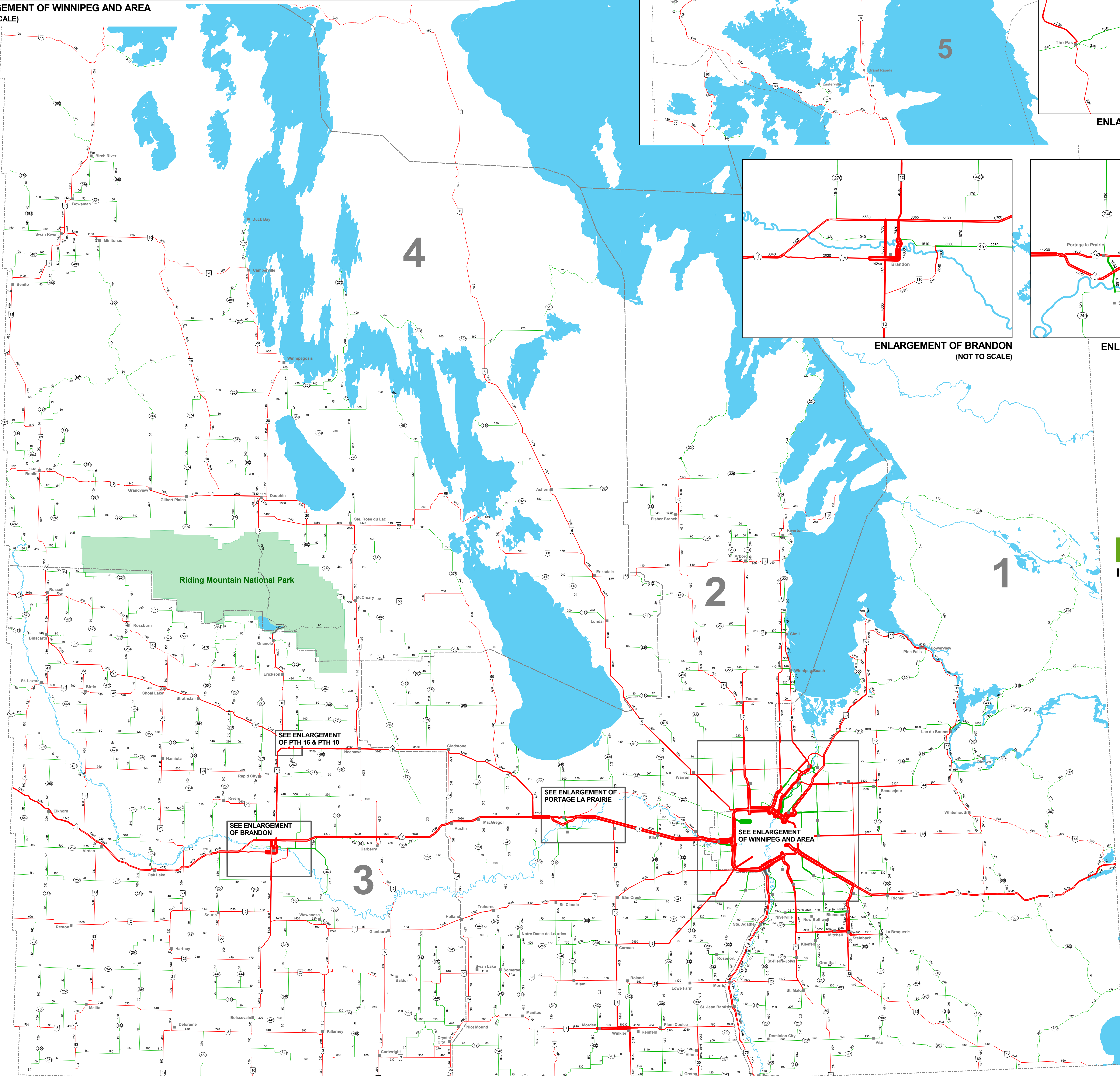
NORTHERN MANITOBA

THIS AREA REDUCED IN SCALE
SCALE IN KILOMETERS

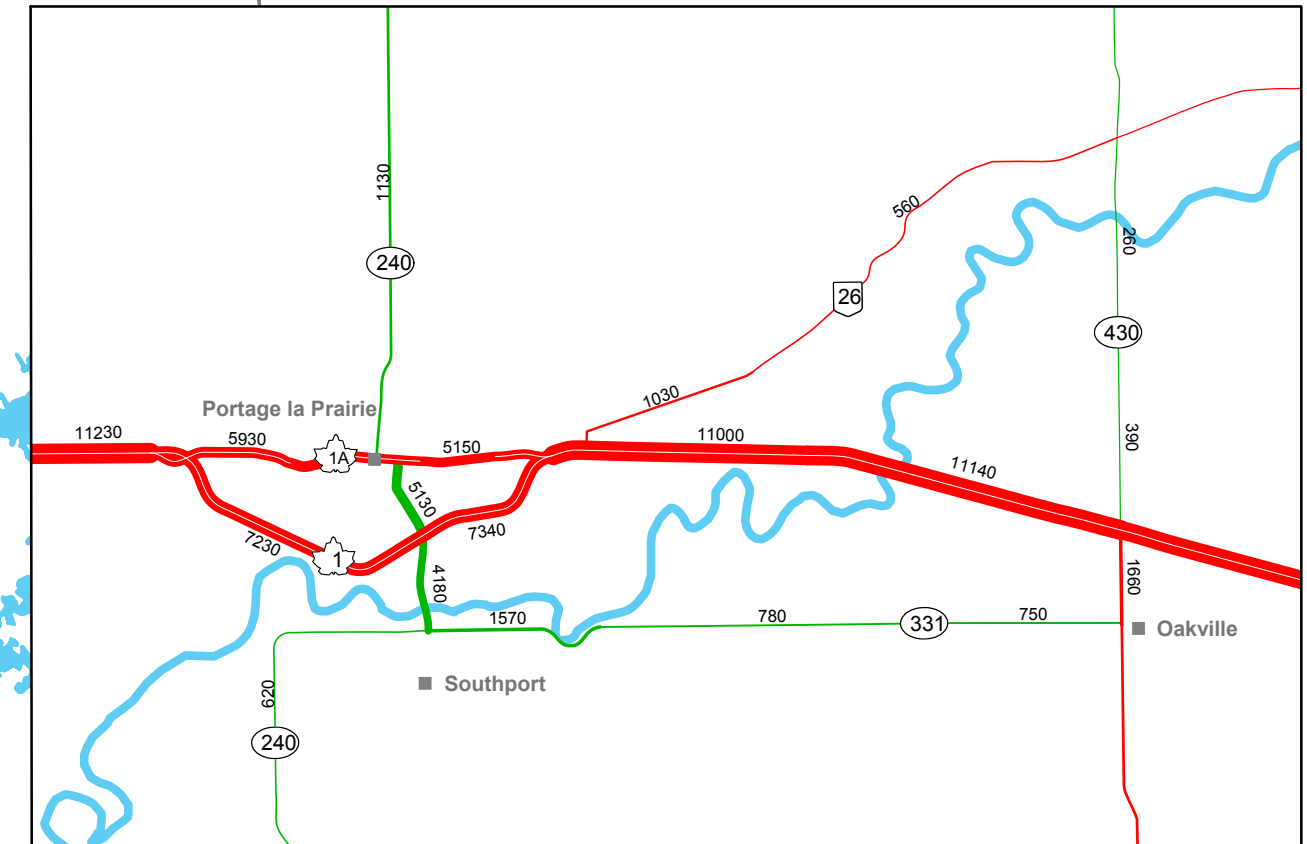
ENLARGEMENT OF FLIN FLON (NOT TO SCALE)

ENLARGEMENT OF LYNN LAKE (NOT TO SCALE)

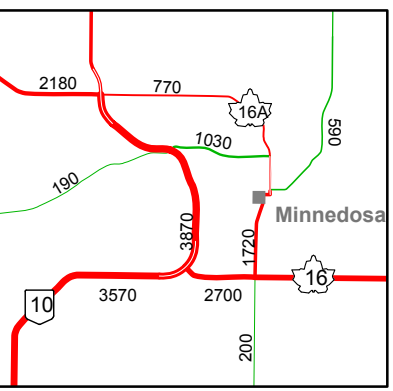
ENLARGEMENT OF THE PAS AND AREA (NOT TO SCALE)



ENLARGEMENT OF BRANDON (NOT TO SCALE)



ENLARGEMENT OF PORTAGE LA PRAIRIE (NOT TO SCALE)



ENLARGEMENT OF PTH 16 & PTH 10 (NOT TO SCALE)

SEE ENLARGEMENT OF PTH 16 & PTH 10

SEE ENLARGEMENT OF BRANDON

SEE ENLARGEMENT OF PORTAGE LA PRAIRIE

SEE ENLARGEMENT OF WINNIPEG AND AREA

Manitoba Infrastructure and Transportation
Traffic Engineering Branch
Annual Average Daily Traffic on
Provincial Trunk Highways
and Provincial Roads

NOTE: Numbers on the map denote the combined Annual Average Daily Traffic (AADT) on each highway section. All traffic estimates are derived from the most recent vehicle counts, which may have been taken from 2002 through 2006 inclusive.

AADT is defined as the number of vehicles passing a given point on an average day of the year, as estimated using data collected over an entire year.

For official estimates of AADT on all highways in Manitoba please refer to Traffic on Manitoba Highways 2006, or the Manitoba Highway Traffic Information System website (www.mhtis.mb.ca).

Please note that the additional geographical features on this map, such as rivers, lakes and parks, are not meant to be exhaustive, and are provided for use as points of reference only.

This copy approved for electronic viewing only.
© 2007 UMTIG/MHTIS
Björn Rásdóttir, EIT
MHTIS Manager