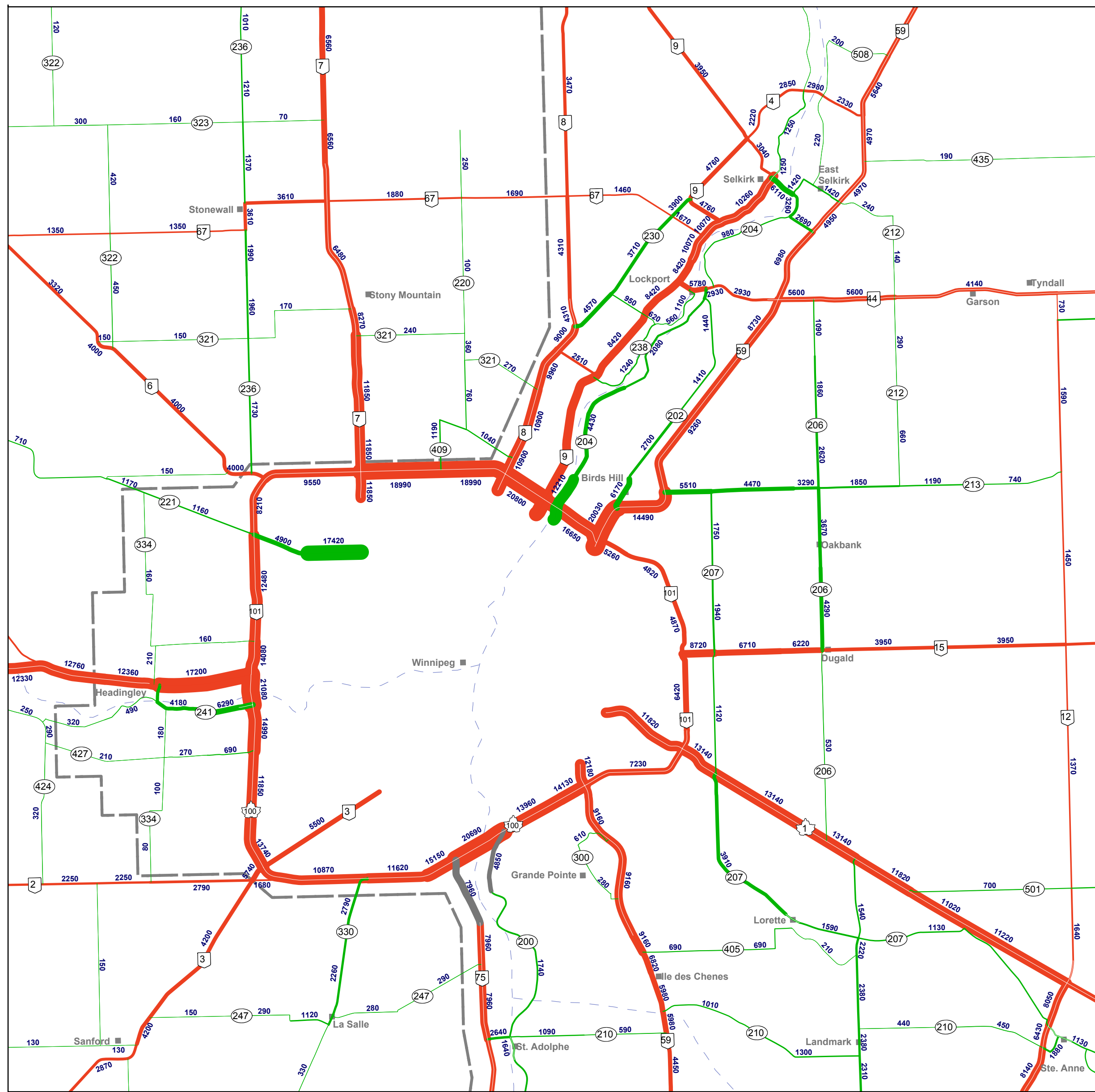
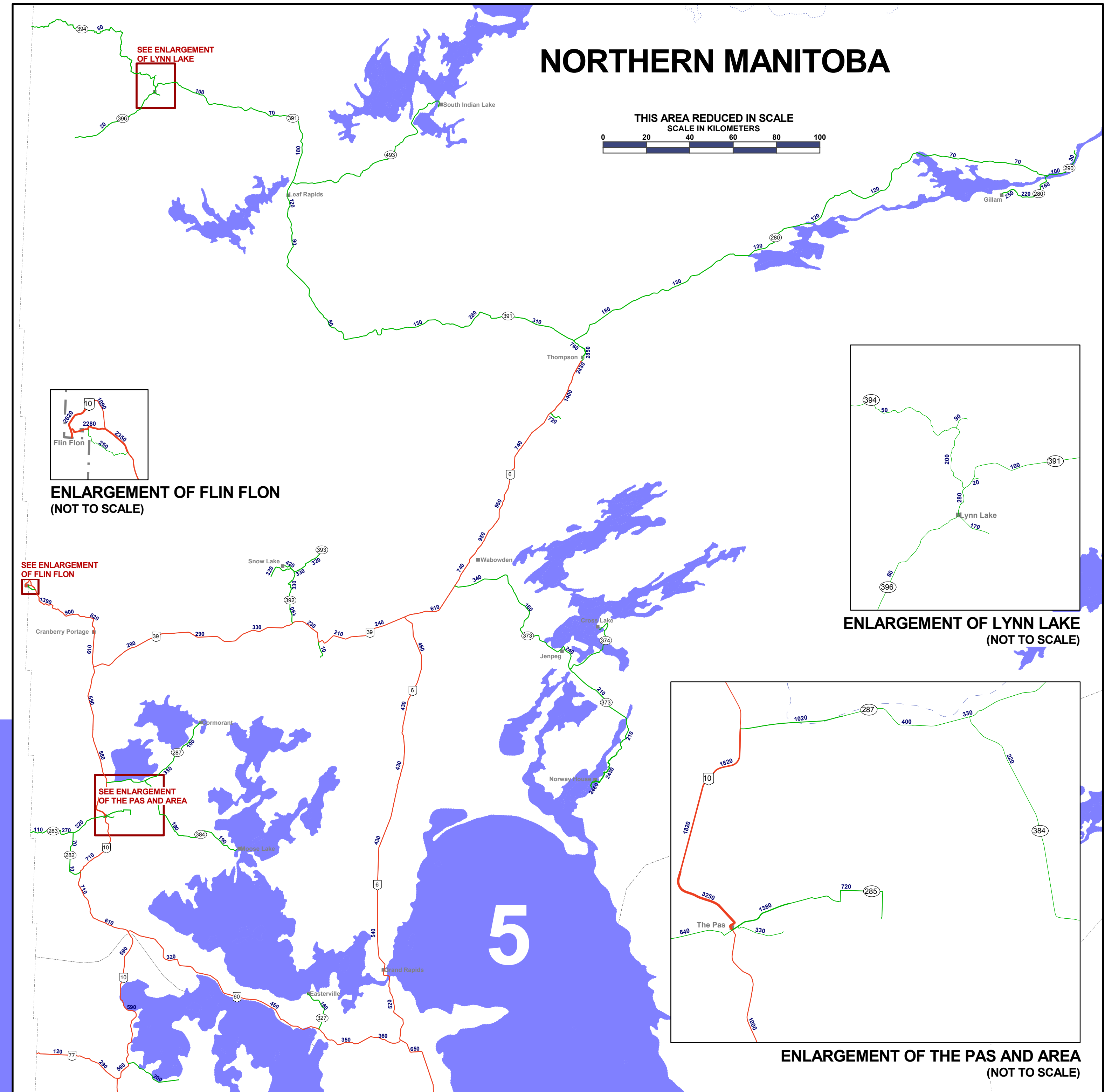


# 2005 Traffic Flow Map

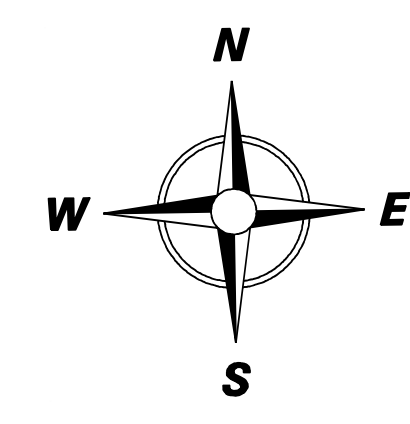


ENLARGEMENT OF WINNIPEG AND AREA (NOT TO SCALE)



## NORTHERN MANITOBA

THIS AREA REDUCED IN SCALE  
SCALE IN KILOMETERS  
0 20 40 60 80 100



SCALE IN KILOMETERS  
0 10 20 30 40 50

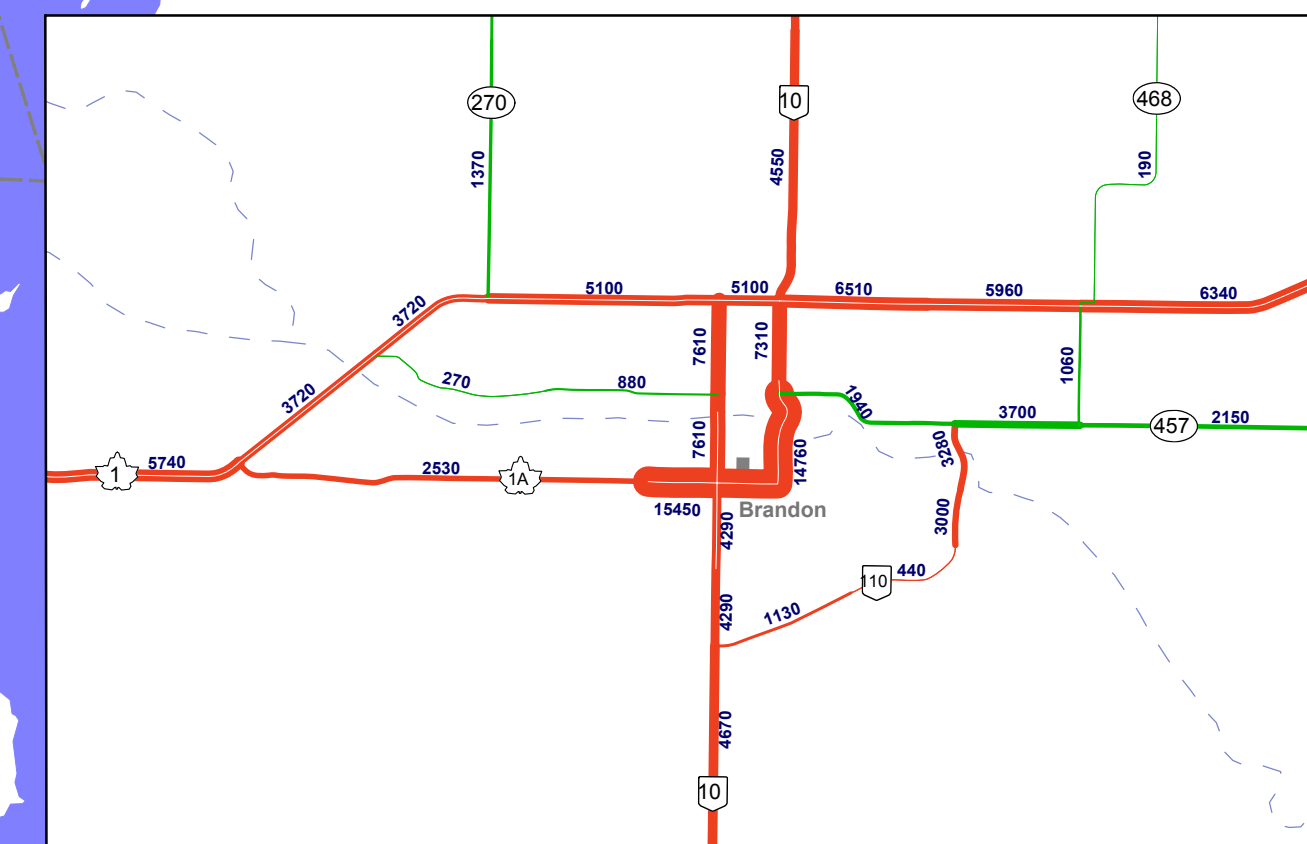
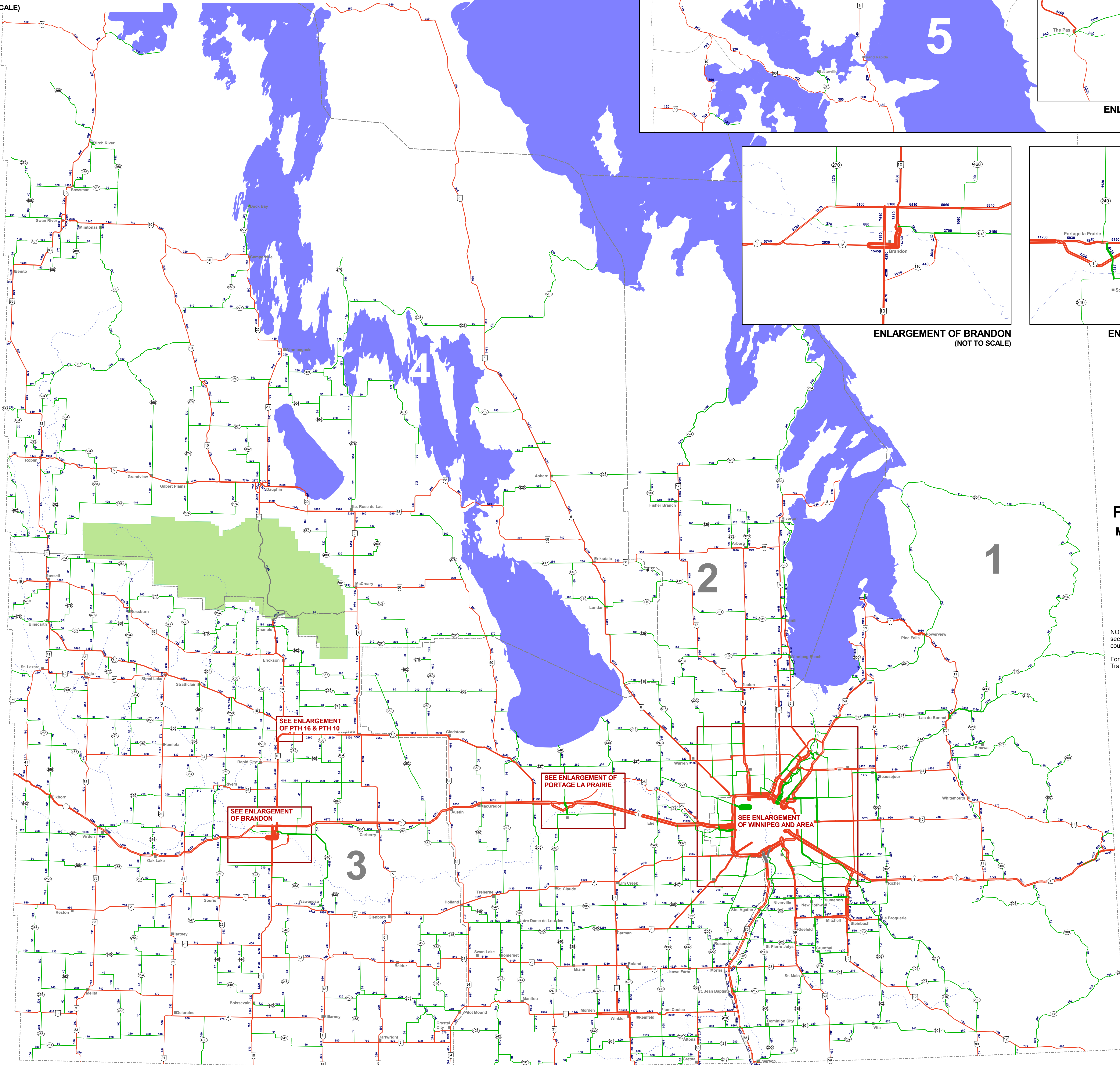
**Provincial Highway Network**  
 — Other Road  
 — Provincial Road  
 — Provincial Trunk Highway

**AADT**  
 20,000 10,000 5,000

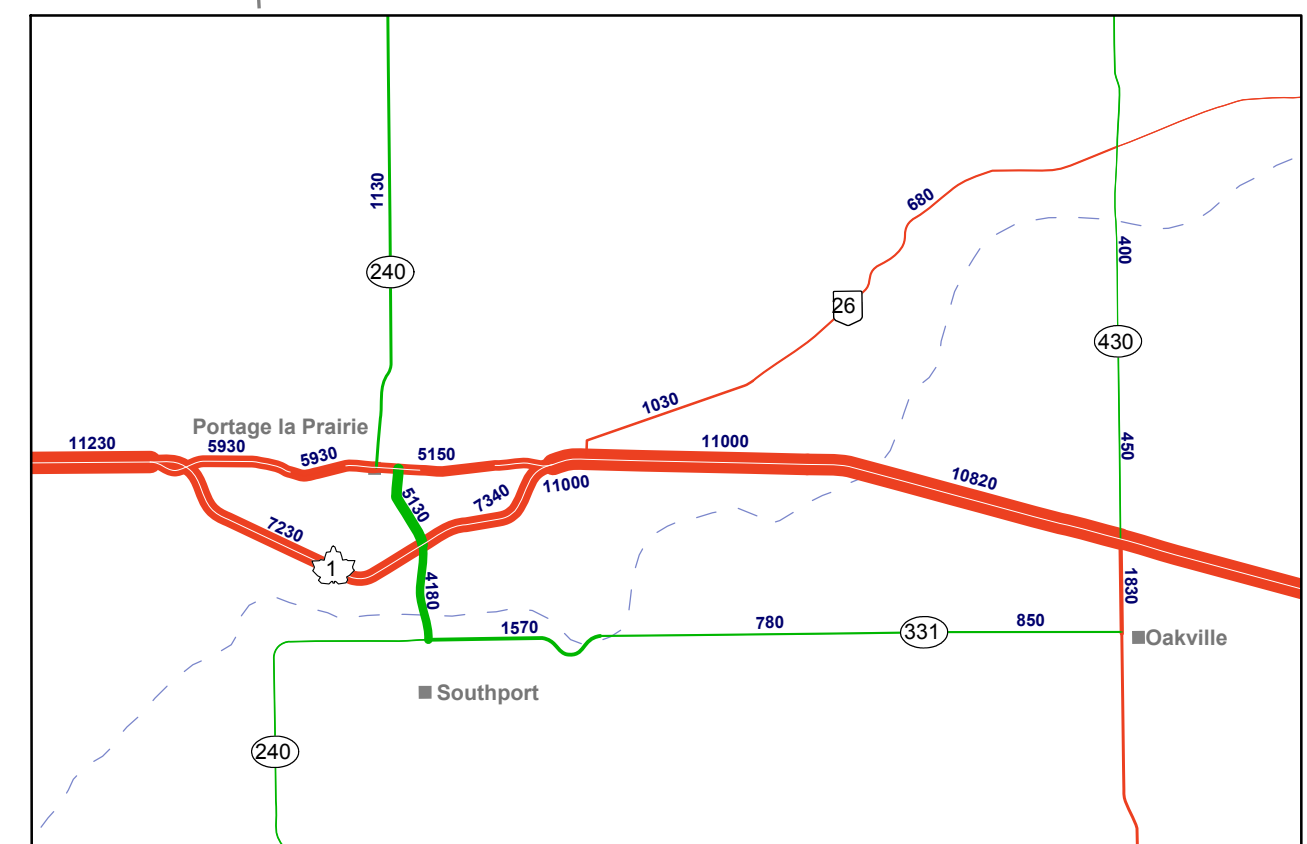
ENLARGEMENT OF FLIN FLON (NOT TO SCALE)

ENLARGEMENT OF LYNN LAKE (NOT TO SCALE)

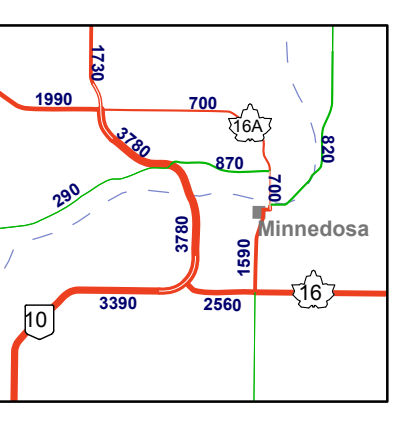
ENLARGEMENT OF THE PAS AND AREA (NOT TO SCALE)



ENLARGEMENT OF BRANDON (NOT TO SCALE)



ENLARGEMENT OF PORTAGE LA PRAIRIE (NOT TO SCALE)



ENLARGEMENT OF PTH 10 & PTH 16 (NOT TO SCALE)

SEE ENLARGEMENT OF PTH 16 & PTH 10

SEE ENLARGEMENT OF PORTAGE LA PRAIRIE

SEE ENLARGEMENT OF WINNIPEG AND AREA

SEE ENLARGEMENT OF BRANDON

## PROVINCE OF MANITOBA MANITOBA TRANSPORTATION AND GOVERNMENT SERVICES Traffic Engineering Branch

### Annual Average Daily Traffic on Provincial Trunk Highways and Provincial Roads

NOTE: Numbers in the map denote two-way total traffic on each highway section. All traffic estimates are derived from the most recent vehicle counts. These may have been taken from 2000 through 2005 inclusive.  
For official estimates of AADT on all highways in Manitoba please refer to Traffic on Manitoba Highways 2005.