

Functional & Preliminary Design Study: PR 283 from PTH 10 to the Saskatchewan Boundary & Structure over Pasquia River

Purpose and Background

Manitoba Transportation and Infrastructure (MTI) is completing a design study of PR 283 from PTH 10 (Fischer Ave.) in The Pas to the provincial border, including the PR 283 bridge over the Pasquia River.

The purpose of the study is to design PR 283 for increased loading capacity and upgrade roadway geometry to modern safety standards.



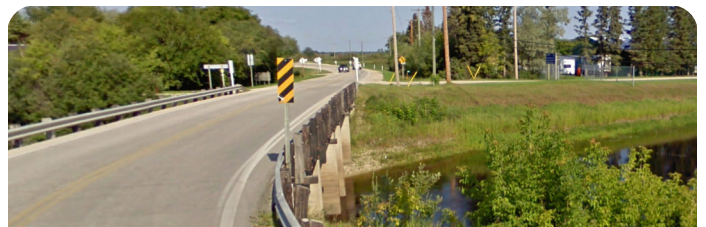
- This study is the first step in the PR 283 reconstruction project which will support the local economy and promote interprovincial trade in the agriculture and forestry sector.



- For the Functional and Preliminary Design Study currently underway, the design team will investigate a minimum of three road alignment and bridge replacement options.



- Future redevelopment of the Knapp Dam will be considered in determining the road alignment and bridge replacement options.



Phase 1 Engagement and Next Steps

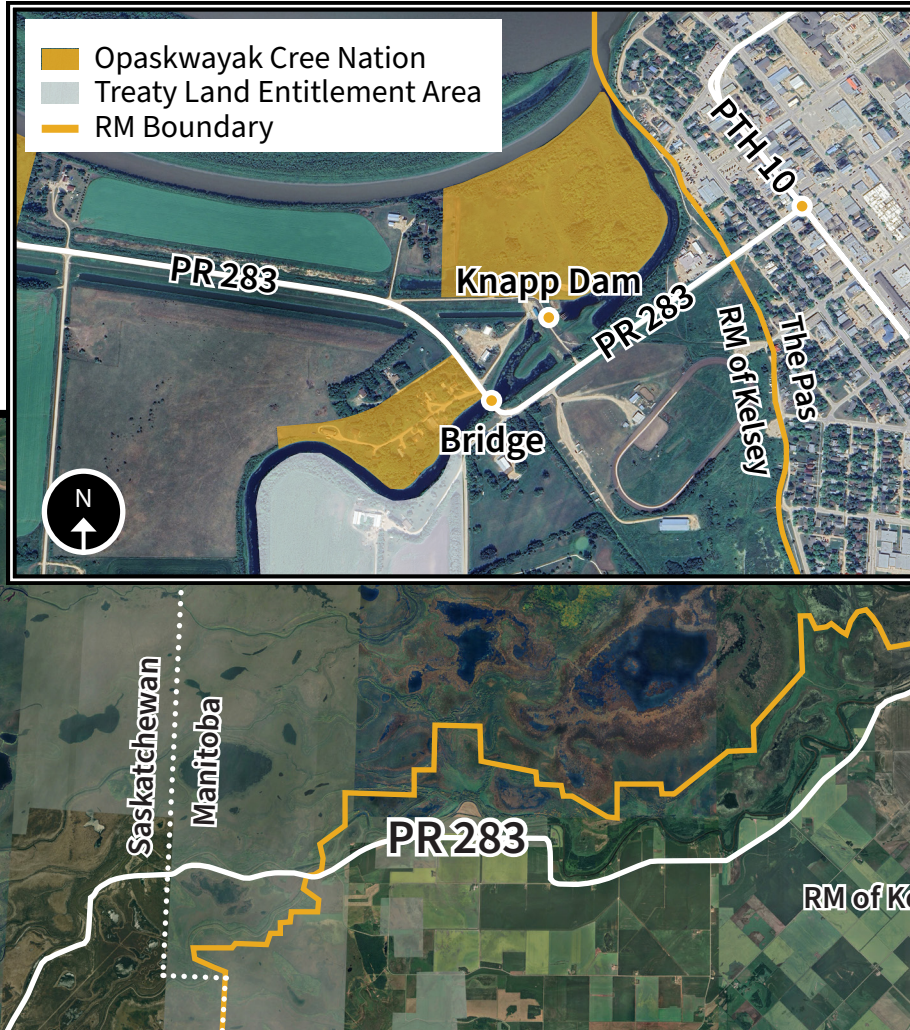
In the summer of 2024, the project team met with Opaskaway Cree Nation, the RM of Kelsey, the Town of The Pas, landowners adjacent to PR 283, and other stakeholders to present the project and obtain feedback.

The feedback received will be considered in the development of the road alignment and bridge replacement options.

The next round of Rights Holder and stakeholder meetings to present and collect feedback on the options is anticipated to take place this coming winter 2025.

Phase 1 Newsletter Summary

Study Area



**For additional information,
please contact:**

David Paton
Engagement Planner

E: David.Paton@wsp.com

T: (204) 259-5428

Timeline (subject to change)

