

Functional & Preliminary Design Study:
PR 283 from PTH 10 to the
Saskatchewan Boundary & Structure
over Pasquia River

Stakeholder Meeting

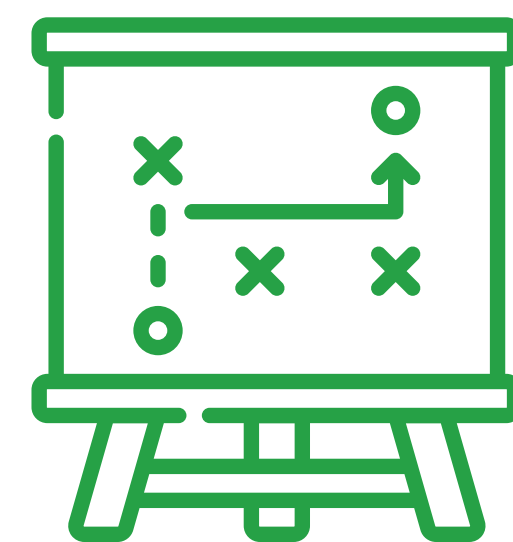
Summer 2024



The **purpose** of today's meeting is to:



Introduce the project team.



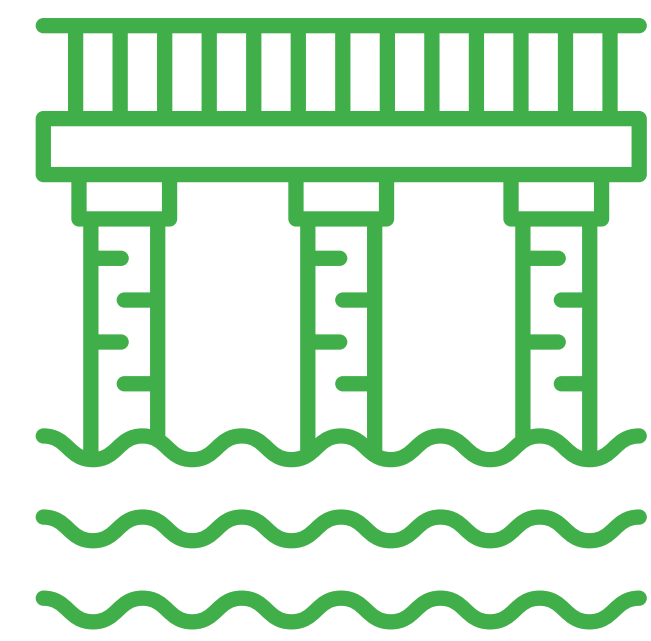
Provide information on the **purpose, scope, and timing** of the project.



Develop an understanding of any **potential impacts or constraints** that should be considered as part of the Functional and Preliminary Design Study.



Provide an opportunity for you to **share your input and ask questions** of the design team and Manitoba Transportation and Infrastructure.



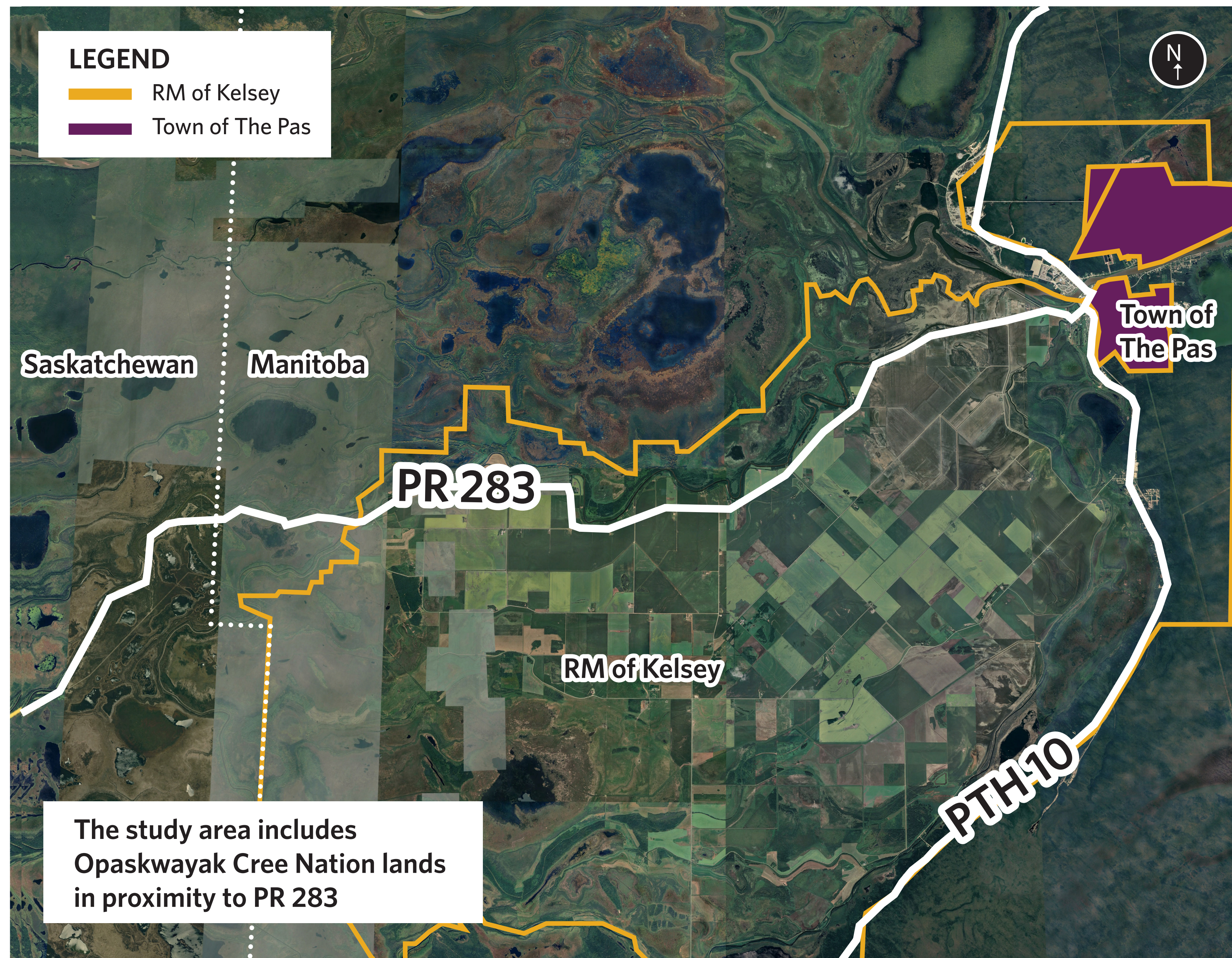
The existing bridge was
constructed in

1941

and carries two lanes
of traffic (one in each
direction on PR 283) over
the Pasquia River.

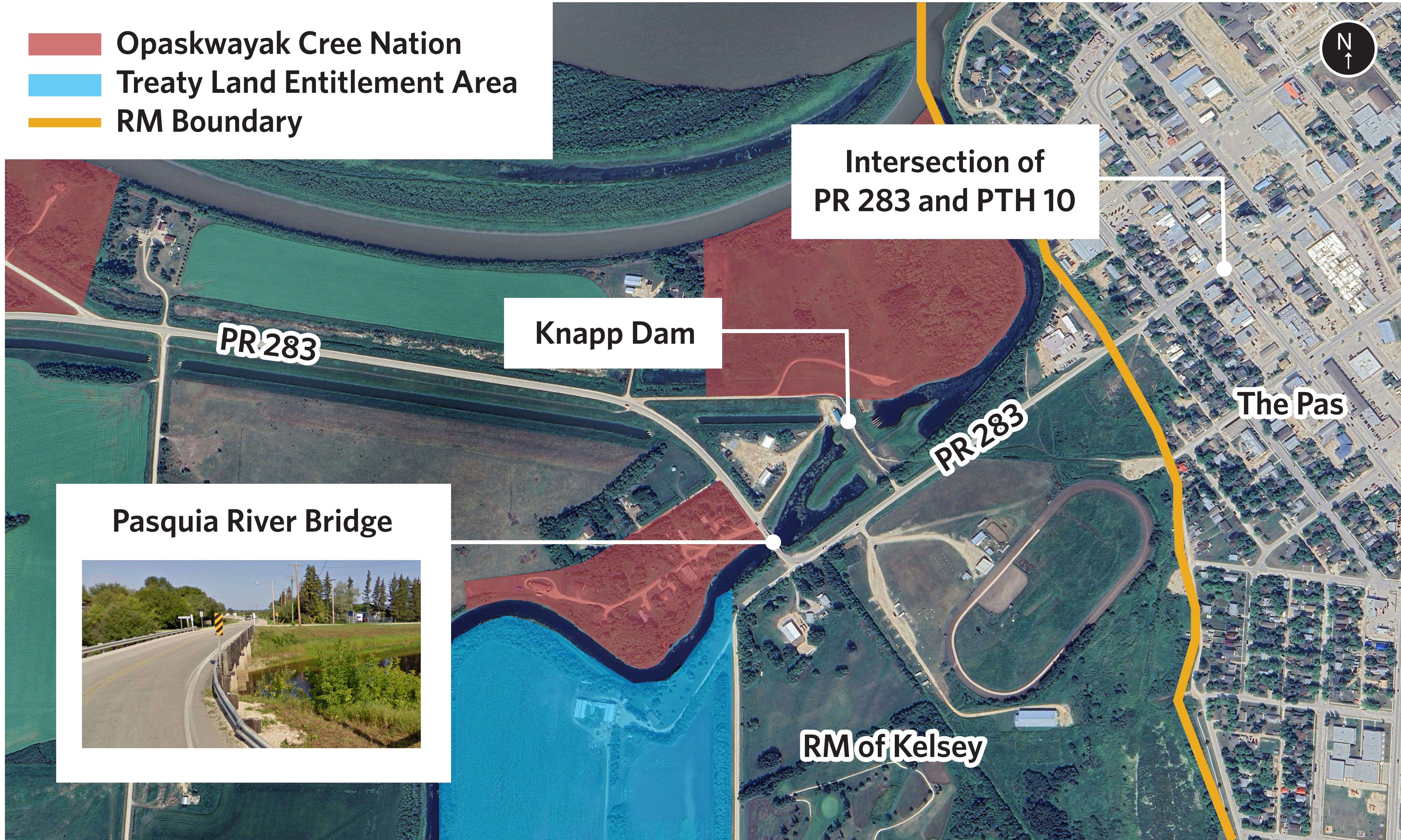
- » The existing bridge structure has loading capacity limitations and is well beyond the 50 years of service life that it was designed for. Inspections are performed regularly to ensure public safety; however, due to its age, there is a possibility of the need for major repairs at any time to allow it to remain open.
- » Provincial Road (PR) 283, including the bridge over the Pasquia River, is a trade and commerce route and requires upgrades to carry heavy truck traffic and remove spring road restrictions.
- » For the Functional and Preliminary Design Study currently underway, **the design team will investigate a minimum of three road alignment and bridge replacement options.**
- » Future redevelopment of the Knapp Dam will be considered in determining the road alignment and bridge replacement options.





- » The study area includes PR 283 from PTH 10 (Fischer Ave.) in The Pas to the provincial border.
- » The existing bridge over the Pasquia River and the Knapp Dam and associated water operations maintenance yard are within in the study area.
- » PR 283 traverses through Opaskwayak Cree Nation lands.
- » A section of PR 283 between the RM of Kelsey and the provincial border is in unorganized territory.

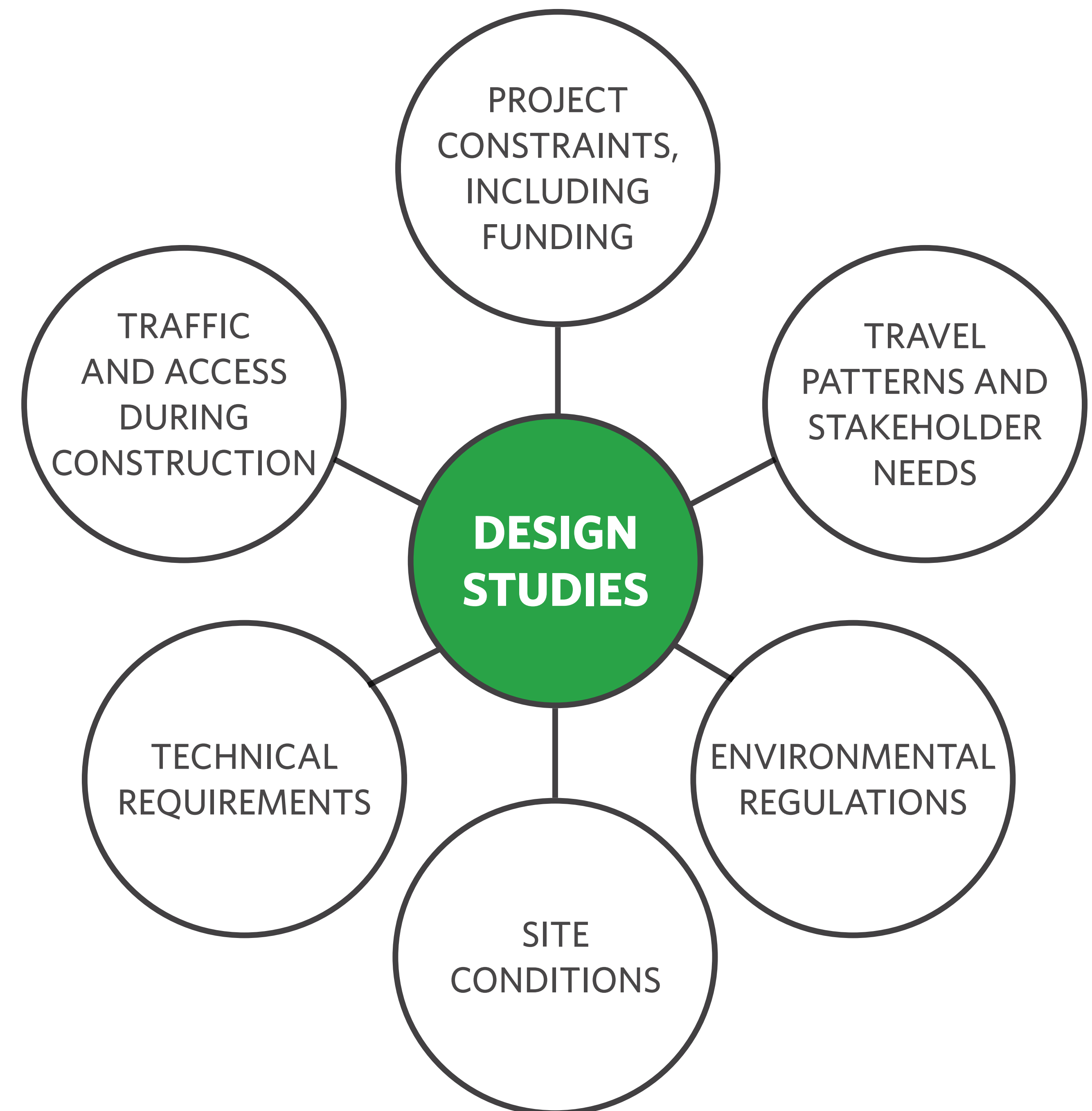
Study Area



MTI engaged WSP to complete a **Functional Design Study of PR 283 and a Preliminary Design Study of a new bridge over the Pasquia River** (including realignment of PR 283).

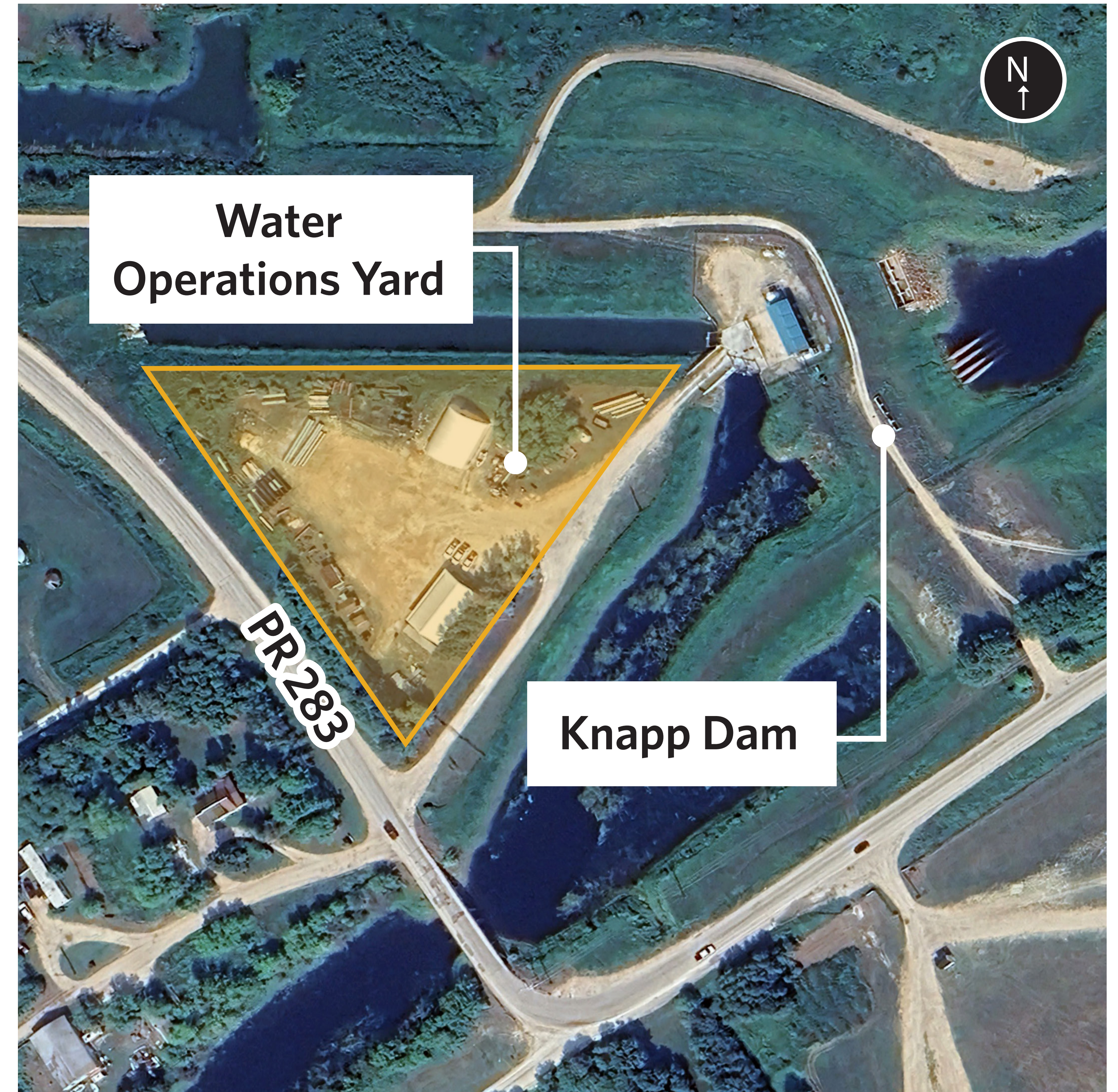
The design studies will:

- » Develop road alignment and bridge replacement alternatives
- » Identify a preferred alternative
- » Finalize the functional design of PR 283 and the preliminary design of the new bridge



Knapp Dam:

- » The scope of this project includes updating a previously completed preliminary design for the rehabilitation/reconstruction of the Knapp Dam.
- » The project will consider the needs and impacts of the Knapp Dam concurrently with the road alignment and bridge replacement alternatives.
- » Relocation of the water operations yard may be necessary to accommodate the preferred road alignment and bridge replacement alternative.



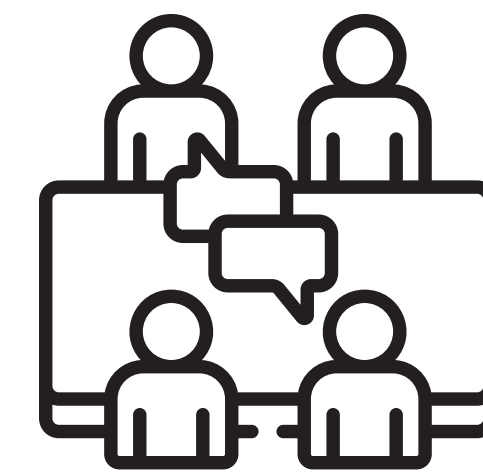
The engagement process for this project involves:

- » Local governments;
- » Adjacent landowners;
- » Indigenous Rights Holders;
- » Local interest groups; and
- » The public.

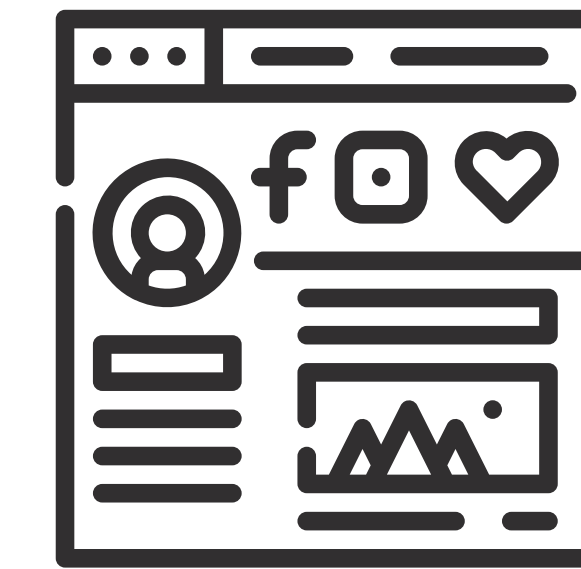
The objectives of the public engagement process are:

- » To convey clear information about the project, including its scope and timing.
- » To gather input on:
 - » The proposed alternatives; and
 - » The preferred alternative.

Engagement techniques:



Stakeholder and Rights Holder meetings



Project webpage updates



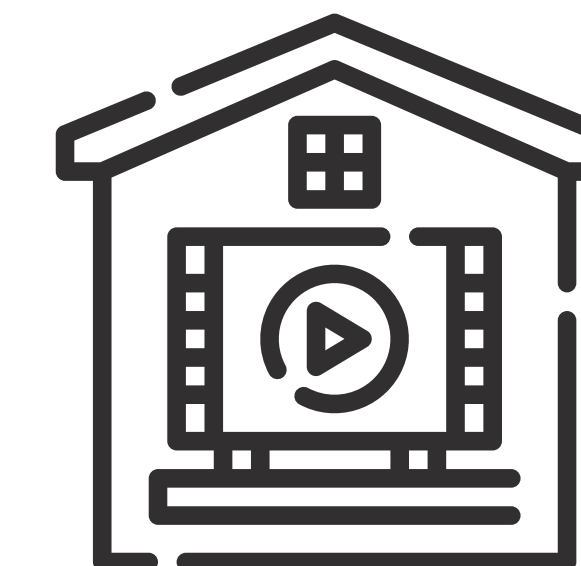
Newsletters



Online questionnaires

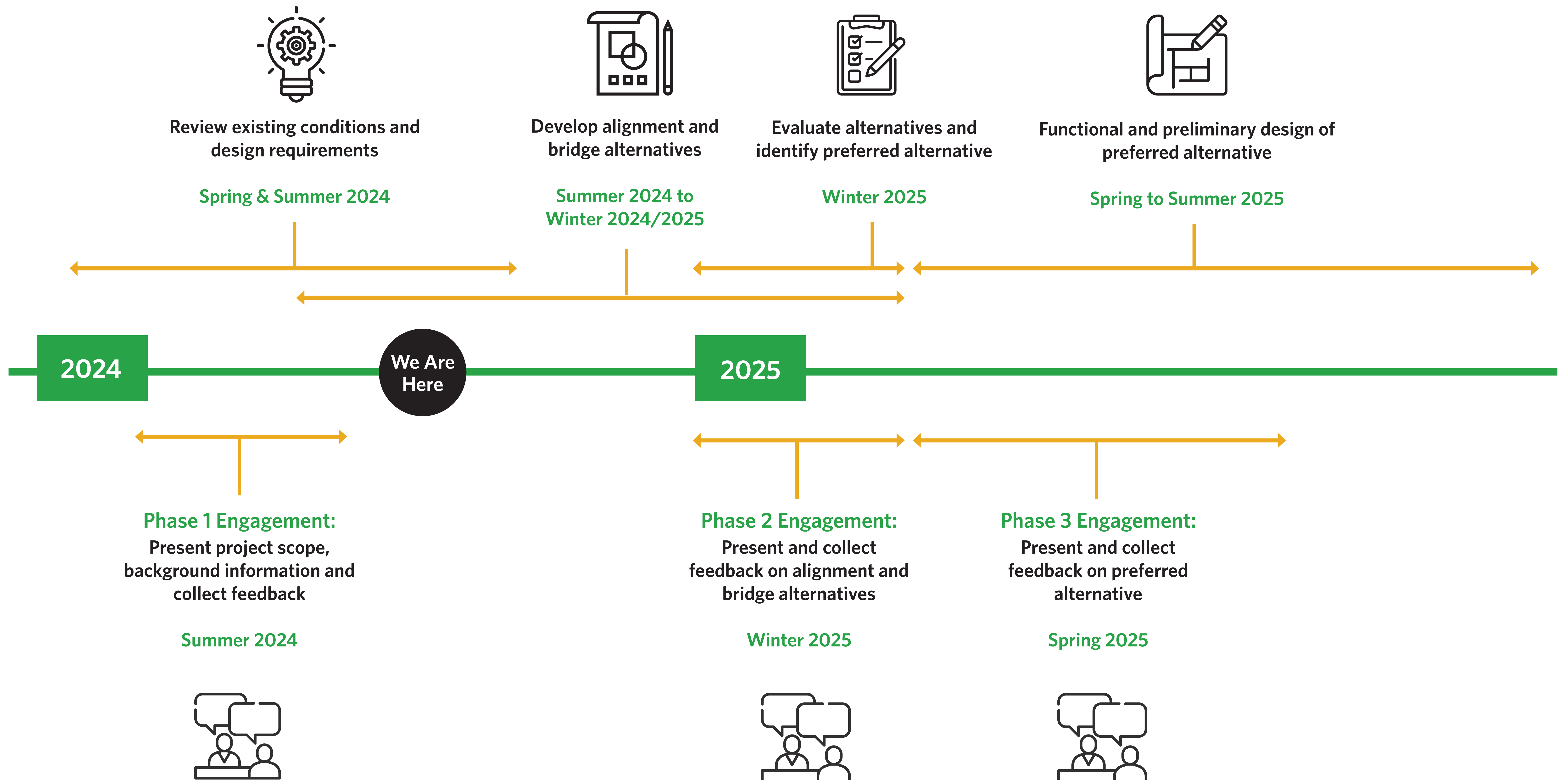


Telephone conversations

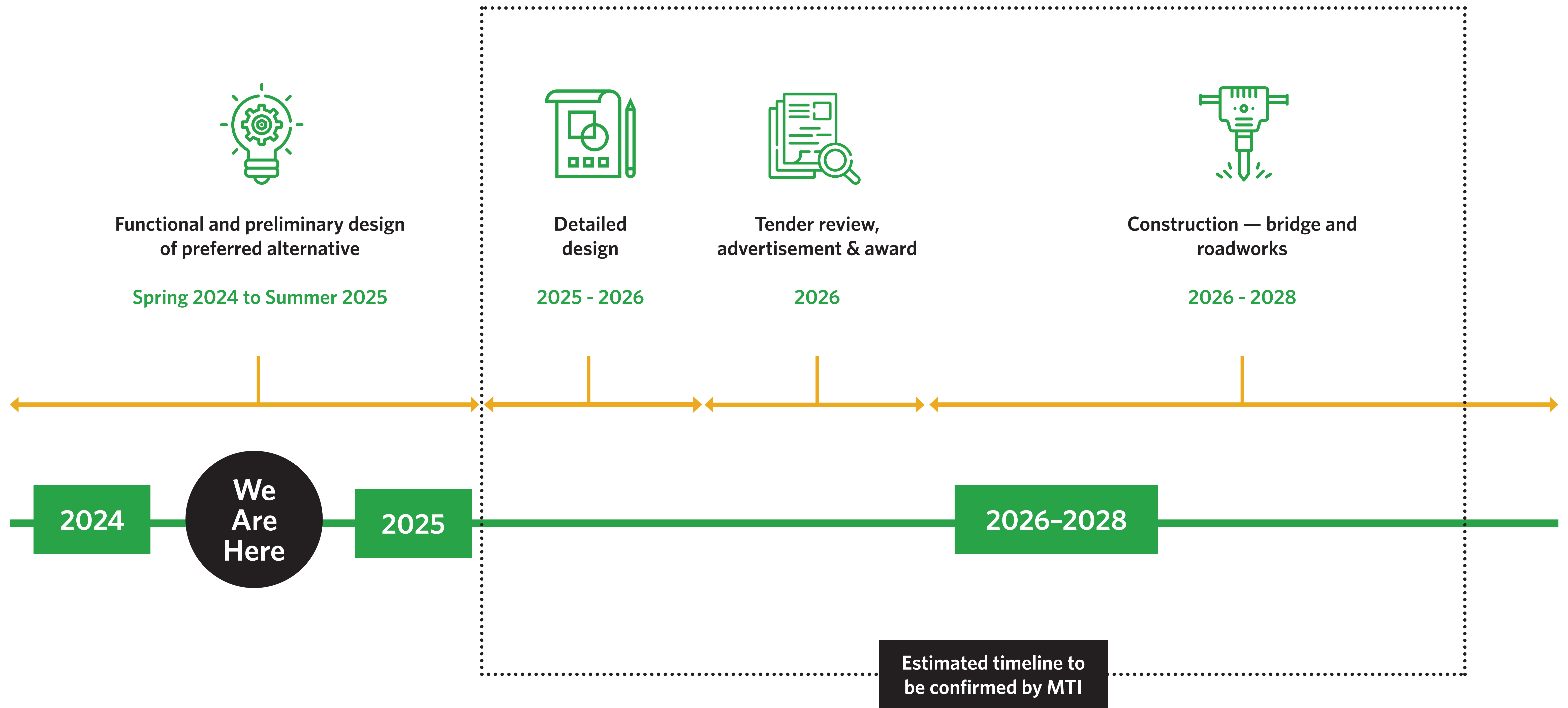


Public open house

Functional and Preliminary Design Timeline 9



Proposed Project Timeline



What issues, constraints, key access points, etc., should the design team take into consideration when preparing the design alternatives?

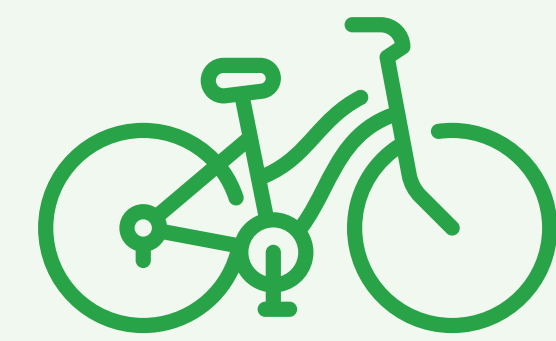


Development

- » Are there any recent or upcoming plans for development within the study area or surrounding area that may be impacted by the project or construction?
- » Are there any planned community priorities, municipal hook ups, or other servicing infrastructure upgrades within the study area that could impact the construction schedule?
- » In what ways can the Functional and Preliminary Design Study support future development plans, infrastructure upgrades, and/or community priorities?



What issues, constraints, key access points, etc., should the design team take into consideration when preparing the design alternatives?



Cycling & Pedestrians

- » What are the current pedestrian and cycling uses that could be considered in the design study?
- » What are the current gaps in existing pedestrian and cycling facilities that could be addressed within the study scope?
- » Are there any plans for additional future trail or pathway connections within the study area?

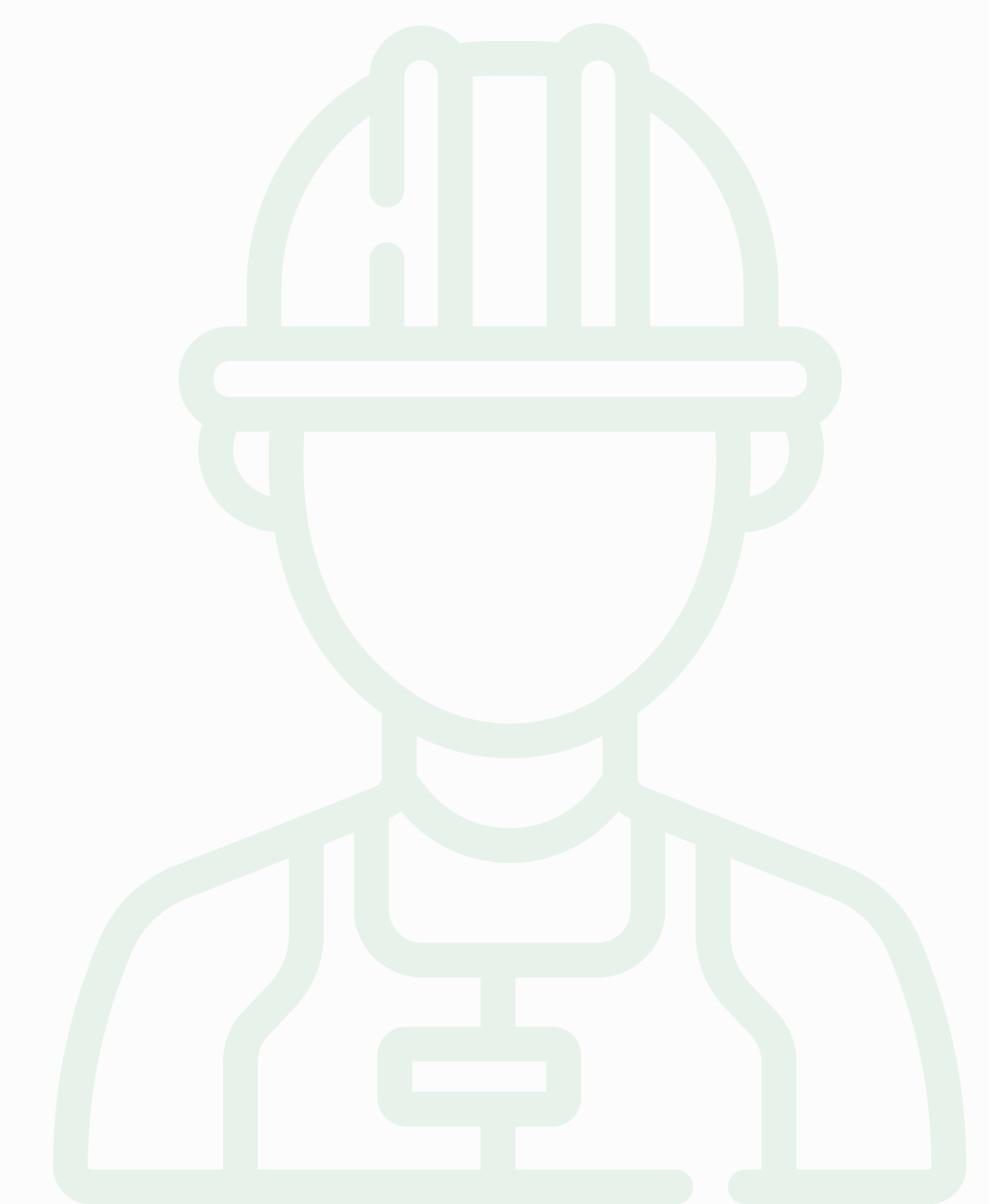


What issues, constraints, key access points, etc., should the design team take into consideration when preparing the design alternatives?



Construction Staging

- » Is there a particular time of year when construction would not be ideal?
- » What will be the active transportation needs and access requirements during construction?

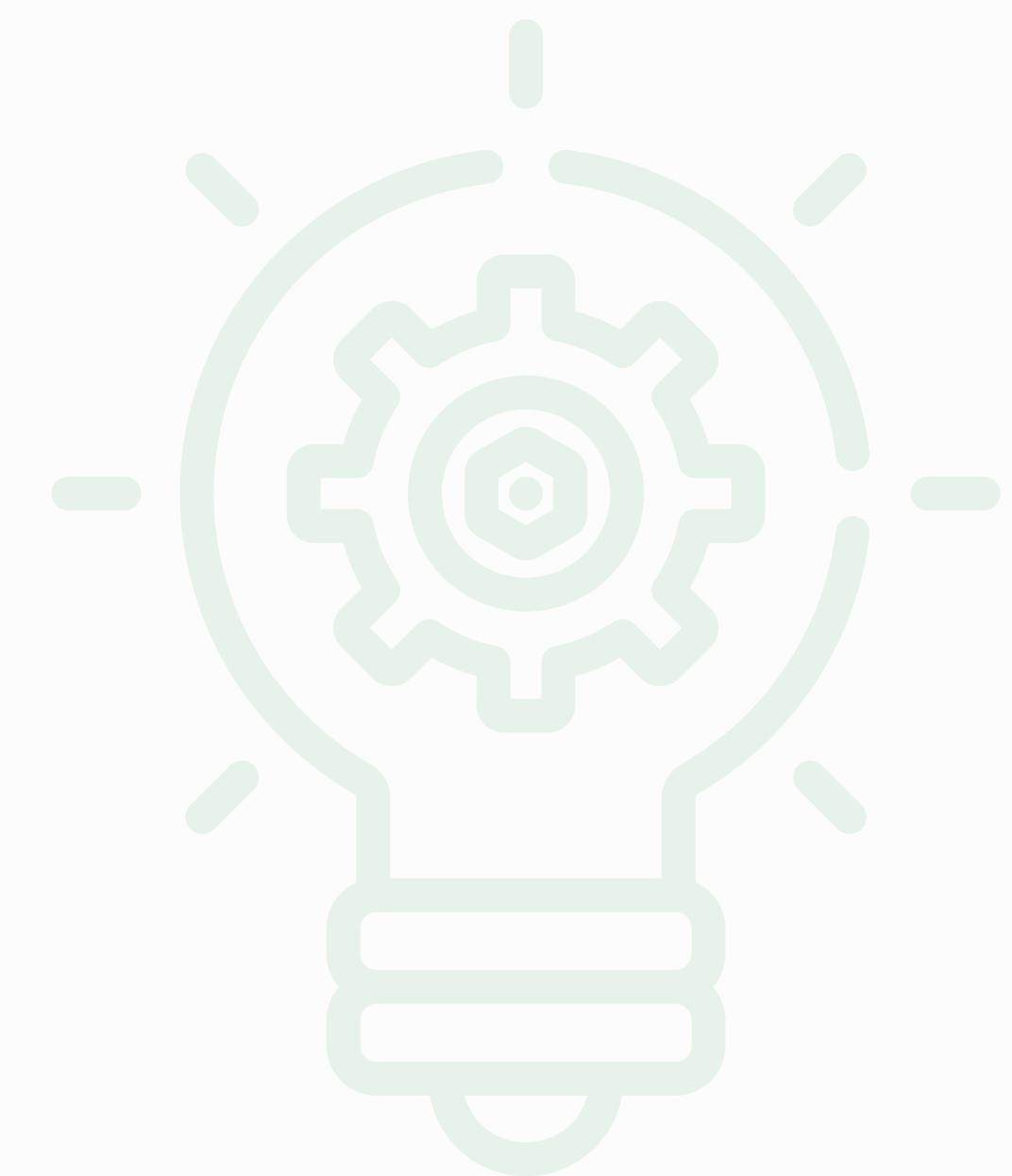


What issues, constraints, key access points, etc., should the design team take into consideration when preparing the design alternatives?



Additional

- » Are there any other additional issues or concerns you would like to share with the project team?





After completion of **Phase 1 Engagement**, the project team will focus on developing the alignment and bridge design alternatives.

Phase 2 Engagement (Winter 2025) will include a presentation of the proposed design alternatives and ask for feedback.



Q & A



Thank you for attending.

For additional information, please contact:

Meagan Boles, Engagement Lead

E: Meagan.Boles@wsp.com

T: (204) 259-1628