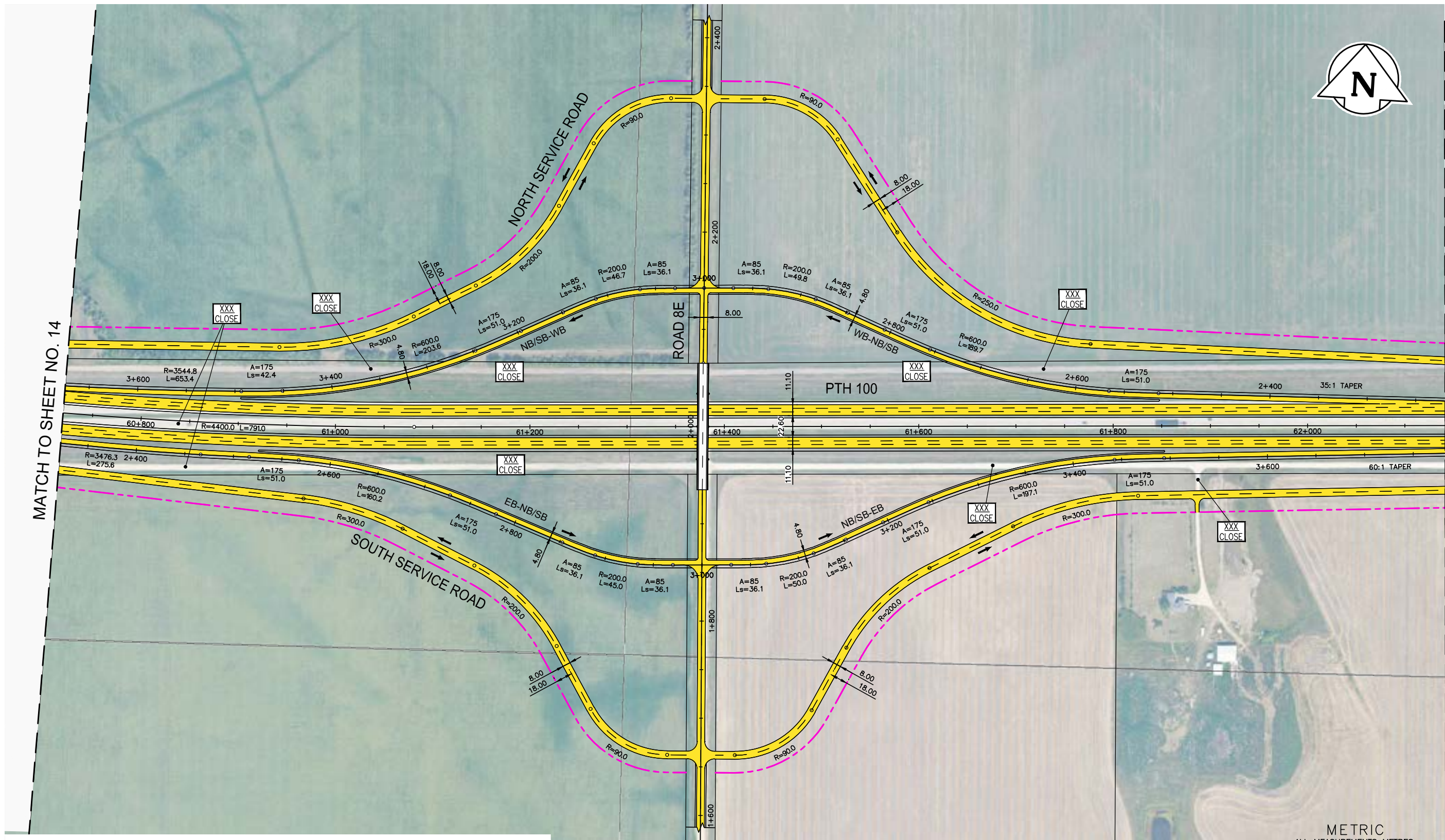




MATCH TO SHEET NO. 14

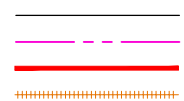
MATCH TO SHEET NO. 16



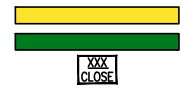
METRIC
ALL MEASUREMENTS METRES,
UNLESS STATED OTHERWISE

LEGEND-PLAN:

EXISTING PROPERTY LINE
PROPOSED PROPERTY LINE
RETAINING WALL
RAIL



PROPOSED ROADWAY
MULTI-USE TRAIL
ROAD CLOSURE



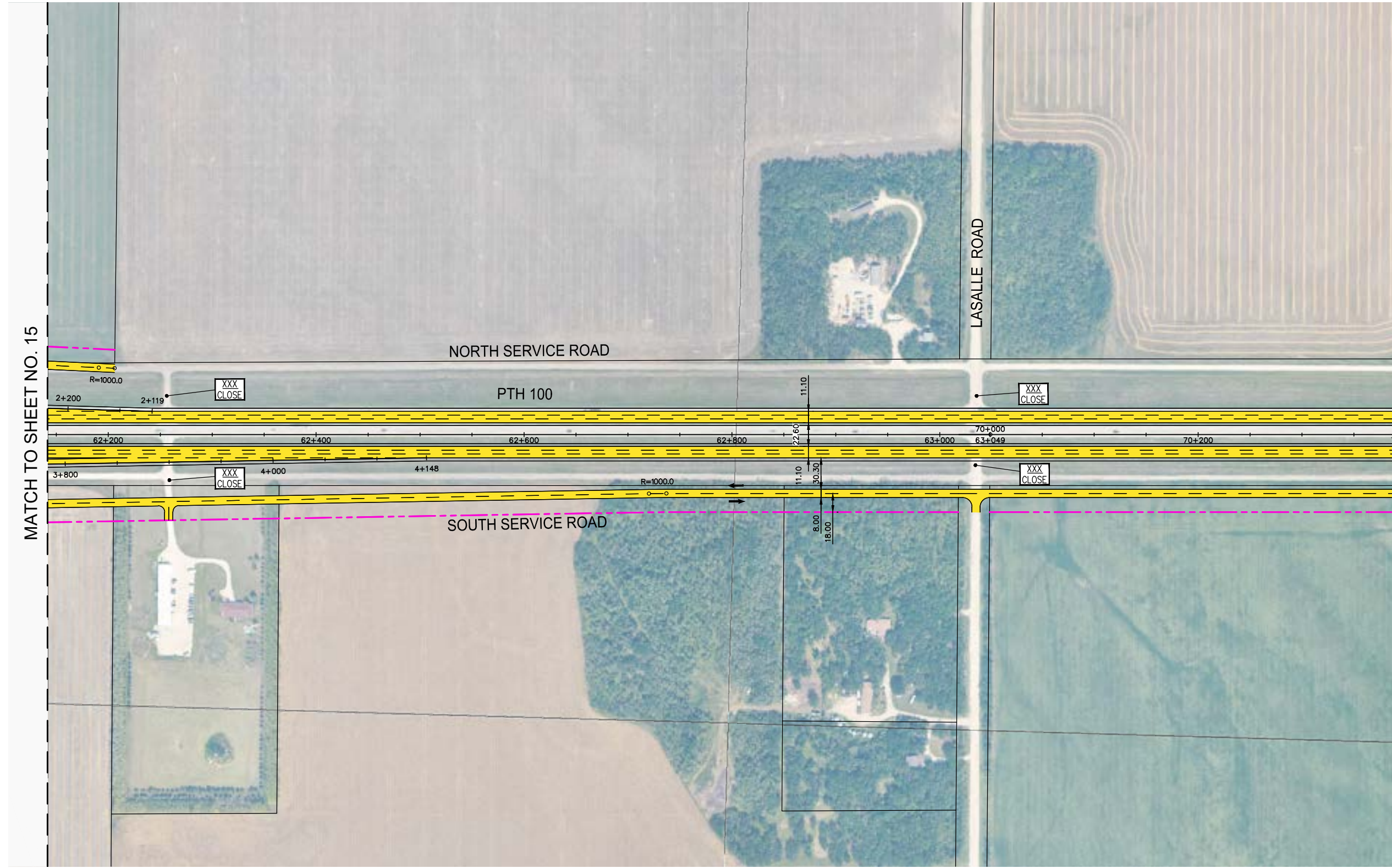
NOTE:
These design documents are prepared solely for the use by the party with whom the design professional has entered into a contract and there are no representations of any kind made by the design professional to any party with whom the design professional has not entered into a contract.



WSP Canada Group Limited
Suite 111 - 93 Lombard Ave
Winnipeg, MB R3B 3B1
t. 204.943.3178
f. 204.943.4948
www.wsp.com

MANITOBA INFRASTRUCTURE
SOUTH PERIMETER HIGHWAY DESIGN STUDY
ULTIMATE STAGE PLANS
PTH 100 AT ROAD 8 EAST

SCALE: 1:4000	DATE: 20-06-26	DWG. No. ULT-100-A	SHEET. No. 15 OF 44
------------------	-------------------	-----------------------	------------------------



MATCH TO SHEET NO. 15

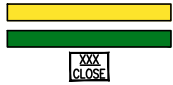
MATCH TO SHEET NO. 17

LEGEND-PLAN:

EXISTING PROPERTY LINE
PROPOSED PROPERTY LINE
RETAINING WALL
RAIL



PROPOSED ROADWAY
MULTI-USE TRAIL
ROAD CLOSURE



METRIC
ALL MEASUREMENTS METRES,
UNLESS STATED OTHERWISE

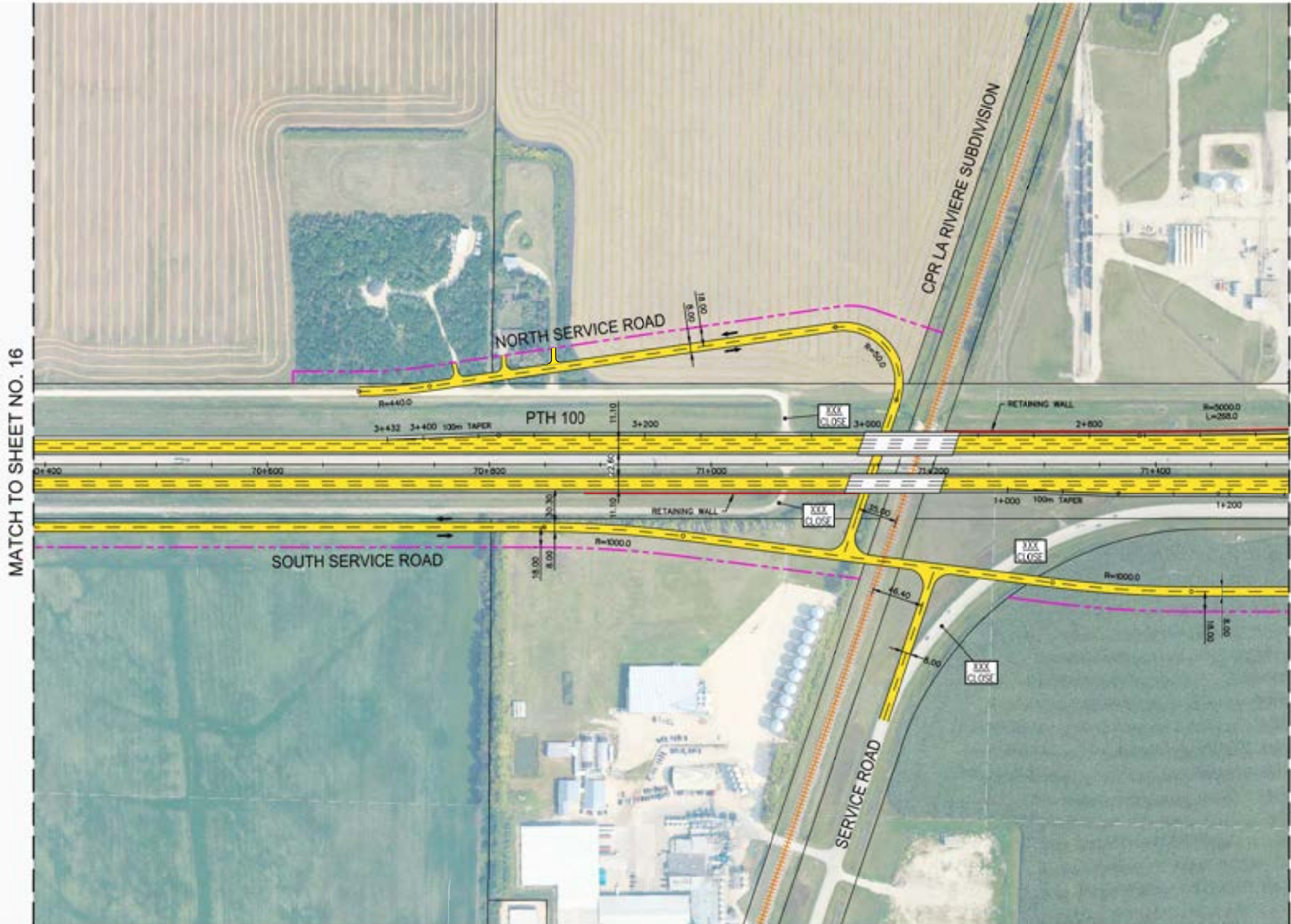


WSP Canada Group Limited
Suite 111 - 93 Lombard Ave
Winnipeg, MB R3B 3B1
t. 204.943.3178
f. 204.943.4948
www.wsp.com

MANITOBA INFRASTRUCTURE
SOUTH PERIMETER HIGHWAY DESIGN STUDY
ULTIMATE STAGE PLANS
PTH 100

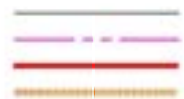
NOTE:
These design documents are prepared solely for the use by the party with whom the design professional has entered into a contract and there are no representations of any kind made by the design professional to any party with whom the design professional has not entered into a contract.

SCALE: 1:4000	DATE: 20-06-26	DWG. No. ULT-100-A	SHEET. No. 16 OF 44
------------------	-------------------	-----------------------	------------------------



LEGEND-PLAN:

EXISTING PROPERTY LINE
 PROPOSED PROPERTY LINE
 RETAINING WALL
 RAIL



PROPOSED ROADWAY
 MULTI-USE TRAIL
 ROAD CLOSURE



METRIC
 ALL MEASUREMENTS METRES,
 UNLESS STATED OTHERWISE

NOTE:
 These design documents are prepared solely for the use by the party with whom the design professional has entered into a contract and there are no representations of any kind made by the design professional to any party with whom the design professional has not entered into a contract.



WSP Canada Group Limited
 Suite 111 - 93 Lombard Ave
 Winnipeg, MB R3B 3B1
 T. 204.943.3178
 F. 204.943.4948
 www.wsp.com

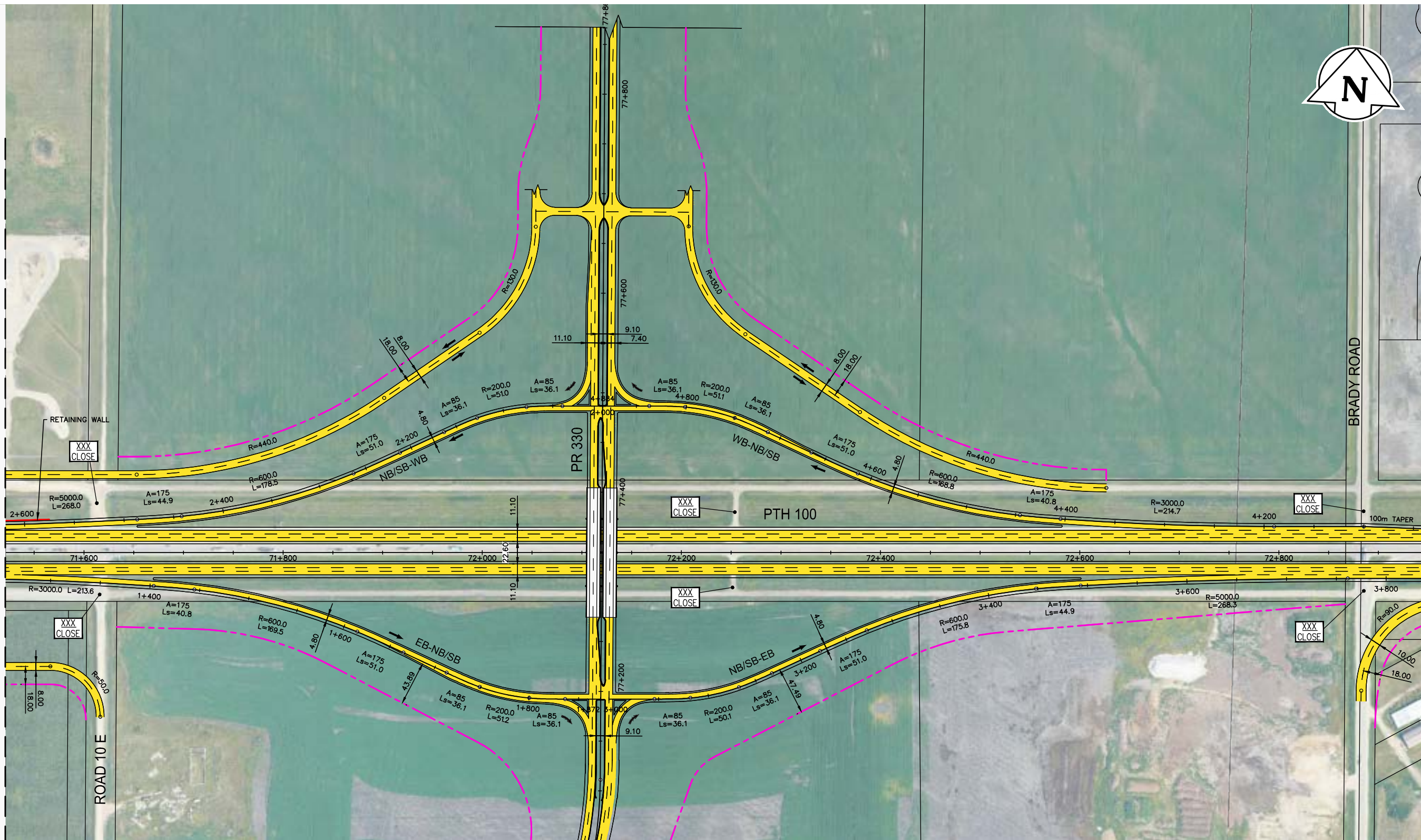
MANITOBA INFRASTRUCTURE
 SOUTH PERIMETER HIGHWAY DESIGN STUDY
 ULTIMATE STAGE PLANS
 PTH 100 AT CPR LA RIVIERE

SCALE: 1:4000	DATE: 20-06-26	DWG. No. ULT-100-A	SHEET. No. 17 OF 44
------------------	-------------------	-----------------------	------------------------



MATCH TO SHEET NO. 17

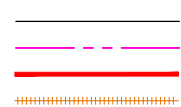
MATCH TO SHEET NO. 21



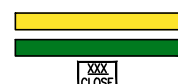
MATCH TO SHEET NO. 19

LEGEND-PLAN:

EXISTING PROPERTY LINE
 PROPOSED PROPERTY LINE
 RETAINING WALL
 RAIL



PROPOSED ROADWAY
 MULTI-USE TRAIL
 ROAD CLOSURE



METRIC
 ALL MEASUREMENTS METRES,
 UNLESS STATED OTHERWISE

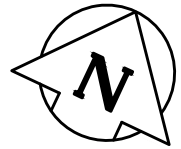
NOTE:
 These design documents are prepared solely for the use by the party with whom the design professional has entered into a contract and there are no representations of any kind made by the design professional to any party with whom the design professional has not entered into a contract.



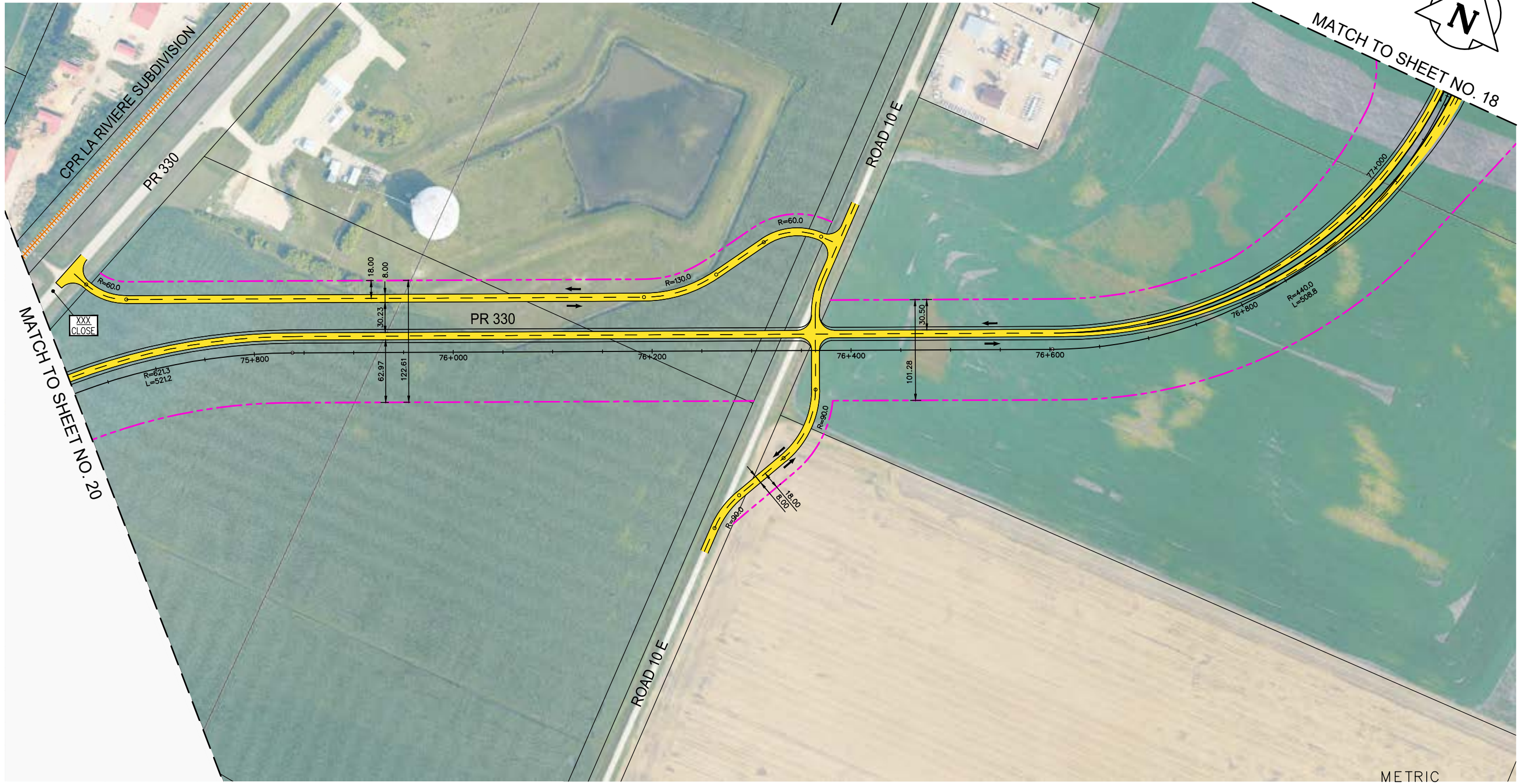
WSP Canada Group Limited
 Suite 111 - 93 Lombard Ave
 Winnipeg, MB R3B 3B1
 t. 204.943.3178
 f. 204.943.4948
 www.wsp.com

MANITOBA INFRASTRUCTURE
 SOUTH PERIMETER HIGHWAY DESIGN STUDY
 ULTIMATE STAGE PLANS
 PTH 100 AT PR 330

SCALE: 1:4000	DATE: 20-06-26	DWG. No. ULT-100-A	SHEET. No. 18 OF 44
------------------	-------------------	-----------------------	------------------------



MATCH TO SHEET NO. 18



MATCH TO SHEET NO. 20

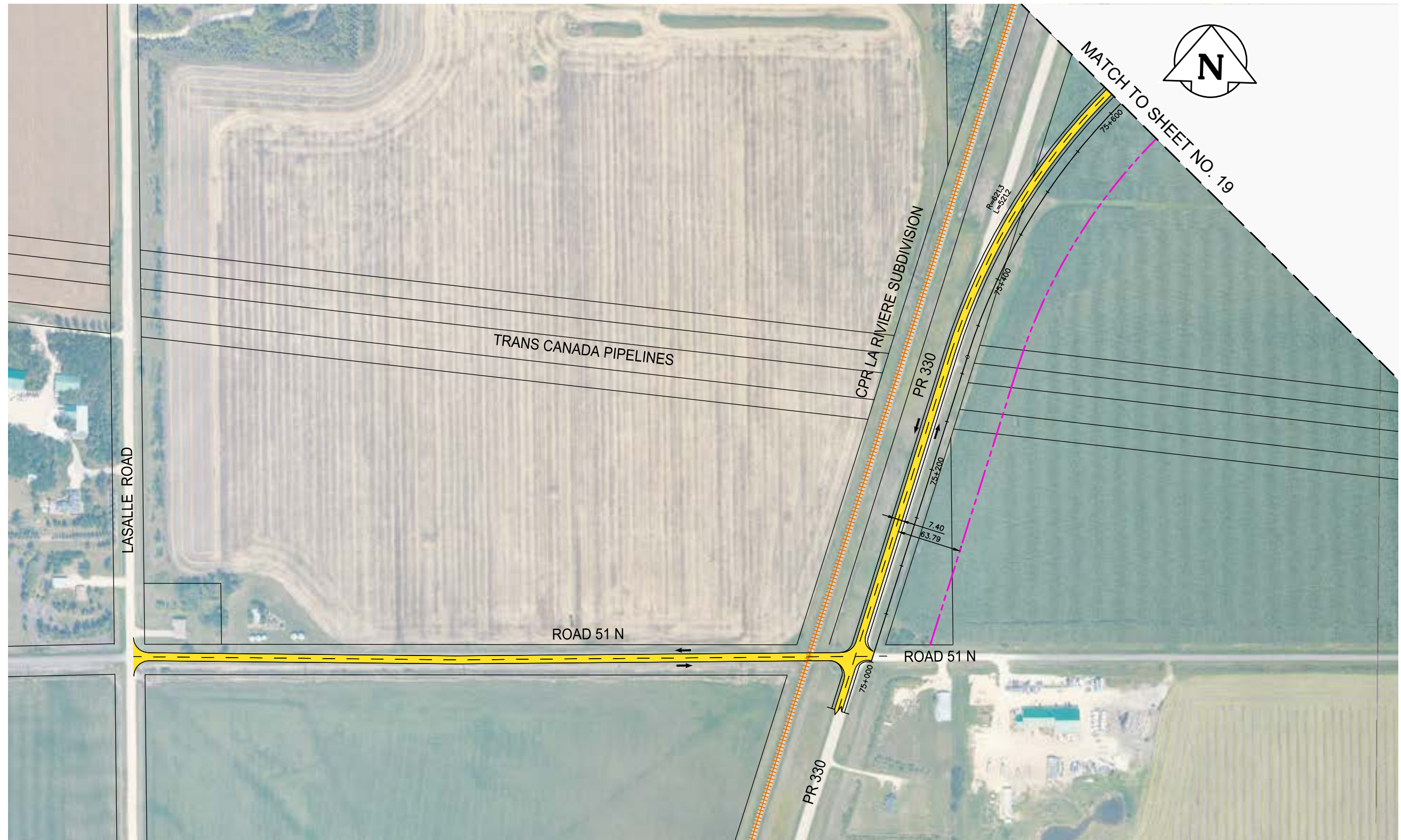
LEGEND-PLAN:

- EXISTING PROPERTY LINE
- PROPOSED PROPERTY LINE
- RETAINING WALL
- RAIL
- PROPOSED ROADWAY
- MULTI-USE TRAIL
- ROAD CLOSURE
-
-

METRIC
ALL MEASUREMENTS METRES,
UNLESS STATED OTHERWISE

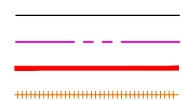
NOTE:
These design documents are prepared solely for the use by the party with whom the design professional has entered into a contract and there are no representations of any kind made by the design professional to any party with whom the design professional has not entered into a contract.

	WSP Canada Group Limited Suite 111 - 93 Lombard Ave Winnipeg, MB R3B 3B1 t. 204.943.3178 f. 204.943.4948 www.wsp.com		MANITOBA INFRASTRUCTURE SOUTH PERIMETER HIGHWAY DESIGN STUDY ULTIMATE STAGE PLANS PR 330 SOUTH OF PTH 100	
	SCALE: 1:4000	DATE: 20-06-26	DWG. No. ULT-100-A	SHEET. No. 19 OF 44

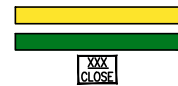


LEGEND-PLAN:

EXISTING PROPERTY LINE
 PROPOSED PROPERTY LINE
 RETAINING WALL
 RAIL



PROPOSED ROADWAY
 MULTI-USE TRAIL
 ROAD CLOSURE



NOTE:
 These design documents are prepared solely for the use by the party with whom the design professional has entered into a contract and there are no representations of any kind made by the design professional to any party with whom the design professional has not entered into a contract.

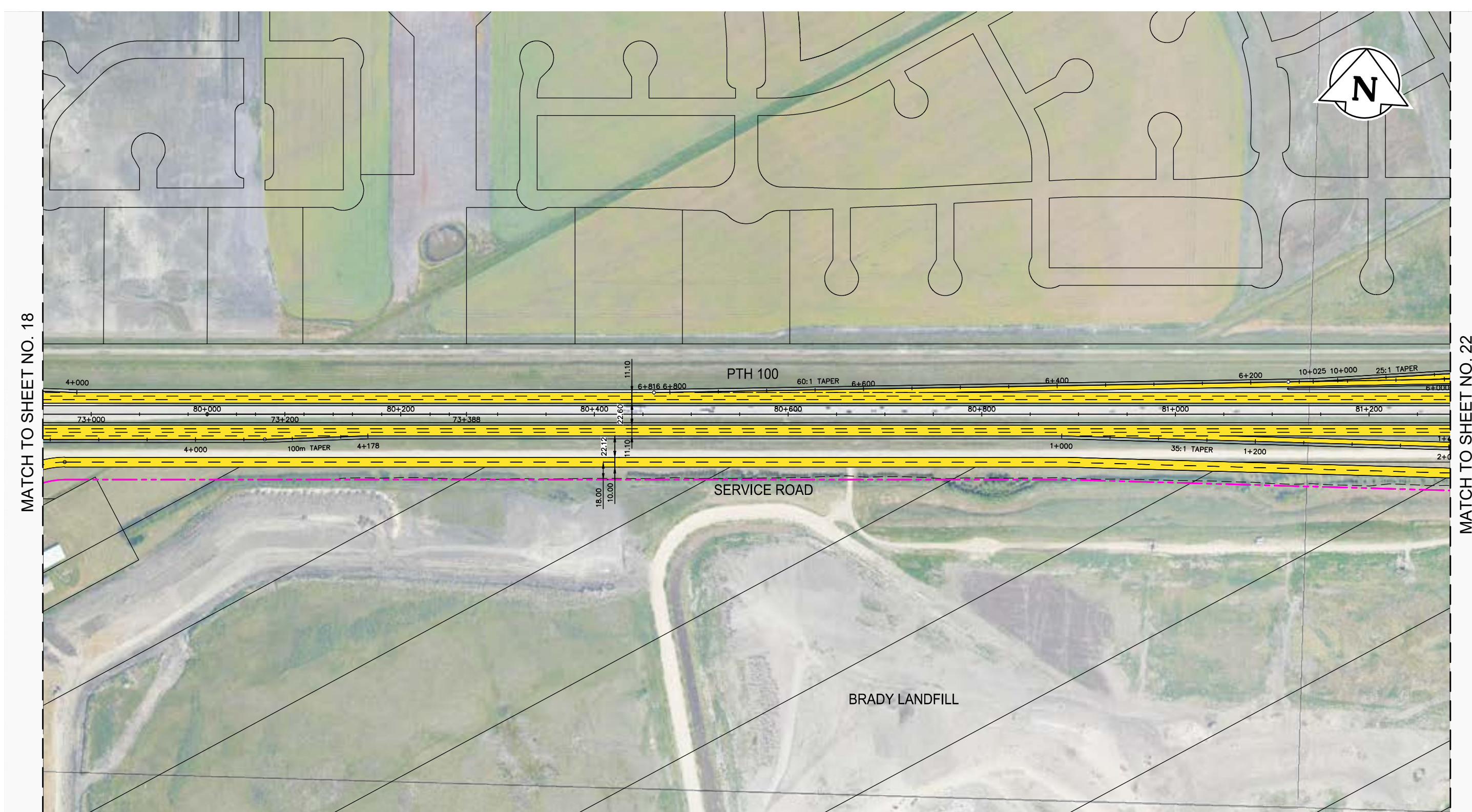
METRIC
 ALL MEASUREMENTS METRES,
 UNLESS STATED OTHERWISE



WSP Canada Group Limited
 Suite 111 - 93 Lombard Ave
 Winnipeg, MB R3B 3B1
 t. 204.943.3178
 f. 204.943.4948
 www.wsp.com

MANITOBA INFRASTRUCTURE
SOUTH PERIMETER HIGHWAY DESIGN STUDY
ULTIMATE STAGE PLANS
PR 330 SOUTH OF PTH 100

SCALE: 1:4000	DATE: 20-06-26	DWG. No. ULT-100-A	SHEET. No. 20 OF 44
------------------	-------------------	-----------------------	------------------------



MATCH TO SHEET NO. 18

MATCH TO SHEET NO. 22

LEGEND-PLAN:

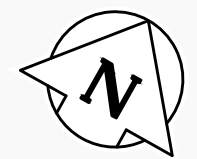
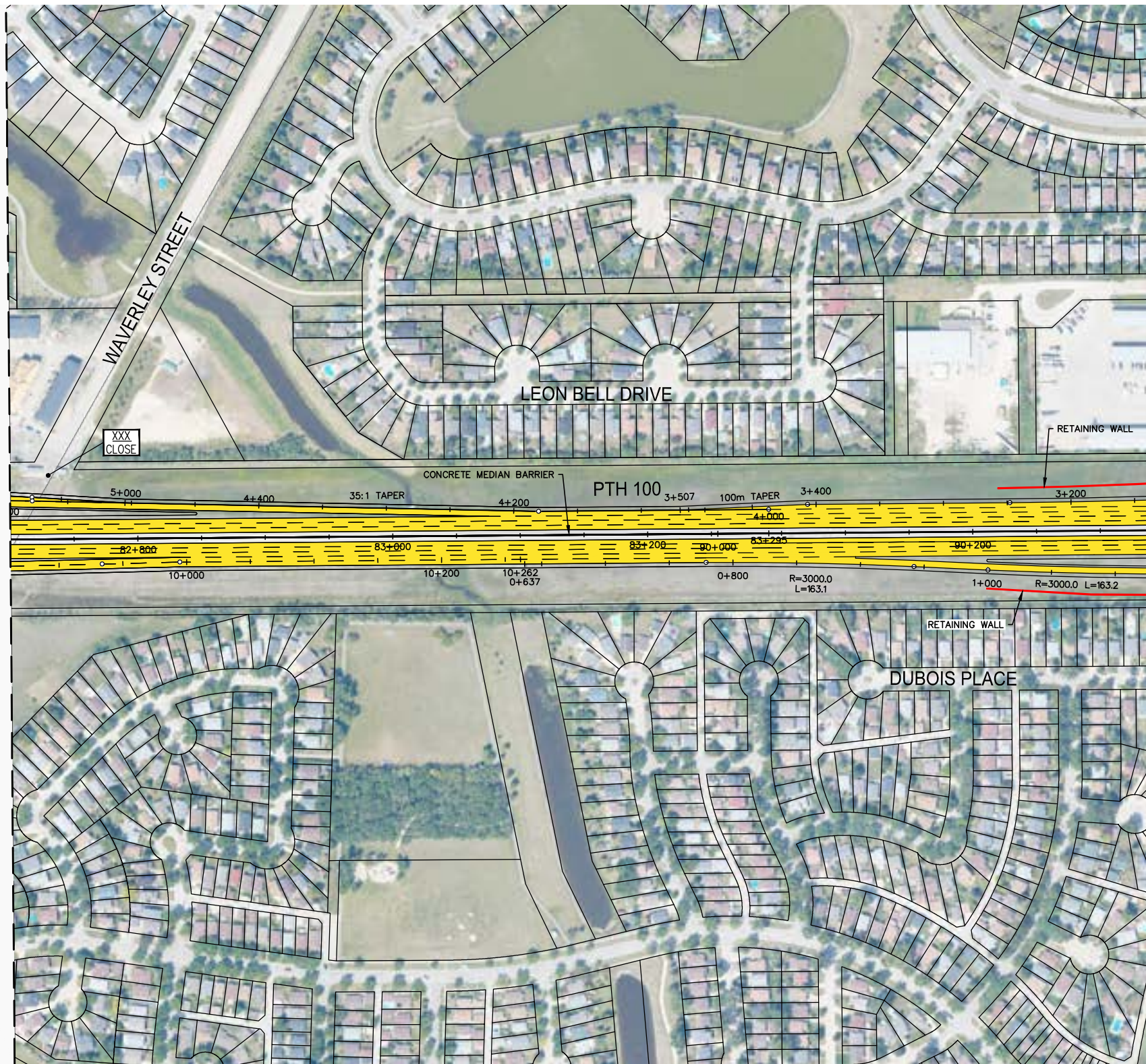
- EXISTING PROPERTY LINE
- PROPOSED PROPERTY LINE
- RETAINING WALL
- RAIL
- PROPOSED ROADWAY
- MULTI-USE TRAIL
- ROAD CLOSURE XXX
CLOSE

NOTE:
These design documents are prepared solely for the use by the party with whom the design professional has entered into a contract and there are no representations of any kind made by the design professional to any party with whom the design professional has not entered into a contract.

METRIC
ALL MEASUREMENTS METRES,
UNLESS STATED OTHERWISE

	WSP Canada Group Limited Suite 111 - 93 Lombard Ave Winnipeg, MB R3B 3B1 t. 204.943.3178 f. 204.943.4948 www.wsp.com		MANITOBA INFRASTRUCTURE SOUTH PERIMETER HIGHWAY DESIGN STUDY ULTIMATE STAGE PLANS PTH 100	
	SCALE: 1:4000	DATE: 20-06-26	DWG. No. ULT-100-A	SHEET. No. 21 OF 44

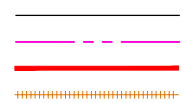
MATCH TO SHEET NO. 22



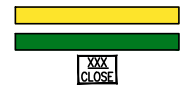
MATCH TO SHEET NO. 24

LEGEND-PLAN:

EXISTING PROPERTY LINE
 PROPOSED PROPERTY LINE
 RETAINING WALL
 RAIL



PROPOSED ROADWAY
 MULTI-USE TRAIL
 ROAD CLOSURE



NOTE:
 These design documents are prepared solely for the use by the party with whom the design professional has entered into a contract and there are no representations of any kind made by the design professional to any party with whom the design professional has not entered into a contract.

METRIC
 ALL MEASUREMENTS METRES,
 UNLESS STATED OTHERWISE



WSP Canada Group Limited
 Suite 111 - 93 Lombard Ave
 Winnipeg, MB R3B 3B1
 t. 204.943.3178
 f. 204.943.4948
 www.wsp.com

MANITOBA INFRASTRUCTURE
SOUTH PERIMETER HIGHWAY DESIGN STUDY
ULTIMATE STAGE PLANS
PTH 100

SCALE: 1:4000	DATE: 20-06-26	DWG. No. ULT-100-A	SHEET. No. 23 OF 44
------------------	-------------------	-----------------------	------------------------