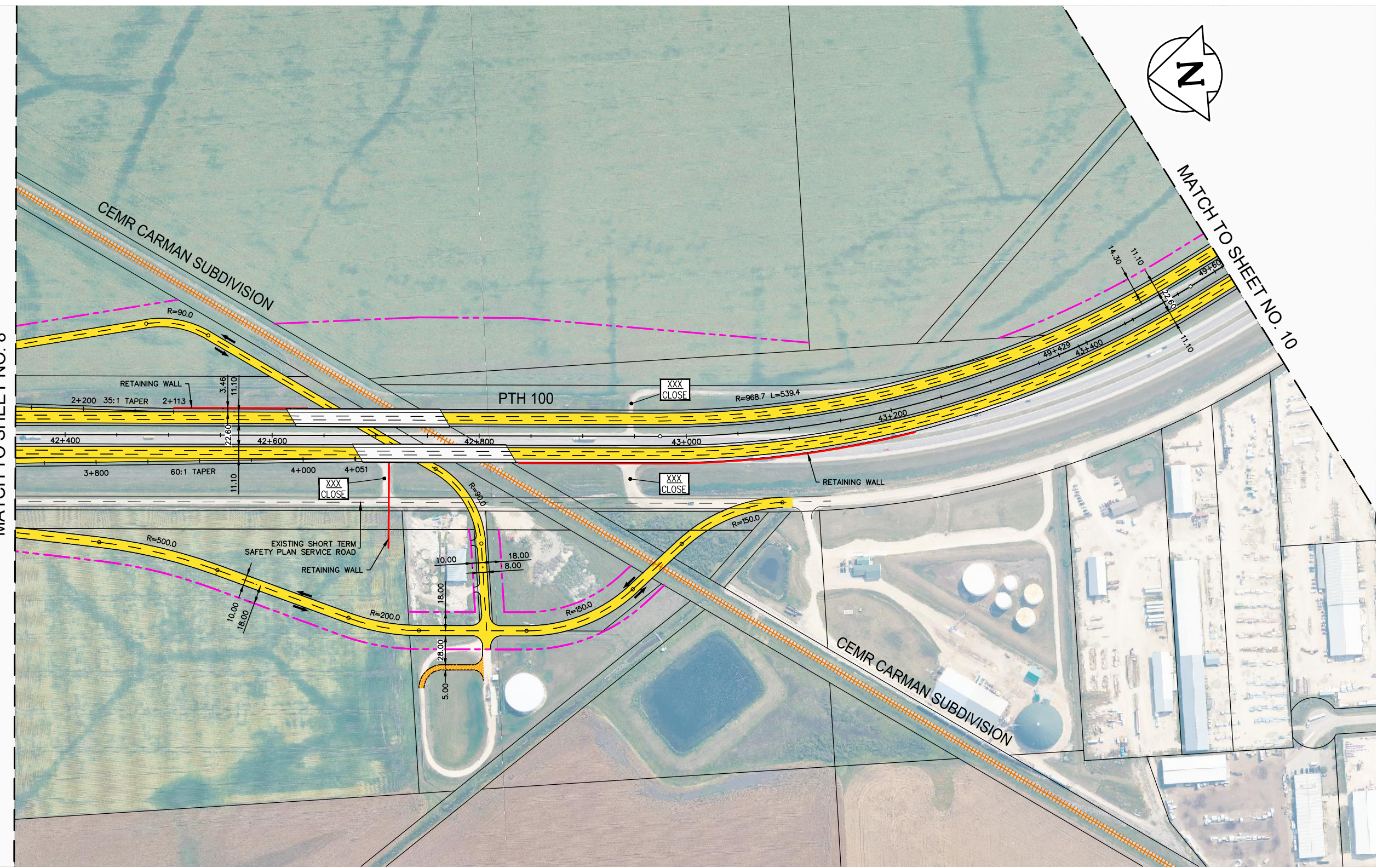




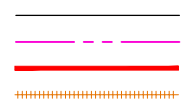
MATCH TO SHEET NO. 8

MATCH TO SHEET NO. 10

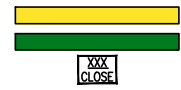


LEGEND-PLAN:

EXISTING PROPERTY LINE
PROPOSED PROPERTY LINE
RETAINING WALL
RAIL



PROPOSED ROADWAY
MULTI-USE TRAIL
ROAD CLOSURE



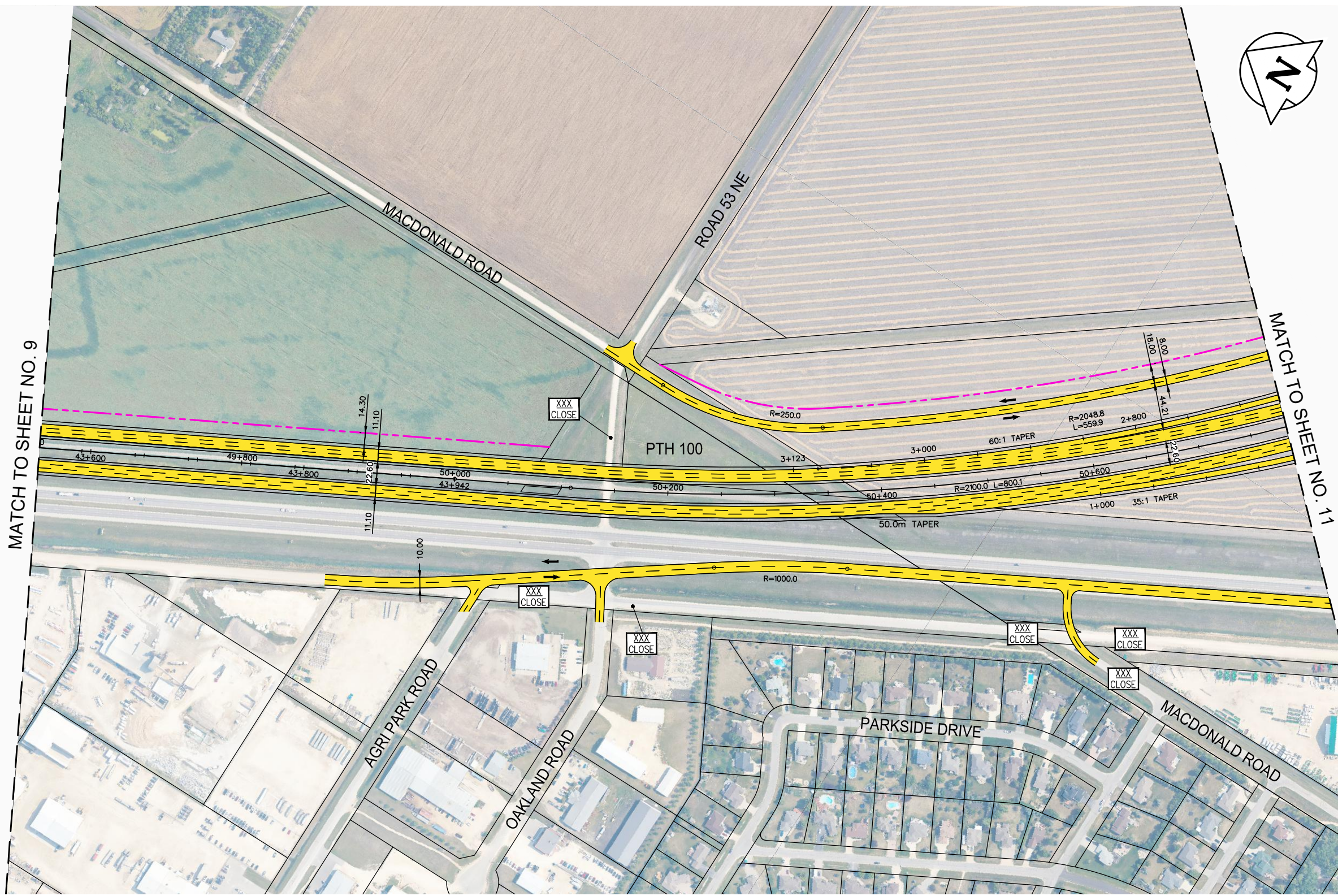
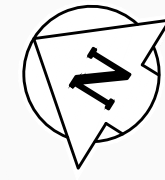
NOTE:
These design documents are prepared solely for the use by the party with whom the design professional has entered into a contract and there are no representations of any kind made by the design professional to any party with whom the design professional has not entered into a contract.

METRIC
ALL MEASUREMENTS METRES,
UNLESS STATED OTHERWISE



WSP Canada Group Limited
Suite 111 - 93 Lombard Ave
Winnipeg, MB R3B 3B1
t. 204.943.3178
f. 204.943.4948
www.wsp.com

MANITOBA INFRASTRUCTURE			
SOUTH PERIMETER HIGHWAY DESIGN STUDY			
ULTIMATE STAGE PLANS			
PTH 100 AT CEMR CARMAN			
SCALE: 1:4000	DATE: 20-06-26	DWG. No. ULT-100-A	SHEET. No. 9 OF 44

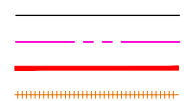


MATCH TO SHEET NO. 9

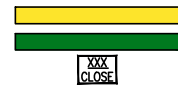
MATCH TO SHEET NO. 11

LEGEND-PLAN:

EXISTING PROPERTY LINE
 PROPOSED PROPERTY LINE
 RETAINING WALL
 RAIL



PROPOSED ROADWAY
 MULTI-USE TRAIL
 ROAD CLOSURE



NOTE:
 These design documents are prepared solely for the use by the party with whom the design professional has entered into a contract and there are no representations of any kind made by the design professional to any party with whom the design professional has not entered into a contract.

METRIC
 ALL MEASUREMENTS METRES,
 UNLESS STATED OTHERWISE



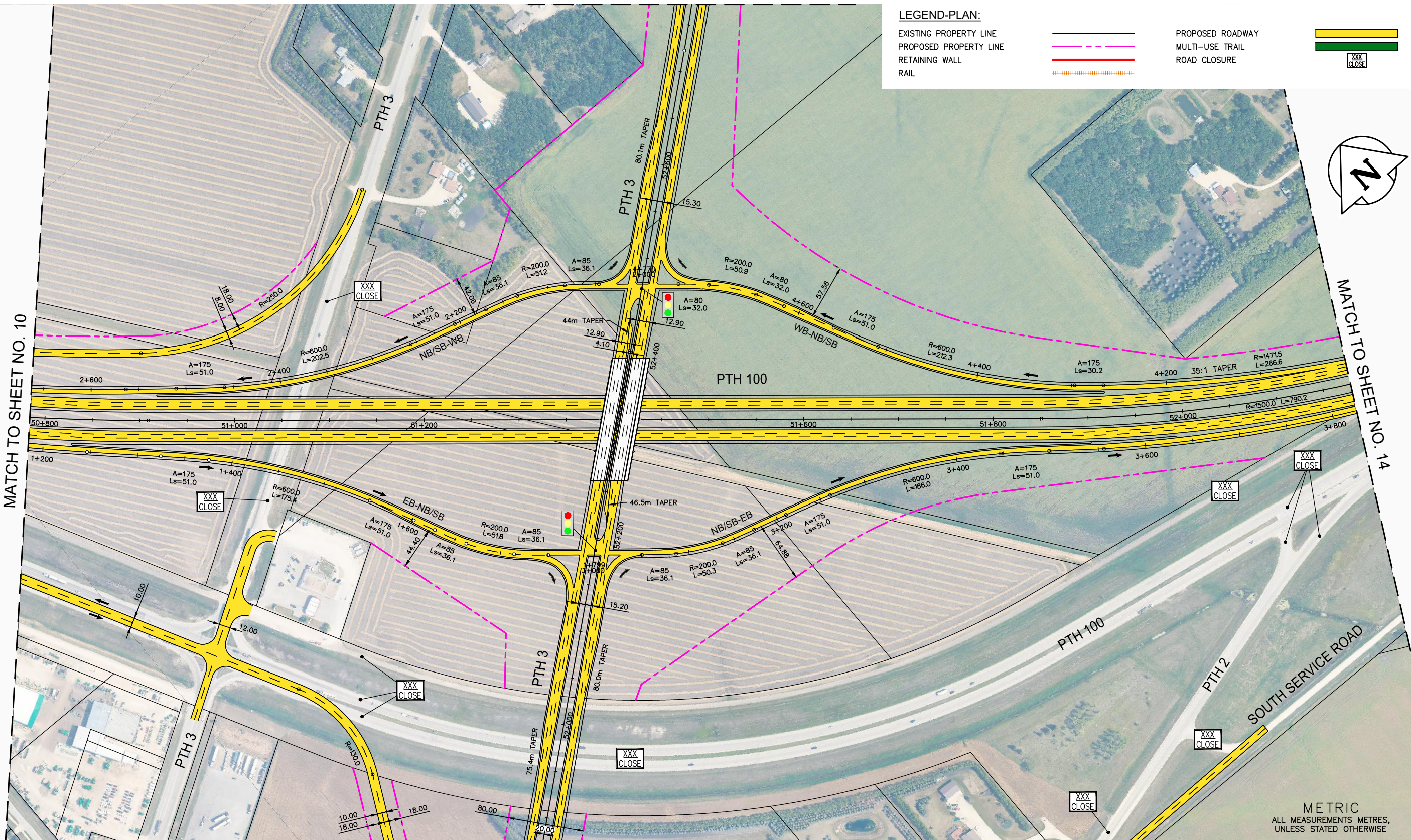
WSP Canada Group Limited
 Suite 111 - 93 Lombard Ave
 Winnipeg, MB R3B 3B1
 t. 204.943.3178
 f. 204.943.4948
 www.wsp.com

MANITOBA INFRASTRUCTURE			
SOUTH PERIMETER HIGHWAY DESIGN STUDY			
ULTIMATE STAGE PLANS			
PTH 100			
SCALE:	DATE:	DWG. No.	SHEET. No.
1:4000	20-06-26	ULT-100-A	10 OF 44

MATCH TO SHEET NO. 13

LEGEND-PLAN:

- EXISTING PROPERTY LINE
- PROPOSED PROPERTY LINE
- RETAINING WALL
- RAIL
- PROPOSED ROADWAY
- MULTI-USE TRAIL
- ROAD CLOSURE XXX
CLOSE



MATCH TO SHEET NO. 10

MATCH TO SHEET NO. 14

MATCH TO SHEET NO. 12

METRIC
ALL MEASUREMENTS METRES,
UNLESS STATED OTHERWISE

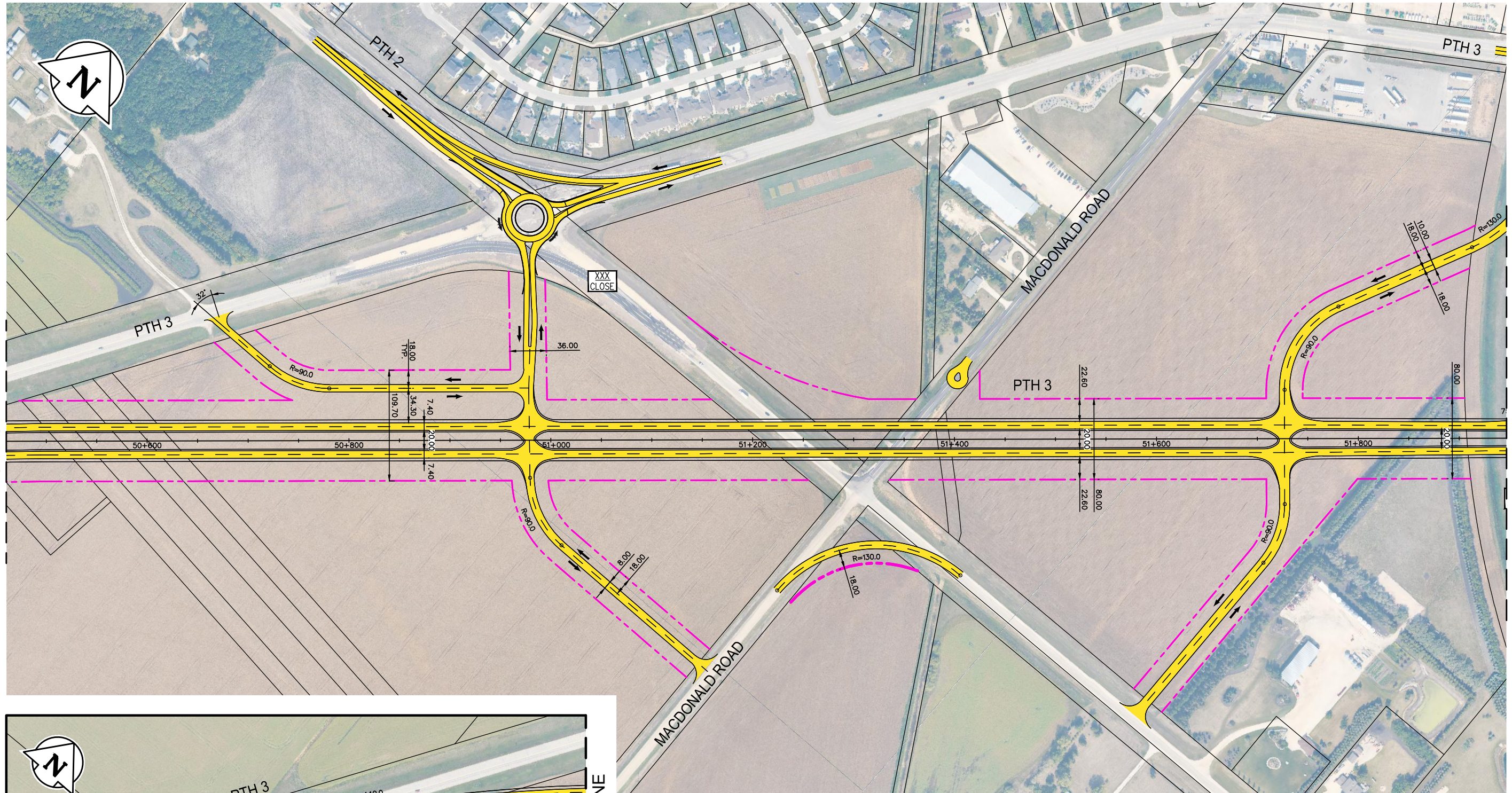


WSP Canada Group Limited
Suite 111 - 93 Lombard Ave
Winnipeg, MB R3B 3B1
t. 204.943.3178
f. 204.943.4948
www.wsp.com

MANITOBA INFRASTRUCTURE
SOUTH PERIMETER HIGHWAY DESIGN STUDY
ULTIMATE STAGE PLANS
PTH 100 AT PTH 3

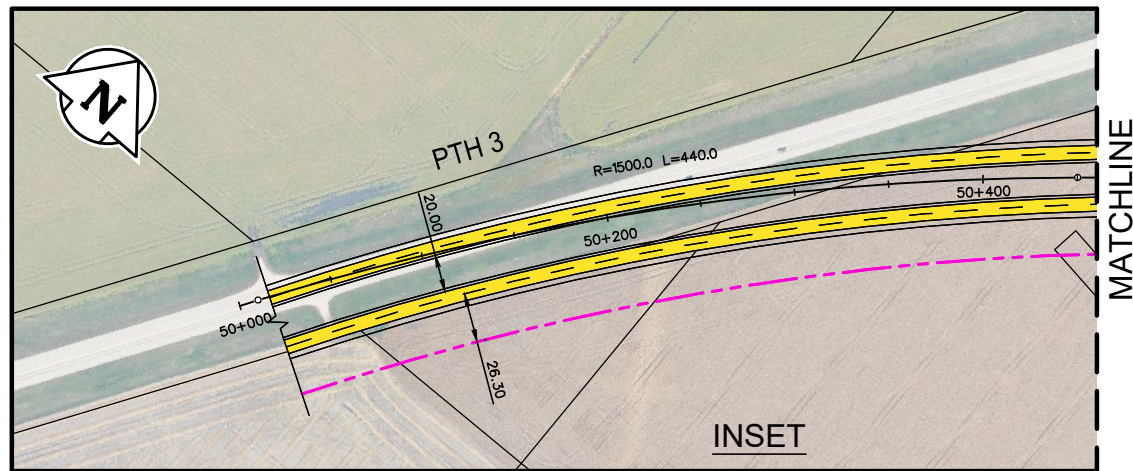
NOTE:
These design documents are prepared solely for the use by the party with whom the design professional has entered into a contract and there are no representations of any kind made by the design professional to any party with whom the design professional has not entered into a contract.

SCALE: 1:4000	DATE: 20-06-26	DWG. No. ULT-100-A	SHEET. No. 11 OF 44
------------------	-------------------	-----------------------	------------------------



MATCH TO INSET

MATCH TO SHEET NO. 11



MATCHLINE

INSET

METRIC
ALL MEASUREMENTS METRES,
UNLESS STATED OTHERWISE

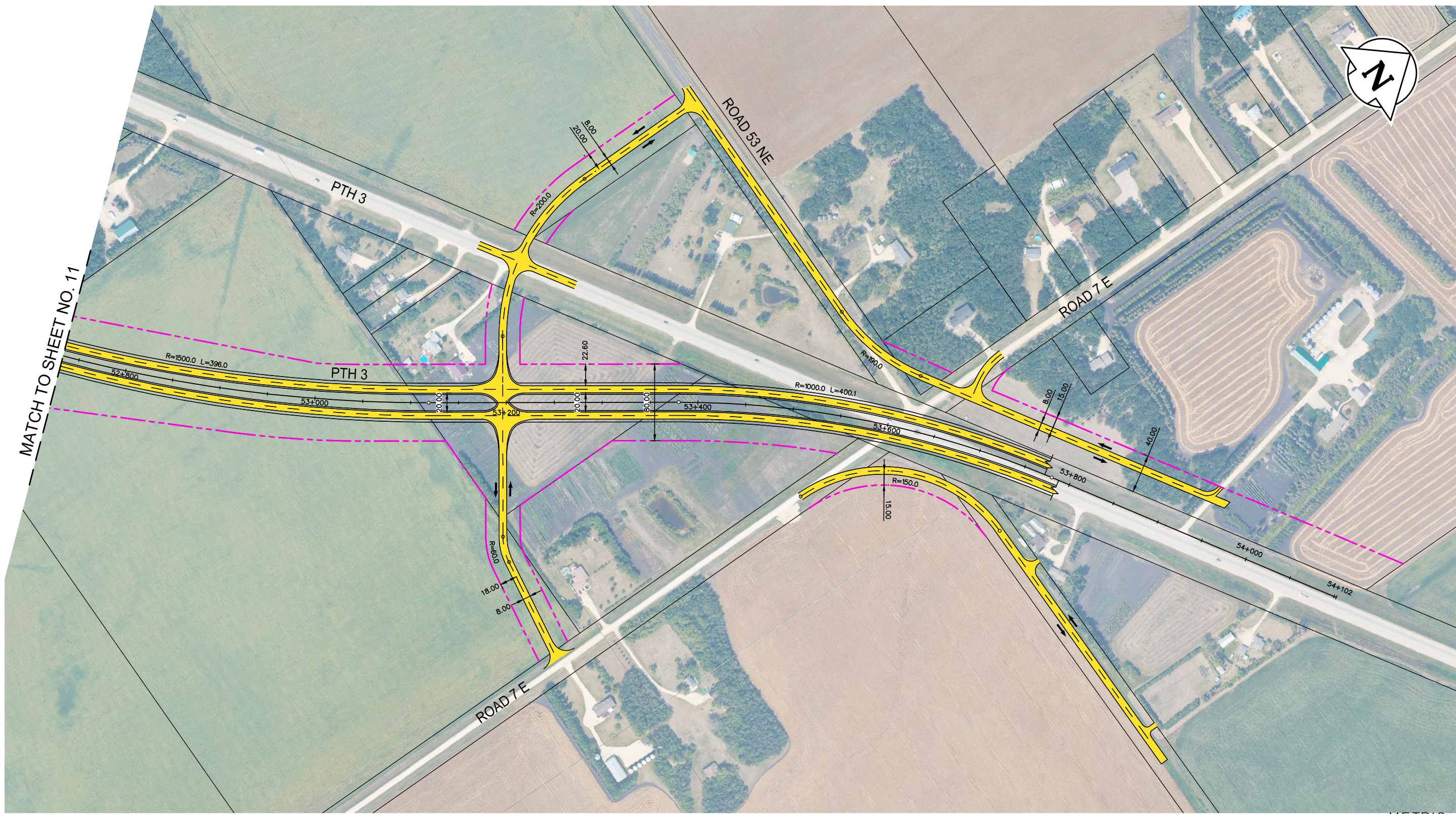
LEGEND-PLAN:

- EXISTING PROPERTY LINE
- PROPOSED PROPERTY LINE
- RETAINING WALL
- RAIL
- PROPOSED ROADWAY
- MULTI-USE TRAIL
- ROAD CLOSURE
- XXX CLOSE XXX
CLOSE

NOTE:
These design documents are prepared solely for the use by the party with whom the design professional has entered into a contract and there are no representations of any kind made by the design professional to any party with whom the design professional has not entered into a contract.

WSP Canada Group Limited
 Suite 111 - 93 Lombard Ave
 Winnipeg, MB R3B 3B1
 t. 204.943.3178
 f. 204.943.4948
 www.wsp.com

MANITOBA INFRASTRUCTURE SOUTH PERIMETER HIGHWAY DESIGN STUDY ULTIMATE STAGE PLANS PTH 3 SOUTH OF PTH 100			
SCALE:	DATE:	DWG. No.	SHEET. No.
1:4000	20-06-26	ULT-100-A	12 OF 44



MATCH TO SHEET NO. 11



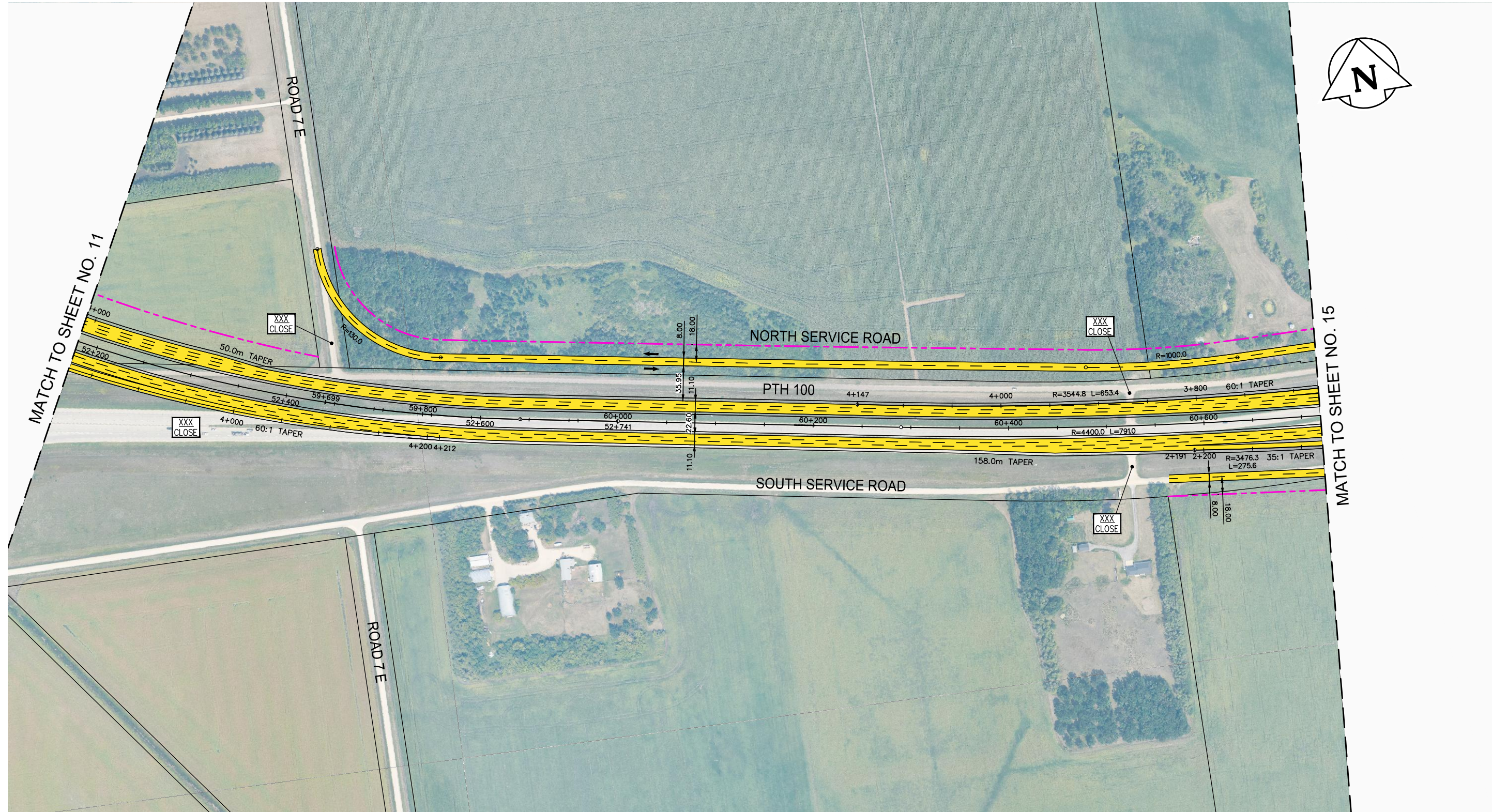
LEGEND-PLAN:

- EXISTING PROPERTY LINE
- PROPOSED ROADWAY
- RETAINING WALL
- RAIL
- PROPOSED MULTI-USE TRAIL
- ROAD CLOSURE
-
- XX CLOSE

METRIC
ALL MEASUREMENTS METRES,
UNLESS STATED OTHERWISE

NOTE:
These design documents are prepared solely for the use by the party with whom the design professional has entered into a contract and there are no representations of any kind made by the design professional to any party with whom the design professional has not entered into a contract.

	WSP Canada Group Limited Suite 111 - 93 Lombard Ave Winnipeg, MB R3B 3B1 t. 204.943.3178 f. 204.943.4948 www.wsp.com		MANITOBA INFRASTRUCTURE SOUTH PERIMETER HIGHWAY DESIGN STUDY ULTIMATE STAGE PLANS PTH 3 NORTH OF PTH 100	
	SCALE: 1:4000	DATE: 20-06-26	DWG. No. ULT-100-A	SHEET. No. 13 OF 44



LEGEND-PLAN:

- EXISTING PROPERTY LINE
- PROPOSED PROPERTY LINE
- RETAINING WALL
- RAIL
- PROPOSED ROADWAY
- MULTI-USE TRAIL
- ROAD CLOSURE XXX
CLOSE

NOTE:
These design documents are prepared solely for the use by the party with whom the design professional has entered into a contract and there are no representations of any kind made by the design professional to any party with whom the design professional has not entered into a contract.

METRIC
ALL MEASUREMENTS METRES,
UNLESS STATED OTHERWISE

WSP Canada Group Limited
Suite 111 - 93 Lombard Ave
Winnipeg, MB R3B 3B1
t. 204.943.3178
f. 204.943.4948
www.wsp.com

MANITOBA INFRASTRUCTURE			
SOUTH PERIMETER HIGHWAY DESIGN STUDY			
ULTIMATE STAGE PLANS			
PTH 100			
SCALE: 1:4000	DATE: 20-06-26	DWG. No. ULT-100-A	SHEET. No. 14 OF 44