

MATCH TO SHEET NO. 2

METRIC
ALL MEASUREMENTS - METRES,
UNLESS STATED OTHERWISE

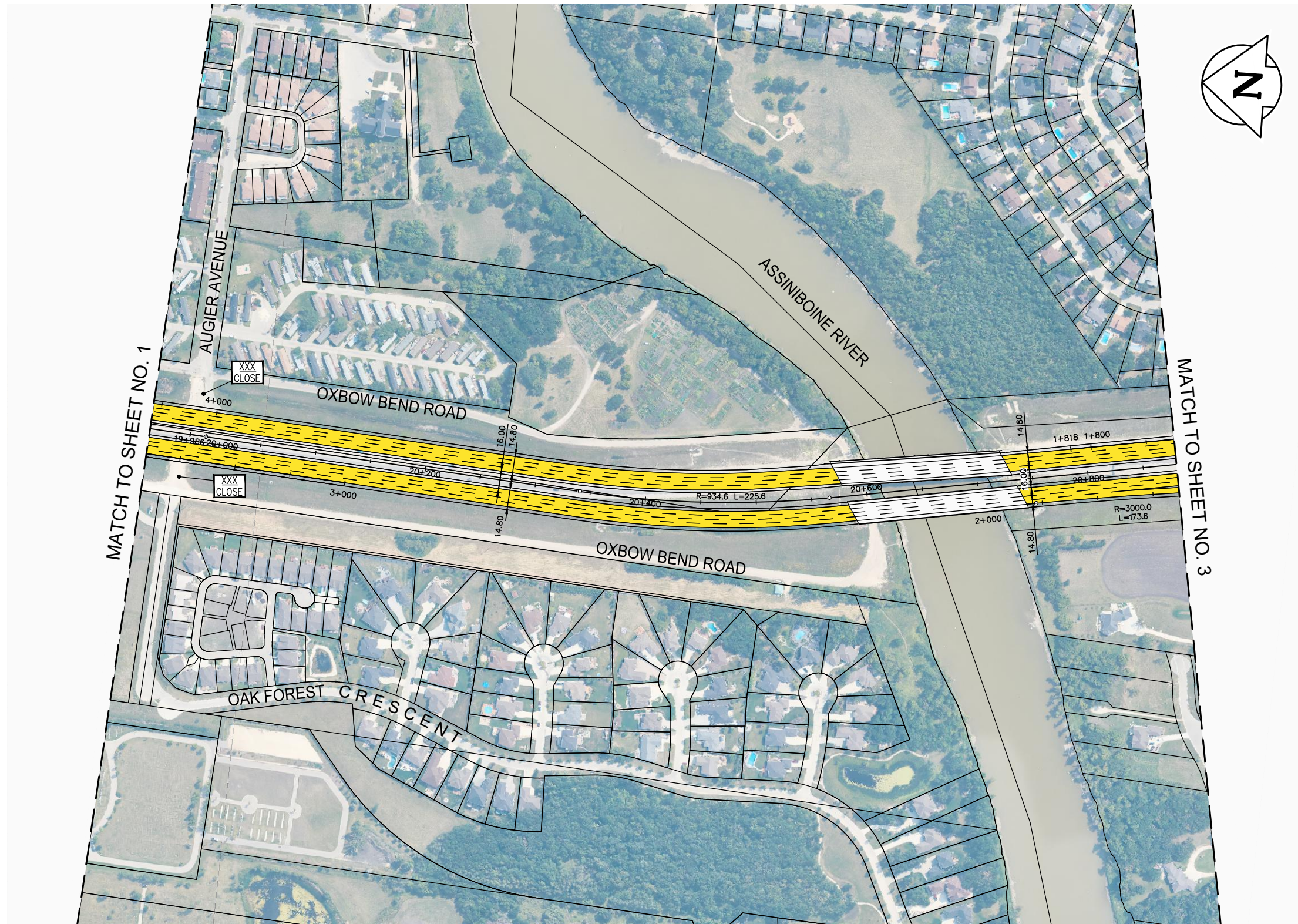
LEGEND-PLAN:

- | | | | |
|------------------------|--|------------------|--|
| EXISTING PROPERTY LINE | | PROPOSED ROADWAY | |
| PROPOSED PROPERTY LINE | | MULTI-USE TRAIL | |
| RETAINING WALL | | ROAD CLOSURE | |
| RAIL | | | |

NOTE:
These design documents are prepared solely for the use by the party with whom the design professional has entered into a contract and there are no representations of any kind made by the design professional to any party with whom the design professional has not entered into a contract.

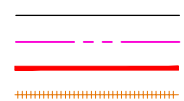
WSP Canada Group Limited
Suite 111 - 93 Lombard Ave
Winnipeg, MB R3B 3B1
t. 204.943.3178
f. 204.943.4948
www.wsp.com

MANITOBA INFRASTRUCTURE			
SOUTH PERIMETER HIGHWAY DESIGN STUDY			
ULTIMATE STAGE PLANS			
PTH 100 AT PORTAGE AVENUE			
SCALE:	DATE:	DWG. No.	SHEET. No.
1:4000	20-06-26	ULT-100-A	1 OF 44

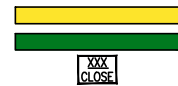


LEGEND-PLAN:

EXISTING PROPERTY LINE
 PROPOSED PROPERTY LINE
 RETAINING WALL
 RAIL



PROPOSED ROADWAY
 MULTI-USE TRAIL
 ROAD CLOSURE



NOTE:
 These design documents are prepared solely for the use by the party with whom the design professional has entered into a contract and there are no representations of any kind made by the design professional to any party with whom the design professional has not entered into a contract.

METRIC
 ALL MEASUREMENTS METRES,
 UNLESS STATED OTHERWISE



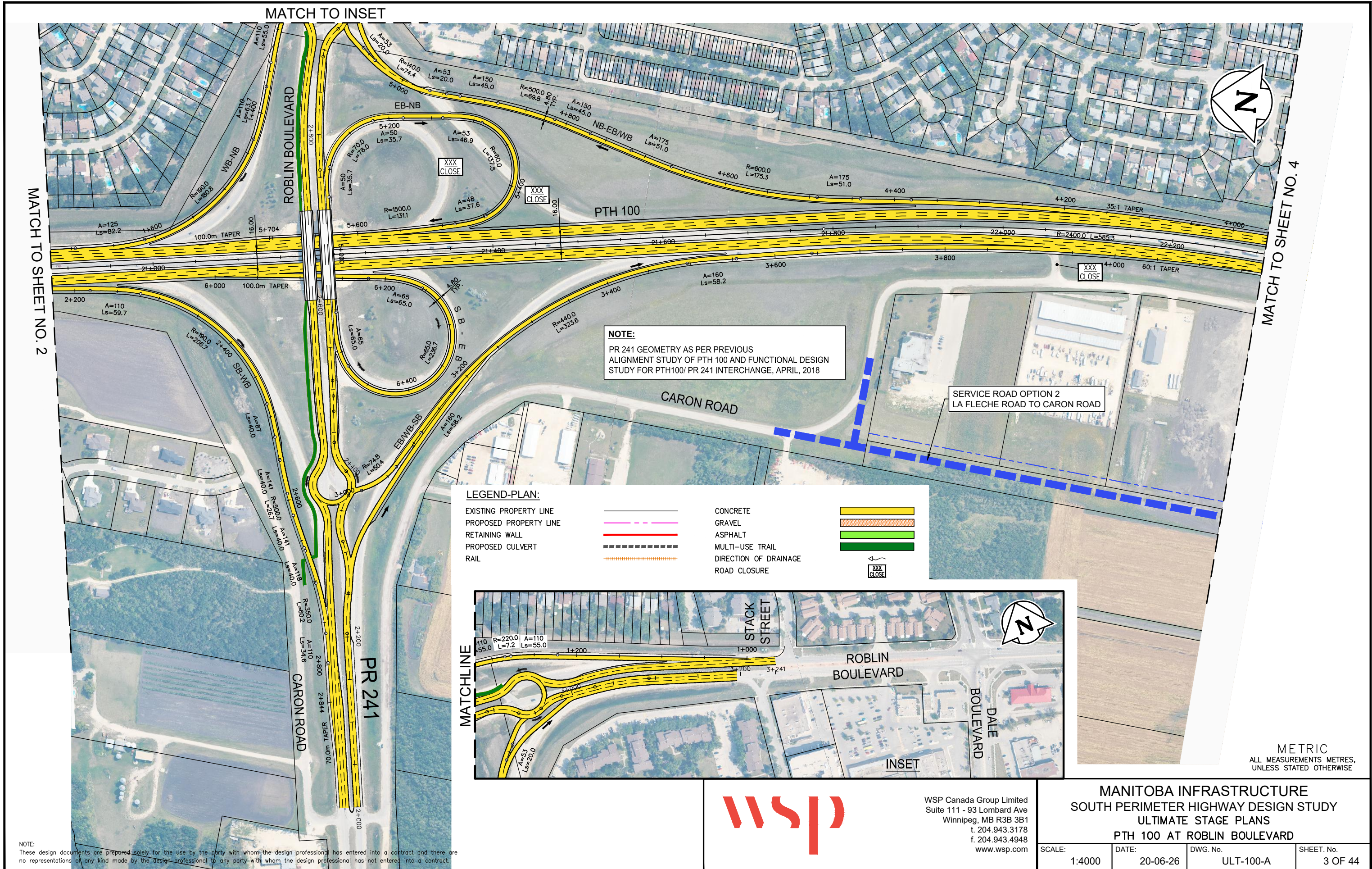
WSP Canada Group Limited
 Suite 111 - 93 Lombard Ave
 Winnipeg, MB R3B 3B1
 t. 204.943.3178
 f. 204.943.4948
 www.wsp.com

MANITOBA INFRASTRUCTURE			
SOUTH PERIMETER HIGHWAY DESIGN STUDY			
ULTIMATE STAGE PLANS			
PTH 100			
SCALE: 1:4000	DATE: 20-06-26	DWG. No. ULT-100-A	SHEET. No. 2 OF 44

MATCH TO INSET

MATCH TO SHEET NO. 2

MATCH TO SHEET NO. 4

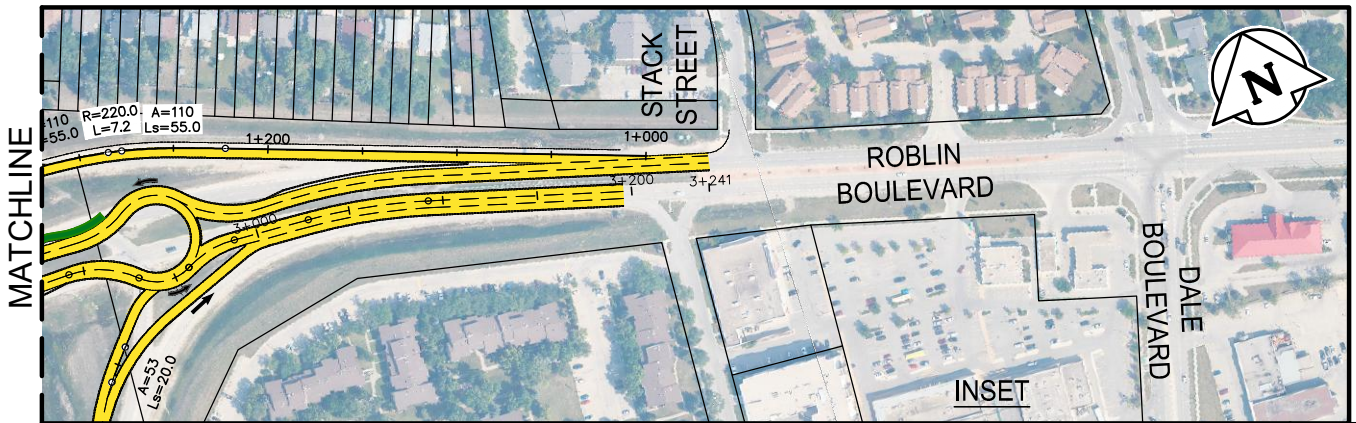


NOTE:
 PR 241 GEOMETRY AS PER PREVIOUS
 ALIGNMENT STUDY OF PTH 100 AND FUNCTIONAL DESIGN
 STUDY FOR PTH100/ PR 241 INTERCHANGE, APRIL, 2018

SERVICE ROAD OPTION 2
 LA FLECHE ROAD TO CARON ROAD

LEGEND-PLAN:

EXISTING PROPERTY LINE		CONCRETE	
PROPOSED PROPERTY LINE		GRAVEL	
RETAINING WALL		ASPHALT	
PROPOSED CULVERT		MULTI-USE TRAIL	
RAIL		DIRECTION OF DRAINAGE	
		ROAD CLOSURE	



METRIC
 ALL MEASUREMENTS METRES,
 UNLESS STATED OTHERWISE

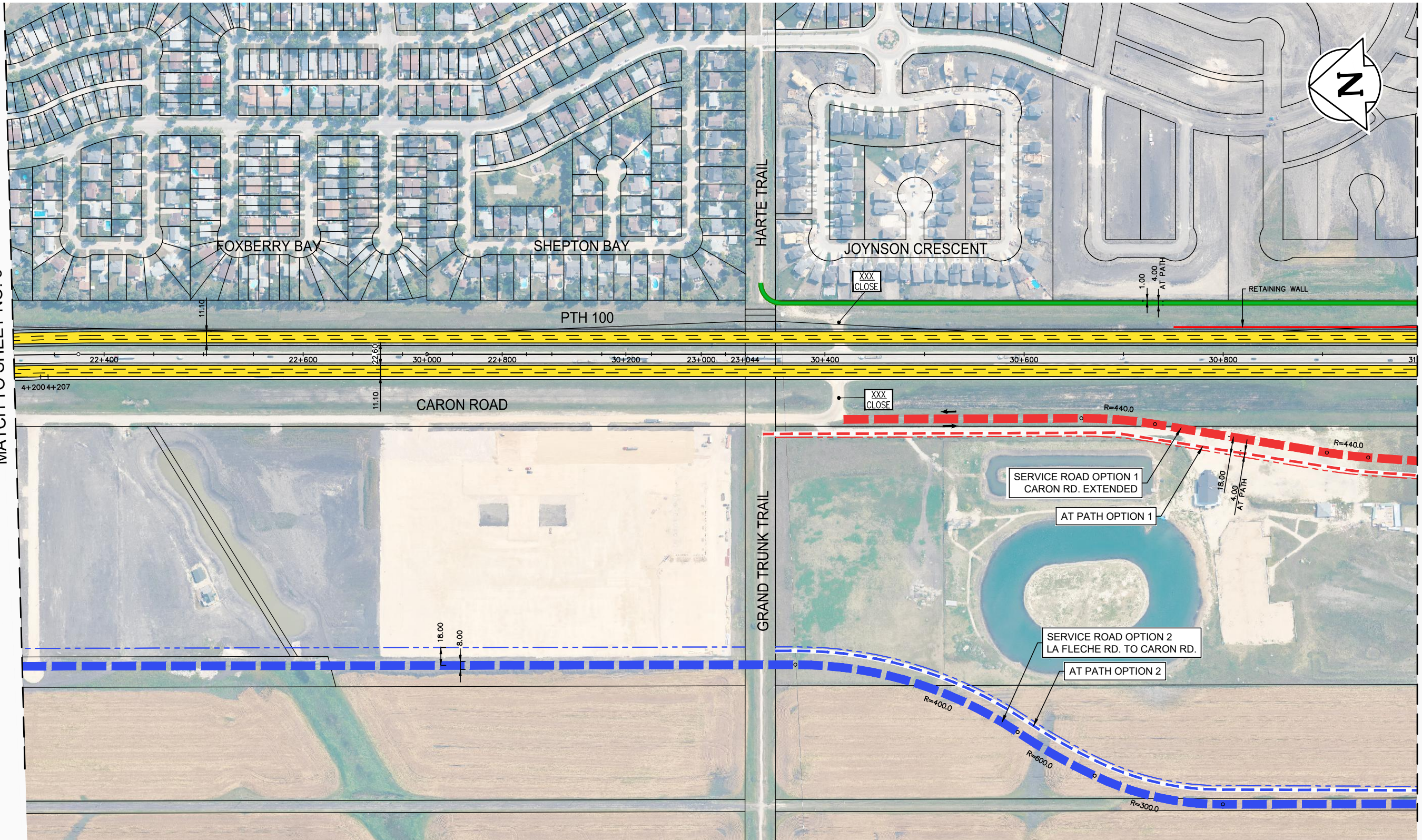
NOTE:
 These design documents are prepared solely for the use by the party with whom the design professional has entered into a contract and there are no representations of any kind made by the design professional to any party with whom the design professional has not entered into a contract.



WSP Canada Group Limited
 Suite 111 - 93 Lombard Ave
 Winnipeg, MB R3B 3B1
 t. 204.943.3178
 f. 204.943.4948
 www.wsp.com

MANITOBA INFRASTRUCTURE
 SOUTH PERIMETER HIGHWAY DESIGN STUDY
 ULTIMATE STAGE PLANS
 PTH 100 AT ROBLIN BOULEVARD

SCALE: 1:4000	DATE: 20-06-26	DWG. No. ULT-100-A	SHEET. No. 3 OF 44
------------------	-------------------	-----------------------	-----------------------



MATCH TO SHEET NO. 3

MATCH TO SHEET NO. 5

LEGEND-PLAN:

- | | | | |
|------------------------|--|------------------|--|
| EXISTING PROPERTY LINE | | PROPOSED ROADWAY | |
| PROPOSED PROPERTY LINE | | MULTI-USE TRAIL | |
| RETAINING WALL | | ROAD CLOSURE | |
| RAIL | | | |

NOTE:
These design documents are prepared solely for the use by the party with whom the design professional has entered into a contract and there are no representations of any kind made by the design professional to any party with whom the design professional has not entered into a contract.

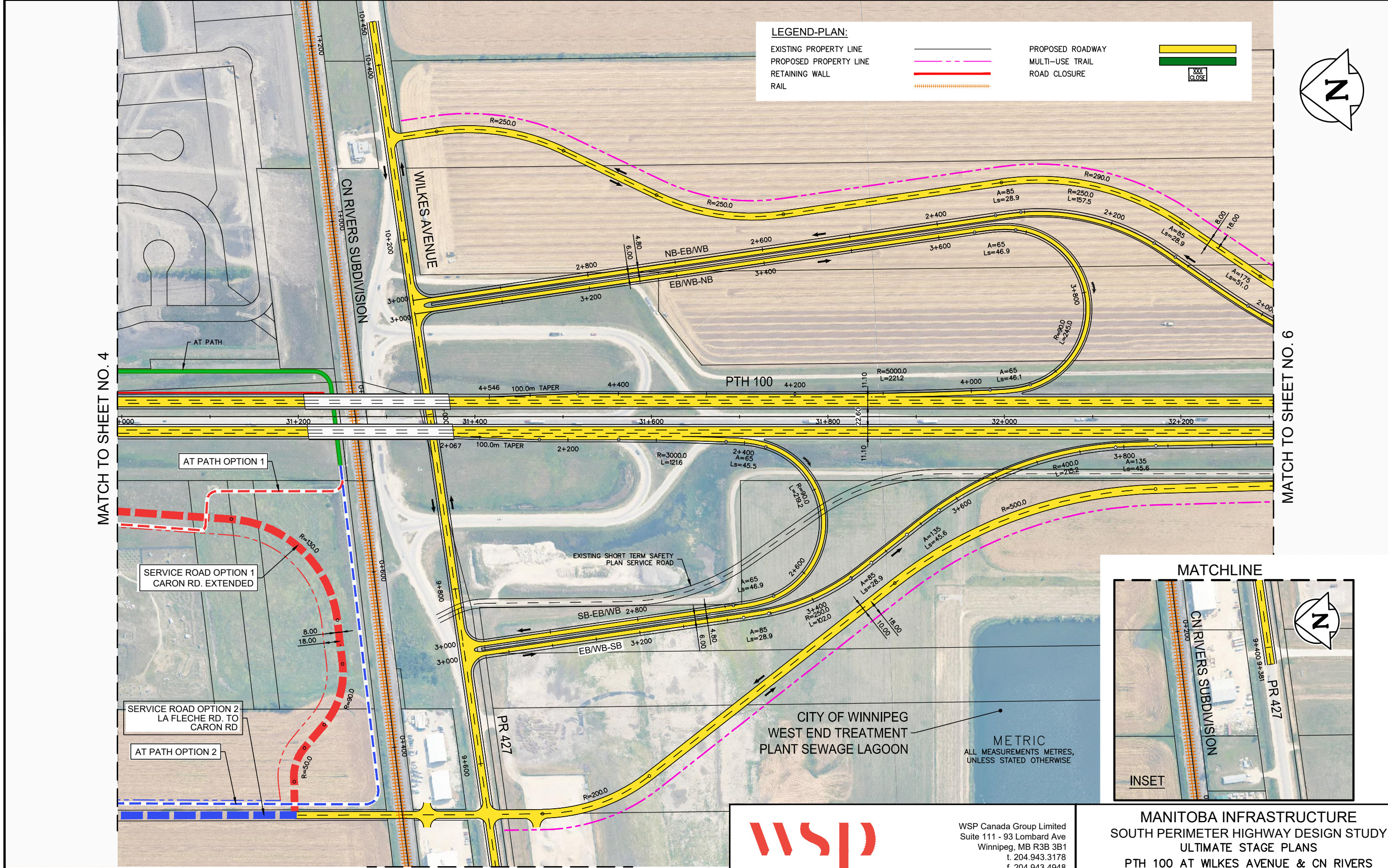
METRIC
ALL MEASUREMENTS METRES,
UNLESS STATED OTHERWISE



WSP Canada Group Limited
Suite 111 - 93 Lombard Ave
Winnipeg, MB R3B 3B1
t. 204.943.3178
f. 204.943.4948
www.wsp.com

MANITOBA INFRASTRUCTURE
SOUTH PERIMETER HIGHWAY DESIGN STUDY
ULTIMATE STAGE PLANS
PTH 100 AT GRAND TRUNK TRAIL

SCALE: 1:4000	DATE: 20-06-26	DWG. No. ULT-100-A	SHEET. No. 4 OF 44
------------------	-------------------	-----------------------	-----------------------

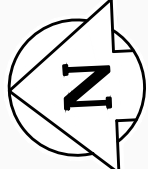


MATCH TO SHEET NO. 4

MATCH TO SHEET NO. 6

LEGEND-PLAN:

- EXISTING PROPERTY LINE (dashed black line)
- PROPOSED PROPERTY LINE (dashed pink line)
- RETAINING WALL (dashed red line)
- RAIL (orange dashed line)
- PROPOSED ROADWAY (yellow double line)
- MULTI-USE TRAIL (green double line)
- ROAD CLOSURE (red double line)



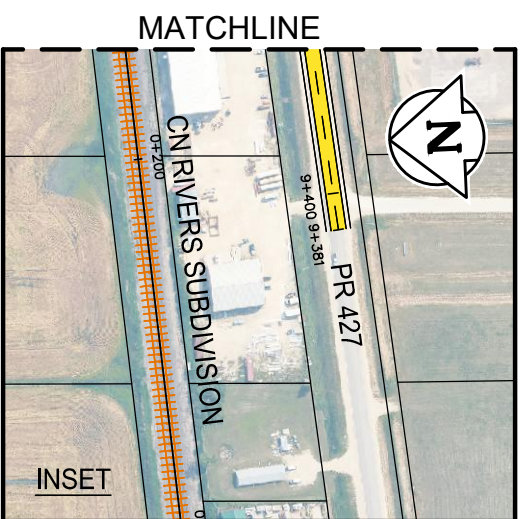
AT PATH

AT PATH OPTION 1

SERVICE ROAD OPTION 1
CARON RD. EXTENDED

SERVICE ROAD OPTION 2
LA FLECHE RD. TO
CARON RD

AT PATH OPTION 2



CITY OF WINNIPEG
WEST END TREATMENT
PLANT SEWAGE LAGOON

METRIC
ALL MEASUREMENTS METRES,
UNLESS STATED OTHERWISE

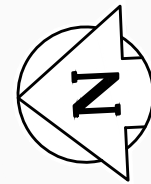
NOTE:
These design documents are prepared solely for the use by the party with whom the design professional has entered into a contract and there are no representations of any kind made by the design professional to any party with whom the design professional has not entered into a contract.

MATCH TO INSET

WSP Canada Group Limited
Suite 111 - 93 Lombard Ave
Winnipeg, MB R3B 3B1
t. 204.943.3178
f. 204.943.4948
www.wsp.com

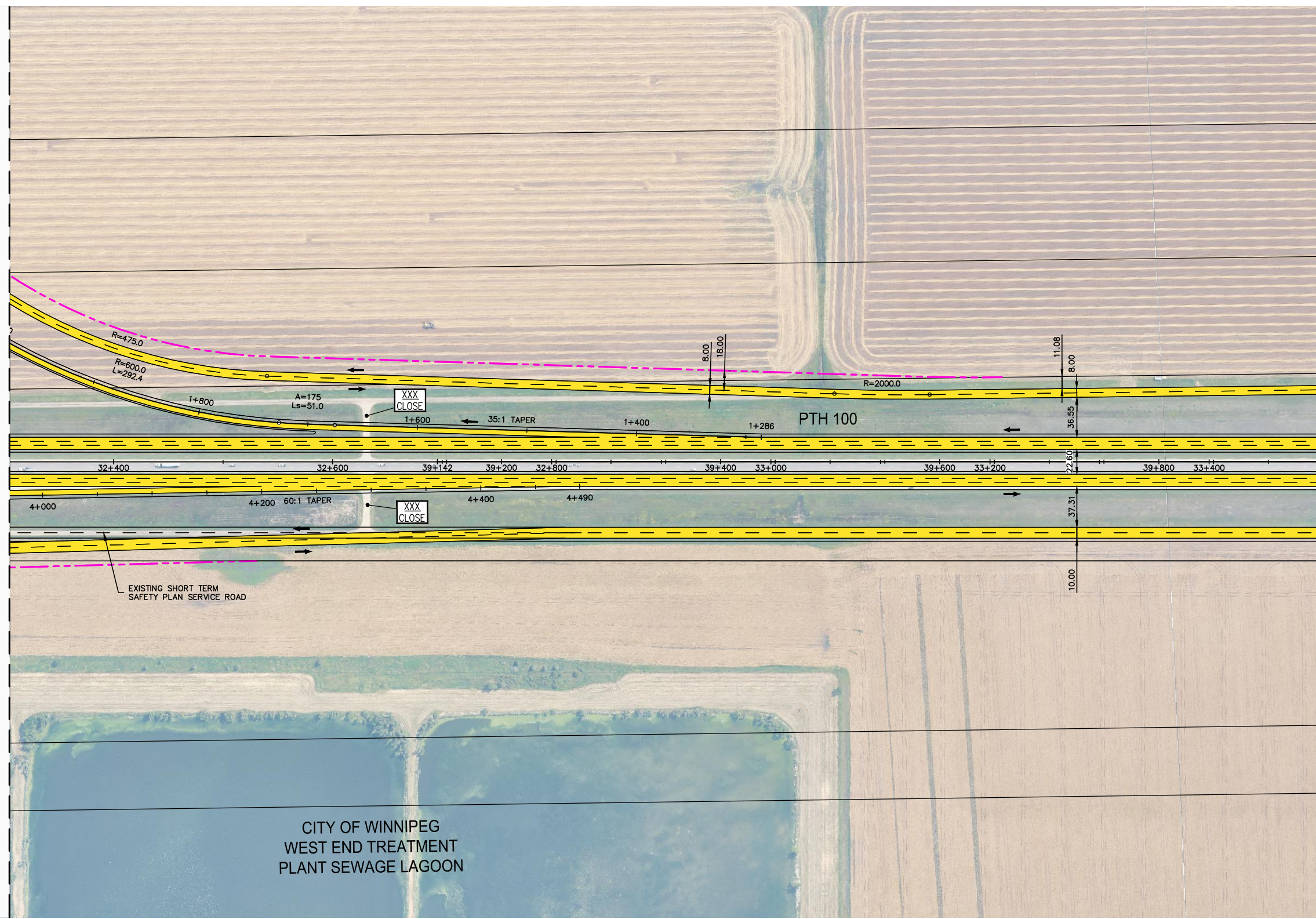
MANITOBA INFRASTRUCTURE
SOUTH PERIMETER HIGHWAY DESIGN STUDY
ULTIMATE STAGE PLANS
PTH 100 AT WILKES AVENUE & CN RIVERS

SCALE: 1:4000	DATE: 20-06-26	DWG. No. ULT-100-A	SHEET. No. 5 OF 44
------------------	-------------------	-----------------------	-----------------------



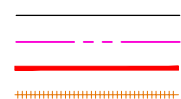
MATCH TO SHEET NO. 5

MATCH TO SHEET NO. 7

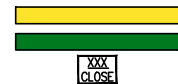


LEGEND-PLAN:

EXISTING PROPERTY LINE
 PROPOSED PROPERTY LINE
 RETAINING WALL
 RAIL



PROPOSED ROADWAY
 MULTI-USE TRAIL
 ROAD CLOSURE



NOTE:
 These design documents are prepared solely for the use by the party with whom the design professional has entered into a contract and there are no representations of any kind made by the design professional to any party with whom the design professional has not entered into a contract.

METRIC
 ALL MEASUREMENTS METRES,
 UNLESS STATED OTHERWISE



WSP Canada Group Limited
 Suite 111 - 93 Lombard Ave
 Winnipeg, MB R3B 3B1
 t. 204.943.3178
 f. 204.943.4948
 www.wsp.com

MANITOBA INFRASTRUCTURE
 SOUTH PERIMETER HIGHWAY DESIGN STUDY
 ULTIMATE STAGE PLANS
 PTH 100

SCALE: 1:4000	DATE: 20-06-26	DWG. No. ULT-100-A	SHEET. No. 6 OF 44
------------------	-------------------	-----------------------	-----------------------



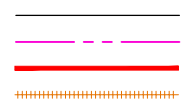
MATCH TO SHEET NO. 6

MATCH TO SHEET NO. 8

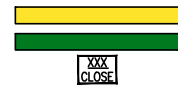


LEGEND-PLAN:

EXISTING PROPERTY LINE
 PROPOSED PROPERTY LINE
 RETAINING WALL
 RAIL



PROPOSED ROADWAY
 MULTI-USE TRAIL
 ROAD CLOSURE



XXX
CLOSE

NOTE:
 These design documents are prepared solely for the use by the party with whom the design professional has entered into a contract and there are no representations of any kind made by the design professional to any party with whom the design professional has not entered into a contract.

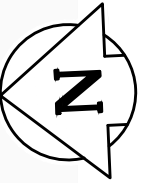
METRIC
 ALL MEASUREMENTS METRES,
 UNLESS STATED OTHERWISE



WSP Canada Group Limited
 Suite 111 - 93 Lombard Ave
 Winnipeg, MB R3B 3B1
 t. 204.943.3178
 f. 204.943.4948
 www.wsp.com

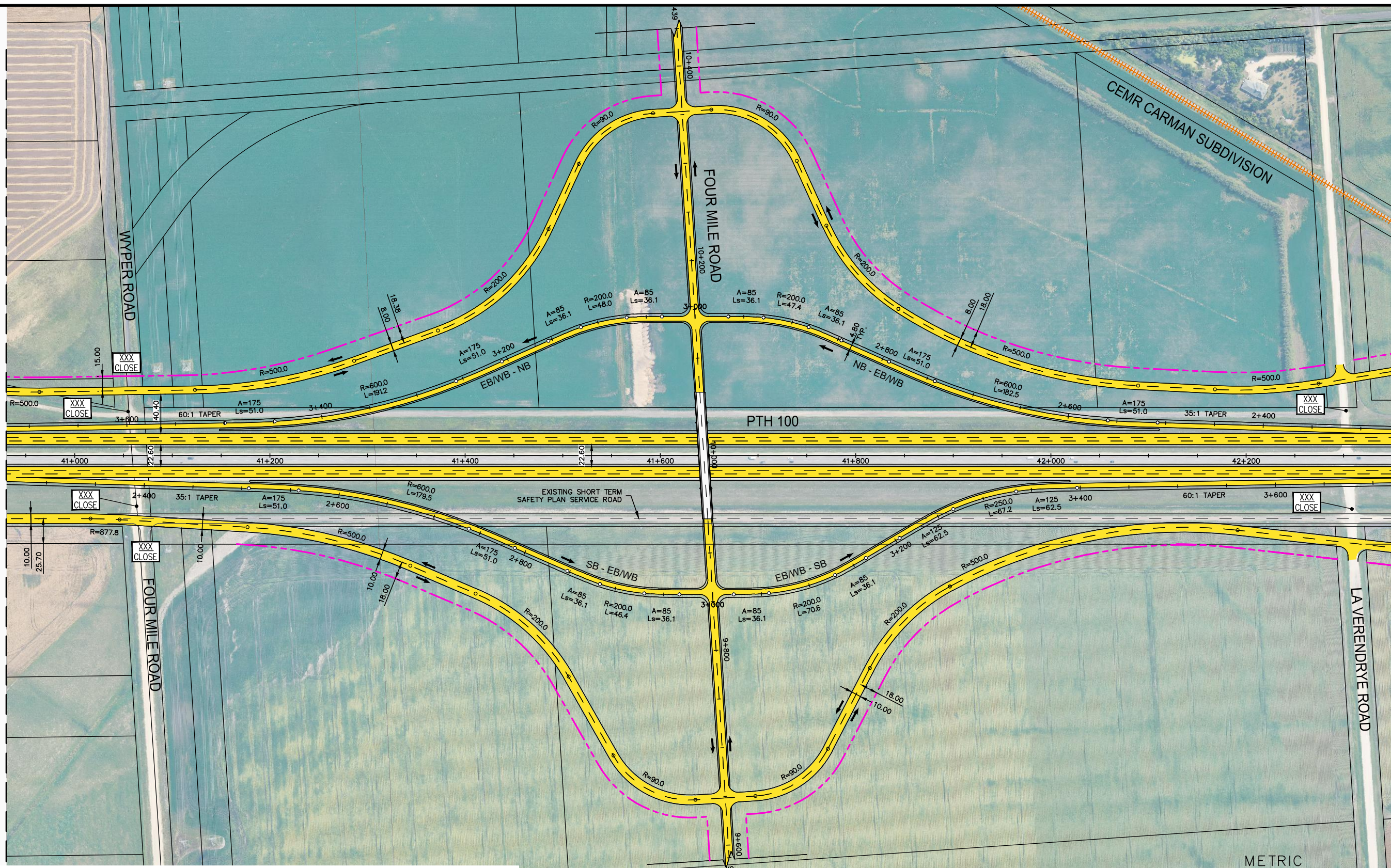
MANITOBA INFRASTRUCTURE
SOUTH PERIMETER HIGHWAY DESIGN STUDY
ULTIMATE STAGE PLANS
PTH 100

SCALE: 1:4000	DATE: 20-06-26	DWG. No. ULT-100-A	SHEET. No. 7 OF 44
------------------	-------------------	-----------------------	-----------------------



MATCH TO SHEET NO. 7

MATCH TO SHEET NO. 9



LEGEND-PLAN:

- | | | | |
|------------------------|--|------------------|--|
| EXISTING PROPERTY LINE | | PROPOSED ROADWAY | |
| PROPOSED PROPERTY LINE | | MULTI-USE TRAIL | |
| RETAINING WALL | | ROAD CLOSURE | |
| RAIL | | | |

METRIC
ALL MEASUREMENTS METRES,
UNLESS STATED OTHERWISE

NOTE:
These design documents are prepared solely for the use by the party with whom the design professional has entered into a contract and there are no representations of any kind made by the design professional to any party with whom the design professional has not entered into a contract.



WSP Canada Group Limited
Suite 111 - 93 Lombard Ave
Winnipeg, MB R3B 3B1
t. 204.943.3178
f. 204.943.4948
www.wsp.com

MANITOBA INFRASTRUCTURE
SOUTH PERIMETER HIGHWAY DESIGN STUDY
ULTIMATE STAGE PLANS
PTH 100 AT FOUR MILE ROAD

SCALE: 1:4000	DATE: 20-06-26	DWG. No. ULT-100-A	SHEET. No. 8 OF 44
------------------	-------------------	-----------------------	-----------------------