

MATCH TO SHEET NO. 2

METRIC  
ALL MEASUREMENTS METRES,  
UNLESS STATED OTHERWISE

**FOR 90% SUBMISSION**  
JULY 31, 2020

**LEGEND-PLAN:**

- |                        |  |                                   |  |
|------------------------|--|-----------------------------------|--|
| EXISTING PROPERTY LINE |  | MULTI-USE TRAIL                   |  |
| PROPOSED PROPERTY LINE |  | GRAVEL                            |  |
| RETAINING WALL         |  | ASPHALT                           |  |
| PROPOSED CULVERT       |  | INTERIM ROADWAY DESIGN (CONCRETE) |  |
| RAIL                   |  | INITIAL STAGE DESIGN              |  |
|                        |  | ROAD CLOSURE                      |  |

NOTE:  
These design documents are prepared solely for the use by the party with whom the design professional has entered into a contract and there are no representations of any kind made by the design professional to any party with whom the design professional has not entered into a contract.



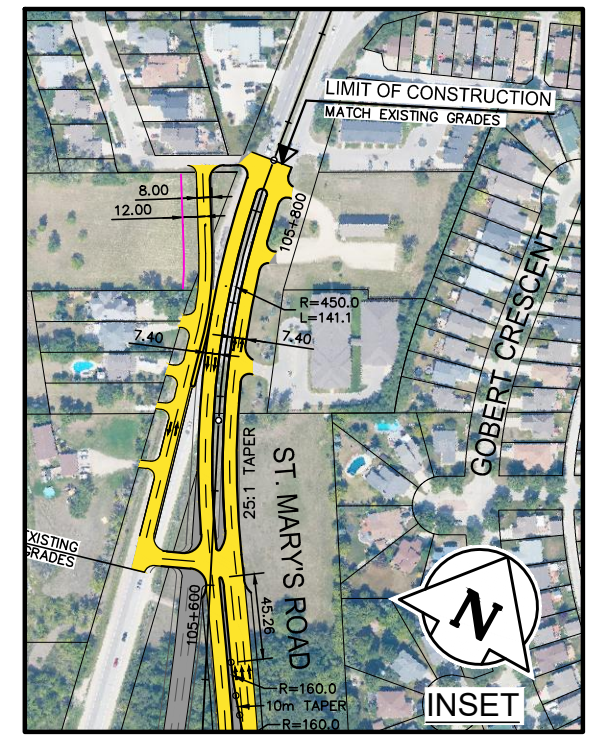
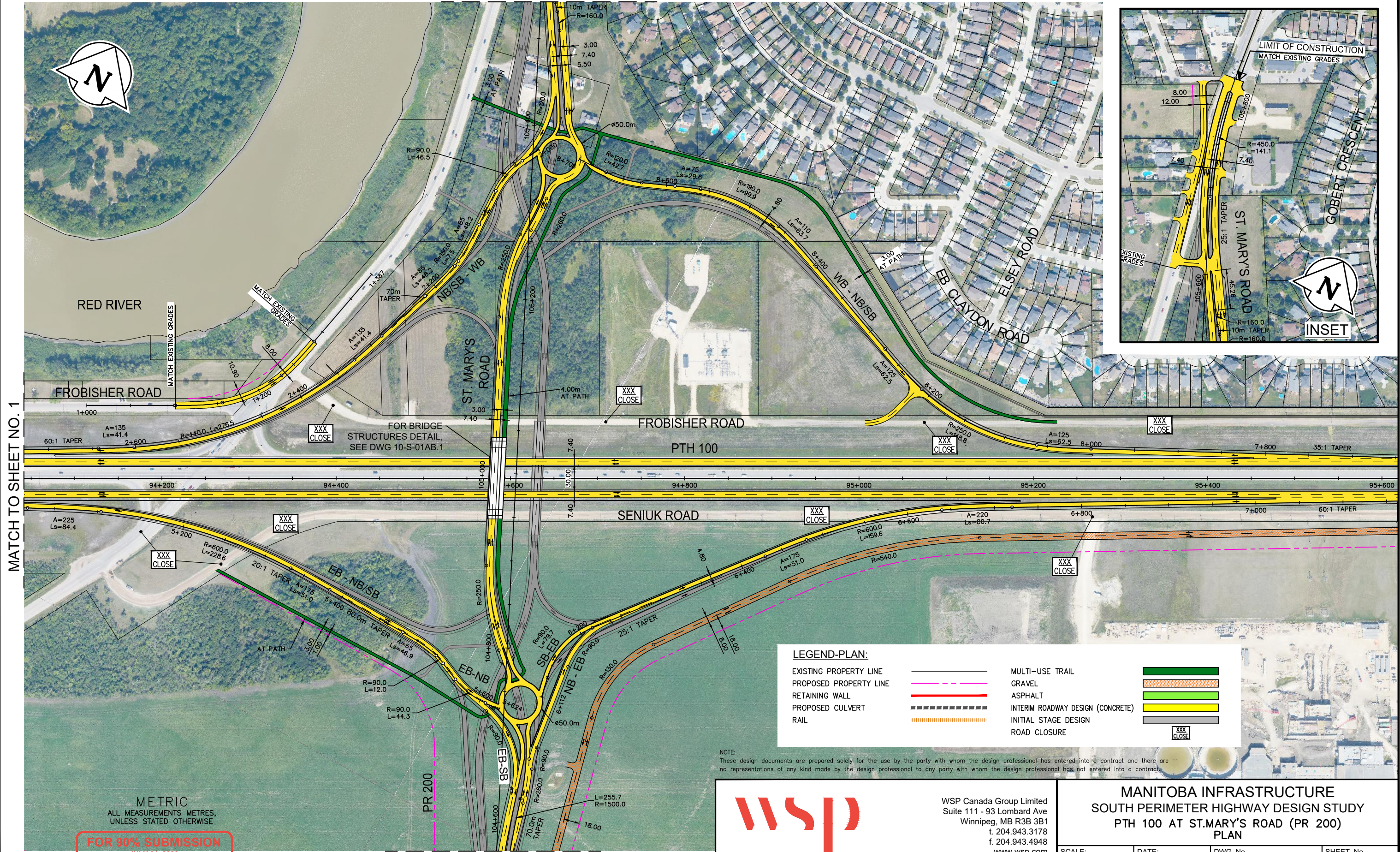
WSP Canada Group Limited  
Suite 111 - 93 Lombard Ave  
Winnipeg, MB R3B 3B1  
t. 204.943.3178  
f. 204.943.4948  
www.wsp.com

**MANITOBA INFRASTRUCTURE**  
**SOUTH PERIMETER HIGHWAY DESIGN STUDY**  
**PTH 100 AT ST.MARY'S ROAD (PR 200)**  
**PLAN**

SCALE: 1:4000	DATE: 20-07-29	DWG. No. INT-100-10A-A	SHEET. No. 1 OF 4
------------------	-------------------	---------------------------	----------------------



MATCH TO INSET



MATCH TO SHEET NO. 1

MATCH TO SHEET NO. 3

**LEGEND-PLAN:**

EXISTING PROPERTY LINE	—	MULTI-USE TRAIL	
PROPOSED PROPERTY LINE	- - -	GRAVEL	
RETAINING WALL	—	ASPHALT	
PROPOSED CULVERT	- - -	INTERIM ROADWAY DESIGN (CONCRETE)	
RAIL	—	INITIAL STAGE DESIGN	
		ROAD CLOSURE	

NOTE:  
These design documents are prepared solely for the use by the party with whom the design professional has entered into a contract and there are no representations of any kind made by the design professional to any party with whom the design professional has not entered into a contract.

METRIC  
ALL MEASUREMENTS METRES,  
UNLESS STATED OTHERWISE

**FOR 90% SUBMISSION**  
JULY 31, 2020



WSP Canada Group Limited  
Suite 111 - 93 Lombard Ave  
Winnipeg, MB R3B 3B1  
t. 204.943.3178  
f. 204.943.4948  
www.wsp.com

**MANITOBA INFRASTRUCTURE**  
**SOUTH PERIMETER HIGHWAY DESIGN STUDY**  
**PTH 100 AT ST.MARY'S ROAD (PR 200)**  
**PLAN**

SCALE: 1:4000	DATE: 20-07-29	DWG. No. INT-100-10A-A	SHEET. No. 2 OF 4
------------------	-------------------	---------------------------	----------------------





MATCH TO SHEET NO. 4



**LEGEND-PLAN:**

- |                        |       |                                   |  |
|------------------------|-------|-----------------------------------|--|
| EXISTING PROPERTY LINE | —     | MULTI-USE TRAIL                   |  |
| PROPOSED PROPERTY LINE | - - - | GRAVEL                            |  |
| RETAINING WALL         | —     | ASPHALT                           |  |
| PROPOSED CULVERT       | - - - | INTERIM ROADWAY DESIGN (CONCRETE) |  |
| RAIL                   | —     | INITIAL STAGE DESIGN              |  |
|                        | —     | ROAD CLOSURE                      |  |

NOTE:  
These design documents are prepared solely for the use by the party with whom the design professional has entered into a contract and there are no representations of any kind made by the design professional to any party with whom the design professional has not entered into a contract.

METRIC  
ALL MEASUREMENTS METRES,  
UNLESS STATED OTHERWISE

**FOR 90% SUBMISSION**  
JULY 31, 2020



WSP Canada Group Limited  
Suite 111 - 93 Lombard Ave  
Winnipeg, MB R3B 3B1  
t. 204.943.3178  
f. 204.943.4948  
www.wsp.com

**MANITOBA INFRASTRUCTURE**  
**SOUTH PERIMETER HIGHWAY DESIGN STUDY**  
**PTH 100 AT ST.MARY'S ROAD (PR 200)**  
**PLAN**

SCALE: 1:4000	DATE: 20-07-29	DWG. No. INT-100-10A-A	SHEET. No. 3 OF 4
------------------	-------------------	---------------------------	----------------------





MATCH TO SHEET NO. 3



METRIC  
ALL MEASUREMENTS METRES,  
UNLESS STATED OTHERWISE

**FOR 90% SUBMISSION**  
JULY 31, 2020

**LEGEND-PLAN:**

- |                        |  |                                   |  |
|------------------------|--|-----------------------------------|--|
| EXISTING PROPERTY LINE |  | MULTI-USE TRAIL                   |  |
| PROPOSED PROPERTY LINE |  | GRAVEL                            |  |
| RETAINING WALL         |  | ASPHALT                           |  |
| PROPOSED CULVERT       |  | INTERIM ROADWAY DESIGN (CONCRETE) |  |
| RAIL                   |  | INITIAL STAGE DESIGN              |  |
|                        |  | ROAD CLOSURE                      |  |

NOTE:  
These design documents are prepared solely for the use by the party with whom the design professional has entered into a contract and there are no representations of any kind made by the design professional to any party with whom the design professional has not entered into a contract.



WSP Canada Group Limited  
Suite 111 - 93 Lombard Ave  
Winnipeg, MB R3B 3B1  
t. 204.943.3178  
f. 204.943.4948  
www.wsp.com

**MANITOBA INFRASTRUCTURE**  
**SOUTH PERIMETER HIGHWAY DESIGN STUDY**  
**PTH 100 AT ST.MARY'S ROAD (PR 200)**  
**PLAN**

SCALE: 1:4000	DATE: 20-07-29	DWG. No. INT-100-10A-A	SHEET. No. 4 OF 4
------------------	-------------------	---------------------------	----------------------