

MATCH TO SHEET NO. 36

MATCH TO SHEET NO. 38

**LEGEND-PLAN:**

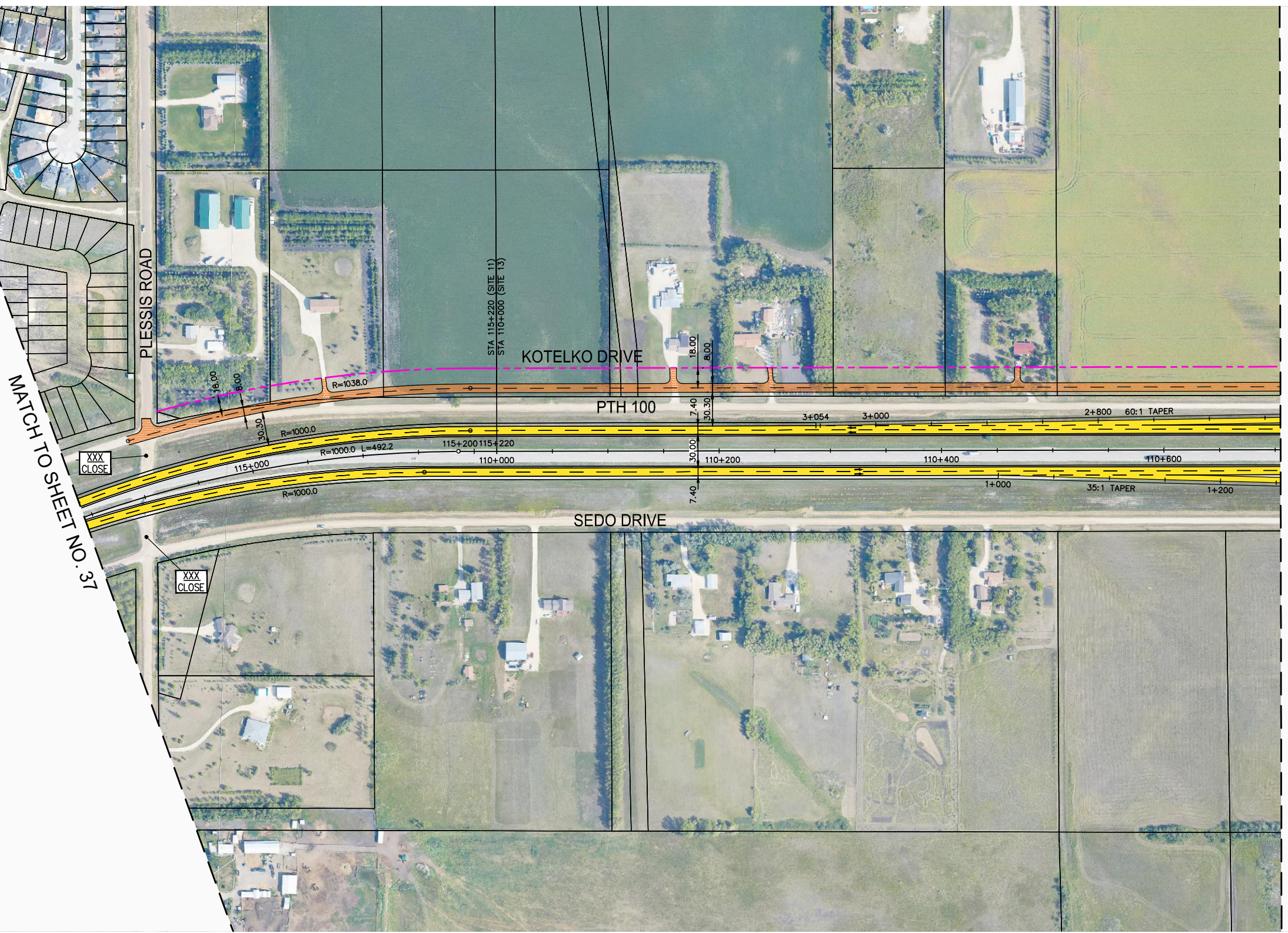
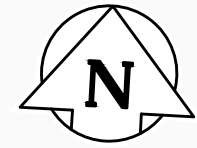
- EXISTING PROPERTY LINE
- PROPOSED PROPERTY LINE
- RETAINING WALL
- PROPOSED CULVERT
- RAIL
- CONCRETE
- GRAVEL
- ASPHALT
- MULTI-USE TRAIL
- DIRECTION OF DRAINAGE
- ROAD CLOSURE

NOTE:  
These design documents are prepared solely for the use by the party with whom the design professional has entered into a contract and there are no representations of any kind made by the design professional to any party with whom the design professional has not entered into a contract.

METRIC  
ALL MEASUREMENTS METRES,  
UNLESS STATED OTHERWISE

WSP Canada Group Limited  
Suite 111 - 93 Lombard Ave  
Winnipeg, MB R3B 3B1  
t. 204.943.3178  
f. 204.943.4948  
www.wsp.com

<b>MANITOBA INFRASTRUCTURE</b>			
<b>SOUTH PERIMETER HIGHWAY DESIGN STUDY</b>			
<b>INITIAL STAGE PLANS</b>			
<b>PTH 100</b>			
SCALE:	DATE:	DWG. No.	SHEET. No.
1:4000	20-06-26	INT-100-A	37 OF 42



MATCH TO SHEET NO. 37

MATCH TO SHEET NO. 39

**LEGEND-PLAN:**

- |                        |  |                       |  |
|------------------------|--|-----------------------|--|
| EXISTING PROPERTY LINE |  | CONCRETE              |  |
| PROPOSED PROPERTY LINE |  | GRAVEL                |  |
| RETAINING WALL         |  | ASPHALT               |  |
| PROPOSED CULVERT       |  | MULTI-USE TRAIL       |  |
| RAIL                   |  | DIRECTION OF DRAINAGE |  |
|                        |  | ROAD CLOSURE          |  |

NOTE:  
These design documents are prepared solely for the use by the party with whom the design professional has entered into a contract and there are no representations of any kind made by the design professional to any party with whom the design professional has not entered into a contract.

METRIC  
ALL MEASUREMENTS METRES,  
UNLESS STATED OTHERWISE

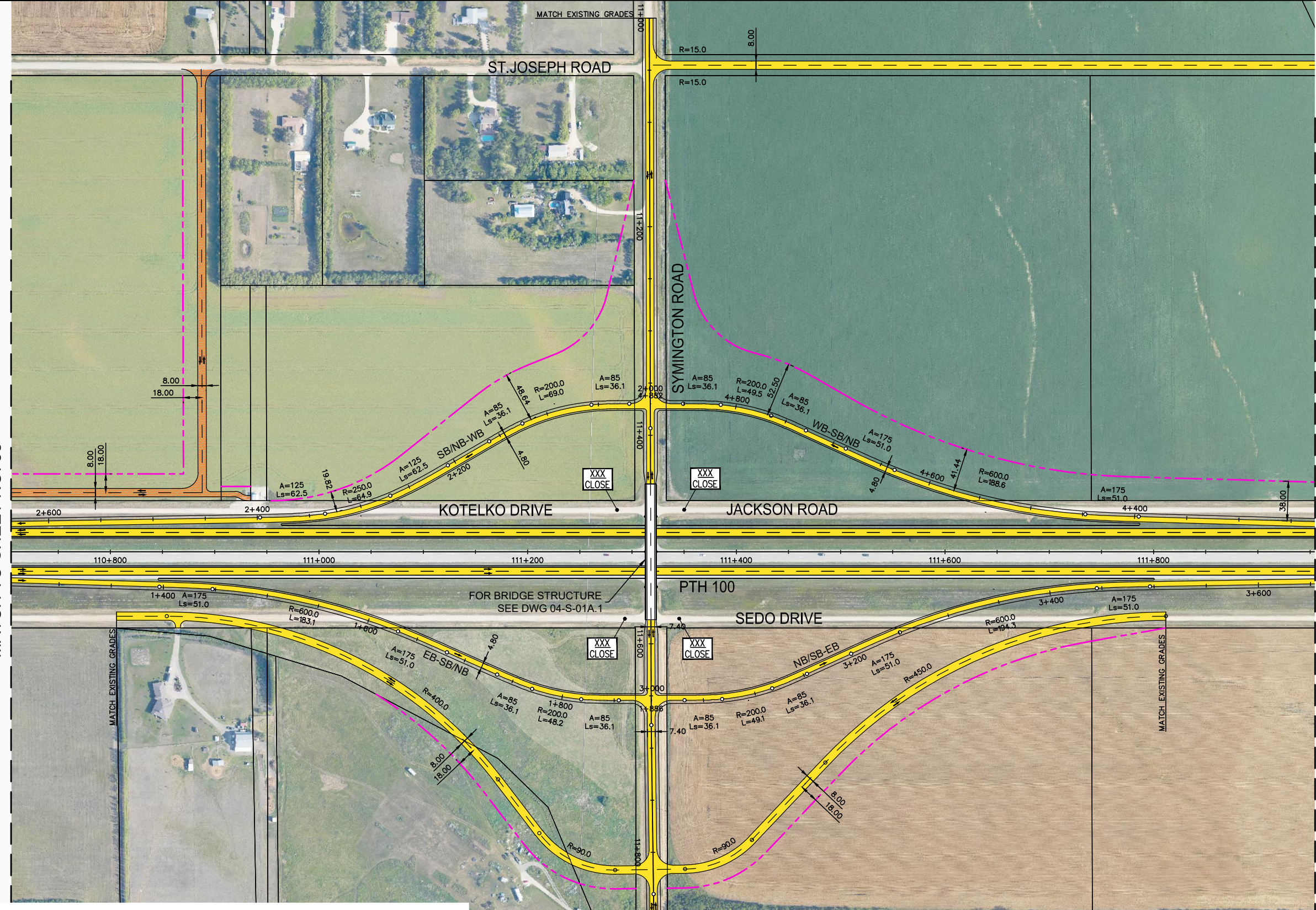
WSP Canada Group Limited  
Suite 111 - 93 Lombard Ave  
Winnipeg, MB R3B 3B1  
t. 204.943.3178  
f. 204.943.4948  
www.wsp.com

<b>MANITOBA INFRASTRUCTURE</b>			
<b>SOUTH PERIMETER HIGHWAY DESIGN STUDY</b>			
<b>INITIAL STAGE PLANS</b>			
<b>PTH 100</b>			
SCALE:	DATE:	DWG. No.	SHEET. No.
1:4000	20-06-26	INT-100-A	38 OF 42



MATCH TO SHEET NO. 38

MATCH TO SHEET NO. 40



**LEGEND-PLAN:**

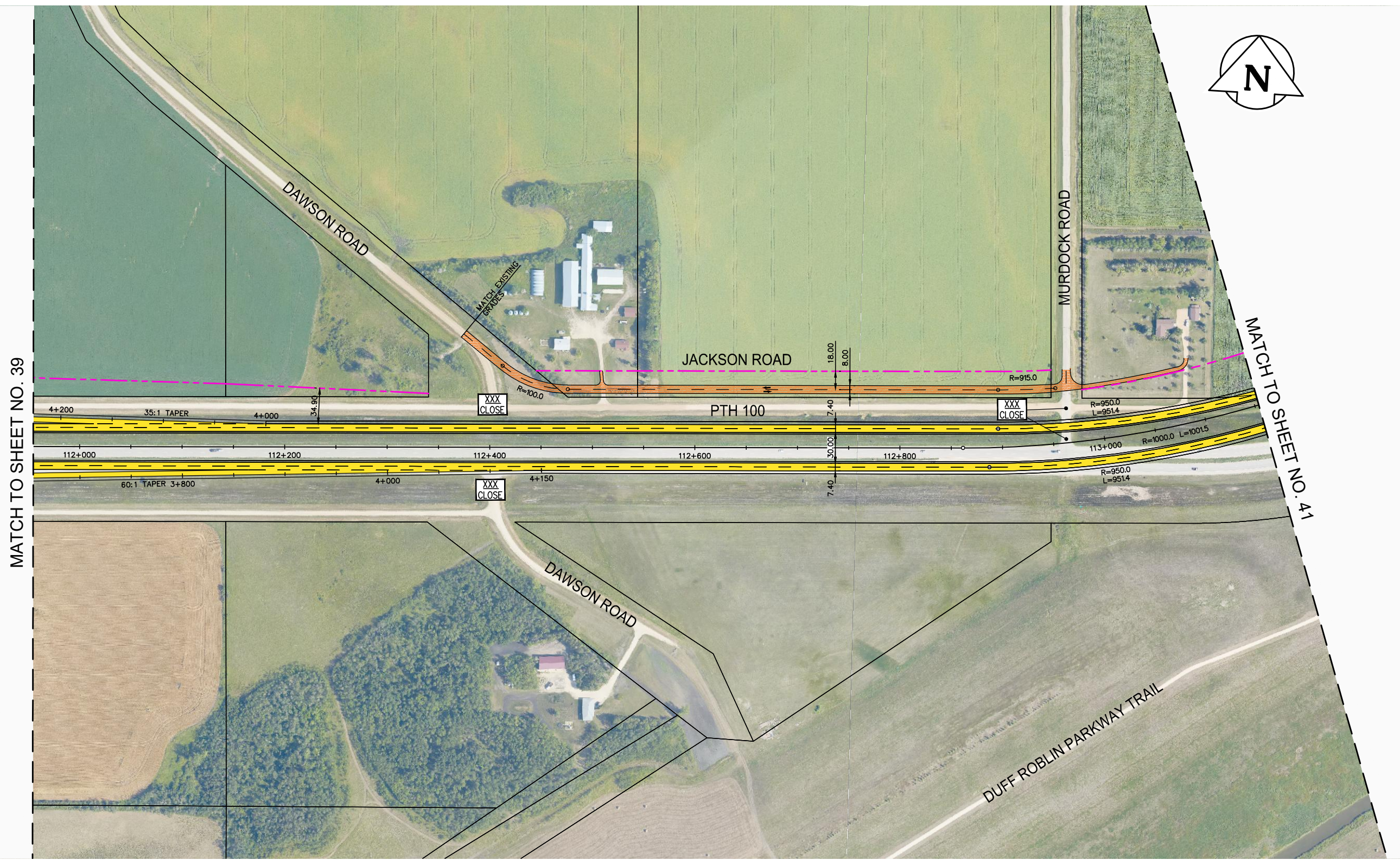
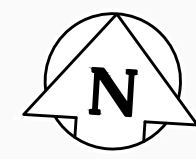
EXISTING PROPERTY LINE		CONCRETE	
PROPOSED PROPERTY LINE		GRAVEL	
RETAINING WALL		ASPHALT	
PROPOSED CULVERT		MULTI-USE TRAIL	
RAIL		DIRECTION OF DRAINAGE	
		ROAD CLOSURE	

**NOTE:**  
These design documents are prepared solely for the use by the party with whom the design professional has entered into a contract and there are no representations of any kind made by the design professional to any party with whom the design professional has not entered into a contract.

METRIC  
ALL MEASUREMENTS METRES,  
UNLESS STATED OTHERWISE

WSP Canada Group Limited  
Suite 111 - 93 Lombard Ave  
Winnipeg, MB R3B 3B1  
t. 204.943.3178  
f. 204.943.4948  
www.wsp.com

<b>MANITOBA INFRASTRUCTURE</b>			
<b>SOUTH PERIMETER HIGHWAY DESIGN STUDY</b>			
<b>INITIAL STAGE PLANS</b>			
<b>PTH 100 AT SYMINGTON ROAD</b>			
SCALE: 1:4000	DATE: 20-06-26	DWG. No. INT-100-A	SHEET. No. 39 OF 42



MATCH TO SHEET NO. 39

MATCH TO SHEET NO. 41

**LEGEND-PLAN:**

- EXISTING PROPERTY LINE
- PROPOSED PROPERTY LINE
- RETAINING WALL
- PROPOSED CULVERT
- RAIL
- CONCRETE
- GRAVEL
- ASPHALT
- MULTI-USE TRAIL
- DIRECTION OF DRAINAGE
- ROAD CLOSURE

METRIC  
ALL MEASUREMENTS METRES,  
UNLESS STATED OTHERWISE

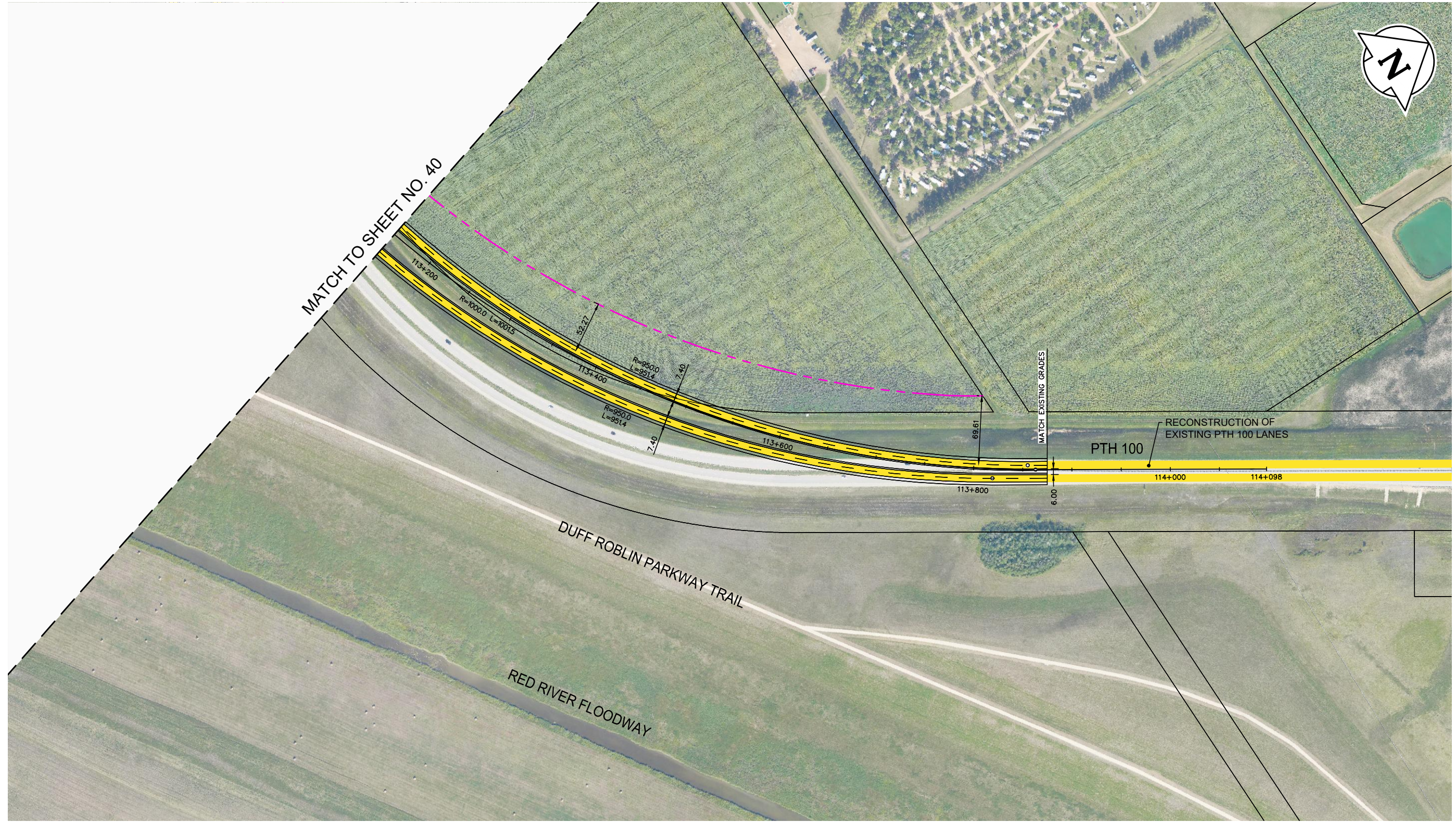


WSP Canada Group Limited  
Suite 111 - 93 Lombard Ave  
Winnipeg, MB R3B 3B1  
t. 204.943.3178  
f. 204.943.4948  
www.wsp.com

**MANITOBA INFRASTRUCTURE**  
**SOUTH PERIMETER HIGHWAY DESIGN STUDY**  
**INITIAL STAGE PLANS**  
**PTH 100 AT DAWSON ROAD**

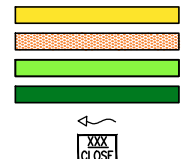
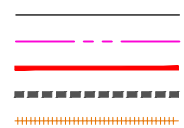
SCALE: 1:4000	DATE: 20-06-26	DWG. No. INT-100-A	SHEET. No. 40 OF 42
------------------	-------------------	-----------------------	------------------------

NOTE:  
These design documents are prepared solely for the use by the party with whom the design professional has entered into a contract and there are no representations of any kind made by the design professional to any party with whom the design professional has not entered into a contract.



**LEGEND-PLAN:**

- EXISTING PROPERTY LINE
- PROPOSED PROPERTY LINE
- RETAINING WALL
- PROPOSED CULVERT
- RAIL
- CONCRETE
- GRAVEL
- ASPHALT
- MULTI-USE TRAIL
- DIRECTION OF DRAINAGE
- ROAD CLOSURE

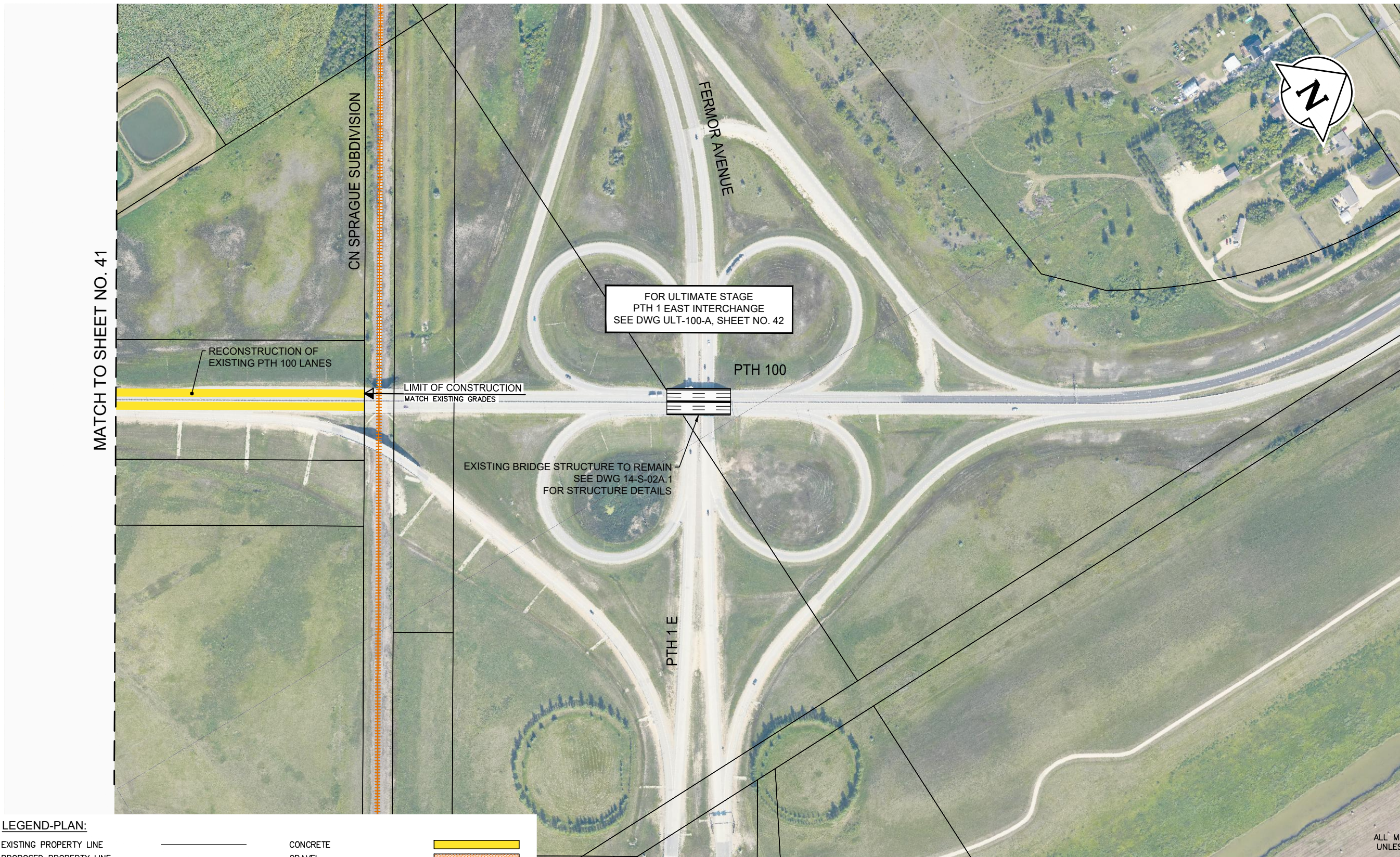


NOTE:  
These design documents are prepared solely for the use by the party with whom the design professional has entered into a contract and there are no representations of any kind made by the design professional to any party with whom the design professional has not entered into a contract.

METRIC  
ALL MEASUREMENTS METRES,  
UNLESS STATED OTHERWISE

WSP Canada Group Limited  
Suite 111 - 93 Lombard Ave  
Winnipeg, MB R3B 3B1  
t. 204.943.3178  
f. 204.943.4948  
www.wsp.com

<b>MANITOBA INFRASTRUCTURE</b> <b>SOUTH PERIMETER HIGHWAY DESIGN STUDY</b> <b>INITIAL STAGE PLANS</b> <b>PTH 100 AT FERMOR AVENUE (PTH 1 EAST)</b>			
SCALE:	DATE:	DWG. No.	SHEET. No.
1:4000	20-06-26	INT-100-A	41 OF 42



MATCH TO SHEET NO. 41

CN SPRAGUE SUBDIVISION

FERMOR AVENUE

PTH 100

FOR ULTIMATE STAGE  
PTH 1 EAST INTERCHANGE  
SEE DWG ULT-100-A, SHEET NO. 42

LIMIT OF CONSTRUCTION  
MATCH EXISTING GRADES

EXISTING BRIDGE STRUCTURE TO REMAIN  
SEE DWG 14-S-02A.1  
FOR STRUCTURE DETAILS

PTH 1 E

**LEGEND-PLAN:**

- EXISTING PROPERTY LINE
- PROPOSED PROPERTY LINE
- RETAINING WALL
- PROPOSED CULVERT
- RAIL
- CONCRETE
- GRAVEL
- ASPHALT
- MULTI-USE TRAIL
- DIRECTION OF DRAINAGE
- ROAD CLOSURE

METRIC  
ALL MEASUREMENTS METRES,  
UNLESS STATED OTHERWISE



WSP Canada Group Limited  
Suite 111 - 93 Lombard Ave  
Winnipeg, MB R3B 3B1  
t. 204.943.3178  
f. 204.943.4948  
www.wsp.com

**MANITOBA INFRASTRUCTURE  
SOUTH PERIMETER HIGHWAY DESIGN STUDY  
INITIAL STAGE PLANS  
PTH 100**

NOTE:  
These design documents are prepared solely for the use by the party with whom the design professional has entered into a contract and there are no representations of any kind made by the design professional to any party with whom the design professional has not entered into a contract.

SCALE: 1:4000	DATE: 20-06-26	DWG. No. INT-100-A	SHEET. No. 42 OF 42
------------------	-------------------	-----------------------	------------------------