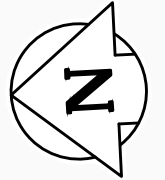


MATCH TO SHEET NO. 2



**LEGEND-PLAN:**

EXISTING PROPERTY LINE		CONCRETE	
PROPOSED PROPERTY LINE		GRAVEL	
RETAINING WALL		ASPHALT	
PROPOSED CULVERT		MULTI-USE TRAIL	
RAIL		DIRECTION OF DRAINAGE	
		ROAD CLOSURE	

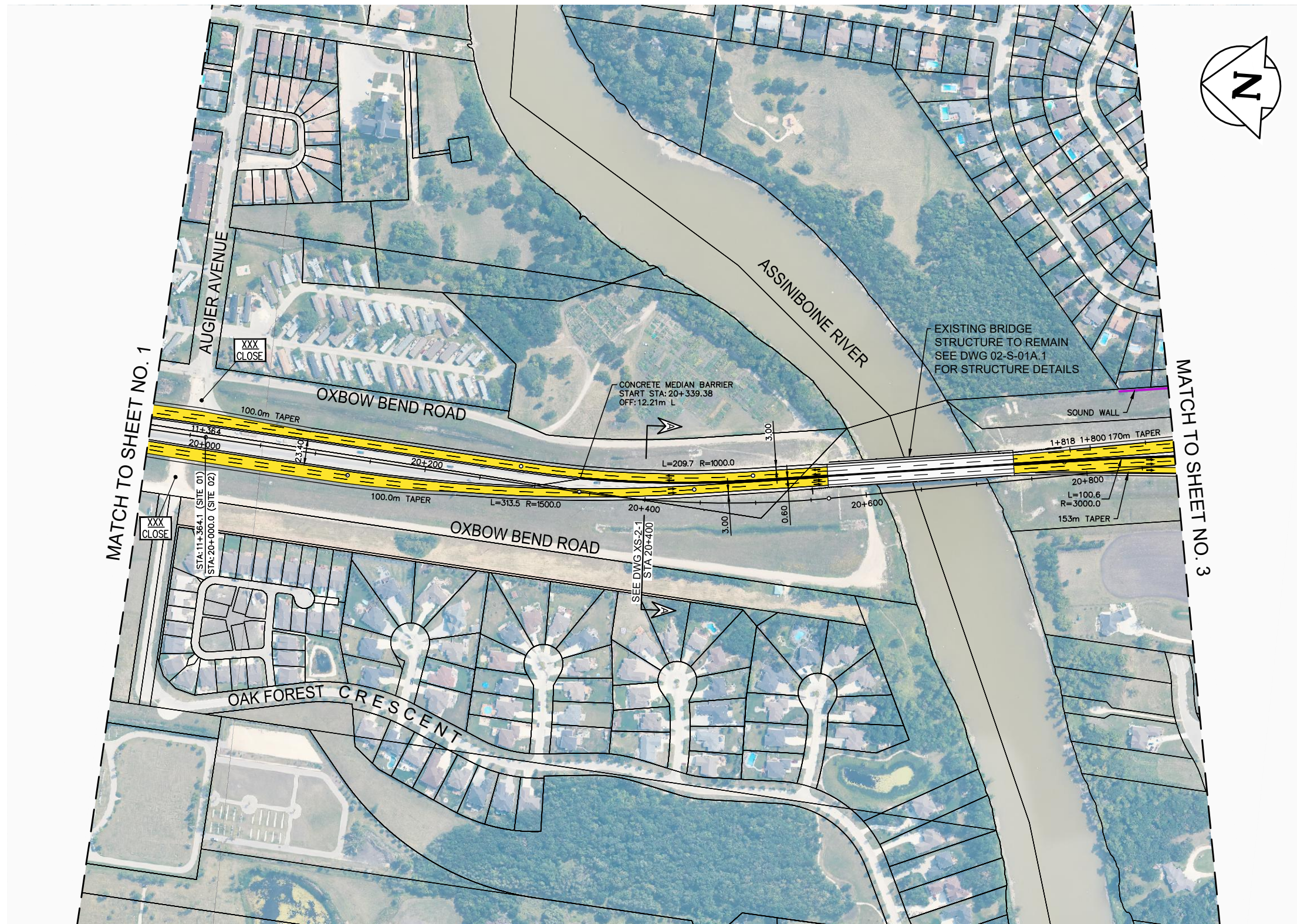
NOTE:  
These design documents are prepared solely for the use by the party with whom the design professional has entered into a contract and there are no representations of any kind made by the design professional to any party with whom the design professional has not entered into a contract.

METRIC  
ALL MEASUREMENTS METRES,  
UNLESS STATED OTHERWISE



WSP Canada Group Limited  
Suite 111 - 93 Lombard Ave  
Winnipeg, MB R3B 3B1  
t. 204.943.3178  
f. 204.943.4948  
www.wsp.com

<b>MANITOBA INFRASTRUCTURE</b>			
<b>SOUTH PERIMETER HIGHWAY DESIGN STUDY</b>			
<b>INITIAL STAGE PLANS</b>			
<b>PTH 100 AT PTH 1W (PORTAGE AVENUE)</b>			
SCALE:	DATE:	DWG. No.	SHEET. No.
1:4000	20-06-26	INT-100-A	1 OF 42



**LEGEND-PLAN:**

- EXISTING PROPERTY LINE
- PROPOSED PROPERTY LINE
- RETAINING WALL
- PROPOSED CULVERT
- RAIL

- 
- 
- 
- 
- 

- CONCRETE
- GRAVEL
- ASPHALT
- MULTI-USE TRAIL
- DIRECTION OF DRAINAGE
- ROAD CLOSURE

- 
- 
- 
- 
- 

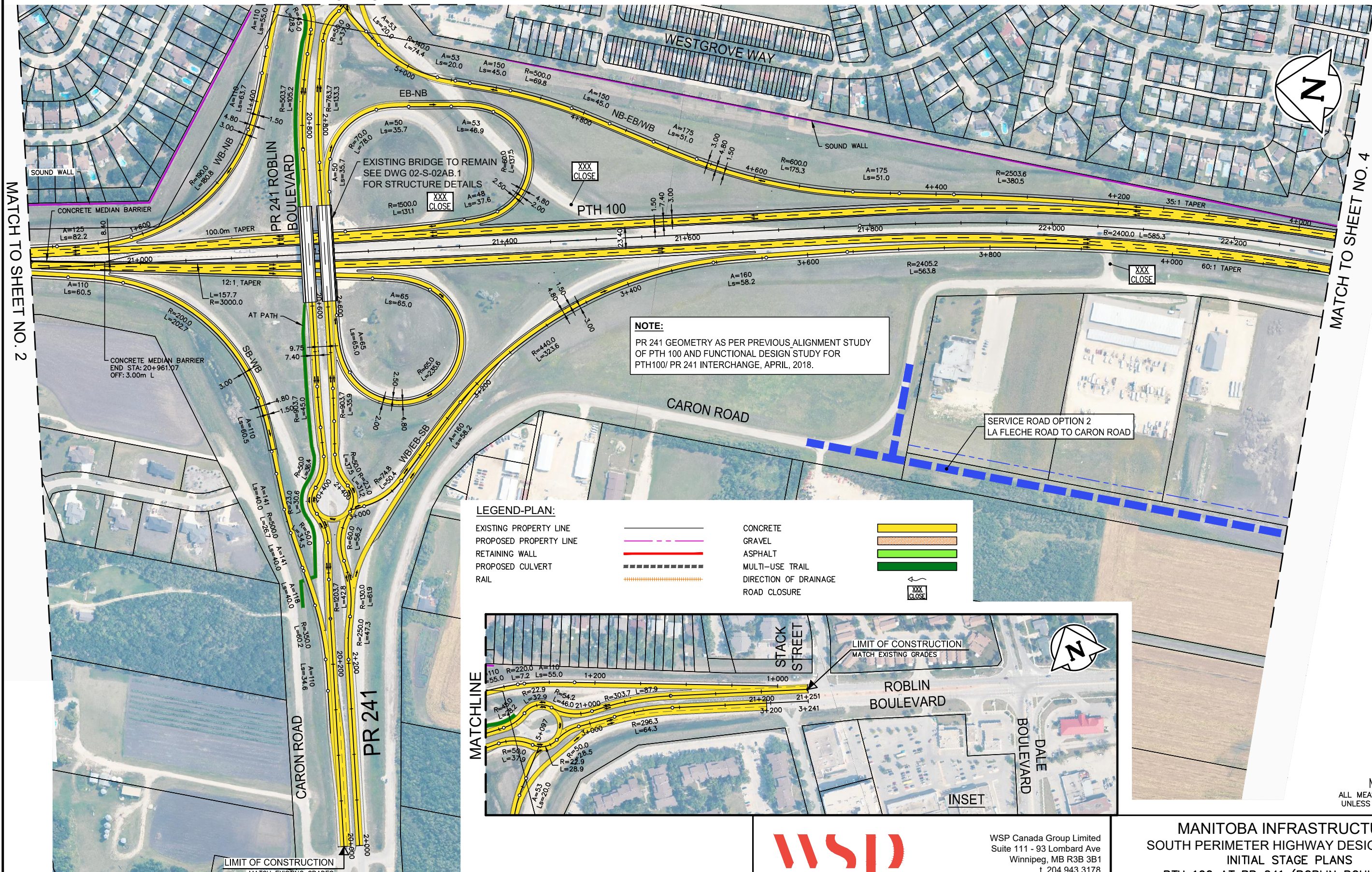
NOTE:  
These design documents are prepared solely for the use by the party with whom the design professional has entered into a contract and there are no representations of any kind made by the design professional to any party with whom the design professional has not entered into a contract.

METRIC  
ALL MEASUREMENTS METRES,  
UNLESS STATED OTHERWISE

WSP Canada Group Limited  
Suite 111 - 93 Lombard Ave  
Winnipeg, MB R3B 3B1  
t. 204.943.3178  
f. 204.943.4948  
www.wsp.com

<b>MANITOBA INFRASTRUCTURE</b>			
<b>SOUTH PERIMETER HIGHWAY DESIGN STUDY</b>			
<b>INITIAL STAGE PLANS</b>			
<b>PTH 100 AT ASSINIBOINE RIVER</b>			
SCALE: 1:4000	DATE: 20-06-26	DWG. No. INT-100-A	SHEET. No. 2 OF 42

MATCH TO INSET



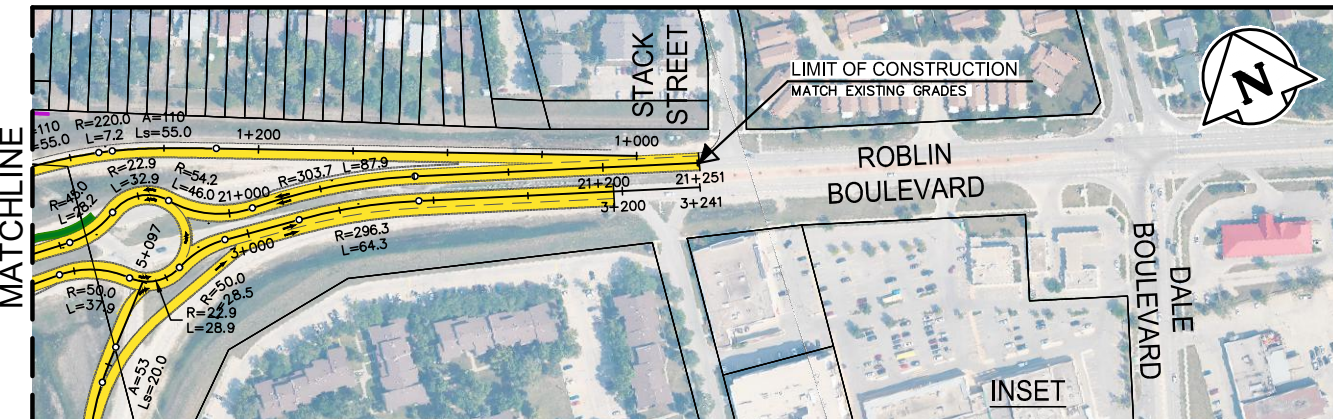
MATCH TO SHEET NO. 2

MATCH TO SHEET NO. 4

**NOTE:**  
 PR 241 GEOMETRY AS PER PREVIOUS ALIGNMENT STUDY OF PTH 100 AND FUNCTIONAL DESIGN STUDY FOR PTH100/ PR 241 INTERCHANGE, APRIL, 2018.

**LEGEND-PLAN:**

EXISTING PROPERTY LINE		CONCRETE	
PROPOSED PROPERTY LINE		GRAVEL	
RETAINING WALL		ASPHALT	
PROPOSED CULVERT		MULTI-USE TRAIL	
RAIL		DIRECTION OF DRAINAGE	
		ROAD CLOSURE	



MATCHLINE

INSET

LIMIT OF CONSTRUCTION  
 MATCH EXISTING GRADES

METRIC  
 ALL MEASUREMENTS METRES,  
 UNLESS STATED OTHERWISE

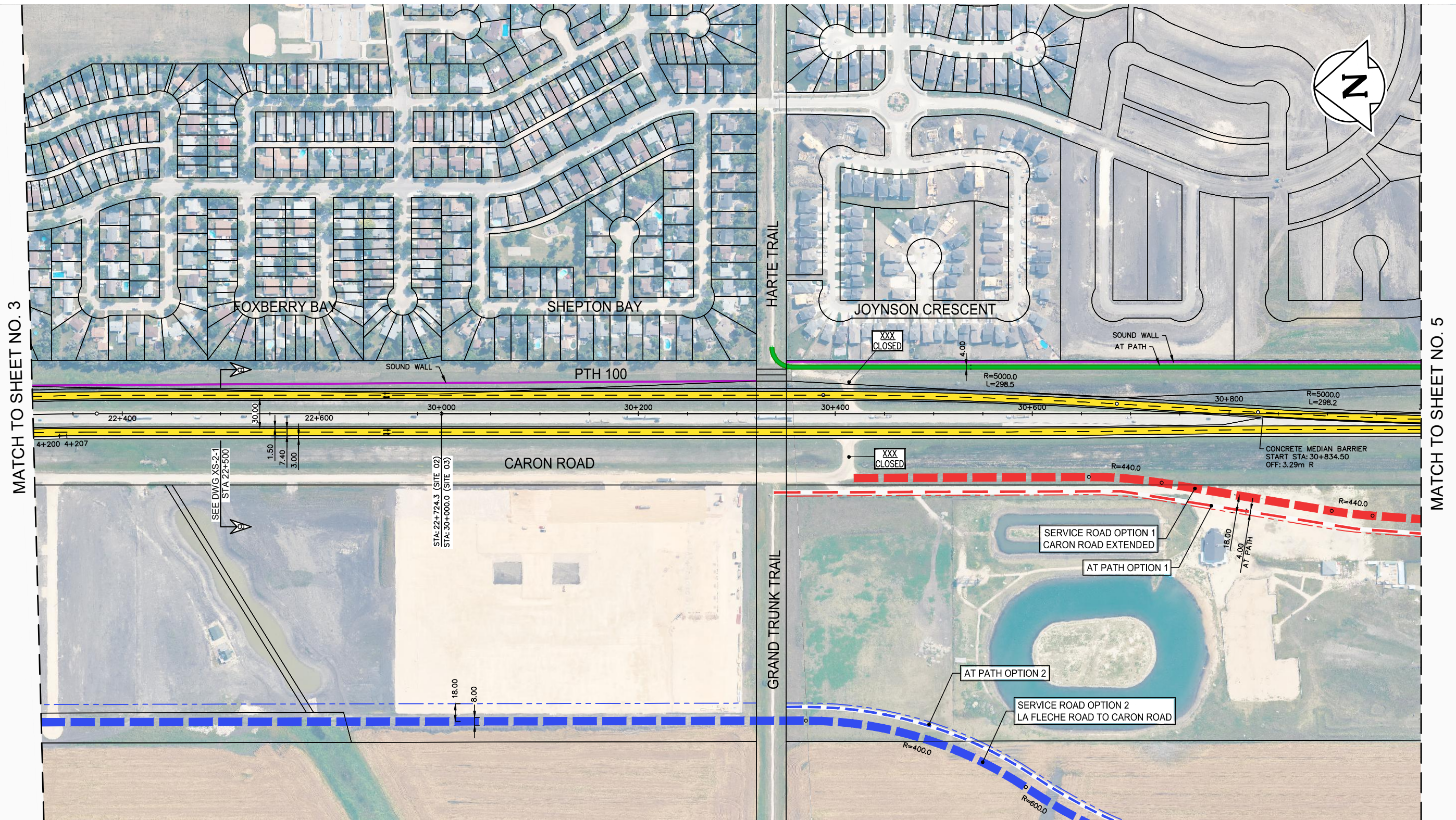
**NOTE:**  
 These design documents are prepared solely for the use by the party with whom the design professional has entered into a contract and there are no representations of any kind made by the design professional to any party with whom the design professional has not entered into a contract.



WSP Canada Group Limited  
 Suite 111 - 93 Lombard Ave  
 Winnipeg, MB R3B 3B1  
 t. 204.943.3178  
 f. 204.943.4948  
 www.wsp.com

**MANITOBA INFRASTRUCTURE**  
**SOUTH PERIMETER HIGHWAY DESIGN STUDY**  
**INITIAL STAGE PLANS**  
**PTH 100 AT PR 241 (ROBLIN BOULEVARD)**

SCALE: 1:4000	DATE: 20-06-26	DWG. No. INT-100-A	SHEET. No. 3 OF 42
------------------	-------------------	-----------------------	-----------------------



MATCH TO SHEET NO. 3

MATCH TO SHEET NO. 5

**LEGEND-PLAN:**

- |                        |  |                       |  |
|------------------------|--|-----------------------|--|
| EXISTING PROPERTY LINE |  | CONCRETE              |  |
| PROPOSED PROPERTY LINE |  | GRAVEL                |  |
| RETAINING WALL         |  | ASPHALT               |  |
| PROPOSED CULVERT       |  | MULTI-USE TRAIL       |  |
| RAIL                   |  | DIRECTION OF DRAINAGE |  |
|                        |  | ROAD CLOSURE          |  |

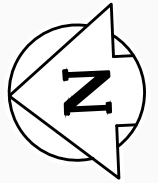
NOTE:  
These design documents are prepared solely for the use by the party with whom the design professional has entered into a contract and there are no representations of any kind made by the design professional to any party with whom the design professional has not entered into a contract.

METRIC  
ALL MEASUREMENTS METRES,  
UNLESS STATED OTHERWISE



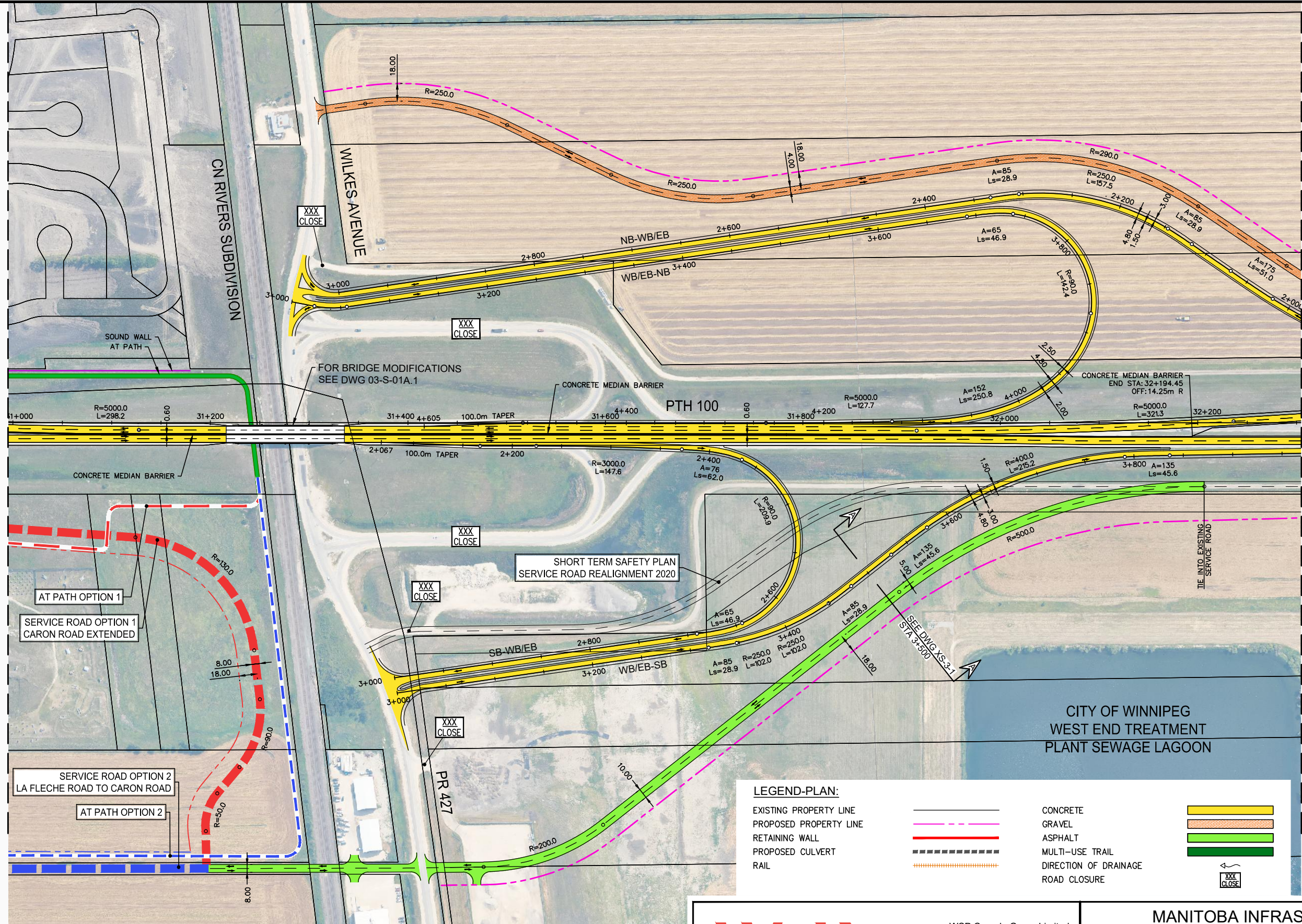
WSP Canada Group Limited  
Suite 111 - 93 Lombard Ave  
Winnipeg, MB R3B 3B1  
t. 204.943.3178  
f. 204.943.4948  
www.wsp.com

<b>MANITOBA INFRASTRUCTURE</b>			
<b>SOUTH PERIMETER HIGHWAY DESIGN STUDY</b>			
<b>INITIAL STAGE PLANS</b>			
<b>PTH 100 AT GRAND TRUNK TRAIL</b>			
SCALE: 1:4000	DATE: 20-06-26	DWG. No. INT-100-A	SHEET. No. 4 OF 42



MATCH TO SHEET NO. 4

MATCH TO SHEET NO. 6



SOUND WALL AT PATH

FOR BRIDGE MODIFICATIONS SEE DWG 03-S-01A.1

CONCRETE MEDIAN BARRIER

PTH 100

CONCRETE MEDIAN BARRIER  
END STA: 32+194.45  
OFF: 14.25m R

CONCRETE MEDIAN BARRIER

SHORT TERM SAFETY PLAN  
SERVICE ROAD REALIGNMENT 2020

TIE INTO EXISTING  
SERVICE ROAD

AT PATH OPTION 1  
SERVICE ROAD OPTION 1  
CARON ROAD EXTENDED

SERVICE ROAD OPTION 2  
LA FLECHE ROAD TO CARON ROAD

CITY OF WINNIPEG  
WEST END TREATMENT  
PLANT SEWAGE LAGOON

PR 427

**LEGEND-PLAN:**

- EXISTING PROPERTY LINE
- - - PROPOSED PROPERTY LINE
- RETAINING WALL
- - - PROPOSED CULVERT
- RAIL

- CONCRETE
- - - GRAVEL
- ASPHALT
- - - MULTI-USE TRAIL
- DIRECTION OF DRAINAGE
- ROAD CLOSURE

- CONCRETE
- GRAVEL
- ASPHALT
- MULTI-USE TRAIL
- DIRECTION OF DRAINAGE
- ROAD CLOSURE



METRIC  
ALL MEASUREMENTS METRES,  
UNLESS STATED OTHERWISE

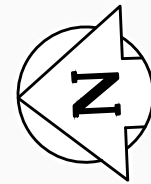


WSP Canada Group Limited  
Suite 111 - 93 Lombard Ave  
Winnipeg, MB R3B 3B1  
t. 204.943.3178  
f. 204.943.4948  
www.wsp.com

**MANITOBA INFRASTRUCTURE**  
SOUTH PERIMETER HIGHWAY DESIGN STUDY  
INITIAL STAGE PLANS  
PTH 100 AT WILKES AVENUE (PR 427)

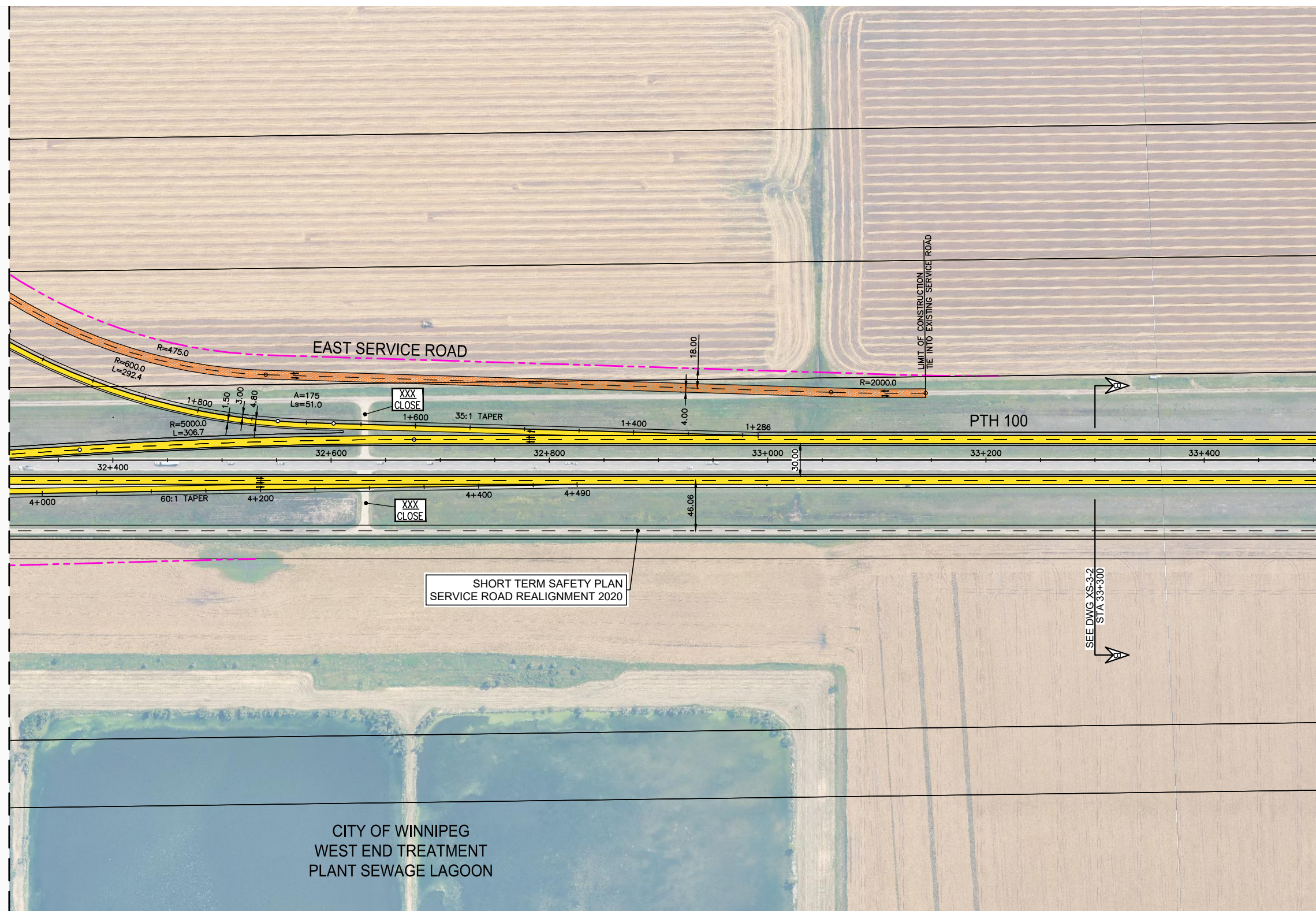
SCALE: 1:4000	DATE: 20-06-26	DWG. No. INT-100-A	SHEET. No. 5 OF 42
------------------	-------------------	-----------------------	-----------------------

NOTE:  
These design documents are prepared solely for the use by the party with whom the design professional has entered into a contract and there are no representations of any kind made by the design professional to any party with whom the design professional has not entered into a contract.



MATCH TO SHEET NO. 5

MATCH TO SHEET NO. 7



**LEGEND-PLAN:**

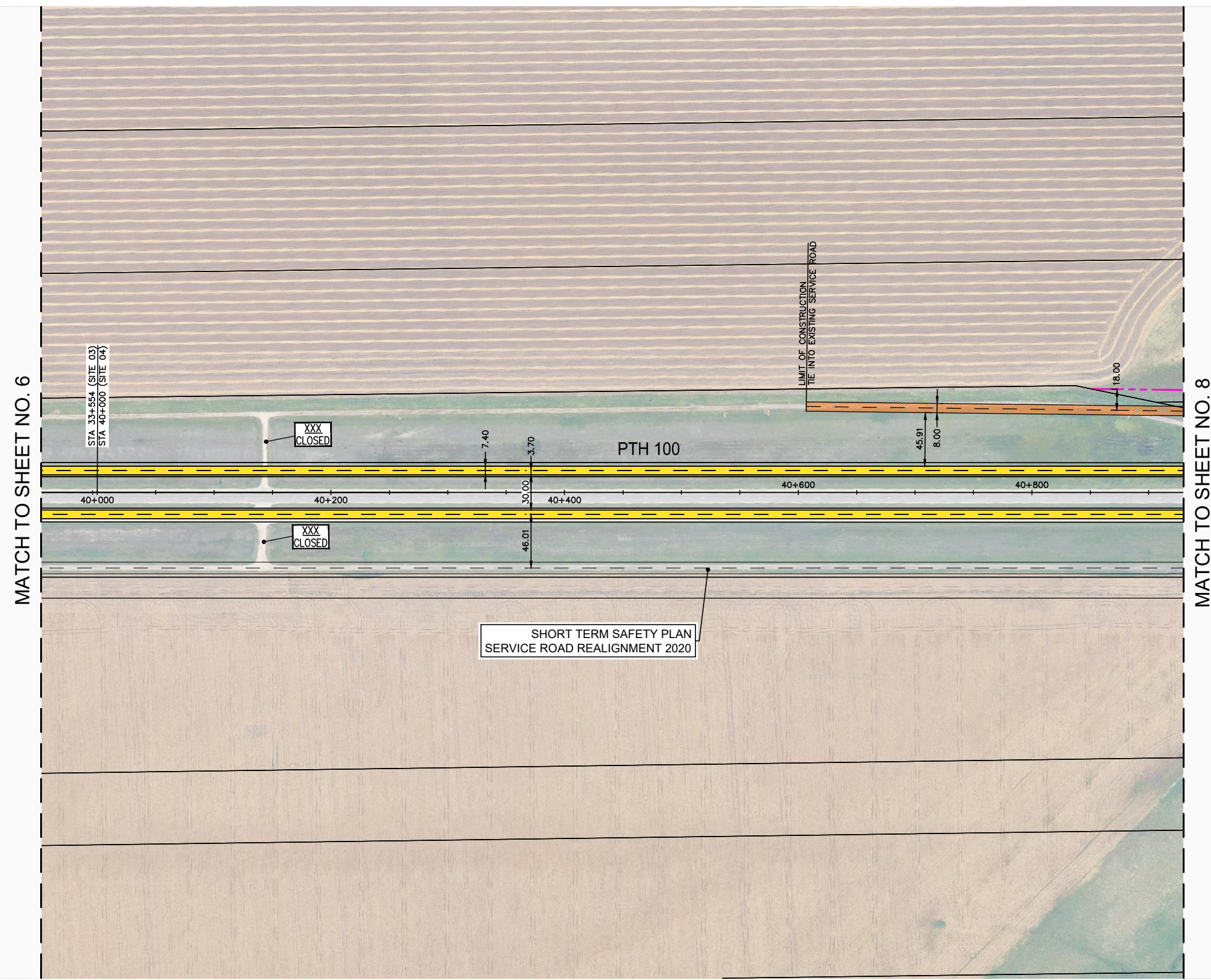
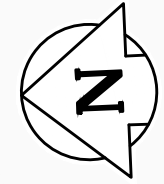
EXISTING PROPERTY LINE		CONCRETE	
PROPOSED PROPERTY LINE		GRAVEL	
RETAINING WALL		ASPHALT	
PROPOSED CULVERT		MULTI-USE TRAIL	
RAIL		DIRECTION OF DRAINAGE	
		ROAD CLOSURE	

NOTE:  
These design documents are prepared solely for the use by the party with whom the design professional has entered into a contract and there are no representations of any kind made by the design professional to any party with whom the design professional has not entered into a contract.

METRIC  
ALL MEASUREMENTS METRES,  
UNLESS STATED OTHERWISE

WSP Canada Group Limited  
Suite 111 - 93 Lombard Ave  
Winnipeg, MB R3B 3B1  
t. 204.943.3178  
f. 204.943.4948  
www.wsp.com

<b>MANITOBA INFRASTRUCTURE</b>			
<b>SOUTH PERIMETER HIGHWAY DESIGN STUDY</b>			
<b>INITIAL STAGE PLANS</b>			
<b>PTH 100</b>			
SCALE:	DATE:	DWG. No.	SHEET. No.
1:4000	20-06-26	INT-100-A	6 OF 42



**LEGEND-PLAN:**

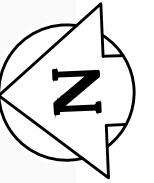
- EXISTING PROPERTY LINE
- PROPOSED PROPERTY LINE
- RETAINING WALL
- PROPOSED CULVERT
- RAIL
- CONCRETE
- GRAVEL
- ASPHALT
- MULTI-USE TRAIL
- DIRECTION OF DRAINAGE
- ROAD CLOSURE

NOTE:  
These design documents are prepared solely for the use by the party with whom the design professional has entered into a contract and there are no representations of any kind made by the design professional to any party with whom the design professional has not entered into a contract.

METRIC  
ALL MEASUREMENTS METRES,  
UNLESS STATED OTHERWISE

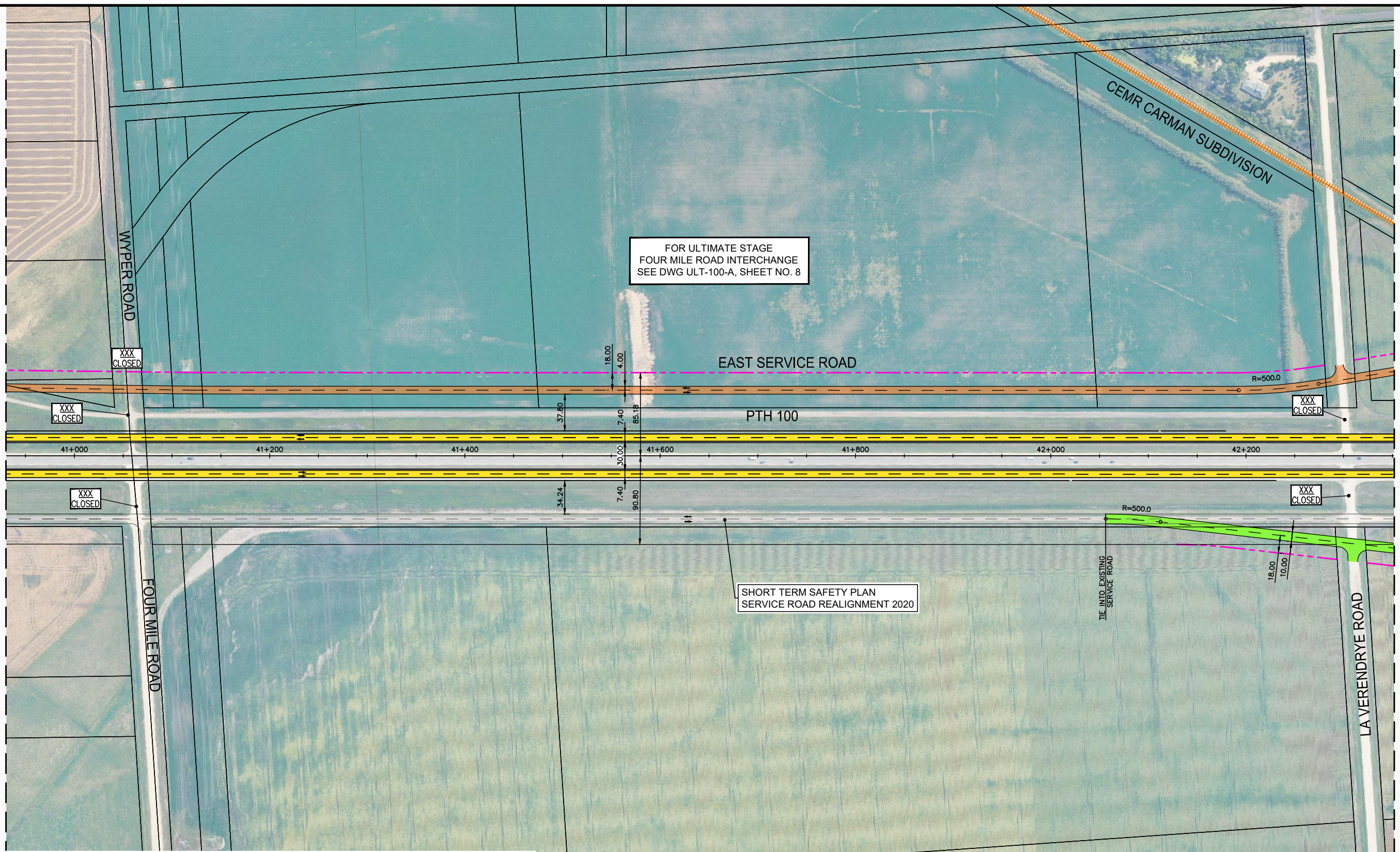
WSP Canada Group Limited  
Suite 111 - 93 Lombard Ave  
Winnipeg, MB R3B 3B1  
t. 204.943.3178  
f. 204.943.4948  
www.wsp.com

<b>MANITOBA INFRASTRUCTURE</b>			
<b>SOUTH PERIMETER HIGHWAY DESIGN STUDY</b>			
<b>INITIAL STAGE PLANS</b>			
<b>PTH 100</b>			
SCALE: 1:4000	DATE: 20-06-26	DWG. No. INT-100-A	SHEET. No. 7 OF 42



MATCH TO SHEET NO. 7

MATCH TO SHEET NO. 9



FOR ULTIMATE STAGE  
FOUR MILE ROAD INTERCHANGE  
SEE DWG ULT-100-A, SHEET NO. 8

SHORT TERM SAFETY PLAN  
SERVICE ROAD REALIGNMENT 2020

**LEGEND-PLAN:**

- EXISTING PROPERTY LINE
- PROPOSED PROPERTY LINE
- RETAINING WALL
- PROPOSED CULVERT
- RAIL
- CONCRETE
- GRAVEL
- ASPHALT
- MULTI-USE TRAIL
- DIRECTION OF DRAINAGE
- ROAD CLOSURE

METRIC  
ALL MEASUREMENTS METRES,  
UNLESS STATED OTHERWISE

NOTE:  
These design documents are prepared solely for the use by the party with whom the design professional has entered into a contract and there are no representations of any kind made by the design professional to any party with whom the design professional has not entered into a contract.



WSP Canada Group Limited  
Suite 111 - 93 Lombard Ave  
Winnipeg, MB R3B 3B1  
t. 204.943.3178  
f. 204.943.4948  
www.wsp.com

**MANITOBA INFRASTRUCTURE  
SOUTH PERIMETER HIGHWAY DESIGN STUDY  
INITIAL STAGE PLANS  
PTH 100 AT FOUR MILE ROAD**

SCALE: 1:4000	DATE: 20-06-26	DWG. No. INT-100-A	SHEET. No. 8 OF 42
------------------	-------------------	-----------------------	-----------------------