



FOR ULTIMATE STAGE
ROAD 8 EAST INTERCHANGE
SEE DWG ULT-100-A, SHEET NO. 15

ROAD 8E

NORTH SERVICE ROAD

PTH 100

SOUTH SERVICE ROAD

ROAD 8E

MATCH TO SHEET NO. 14

MATCH TO SHEET NO. 16

XXX
CLOSE

XXX
CLOSE

XXX
CLOSE

XXX
CLOSE

XXX
CLOSE

XXX
CLOSE

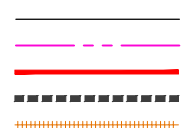
XXX
CLOSE

XXX
CLOSE

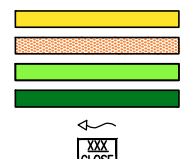
XXX
CLOSE

LEGEND-PLAN:

- EXISTING PROPERTY LINE
- PROPOSED PROPERTY LINE
- RETAINING WALL
- PROPOSED CULVERT
- RAIL



- CONCRETE
- GRAVEL
- ASPHALT
- MULTI-USE TRAIL
- DIRECTION OF DRAINAGE
- ROAD CLOSURE



NOTE:
These design documents are prepared solely for the use by the party with whom the design professional has entered into a contract and there are no representations of any kind made by the design professional to any party with whom the design professional has not entered into a contract.

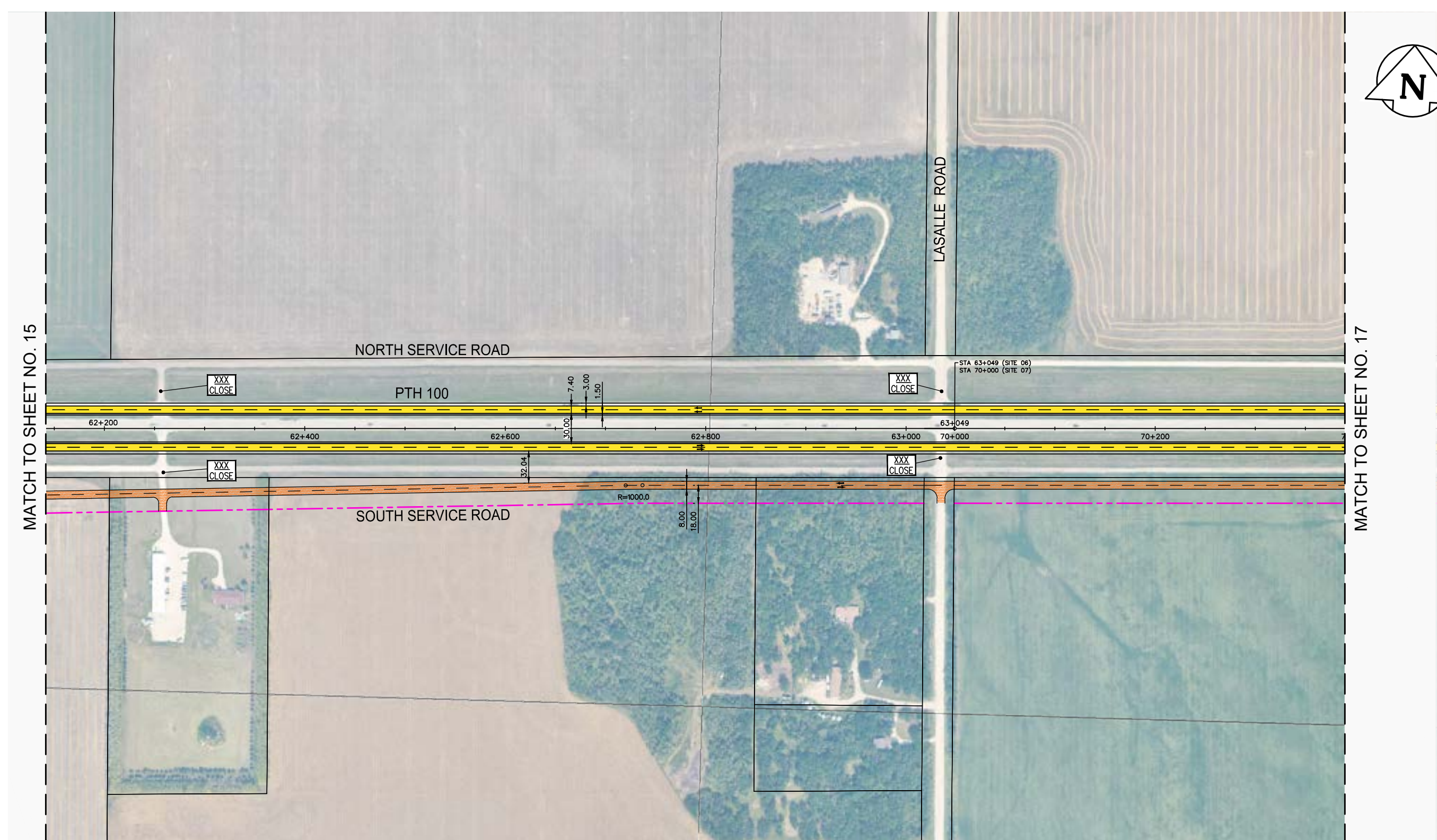
METRIC
ALL MEASUREMENTS METRES,
UNLESS STATED OTHERWISE



WSP Canada Group Limited
Suite 111 - 93 Lombard Ave
Winnipeg, MB R3B 3B1
t. 204.943.3178
f. 204.943.4948
www.wsp.com

MANITOBA INFRASTRUCTURE
SOUTH PERIMETER HIGHWAY DESIGN STUDY
INITIAL STAGE PLANS
PTH 100 AT ROAD 8 EAST

SCALE: 1:4000	DATE: 20-06-26	DWG. No. INT-100-A	SHEET. No. 15 OF 42
------------------	-------------------	-----------------------	------------------------



MATCH TO SHEET NO. 15

MATCH TO SHEET NO. 17

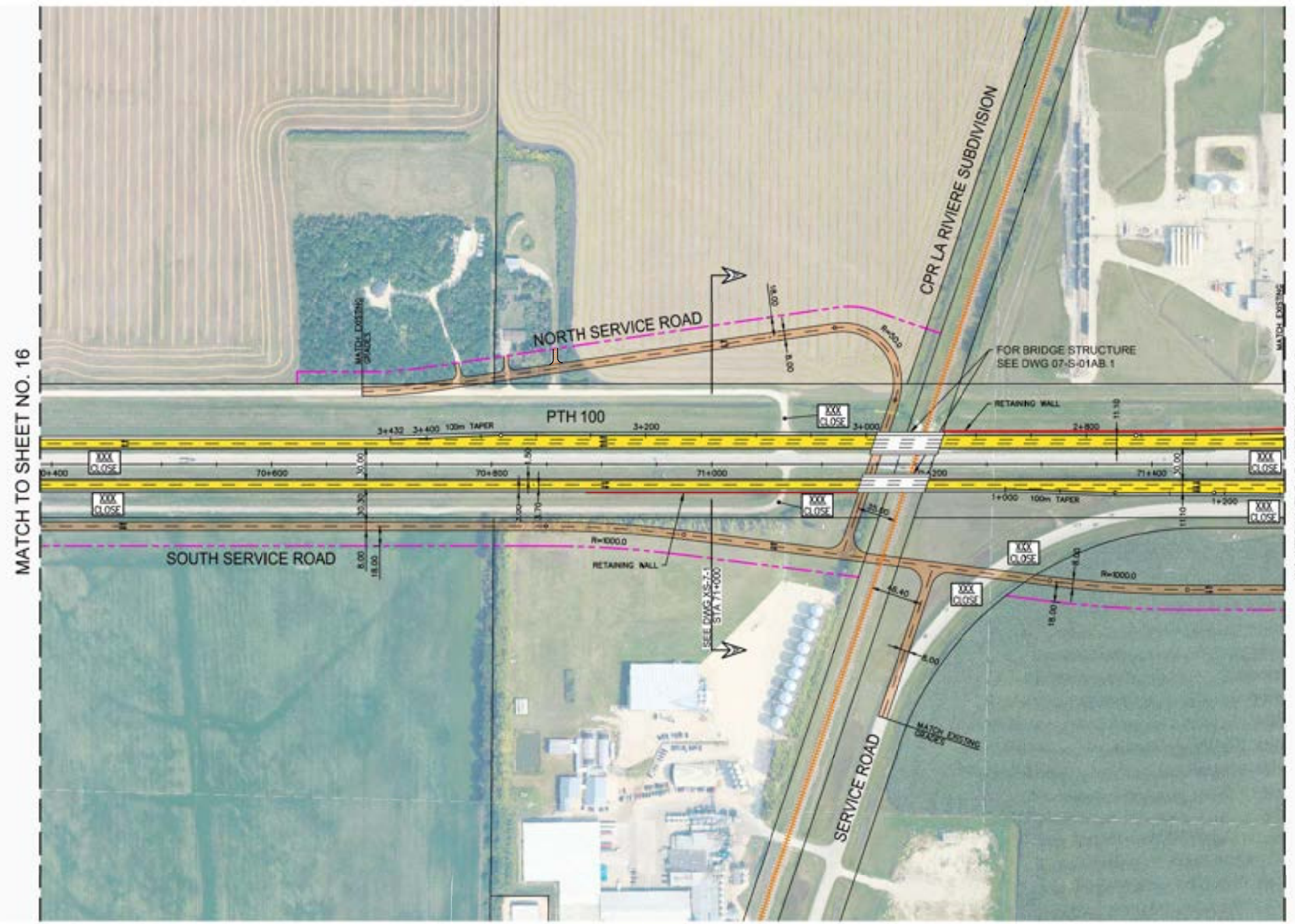
LEGEND-PLAN:

- | | | | |
|------------------------|--|-----------------------|--|
| EXISTING PROPERTY LINE | | CONCRETE | |
| PROPOSED PROPERTY LINE | | GRAVEL | |
| RETAINING WALL | | ASPHALT | |
| PROPOSED CULVERT | | MULTI-USE TRAIL | |
| RAIL | | DIRECTION OF DRAINAGE | |
| | | ROAD CLOSURE | |

NOTE:
These design documents are prepared solely for the use by the party with whom the design professional has entered into a contract and there are no representations of any kind made by the design professional to any party with whom the design professional has not entered into a contract.

METRIC
ALL MEASUREMENTS METRES,
UNLESS STATED OTHERWISE

	WSP Canada Group Limited Suite 111 - 93 Lombard Ave Winnipeg, MB R3B 3B1 t. 204.943.3178 f. 204.943.4948 www.wsp.com		MANITOBA INFRASTRUCTURE SOUTH PERIMETER HIGHWAY DESIGN STUDY INITIAL STAGE PLANS PTH 100	
	SCALE: 1:4000	DATE: 20-06-26	DWG. No. INT-100-A	SHEET. No. 16 OF 42



MATCH TO SHEET NO. 16

MATCH TO SHEET NO. 18

LEGEND-PLAN:

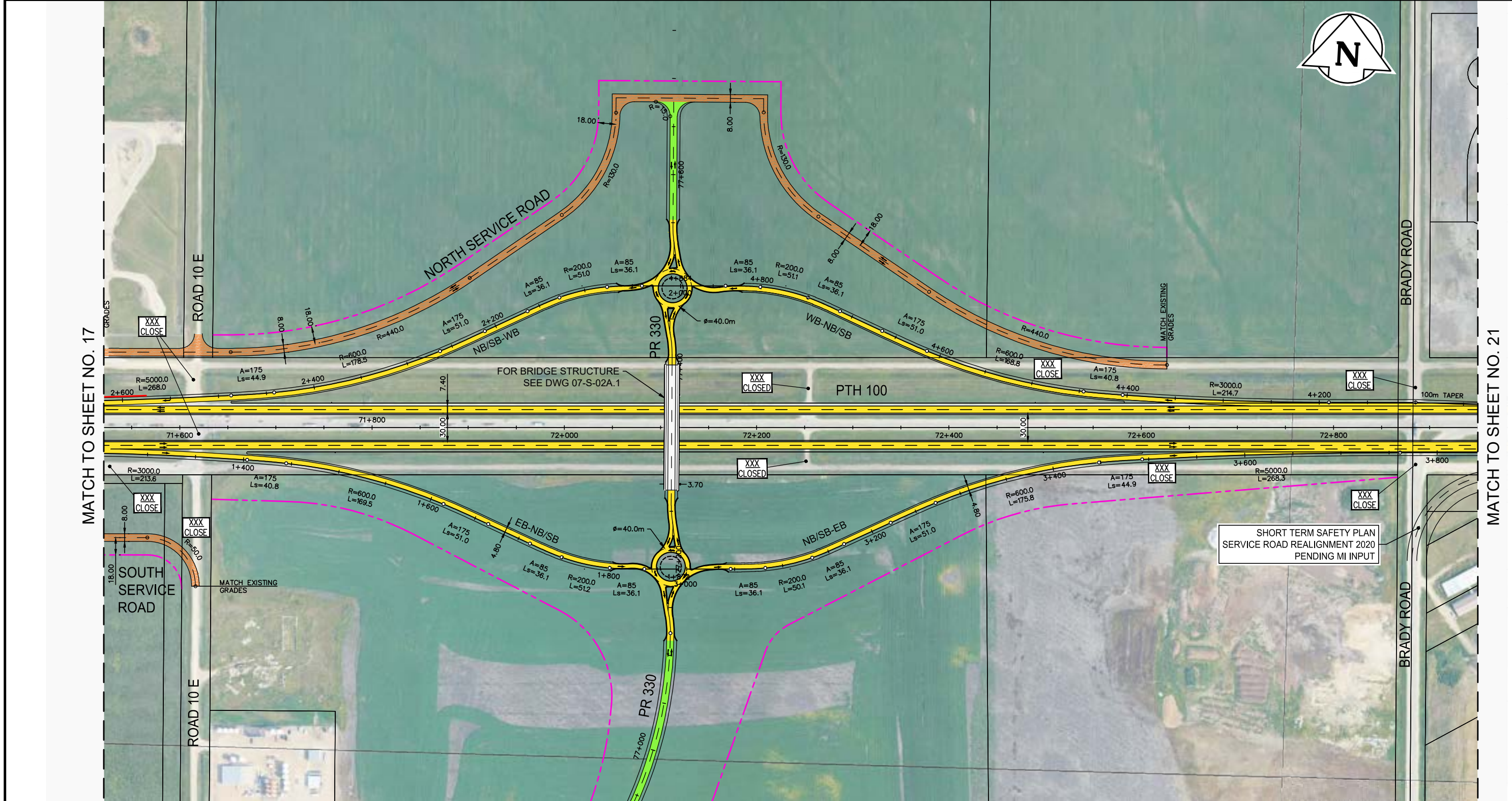
- | | | | |
|------------------------|--|-----------------------|--|
| EXISTING PROPERTY LINE | | CONCRETE | |
| PROPOSED PROPERTY LINE | | GRAVEL | |
| RETAINING WALL | | ASPHALT | |
| PROPOSED CULVERT | | MULTI-USE TRAIL | |
| RAIL | | DIRECTION OF DRAINAGE | |
| | | ROAD CLOSURE | |

NOTE:
These design documents are prepared solely for the use by the party with whom the design professional has entered into a contract and there are no representations of any kind made by the design professional to any party with whom the design professional has not entered into a contract.

METRIC
ALL MEASUREMENTS METRES,
UNLESS STATED OTHERWISE

WSP Canada Group Limited
Suite 111 - 93 Lombard Ave
Winnipeg, MB R3B 3B1
t. 204.943.3178
f. 204.943.4948
www.wsp.com

MANITOBA INFRASTRUCTURE			
SOUTH PERIMETER HIGHWAY DESIGN STUDY			
INITIAL STAGE PLANS			
PTH 100 AT CPR LA RIVIERE SUBDIVISION			
SCALE: 1:4000	DATE: 20-06-26	DWG. No. INT-100-A	SHEET. No. 17 OF 42



MATCH TO SHEET NO. 17

MATCH TO SHEET NO. 21

MATCH TO SHEET NO. 19

SHORT TERM SAFETY PLAN
SERVICE ROAD REALIGNMENT 2020
PENDING MI INPUT

LEGEND-PLAN:

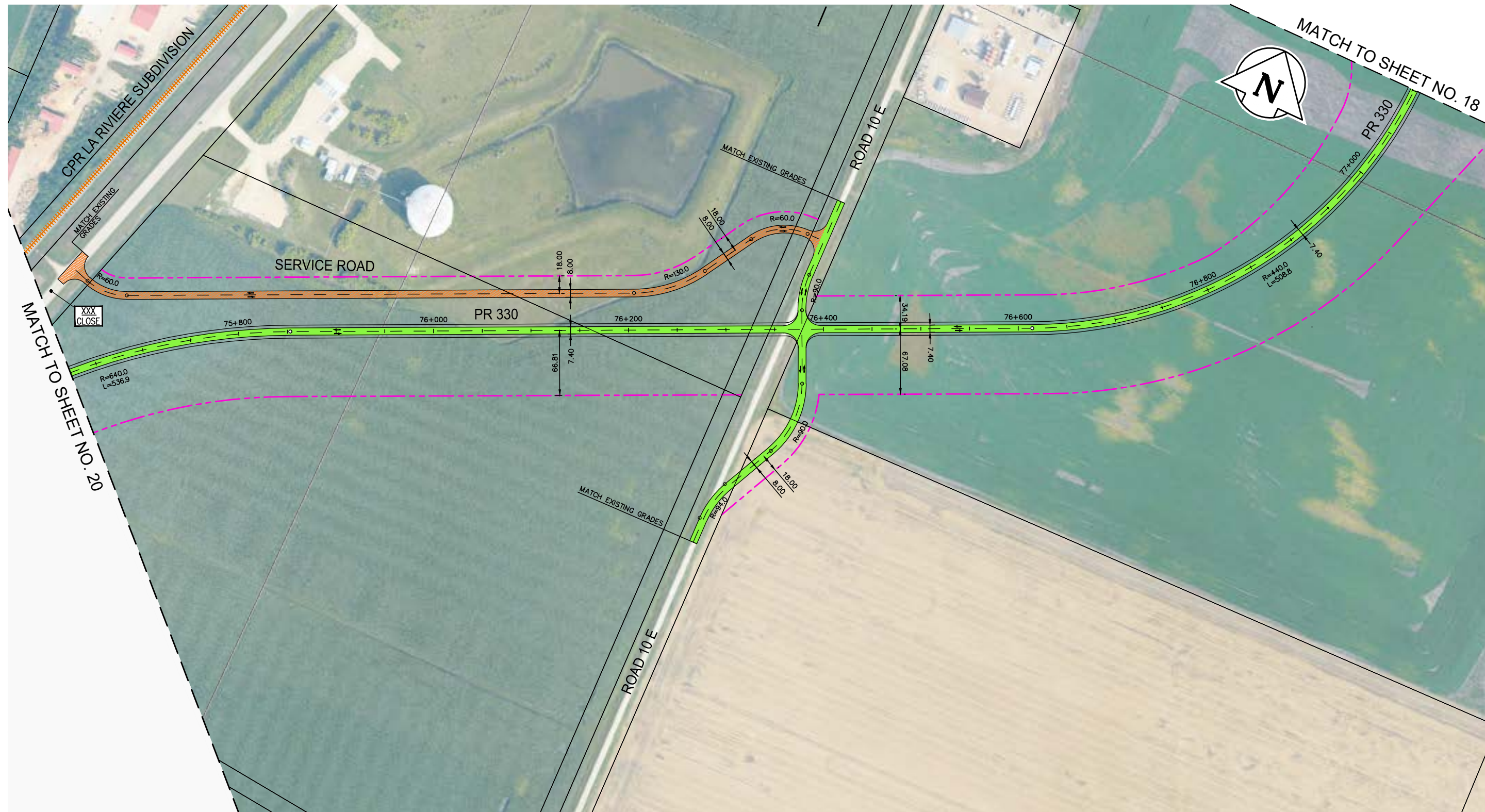
- EXISTING PROPERTY LINE
- PROPOSED PROPERTY LINE
- RETAINING WALL
- PROPOSED CULVERT
- RAIL
- CONCRETE
- GRAVEL
- ASPHALT
- MULTI-USE TRAIL
- DIRECTION OF DRAINAGE
- ROAD CLOSURE

METRIC
ALL MEASUREMENTS METRES,
UNLESS STATED OTHERWISE

WSP Canada Group Limited
Suite 111 - 93 Lombard Ave
Winnipeg, MB R3B 3B1
t. 204.943.3178
f. 204.943.4948
www.wsp.com

MANITOBA INFRASTRUCTURE			
SOUTH PERIMETER HIGHWAY DESIGN STUDY			
INITIAL STAGE PLANS			
PTH 100 AT PR 330			
SCALE: 1:4000	DATE: 20-06-26	DWG. No. INT-100-A	SHEET. No. 18 OF 42

NOTE:
These design documents are prepared solely for the use by the party with whom the design professional has entered into a contract and there are no representations of any kind made by the design professional to any party with whom the design professional has not entered into a contract.



LEGEND-PLAN:

- | | | | |
|------------------------|--|-----------------------|--|
| EXISTING PROPERTY LINE | | CONCRETE | |
| PROPOSED PROPERTY LINE | | GRAVEL | |
| RETAINING WALL | | ASPHALT | |
| PROPOSED CULVERT | | MULTI-USE TRAIL | |
| RAIL | | DIRECTION OF DRAINAGE | |
| | | ROAD CLOSURE | |

NOTE:
These design documents are prepared solely for the use by the party with whom the design professional has entered into a contract and there are no representations of any kind made by the design professional to any party with whom the design professional has not entered into a contract.

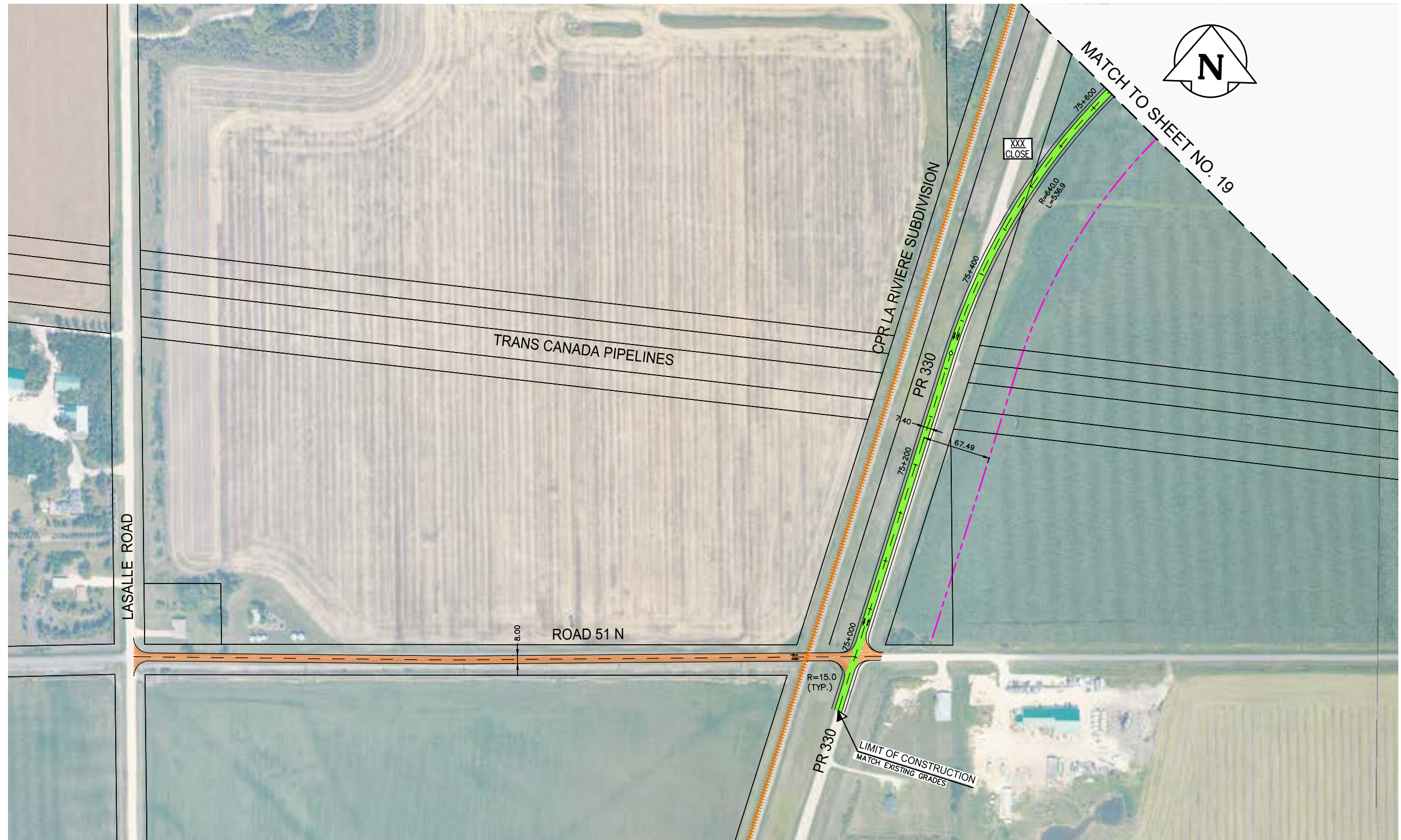
METRIC
ALL MEASUREMENTS METRES,
UNLESS STATED OTHERWISE



WSP Canada Group Limited
Suite 111 - 93 Lombard Ave
Winnipeg, MB R3B 3B1
t. 204.943.3178
f. 204.943.4948
www.wsp.com

MANITOBA INFRASTRUCTURE
SOUTH PERIMETER HIGHWAY DESIGN STUDY
INITIAL STAGE PLANS
PR 330 SOUTH OF PTH 100

SCALE: 1:4000	DATE: 20-06-26	DWG. No. INT-100-A	SHEET. No. 19 OF 42
------------------	-------------------	-----------------------	------------------------



LEGEND-PLAN:

EXISTING PROPERTY LINE		CONCRETE	
PROPOSED PROPERTY LINE		GRAVEL	
RETAINING WALL		ASPHALT	
PROPOSED CULVERT		MULTI-USE TRAIL	
RAIL		DIRECTION OF DRAINAGE	
		ROAD CLOSURE	

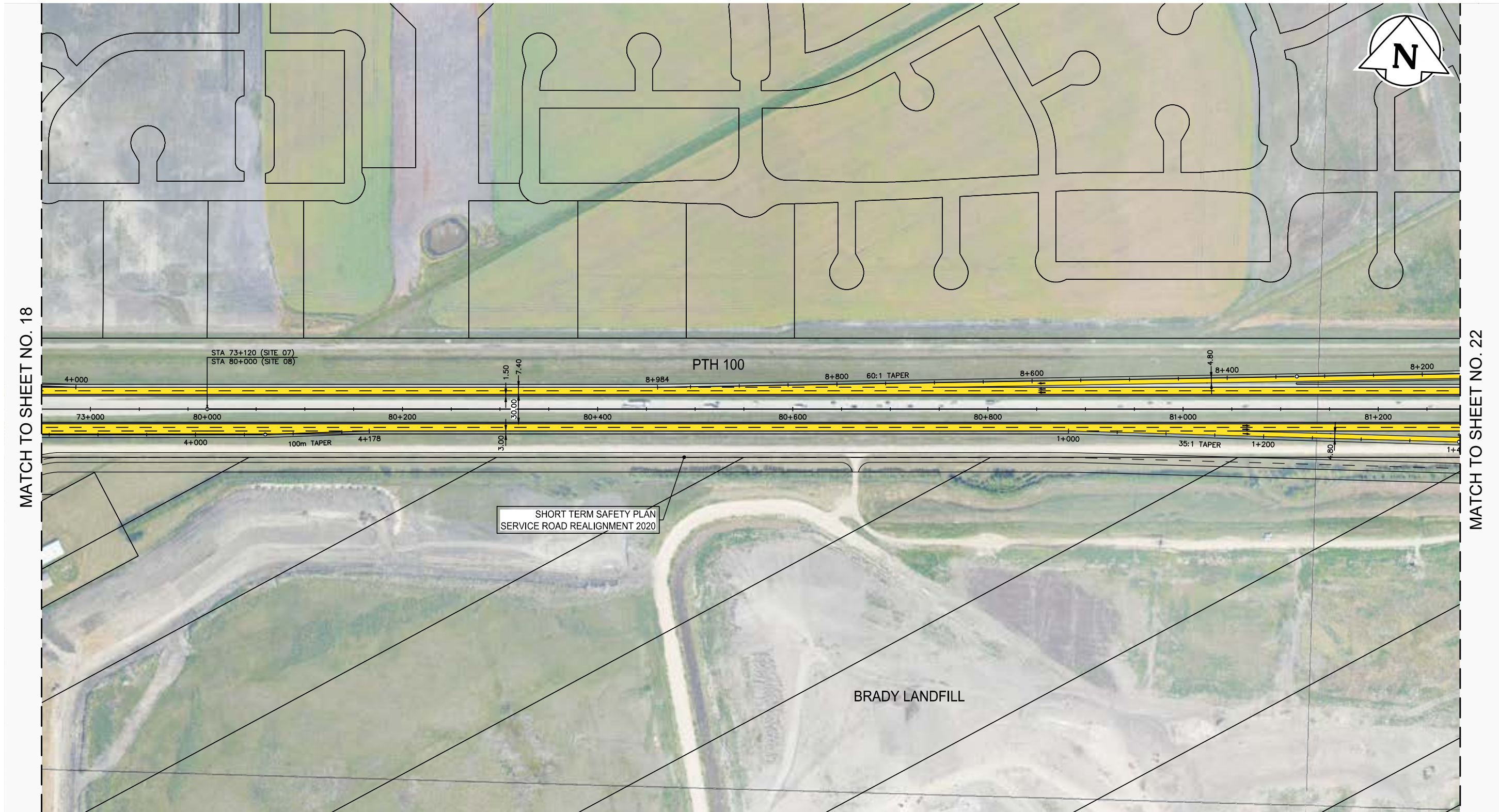
NOTE:
These design documents are prepared solely for the use by the party with whom the design professional has entered into a contract and there are no representations of any kind made by the design professional to any party with whom the design professional has not entered into a contract.

METRIC
ALL MEASUREMENTS METRES,
UNLESS STATED OTHERWISE



WSP Canada Group Limited
Suite 111 - 93 Lombard Ave
Winnipeg, MB R3B 3B1
t. 204.943.3178
f. 204.943.4948
www.wsp.com

MANITOBA INFRASTRUCTURE SOUTH PERIMETER HIGHWAY DESIGN STUDY INITIAL STAGE PLANS PR 330 SOUTH OF PTH 100			
SCALE: 1:4000	DATE: 20-06-26	DWG. No. INT-100-A	SHEET. No. 20 OF 42



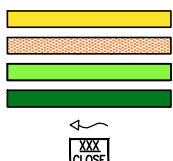
MATCH TO SHEET NO. 18

MATCH TO SHEET NO. 22



LEGEND-PLAN:

- EXISTING PROPERTY LINE
- PROPOSED PROPERTY LINE
- RETAINING WALL
- PROPOSED CULVERT
- RAIL
- CONCRETE
- GRAVEL
- ASPHALT
- MULTI-USE TRAIL
- DIRECTION OF DRAINAGE
- ROAD CLOSURE

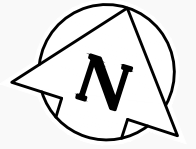
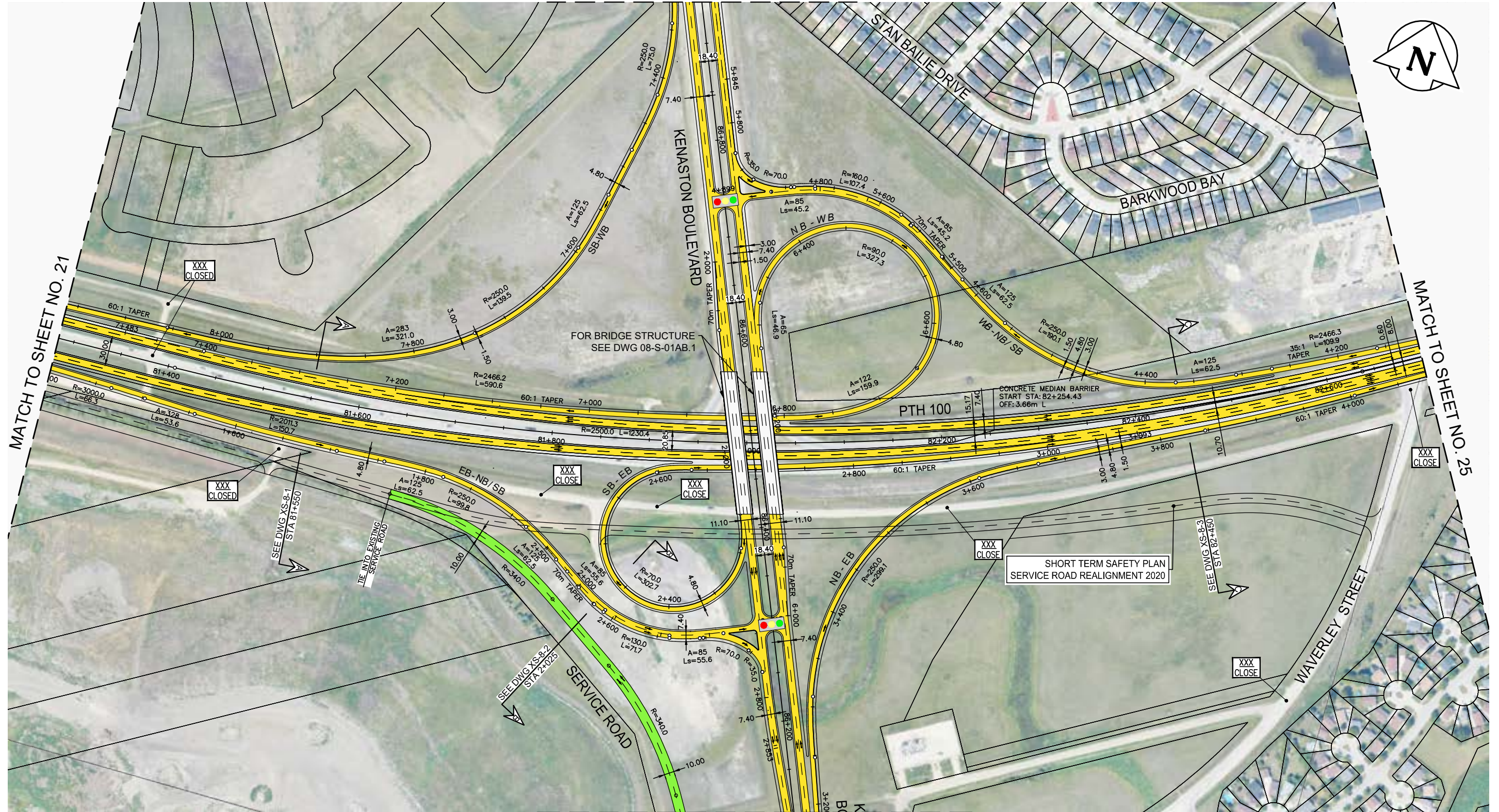


NOTE:
These design documents are prepared solely for the use by the party with whom the design professional has entered into a contract and there are no representations of any kind made by the design professional to any party with whom the design professional has not entered into a contract.

METRIC
ALL MEASUREMENTS METRES,
UNLESS STATED OTHERWISE

	WSP Canada Group Limited Suite 111 - 93 Lombard Ave Winnipeg, MB R3B 3B1 t. 204.943.3178 f. 204.943.4948 www.wsp.com		MANITOBA INFRASTRUCTURE SOUTH PERIMETER HIGHWAY DESIGN STUDY INITIAL STAGE PLANS PTH 100 AT BRADY LANDFILL	
	SCALE: 1:4000	DATE: 20-06-26	DWG. No. INT-100-A	SHEET. No. 21 OF 42

MATCH TO SHEET NO. 24



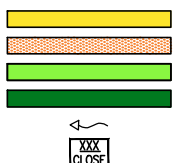
MATCH TO SHEET NO. 21

MATCH TO SHEET NO. 25

MATCH TO SHEET NO. 23

LEGEND-PLAN:

- EXISTING PROPERTY LINE
- PROPOSED PROPERTY LINE
- RETAINING WALL
- PROPOSED CULVERT
- RAIL
- CONCRETE
- GRAVEL
- ASPHALT
- MULTI-USE TRAIL
- DIRECTION OF DRAINAGE
- ROAD CLOSURE



METRIC
ALL MEASUREMENTS METRES,
UNLESS STATED OTHERWISE

NOTE:
These design documents are prepared solely for the use by the party with whom the design professional has entered into a contract and there are no representations of any kind made by the design professional to any party with whom the design professional has not entered into a contract.

WSP Canada Group Limited
Suite 111 - 93 Lombard Ave
Winnipeg, MB R3B 3B1
t. 204.943.3178
f. 204.943.4948
www.wsp.com

MANITOBA INFRASTRUCTURE			
SOUTH PERIMETER HIGHWAY DESIGN STUDY			
INITIAL STAGE PLANS			
PTH 100 AT KENASTON BOULEVARD			
SCALE:	DATE:	DWG. No.	SHEET. No.
1:4000	20-06-26	INT-100-A	22 OF 42

MATCH TO SHEET NO. 22



LEGEND-PLAN:

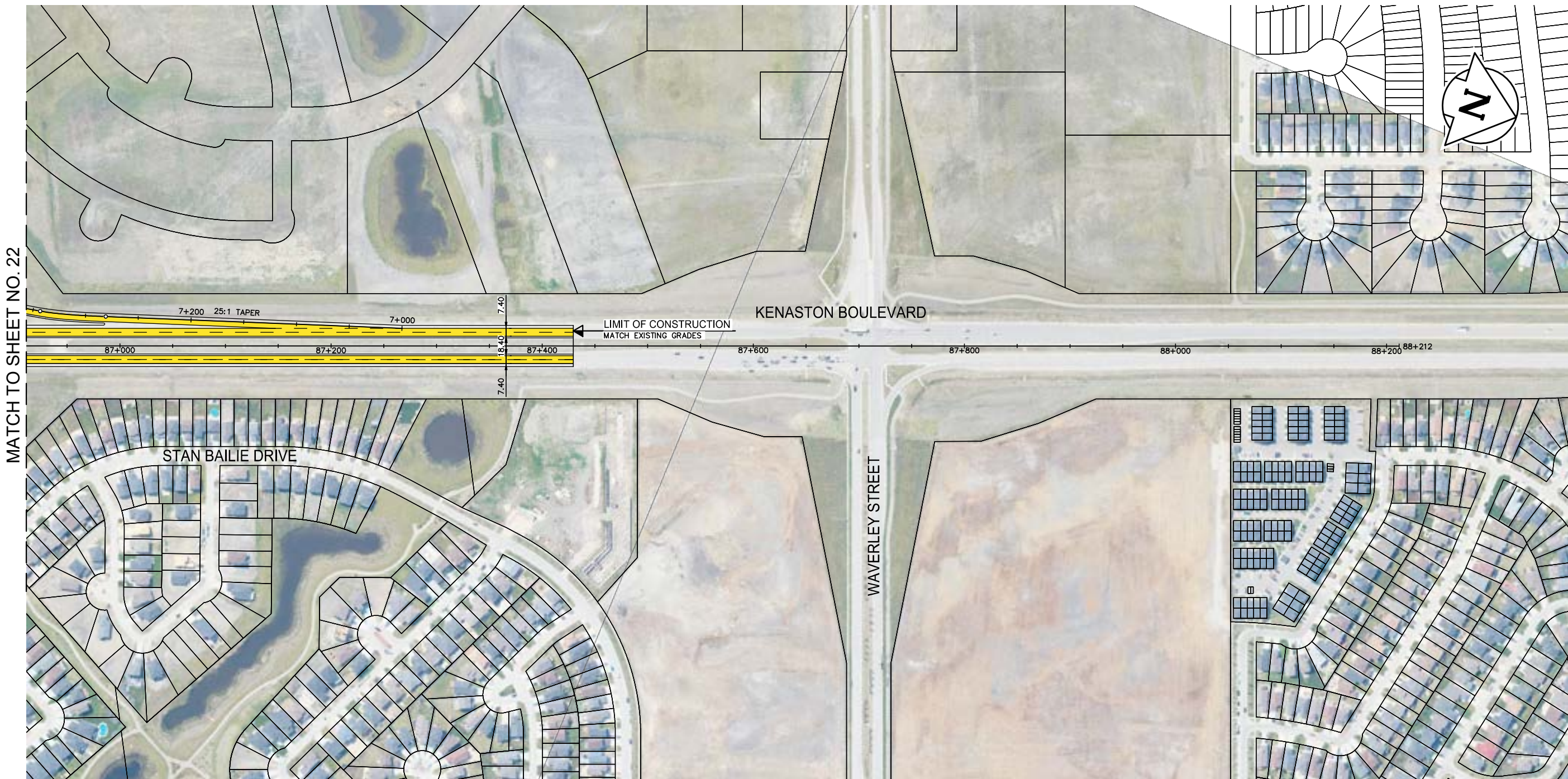
EXISTING PROPERTY LINE		CONCRETE	
PROPOSED PROPERTY LINE		GRAVEL	
RETAINING WALL		ASPHALT	
PROPOSED CULVERT		MULTI-USE TRAIL	
RAIL		DIRECTION OF DRAINAGE	
		ROAD CLOSURE	

NOTE:
These design documents are prepared solely for the use by the party with whom the design professional has entered into a contract and there are no representations of any kind made by the design professional to any party with whom the design professional has not entered into a contract.

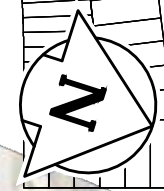
METRIC
ALL MEASUREMENTS METRES,
UNLESS STATED OTHERWISE

WSP Canada Group Limited
Suite 111 - 93 Lombard Ave
Winnipeg, MB R3B 3B1
t. 204.943.3178
f. 204.943.4948
www.wsp.com

MANITOBA INFRASTRUCTURE			
SOUTH PERIMETER HIGHWAY DESIGN STUDY			
INITIAL STAGE PLANS			
KENASTON BOULEVARD SOUTH OF PTH 100			
SCALE: 1:4000	DATE: 20-06-26	DWG. No. INT-100-A	SHEET. No. 23 OF 42



MATCH TO SHEET NO. 22



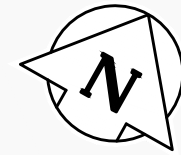
LEGEND-PLAN:

- | | | | |
|------------------------|--|-----------------------|--|
| EXISTING PROPERTY LINE | | CONCRETE | |
| PROPOSED PROPERTY LINE | | GRAVEL | |
| RETAINING WALL | | ASPHALT | |
| PROPOSED CULVERT | | MULTI-USE TRAIL | |
| RAIL | | DIRECTION OF DRAINAGE | |
| | | ROAD CLOSURE | |

NOTE:
These design documents are prepared solely for the use by the party with whom the design professional has entered into a contract and there are no representations of any kind made by the design professional to any party with whom the design professional has not entered into a contract.

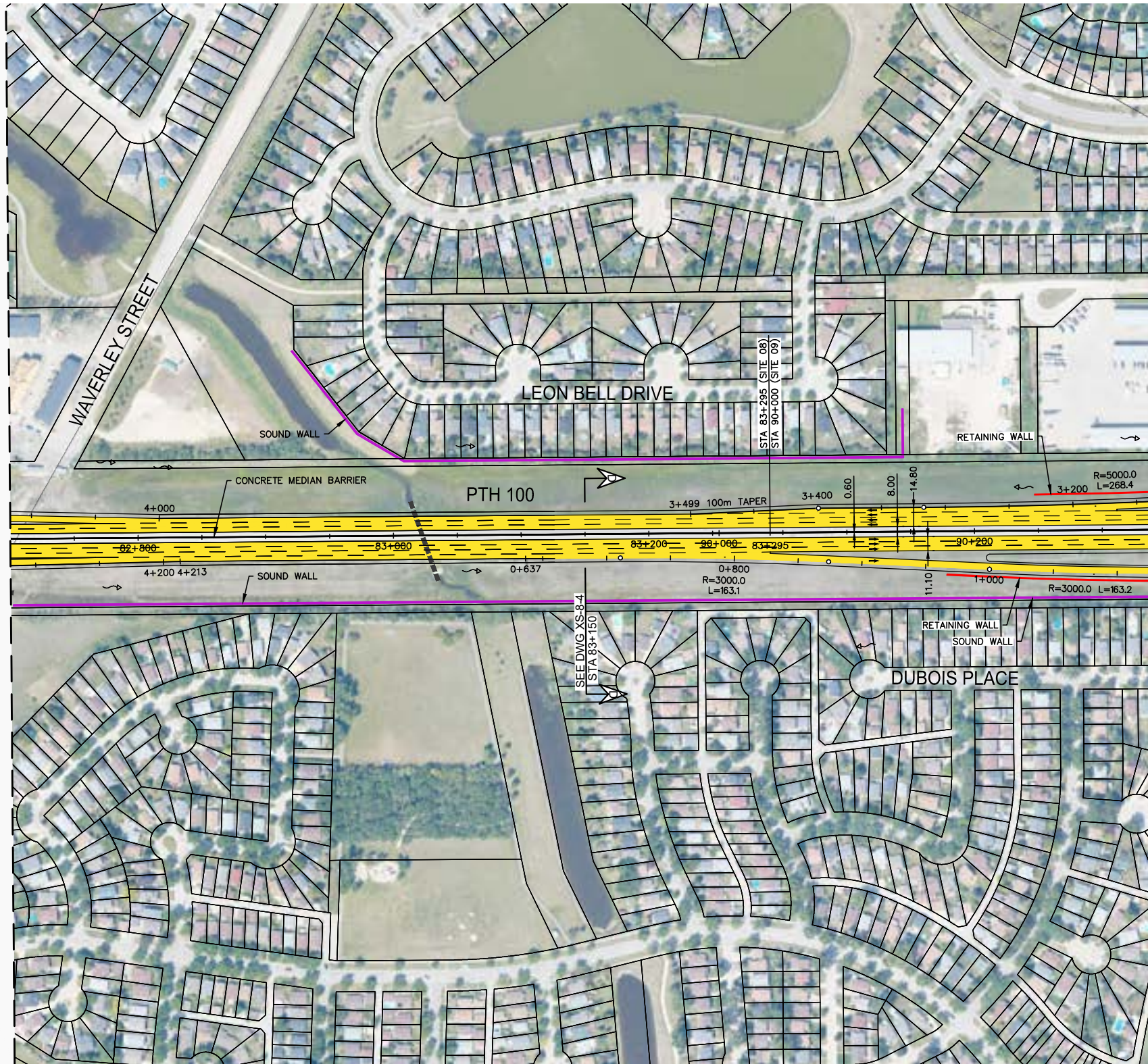
METRIC
ALL MEASUREMENTS METRES,
UNLESS STATED OTHERWISE

	WSP Canada Group Limited Suite 111 - 93 Lombard Ave Winnipeg, MB R3B 3B1 t. 204.943.3178 f. 204.943.4948 www.wsp.com			MANITOBA INFRASTRUCTURE SOUTH PERIMETER HIGHWAY DESIGN STUDY INITIAL STAGE PLANS KENASTON BOULEVARD NORTH OF PTH 100			
	SCALE:	DATE:	DWG. No.	SHEET. No.			
1:4000	20-06-26	INT-100-A	24 OF 42				



MATCH TO SHEET NO. 22

MATCH TO SHEET NO. 26



LEGEND-PLAN:

EXISTING PROPERTY LINE		CONCRETE	
PROPOSED PROPERTY LINE		GRAVEL	
RETAINING WALL		ASPHALT	
PROPOSED CULVERT		MULTI-USE TRAIL	
RAIL		DIRECTION OF DRAINAGE	
		ROAD CLOSURE	

NOTE:
These design documents are prepared solely for the use by the party with whom the design professional has entered into a contract and there are no representations of any kind made by the design professional to any party with whom the design professional has not entered into a contract.

METRIC
ALL MEASUREMENTS METRES,
UNLESS STATED OTHERWISE

WSP Canada Group Limited
Suite 111 - 93 Lombard Ave
Winnipeg, MB R3B 3B1
t. 204.943.3178
f. 204.943.4948
www.wsp.com

MANITOBA INFRASTRUCTURE			
SOUTH PERIMETER HIGHWAY DESIGN STUDY			
INITIAL STAGE PLANS			
PTH 100			
SCALE:	DATE:	DWG. No.	SHEET. No.
1:4000	20-06-26	INT-100-A	25 OF 42