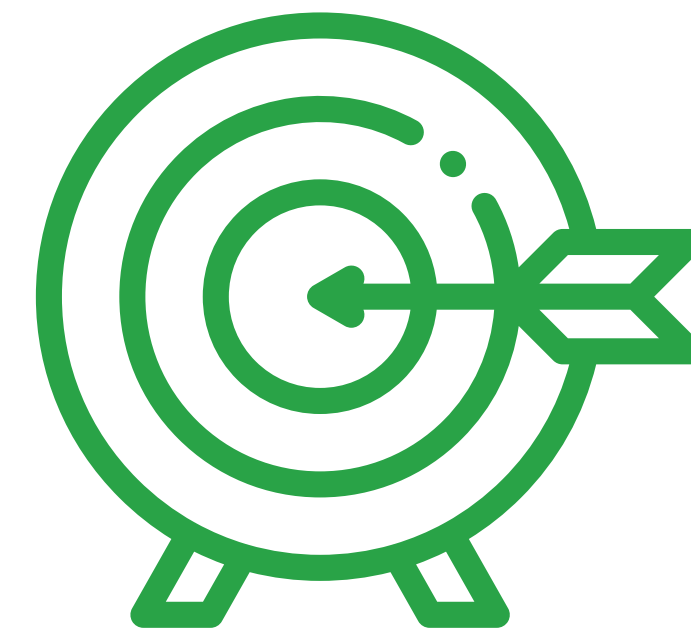


Design and Construction of an Interchange at PTH 100 and PTH 3

Stage 1 Engagement

August 2023





Purpose

To **construct an interchange on PTH 100 (south Perimeter) at PTH 3 (McGillivray Boulevard)**, including reconstruction of PTH 100, PTH 2, and PTH 3 to align with the recommended design in the South Perimeter Highway Design Study.

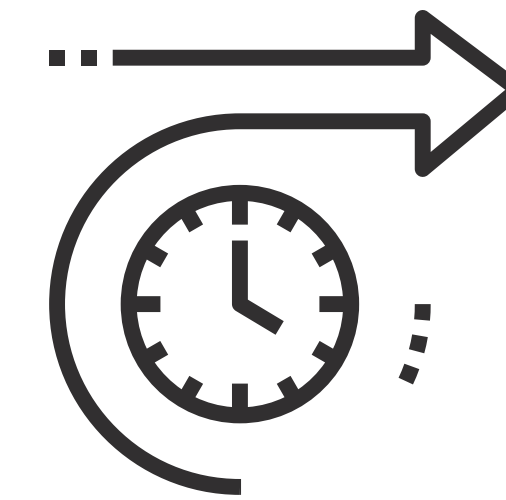
The **intent** of Stage 1 Engagement is to:



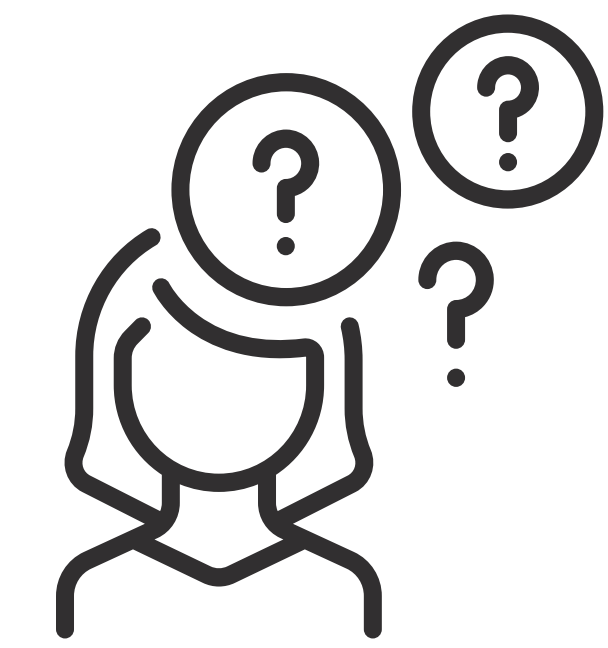
Inform you of the **purpose and scope** of the project.



Identify any new or updated information to consider when refining the roadway and interchange design, including access management considerations.

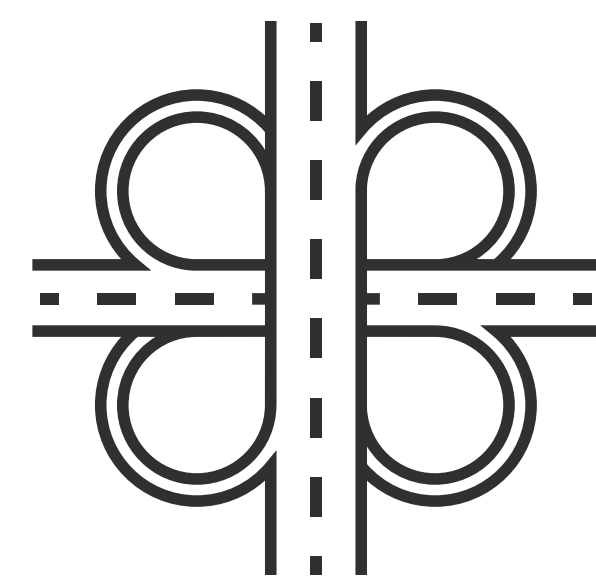


Provide information on **project timing**.



Offer an opportunity to **ask questions** about the project.

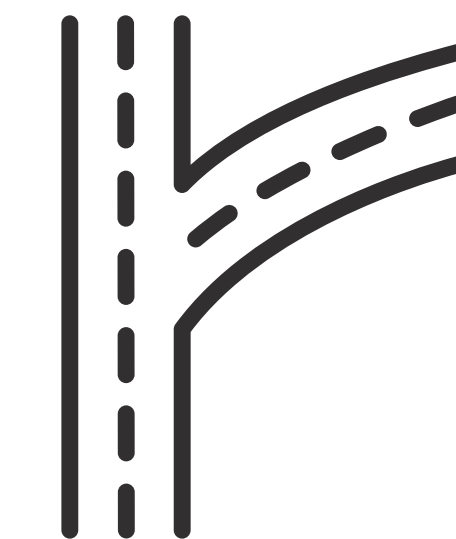
WSP Canada Inc. (WSP), a planning and engineering firm, was engaged by the Manitoba government to be the owner's engineer for the **design and construction of the interchange at PTH 100 and PTH 3.**



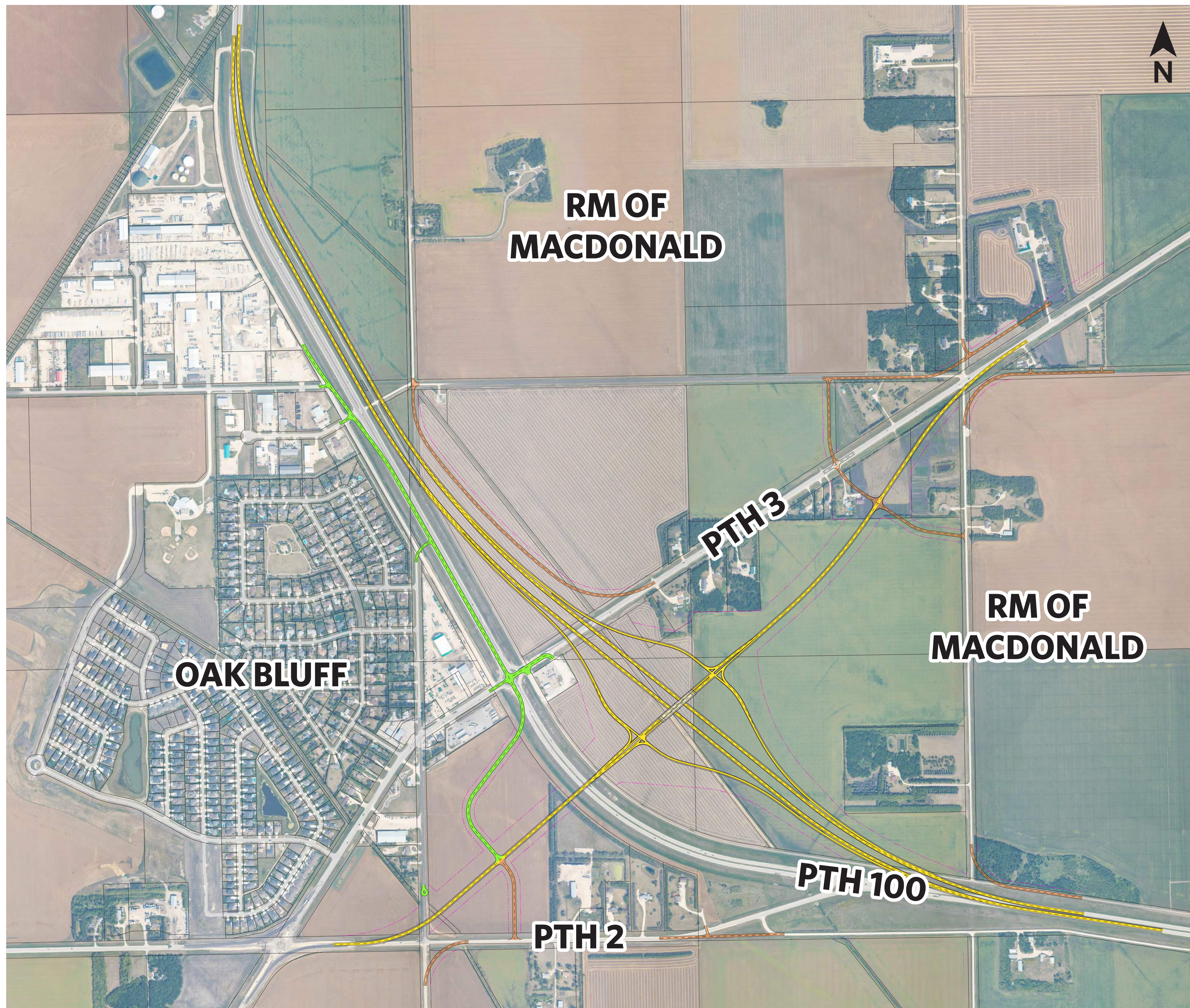
This project will **complete the detailed design** and **construct the interchange.**



The design is based on the roadway and interchange design from the **South Perimeter Highway Design Study.**



The project will **refine service road alignments and access connections** in the project area.



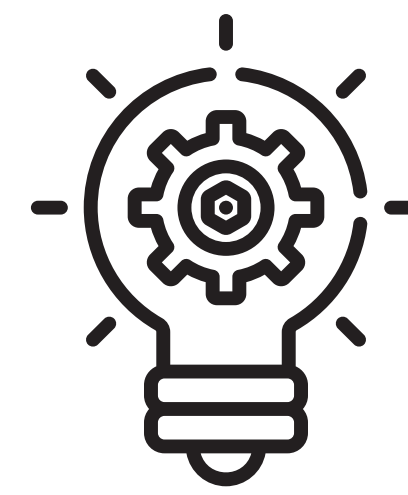
The functional design for the interchange was part of the **South Perimeter Highway Design Study, completed in 2020.**

A functional design is an early phase of the design process in which the road right-of-way and roadway layout are established based on projected travel patterns and demand.

The functional design was **informed by both technical studies and public input and feedback** throughout the South Perimeter Highway Design project.

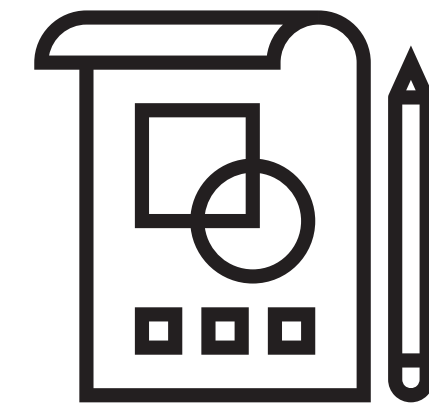
Project Timeline

PTH 100 / PTH 3 Interchange



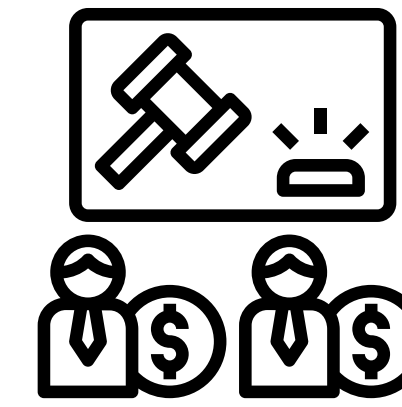
Project preparation

SPRING / SUMMER 2023



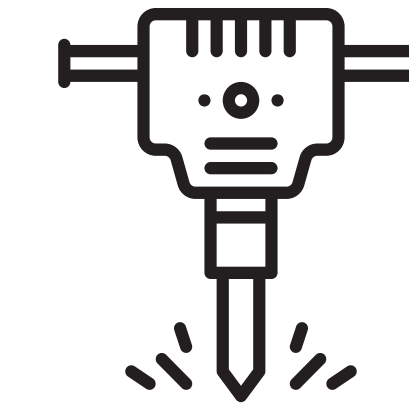
Refine roadway and interchange design

FALL 2023 / WINTER 2024



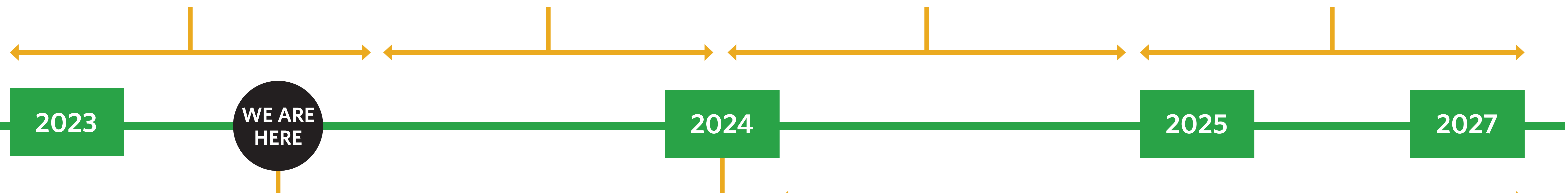
Procurement of design build contractor

2024



Detailed design and construction

2025-2027



Public Engagement Stage 1
Present project scope, background information and collect feedback

SUMMER 2023



Public Engagement Stage 2
Present refined roadway and interchange design and collect feedback

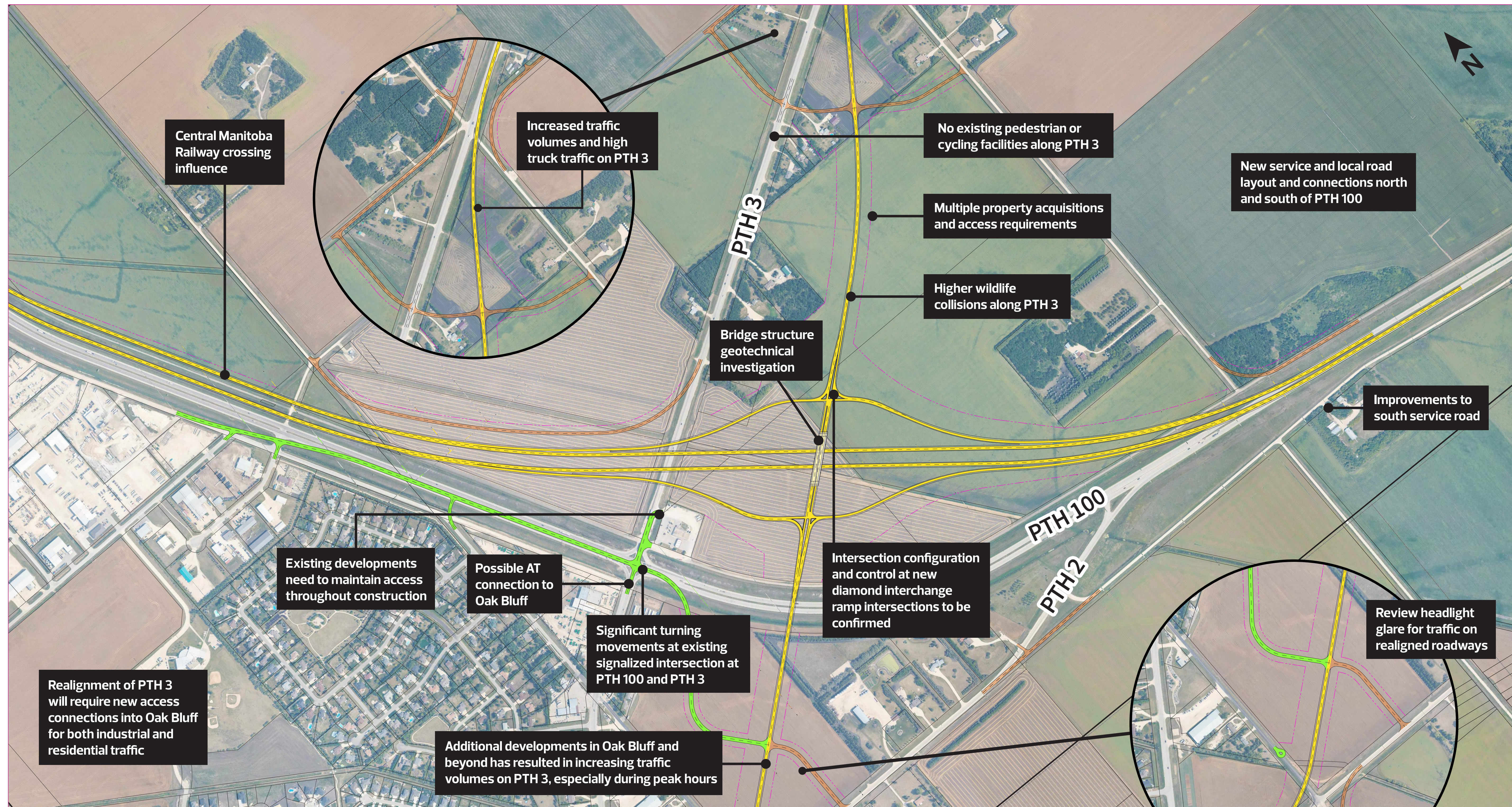
WINTER 2024



Ongoing communications

2024-2027



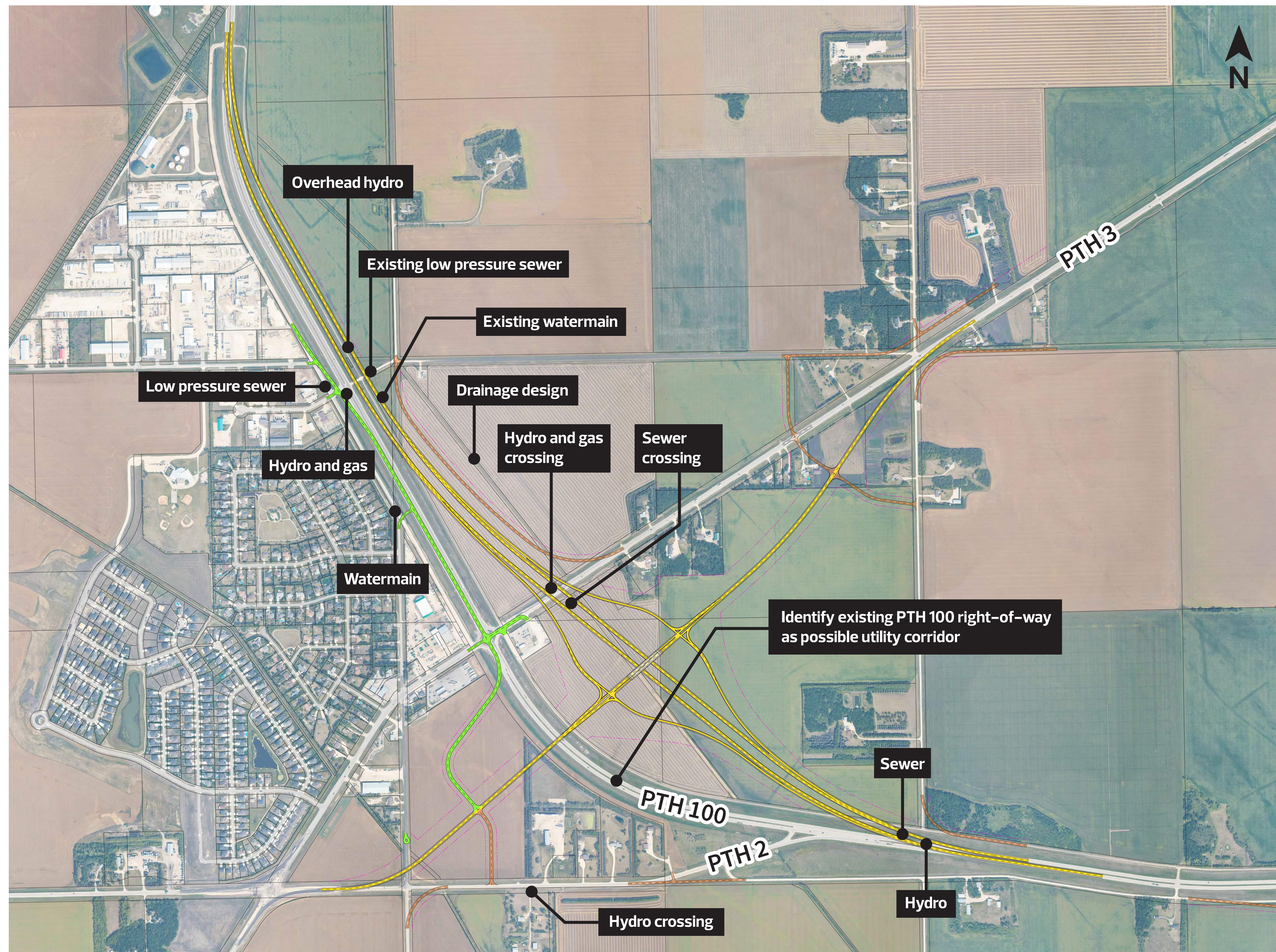


LEGEND

- | | |
|--|--|
| — Concrete | — Existing Property Lines |
| — Gravel | - - - Proposed Property Lines |
| — Asphalt | |

General Issues and Considerations

- Land acquisition for interchange configuration
- Soil surveys along each road alignment and access requirements

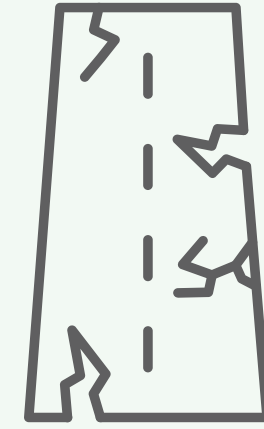


LEGEND

- Concrete
- Gravel
- Asphalt
- Existing Property Lines
- - - Proposed Property Lines
- + + + + + Rail

Utility Considerations

- Utilities throughout - prioritize relocation and protection solutions and coordination
- Ensure right-of-way limits do not restrict drainage design and meet standard ditch widths and grades



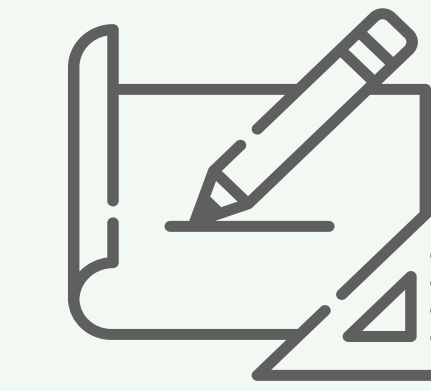
EXISTING CONDITIONS AND DESIGN REVIEW

- » Review South Perimeter Highway Design Study
- » Review Environmental Impact Study Report
- » Conduct utility and geotechnical field investigations



STAGE 1 LANDOWNER AND STAKEHOLDER ENGAGEMENT

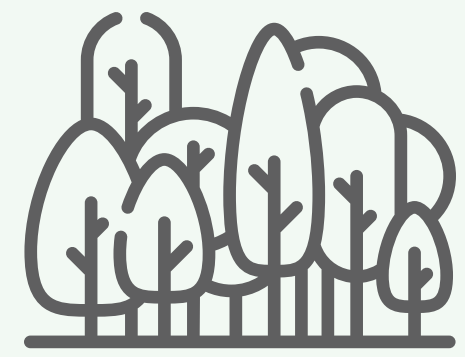
- » Meet with landowners and stakeholders
- » Inform landowners and stakeholders of the project purpose and scope
- » Collect feedback and answer questions



REFINE THE ROADWAY AND INTERCHANGE DESIGN

- » Undertake utility review and design and geotechnical analysis
- » Refine illumination, drainage, pavement, roadway, and structure design
- » Review and address traffic signal phasing and traffic staging
- » Complete independent road safety audit and cost estimates
- » Confirm right-of-way and land acquisition requirements

The following technical studies and applications will be completed:



**PHASE 1
ENVIRONMENTAL SITE
ASSESSMENT**



**ENVIRONMENTAL ACT
LICENCE APPLICATION**

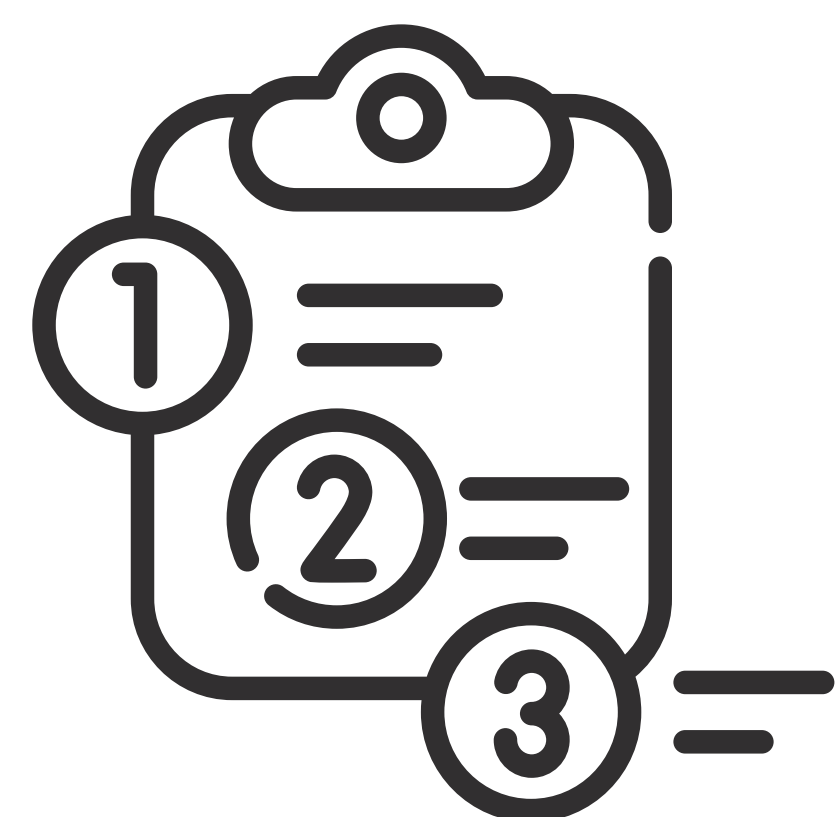
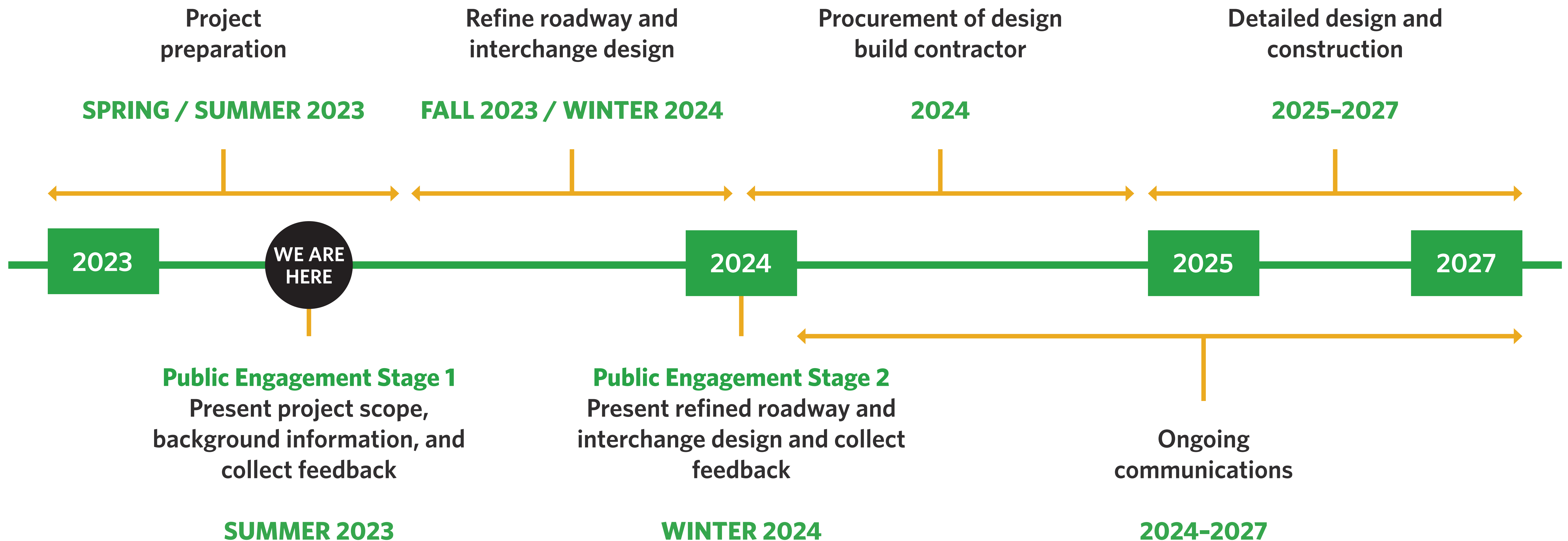


**HERITAGE RESOURCES
IMPACT ASSESSMENT**



**NOISE
STUDY**





After completion of Stage 1 Engagement, the project team will refine the roadway and interchange design and begin the process of procuring the design build contractor.

Stage 2 Engagement will include presenting the refined roadway and interchange design and collecting feedback.

Thank you

for participating in the engagement process for the design and construction of the interchange at PTH 100 and PTH 3.

For additional information, please contact:

Lauren Lange, Engagement Lead

E: lauren.lange@wsp.com

T: 204-259-1919