

A.2 Location of Horizon Colony Farms Potential Manure Application Fields.

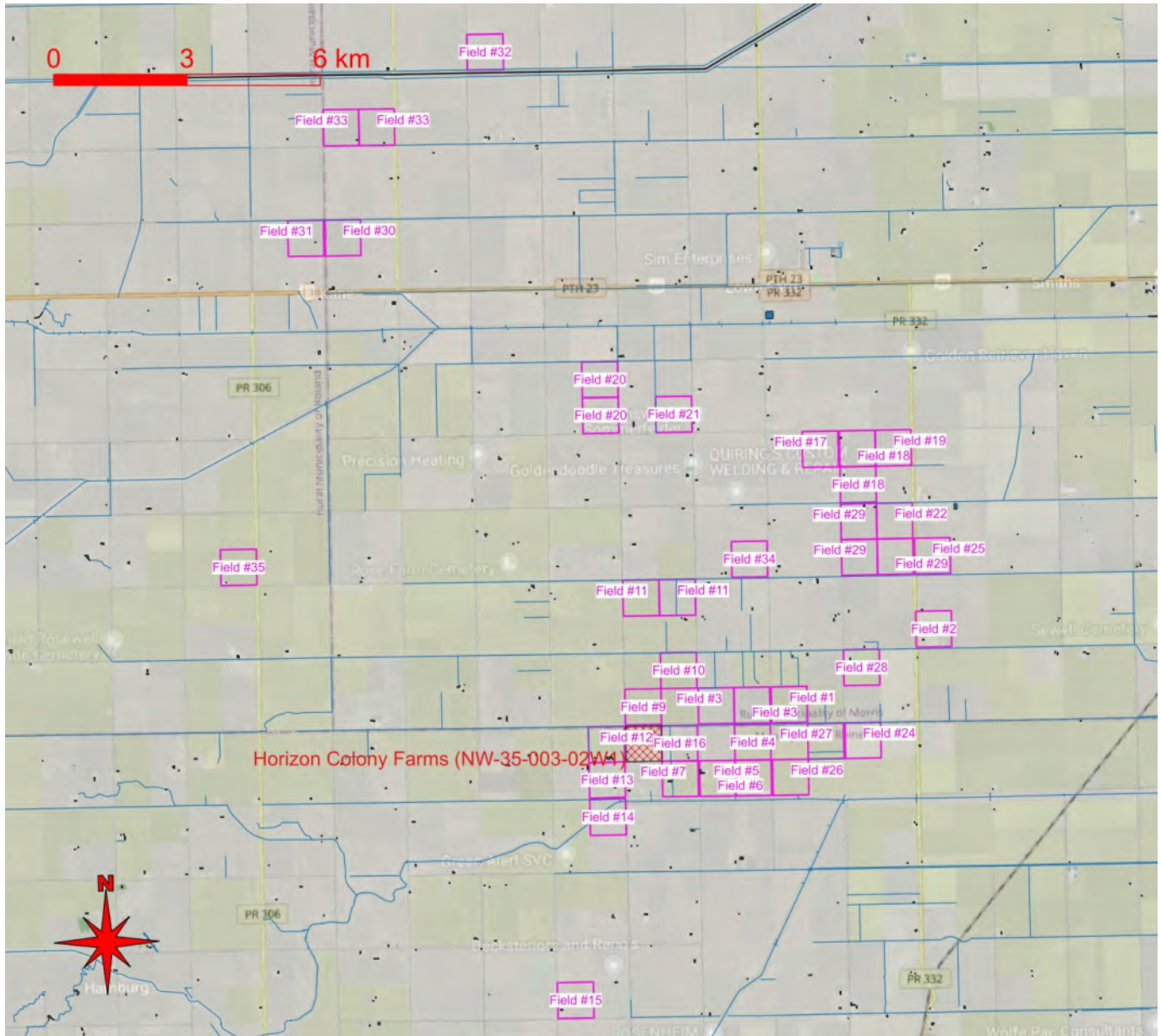


FIGURE 3: HORIZON COLONY FARMS QUARTERS

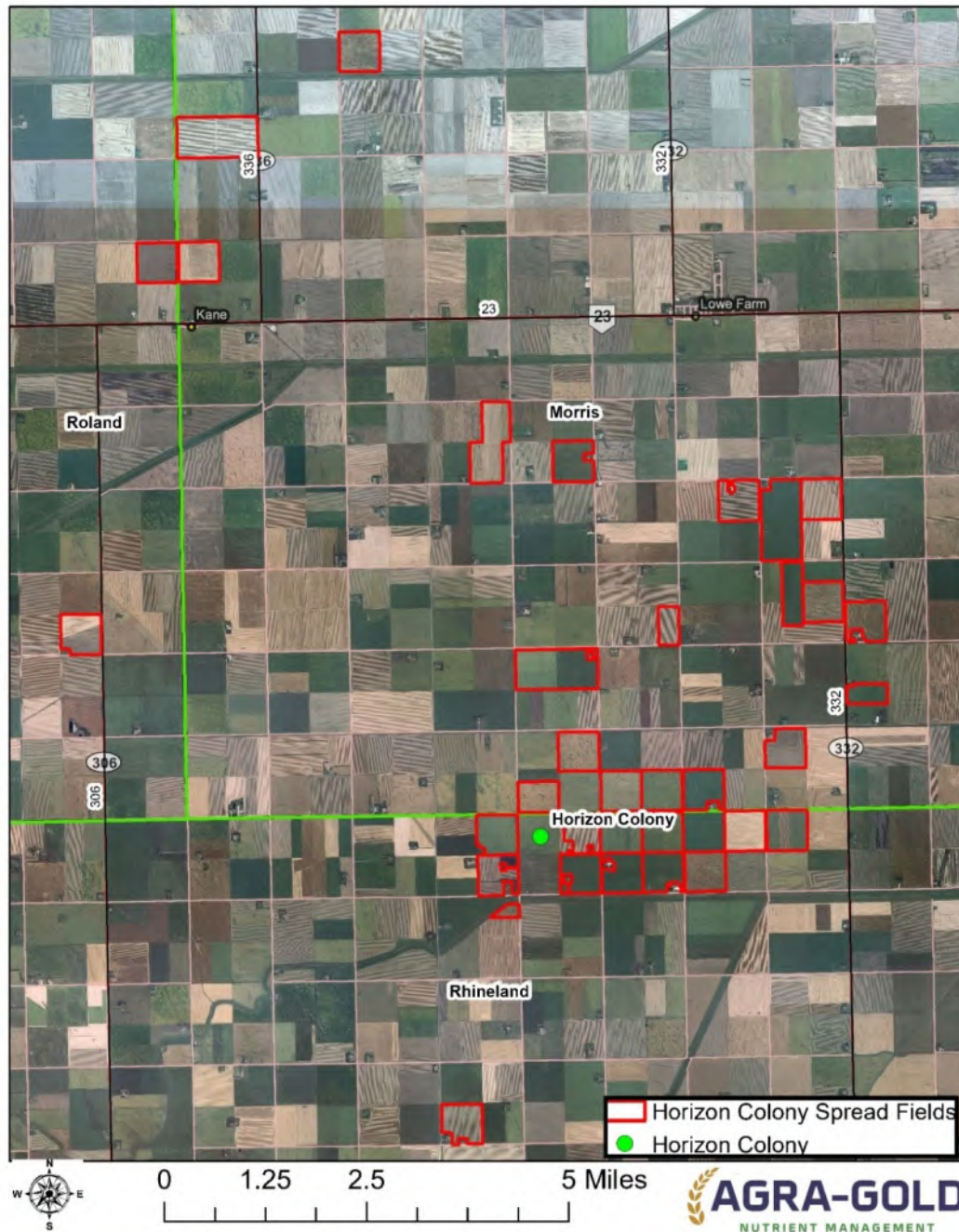
A.3 Description of Horizon Colony Farms Manure Application Fields.

Table A.3: Properties and Manure Application Fields (continued)				
Roll Number	Field ID#	Field Name	Legal Description	Area (Acres)
Rural Municipality of Roland #169				
89000.000	31	Kane West	NE-01-005-03W1	160
8700.000	35	Nicky	SE-14-004-04W1	153.12
Rural Municipality of Morris #152				
98000.000	20	CW	SE-27-004-02W1	32
98100.000	20	CW	SE-27-004-02W1	32
97900.000	20	CW	SE-27-004-02W1	64
97100.000	20	CW	NE-27-004-02W1	112
114700.000	33	Garth Acres	SE-18-005-02W1	160
114800.000	33	Garth Acres	SW-18-005-02W1	159
80300.000	9	Wiebe North	SW-02-004-02W1	120
79600.000	10	Kehler	NE-02-004-02W1	153.43
116600.000	32	Silver	SW-21-005-02W1	154.13
9400.000	29	Sawatzky	SE-17-004-01W1	78.53
9600.000	29	Sawatzky	SW-17-001-01W1	45
9200.000	29	Sawatzky	NW-17-004-01W1	80
9100.000	22	Thiessen	NE-17-004-01W1	78.81
4050.000	1	Dennis	SW-06-004-01W1	151
107900.000	30	Kane East	NW-06-005-02W1	160
3250.000	28	Tim	NW-05-004-01W1	144.63
86100.000	11	Jenz	NW-11-004-02W1	160
86000.000	11	Peter	NE-11-004-02W1	160
79400.000	3	Klassen	SE-01-004-02W1	160
79500.000	3	Siemens	SW-01-004-02W1	160
10900.000	18	Willy NW	NW-20-004-01W1	150
11200.000	18	Willy SW	SW-20-004-01W1	160
10800.000	19	Randall	NE-20-004-01W1	80
10700.000	19	Randall	NE-20-004-01W1	77.63
5450.000	2	Tarmac	SW-09-004-01W1	39.26
5400.000	2	Tarmac	SW-09-004-01W1	39.26
87800.000	34	Ruby	SE-13-004-01W1	80
96950.000	21	Corny	SE-26-004-02W1	153.52
10300.000	17	Ken Reimer	NE-19-004-01W1	160
8900.000	25	Falk	SW-16-004-01W1	157.06

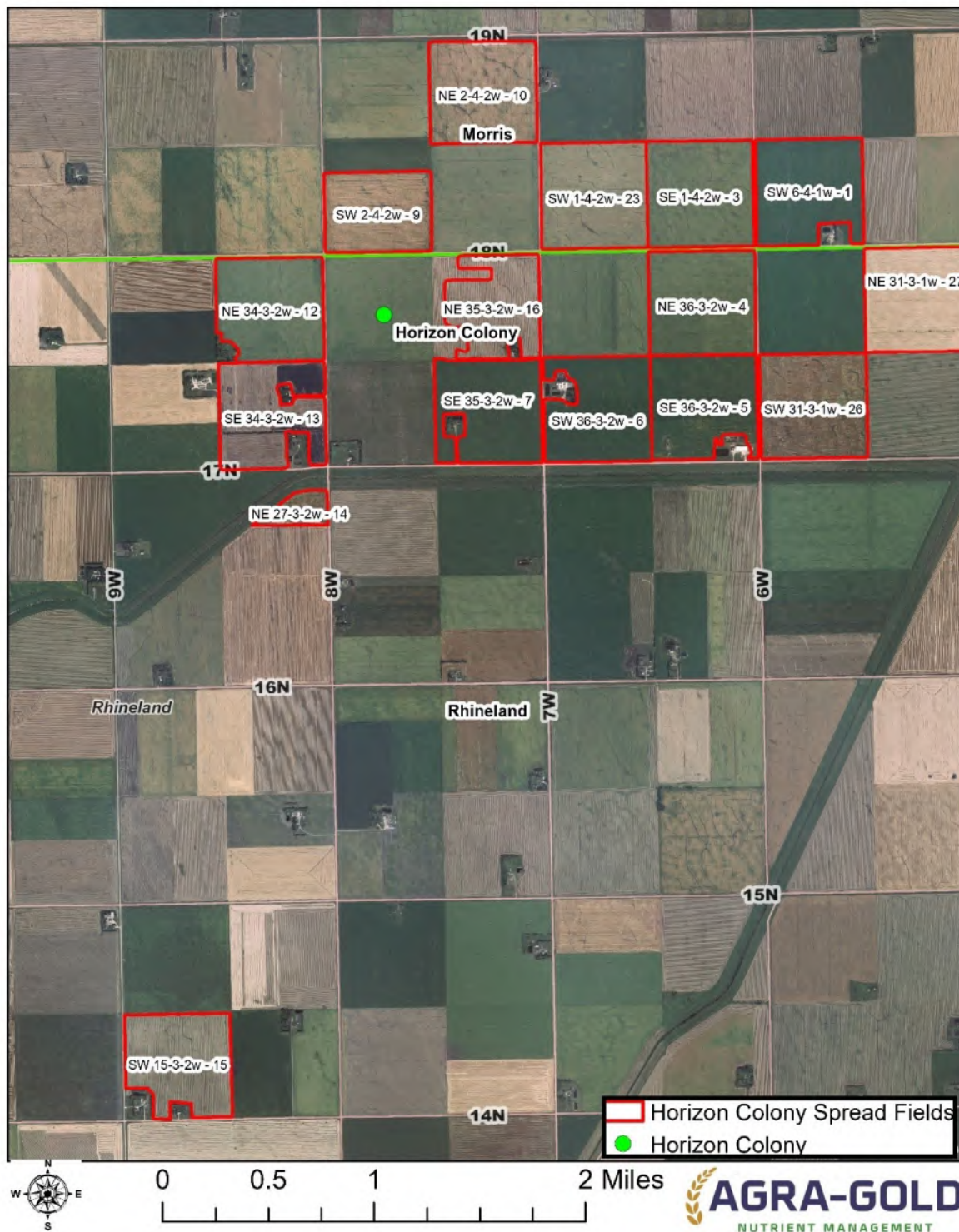
Table A.3: Properties and Manure Application Fields (continued)				
Roll Number	Field ID#	Field Name	Legal Description	Area (Acres)
Municipality of Rhineland #164				
292800.000	H	Home Site*	NW-35-003-02W1	N/A
325850.000	27	Wieler NE	NE-31-003-01W1	80
325800.000	27	Wieler NE	NE-31-003-01W1	80
326100.000	26	Wieler SW	SW-31-003-01W1	156.22
293300.000	4	Braun NE	NE-36-003-02W1	160
293600.000	6	Braun SW	SW-36-003-02W1	134.16
293550.000	5	Braun SE	SE-36-003-02W1	125.23
292400.000	13	Martins	SE-34-003-02W1	77.27
292500.000	13	Martins	SE-34-003-02W1	68.14
292200.000	12	Melba	NE-34-003-02W1	160
326300.000	24	Hoffmann	NW-32-003-01W1	160
278150.000	15	Horndean	SW-15-003-02W1	145.45
287400.000	14	Wedge	NE-27-003-02W1	23.8
293000.000	7	Bergman	SE-35-003-02W1	148.09
292725.000	16	Dueck**	NE-35-003-02W1	80
292700.000	16	Dueck**	NE-35-003-02W1	75.4
Note: *Home Site: This quarter is used almost exclusively for structures including residences, community buildings, and livestock facilities. ** Location of Current and Future Turkey Barns				

F.2 Manure Applications Field Maps

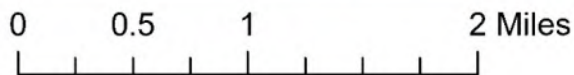
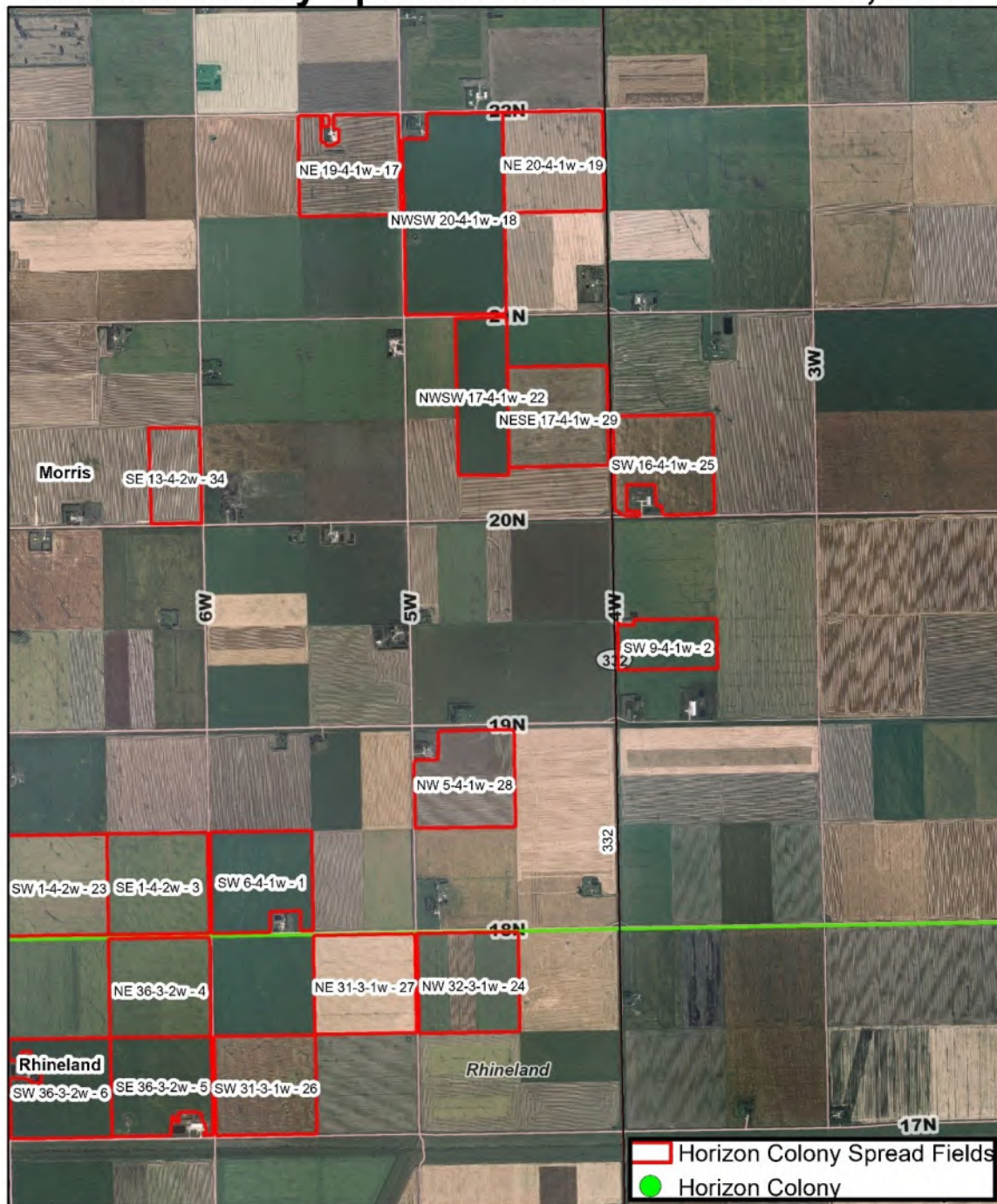
Horizon Colony Spread Fields - Overview June 18, 2024



Horizon Colony Spread Fields - South June 18, 2024



Horizon Colony Spread Fields - East June 18, 2024

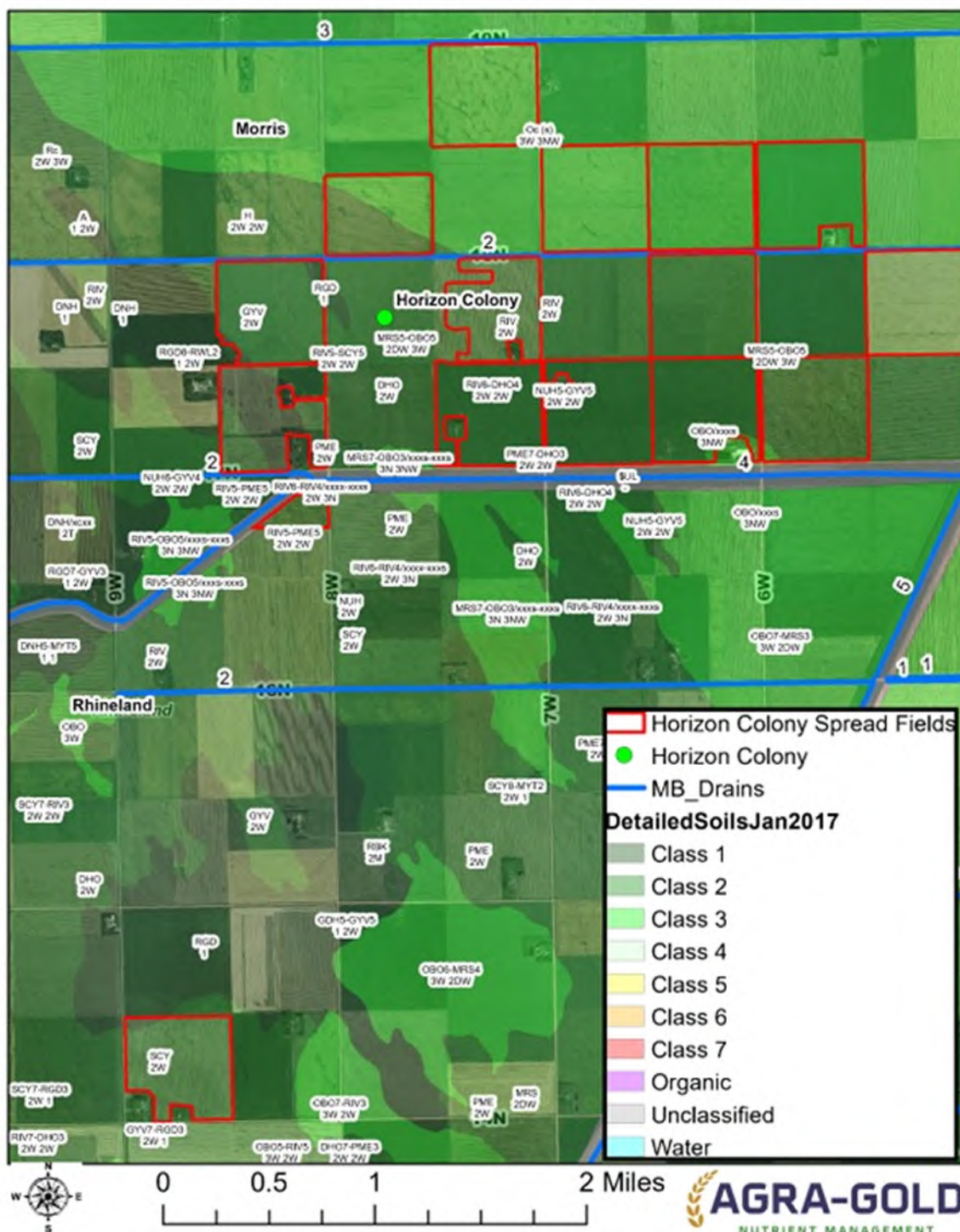


Horizon Colony Spread Fields - NW June 18, 2024

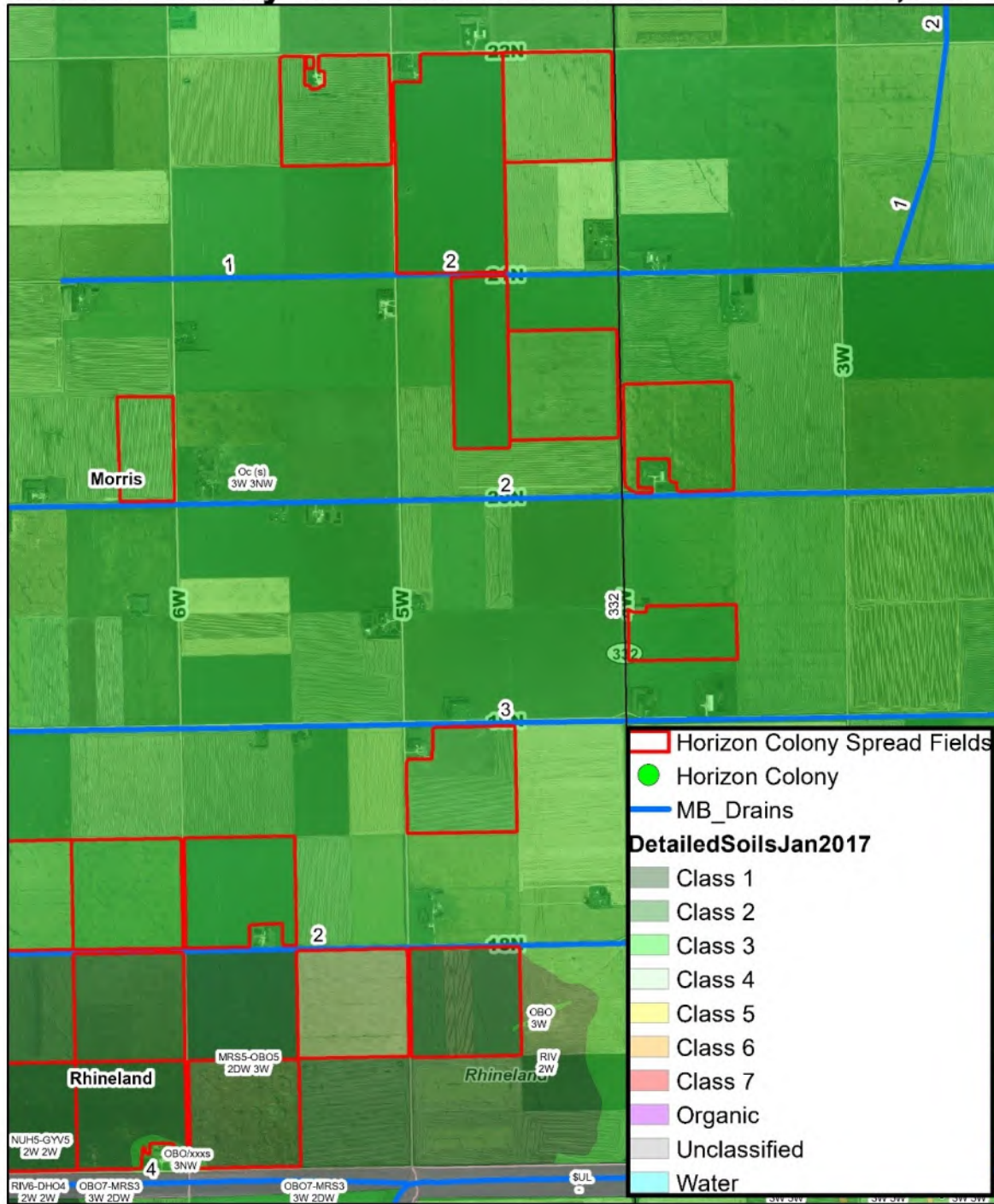


Appendix G: MB Drains and Soils

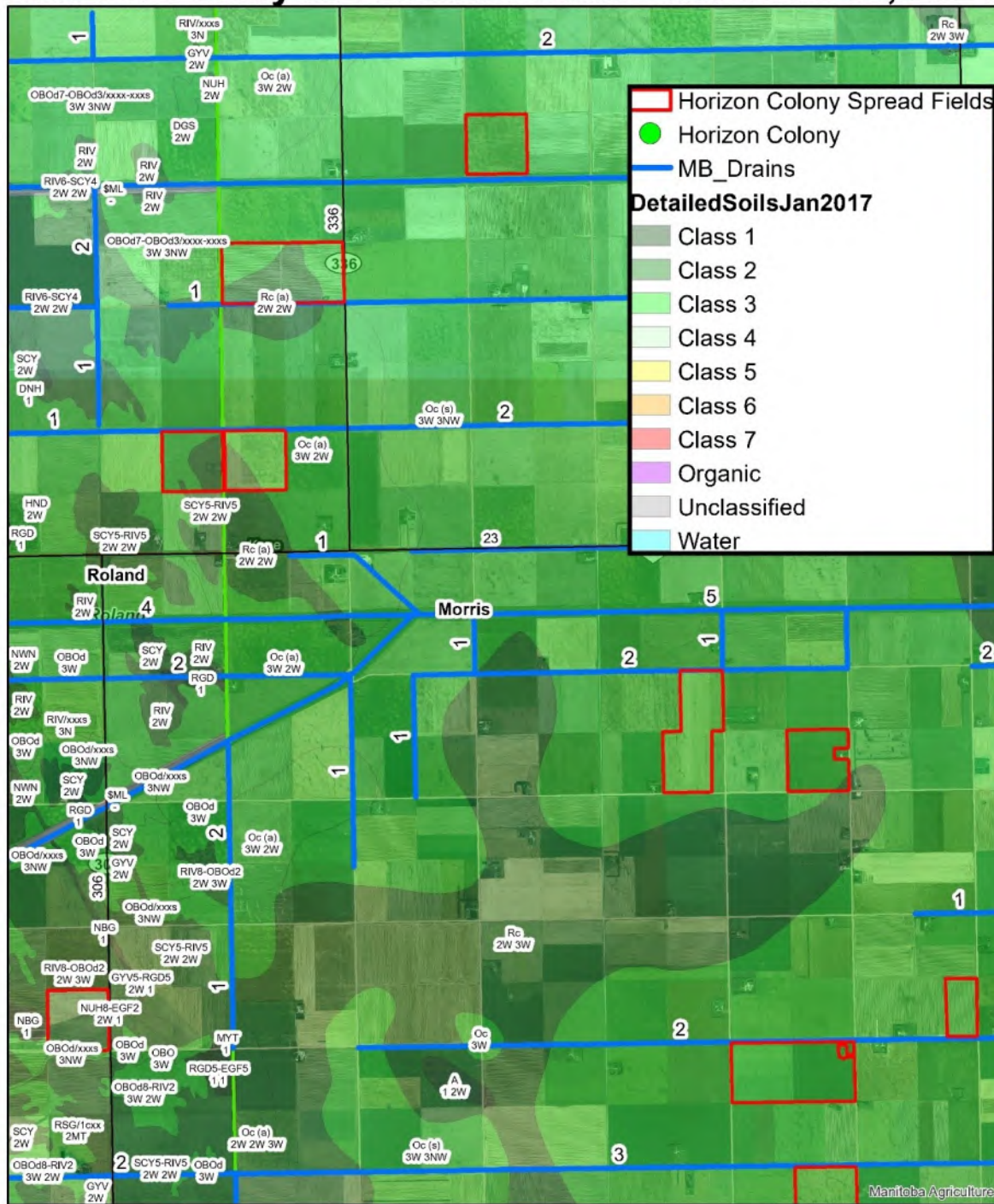
Horizon Colony MB Drains / Soils - South June 18, 2024



Horizon Colony MB Drains / Soils - East June 18, 2024

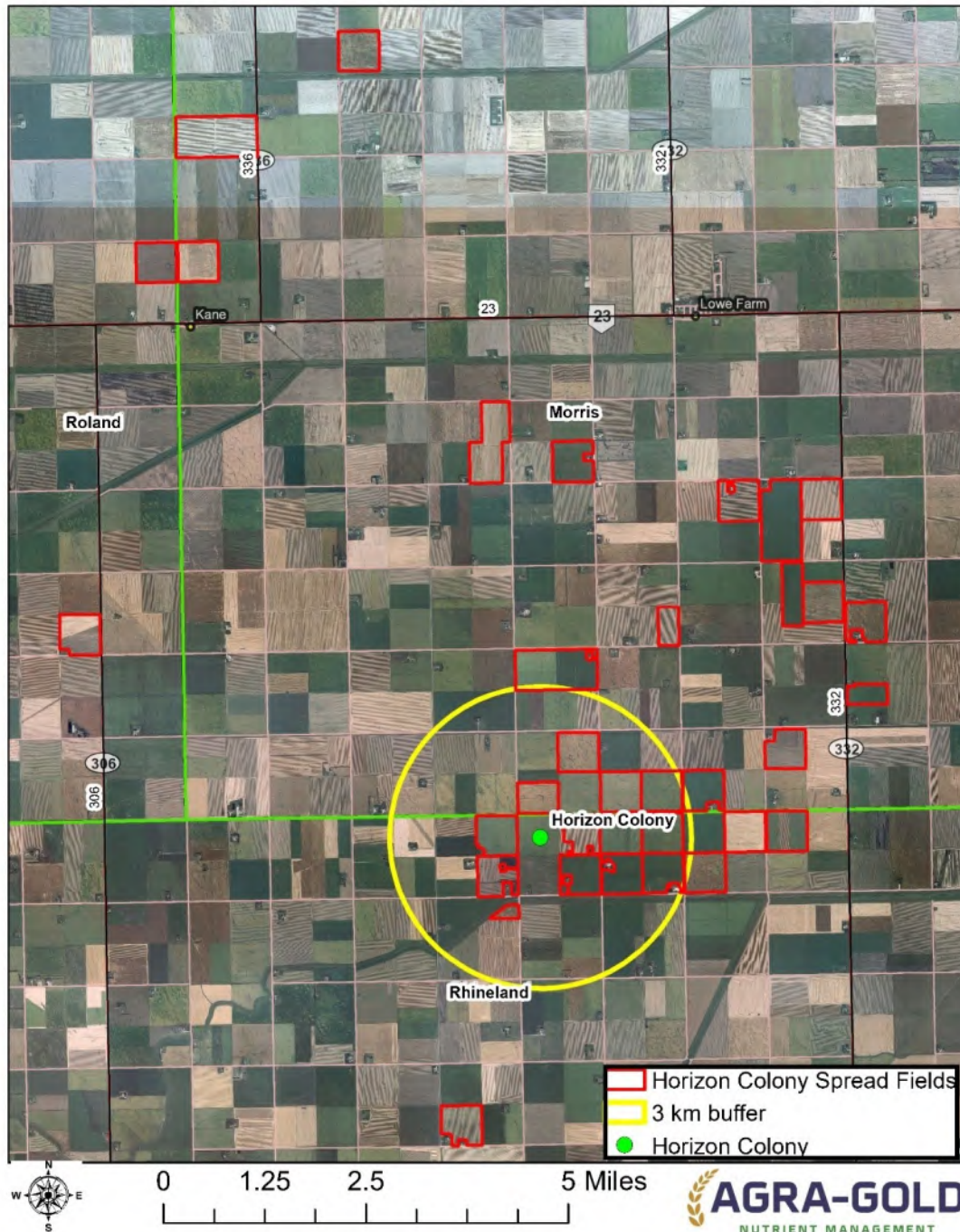


Horizon Colony MB Drains / Soils - NW June 18, 2024



Appendix H: Horizon Colony Farms: 3 km Buffer

Horizon Colony 3 Km Buffer - Overview June 18, 2024



Horizon Colony 3 Km Buffer - June 18, 2024

