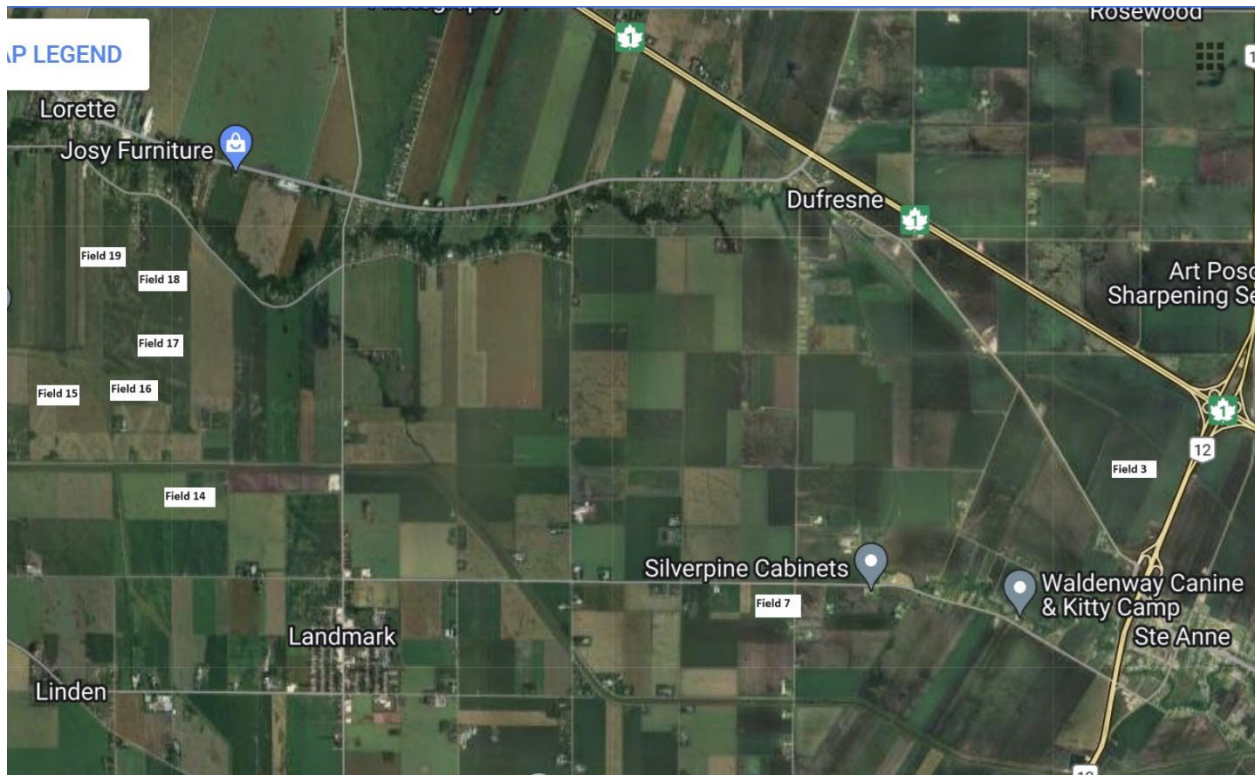


Field Locations



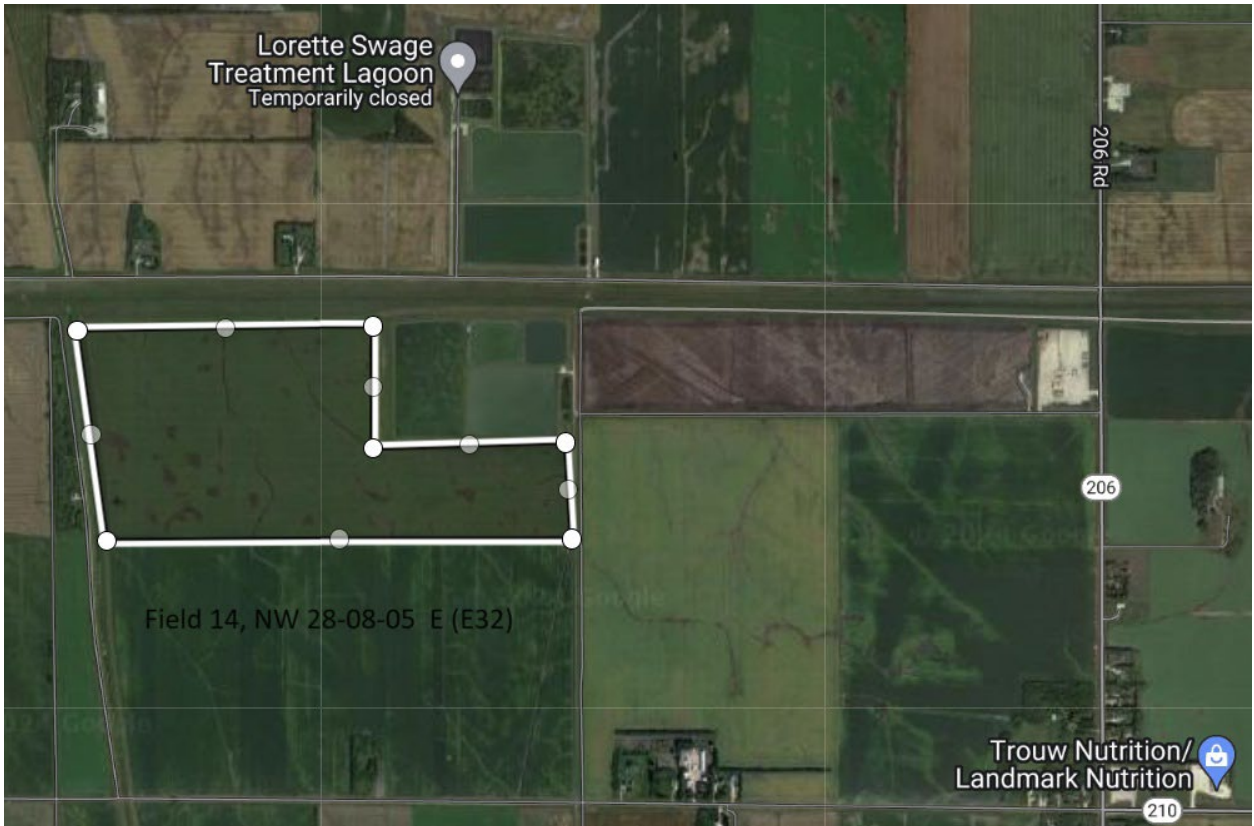
Field 3, RL 44-48 Parish of Ste. Anne



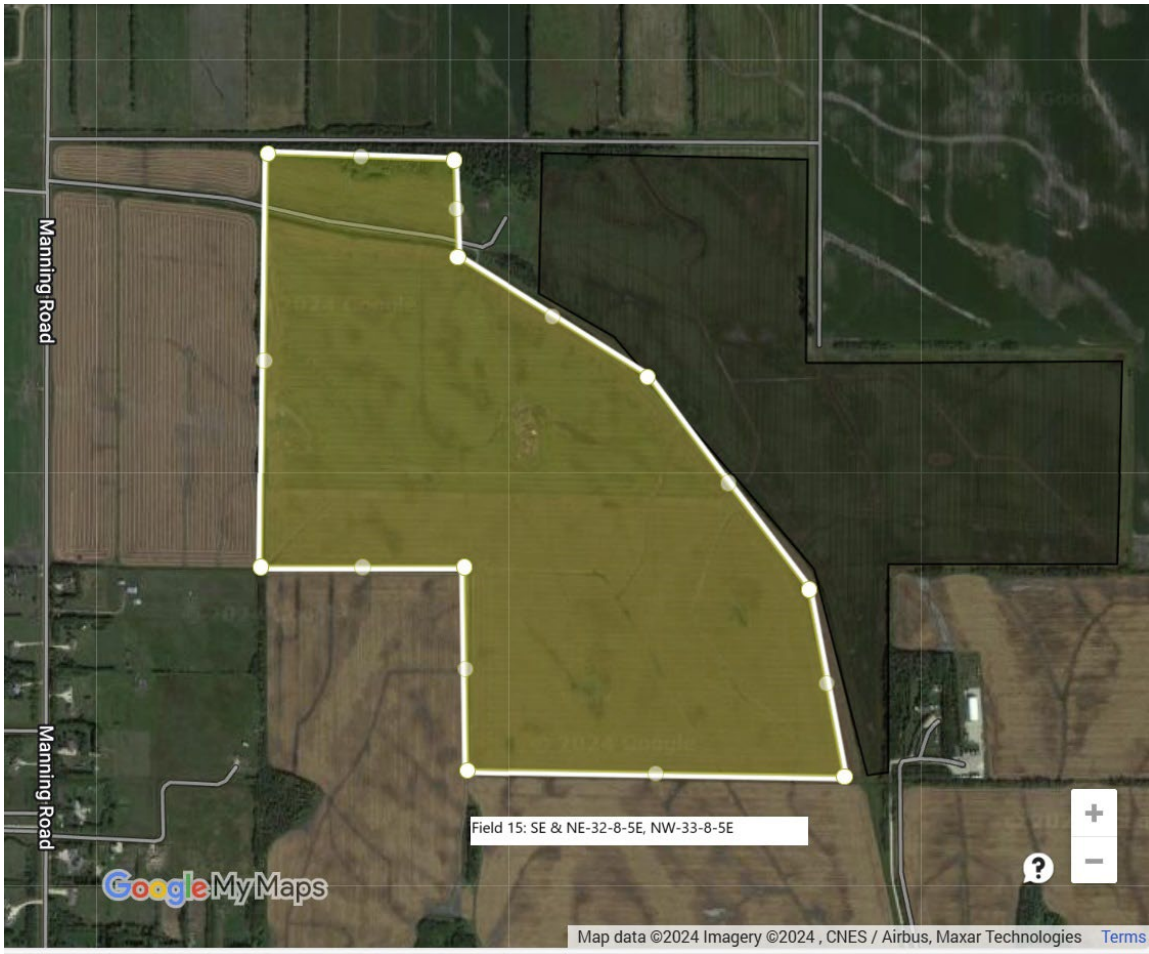
Field 7, NW NE 20-08-06 E



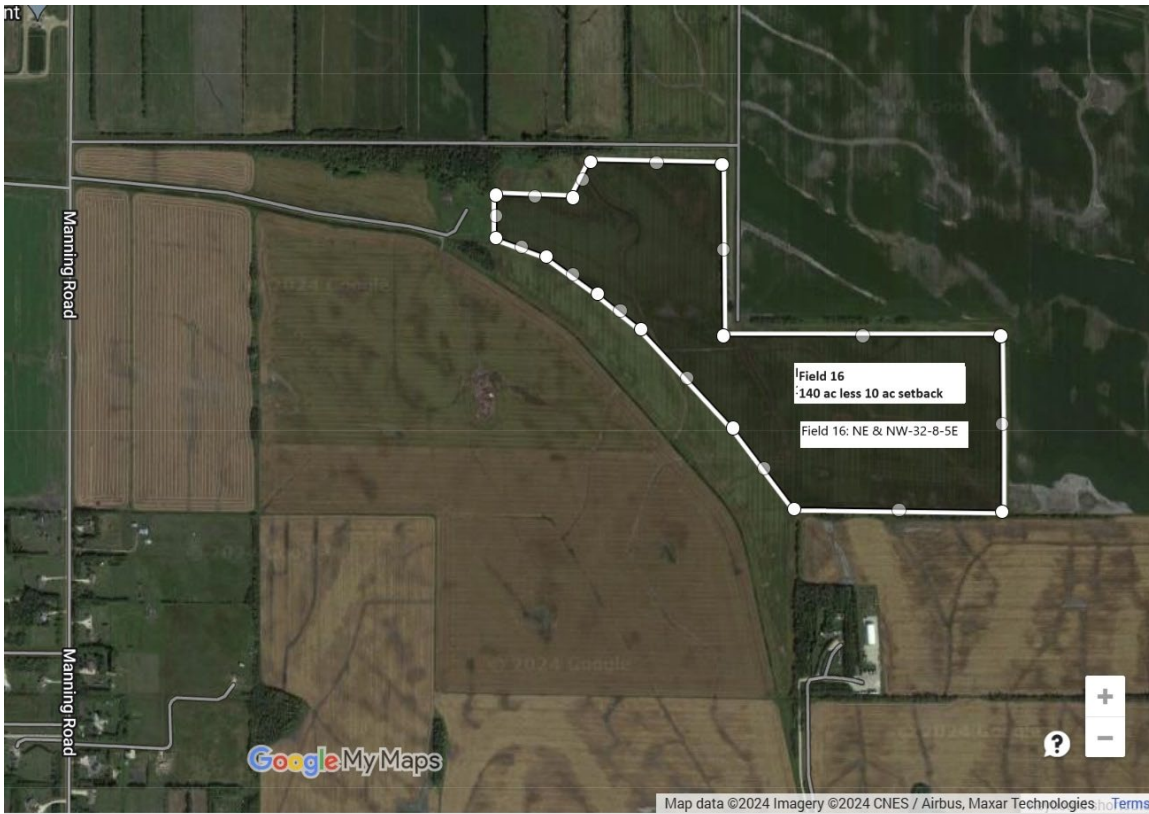
Field 14, NW 28-08-05 E (E32)



Field 15 SE NE-32-8-5E, NW-33-8-5E



Field 16 NE NW-32-8-5E





Field 17
130 ac less 10 ac
setback for South
drain

Field 17, R 1 011 004 E (E32), RL 9, 10 (Top)

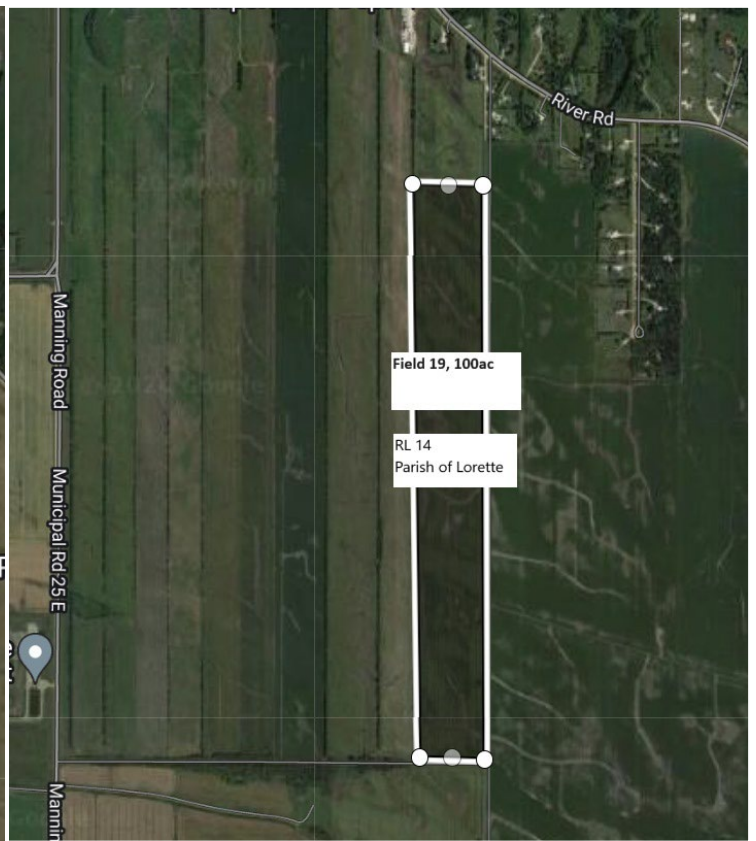
Field 18 RL 9, 10, 11 Parish of Lorette
(Bottom Left)

Field 19 RL 14 Parish of Lorette (Bottom Right)



Field 18
210 ac less 10 ac
setback for south
drain

Field 18: RL 9, 10, 11
Parish of Lorette



Field 19, 100ac

RL 14
Parish of Lorette