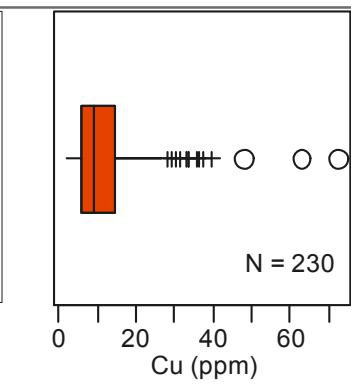
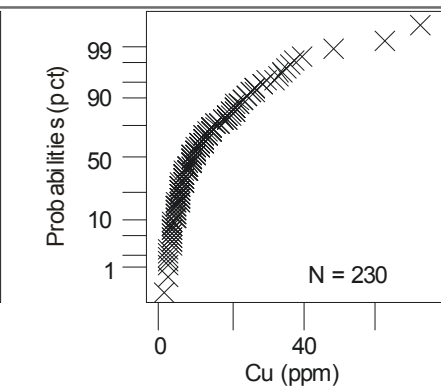
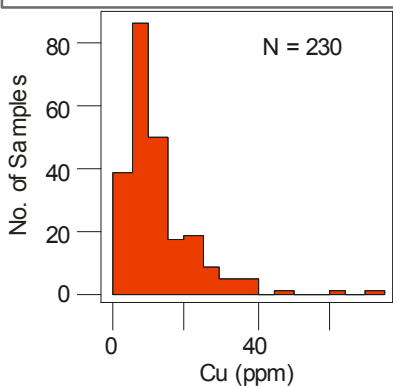
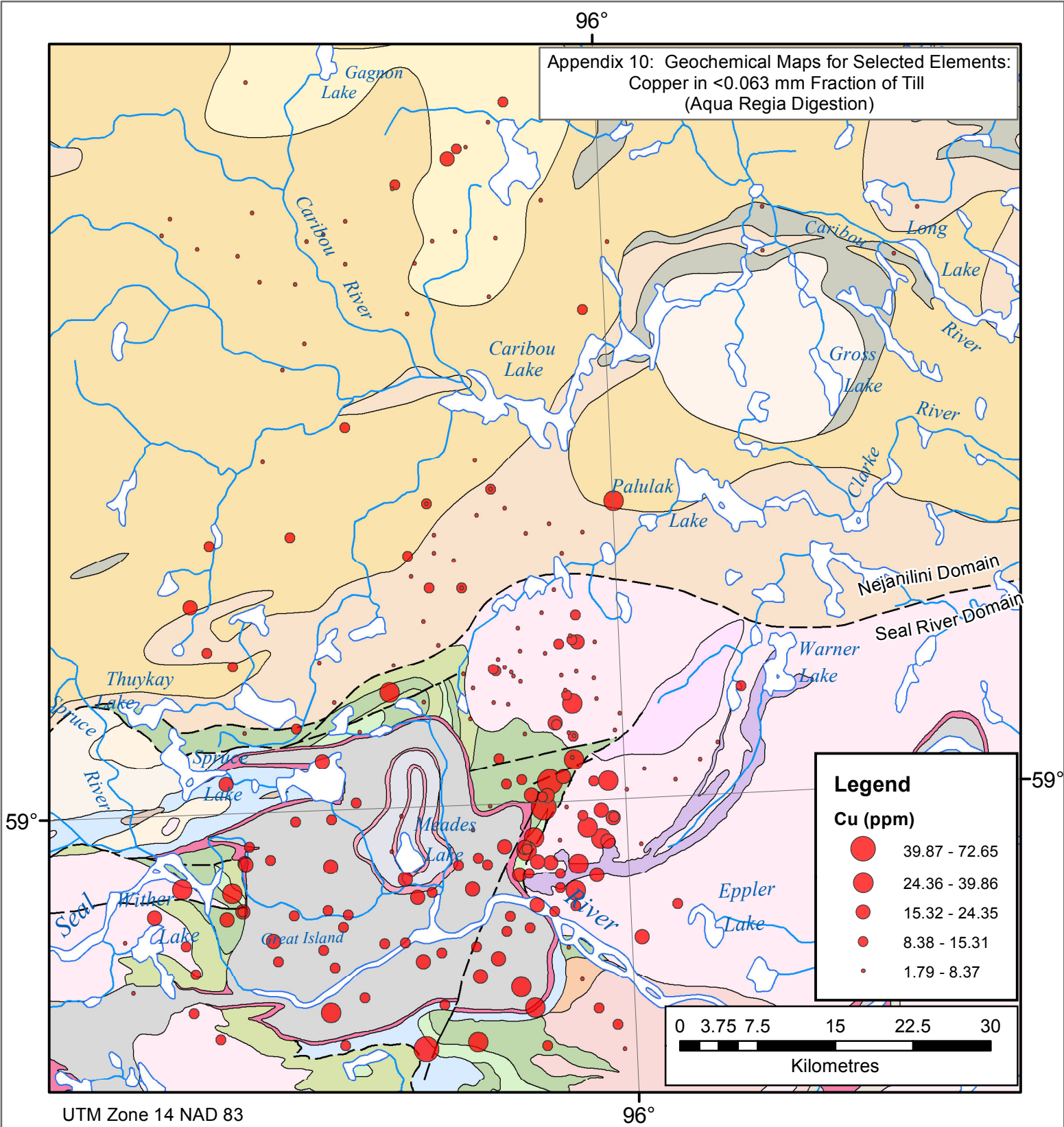


Appendix 10: Geochemical Maps for Selected Elements:  
Copper in <0.063 mm Fraction of Till  
(Aqua Regia Digestion)



| Summary Statistics     |       |
|------------------------|-------|
| Maximum                | 72.65 |
| 98th Percentile        | 36.78 |
| 95th Percentile        | 29.7  |
| 90th Percentile        | 23.35 |
| 3rd Quartile           | 14.67 |
| Median                 | 9.18  |
| 1st Quartile           | 5.885 |
| 10th Percentile        | 4.232 |
| 5th Percentile         | 3.431 |
| 2nd Percentile         | 2.71  |
| Minimum                | 1.79  |
| Median Abs. Deviation  | 5.66  |
| IQR Est. of Std. Dev.  | 6.51  |
| Mean                   | 12.2  |
| Standard Deviation     | 9.65  |
| Coeff. of Variation, % | 79.1  |