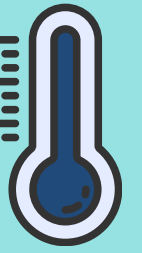


CARING FOR YOUR NALOXONE KIT

Naloxone works best when it's stored properly. Here's how to keep your kit in good condition so it's ready when you need it.

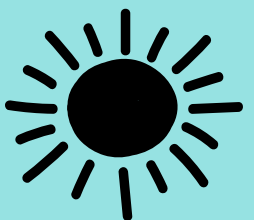
STORE AT A SAFE TEMPERATURE

- Keep your naloxone kit at **room temperature (15–30°C)**.
- Naloxone can tolerate short periods of colder or warmer temperatures, but it **breaks down in high heat (above 40°C)**.
- If the ampoule **freezes**, it may develop tiny cracks, which can let in bacteria or cause the medication to degrade.



AVOID EXTREME TEMPERATURES

- **Do not leave naloxone in a car** for long periods, especially during very hot or very cold weather.
- In winter, **carry your kit close to your body**—for example, in a pocket or under your coat.
- Avoid storing it on the outside of a backpack or anywhere it may be exposed to freezing temperatures for hours at a time.



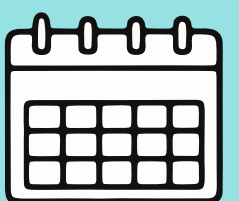
WHEN TO REPLACE YOUR KIT

- If your kit is **expired** or has been exposed to **extreme heat (around +40°C)** or **extreme cold (around -20°C or colder)** for more than **24 hours**, it should be replaced.
- When in doubt, replacing the kit is the safest choice. Check the [Naloxone Finder](#) for the nearest distribution site.



UNDERSTANDING THE EXPIRY DATE

- The expiry date **on the kit shows a month and year**. The medication expires on the **last day of that month**.
- Example: Expiry July 2026 means it expires on July 31, 2026.
- Research shows naloxone can remain stable for years past its expiry date if stored properly, but it's always **best to use medication that is not expired**.



IN AN EMERGENCY: USE WHAT YOU HAVE

- If the only naloxone available is **expired** or has been stored outside the **recommended temperature range**, use it anyway.
- It may be less effective, but it can still help. During an opioid overdose or poisoning, the most important thing is to **call 911 and give naloxone as soon as possible**.
- See [How to Respond To Opioid Toxicity](#)



Responding to an emergency is very difficult. You may need support as well. Talk to someone about what happened and consider mental health or crisis supports.

See mb.211.ca



For more information on the Manitoba Take Home Naloxone Program visit:
manitoba.ca/naloxone

Find a distribution site

Manitoba 