

Hydrologic Forecast Centre - Manitoba Transportation and Infrastructure

Red River Tributary Flows		
Last Reading Date	Hydrometric Stations	Flow (cfs)
27-Jun-24	Pembina River near Windygates	357
27-Jun-24	Roseau River at Gardenton	1,253
27-Jun-24	Roseau River near Dominion City	1,309
27-Jun-24	Rat River near Sundown	55
27-Jun-24	Rat River near Otterburne	174
27-Jun-24	Main Drain near Dominion City	4
27-Jun-24	Joubert Creek at St. Pierre-Jolys	26
27-Jun-24	Morris River near Rosenort	120
27-Jun-24	Little Morris River near Rosenort	36
27-Jun-24	Boyne River near Carman	95
27-Jun-24	La Salle River near Sanford	51
27-Jun-24	Netley Creek near Petersfield	96

Note: Please go to the next pages to view the historical and current flow hydrographs for these rivers

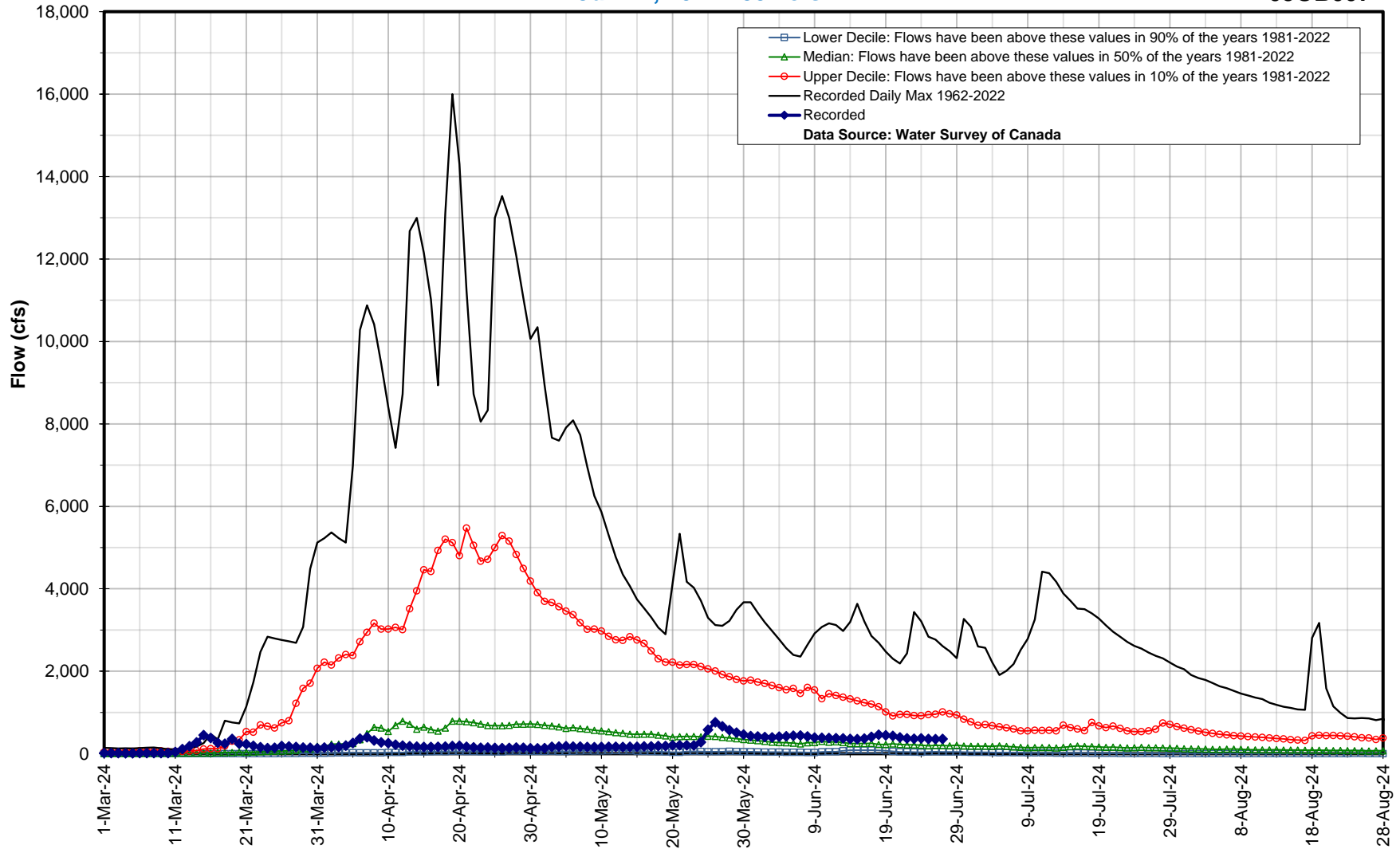
* Real-time flow and level data is provisional and subject to change. Data provided by Water Survey of Canada/Environment Canada

Hydrologic Forecast Centre - Manitoba Transportation and Infrastructure

Pembina River near Windygates

Jun 27, 2024 : 357 cfs

050B007

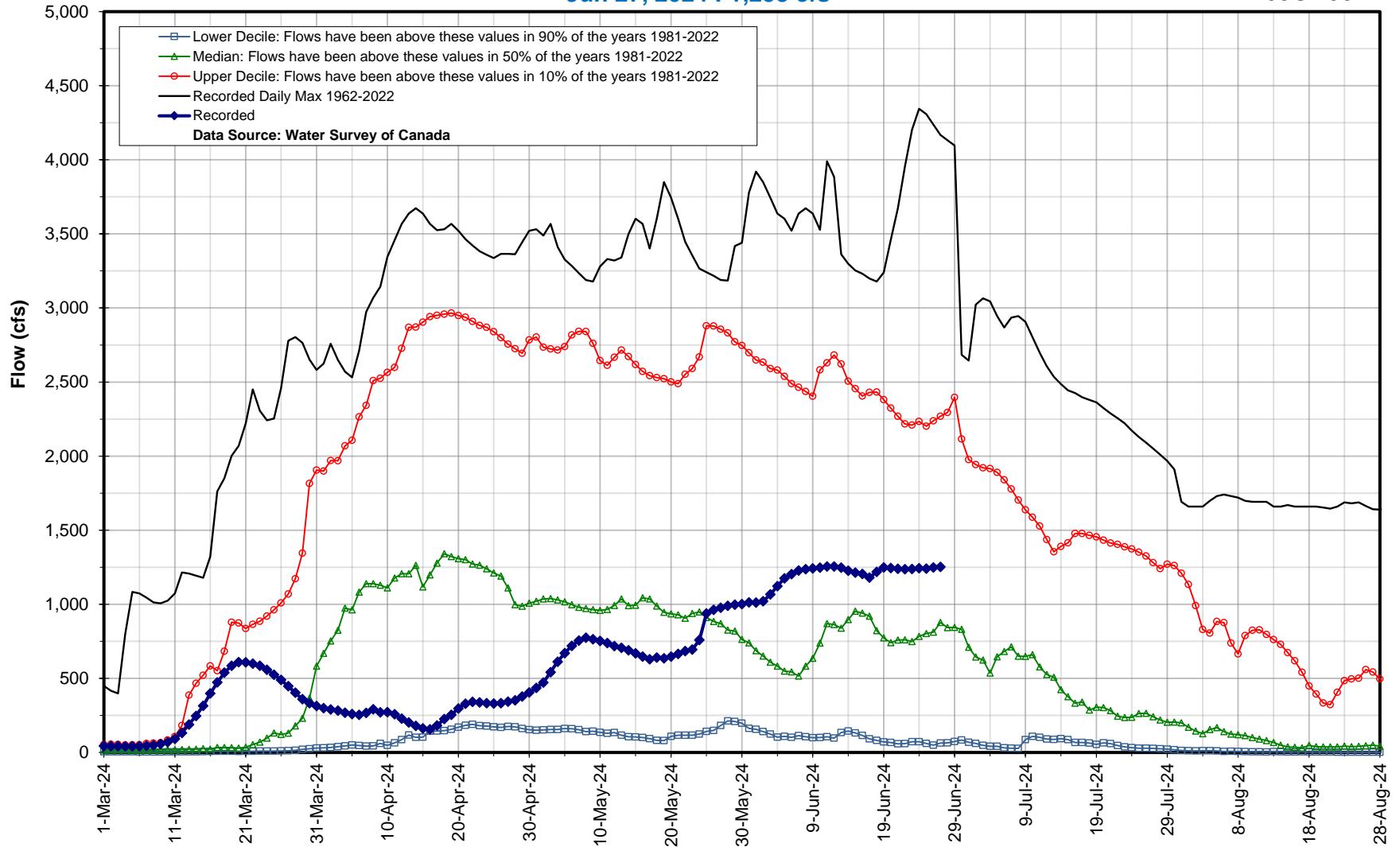


Hydrologic Forecast Centre - Manitoba Transportation and Infrastructure

Roseau River at Gardenton

Jun 27, 2024 : 1,253 cfs

05OD004

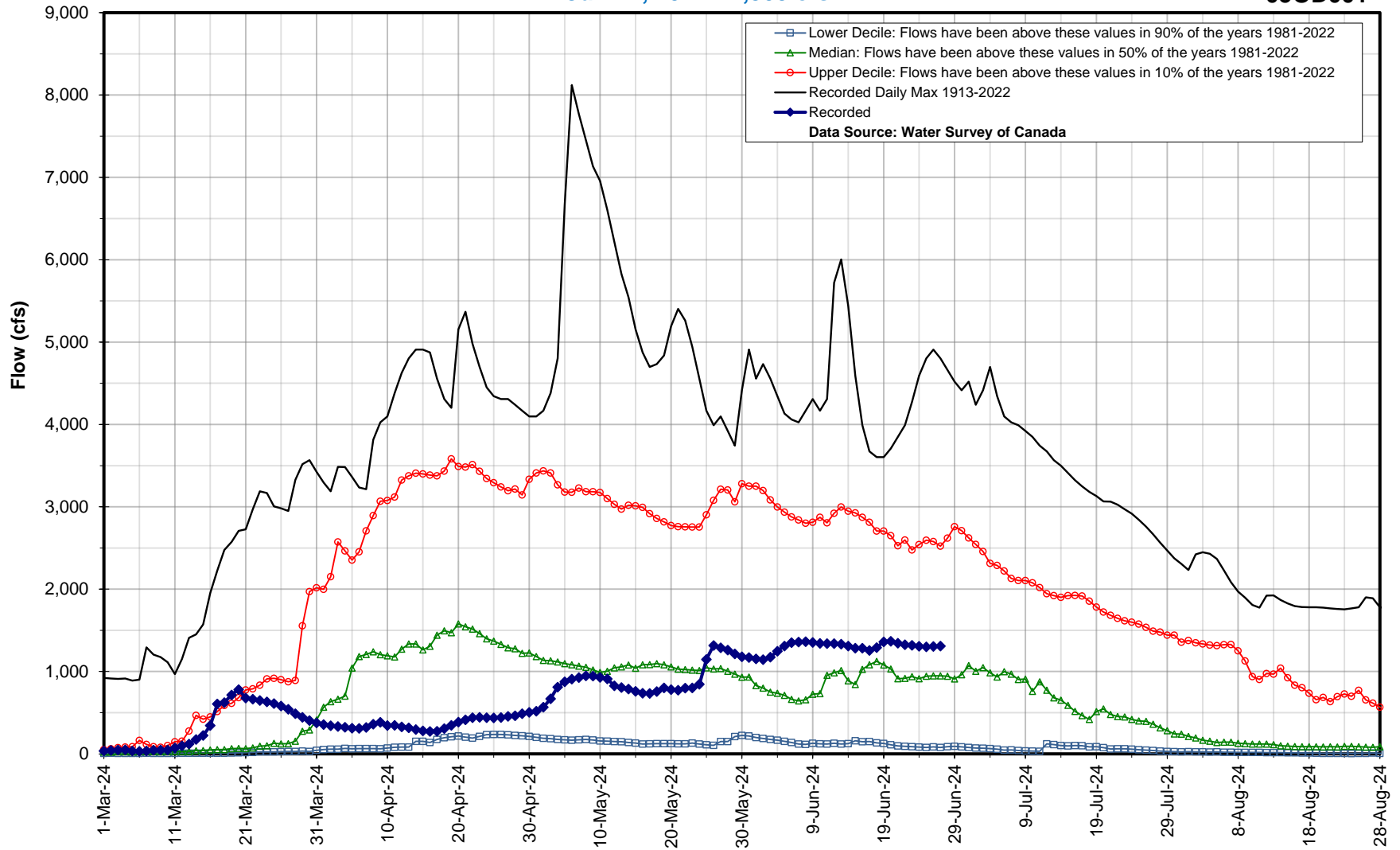


Hydrologic Forecast Centre - Manitoba Transportation and Infrastructure

Roseau River near Dominion City

Jun 27, 2024 : 1,309 cfs

05OD001



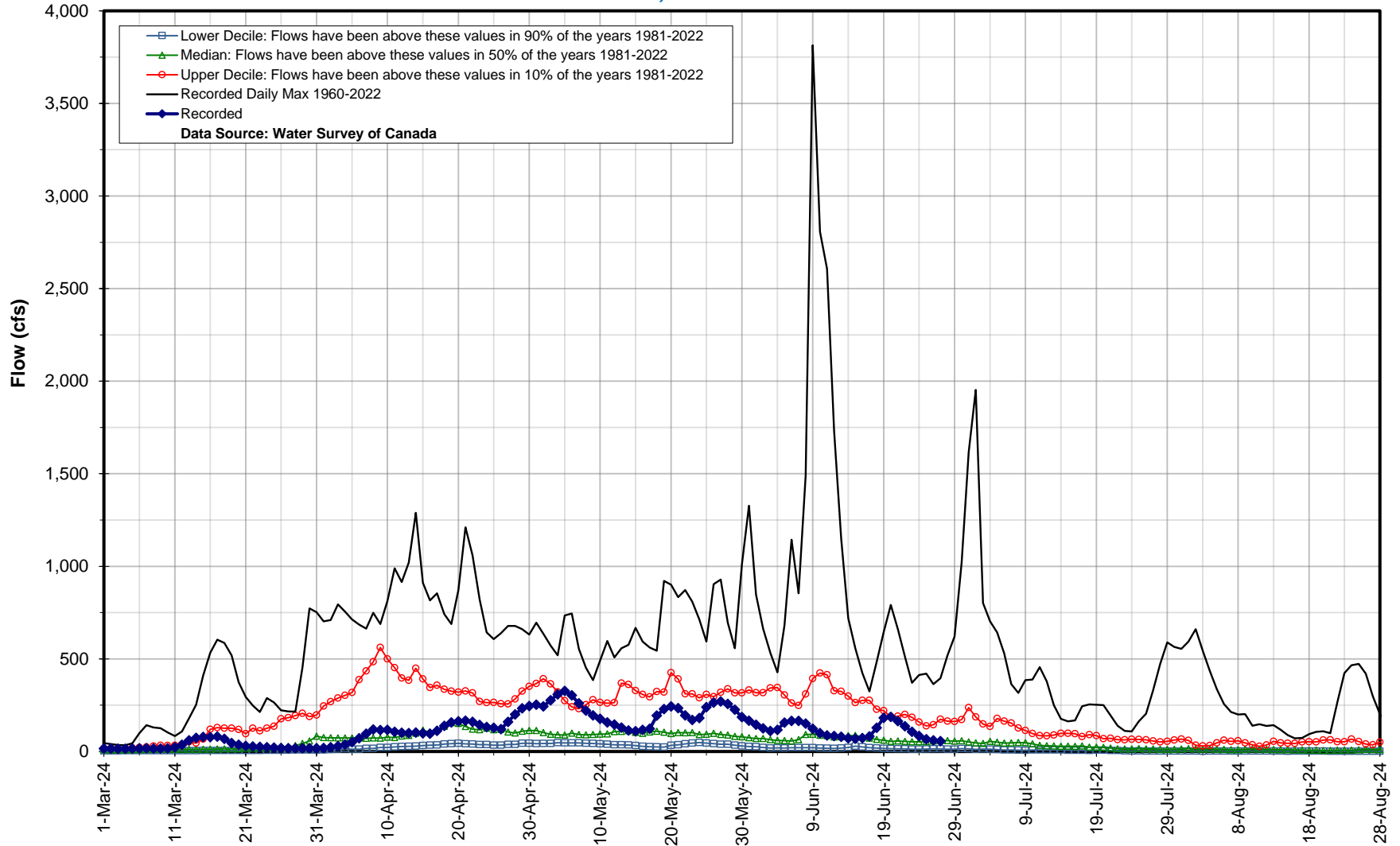
Lower Decile: Flows have been above these values in 90% of the years 1981-2022
Median: Flows have been above these values in 50% of the years 1981-2022
Upper Decile: Flows have been above these values in 10% of the years 1981-2022
Recorded Daily Max 1913-2022
Recorded
Data Source: Water Survey of Canada

Hydrologic Forecast Centre - Manitoba Transportation and Infrastructure

Rat River near Sundown

Jun 27, 2024 : 55 cfs

050E004

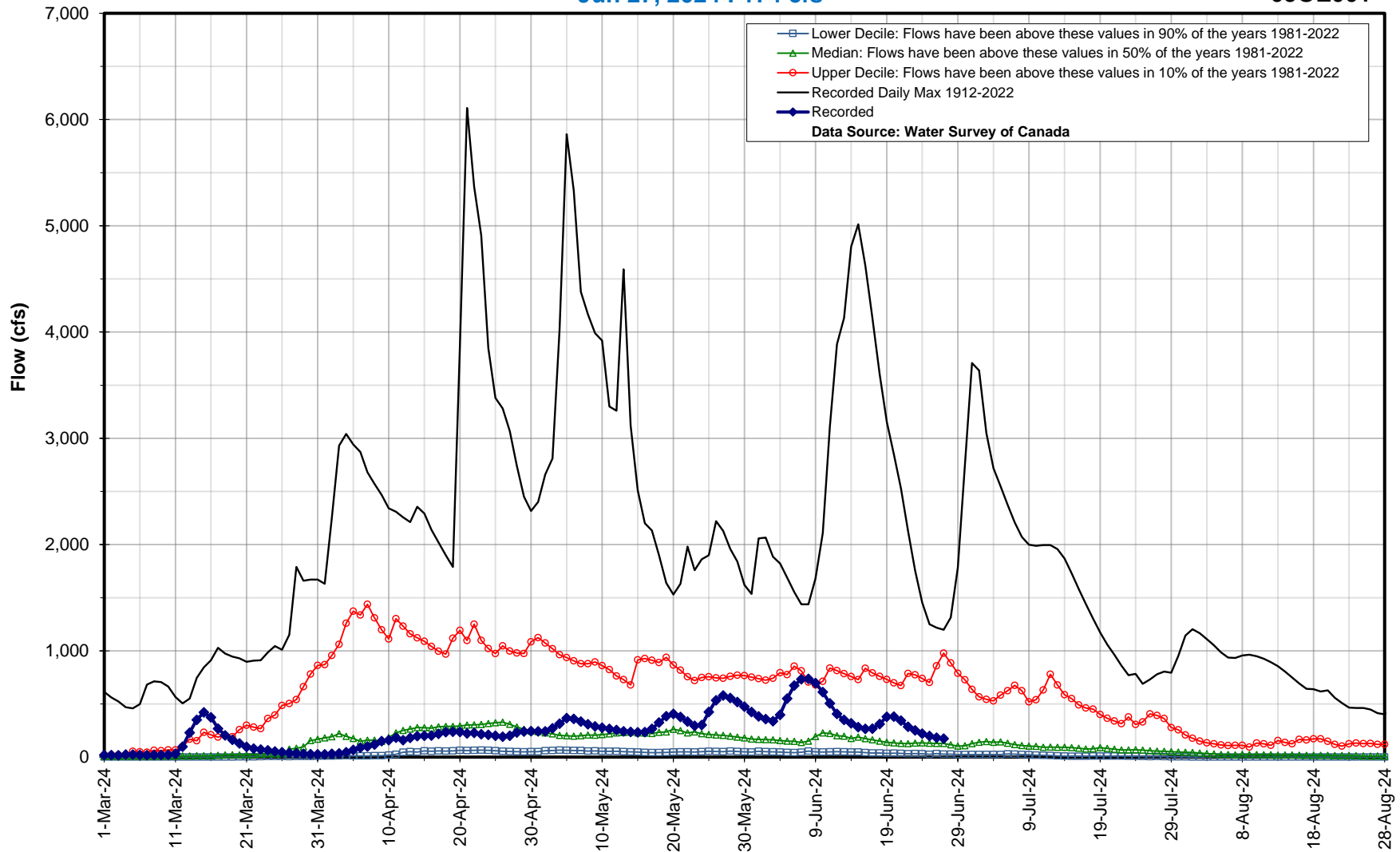


Hydrologic Forecast Centre - Manitoba Transportation and Infrastructure

Rat River near Otterburne

Jun 27, 2024 : 174 cfs

050E001



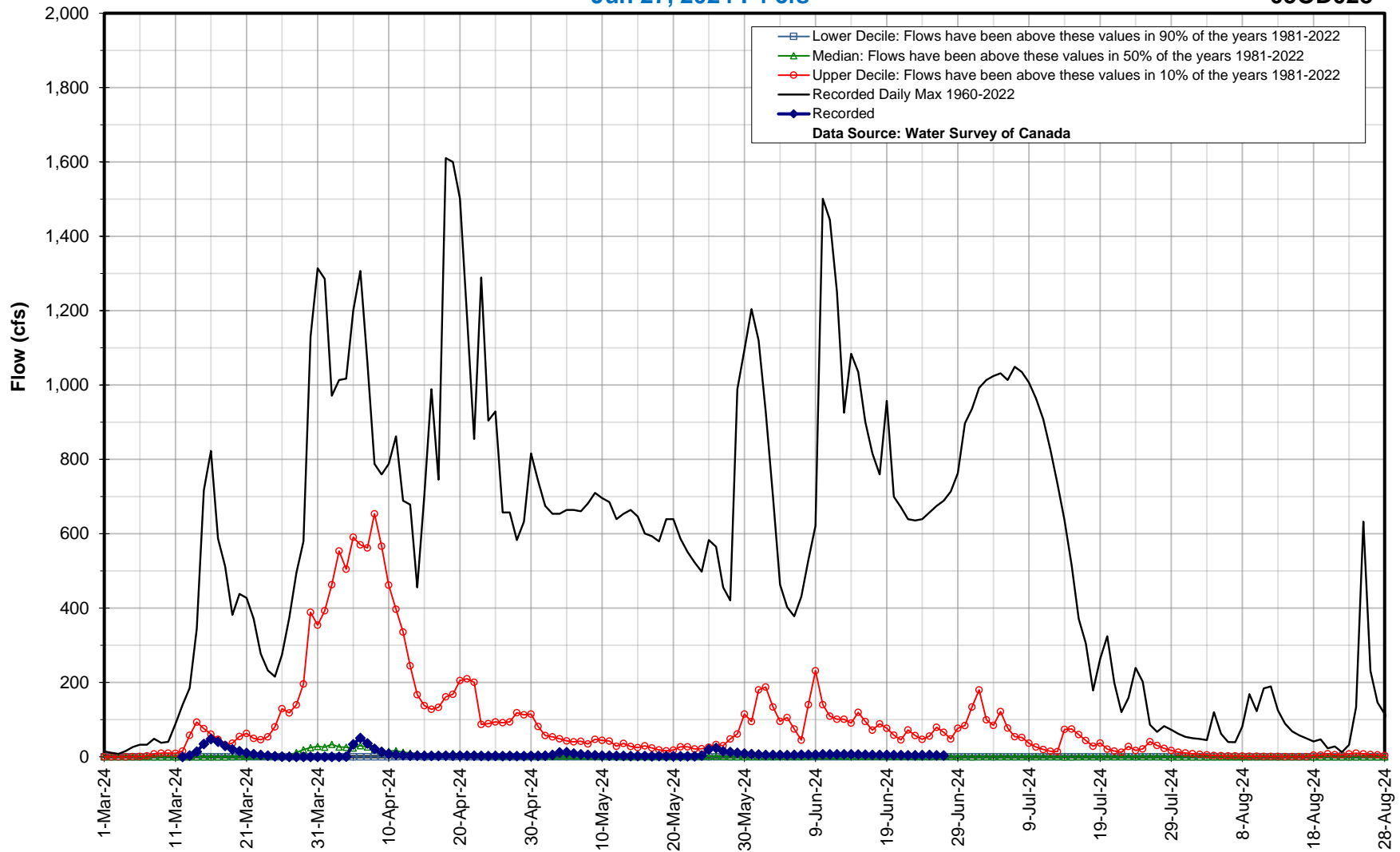
Legend:
Lower Decile: Flows have been above these values in 90% of the years 1981-2022
Median: Flows have been above these values in 50% of the years 1981-2022
Upper Decile: Flows have been above these values in 10% of the years 1981-2022
Recorded Daily Max 1912-2022
Recorded
Data Source: Water Survey of Canada

Hydrologic Forecast Centre - Manitoba Transportation and Infrastructure

Main Drain near Dominion City

Jun 27, 2024 : 4 cfs

05OD028

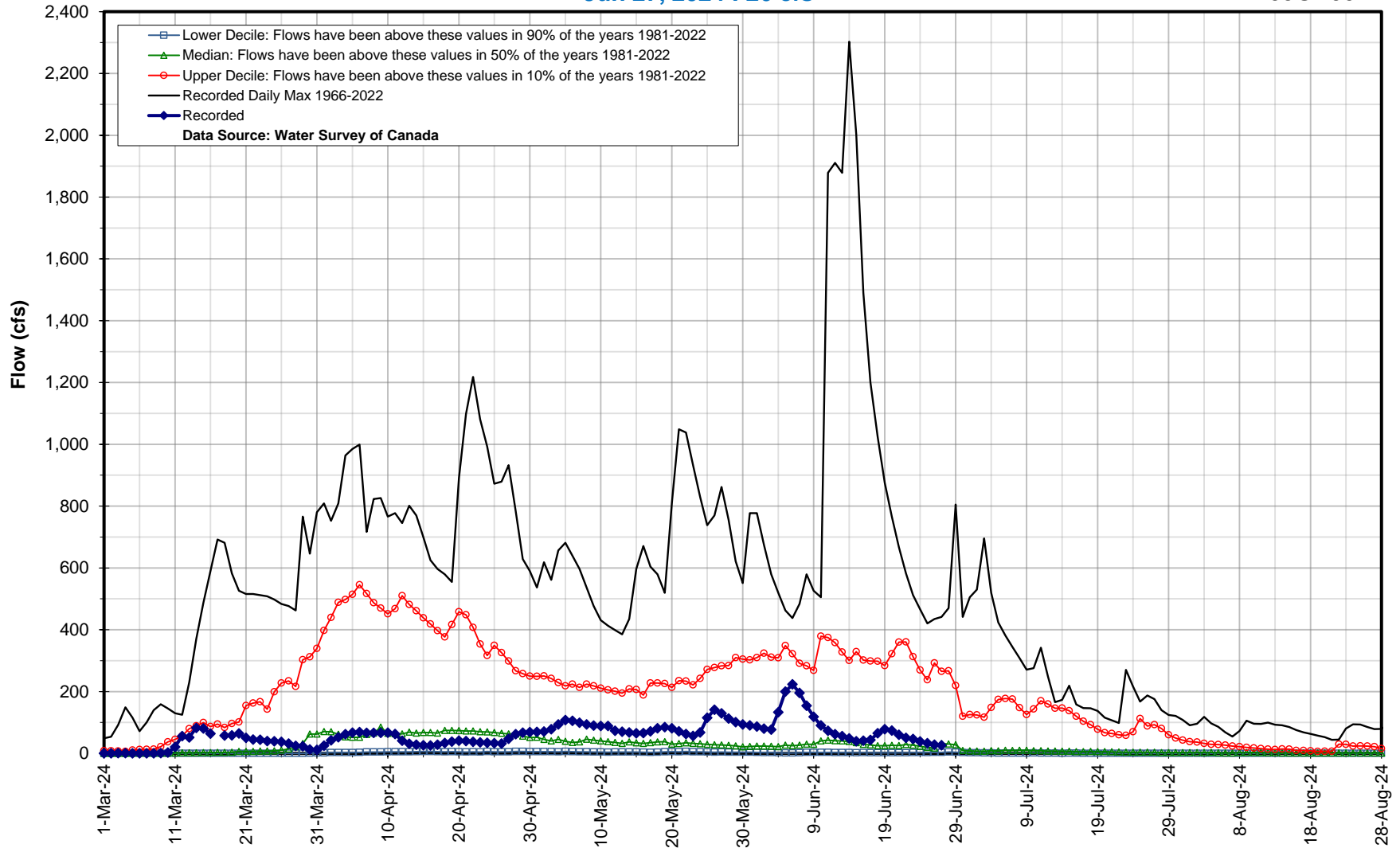


Hydrologic Forecast Centre - Manitoba Transportation and Infrastructure

Joubert Creek at St. Pierre-Jolys

Jun 27, 2024 : 26 cfs

05OE007

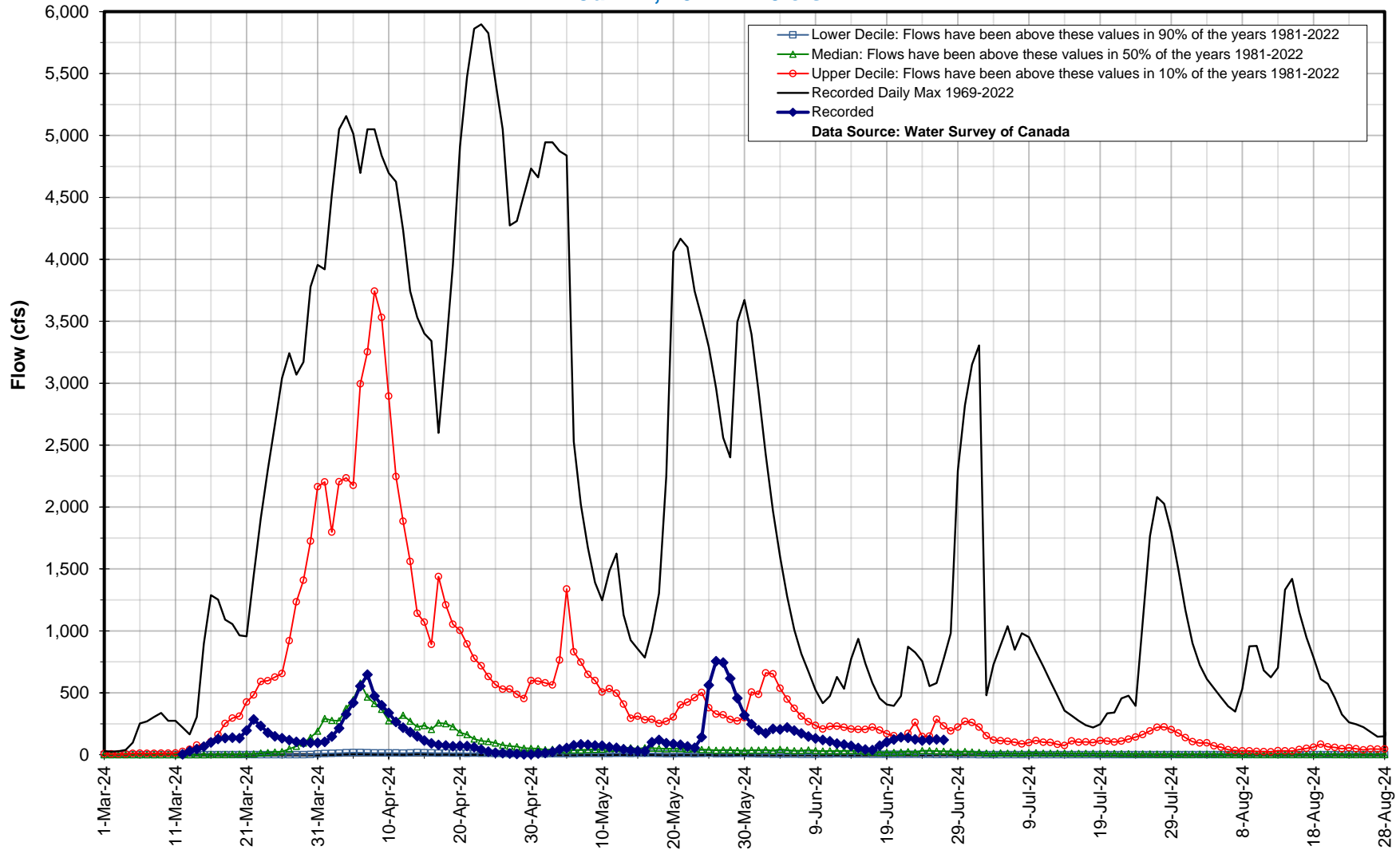


Hydrologic Forecast Centre - Manitoba Transportation and Infrastructure

Morris River near Rosenort

Jun 27, 2024 : 120 cfs

05OF020

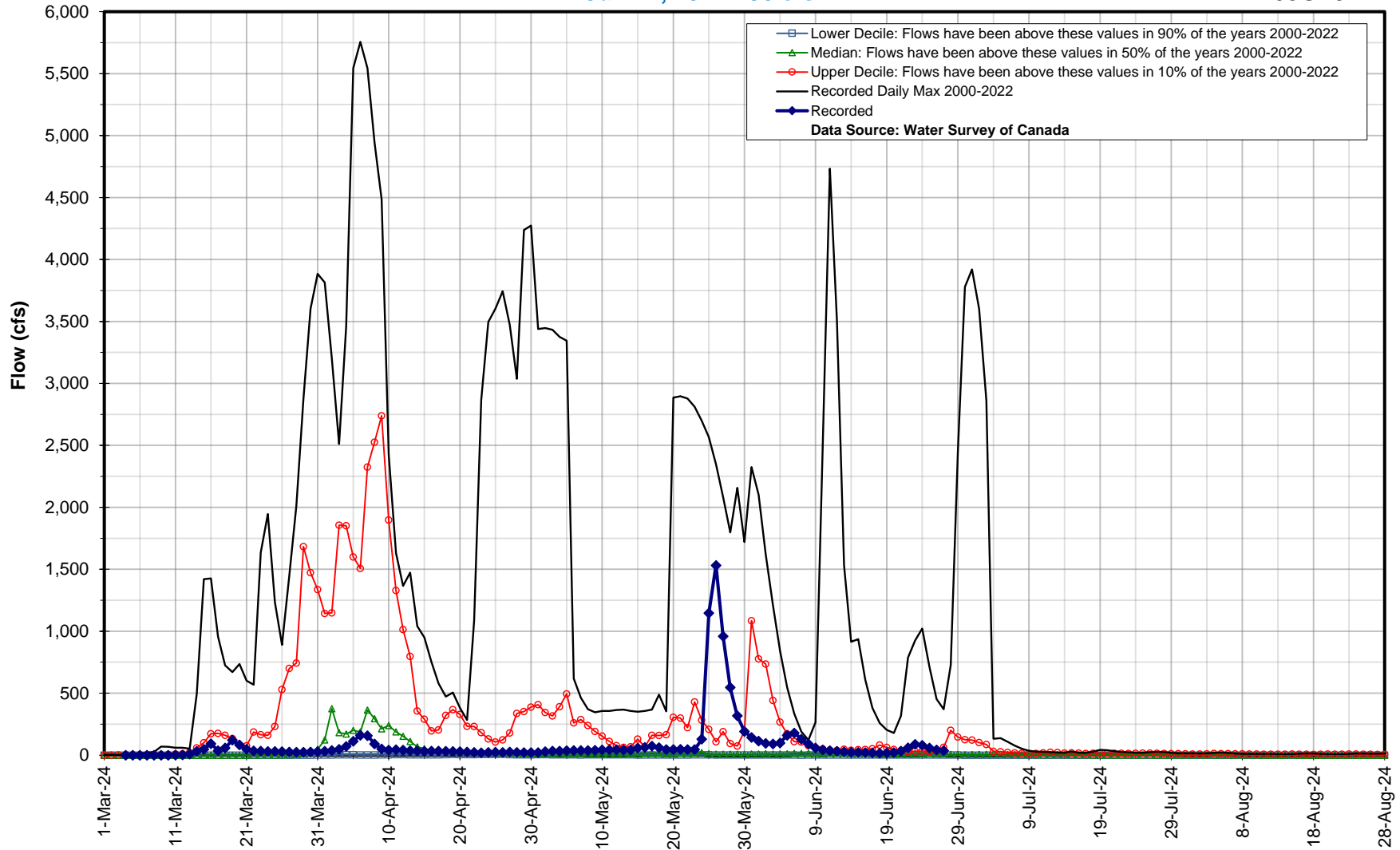


Hydrologic Forecast Centre - Manitoba Transportation and Infrastructure

Little Morris River near Rosenort

Jun 27, 2024 : 36 cfs

05OF024

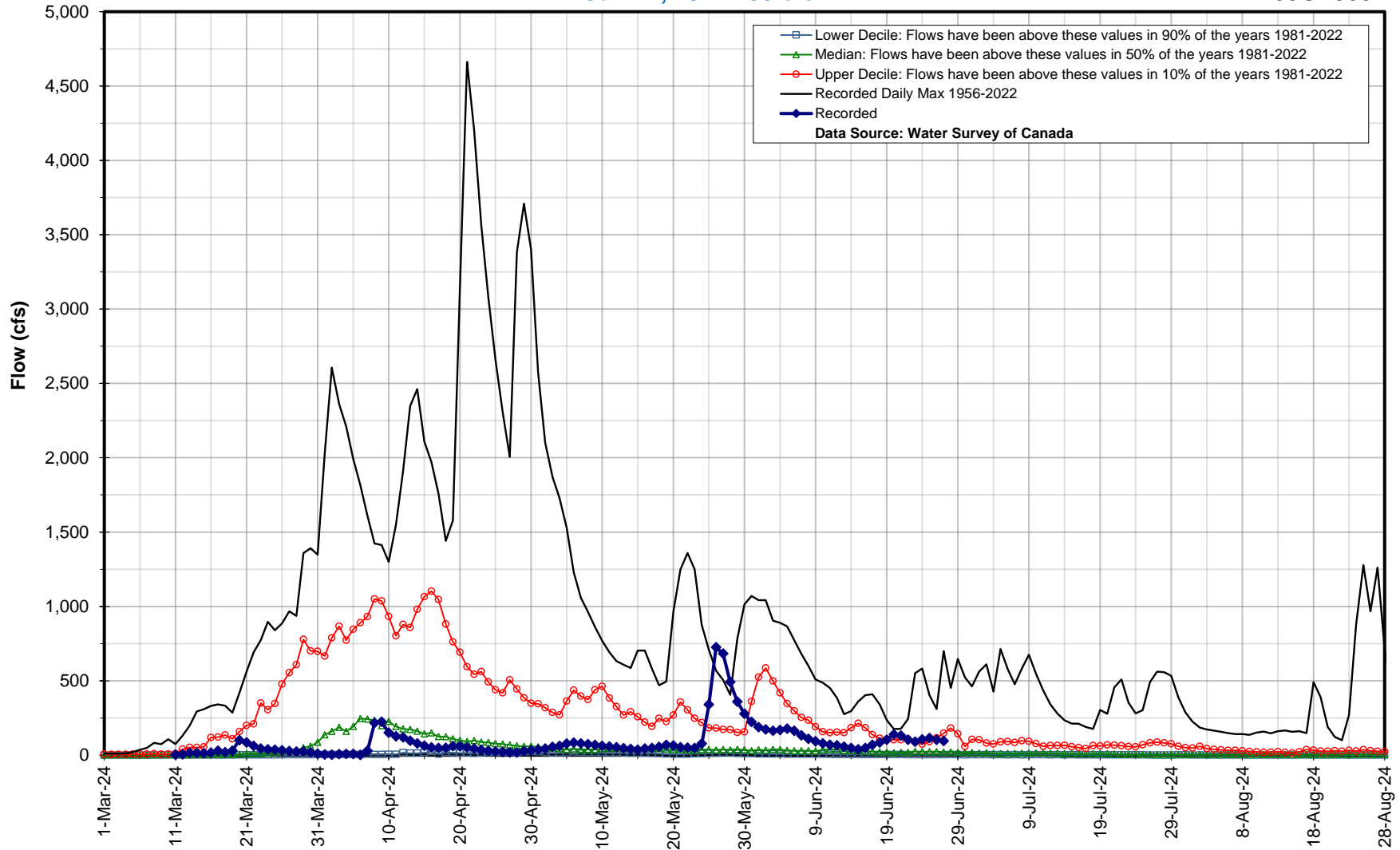


Hydrologic Forecast Centre - Manitoba Transportation and Infrastructure

Boyne River near Carman

Jun 27, 2024 : 95 cfs

05OF003

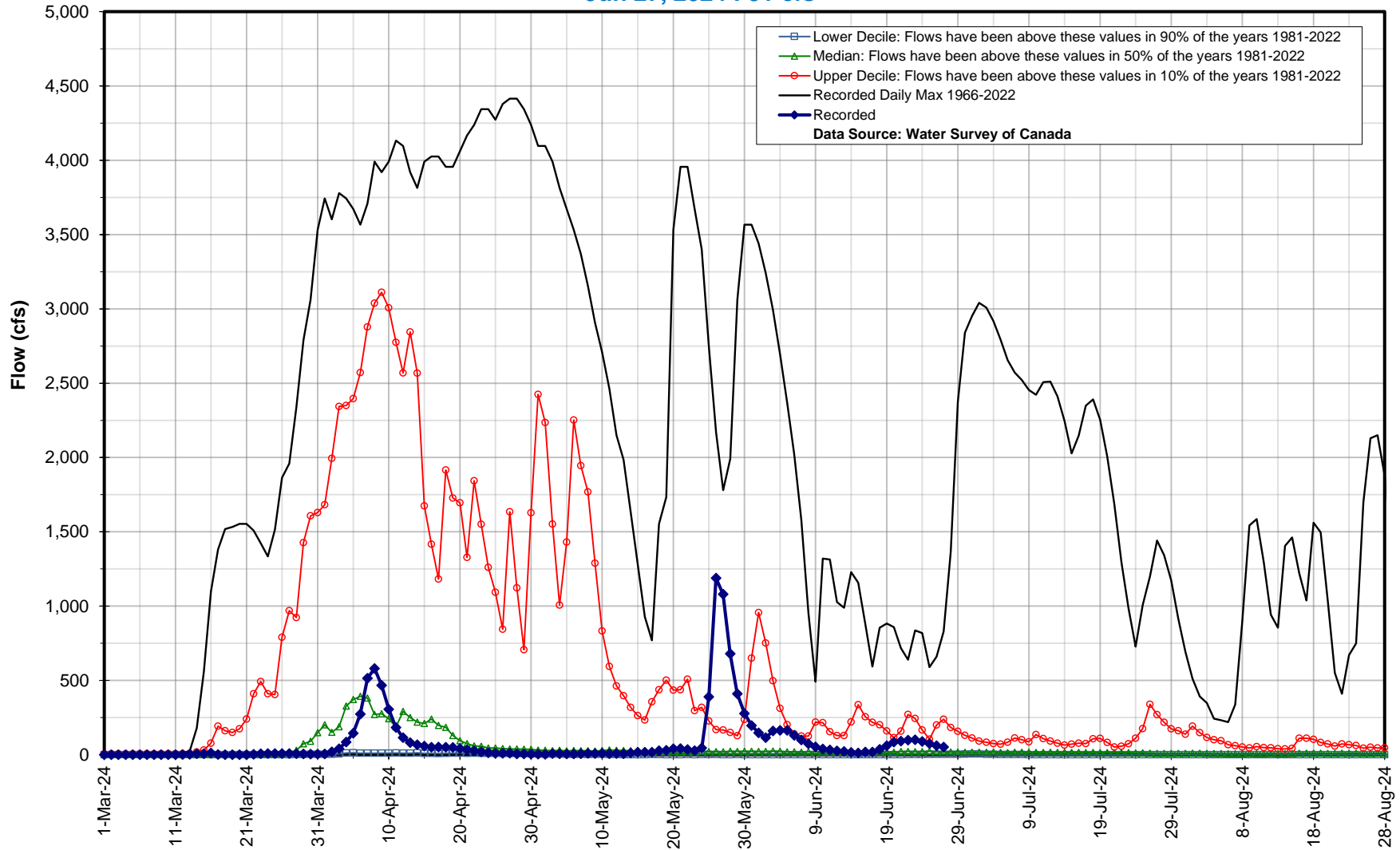


Hydrologic Forecast Centre - Manitoba Transportation and Infrastructure

La Salle River near Sanford

Jun 27, 2024 : 51 cfs

05OG001



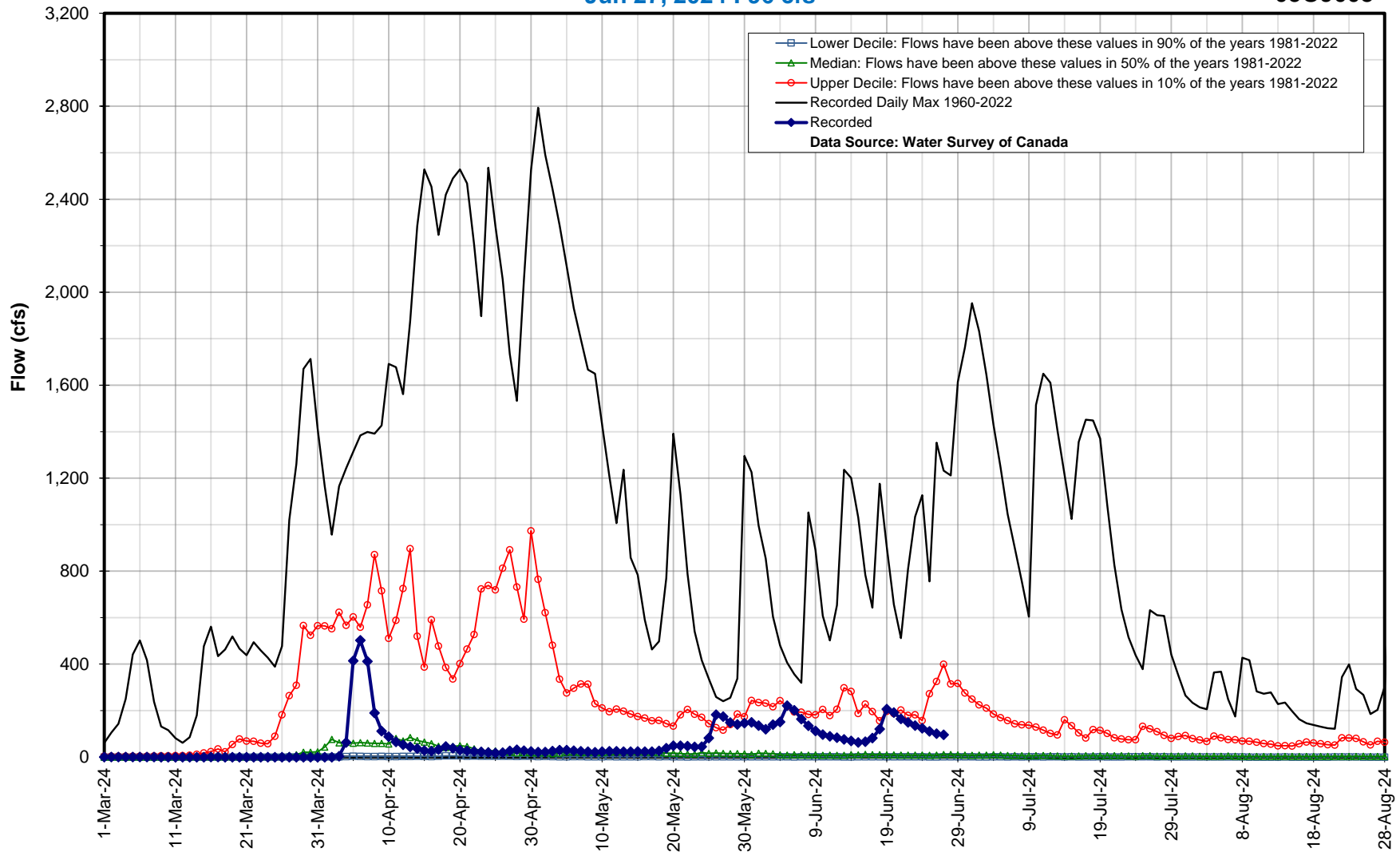
— Lower Decile: Flows have been above these values in 90% of the years 1981-2022
— Median: Flows have been above these values in 50% of the years 1981-2022
— Upper Decile: Flows have been above these values in 10% of the years 1981-2022
— Recorded Daily Max 1966-2022
— Recorded
Data Source: Water Survey of Canada

Hydrologic Forecast Centre - Manitoba Transportation and Infrastructure

Netley Creek near Petersfield

Jun 27, 2024 : 96 cfs

050J008



Legend:
- Lower Decile: Flows have been above these values in 90% of the years 1981-2022
- Median: Flows have been above these values in 50% of the years 1981-2022
- Upper Decile: Flows have been above these values in 10% of the years 1981-2022
- Recorded Daily Max 1960-2022
- Recorded
Data Source: Water Survey of Canada