

Hydrologic Forecast Centre - Manitoba Transportation and Infrastructure

Assiniboine River Flows and Levels			
Last Reading Date	Hydrometric Stations	Flow (cfs)	Level (feet)
27-Jun-24	Assiniboine River near Sturgis	177	
27-Jun-24	Assiniboine River at Kamsack	545	
27-Jun-24	Assiniboine River near Russell	1,415	
27-Jun-24	Assiniboine River Southwest of St. Lazare		1,276.65
27-Jun-24	Assiniboine River near Miniota	2,059	
27-Jun-24	Assiniboine River East of Virden		1,207.60
27-Jun-24	Assiniboine River North of Griswold		1,188.75
27-Jun-24	Assiniboine River at Brandon	2,498	
27-Jun-24	Assiniboine River near Holland	3,257	
27-Jun-24	Assiniboine River near Portage la Prairie	3,959	
27-Jun-24	Assiniboine River at Baie St. Paul		788.95
27-Jun-24	Assiniboine River at Headingley	4,371	

Note: Please go to the next pages to view the historical and current flow hydrographs and water levels for these rivers

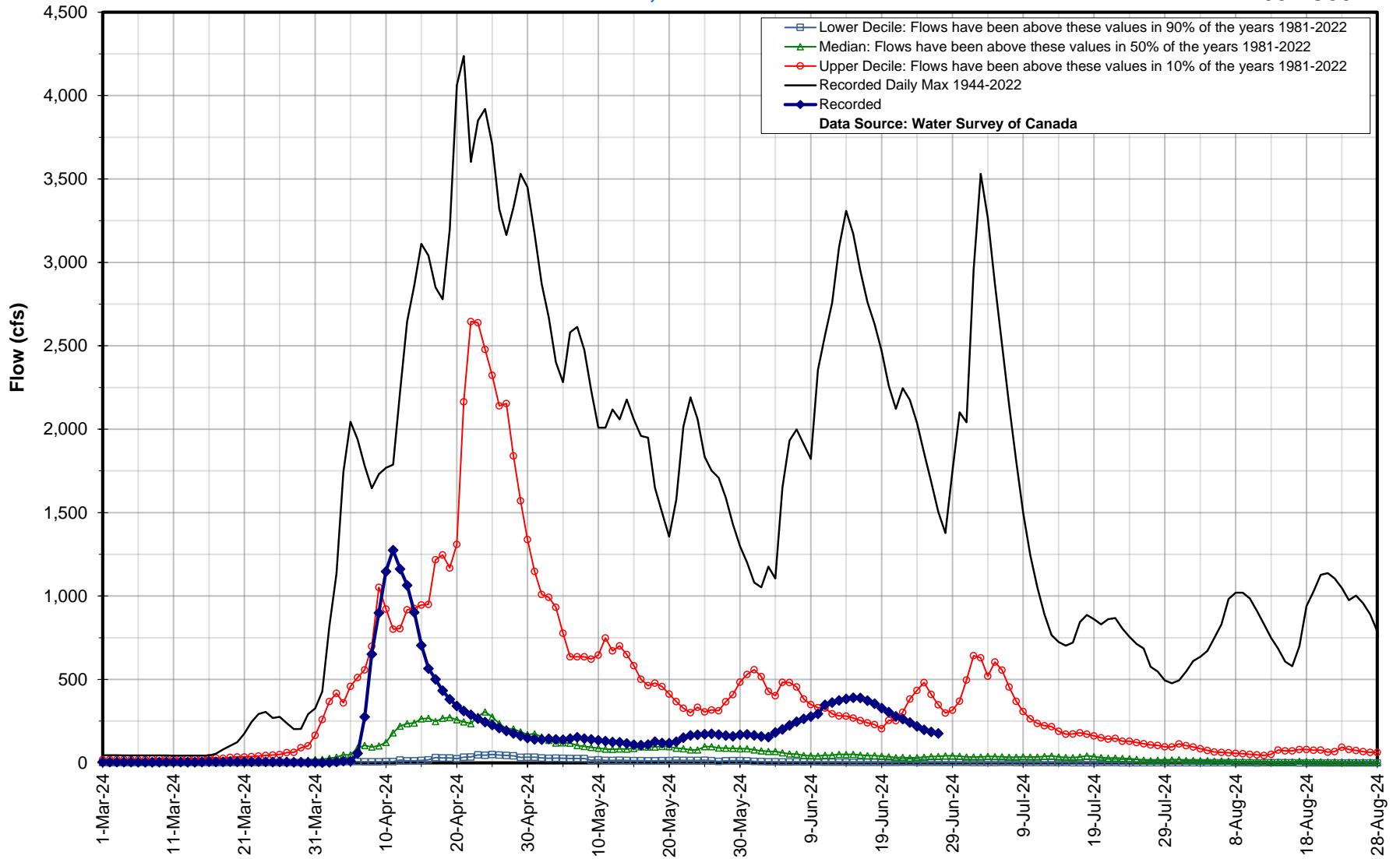
* Real-time flow and level data is provisional and subject to change. Data provided by Water Survey of Canada/Environment Canada

Hydrologic Forecast Centre - Manitoba Transportation and Infrastructure

Assiniboine River near Sturgis

Jun 27, 2024 : 177 cfs

05MC001

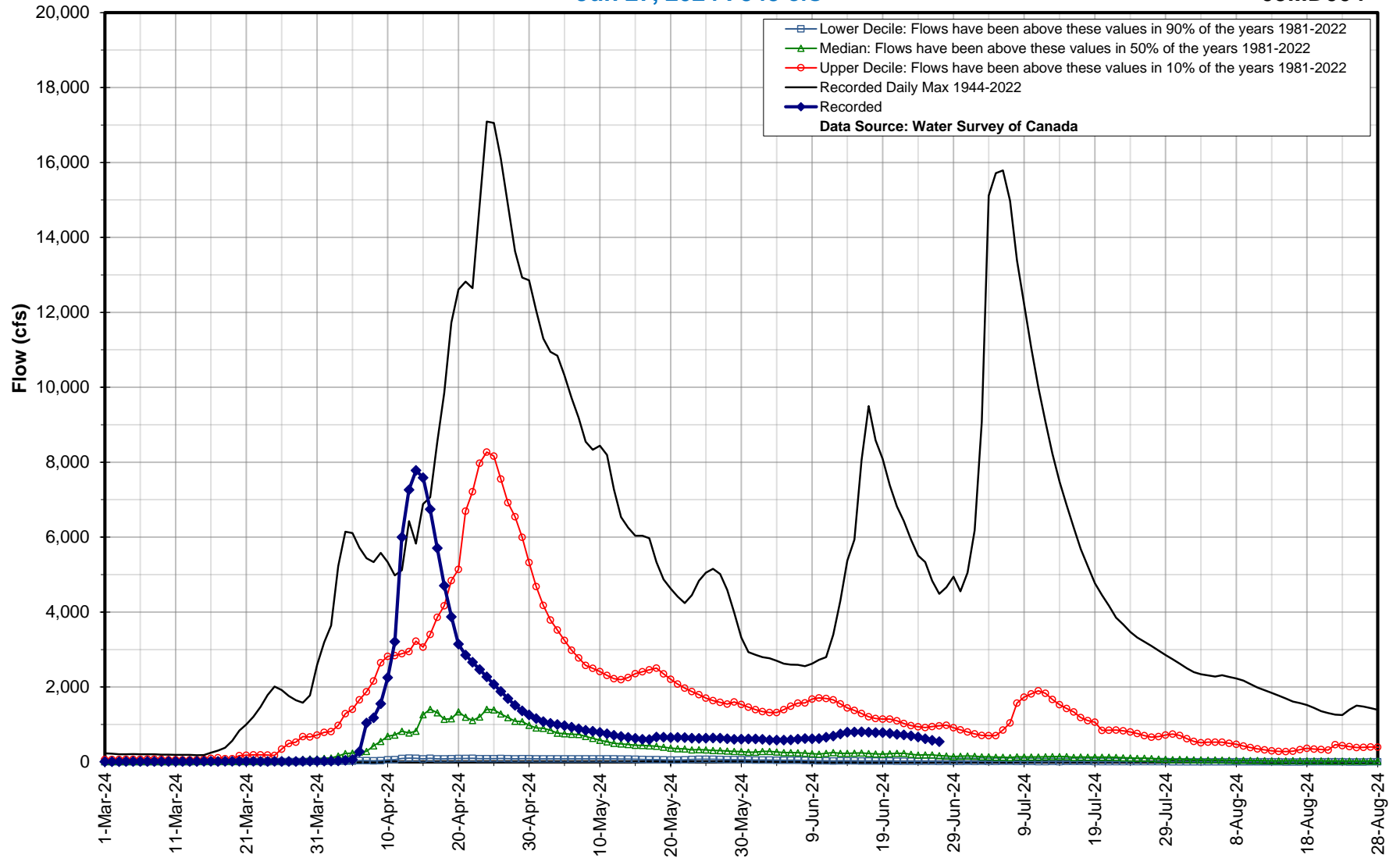


Hydrologic Forecast Centre - Manitoba transportation and Infrastructure

Assiniboine River at Kamsack

Jun 27, 2024 : 545 cfs

05MD004

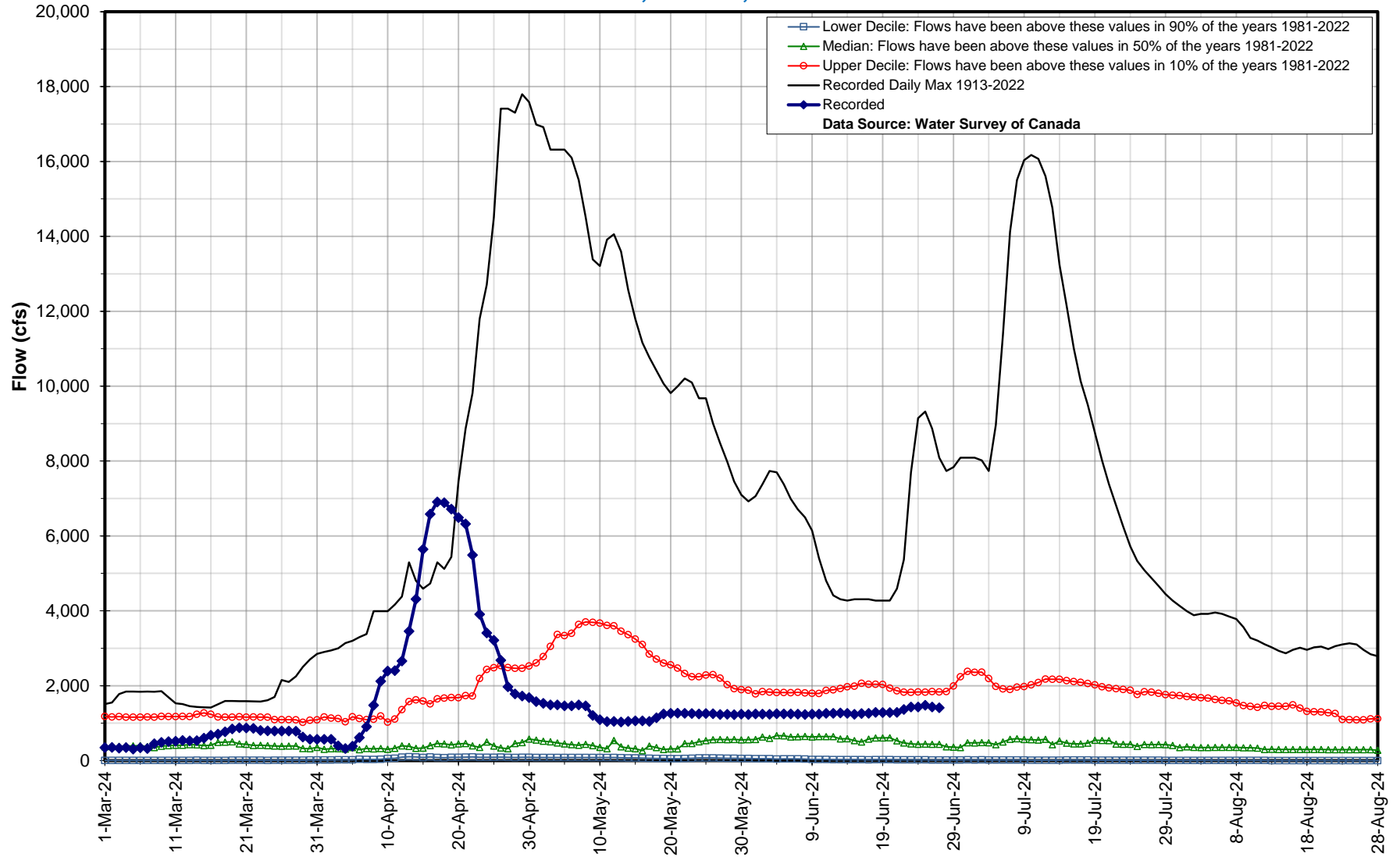


Hydrologic Forecast Centre - Manitoba Transportation and Infrastructure

Assiniboine River near Russell

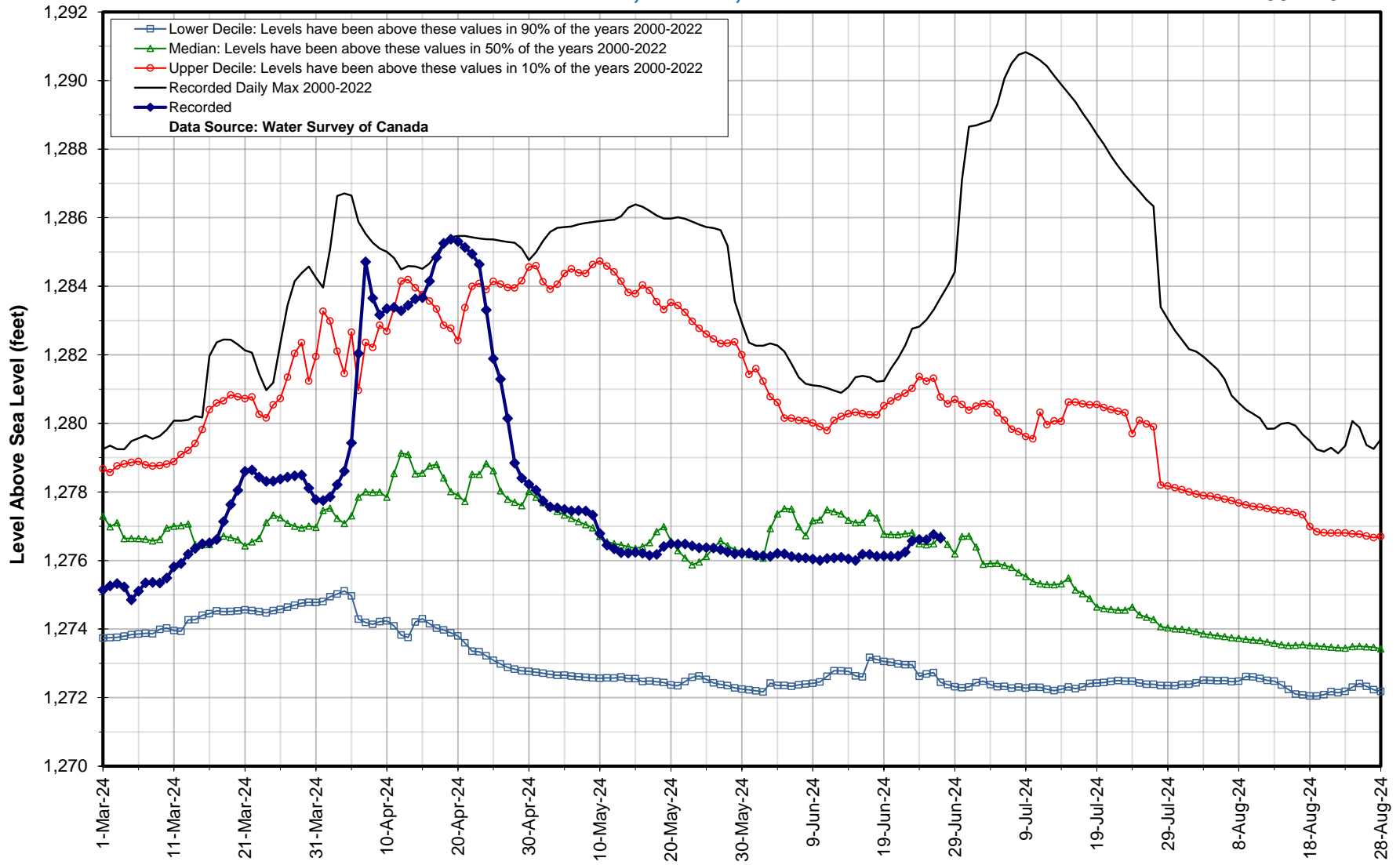
Jun 27, 2024 : 1,415 cfs

05ME001



Hydrologic Forecast Centre - Manitoba Transportation and Infrastructure
Assiniboine River Southwest of St. Lazare
Jun 27, 2024 : 1,276.65 ft

05ME011

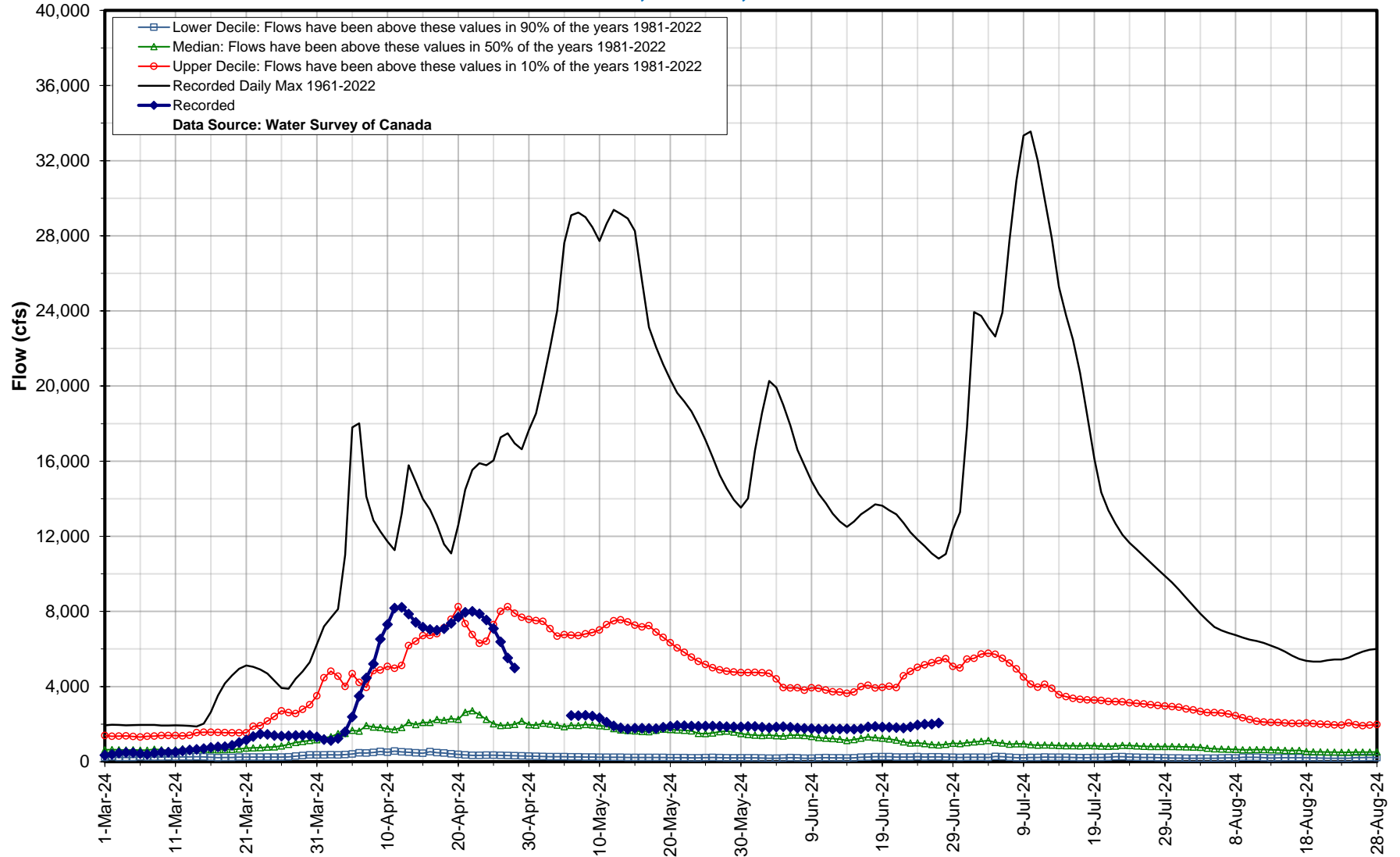


Hydrologic Forecast Centre - Manitoba Transportation and Infrastructure

Assiniboine River near Miniota

Jun 27, 2024 : 2,059 cfs

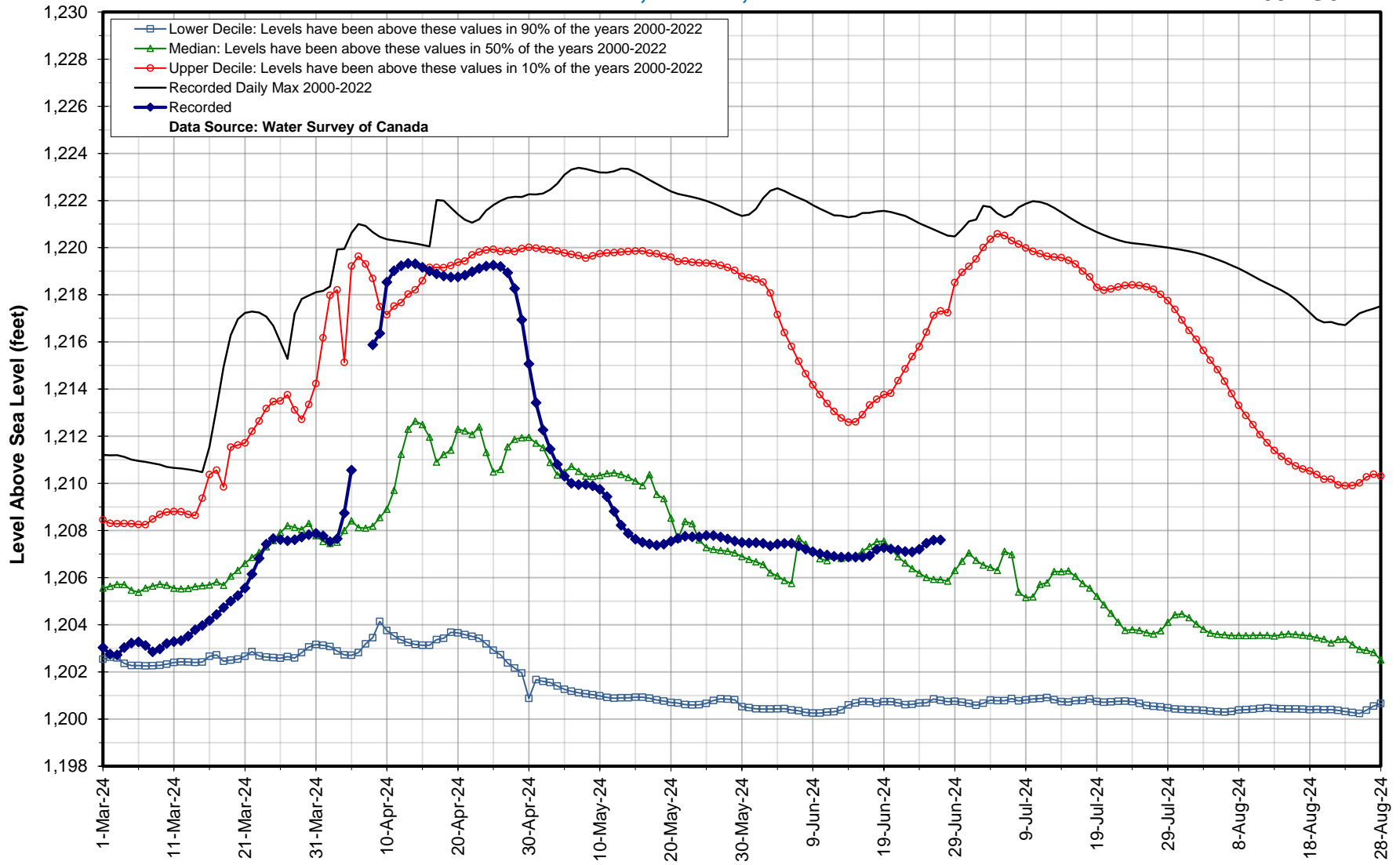
05ME006



Assiniboine River East of Virden

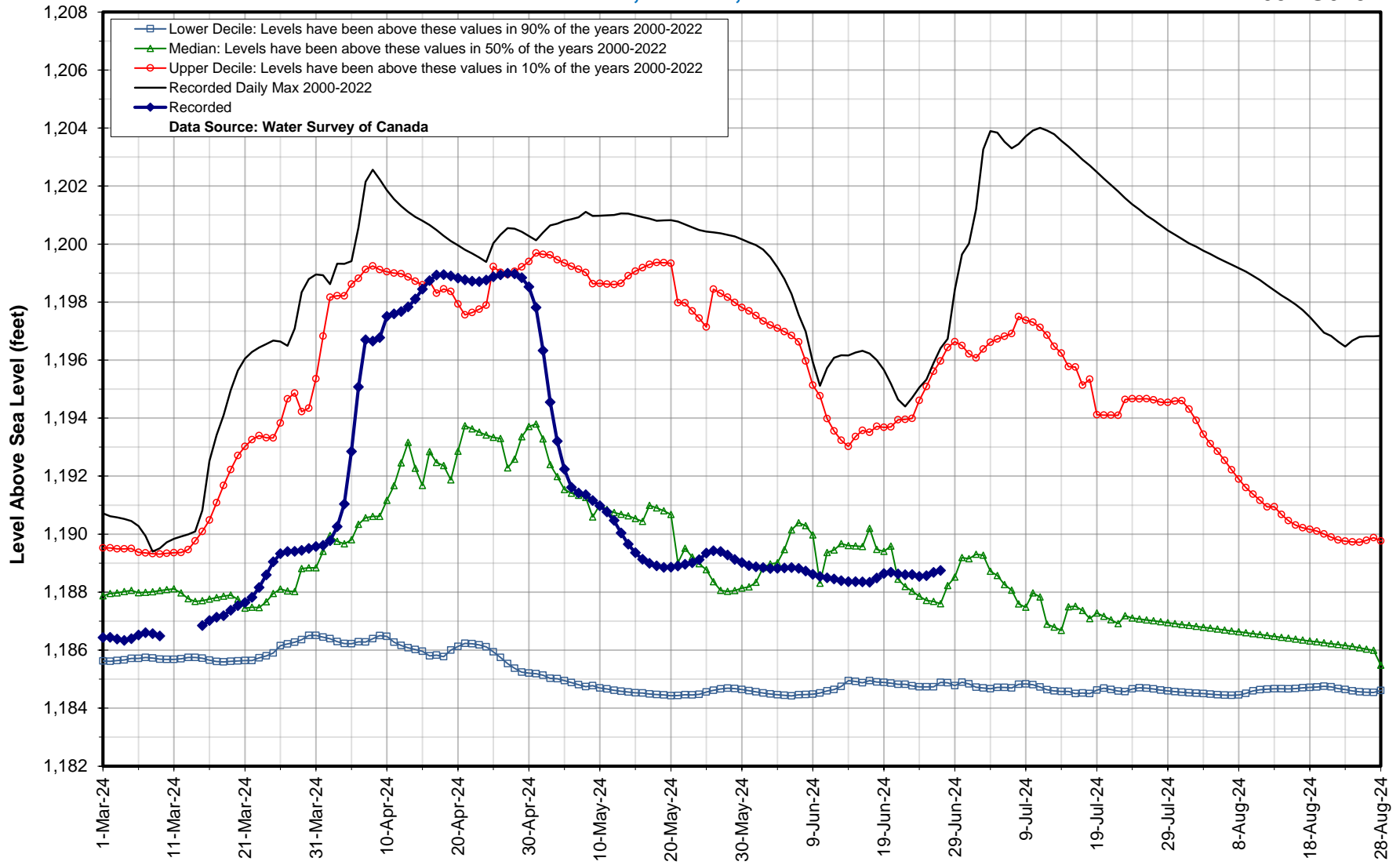
Jun 27, 2024 : 1,207.6 ft

05MG014



Hydrologic Forecast Centre - Manitoba Transportation and Infrastructure
Assiniboine River North of Griswold
Jun 27, 2024 : 1,188.75 ft

05MG013

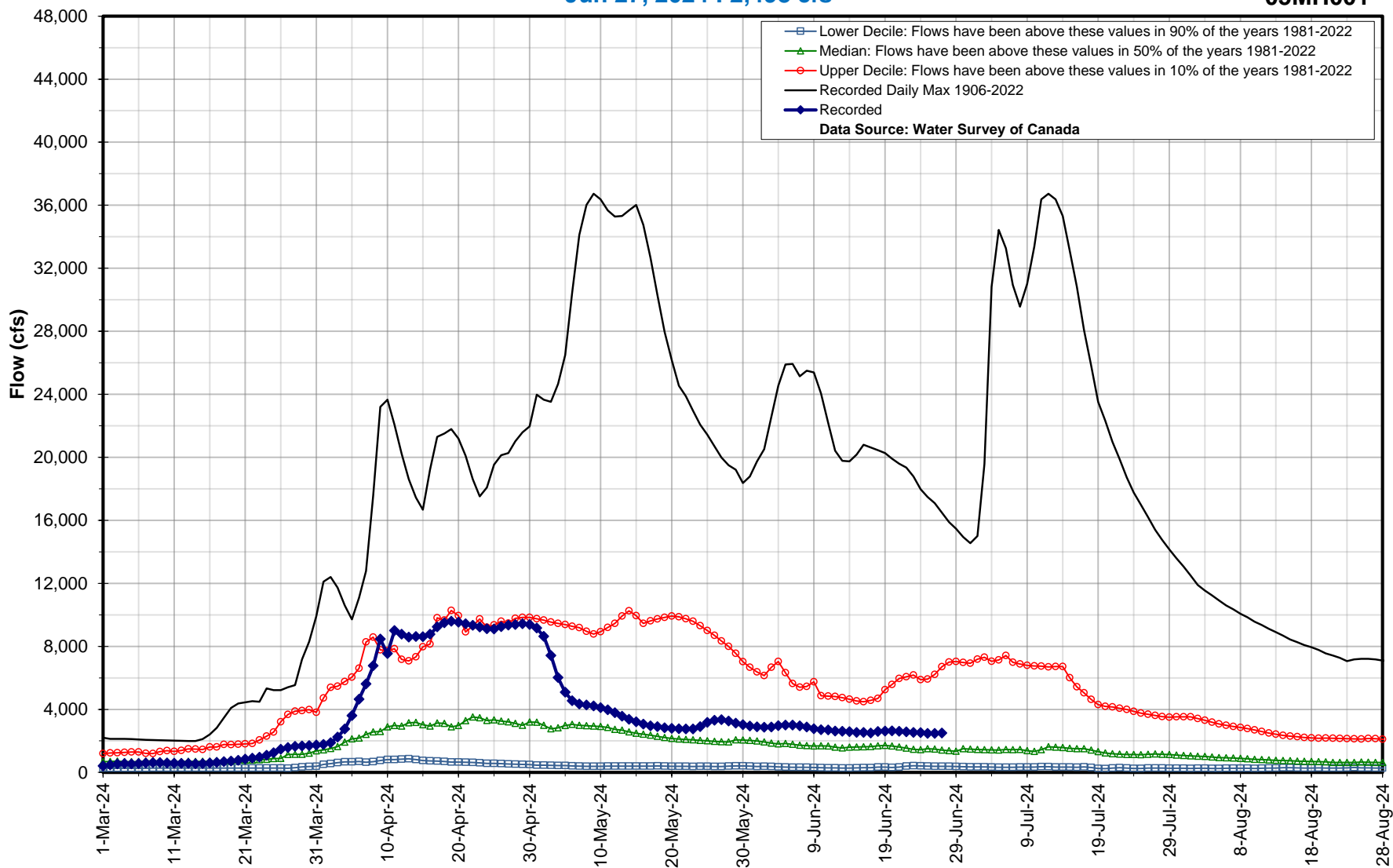


Hydrologic Forecast Centre - Manitoba Transportation and Infrastructure

Assiniboine River at Brandon

Jun 27, 2024 : 2,498 cfs

05MH001



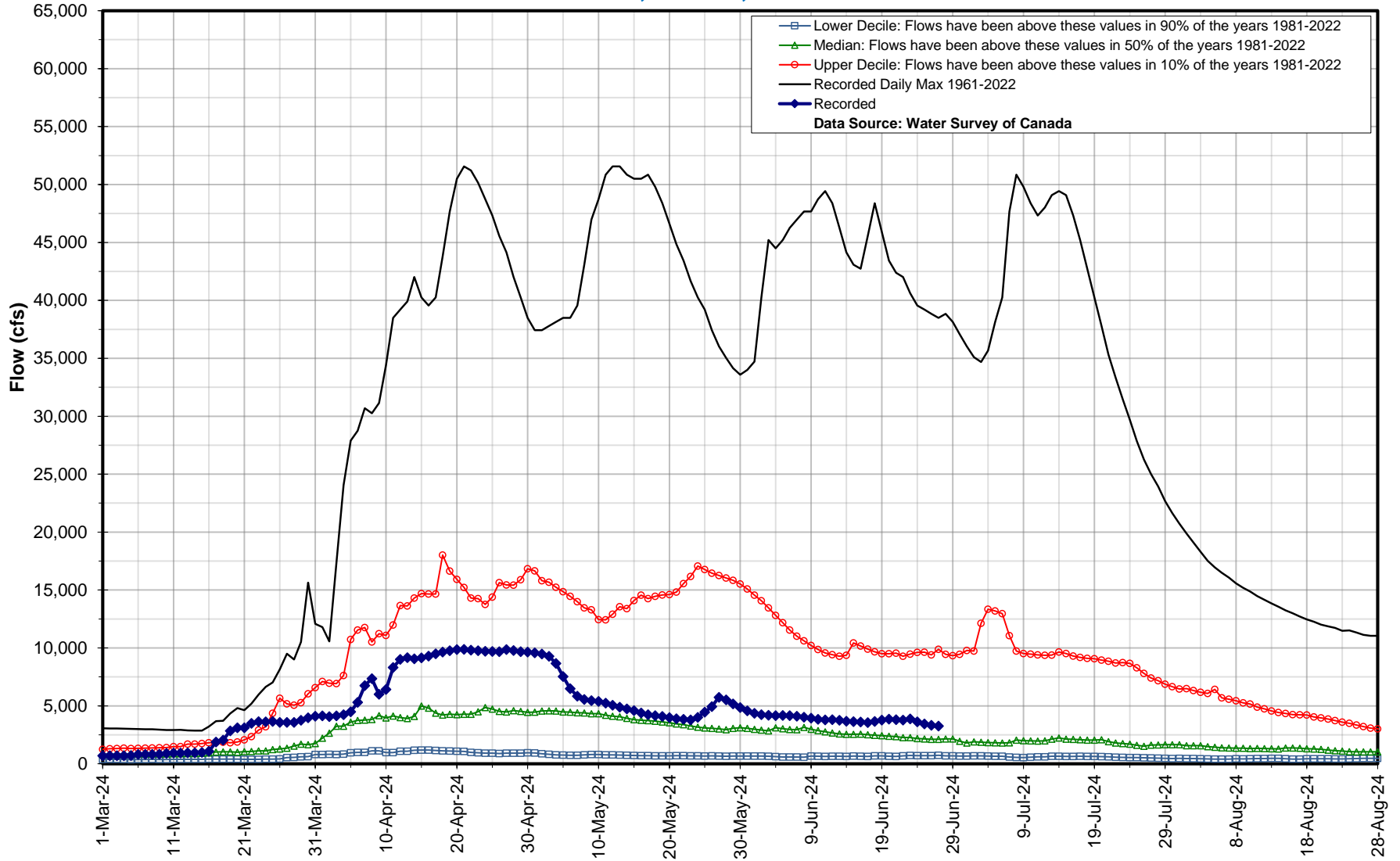
— Lower Decile: Flows have been above these values in 90% of the years 1981-2022
— Median: Flows have been above these values in 50% of the years 1981-2022
— Upper Decile: Flows have been above these values in 10% of the years 1981-2022
— Recorded Daily Max 1906-2022
— Recorded
Data Source: Water Survey of Canada

Hydrologic Forecast Centre - Manitoba Transportation and Infrastructure

Assiniboine River near Holland

Jun 27, 2024 : 3,257 cfs

05MH005

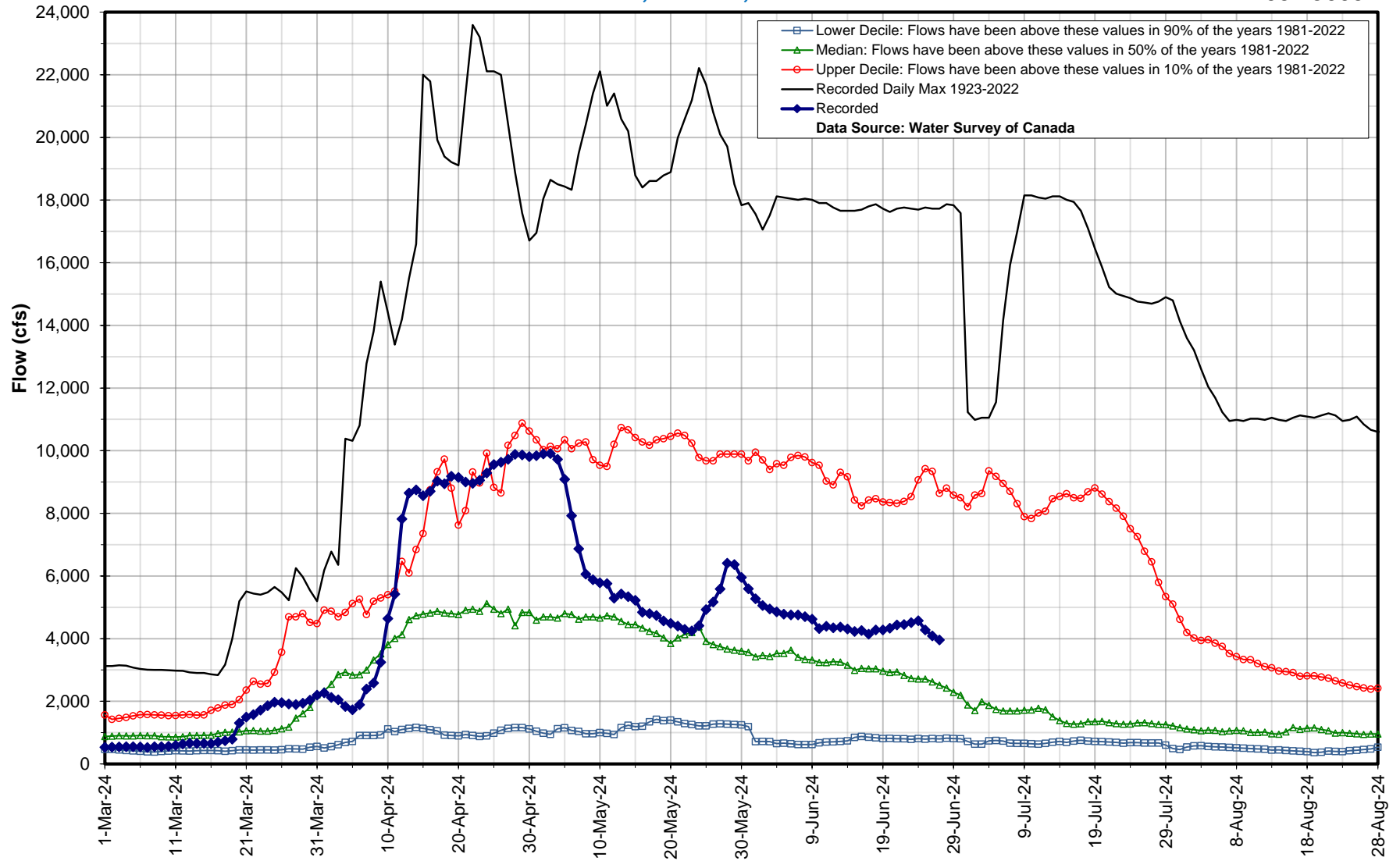


Hydrologic Forecast Centre - Manitoba Transportation and Infrastructure

Assiniboine River near Portage la Prairie

Jun 27, 2024 : 3,959 cfs

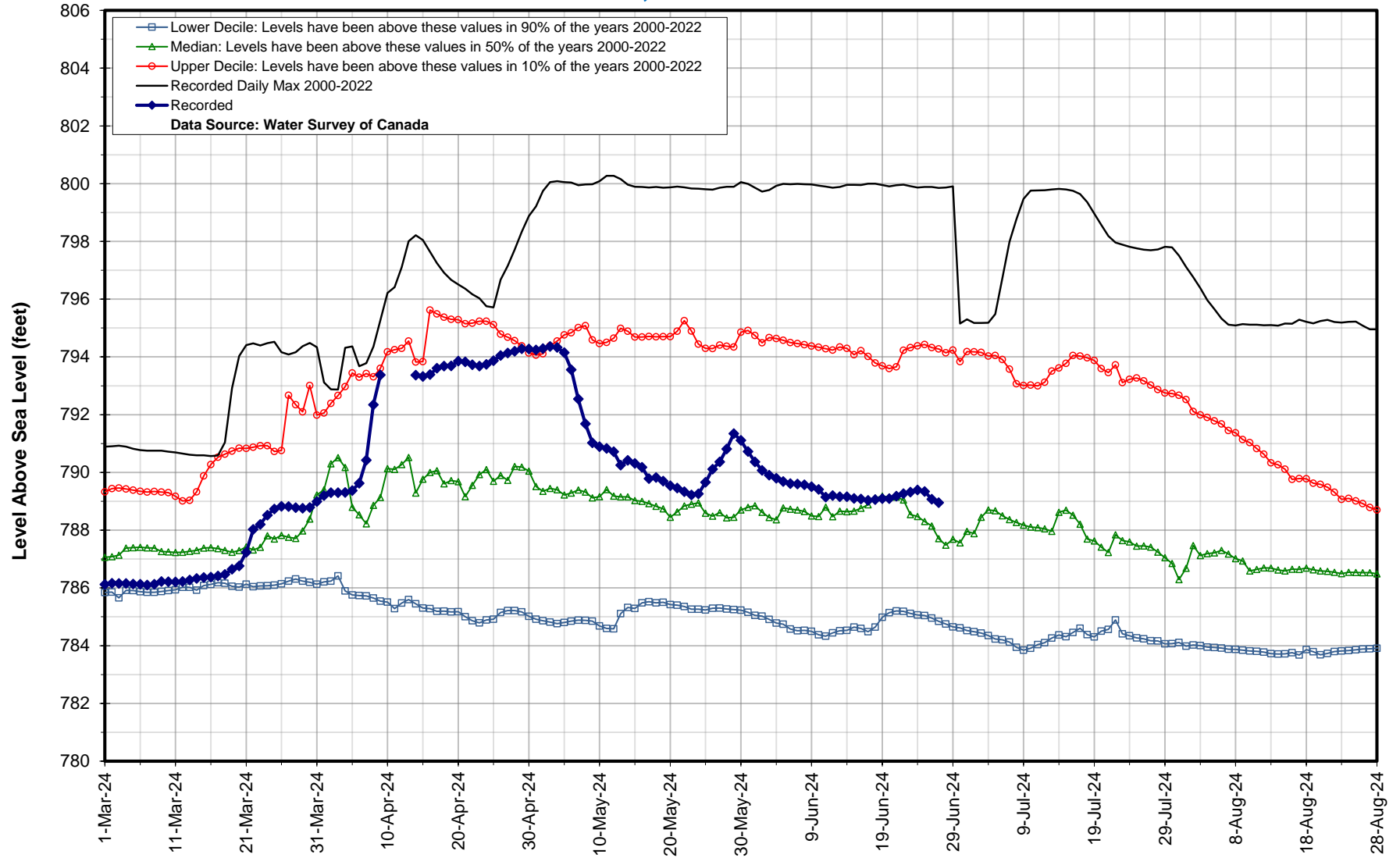
05MJ003



Lower Decile: Flows have been above these values in 90% of the years 1981-2022
Median: Flows have been above these values in 50% of the years 1981-2022
Upper Decile: Flows have been above these values in 10% of the years 1981-2022
Recorded Daily Max 1923-2022
Recorded
Data Source: Water Survey of Canada

Hydrologic Forecast Centre - Manitoba Transportation and Infrastructure
Assiniboine River at Baie St. Paul
Jun 27, 2024 : 788.95 ft

05MJ012

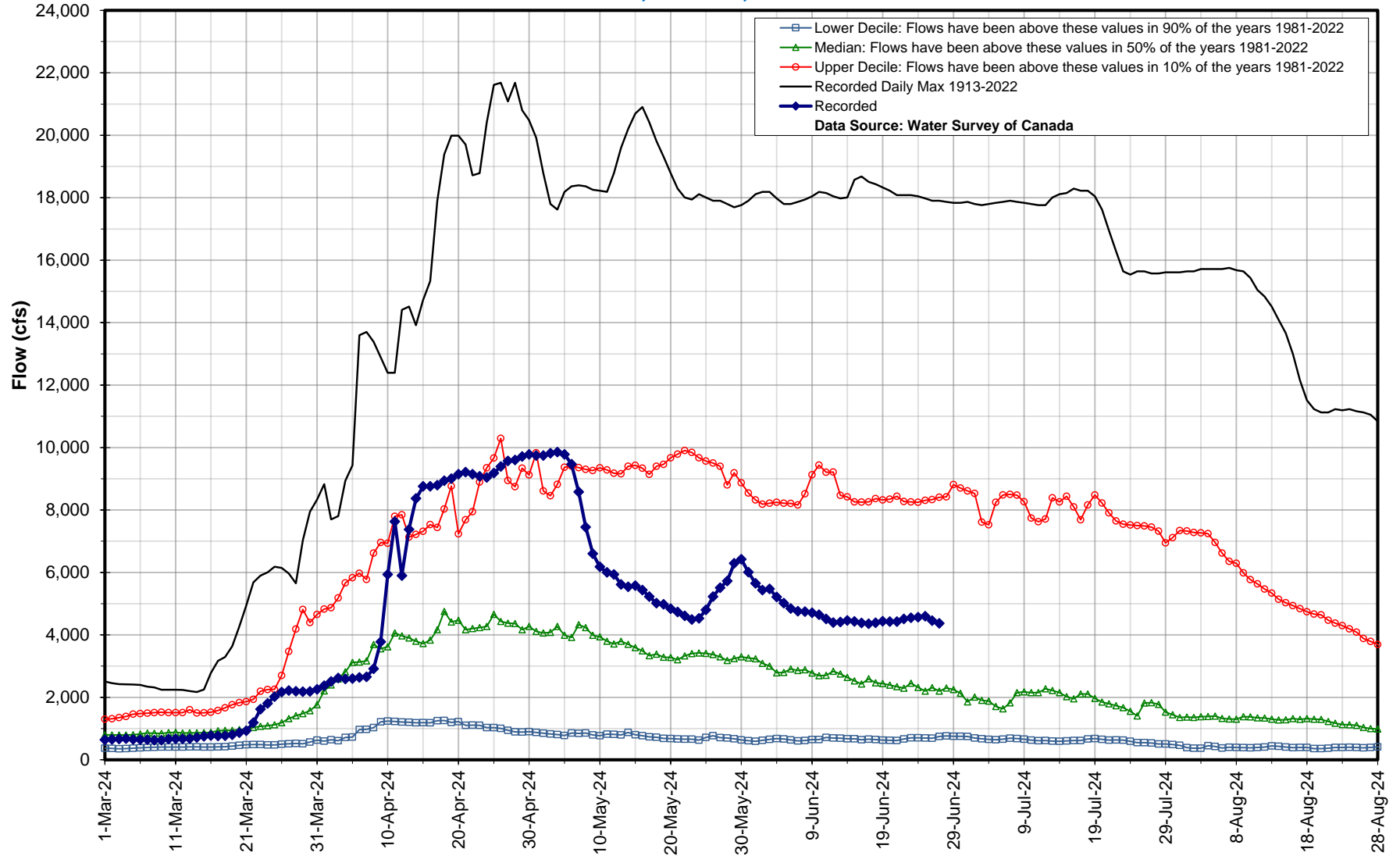


Hydrologic Forecast Centre - Manitoba Transportation and Infrastructure

Assiniboine River at Headingley

Jun 27, 2024 : 4,371 cfs

05MJ001



Data Source: Water Survey of Canada