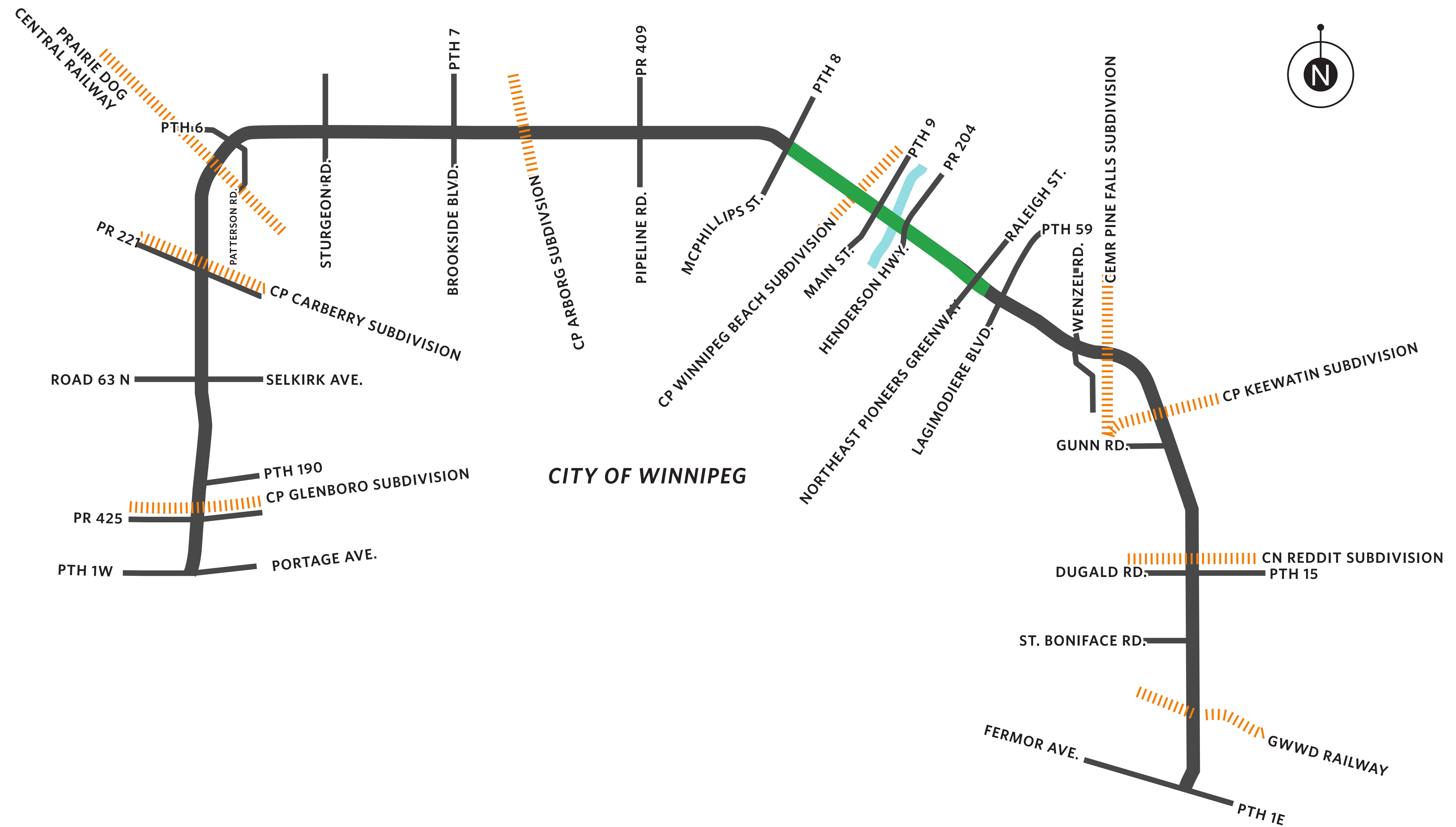


SEGMENT 4

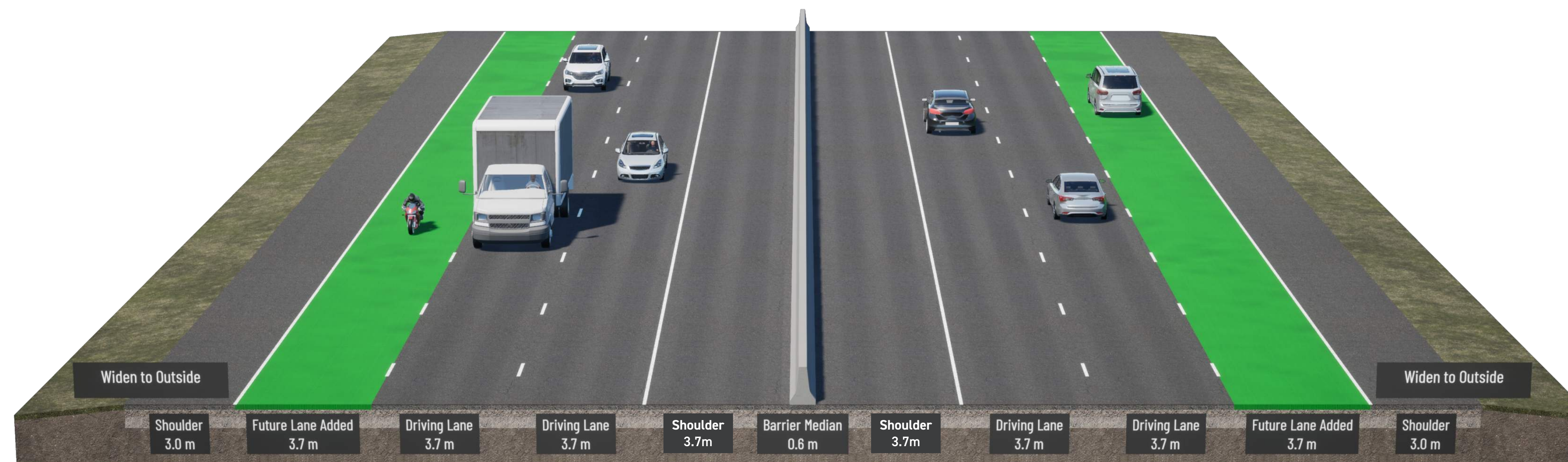
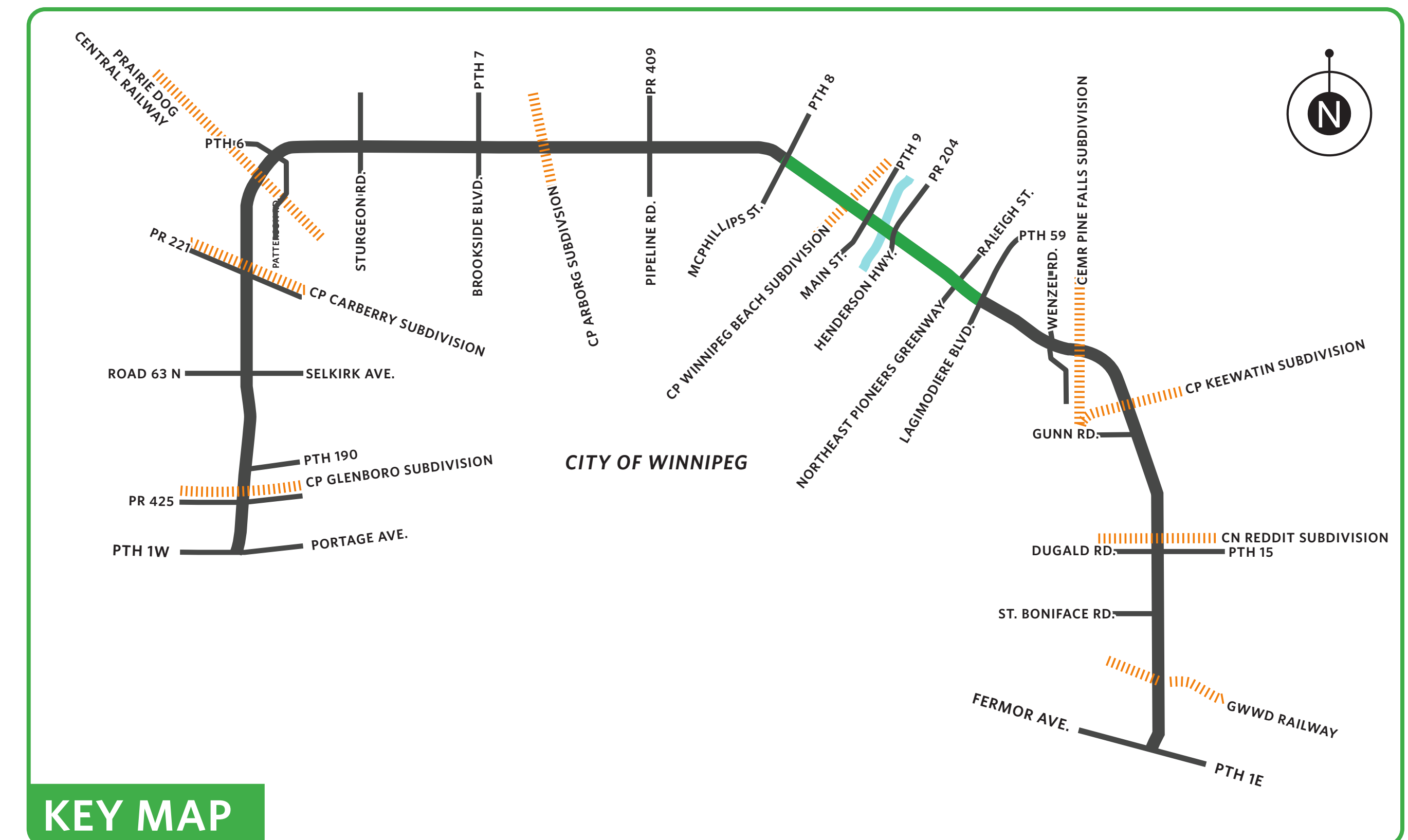
PTH 8 (McPhillips Street) to PTH 59 (Lagimodiere Boulevard)



PTH 8 (McPhillips Street) to PTH 59 (Lagimodiere Boulevard)

Expressway section with median barrier and service roads provided on both sides.

- Recommend staying on existing alignment
- Allows opportunity to utilize the existing structures at PTH 8, PR 204 and PTH 59
- Minimizes impacts to property, utilities and the environment



Westbound PTH 101

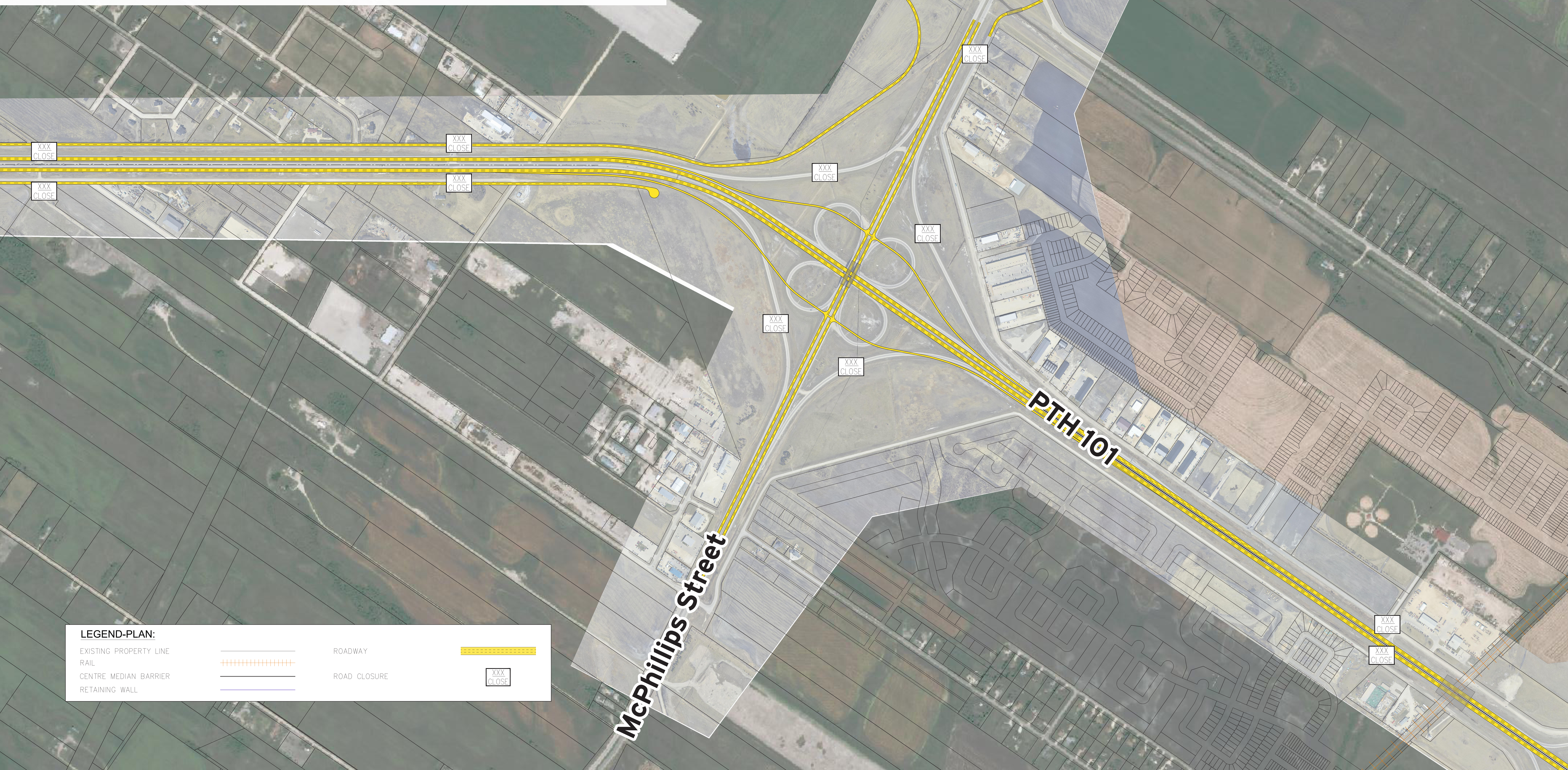
Typical PTH 101 six-lane cross-section

Eastbound PTH 101



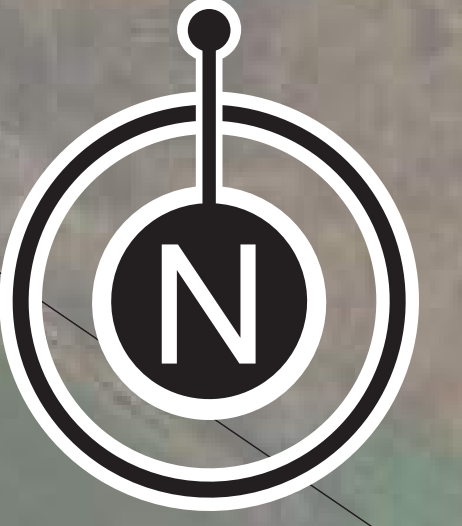
Option 1: Reconfigure Cloverleaf to Diamond Interchange

- Least expensive
- Easily understood by drivers
- Accommodates oversized vehicles
- Longer delays for PTH 8 traffic at ramp intersections



LEGEND-PLAN:

| | | | |
|------------------------|--|--------------|--|
| EXISTING PROPERTY LINE | | ROADWAY | |
| RAIL | | ROAD CLOSURE | |
| CENTRE MEDIAN BARRIER | | | |
| RETAINING WALL | | | |



Option 2: Reconfigure Cloverleaf to Partial Cloverleaf

- Shorter delays for PTH 8 traffic at ramp intersections
- More difficult to accommodate oversized vehicles
- More expensive



LEGEND-PLAN:

| | | | |
|------------------------|--|--------------|--|
| EXISTING PROPERTY LINE | | ROADWAY | |
| RAIL | | ROAD CLOSURE | |
| CENTRE MEDIAN BARRIER | | | |
| RETAINING WALL | | | |



Option 3: Reconfigure Cloverleaf to Diverging Diamond

- Shorter delays for PTH 8 traffic at ramp intersections
- Eliminates turns against opposing traffic
- Difficult to construct
- Most expensive
- Unfamiliar configuration for drivers



LEGEND-PLAN:

| | | | |
|------------------------|--|--------------|--|
| EXISTING PROPERTY LINE | | ROADWAY | |
| RAIL | | ROAD CLOSURE | |
| CENTRE MEDIAN BARRIER | | | |
| RETAINING WALL | | | |



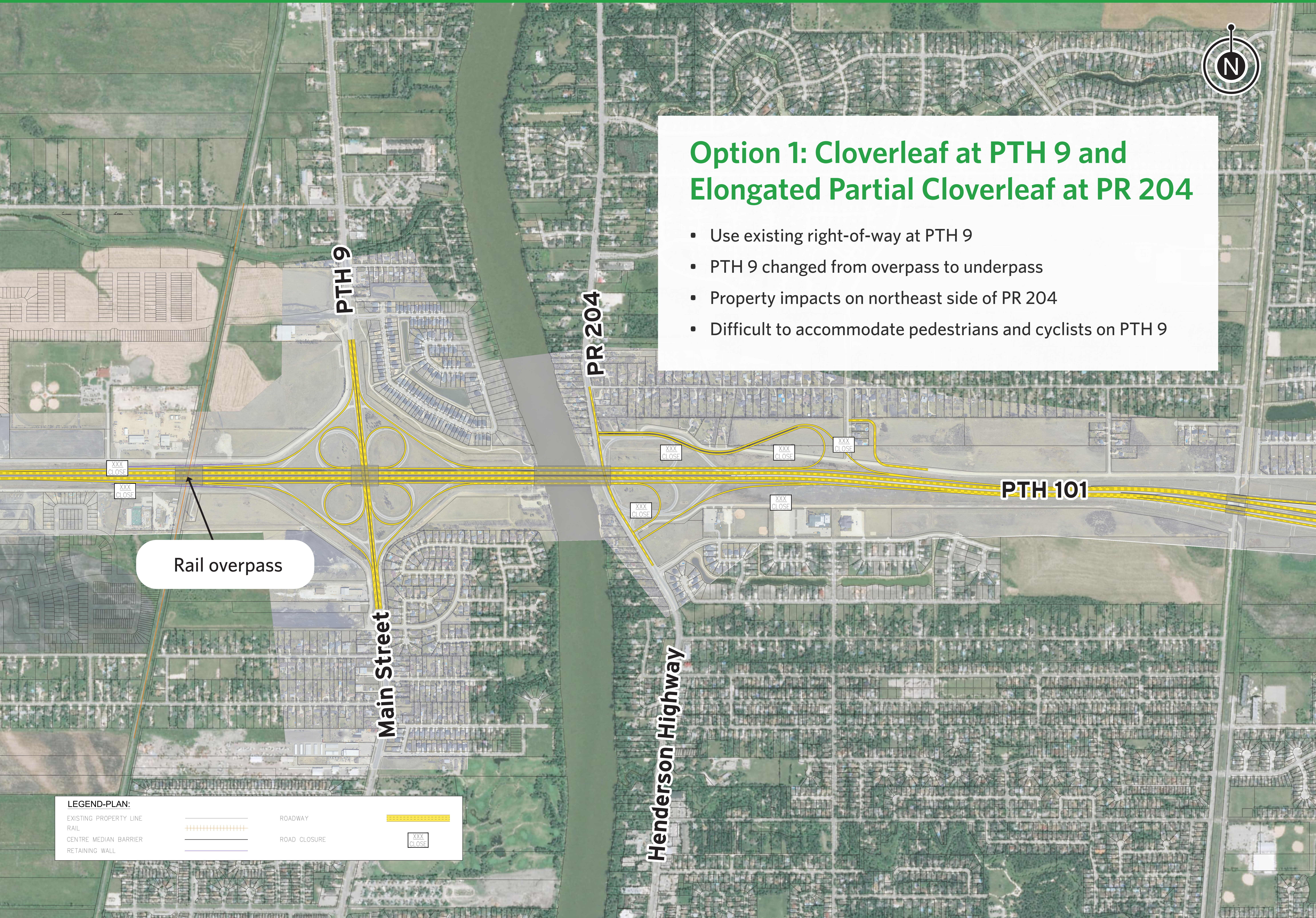
Option 1: Cloverleaf at PTH 9 and Elongated Partial Cloverleaf at PR 204

- Use existing right-of-way at PTH 9
- PTH 9 changed from overpass to underpass
- Property impacts on northeast side of PR 204
- Difficult to accommodate pedestrians and cyclists on PTH 9

Rail overpass

LEGEND-PLAN:

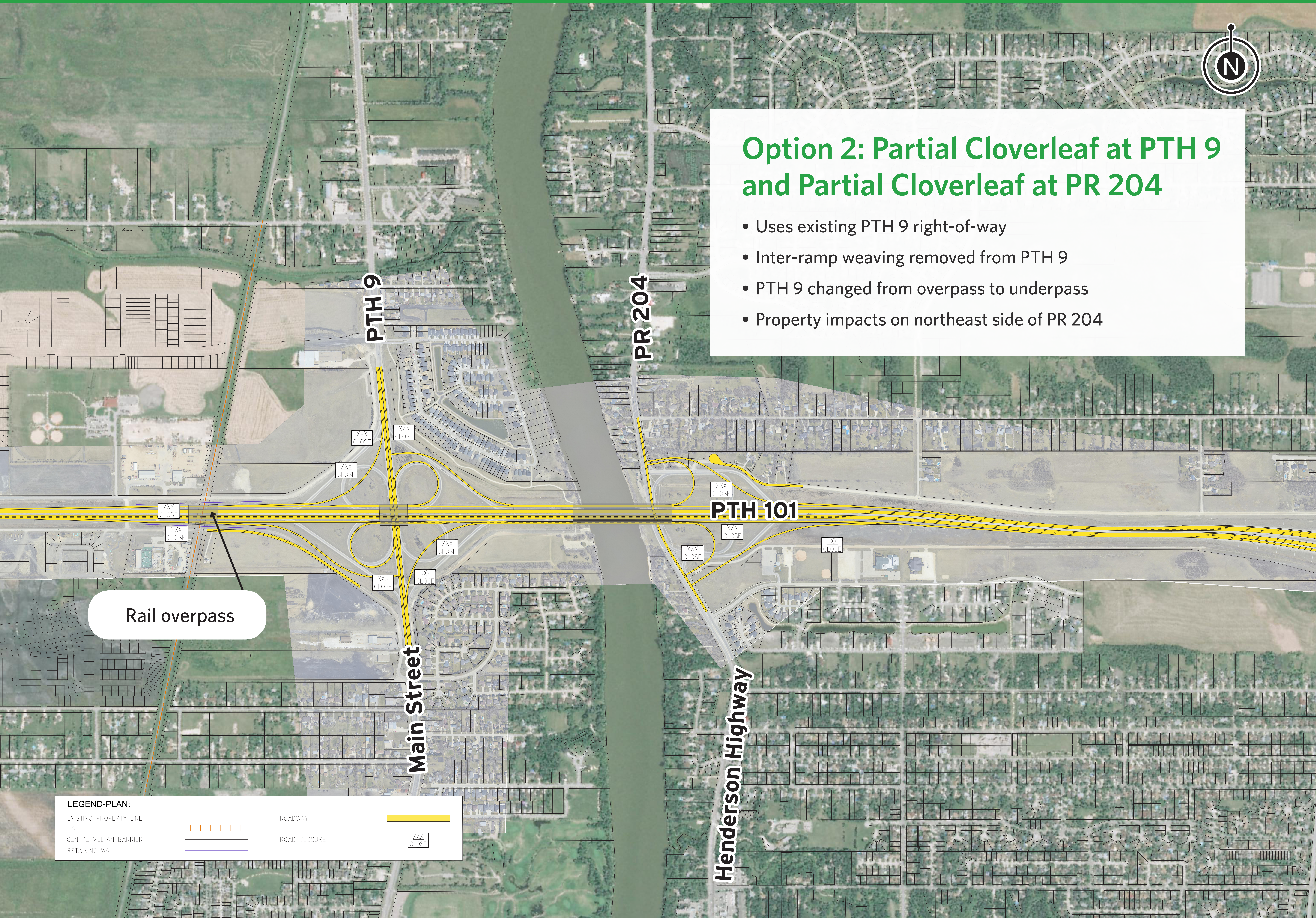
| | | | |
|------------------------|--|--------------|--|
| EXISTING PROPERTY LINE | | ROADWAY | |
| RAIL | | ROAD CLOSURE | |
| CENTRE MEDIAN BARRIER | | | |
| RETAINING WALL | | | |





Option 2: Partial Cloverleaf at PTH 9 and Partial Cloverleaf at PR 204

- Uses existing PTH 9 right-of-way
- Inter-ramp weaving removed from PTH 9
- PTH 9 changed from overpass to underpass
- Property impacts on northeast side of PR 204



Rail overpass

LEGEND-PLAN:

| | | | |
|------------------------|--|--------------|--|
| EXISTING PROPERTY LINE | | ROADWAY | |
| RAIL | | ROAD CLOSURE | |
| CENTRE MEDIAN BARRIER | | | |
| RETAINING WALL | | | |