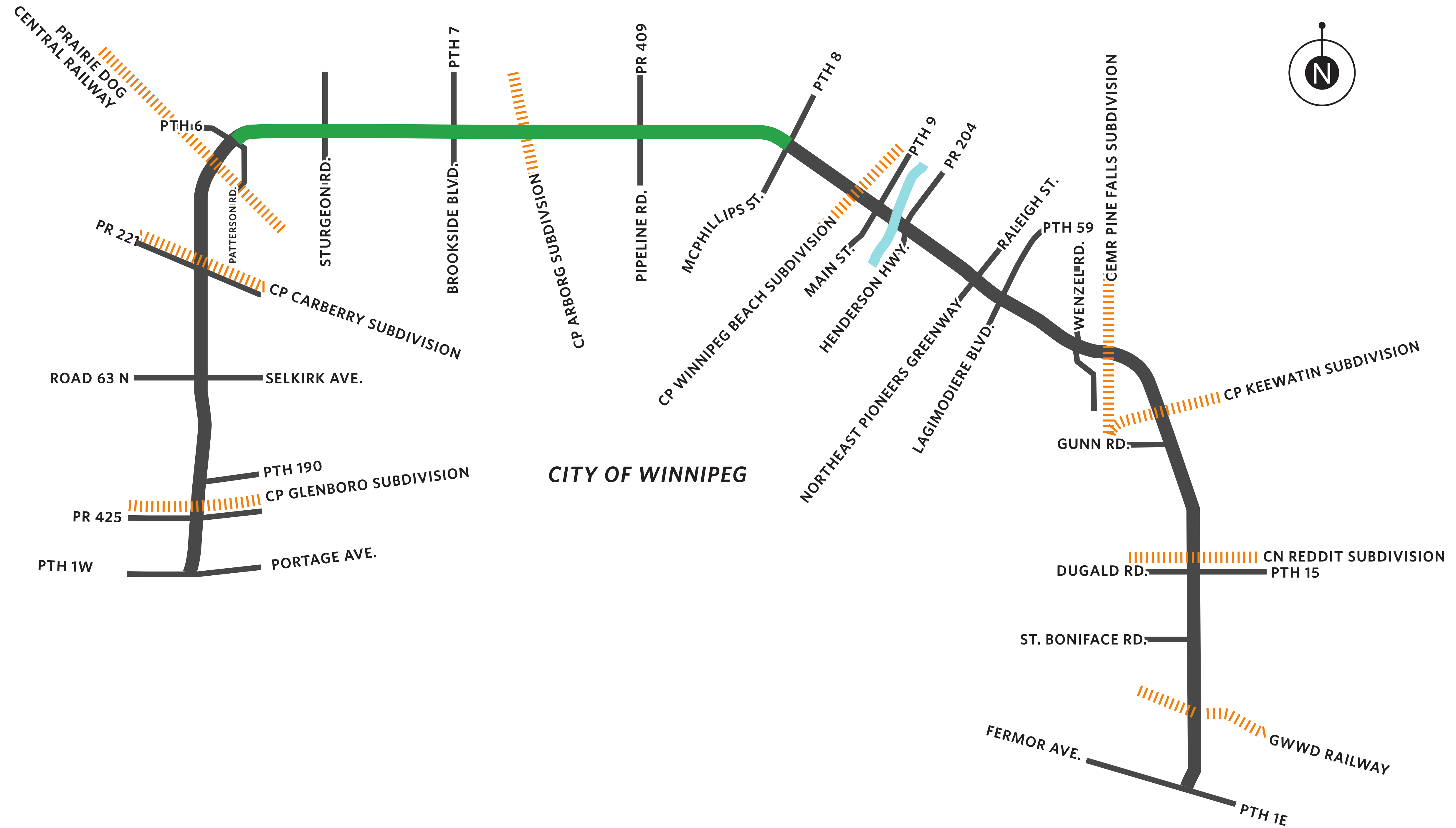


PTH 6 to PR 409 (Pipeline Road)



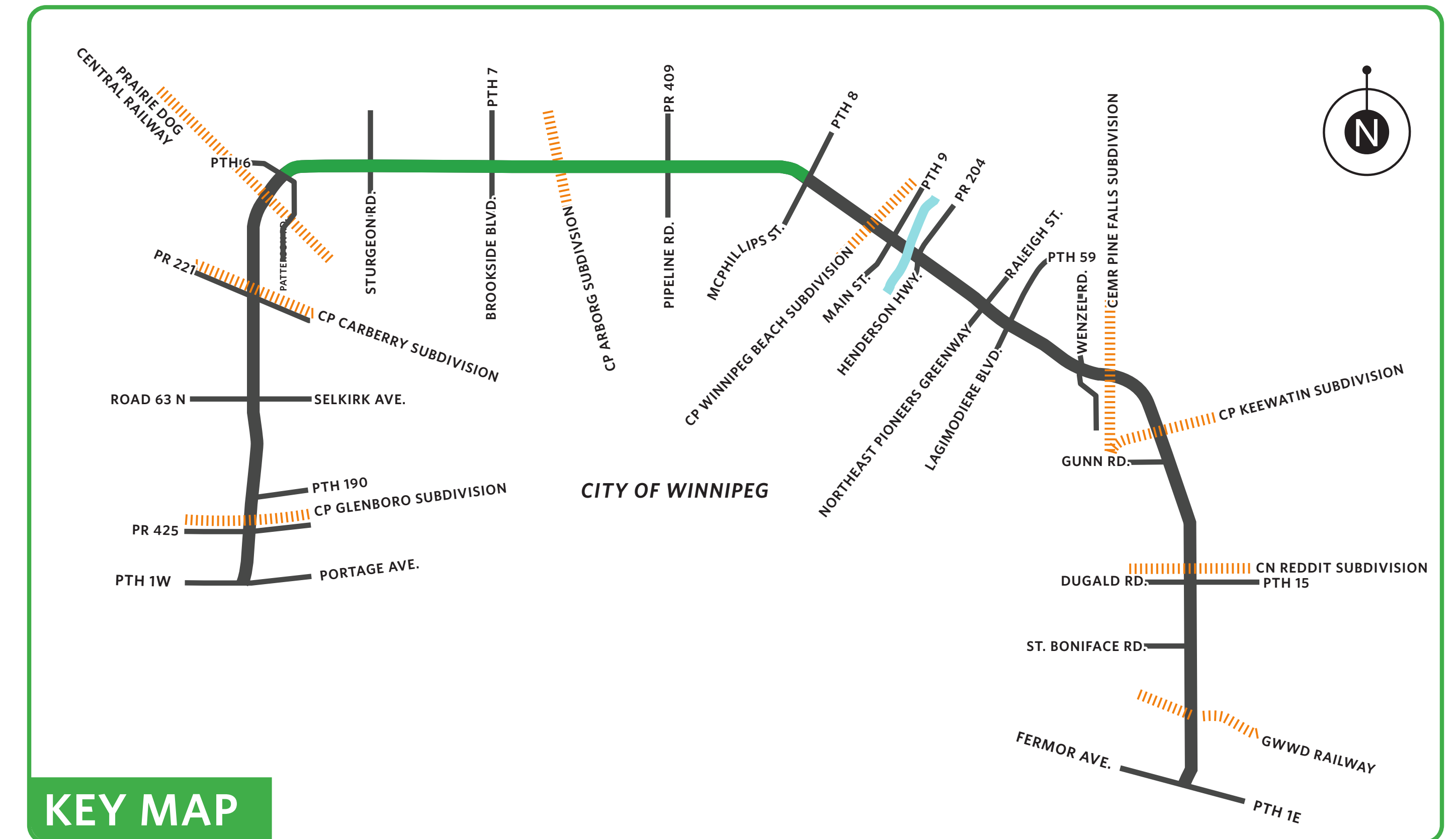
PTH 101 Alignment

The North Perimeter (PTH 101) Highway Design Study

PTH 6 to PTH 8 (McPhillips Street)

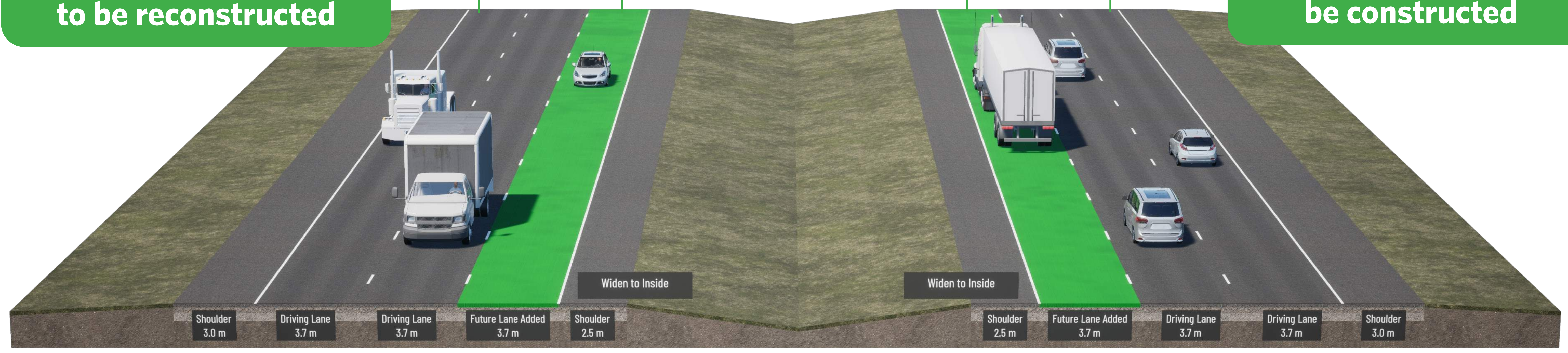
Expressway section with service roads provided on each side.

- Recommend constructing new eastbound lanes south of existing eastbound lanes (alignment shifted south)
- Property and utility impacts would be more significant if widening occurred to the north, with environmental impacts similar in both options



Existing westbound lanes to be reconstructed

New eastbound lanes to be constructed



Westbound PTH 101

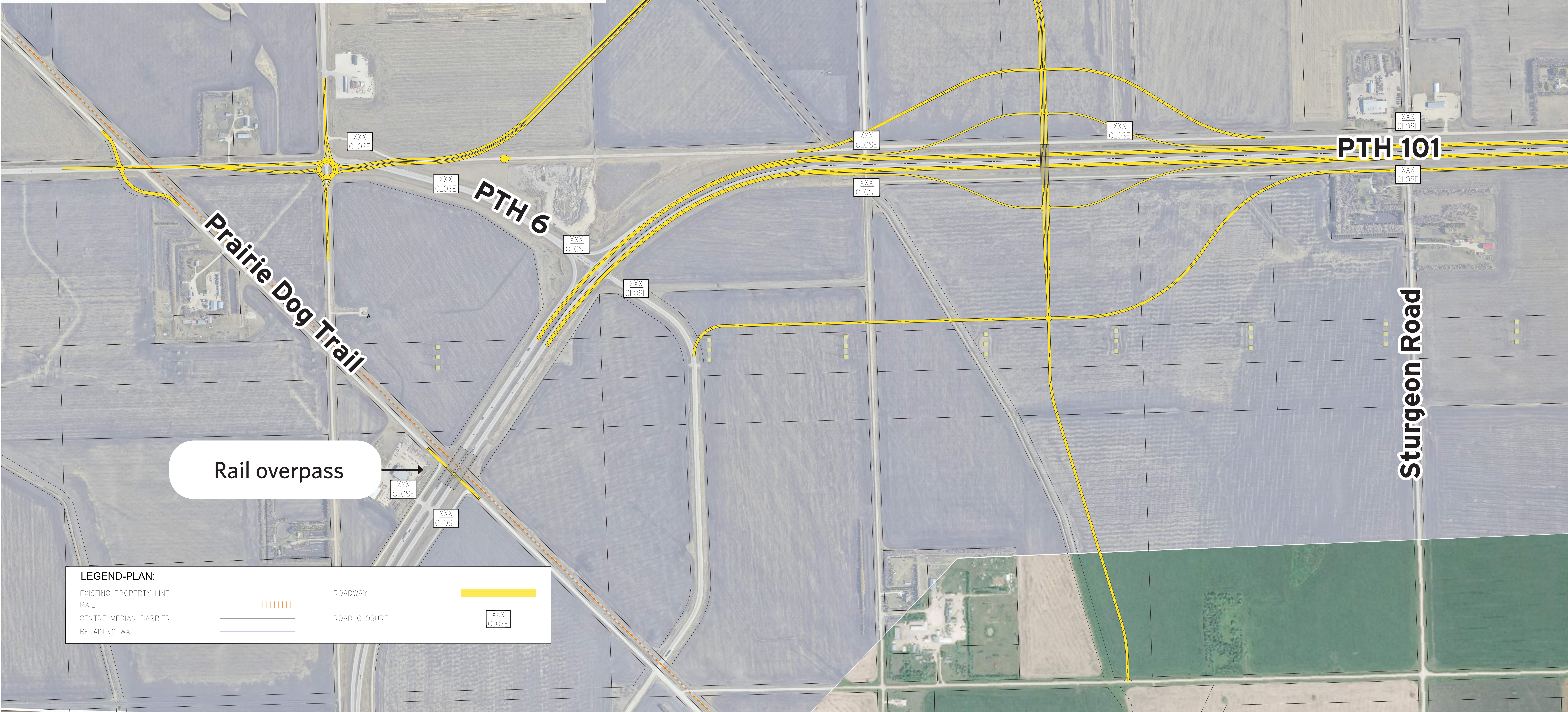
Typical PTH 101 six-lane cross-section

Eastbound PTH 101



Option 1: Single Diamond connecting to roundabout and Rail Overpass at Prairie Dog Central

- Diamond interchange located between PTH 6 and Sturgeon Road
- Simplest configuration
- Least expensive
- Easily understood by drivers
- Easily accommodates oversized vehicles
- Less property impacts
- Less environmental impacts
- All access through PTH 6

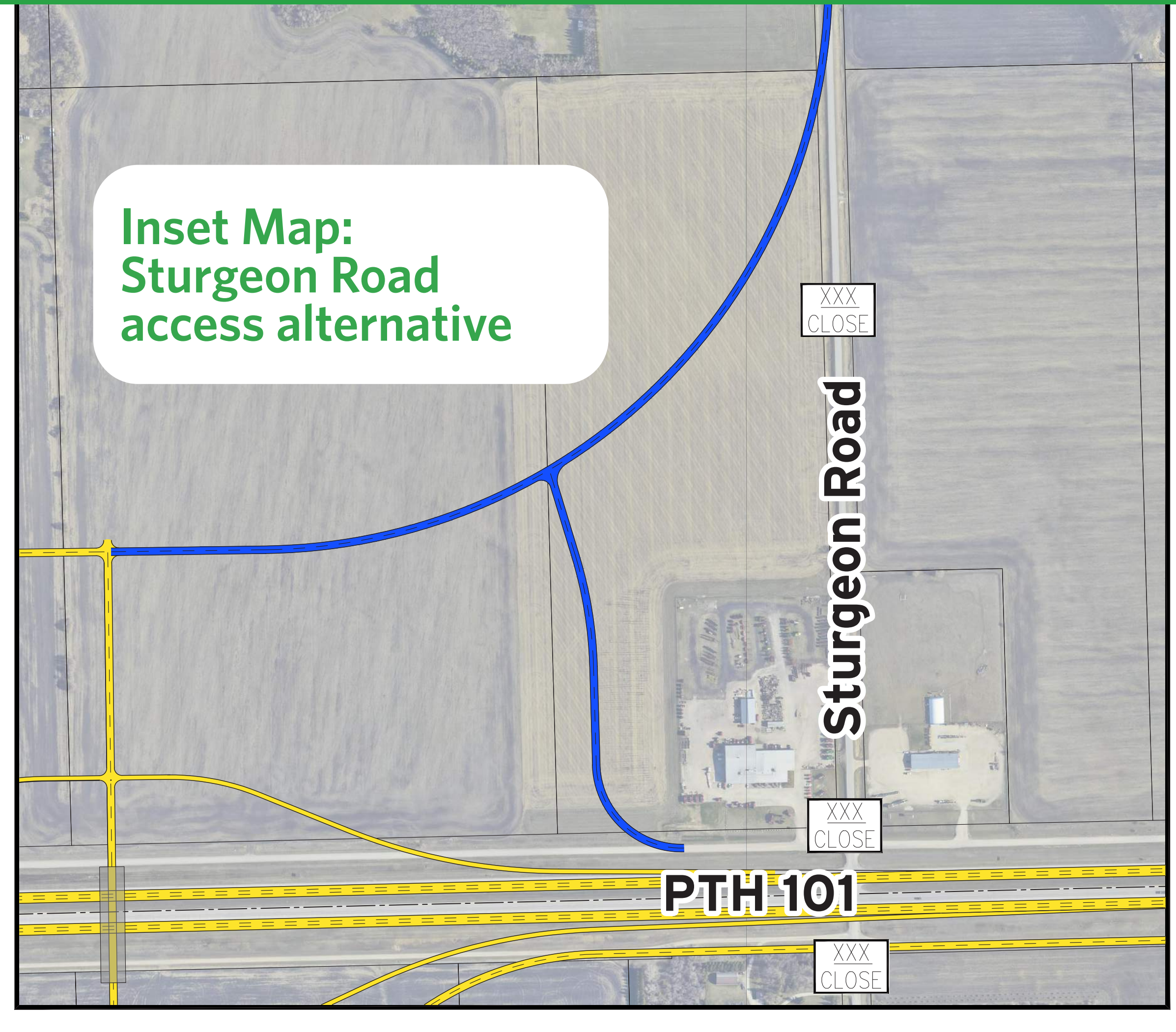


Rail overpass

LEGEND-PLAN:	
EXISTING PROPERTY LINE	—
RAIL	—+—+—+—+—+—+—+—+—
CENTRE MEDIAN BARRIER	— — — — — — — — —
RETAINING WALL	—
ROADWAY	—
ROAD CLOSURE	XXX CLOSE



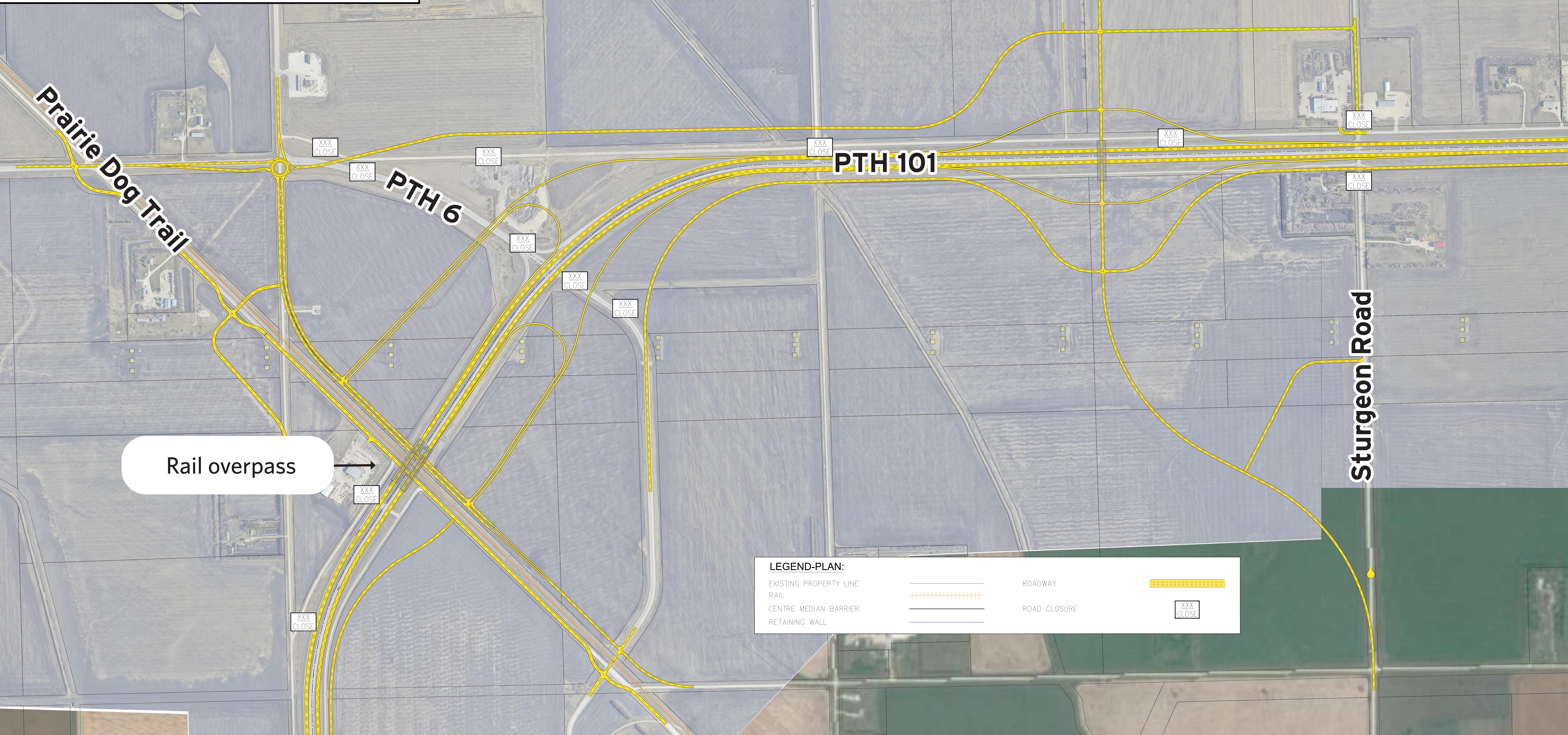
Inset Map:
Sturgeon Road
access alternative



Option 2: Diamond Interchange west of Sturgeon Road and Partial Cloverleaf/Rail Overpass south of PTH 6

- Most expensive
- Easily understood by drivers
- Accommodates oversized vehicles
- Difficult to construct
- More environmental impacts

See inset map for
Sturgeon Road access
alternative



Rail overpass

LEGEND-PLAN:

EXISTING PROPERTY LINE		ROADWAY	
RAIL		ROAD CLOSURE	
CENTRE MEDIAN BARRIER			
RETAINING WALL			



Inset Map:
Sturgeon Road
access alternative

Option 3: Partial Cloverleaf west of Sturgeon Road and Partial Cloverleaf/Rail Overpass south of PTH 6

- Most expensive
- Easily understood by drivers
- Difficult to construct
- More environmental impacts

See inset map for
Sturgeon Road
access alternative

Prairie Dog Trail

Rail overpass

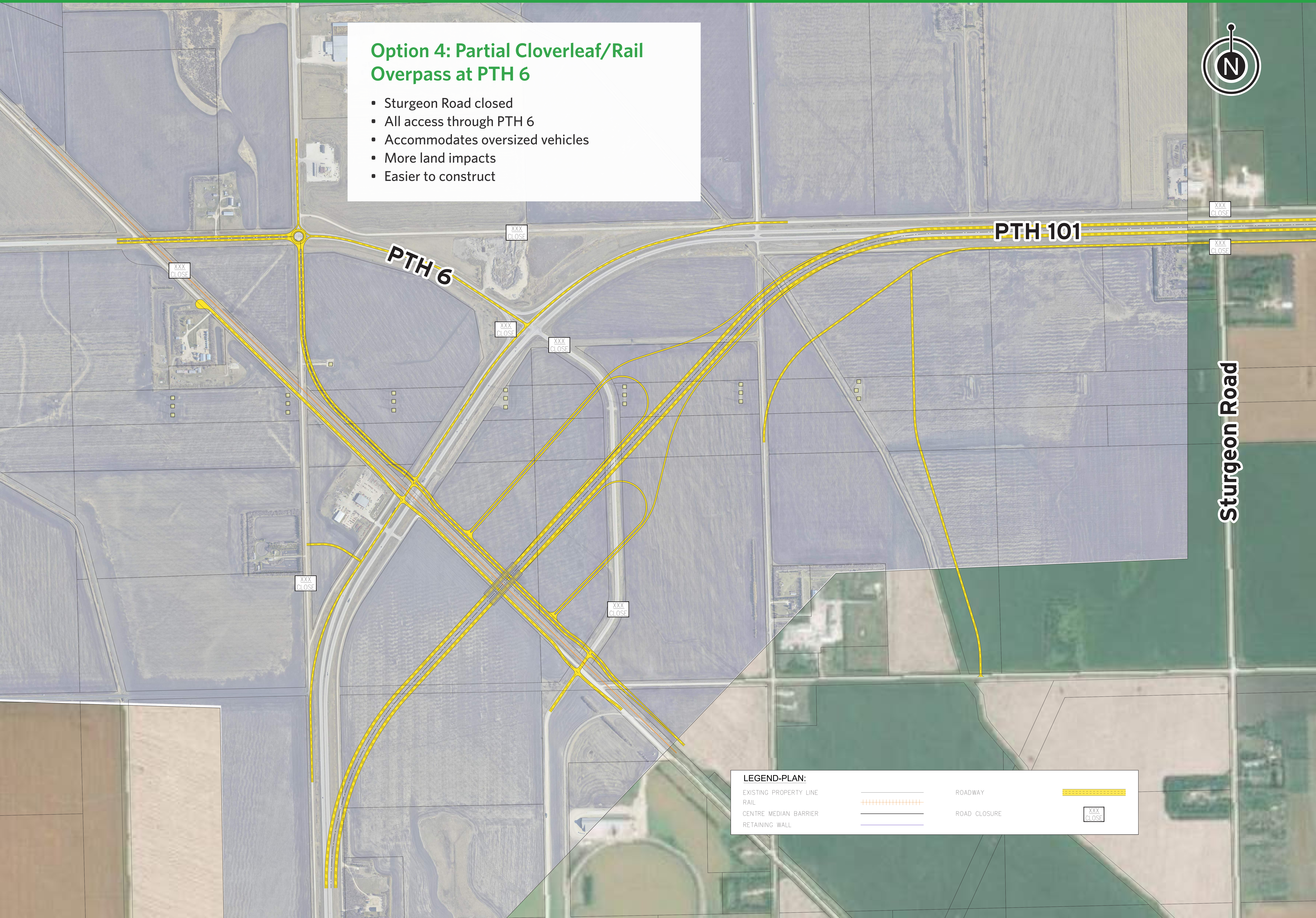
LEGEND-PLAN:

EXISTING PROPERTY LINE		ROADWAY	
RAIL		ROAD CLOSURE	
CENTRE MEDIAN BARRIER			
RETAINING WALL			



Option 4: Partial Cloverleaf/Rail Overpass at PTH 6

- Sturgeon Road closed
- All access through PTH 6
- Accommodates oversized vehicles
- More land impacts
- Easier to construct



PTH 101

PTH 6

Sturgeon Road

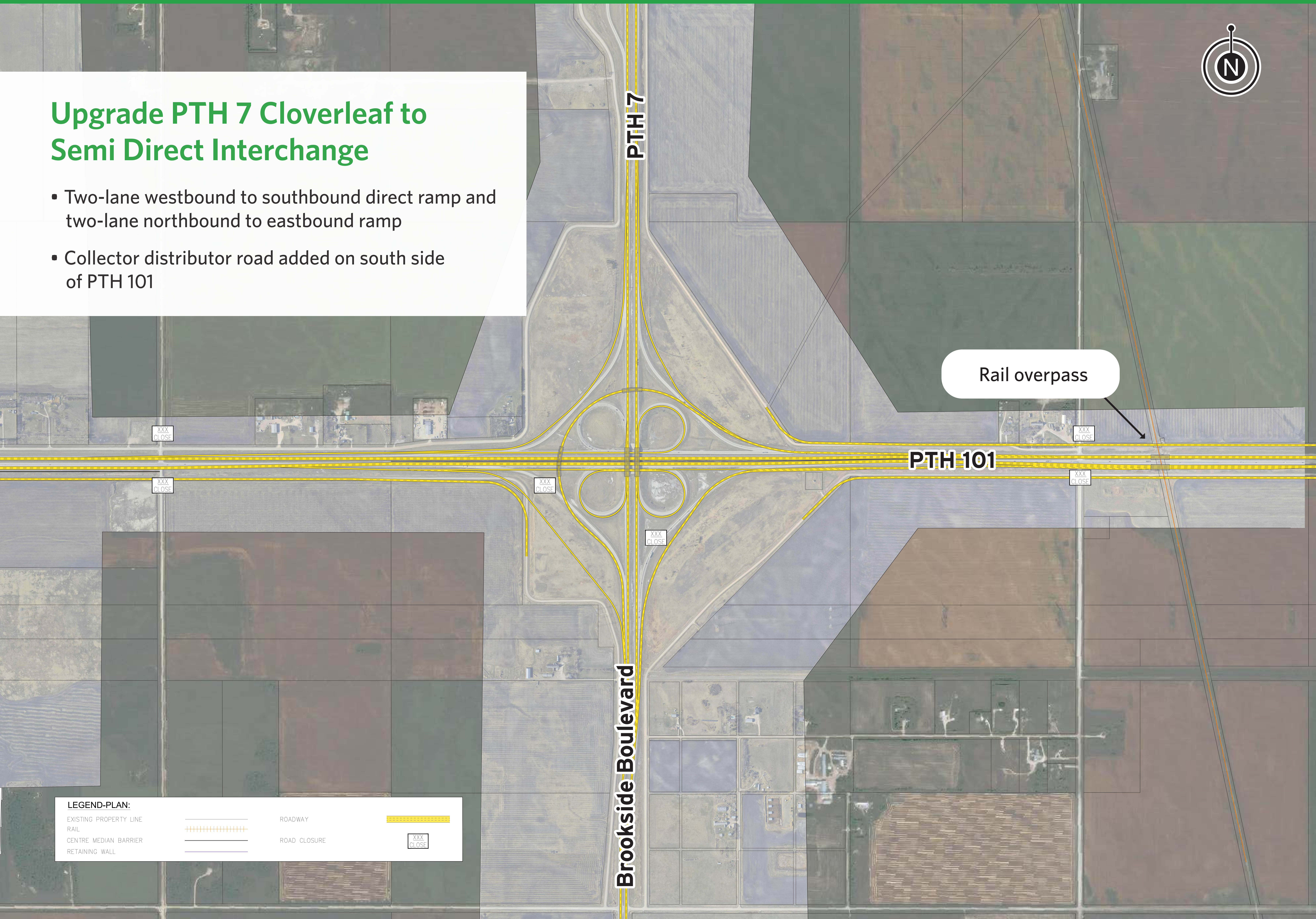
LEGEND-PLAN:

EXISTING PROPERTY LINE		ROADWAY	
RAIL		ROAD CLOSURE	
CENTRE MEDIAN BARRIER			
RETAINING WALL			



Upgrade PTH 7 Cloverleaf to Semi Direct Interchange

- Two-lane westbound to southbound direct ramp and two-lane northbound to eastbound ramp
- Collector distributor road added on south side of PTH 101



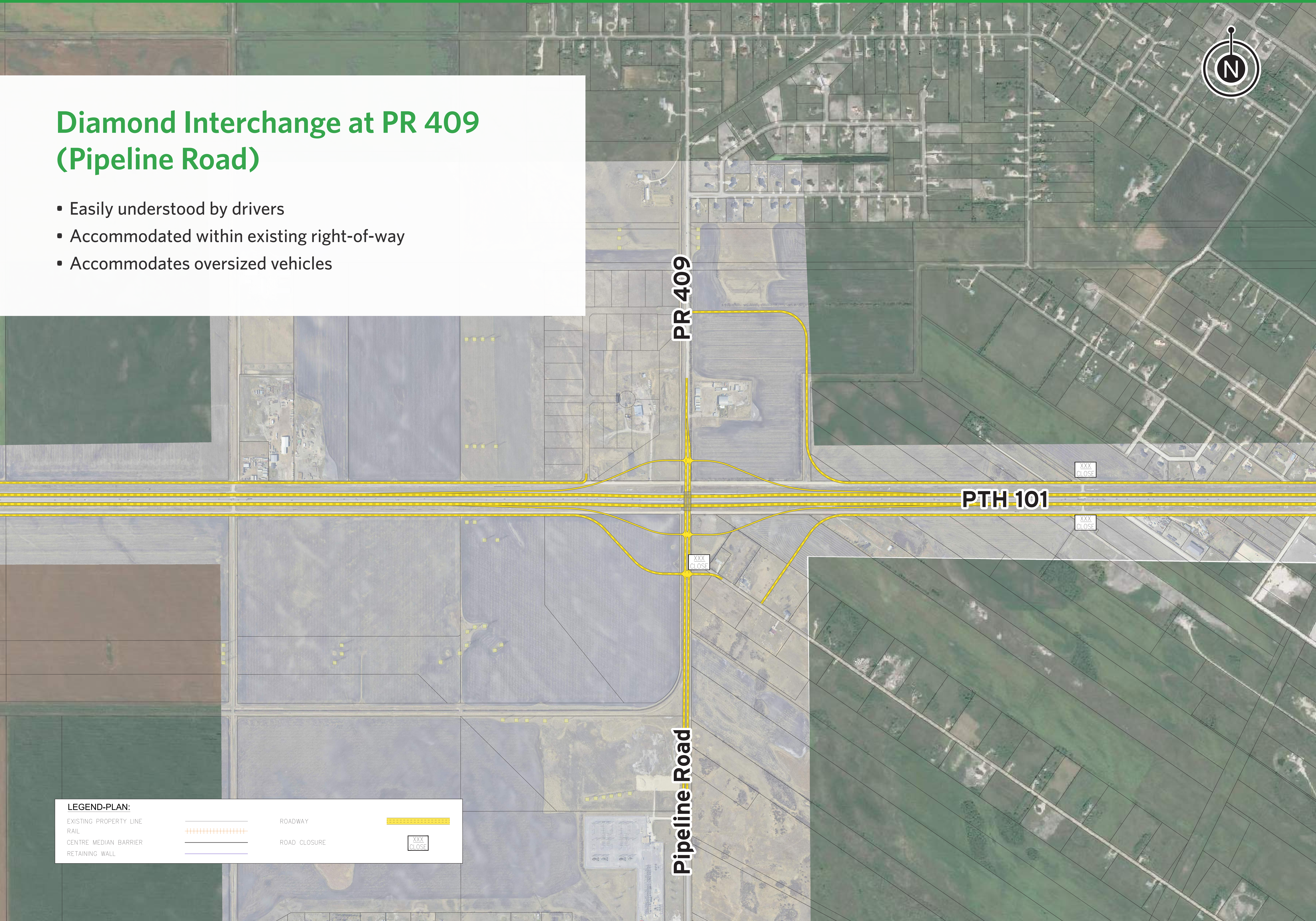
LEGEND-PLAN:

EXISTING PROPERTY LINE		ROADWAY	
RAIL		ROAD CLOSURE	
CENTRE MEDIAN BARRIER			
RETAINING WALL			



Diamond Interchange at PR 409 (Pipeline Road)

- Easily understood by drivers
- Accommodated within existing right-of-way
- Accommodates oversized vehicles



LEGEND-PLAN:

EXISTING PROPERTY LINE		ROADWAY	
RAIL		ROAD CLOSURE	
CENTRE MEDIAN BARRIER			
RETAINING WALL			