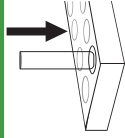


Step 1: Set Up

Step 1.1

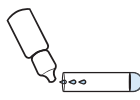
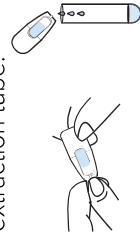
Before collecting the sample, place the extraction tube into the tube stand so it stands upright.



Step 1.2 Gently mix the extraction buffer bottle.

Empty the entire contents of one buffer bottle to the single use extraction tube, add **10 drops** into the extraction tube.

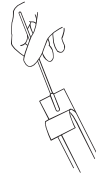
Without touching the contents of one buffer bottle to the single use extraction tube, add **10 drops** into the extraction tube.



Step 2 - Option A: Nasopharyngeal Swab

Step 2a.1

Remove the swab from its packaging.



Step 2a.2

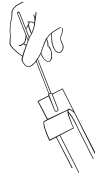
Gently insert the sterile swab into the nostril parallel to the palate, not upwards. The distance should be equivalent to that from the ear to the nostril of the patient, indicating contact with the nasopharynx, or until resistance is encountered. Gently rub and roll the swab, leave in place several seconds to saturate tip with secretions. Slowly remove the swab while rotating it.



Step 2 - Option B: Nasal Swab

Step 2b.1

Remove the swab from its packaging.



Step 2b.2

Tilt patient's head back 70°. Insert the swab through the anterior nares in contact with nasal septum at least 0.5 inches inside the nostril until mild resistance is encountered at the middle turbinate.



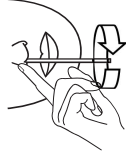
Step 2b.3

Using a circular motion, the nasal orifice should be swabbed for a minimum of five seconds.



Step 2b.4

Compress the nostril with the fingers to trap the swab tip and rotate the tip for a minimum of five seconds.



Step 2b.5

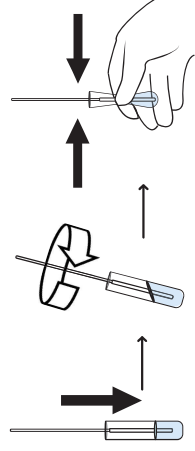
Remove and repeat for the other nostril with the same swab.



Step 3: Test Procedure

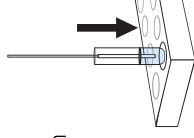
Step 3.1

Insert the swab with the collected specimen into the extraction tube. Swirl the swab, mixing well. Squeeze the swab 10-15 times by compressing the walls of the tube against the swab.



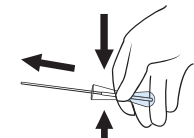
Step 3.2

With the swab still inside, securely place the extraction tube upright into the tube stand. Let the swab stand in the solution for **2 minutes**.



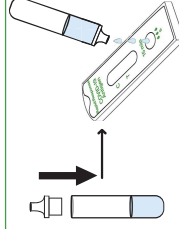
Step 3.3

Remove the swab while pressing the swab head firmly against the inner wall of the tube to release as much liquid as possible. Dispose of the used swab in accordance with the appropriate biohazard waste disposal protocol.



Step 3.4

Attach nozzle to sample extraction tube. Invert the tube and add 3 drops of the extracted solution into the sample well of the test device by gently squeezing the tube. Start the timer. Wait for coloured line(s) to appear. Read results at **15 minutes**.



Results Interpretation



This reference sheet is not a replacement for the Product Insert. Read the instructions prior to use and follow the directions carefully.