

## MANITOBA MARKETS

# Hog Prices



April 28, 2026

[Click here for definitions of how data is collected and calculated.](#)

### Exchange rates (Friday close)

1 US \$ = C \$1.3678

1 EURO = C \$1.6020

1 Yen = C \$0.00858

[Data source: Bank of Canada](#)

[Click to view the interactive hog dashboards for current and historical charts.](#)

### Manitoba Weighted Average Carcass Prices (including premiums and discounts)

#### All In Weights C\$/100 kg

| Week                     | Week ending date | 2026          | 2025          | Change from<br>Previous Week | Change from<br>Previous Year |
|--------------------------|------------------|---------------|---------------|------------------------------|------------------------------|
| 14                       | 2026-04-03       | 250.02        | 249.27        | 0.0%                         | 0.3%                         |
| 15                       | 2026-04-10       | 247.16        | 246.30        | -1.1%                        | 0.3%                         |
| 16                       | 2026-04-17       | 248.14        | 237.58        | 0.4%                         | 4.4%                         |
| 17                       | 2026-04-24       | 247.06        | 241.20        | -0.4%                        | 2.4%                         |
| <b>Four week average</b> |                  | <b>248.10</b> | <b>243.59</b> | <b>-</b>                     | <b>0.02</b>                  |

Source: Manitoba major processors.

## Index 100, C\$/100 kg

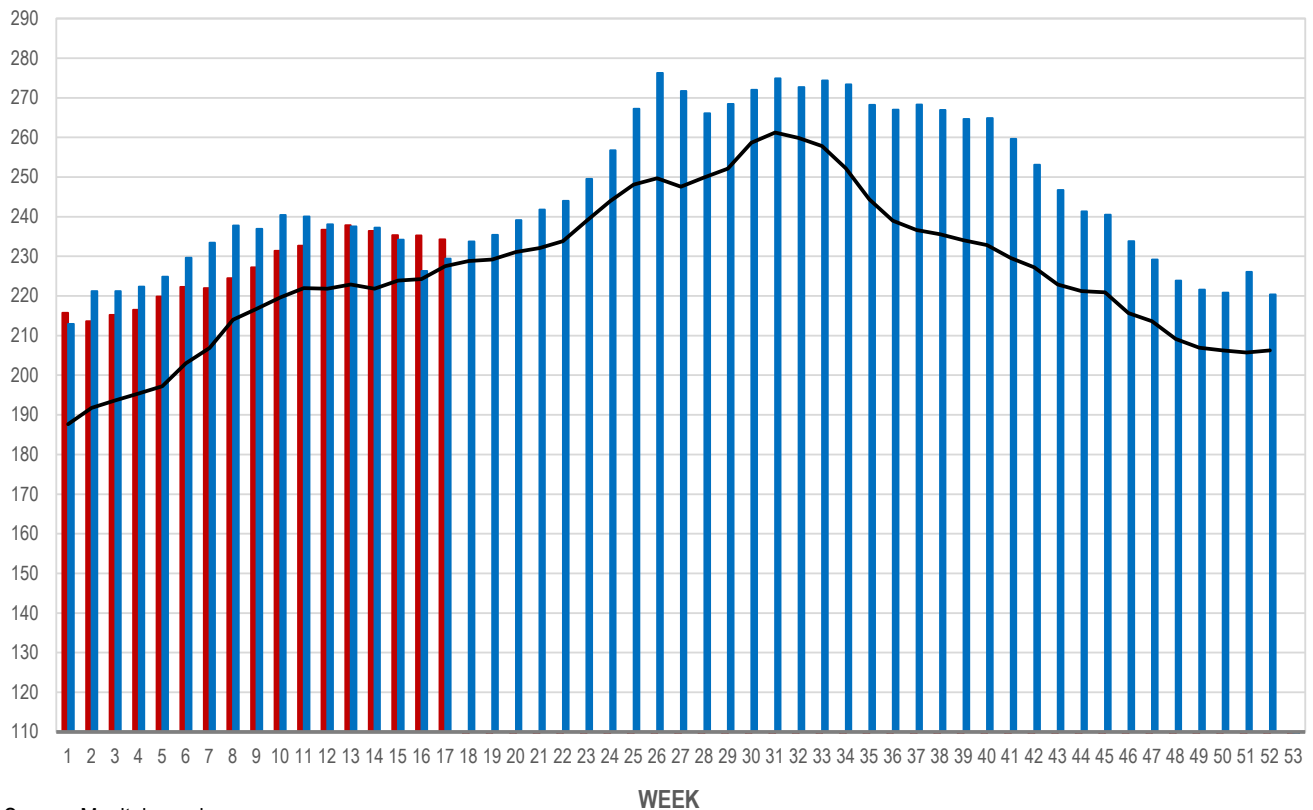
| Week                     | Week ending date | 2026          | 2025          | Change from Previous Week | Change from Previous Year |
|--------------------------|------------------|---------------|---------------|---------------------------|---------------------------|
| 14                       | 2026-04-03       | 236.42        | 237.27        | -0.6%                     | -0.4%                     |
| 15                       | 2026-04-10       | 235.34        | 234.17        | -0.5%                     | 0.5%                      |
| 16                       | 2026-04-17       | 235.30        | 226.30        | 0.0%                      | 4.0%                      |
| 17                       | 2026-04-24       | 234.24        | 229.39        | -0.5%                     | 2.1%                      |
| <b>Four week average</b> |                  | <b>235.33</b> | <b>231.79</b> | <b>-</b>                  | <b>0.02</b>               |

Source: Manitoba major processors.

## MANITOBA WEIGHTED AVERAGE INDEX 100 HOG PRICES WEEKLY

C\$/100 KG

2026 2025 5-YEAR AVE (2021-2025)



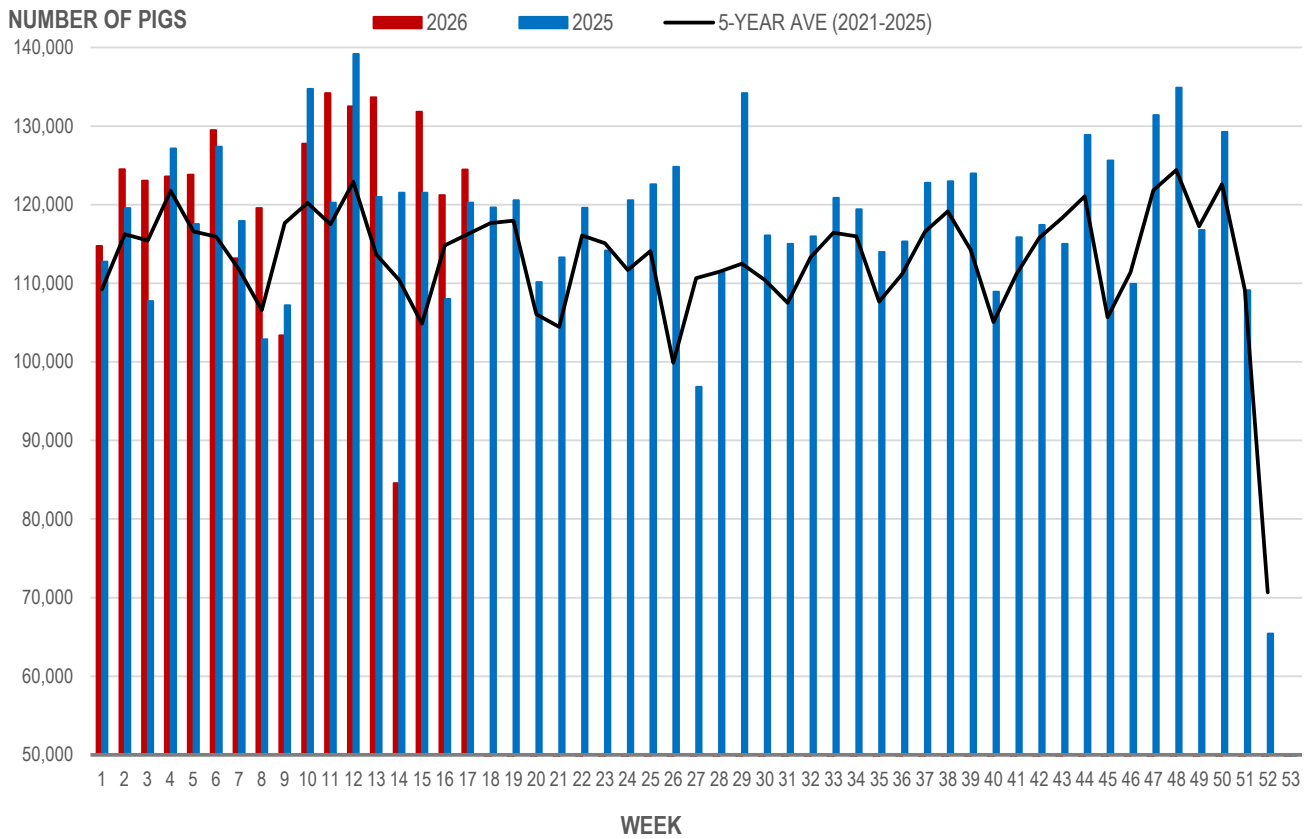
Source: Manitoba major processors

## Number of Pigs Processed by Major Processors

| Week                     | Week ending date | 2026           | 2025           | Change from Previous Week | Change from Previous Year |
|--------------------------|------------------|----------------|----------------|---------------------------|---------------------------|
| 14                       | 2026-04-03       | 84,592         | 121,527        | -36.7%                    | -30.4%                    |
| 15                       | 2026-04-10       | 131,808        | 121,534        | 55.8%                     | 8.5%                      |
| 16                       | 2026-04-17       | 121,229        | 108,020        | -8.0%                     | 12.2%                     |
| 17                       | 2026-04-24       | 124,478        | 120,272        | 2.7%                      | 3.5%                      |
| <b>Four week average</b> |                  | <b>115,527</b> | <b>117,838</b> | <b>-</b>                  | <b>-0.02</b>              |

Source: Manitoba major processors.

### NUMBER OF PIGS PROCESSED BY MAJOR PROCESSORS WEEKLY



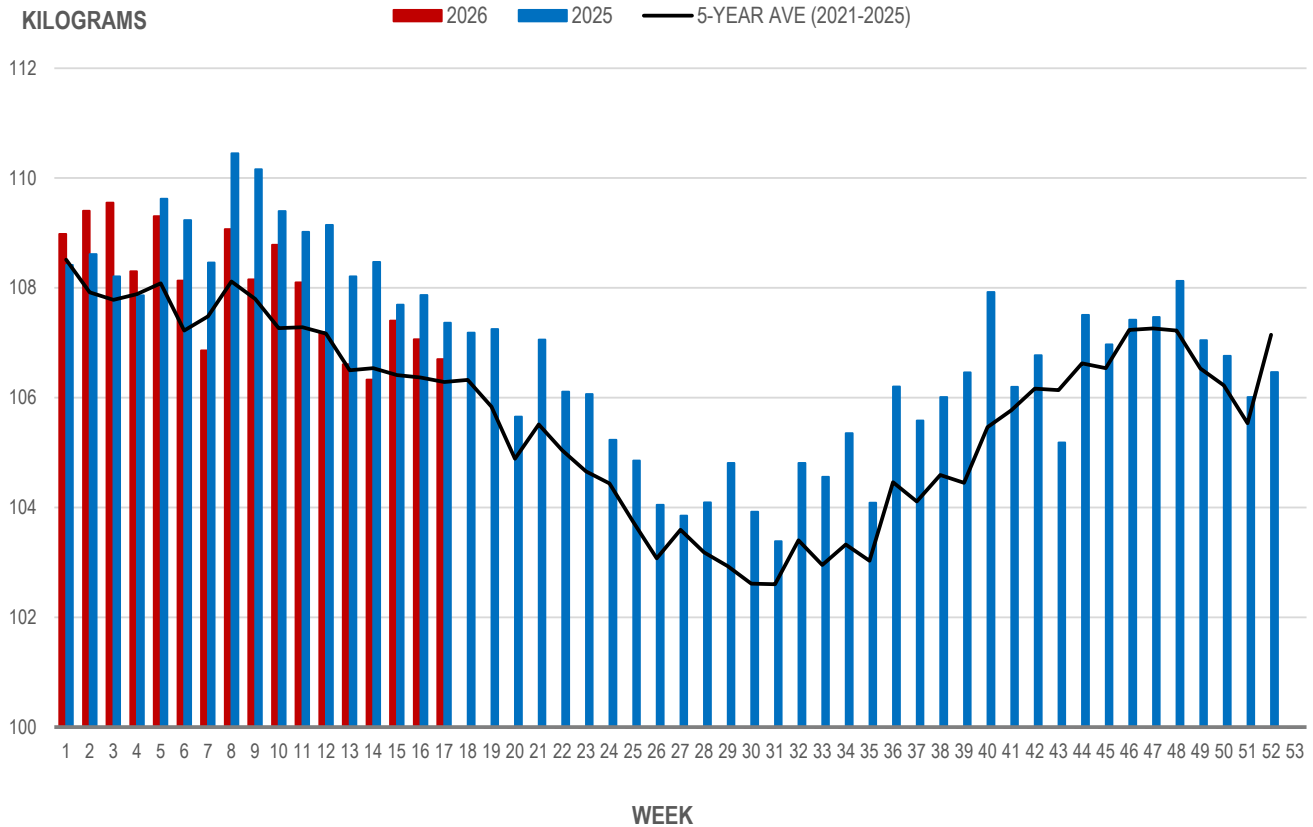
Source: Manitoba major processors

## Average Weight of Hogs Processed by Major Processors, Kg

| Week                     | Week ending date | 2026          | 2025          | Change from Previous Week | Change from Previous Year |
|--------------------------|------------------|---------------|---------------|---------------------------|---------------------------|
| 14                       | 2026-04-03       | 106.33        | 108.47        | -0.3%                     | -2.0%                     |
| 15                       | 2026-04-10       | 107.40        | 107.69        | 1.0%                      | -0.3%                     |
| 16                       | 2026-04-17       | 107.06        | 107.87        | -0.3%                     | -0.7%                     |
| 17                       | 2026-04-24       | 106.70        | 107.37        | -0.3%                     | -0.6%                     |
| <b>Four week average</b> |                  | <b>106.88</b> | <b>107.85</b> | <b>-</b>                  | <b>-0.01</b>              |

Source: Manitoba major processors.

### AVERAGE WEIGHT OF HOGS PROCESSED BY MAJOR PROCESSORS WEEKLY



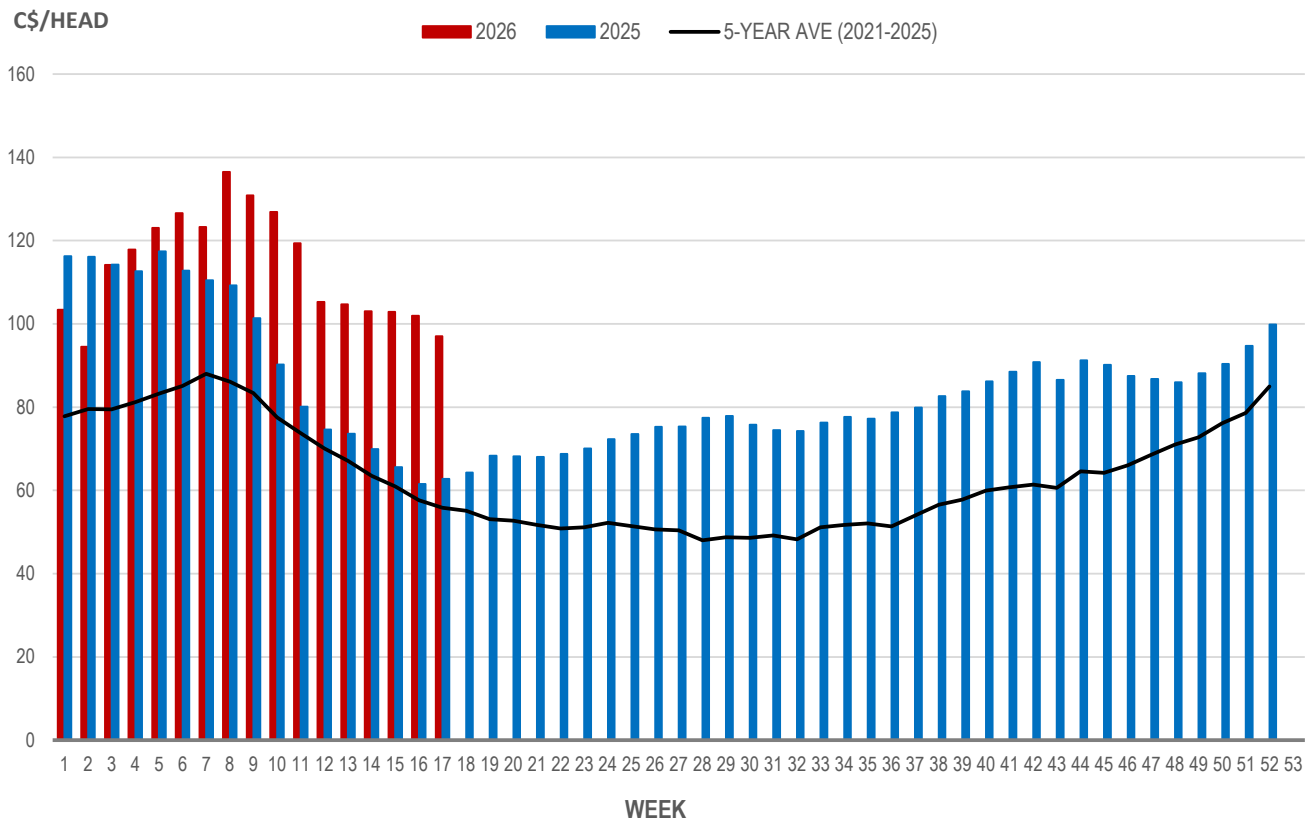
Source: Manitoba major processors

## Weaning Pigs (U.S. Total Composite Weighted Average Price per Head)

|                         | Formula and Cash<br>Low, US\$/Head | Formula and Cash<br>High, US\$/Head | Wtd Avg Price,<br>US\$/Head | Wtd Avg Price,<br>C\$/Head |
|-------------------------|------------------------------------|-------------------------------------|-----------------------------|----------------------------|
| Early Weaned (10-12 lb) | 47.44                              | 90.00                               | 70.92                       | 97.00                      |
| Feeder Pigs (40 lb)     | 101.00                             | 125.00                              | 117.02                      | 160.06                     |

Source: USDA, AMS

### EARLY WEANED PIGS (U.S. TOTAL COMPOSITE WEIGHTED AVERAGE PRICE PER HEAD) WEEKLY



Source: USDA, AMS

### Contact us

- [www.manitoba.ca/agriculture/markets-and-statistics/](http://www.manitoba.ca/agriculture/markets-and-statistics/)
- Email us at [industryintelligence@gov.mb.ca](mailto:industryintelligence@gov.mb.ca)
- Follow us on X @MBGovAg

