

## MANITOBA MARKETS

# Hog Prices



December 31, 2024

[Click here for definitions of how data is collected and calculated.](#)

### Exchange rates (Friday close)

1 US \$ = C \$1.4416

1 EURO = C \$1.5031

1 Yen = C \$0.00914

[Data source: Bank of Canada](#)

[Click to view the interactive hog dashboards for current and historical charts.](#)

### Manitoba Weighted Average Carcass Prices (including premiums and discounts)

#### All In Weights C\$/100 kg

| Week                     | Week ending date | 2024          | 2023          | Change from<br>Previous Week | Change from<br>Previous Year |
|--------------------------|------------------|---------------|---------------|------------------------------|------------------------------|
| 49                       | 2024-12-06       | 233.76        | 201.58        | -2.4%                        | 16.0%                        |
| 50                       | 2024-12-13       | 236.03        | 199.13        | 1.0%                         | 18.5%                        |
| 51                       | 2024-12-20       | 240.57        | 193.91        | 1.9%                         | 24.1%                        |
| 52                       | 2024-12-27       | 241.85        | 190.69        | 0.5%                         | 26.8%                        |
| <b>Four week average</b> |                  | <b>238.05</b> | <b>196.33</b> | <b>-</b>                     | <b>21.3%</b>                 |

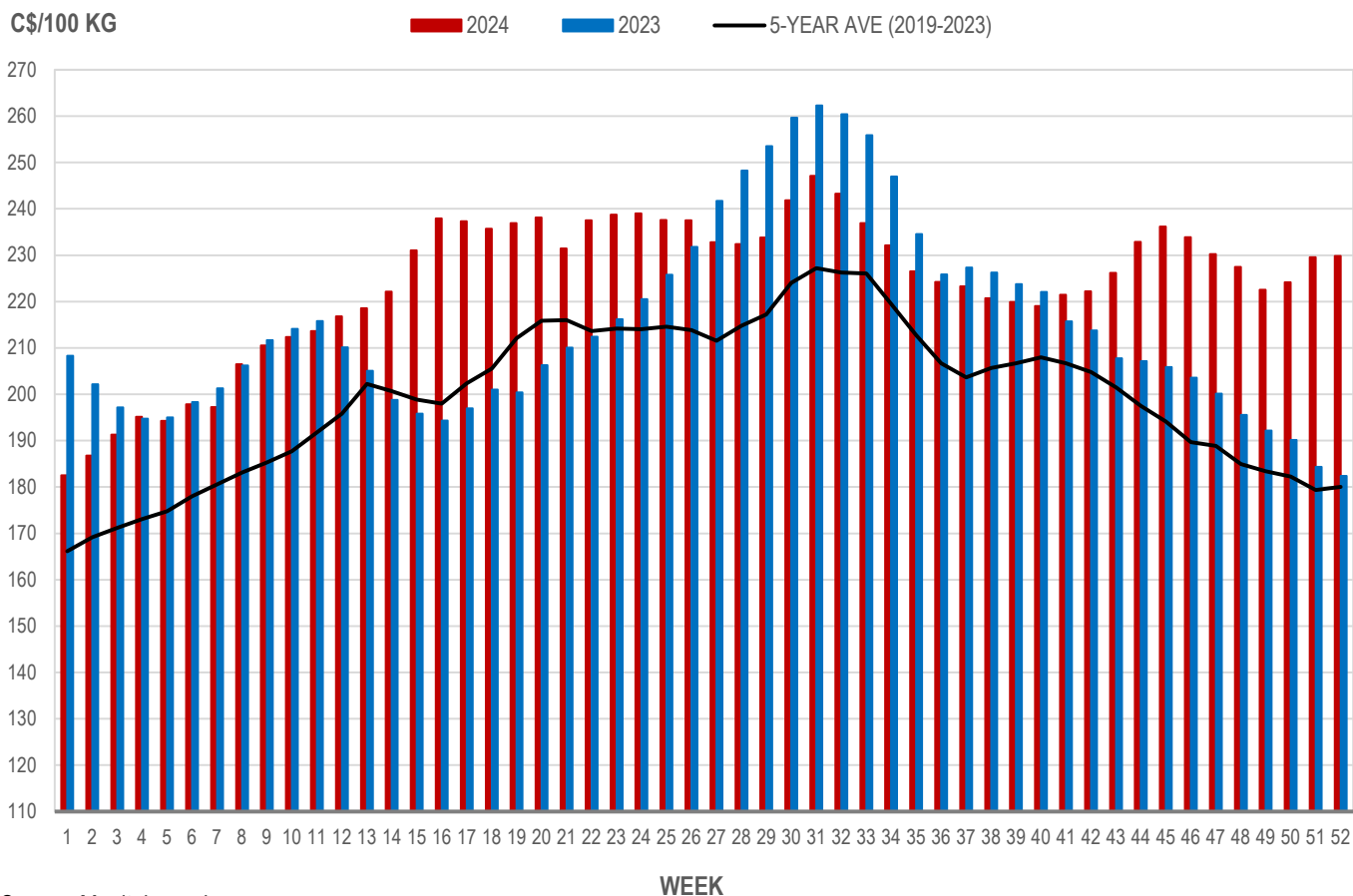
Source: Manitoba major processors.

## Index 100, C\$/100 kg

| Week                     | Week ending date | 2024          | 2023          | Change from Previous Week | Change from Previous Year |
|--------------------------|------------------|---------------|---------------|---------------------------|---------------------------|
| 49                       | 2024-12-06       | 222.56        | 192.17        | -2.2%                     | 15.8%                     |
| 50                       | 2024-12-13       | 224.14        | 190.17        | 0.7%                      | 17.9%                     |
| 51                       | 2024-12-20       | 229.55        | 184.37        | 2.4%                      | 24.5%                     |
| 52                       | 2024-12-27       | 229.87        | 182.37        | 0.1%                      | 26.0%                     |
| <b>Four week average</b> |                  | <b>226.53</b> | <b>187.27</b> | <b>-</b>                  | <b>21.0%</b>              |

Source: Manitoba major processors.

## MANITOBA WEIGHTED AVERAGE INDEX 100 HOG PRICES WEEKLY



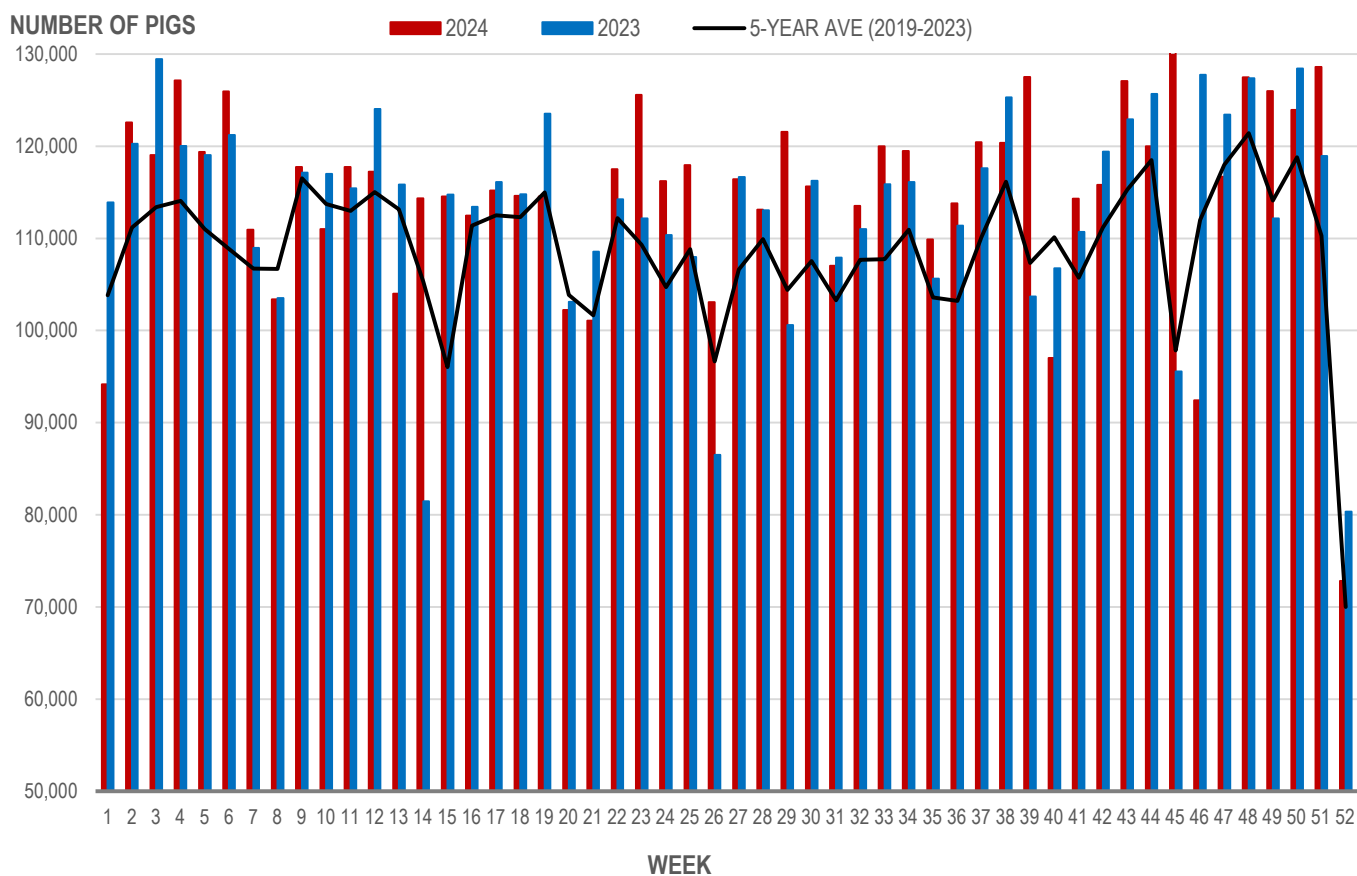
Source: Manitoba major processors

## Number of Pigs Processed by Major Processors

| Week                     | Week ending date | 2024           | 2023           | Change from Previous Week | Change from Previous Year |
|--------------------------|------------------|----------------|----------------|---------------------------|---------------------------|
| 49                       | 2024-12-06       | 125,987        | 112,173        | -1.2%                     | 12.3%                     |
| 50                       | 2024-12-13       | 123,937        | 128,428        | -1.6%                     | -3.5%                     |
| 51                       | 2024-12-20       | 128,604        | 118,950        | 3.8%                      | 8.1%                      |
| 52                       | 2024-12-27       | 72,809         | 80,331         | -43.4%                    | -9.4%                     |
| <b>Four week average</b> |                  | <b>112,834</b> | <b>109,971</b> | <b>-</b>                  | <b>2.6%</b>               |

Source: Manitoba major processors.

### NUMBER OF PIGS PROCESSED BY MAJOR PROCESSORS WEEKLY



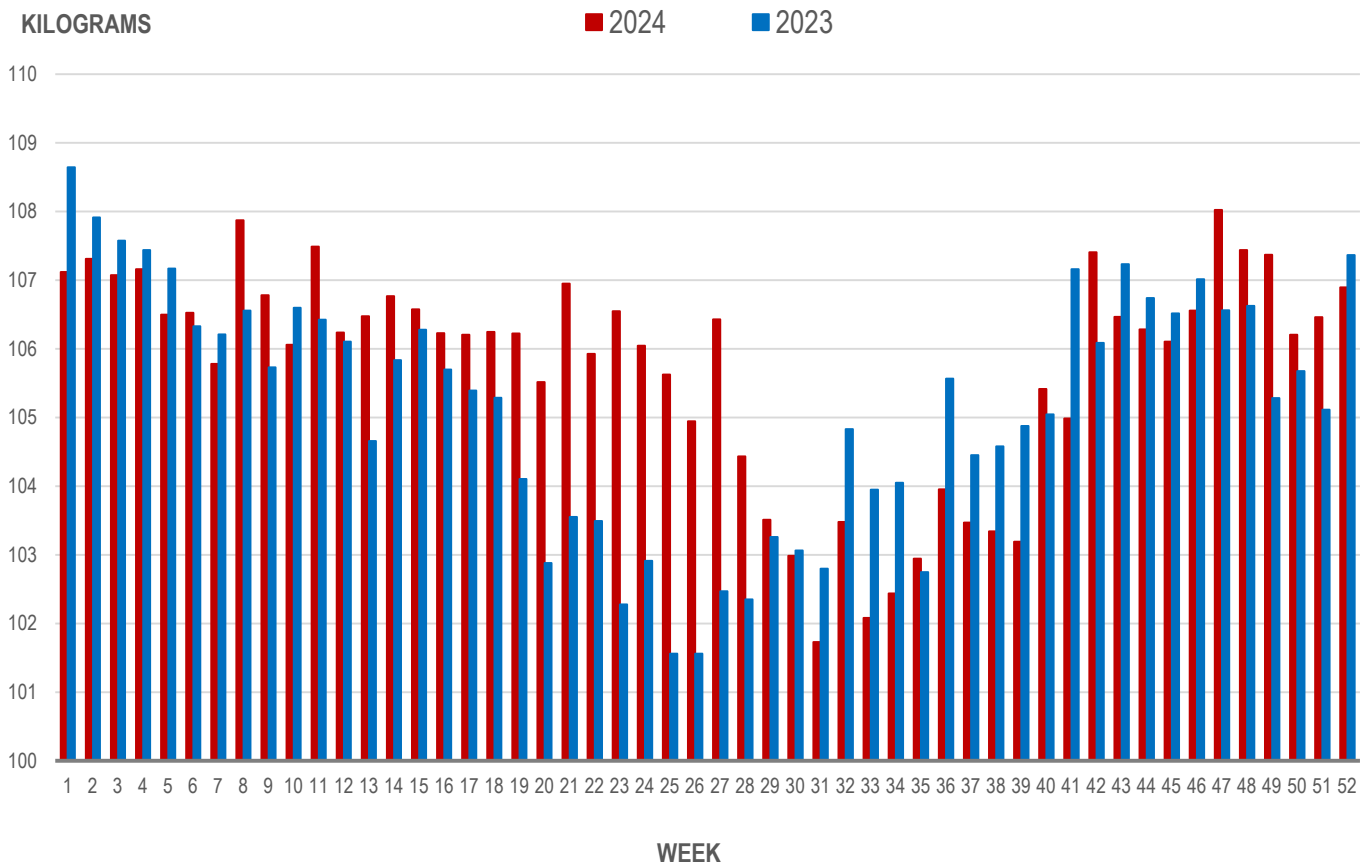
Source: Manitoba major processors

## Average Weight of Hogs Processed by Major Processors, Kg

| Week                     | Week ending date | 2024          | 2023          | Change from Previous Week | Change from Previous Year |
|--------------------------|------------------|---------------|---------------|---------------------------|---------------------------|
| 49                       | 2024-12-06       | 107.37        | 105.28        | -0.1%                     | 2.0%                      |
| 50                       | 2024-12-13       | 106.21        | 105.68        | -1.1%                     | 0.5%                      |
| 51                       | 2024-12-20       | 106.46        | 105.12        | 0.2%                      | 1.3%                      |
| 52                       | 2024-12-27       | 106.90        | 107.36        | 0.4%                      | -0.4%                     |
| <b>Four week average</b> |                  | <b>106.73</b> | <b>105.86</b> | <b>-</b>                  | <b>0.8%</b>               |

Source: Manitoba major processors.

### AVERAGE WEIGHT OF HOGS PROCESSED BY MAJOR PROCESSORS WEEKLY



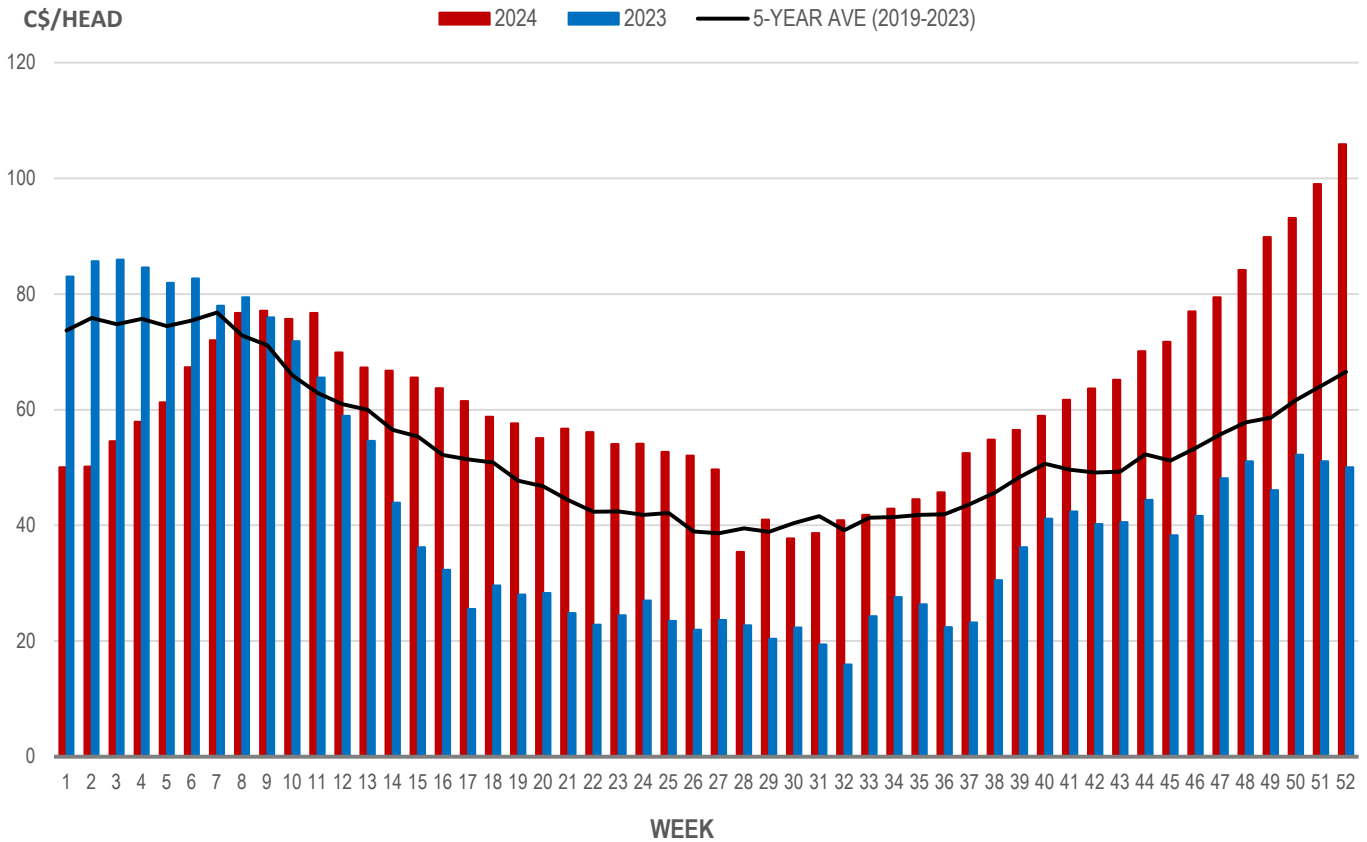
Source: Manitoba major processors

## Weaning Pigs (U.S. Total Composite Weighted Average Price per Head)

|                         | Formula and Cash<br>Low, US\$/Head | Formula and Cash<br>High, US\$/Head | Wtd Avg Price,<br>US\$/Head | Wtd Avg Price,<br>C\$/Head |
|-------------------------|------------------------------------|-------------------------------------|-----------------------------|----------------------------|
| Early Weaned (10-12 lb) | 51.50                              | 90.00                               | 73.46                       | 105.90                     |
| Feeder Pigs (40 lb)     | 83.00                              | 95.00                               | 88.19                       | 127.13                     |

Source: USDA, AMS

### EARLY WEANED PIGS (U.S. TOTAL COMPOSITE WEIGHTED AVERAGE PRICE PER HEAD) WEEKLY



Source: USDA, AMS

### Contact us

- [www.manitoba.ca/agriculture/markets-and-statistics/](http://www.manitoba.ca/agriculture/markets-and-statistics/)
- Email us at [industryintelligence@gov.mb.ca](mailto:industryintelligence@gov.mb.ca)
- Follow us on X @MBGovAg

