

Issue 6 – June 11, 2026

Manitoba Potato Report



[Seasonal Reports](#) [Weekly Weather Maps](#) [Potato Production](#)

Provincial Summary

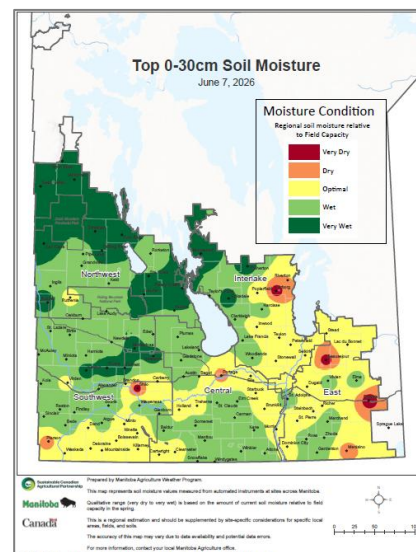
- Potato plant emergence was over 50% fields with 50% or higher in the province by June 6-7. A few late planted fields are yet to emerge. Some fields in south-west were flooded due to heavy rains on June 2-3.
- Hilling has continued in most fields; pre-emergence weed burn-off is progressing well in many fields.
- Aphid monitoring traps have been set up in selected seed potato fields. Colorado potato beetles have been reported in some areas.
- All reports and information will also be available at [Province of Manitoba | agriculture - Potato Report](#) and <http://www.mbpotatoes.ca/index.cfm>.

Ag Weather Data

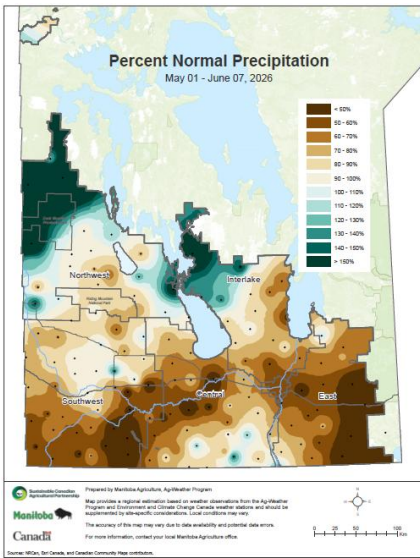
Precipitation and Soil Moisture

- Scattered heavy showers with thunderstorms were reported across the province on June 2 and 4. Extensive thunderstorms and hail on June 7-8 missed most potato areas. Thunderstorms and hail were reported again on June 9 in some potato areas.
- After heavy rains on June 2-4, the soils in the 0-30 cm depths in potato growing areas were generally considered “wet” based on Regional Soil Moisture Relative to Field Capacity, by June 7 (Fig 1) and were still “wet” at 120 cm depths. <https://www.gov.mb.ca/agriculture/weather/pubs/soil-moisture-30cm.pdf>
<https://www.gov.mb.ca/agriculture/weather/pubs/soil-moisture-120cm.pdf>
- Precipitation (mm) in the week (June 1-7) was substantial, ranging from 11.9 (Portage) to 97.2 mm (Winkler) (Table 1). Other potato areas got 14 to 50 mm. This heavy rain brought the cumulative precipitation from significantly below normal (16-37%) to much higher levels, ranging from 37% (Treherne) to 136% (Winkler). Other areas ranged from 39 to 92% of normal (Table 1, Fig 2a).
<http://www.gov.mb.ca/agriculture/weather/pubs/percent-normal-precipitation.pdf>

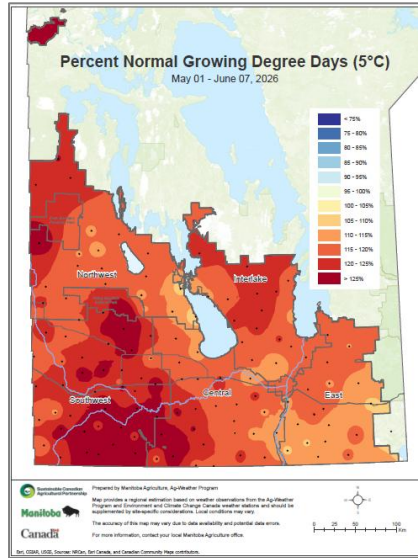
Fig 1. By June 7, soil moisture relative to field capacity at the 0-30 cm depth indicated mostly “wet” conditions in potato-growing areas. At the 120 cm depth, soils were wetter (map not shown).



Report compiled by Dr. Vikram Bisht
Potato and Horticulture Crop Pathologist, Manitoba Agriculture
[Subscribe](#) to the weekly Potato Report



2a



2b

Fig 2a (left): Extensive rainfall from June 1-7 has improved the cumulative precipitation from below 40% of normal last week to 40 to 136% of normal in the potato growing areas of the province.

Fig 2b (right): Warmer air temperatures during the week of June 1-7 increased cumulative growing degree days (GDD) to around 120% of normal across most potato-growing areas.

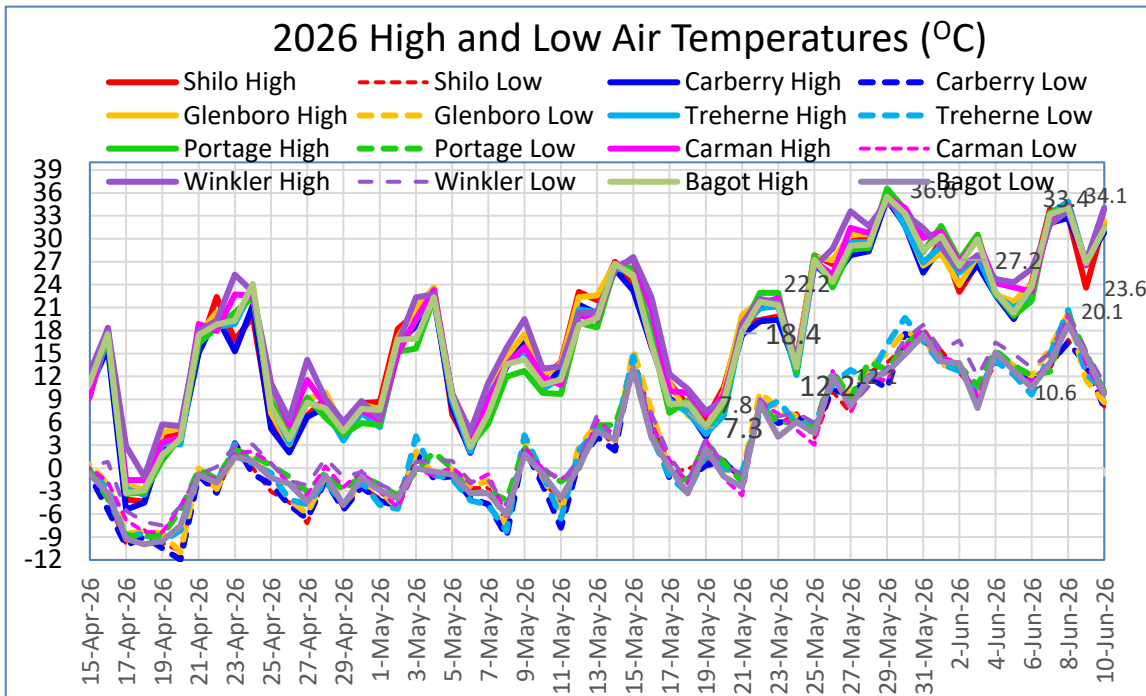


Fig 3. Daytime air temperatures in the potato-growing areas have continued above 30°C, ranging from 32.1 to 33.4°C on the 7th of June. Nighttime temperatures have also been warm, ranging from 10.6 to 20.1°C.

Temperatures – Air and Soil

- From June 1-7 the daytime temperatures were hot and reached 32.0 to 35.0°C in the potato growing areas (Table 1, Fig 3). Overnight lows were similar to last week, ranging from around 7.6°C at Wawanesa to 12.0°C in Winkler.
- Hot days in the week, increased the Cumulative heat (Growing Degree Days, GDD base 5°C) from close to 106-120% to 117-128% of normal (Table 1, Fig 2b).

- Due to high daytime temperatures, the 5 cm depth soil temperatures also increased, ranging from 9.1°C (Bagot) to 22.2°C (Carman) on June 9. Bagot had the coolest soils, while Carberry, Treherne and Carman were the warmest (Fig 4). The 20 cm depths had similar trend but were cooler. The soils have rapidly warmed up in the week and expected to lead to some seed rot.

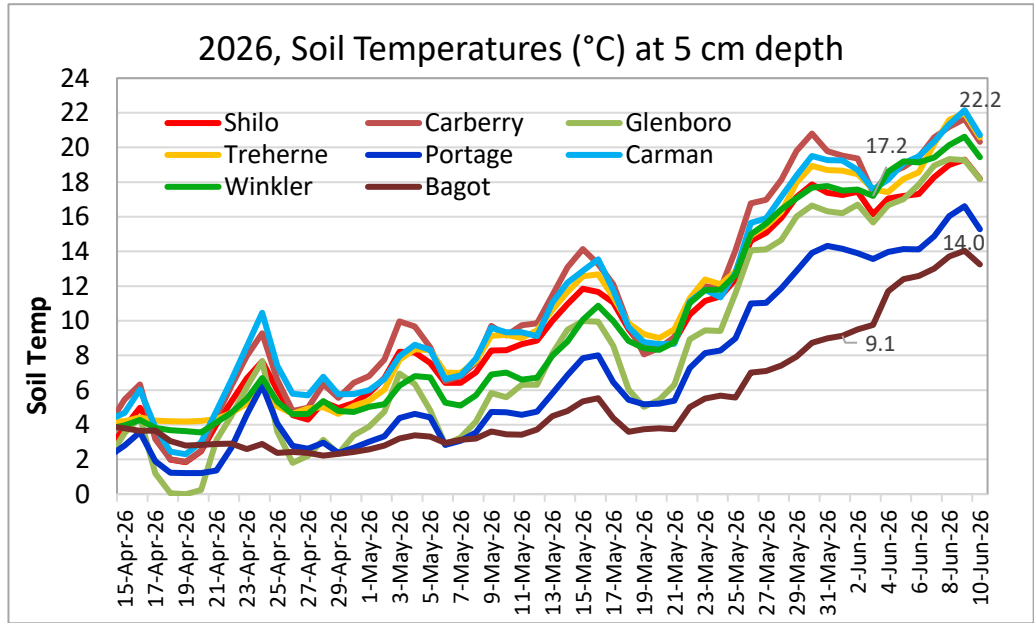


Fig 4. Soil temperatures in the 5 cm depths have been warming up since May 20, but with a dip around June 3 and peaking again on June 9.

Table 1. Manitoba Ag Weather Data – June 1 - 7

Region	Max Temp (°C)	Min Temp (°C)	Rainfall (mm) for the week	Rainfall (mm) (Since May 1)	2026 Rainfall (% of normal) since May 1	GDD (% of normal)
Altona	NA	NA	NA	NA	NA	
Austin	34.0	8.8	20.9	46	60	120
Bagot	34.1	7.9	45.2	62	79	116
Carberry EC	33.7	9.4	15.6	30	39	128
Carman	34.3	9.3	41.9	59	64	119
Glenboro	33.7	9.9	39.2	49	64	128
Holland	33.6	10.5	26.9	47	55	126
Morden	34.2	11.9	43.3	66	76	117
Portage EC	34.1	11.1	11.9	31	39	121
Rivers	29.4	10.1	49.8	71	92	126
Shilo	33.8	9.5	14.3	30	39	121
St. Claude	33.3	10.7	28.5	43	47	117
Treherne	34.8	9.6	16.0	31	37	120
Wawanesa	33.5	7.6	23.3	38	47	126
Winkler	33.6	12.0	97.2	127	136	122

For more Manitoba weather information, visit: www.gov.mb.ca/agriculture/weather

More information on:

Crop Water Demand (CWD) mm: www.mbpotatoes.ca/cwd.cfm

P-Days: www.mbpotatoes.ca/pday.cfm



Crop Progress

- Potato planting was finally completed on June 6 ahead of the heavy rainfall that occurred on June 7-8.
- Hilling and weed control operations, including pre-emerge weed burn off application, continued in many early-planted fields.
- As expected, by June 6-7, 50% of fields had reached 50% or greater emergence. Normally, this happens by June 1. This year, the cooler-than-normal temperatures in May delayed crop emergence by approximately 5-6 days. Some early planted fields reached nearly 100% emergence (Fig 6 a and f).
- The plants have reached 5–6-inch height in some early planted fields (Fig 6 d - f).
- Significant precipitation was recorded all over the province on June 2-3, followed by more rains on June 7-8. Flooding on some potato fields was reported (Fig 5 a, b).
- Scattered hailstorms occurred on June 9, causing localized damage in some areas (Fig 5 c). However, because the potato crop was still at an early growth stage, most plants are expected to recover with minimal long-term impact.

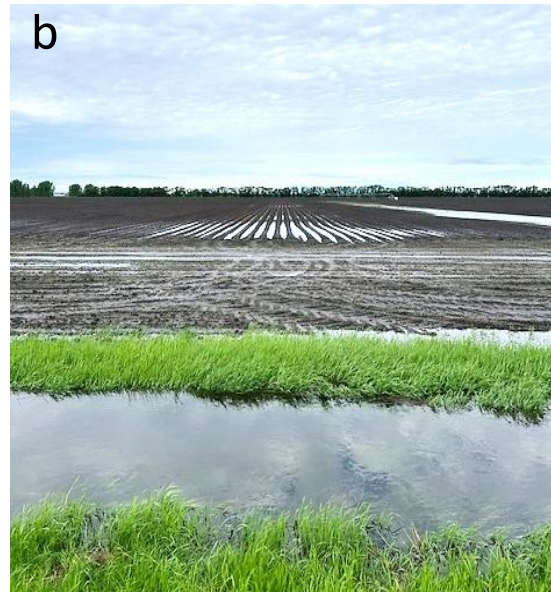


Fig. 5 a-c. Flooding was reported in some fields after heavy rain across Manitoba, a: Kurtis McKee (JP Wiebe Farms), b: Tavis Mangin (Simplot Canada). c: Golf ball-size hailstones were reported from some areas. Angie J. (Sanford).



Fig. 6 a-f. Potato emergence was around 50 to 100 % in many fields; a: Orla Sheridan (Shilo Farms), b-e: Treherne and Rathwell showing emergence from ground cracking up to 100%, c: ground cracking by sprouts, Vikram Bisht (Manitoba Agriculture), f: Arizona field with good emergence and stand, Kurtis McKee (JP Wiebe Farms).

There is a forecast for a chance of scattered showers on June 11 to 13 and 15 and cooler days (high teens and low 20s) compared to over 30°C last week. Overnight temperature lows are expected to be below 10°C. [Manitoba - Weather Conditions and Forecast by Locations - Environment Canada](http://www150.ca/manitoba/weather/conditions-and-forecast-by-locations)

- Late blight risk maps, P-Days, and SprayCast maps are available <http://www.mbpotatoes.ca/index.cfm>.

Disease Monitoring

- Late blight risk forecasting will be provided on a regional basis at www.mbpotatoes.ca. Late blight disease risk is projected to start accumulating around June 1.
 - Late blight spore monitoring will be done using passive spore traps beginning in mid-June. Spore traps have been set up in many fields, and the first collection will be on June 15.

- Diseases like blackleg, early blight, verticillium wilt and powdery scab will be monitored during the season.
- Some seed rot has been reported in a few fields, resulting from slower emergence in cool soil, high soil moisture due to two rain events and then very warm soil (Fig 7 a).



Fig. 7. a: Seed rot affected by *Fusarium* sp. and soft rot bacteria. Kurtis McKee (JP Wiebe Farms), b, c: Dead Colorado potato beetles at the base on seed-treated plants in Winkler and Carman. b: Harrison Loewen (KR Crop Check); c: Vikram Bisht (Manitoba Agriculture)

Insect Pest Monitoring

- Aphid monitoring using suction traps have been set up in seven seed potato fields; pan traps will be set up after hilling is completed in these fields. Monitoring started on June 8.
- European Corn Borer monitoring will be started in 4th week of June.
- Dead Colorado potato beetles (CPB) were seen at the base of neonicotinoid seed treated plants (Fig 7 b, c) indicating that the neonic insecticides are still effective early in the season. This also implies that CPB adults have started feeding on plants.

Growers and industry stakeholders, please report or submit for diagnosis, any disease or insect observations of importance. If you suspect late blight in your area, please contact vikram.bisht@gov.mb.ca

All reports and information will also be available at <http://www.mbpotatoes.ca/index.cfm> and archived at [Manitoba Potato Reports](#)