



2010 Community Mapping Program



2 year program under the
Far North Geomapping Initiative

Linda Murphy
Precambrian Geologist
Ph 204-945-6288
Anders Carlson
Mineral Geologist

Funded by

Manitoba Geological Survey, Innovation, Energy and Mines
and
Labour Market Skills Division, Manitoba Competitiveness, Training and Trade

Partnered with

The Sayisi Dene First Nation at Tadoule Lake, Manitoba



Canada

Manitoba



What is a community mapping program?

Members of a remote or First Nation community are encouraged to accompany MGS staff geologists in their traditional land and learn how we map bedrock

Goals

2009

- Increase awareness of the geology of their area
- Provide basic mineral exploration experience
- Foster information sharing between First Nations and Manitoba Geological Survey

2010

- Provide a geological contact person for First Nation communities





Communication

Information meetings at Tadoule Lake prior and during the program





Friendship

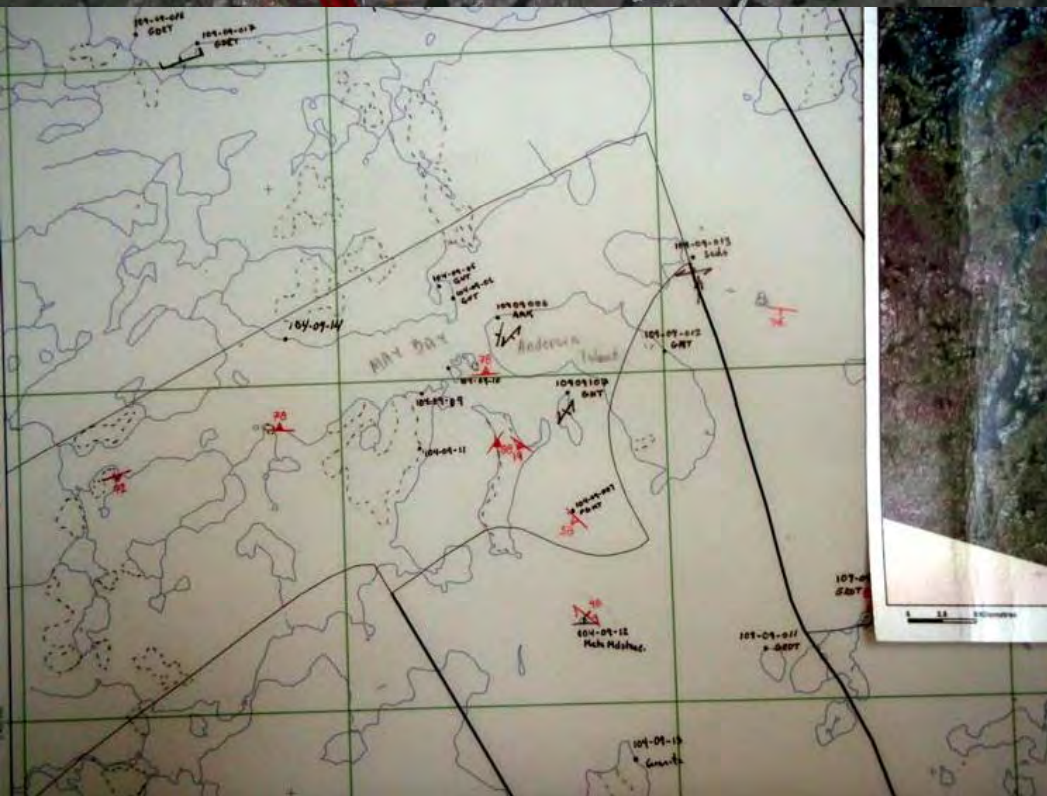
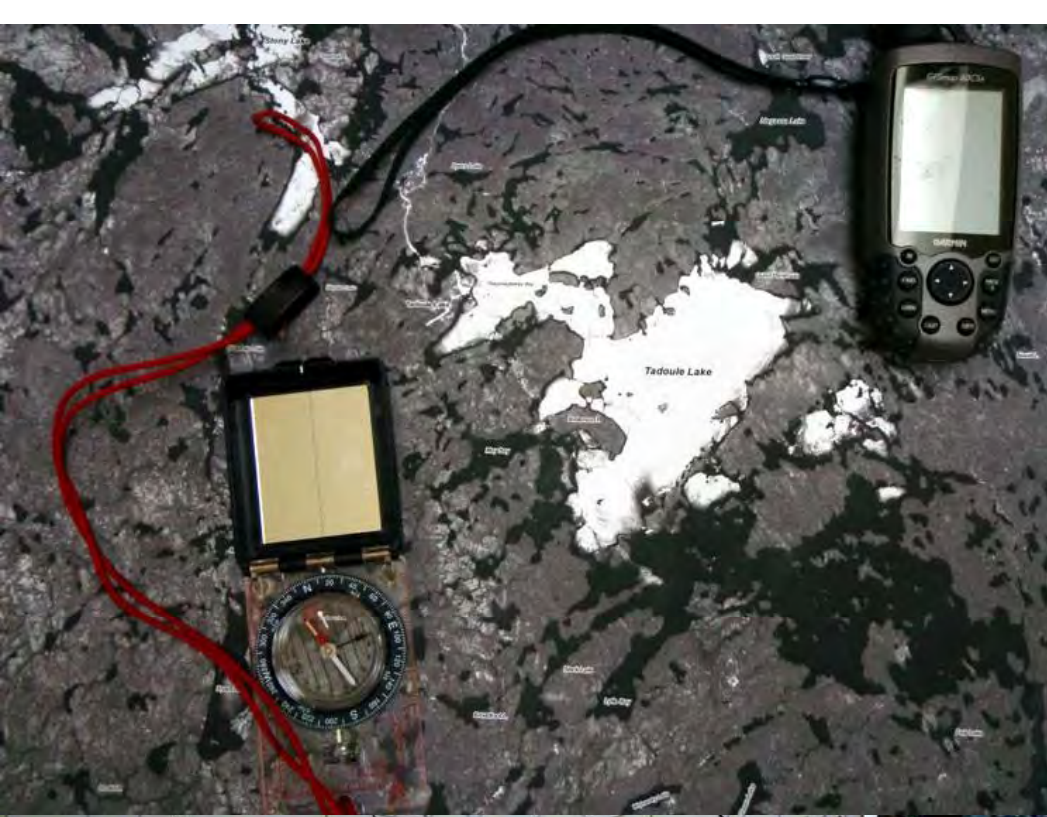




Classroom and fieldwork

Measure
structural data
foliation and
bedding
Rock and mineral
identification
Outcrop washing

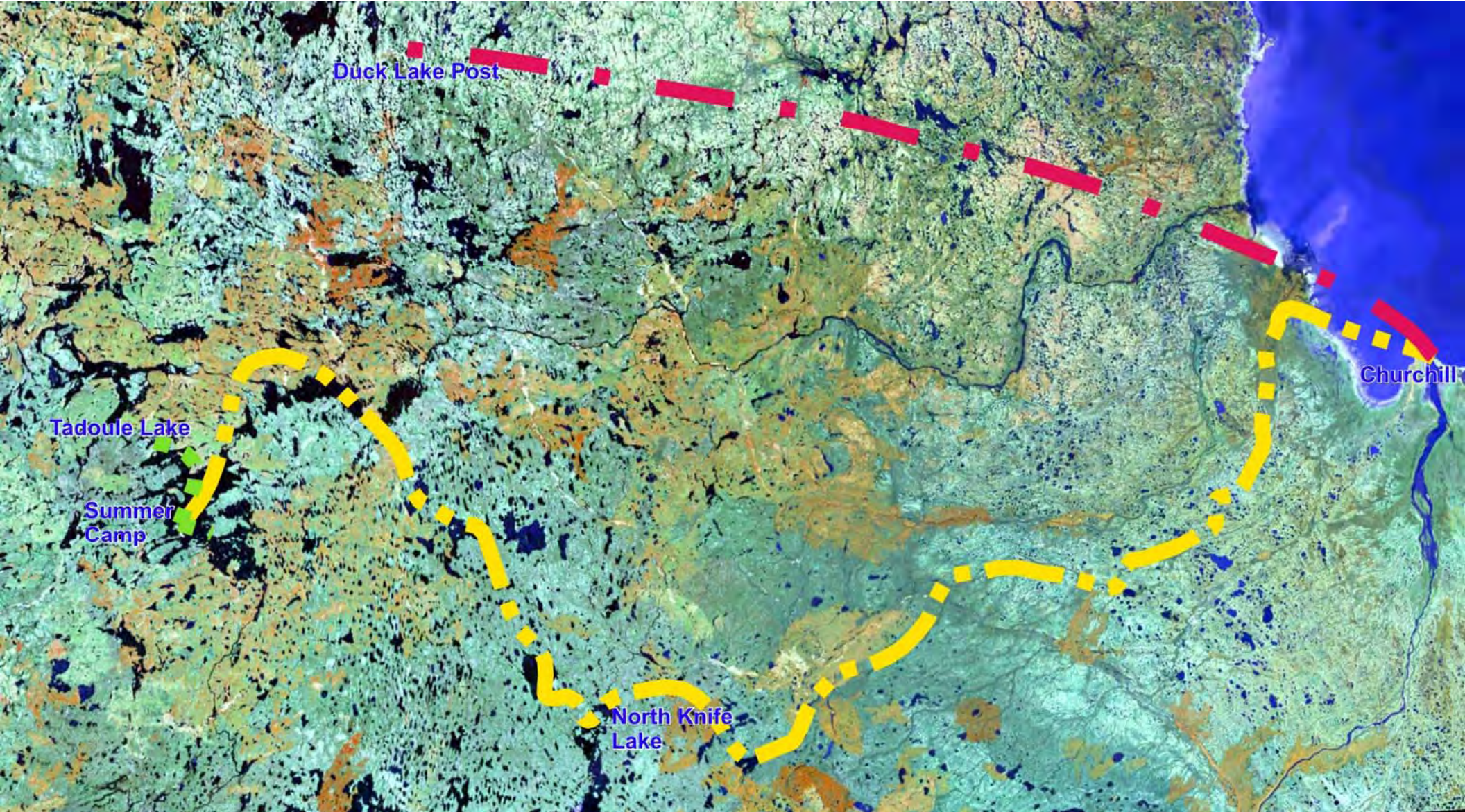




**Navigation
data collection
mapping
in a remote camp**



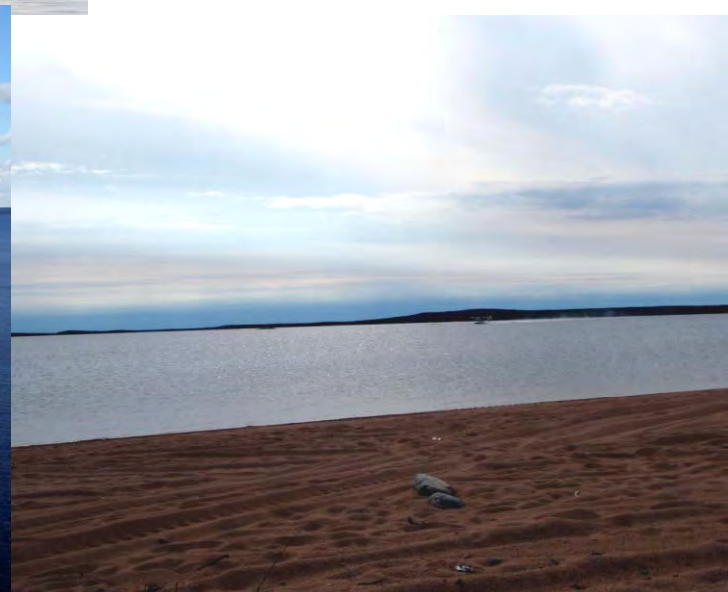
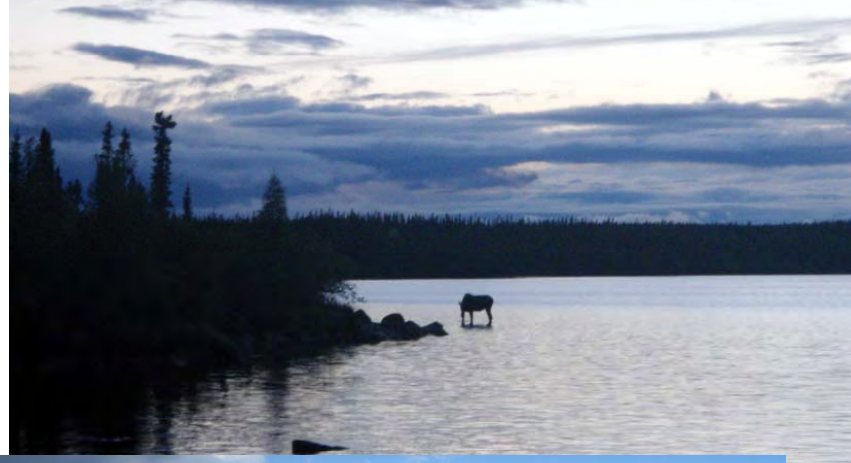
The Sayisi Dene were dislocated from their traditional lands and lifestyle in 1956



Infrastructure



eco-tourism



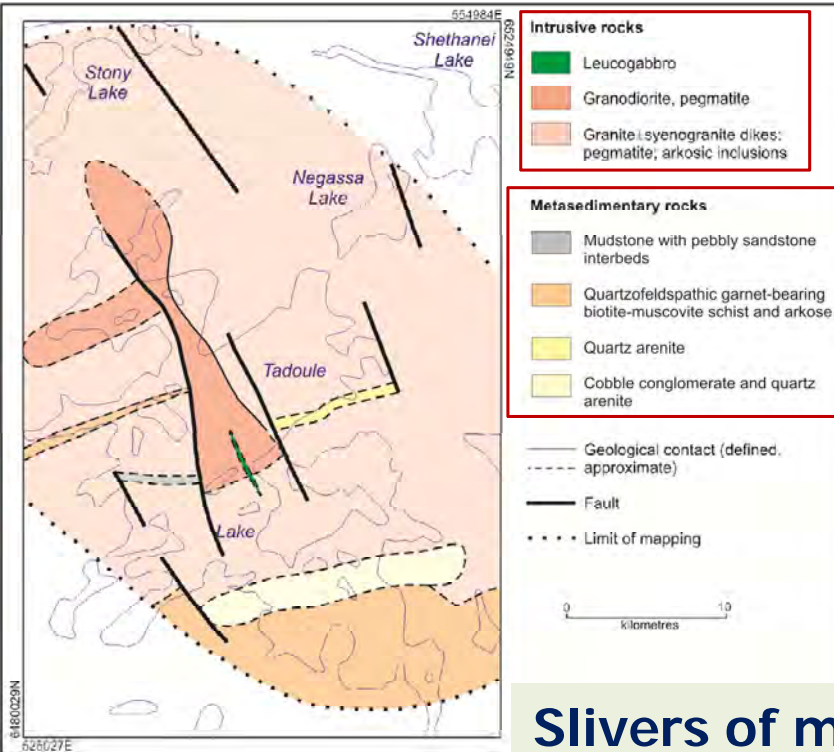
Artistic talent



Bedrock geology



2009
mostly
amphibolite-facies
granitoid rock

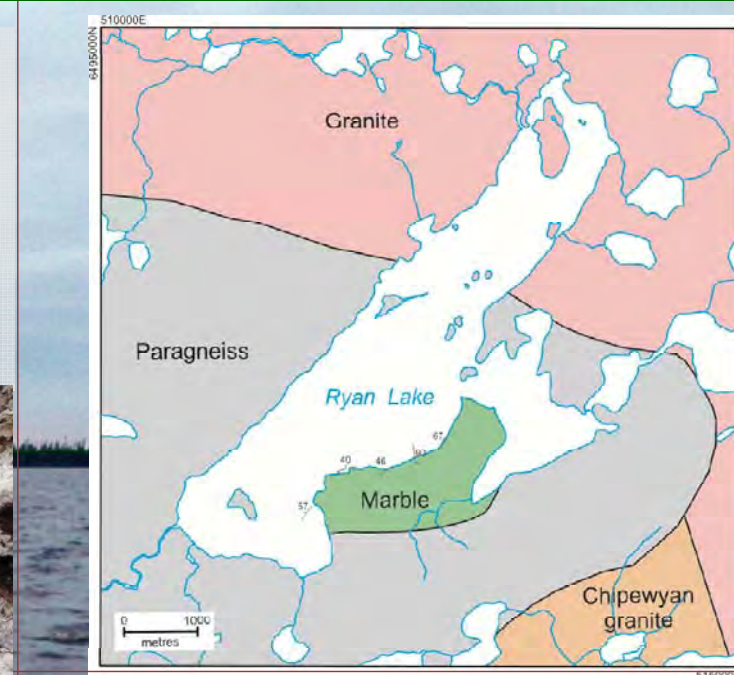


Slivers of metamorphosed sedimentary rock

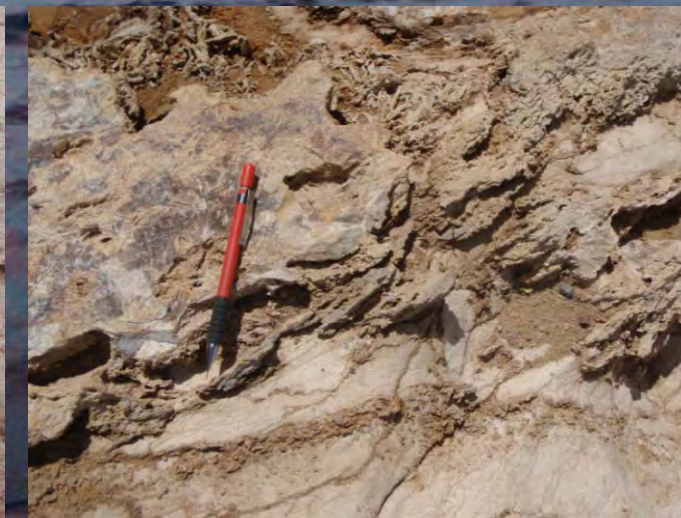
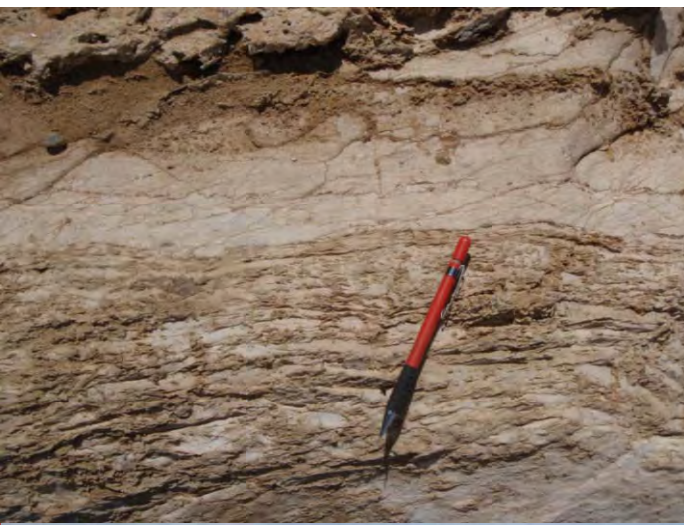


2010 Ryan Lake marble occurrence

Impure dolomitic marble
made up of several
bedding components:
layered and podiform with
intervening pebbly
carbonate sandstone

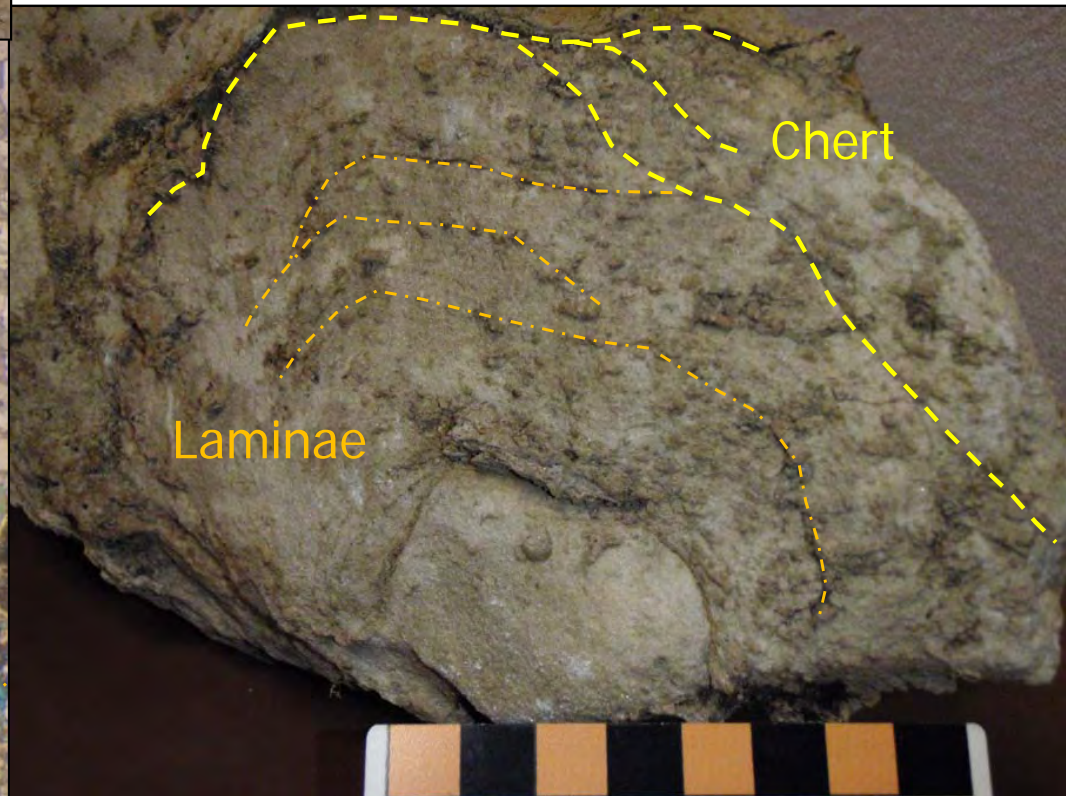
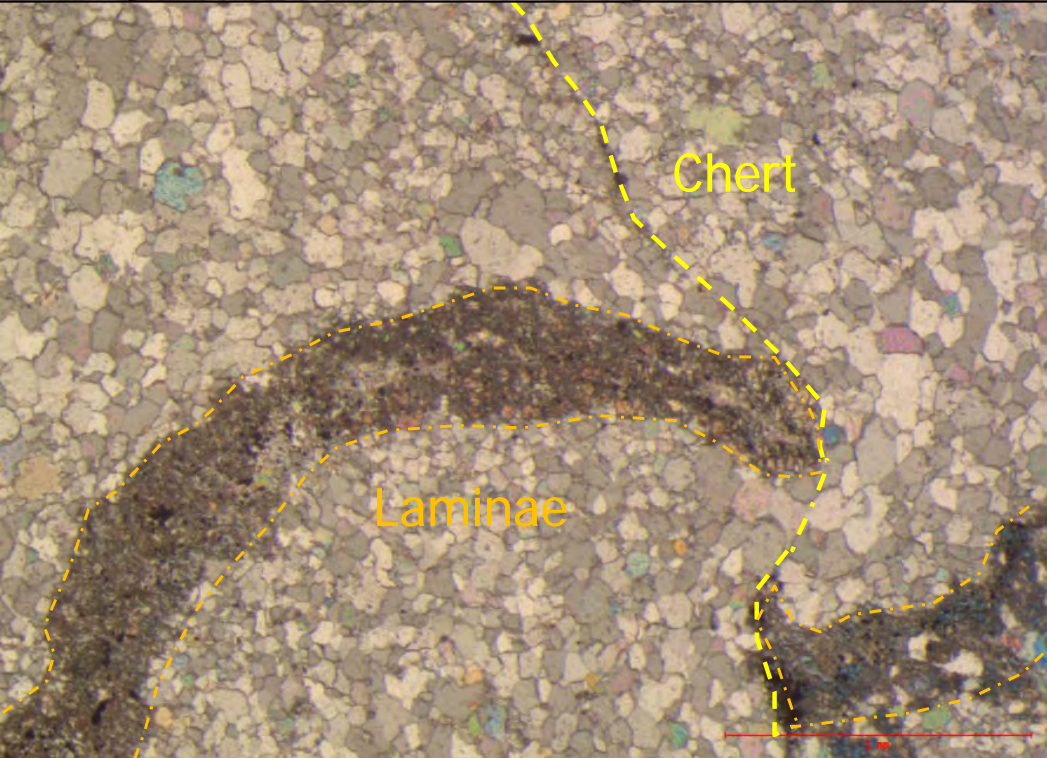


Beds contain: chert clasts,
nodules and stringers as well
as carbonate-quartz matrix
and thin red laminae



Stromatolitic marble

A Paleoproterozoic metamorphosed stromatolite bioherm that formed in a shallow marine-platform environment. Stromatolites are organosedimentary structures that form during the growth of photosynthesizing cyanobacteria, which induce carbonate. These algal mats capture nutrients and collect sediment from the water column.



What do we accomplish with this program?

We **teach** our geological perspective

We **learn** the Sayisi Dene land-use perspective

- **Cultural-traditional aerial land view**

We **exchange** ideas for economic development

Eco-tourism

Environment

Mineral exploration

Artistic talent

By working together to understand perspectives,
we encourage a balanced approach that
enhances

- **Manitoba's geological knowledge base**
- **Sayisi Dene land use planning**
- **Economic development**

In the language of the Sayisi Dene of Tadoule Lake
Masi Cho

Chief and Council of the Sayisi Dene First Nation
Sayisi Dene Nene Land Claims Secretariat
Sayisi Dene Education Authority
Elders Council
Youth Council

Dene-Tzi Marble

Participants
2009 and
2010

M. Powderhorn

J. Thorassie J.J. Jawbone

G. Yassie



L. Bussidor

S. Cutlip

D. Summerville





Dene-Tzi Marble

